

BALDOR • RELIANCE

Customer information packet

AEM3783-4

3HP, 1760RPM, 3PH, 60HZ, 213, 0728M, TEFC, F1, N

Class - None

Division - Not Applicable

Specifications

Enclosure	TEFC
Frame	213
Frame Material	Iron
Frequency	60.00 Hz
Haz Area Class and Group	None
Haz Area Division	Not Applicable
Motor Letter Type	Three Phase
Output @ Frequency	3.000 HP @ 60 HZ
Phase	3
Synchronous Speed @ Frequency	1800 RPM @ 60 HZ
Voltage @ Frequency	460.0 V @ 60 HZ
Agency Approvals	UR CSA
Ambient Temperature	65 °C
Auxillary Box	No Auxillary Box
Auxillary Box Lead Termination	None
Base Indicator	Rigid
Bearing Grease Type	Polyrex EM (-20F +300F)
Blower	None
Current @ Voltage	3.900 A @ 460.0 V
Design Code	B
Drip Cover	No Drip Cover
Duty Rating	CONT
Efficiency @ 100% Load	89.5 %
Electrically Isolated Bearing	Not Electrically Isolated
Feedback Device	NO FEEDBACK
Front Shaft Indicator	None
Heater Indicator	No Heater
High Voltage Full Load Amps	3.9 a
Insulation Class	F
Inverter Code	Inverter Ready
KVA Code	K

Part detail

Revision	B
Type	AC
Mech. spec.	07G087
Base	
Status	PRD/A
Elec. spec.	07WGR447
Layout	07LYG087
Eff. date	04-21-2021
CD Diagram	CD0006
Poles	04
Leads	3#14
Proprietary	False
Created date	11-19-2020

Lifting Lugs	Standard Lifting Lugs
Locked Bearing Indicator	No Locked Bearing
Motor Lead Quantity/Wire Size	3 @ 14 AWG
Motor Lead Termination	Flying Leads
Motor Standards	NEMA
Motor Type	0728M
Mounting Arrangement	F1
Number of Poles	4
Overall Length	18.07 IN
Power Factor	81
Product Family	Automotive (Not For DC)
Pulley End Bearing Type	Ball
Pulley Face Code	Standard
Pulley Shaft Indicator	Standard
Rodent Screen	None
RoHS Status	ROHS COMPLIANT
Service Factor	1.00
Shaft Diameter	1.125 IN
Shaft Ground Indicator	No Shaft Grounding
Shaft Rotation	Reversible
Shaft Slinger Indicator	No Slinger
Speed	1760 rpm
Speed Code	Single Speed
Starting Method	Direct on line
Thermal Device - Bearing	None
Thermal Device - Winding	None
Vibration Sensor Indicator	No Vibration Sensor
Winding Thermal 1	None
Winding Thermal 2	None

Nameplate

NP1404									
CAT.NO.	AEM3783-4								
SPEC.	07G087R447G1								
VOLTS	460								
AMP	3.9								
RPM	1760		HP	3					
FRAME	213		HZ	60		PH	3		
SER.F.	1.00		CODE	K		DES	B		CL F
NEMA-NOM-EFF	89.5		PF	81					
G.MIN.EFF	87.5		CC	010A					
RATING	65C AMB-CONT								
LUBRICATION	POLYREX EM								
DE	6307		ODE	6206					
ENCL	TEFC		SER. #						

Parts list

Part number	Description	Quantity
SA387993	SA 07G087R447G1	1.000 ea
RA378337	RA 07G087R447G1	1.000 ea
HW3201A05	3/8-16 EYEBOLT	1.000 ea
09CB1002A05	CONDUIT BOX, 1.00 N.P.T.	1.000 ea
07GS1000SP	GASKET, CONDUIT BOX, .125 THICK BLACK NE	1.000 ea
51XF2520A16	SCREW, HEX SER SLT HD, ZN 1/4-20X1.00LG TD	2.000 ea
11XW1032G06	10-32 X .38, TAPTITE II, HEX WSHR SLTD U	1.000 ea
HW3001B01	BRASS CUP WASHER, FOR #10 SCREW	1.000 ea
37EP1100A55	FR ENDPLATE MACH	1.000 ea
HW4500A19	1/4-28X1/4 SLOTTED PLUG F/S	1.000 ea
HW4500A20	1/8NPT SL PIPE PLUG	1.000 ea
HA4054	SHORT T-DRAIN FITTING, .125" N.P.T.	1.000 ea
HW5100A06	W2420-025 WVY WSHR (WB)	1.000 ea
37EP1101A28	PU ENDPLATE MACH	1.000 ea
HW4500A19	1/4-28X1/4 SLOTTED PLUG F/S	1.000 ea
HW4500A20	1/8NPT SL PIPE PLUG	1.000 ea
HA3104A32	THRUBOLT- 5/16-18 X12.750	4.000 ea
HA4054	SHORT T-DRAIN FITTING, .125" N.P.T.	1.000 ea
XY3118A12	5/16-18 HEX NUT DIRECTIONAL SERRATION	4.000 ea
51XB1214A20	12-14X1.25 HXWSSLD SERTYB	1.000 ea
07FH4007SP	PRIMED	1.000 ea
WD4100A03	DE-750 HEYCO PLUG 62MP0750 MICRO PLASTIC	1.000 ea
51XW1032A06	10-32 X .38, TAPTITE II, HEX WSHR SLTD S	3.000 ea
12CB1500A10	CONDUIT BOX LID, .31 MTG HOLES	1.000 ea
12GS1002	GASKET, CONDUIT BOX LID, NEOP	1.000 ea
10XN2520A24	1/4-20X 1 1/2 HEX HD X	2.000 ea
HA1005A02	SLINGER, OD 2.00, ID 1.14, 206 BRG,	1.000 ea
HA1005A07	SLINGER, OD 2.25, ID 1.344, 307 BRG	1.000 ea
HW2501E18	KEY, 1/4 SQ X 2.000	1.000 ea
HA7000A02	KEY RETAINER RING, 1 1/8 DIA, 1 3/8 DIA	1.000 ea
MJ5001A27	32220KN GRAY SEALER *MIN BUY 4 QTS=1GAL	0.001 qt

LB1624	COMBINED WARNING LABEL, ISO/ANSI PICTOGR	1.000 ea
85XU0407S04	4X1/4 U DRIVE PIN STAINLESS	2.000 ea
WD1000B03	BURNDY YAV14 TERML (1M/PK)	3.000 ea
MJ1000A02	GREASE, POLYREX EM EXXON	0.050 lb
37FN3002A01SP	EXFN, PLASTIC, 9.00 OD, 1.155 ID	1.000 ea
MG1025G02	WILKOFAS, 782.02, LIGHT GRAY	0.036 ga
NP1404	SS UL CSA CC "AUTOMOTIVE"	1.000 ea
LC0006	CONNECTION LABEL	1.000 ea
07PA1011	PKG GRP, 07 CAST IRON PK1181	1.000 ea
10XL3807A28	3/8-7 X 1 3/4" LAG SCREW	3.000 ea
MN416A01	TAG-INSTAL-MAINT no wire (2500bx)4/22	1.000 ea

AC Induction Motor Performance Data

Record # 60452

Typical performance - not guaranteed values

Winding: 07WGR447-R006		Type: 0728M		Enclosure: TEFC	
Nameplate Data			460 V, 60 Hz: Single Voltage Motor		
Rated Output (HP)	3	Full Load Torque	8.92 LB-FT		
Volts	460	Start Configuration	direct on line		
Full Load Amps	3.9	Breakdown Torque	31.5 LB-FT		
R.P.M.	1760	Pull-up Torque	16.4 LB-FT		
Hz	60	Locked-rotor Torque	20.7 LB-FT		
NEMA Design Code	B	Starting Current	32.6 A		
Service Factor (S.F.)	1	No-load Current	1.94 A		
NEMA Nom. Eff.	89.5	Line-line Res. @ 25°C	3.38 Ω		
Rating - Duty	65C AMB-CONT	Temp. Rise @ Rated Load	23°C		
		Locked-rotor Power Factor	40.6		
		Rotor inertia	0.689 LB-FT ²		

Load Characteristics 460 V, 60 Hz, 3 HP

% of Rated Load	25	50	75	100	125	150
Power Factor	39	61	74	81	84	84
Efficiency	82	88.3	90	90.1	89.5	89
Speed	1792	1784	1775	1766	1756	1746
Line amperes	2.21	2.6	3.18	3.87	4.69	5.64

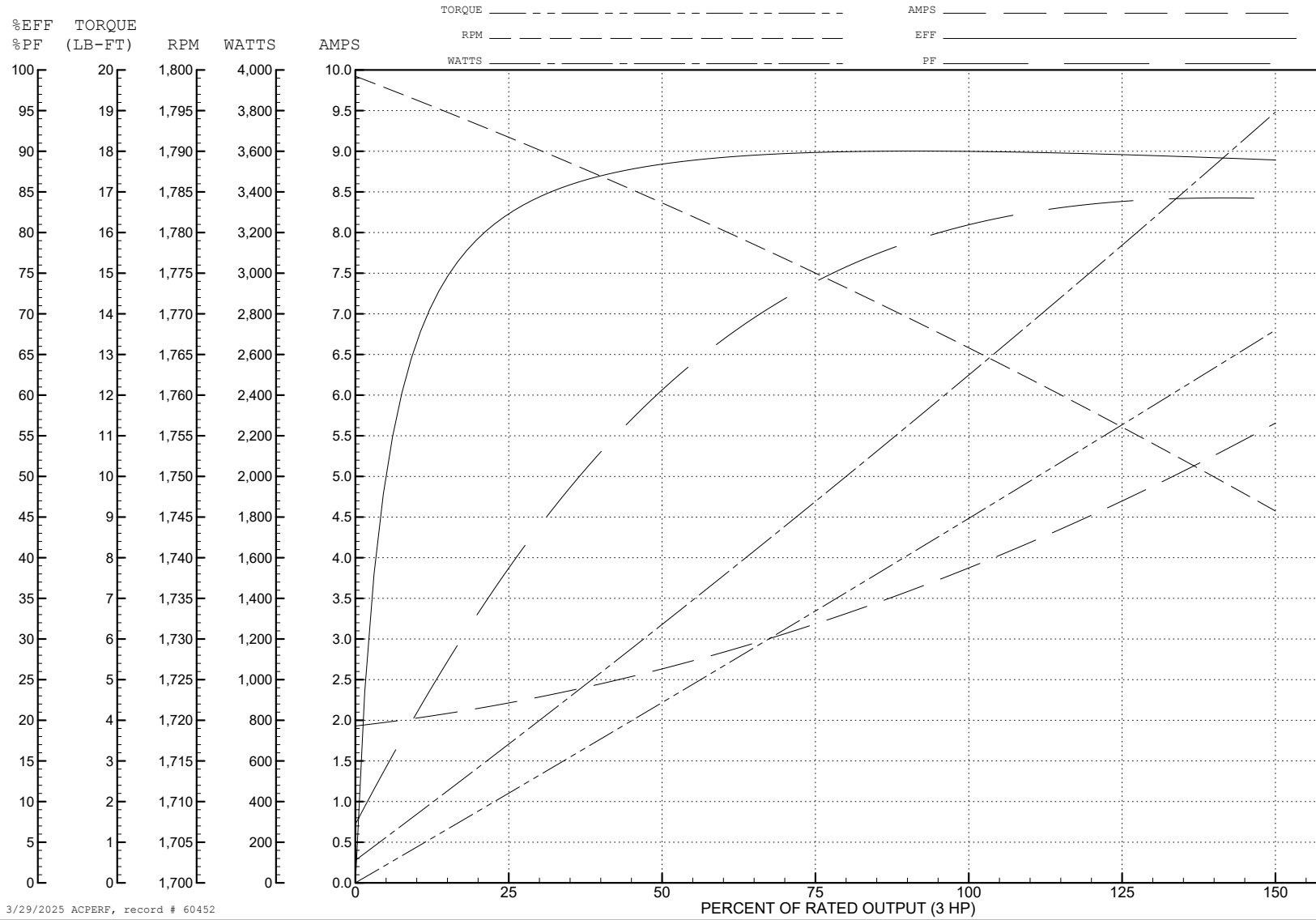
ABB Motors and Mechanical Inc.

WINDING # 07WGR447

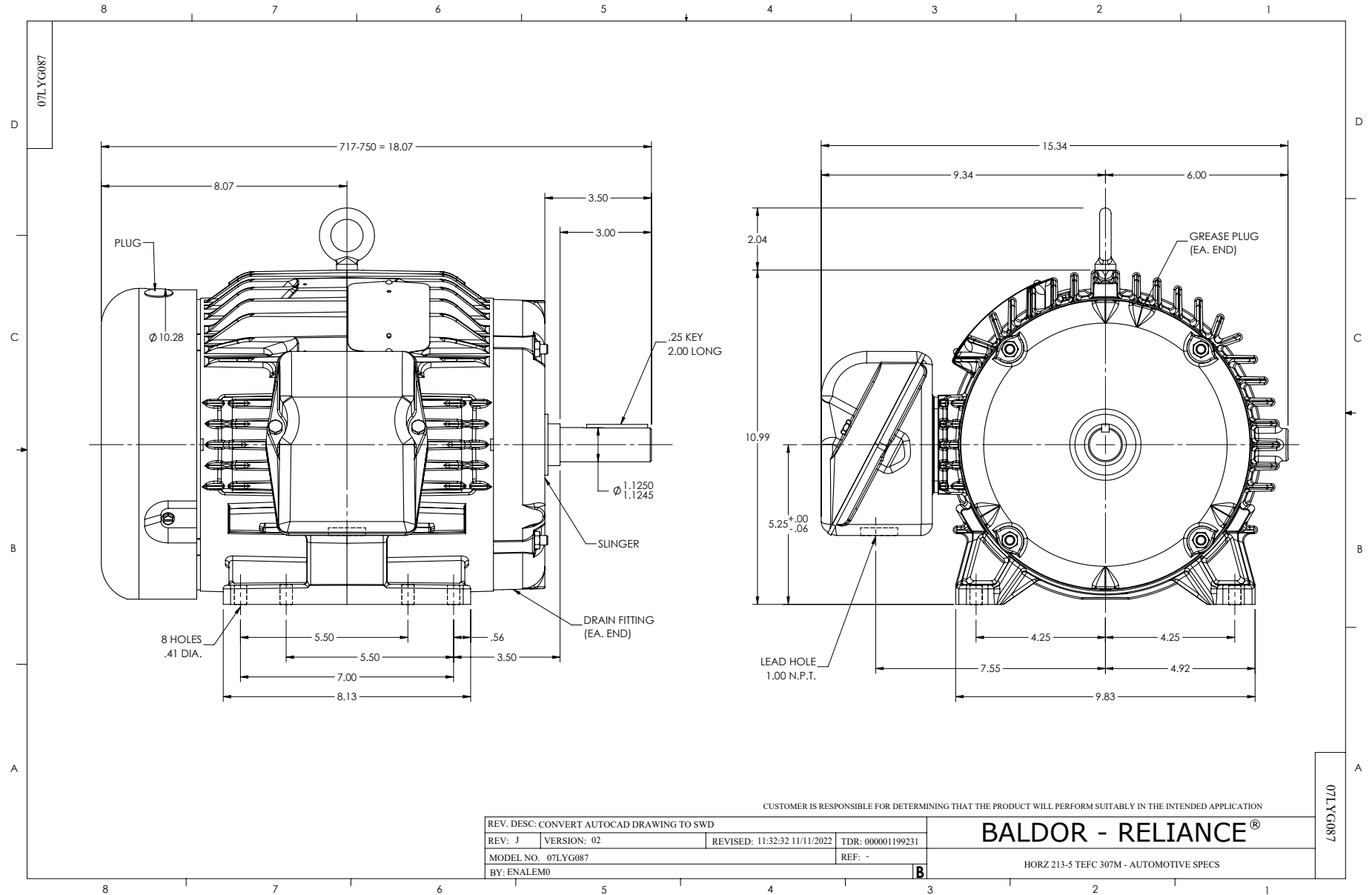
Typical performance - not guaranteed values.

3 HP 3 PH 60 HZ 1760 RPM 460 V 0728M

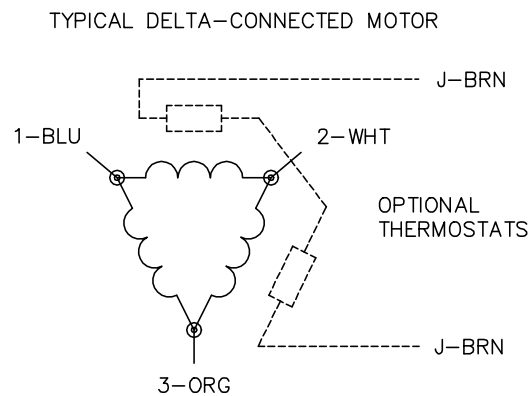
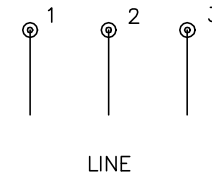
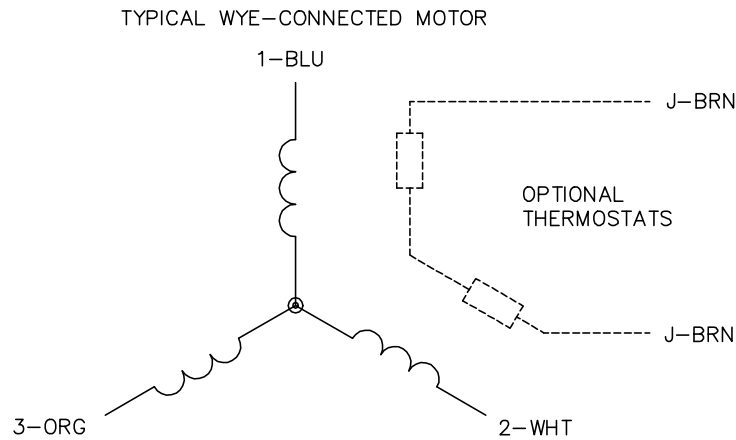
TORQUES (LB-FT): PO=31.5 PU=16.4 LR=20.7 LRA=32.6



3/29/2025 ACPERF, record # 60452



CD0006



NOTES:

1. THREE LEAD MOTOR MAY BE EITHER WYE CONNECTED OR DELTA CONNECTED.
2. INTERCHANGE ANY TWO LINE LEADS TO REVERSE ROTATION.
3. OPTIONAL THERMOSTATS ARE PROVIDED WHEN SPECIFIED.
4. ACTUAL NUMBER OF INTERNAL PARALLEL CIRCUITS MAY VARY.
5. LEAD COLORS ARE OPTIONAL. LEADS MUST BE NUMBERED AS SHOWN.

CD0006

REV. DESC: ADD CLASS CONN00000007		
REV. LTR: E	VERSION: 01	TDR: 000001099922
FILE: \AAA\00005\141	REVISED: 10:24:49 02/19/2019	BY: ENBRIRO
MTL: -	© □	

BALDOR - RELIANCE®

3PH, SV, 3 LEADS, WYE OR DELTA CONNECTED

SH 1 of 1