



Customer information packet

AEM4104-4

30HP, 1775RPM, 3PH, 60HZ, 326U, 1250M, TEFC, F1

Class - None

Division - Not Applicable

Specifications

Enclosure	TEFC
Frame	326U
Frame Material	Iron
Frequency	60.00 Hz
Haz Area Class and Group	None
Haz Area Division	Not Applicable
Motor Letter Type	Three Phase
Output @ Frequency	30.000 HP @ 60 HZ
Phase	3
Synchronous Speed @ Frequency	1800 RPM @ 60 HZ
Voltage @ Frequency	460.0 V @ 60 HZ
Agency Approvals	UR CSA
Ambient Temperature	65 °C
Auxillary Box	No Auxillary Box
Auxillary Box Lead Termination	None
Base Indicator	Rigid
Bearing Grease Type	Polyrex EM (-20F +300F)
Blower	None
Current @ Voltage	35.000 A @ 460.0 V
Design Code	B
Drip Cover	No Drip Cover
Duty Rating	CONT
Efficiency @ 100% Load	93.6 %
Electrically Isolated Bearing	Not Electrically Isolated
Feedback Device	NO FEEDBACK
Front Face Code	Standard
Front Shaft Indicator	None
Heater Indicator	No Heater
High Voltage Full Load Amps	35.0 a
Insulation Class	F
Inverter Code	Inverter Ready

Part detail

Revision	AD
Type	AC
Mech. spec.	12H79
Base	
Status	PRD/A
Elec. spec.	12WGX202
Layout	12LYH079
Eff. date	08-01-2023
CD Diagram	CD0006
Poles	04
Leads	3#8
Proprietary	False
Created date	01-01-0001

KVA Code	G
Lifting Lugs	Standard Lifting Lugs
Locked Bearing Indicator	Locked Bearing
Motor Lead Exit	Ko Box
Motor Lead Quantity/Wire Size	3 @ 8 AWG
Motor Lead Termination	Ring Terminals
Motor Standards	NEMA
Motor Type	1250M
Mounting Arrangement	F1
Number of Poles	4
Overall Length	30.66 IN
Power Factor	86
Product Family	Automotive (Not For DC)
Pulley End Bearing Type	Ball
Pulley Face Code	Standard
Pulley Shaft Indicator	Standard
Rodent Screen	None
Service Factor	1.00
Shaft Diameter	1.875 IN
Shaft Extension Location	Pulley End
Shaft Ground Indicator	No Shaft Grounding
Shaft Rotation	Reversible
Shaft Slinger Indicator	Shaft Slinger
Speed	1775 rpm
Speed Code	Single Speed
Starting Method	Direct on line
Thermal Device - Bearing	NONE (OLD)
Thermal Device - Winding	None
Vibration Sensor Indicator	No Vibration Sensor
Winding Thermal 1	None
Winding Thermal 2	None

Nameplate

NP1404									
CAT.NO.	AEM4104-4								
SPEC.	12H079X202G1								
VOLTS	460								
AMP	35								
RPM	1775		HP	30					
FRAME	326U	HZ	60		PH	3			
SER.F.	1.00	CODE	G	DES	B	CL	F		
NEMA-NOM-EFF	93.6	PF	86						
G.MIN.EFF	92.4	CC	010A						
RATING	65C AMB-CONT								
LUBRICATION	POLYREX EM								
DE	6312	ODE	6311						
ENCL	TEFC	SER. #							

Parts list

Part number	Description	Quantity
SA055609	SA 12H079X202G1	1.000 ea
RA050202	RA 12H079X202G1	1.000 ea
10CB1000A04P	KO BOX, MACH W/2.00 NPT W/EPOXY PRIMER	1.000 ea
09GS1010	GASKET, DWG, LEADWIRE SEPERATOR	1.000 ea
10XN3118K16	5/16-18 X 1' GRADE #5, STL, ZINC PLATE	4.000 ea
HW1001A31	LOCKWASHER 5/16, ZINC PLT.591 OD, .319 I	4.000 ea
WD1000B16	T&B CX70TN OR L70P TERMINAL LUG	1.000 ea
10XN2520K06	1/4-20 X 3/8" HX HD SCREWGRADE 5, ZINC P	1.000 ea
HW1001A25	LOCKWASHER 1/4, ZINC PLT .493 OD, .255 I	1.000 ea
12EP1107A05P	FR ENDPLATE, MACH W/EPOXY PRIMER	1.000 ea
HA3400A13	STUD, 1/2-13 X 7" WELKER	4.000 ea
HW1001A50	LOCKWASHER 1/2, ZINC PLT,.879 OD, .509 I	4.000 ea
HA1005A04	SLINGER, OD 3.620, ID 1.98,	1.000 ea
HW4600B41	V-RING SLINGER 2.125 X 2.880 X 0.280	1.000 ea
10CB1500P	CONDUIT BOX LID, CAST W/EPOXY PRIMER	1.000 ea
12FH1002P	FAN COVER, CAST W/EPOXY PRIMER	1.000 ea
HW5100A13	W4627-047 WVY WSHR	1.000 ea
12EP1106A02P	PU ENDPLATE, MACH W/EPOXY PRIMER	1.000 ea
10XN3118K40	5/16-18 X 2.25" HEX HD, GRADE 5	2.000 ea
10XN3118K40	5/16-18 X 2.50" HEX HD, GRADE 5	4.000 ea
10XN5013K28	1/2-13 X 1.75 HEX HEAD MACH SCREW,GRAD	4.000 ea
HW1001A50	LOCKWASHER 1/2, ZINC PLT,.879 OD, .509 I	4.000 ea
XY5013A12	NUT,1/2-13,HEX,STEEL,ZINCPLATED	4.000 ea
HW1001A50	LOCKWASHER 1/2, ZINC PLT,.879 OD, .509 I	4.000 ea
14GS1003	GASKET CONDUIT BOX LID, NEOP	1.000 ea
10XN2520K16	1/4-20 X 1" HX HD SCRW GRADE 5, ZINC P	4.000 ea
HW1001A25	LOCKWASHER 1/4, ZINC PLT .493 OD, .255 I	4.000 ea
MJ5001A27	32220KN GRAY SEALER *MIN BUY 4 QTS=1GAL	0.031 qt
MJ5004A04	ADHESIVE LOCTITE 609	0.005 ea
MJ5001A14	DYNAPRO SEALANT, CP MTR VC#2508050 (603	0.001 ea
MJ5002A01	SILICON RUBBER SEALANT, 732CL 10.3 OZ TU	0.050 ea

HW2501H38	KEY, 1/2 SQ X 4.500	1.000 ea
HW4500A20	1/8NPT SL PIPE PLUG	2.000 ea
HA4054	SHORT T-DRAIN FITTING, .125" N.P.T.	1.000 ea
MJ1000A02	GREASE, POLYREX EM EXXON	0.200 lb
HW4500A20	1/8NPT SL PIPE PLUG	3.000 ea
09FN3001B03SP	EXTERNAL FAN, PLASTIC (COMES W/SCREW FRO	1.000 ea
HW2500A25	WOODRUFF KEY USA #1008 #BLOW CARBON STEE	1.000 ea
MG1025G02	WILKOFAS, 782.02, LIGHT GRAY	0.080 ga
85XU0407S04	4X1/4 U DRIVE PIN STAINLESS	2.000 ea
MN416A01	TAG-INSTAL-MAINT no wire (2500bx)4/22	1.000 ea
WD1000B12	T&B D71, RING TERM, 8AWG, .25 STUD	3.000 ea
LB1624	COMBINED WARNING LABEL, ISO/ANSI PICTOGR	1.000 ea
LC0006	CONNECTION LABEL	1.000 ea
NP1404	SS UL CSA CC "AUTOMOTIVE"	1.000 ea
12PA1000	PACKAGING GROUP PRINT PK1024A07	1.000 ea

Accessories

Part number	Description	Multiplier
12-1105	C FACE KIT	A8

AC Induction Motor Performance Data

Record # 3386

Typical performance - not guaranteed values

Winding: 12WGX202-R001		Type: 1250M		Enclosure: TEFC	
Nameplate Data			460 V, 60 Hz: Single Voltage Motor		
Rated Output (HP)	30	Full Load Torque	89 LB-FT		
Volts	460	Start Configuration	direct on line		
Full Load Amps	35	Breakdown Torque	256 LB-FT		
R.P.M.	1775	Pull-up Torque	104 LB-FT		
Hz	60 Phase	3	Locked-rotor Torque	140 LB-FT	
NEMA Design Code	B KVA Code	G	Starting Current	218 A	
Service Factor (S.F.)		1	No-load Current	11.2 A	
NEMA Nom. Eff.	93.6 Power Factor	86	Line-line Res. @ 25°C	0.217 Ω	
Rating - Duty	65C AMB-CONT		Temp. Rise @ Rated Load	54°C	
			Locked-rotor Power Factor	27	
			Rotor inertia	6.66 LB-FT ²	

Load Characteristics 460 V, 60 Hz, 30 HP

% of Rated Load	25	50	75	100	125	150
Power Factor	57	77	84	86	87	86
Efficiency	88.3	92.7	93.7	93.8	93.5	92.9
Speed	1794	1789	1782	1776	1770	1762
Line amperes	14.2	19.9	27.1	35.2	43.5	52.5

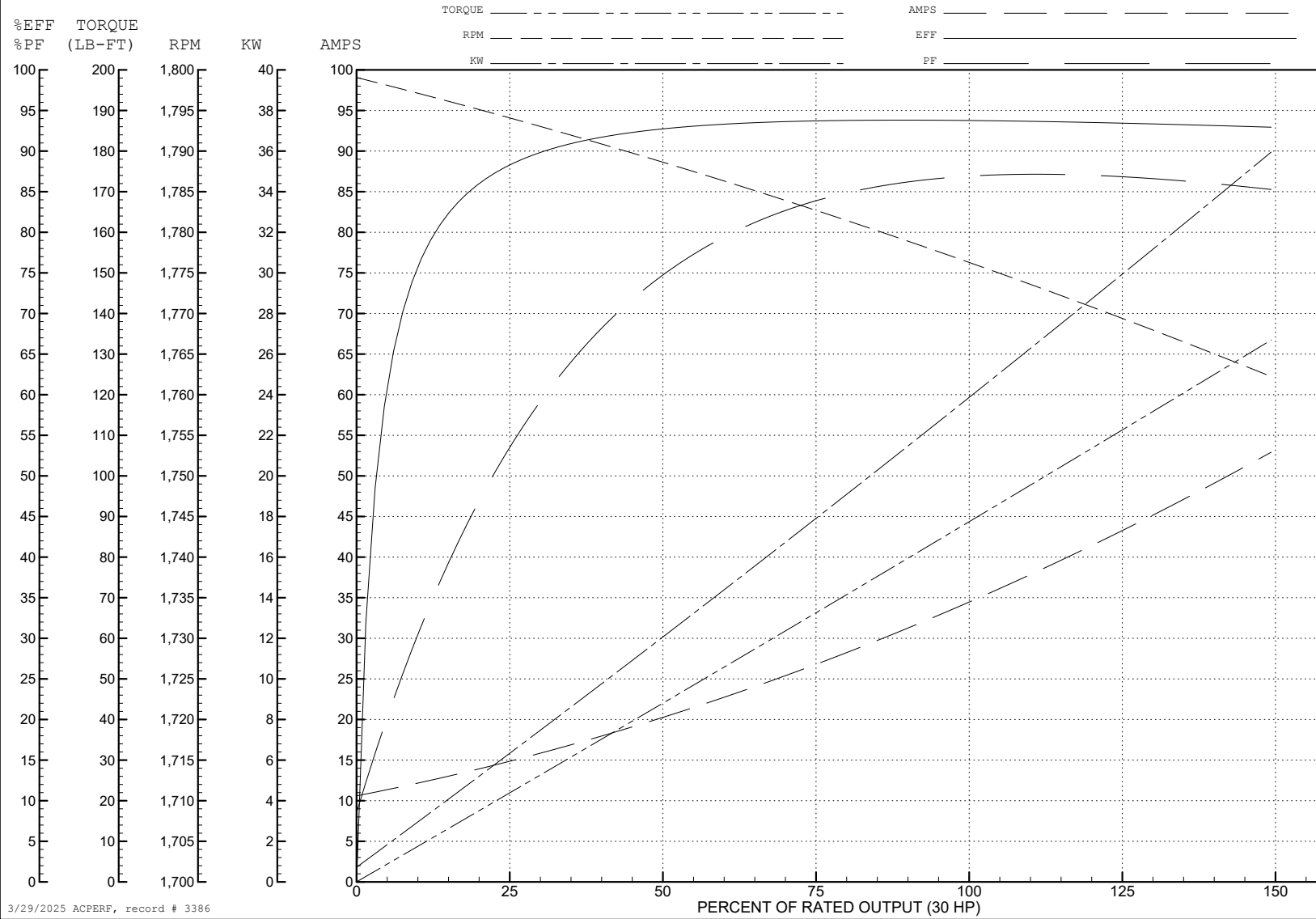
ABB Motors and Mechanical Inc.

WINDING # 12WGx202

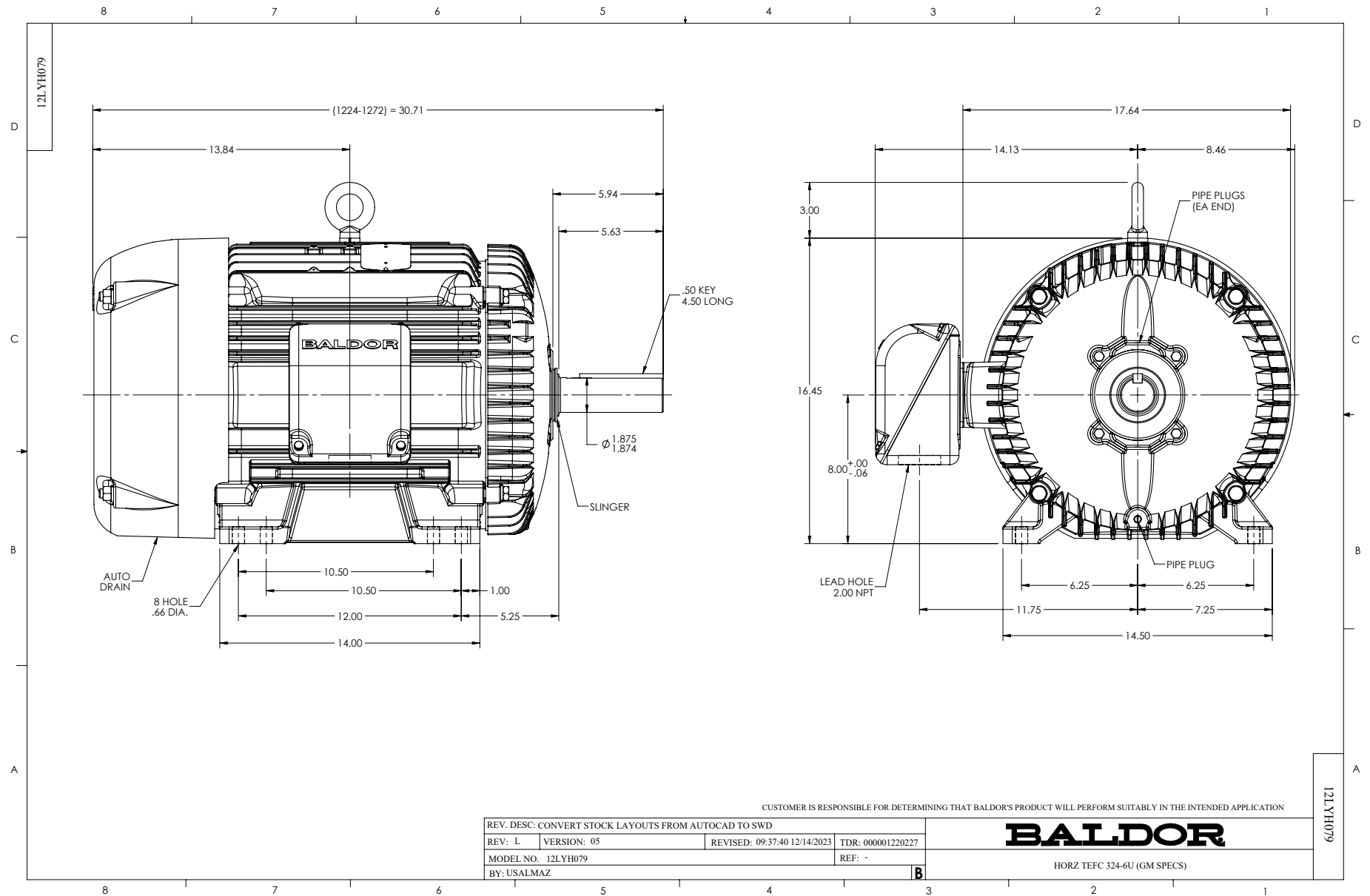
30 HP 3 PH 60 HZ 1775 RPM 460 V 1250M

Typical performance - not guaranteed values.

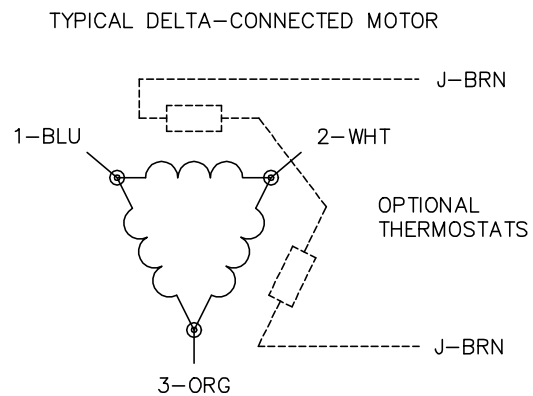
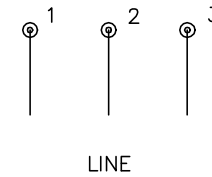
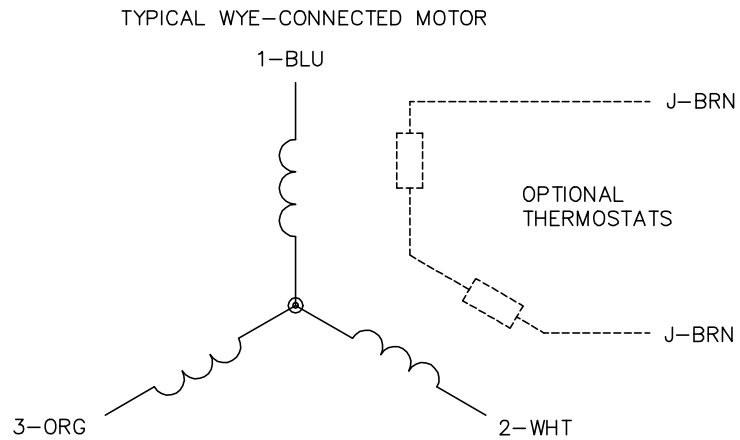
TORQUES (LB-FT): PO=256 PU=104 LR=140 LRA=218



3/29/2025 ACPERF, record # 3386



CD0006



NOTES:

1. THREE LEAD MOTOR MAY BE EITHER WYE CONNECTED OR DELTA CONNECTED.
2. INTERCHANGE ANY TWO LINE LEADS TO REVERSE ROTATION.
3. OPTIONAL THERMOSTATS ARE PROVIDED WHEN SPECIFIED.
4. ACTUAL NUMBER OF INTERNAL PARALLEL CIRCUITS MAY VARY.
5. LEAD COLORS ARE OPTIONAL. LEADS MUST BE NUMBERED AS SHOWN.

CD0006

REV. DESC: ADD CLASS CONN00000007		
REV. LTR: E	VERSION: 01	TDR: 000001099922
FILE: \AAA\00005\141	REVISED: 10:24:49 02/19/2019	BY: ENBRIRO
MTL: -	© □	

BALDOR - RELIANCE®

3PH, SV, 3 LEADS, WYE OR DELTA CONNECTED

SH 1 of 1