

BALDOR • RELIANCE

Customer information packet

AFL3520A

.75HP, 3450RPM, 1PH, 60HZ, 56Z, 3420L, TEAO, F1

Class - None

Division - Not Applicable

Specifications

Enclosure	TEAO
Frame	56Z
Frame Material	Steel
Frequency	60.00 Hz
Haz Area Class and Group	None
Haz Area Division	Not Applicable
Motor Letter Type	Cap Start, Induction Run
Output @ Frequency	.750 HP @ 60 HZ
Phase	1
Synchronous Speed @ Frequency	3600 RPM @ 60 HZ
Voltage @ Frequency	115.0 V @ 60 HZ 230.0 V @ 60 HZ
Agency Approvals	UR CSA
Ambient Temperature	40 °C
Auxillary Box	No Auxillary Box
Auxillary Box Lead Termination	None
Base Indicator	Rigid
Bearing Grease Type	Polyrex EM (-20F +300F)
Blower	None
Current @ Voltage	11.000 A @ 115.0 V 5.500 A @ 230.0 V
Design Code	N
Drip Cover	No Drip Cover
Duty Rating	CONT
Efficiency @ 100% Load	71.0 %
Electrically Isolated Bearing	Not Electrically Isolated
Feedback Device	NO FEEDBACK
Front Face Code	Terminal Panel
Front Shaft Indicator	None
Heater Indicator	No Heater
High Voltage Full Load Amps	5.5 a

Part detail

Revision	AF
Type	AC
Mech. spec.	34K048
Base	
Status	PRD/A
Elec. spec.	34WG0656
Layout	34LYK048
Eff. date	07-25-2024
CD Diagram	CD0052
Poles	02
Leads	6#18,1#14 #1TH
Proprietary	False
Created date	01-01-0001

Insulation Class	B
Inverter Code	Not Inverter
KVA Code	J
Lifting Lugs	No Lifting Lugs
Locked Bearing Indicator	No Locked Bearing
Motor Lead Exit	Lead Hole
Motor Lead Quantity/Wire Size	6 @ 18 AWG
Motor Lead Termination	Cord And Plug
Motor Standards	NEMA
Motor Type	3420L
Mounting Arrangement	F1
Number of Poles	2
Overall Length	11.59 IN
Power Factor	68
Product Family	General Purpose
Pulley End Bearing Type	Sealed Bearing
Pulley Face Code	Standard
Pulley Shaft Indicator	Tapped & Key
Rodent Screen	None
Service Factor	1.00
Shaft Diameter	0.625 IN
Shaft Extension Location	Pulley End
Shaft Ground Indicator	No Shaft Grounding
Shaft Rotation	Reversible: Connected Standard
Shaft Slinger Indicator	No Slinger
Speed	3450 rpm
Speed Code	Single Speed
Starting Method	Direct on line
Thermal Device - Bearing	None
Thermal Device - Winding	None
Vibration Sensor Indicator	No Vibration Sensor
Winding Thermal 1	Automatic Thermal Overload
Winding Thermal 1 Location	SB

Nameplate

NP1280L							
CAT.NO.	AFL3520A						
SPEC.	34K48-656						
HP	.75						
VOLTS	115/230						
AMP	11/5.5						
RPM	3450						
FRAME	56Z	HZ	60	PH	1		
SER.F.	1.00	CODE	J	DES	N	CL	B
NEMA-NOM-EFF	71	PF	68				
RATING	40C AMB-CONT						
CC							
DE	6203	ODE	6203				
ENCL	TEAO	SN					

Parts list

Part number	Description	Quantity
SA008195	SA 34K48-656	1.000 ea
RA004642	RA 34K48-656	1.000 ea
EC1270A02SP	ELEC CAP, 270-324 MFD, 125V, 1.48D X 3.	1.000 ea
WD4100A01	DP-875 HEYCO PLUG OR 62MP0875 MICRO PLAS	1.000 ea
RM1001A01	GROMMET "MIDSTATES"	1.000 ea
34EP3204A01SP	FR ENDPLATE, MACH	1.000 ea
11XW0832G06	#8-32 X 3/8, TAPTITE II, HEX WSHR SLTD	1.000 ea
51XW0832A07	8-32 X .44, TAPTITE II, HEX WSHR SLTD SE	3.000 ea
NS2500A01	INSULATOR, AUTO THER PROT	1.000 ea
SP5068A01	34L TERM PANEL STAT SWITCH #E-6"	1.000 ea
MN416A01	TAG-INSTAL-MAINT no wire (2500bx)4/22	1.000 ea
34CB4800SP	CAPACITOR COVER, STAMPED PRIMED	1.000 ea
34GS3000SP	GASKET, CAPACITOR BOX	1.000 ea
51XB1016A05	10-16X5/16HX WA SL SR TYB (F/S)	2.000 ea
WD1000A03	41531 AMP FLG.TERM,4M/REEL(2.5MIL)	1.000 ea
HW5100A03	WAVY WASHER (W1543-017)	1.000 ea
34EP3102A02SP	FR/PU ENDPLATE, MACH	1.000 ea
XY1032A02	10-32 HEX NUT DIRECTIONAL SERRATION	4.000 ea
34CB4501SP	TERMINAL BOX LID, STAMPED X (PLATED)	1.000 ea
34GS1005	GASKET, TERM PLATE LID	1.000 ea
51XW0832A07	8-32 X .44, TAPTITE II, HEX WSHR SLTD SE	2.000 ea
HW2501D13	KEY, 3/16 SQ X 1.375	1.000 ea
HA7000A04	KEY RETAINER 0.625 DIA SHAFTS	1.000 ea
MG1025C02	WILKOFASST SG, 787.105, TAN	0.014 ga
85XU0407S04	4X1/4 U DRIVE PIN STAINLESS	2.000 ea
HA3100A44	THRUBOLT 10-32 X 8.000	4.000 ea
LB1118	LABEL,WARNING (ROLL LABEL)	1.000 ea
LC0052	CONNECTION LABEL	1.000 ea
NP1280L	ALUM FARM DUTY UL CC THERMAL	1.000 ea
34PA1002	PKG GRP, PRINT PK1001A01	1.000 ea
WD1000A15	3-520132-2 AMP FLAG (4M/RL NON-CANC/NON-	1.000 ea

WD1000A16

2-520128-2 AMP FLAG TERMINAL(4M/RL)

7.000 ea

AC Induction Motor Performance Data

Record # 50784

Typical performance - not guaranteed values

Winding: 34WG0656-R001		Type: 3420L		Enclosure: TEAO	
Nameplate Data			230 V, 60 Hz: High Voltage Connection		
Rated Output (HP)	.75		Full Load Torque	1.2 LB-FT	
Volts	115/230		Start Configuration	direct on line	
Full Load Amps	11/5.5		Breakdown Torque	2.88 LB-FT	
R.P.M.	3450		Pull-up Torque	2.25 LB-FT	
Hz	60 Phase	1	Locked-rotor Torque	3.25 LB-FT	
NEMA Design Code	N KVA Code	J	Starting Current	25 A	
Service Factor (S.F.)	1		No-load Current	4.07 A	
NEMA Nom. Eff.	71 Power Factor	68	Line-line Res. @ 25°C	3.18 Ω A Ph 2.53 Ω B Ph	
Rating - Duty	40C AMB-CONT		Temp. Rise @ Rated Load		

Load Characteristics 230 V, 60 Hz, 0.75 HP

% of Rated Load	25	50	75	100	125	150
Power Factor	35	49	61	70	75	80
Efficiency	42	58	64	66	65	63
Speed	3557	3522	3485	3440	3399	3320
Line amperes	4.16	4.3	4.7	5.4	5.9	7

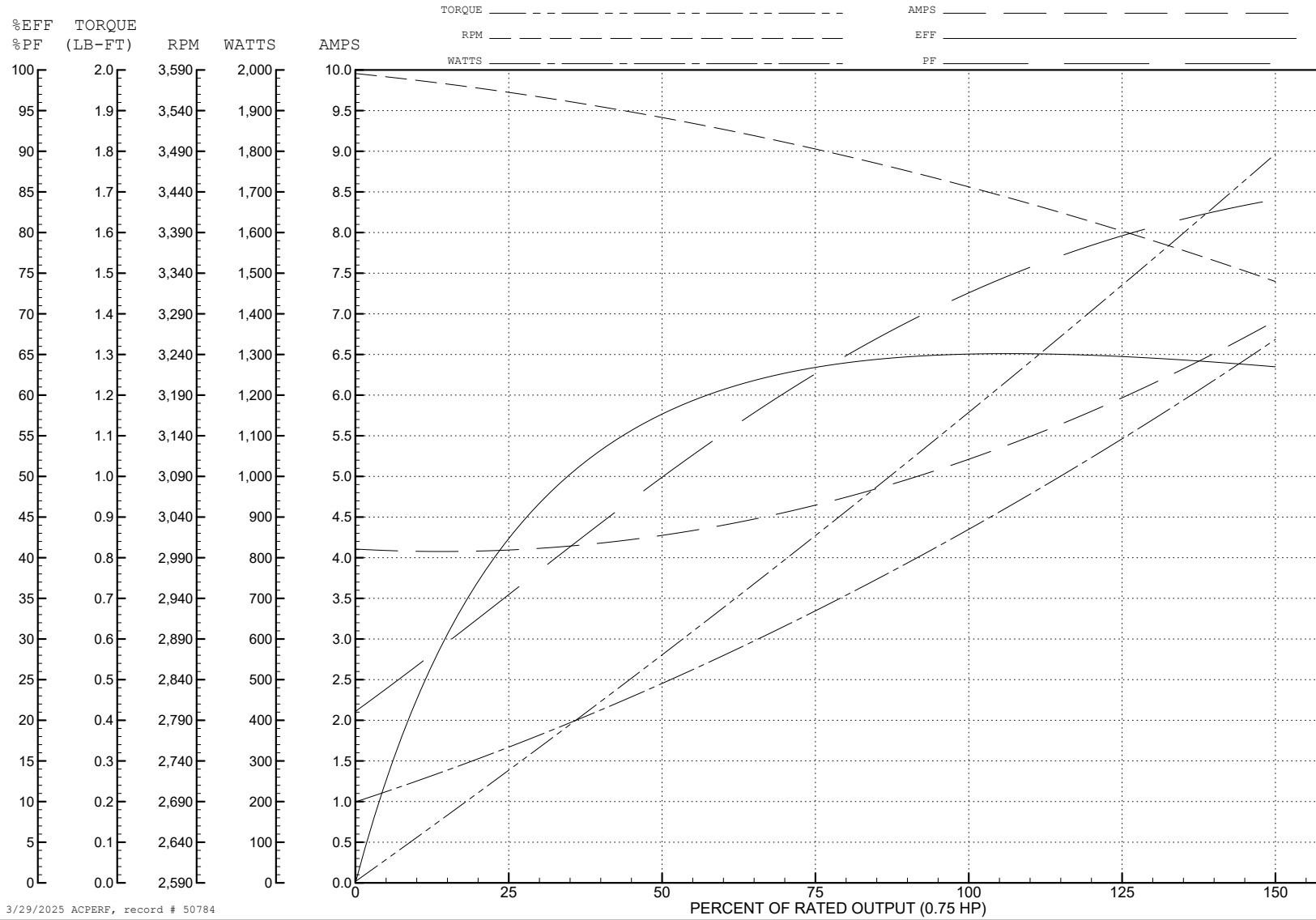
ABB Motors and Mechanical Inc.

WINDING # 34WG0656

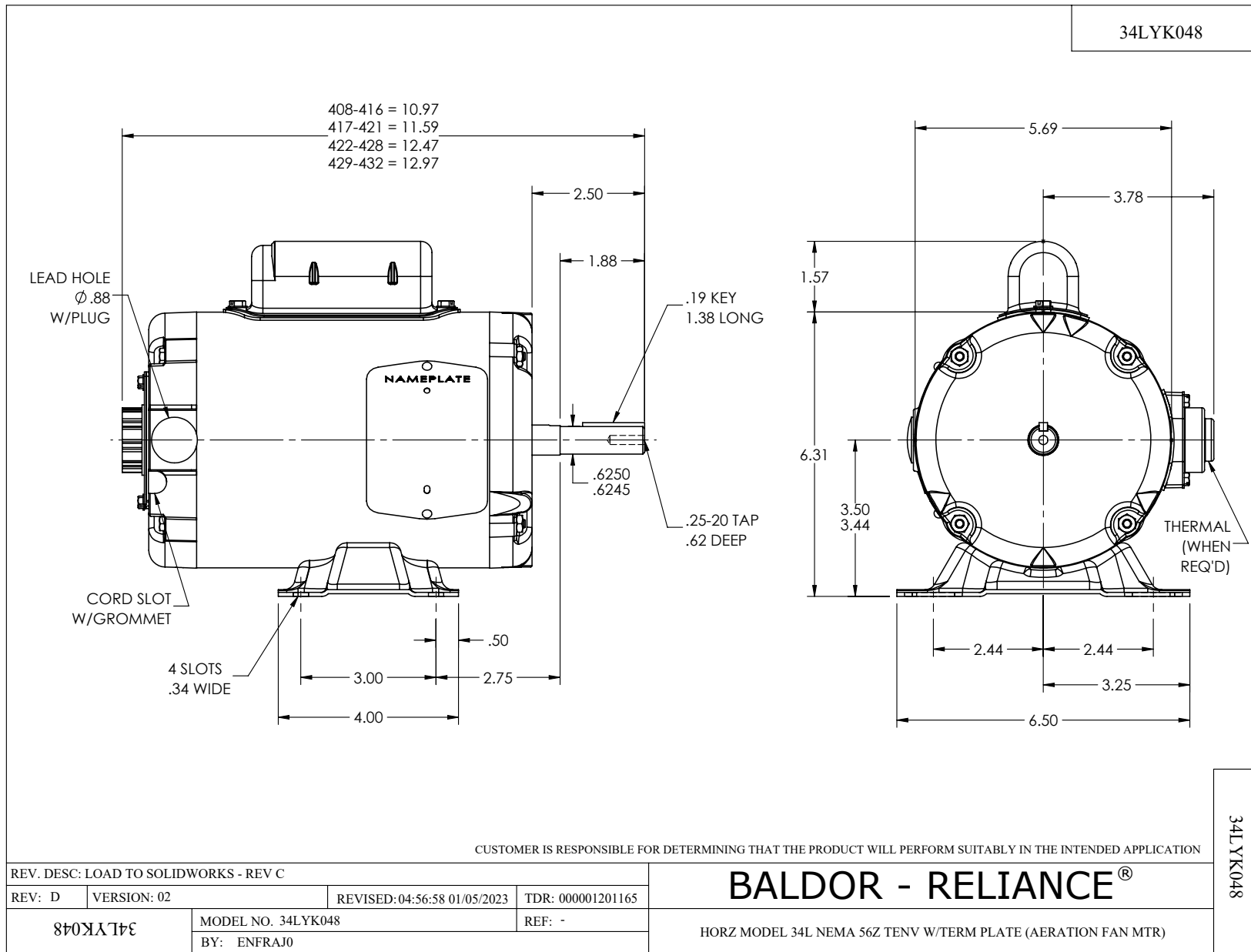
Typical performance - not guaranteed values.

0.75 HP 1 PH 60 HZ 3450 RPM 230 V 3420L

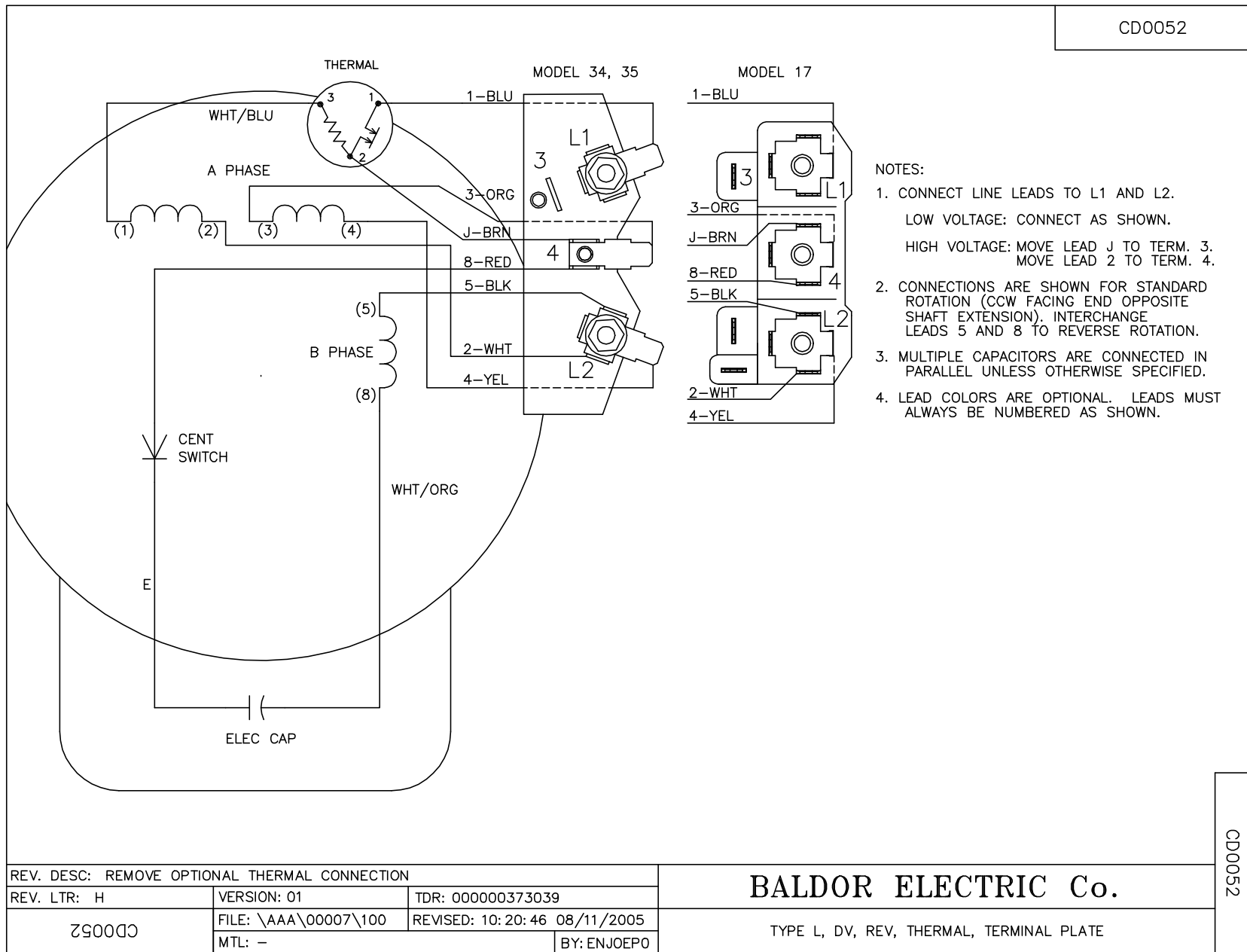
TORQUES (LB-FT): PO=2.88 PU=2.25 LR=3.25 LRA=25



3/29/2025 ACPERF, record # 50784



CD0052



REV. DESC: REMOVE OPTIONAL THERMAL CONNECTION		
REV. LTR: H	VERSION: 01	TDR: 000000373039
CD0052	FILE: \AAA\00007\100	REVISED: 10:20:46 08/11/2005
	MTL: -	BY: ENJOEPO

BALDOR ELECTRIC Co.

TYPE L, DV, REV, THERMAL, TERMINAL PLATE

CD0052