

**BALDOR • RELIANCE**

---

# Customer information packet

## AFL3523A

2HP, 3450RPM, 1PH, 60HZ, 143TZ, 3535L, TEAO, F1

Class - None

Division - Not Applicable

## Specifications

Enclosure	TEAO
Frame	143TZ
Frame Material	Steel
Frequency	60.00 Hz
Haz Area Class and Group	None
Haz Area Division	Not Applicable
Motor Letter Type	Cap Start, Induction Run
Output @ Frequency	2.000 HP @ 60 HZ
Phase	1
Synchronous Speed @ Frequency	3600 RPM @ 60 HZ
Voltage @ Frequency	230.0 V @ 60 HZ 115.0 V @ 60 HZ
Agency Approvals	CSA UR
Ambient Temperature	40 °C
Auxillary Box	No Auxillary Box
Auxillary Box Lead Termination	None
Base Indicator	Rigid
Bearing Grease Type	Polyrex EM (-20F +300F)
Blower	None
Current @ Voltage	23.000 A @ 115.0 V 11.500 A @ 230.0 V
Design Code	L
Drip Cover	No Drip Cover
Duty Rating	CONT
Efficiency @ 100% Load	74.0 %
Electrically Isolated Bearing	Not Electrically Isolated
Feedback Device	NO FEEDBACK
Front Face Code	Terminal Panel
Front Shaft Indicator	None
Heater Indicator	No Heater
High Voltage Full Load Amps	11.5 a

## Part detail

Revision	AM
Type	AC
Mech. spec.	35T889
Base	
Status	PRD/A
Elec. spec.	35WG5184
Layout	35LYT889
Eff. date	07-25-2024
CD Diagram	CD0052
Poles	02
Leads	4#14 A&J,2#18 B PH,1#12 #1TH
Proprietary	False
Created date	06-22-2007

<b>Insulation Class</b>	B
<b>Inverter Code</b>	Not Inverter
<b>KVA Code</b>	K
<b>Lifting Lugs</b>	No Lifting Lugs
<b>Locked Bearing Indicator</b>	No Locked Bearing
<b>Motor Lead Exit</b>	Terminal Panel Or Lead Hole
<b>Motor Lead Quantity/Wire Size</b>	4 @ 14 AWG, A&J
<b>Motor Lead Termination</b>	Flying Leads
<b>Motor Standards</b>	NEMA
<b>Motor Type</b>	3535L
<b>Mounting Arrangement</b>	F1
<b>Number of Poles</b>	2
<b>Overall Length</b>	13.61 IN
<b>Power Factor</b>	82
<b>Product Family</b>	General Purpose
<b>Pulley End Bearing Type</b>	Ball
<b>Pulley Face Code</b>	Standard
<b>Pulley Shaft Indicator</b>	Tapped & Key
<b>Rodent Screen</b>	None
<b>RoHS Status</b>	ROHS COMPLIANT
<b>Service Factor</b>	1.00
<b>Shaft Diameter</b>	0.875 IN
<b>Shaft Extension Location</b>	Pulley End
<b>Shaft Ground Indicator</b>	No Shaft Grounding
<b>Shaft Rotation</b>	Reversible: Connected Standard
<b>Shaft Slinger Indicator</b>	No Slinger
<b>Speed</b>	3450 rpm
<b>Speed Code</b>	Single Speed
<b>Starting Method</b>	Direct on line
<b>Thermal Device - Bearing</b>	None
<b>Thermal Device - Winding</b>	None
<b>Vibration Sensor Indicator</b>	No Vibration Sensor
<b>Winding Thermal 1</b>	Automatic Thermal Overload
<b>Winding Thermal 1 Location</b>	SB

**Winding Thermal 2**

**None**

---

**Nameplate**

NP1280L							
<b>CAT.NO.</b>	AFL3523A						
<b>SPEC.</b>	35T889-5184						
<b>HP</b>	2						
<b>VOLTS</b>	115/230						
<b>AMP</b>	23/11.5						
<b>RPM</b>	3450						
<b>FRAME</b>	143TZ	<b>HZ</b>	60	<b>PH</b>	1		
<b>SER.F.</b>	1.00	<b>CODE</b>	K	<b>DES</b>	L	<b>CL</b>	B
<b>NEMA-NOM-EFF</b>	74	<b>PF</b>	82				
<b>RATING</b>	40C AMB-CONT						
<b>CC</b>							
<b>DE</b>	6205	<b>ODE</b>	6203				
<b>ENCL</b>	TEAO	<b>SN</b>					

## Parts list

Part number	Description	Quantity
SA111026	SA 35T889-5184	1.000 ea
RA102405	RA 35T889-5184	1.000 ea
EC1645A06SP	ELEC CAP, 645-774 MFD, 125V, 2.06D X 4.	1.000 ea
RM1001A01	GROMMET "MIDSTATES"	1.000 ea
11XW0832G06	#8-32 X 3/8, TAPTITE II, HEX WSHR SLTD	1.000 ea
35EP3102A02SP	FR ENDPLATE, MACH	1.000 ea
HW4500A01	1641B(ALEMITE)400 UNIV, GREASE FITT	1.000 ea
51XW0832A07	8-32 X .44, TAPTITE II, HEX WSHR SLTD SE	3.000 ea
51XW0832A07	8-32 X .44, TAPTITE II, HEX WSHR SLTD SE	2.000 ea
51XB1016A05	10-16X5/16HX WA SL SR TYB (F/S)	2.000 ea
HW5100A03	WAVY WASHER (W1543-017)	1.000 ea
35EP3123F00	MASTER DE,205 BRG,.998SH,#26 DRN,GRSR	1.000 ea
HW4500A01	1641B(ALEMITE)400 UNIV, GREASE FITT	1.000 ea
XY1032A02	10-32 HEX NUT DIRECTIONAL SERRATION	4.000 ea
WD4100A01	DP-875 HEYCO PLUG OR 62MP0875 MICRO PLAS	1.000 ea
35CB4500SP	TERMINAL BOX LID STAMPED	1.000 ea
35GS1002	GASKET,1/16 THICK LEXIDE	1.000 ea
HW2501D13	KEY, 3/16 SQ X 1.375	1.000 ea
HA7000A01	KEY RETAINER 7/8" DIA SHAFT	1.000 ea
85XU0407S04	4X1/4 U DRIVE PIN STAINLESS	2.000 ea
WD1000A15	3-520132-2 AMP FLAG (4M/RL NON-CANC/NON-	2.000 ea
MJ1000A02	GREASE, POLYREX EM EXXON	0.050 lb
MG1025C02	WILKOFASG SG, 787.105, TAN	0.017 ga
HA3100A22	THRUBOLT 10-32 X 10.125	4.000 ea
35CB4802A02SP	CAPACITOR COVER, STAMPED X	1.000 ea
35GS3001A02	GASKET, CA.COVER, 5.38 LONG .06 CS301	1.000 ea
SP5066A01	35 TERM PANEL SWITCH W/E-BLK, 8-RED	1.000 ea
LB1118	LABEL,WARNING (ROLL LABEL)	1.000 ea
LC0052	CONNECTION LABEL	1.000 ea
NP1280L	ALUM FARM DUTY UL CC THERMAL	1.000 ea
35PA1066	PKG GRP, PRINT PK1008A06	1.000 ea

PE-0000001

ZRTG PE ASSEMBLY

1.000 ea

---

**AC Induction Motor Performance Data**

Record # 53087

Typical performance - not guaranteed values

Winding: 35WG5184-R001		Type: 3535L	Enclosure: TEFC	
<b>Nameplate Data</b>			<b>230 V, 60 Hz: High Voltage Connection</b>	
Rated Output (HP)	2	Full Load Torque	3.05 LB-FT	
Volts	115/230	Start Configuration	direct on line	
Full Load Amps	23/11.5	Breakdown Torque	9.75 LB-FT	
R.P.M.	3450	Pull-up Torque	6.63 LB-FT	
Hz	60 Phase	1	Locked-rotor Torque	7.22 LB-FT
NEMA Design Code	L KVA Code	K	Starting Current	79.3 A
Service Factor (S.F.)		1	No-load Current	6.71 A
NEMA Nom. Eff.	74 Power Factor	82	Line-line Res. @ 25°C	0.91834 Ω A Ph 1.023 Ω B Ph
Rating - Duty	40C AMB-CONT		Temp. Rise @ Rated Load	79°C

**Load Characteristics 230 V, 60 Hz, 2 HP**

% of Rated Load	25	50	75	100	125	150
Power Factor	46	61	71	78	82	85
Efficiency	50.9	66.8	73.6	76.2	76.5	75.5
Speed	3575.5	3559.4	3542.1	3522.8	3500.8	3476
Line amperes	7.3	8.23	9.57	11.2	13.1	15.3



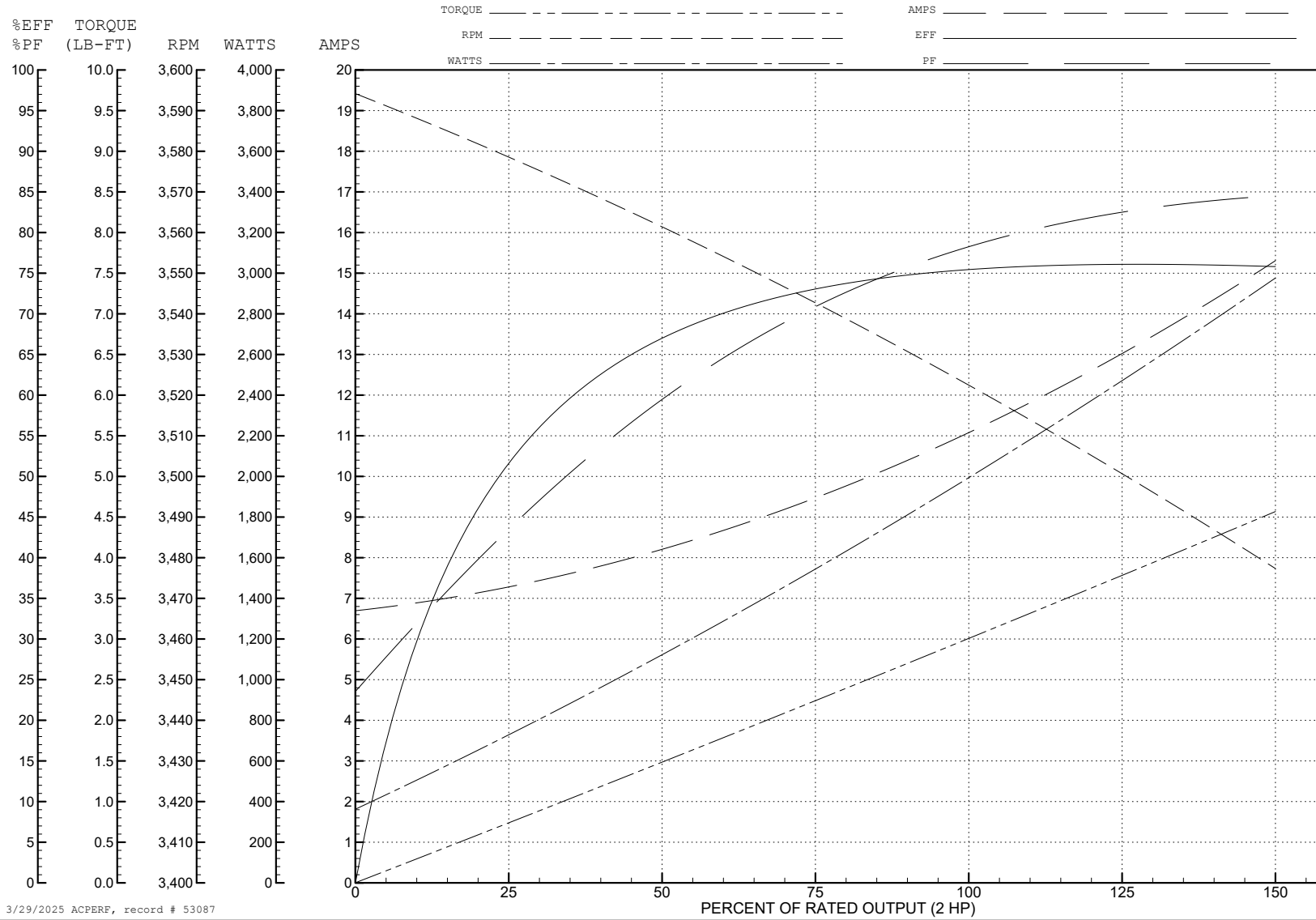
ABB Motors and Mechanical Inc.

WINDING # 35WG5184

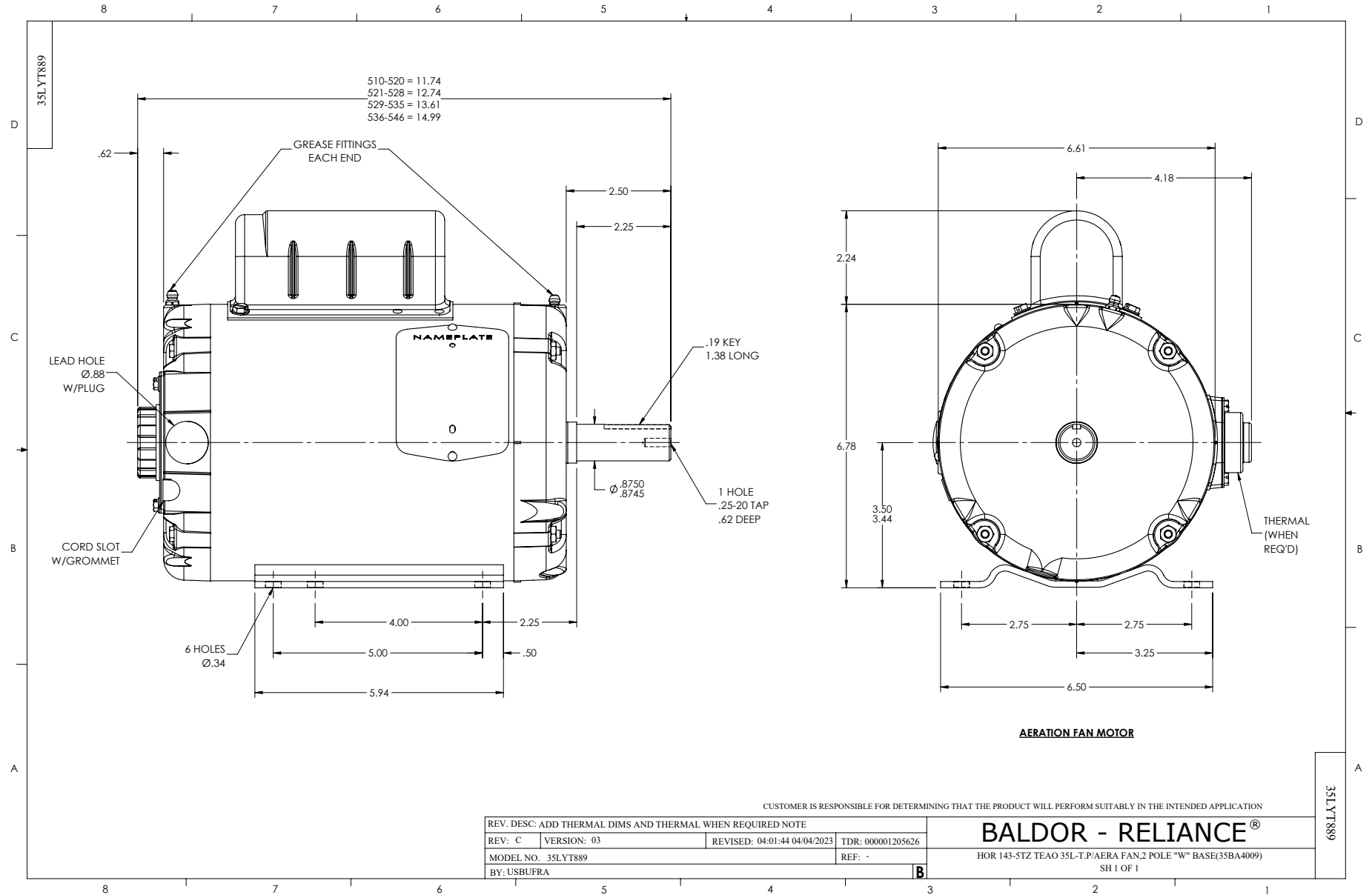
Typical performance - not guaranteed values.

2 HP 1 PH 60 HZ 3450 RPM 230 V 3535L

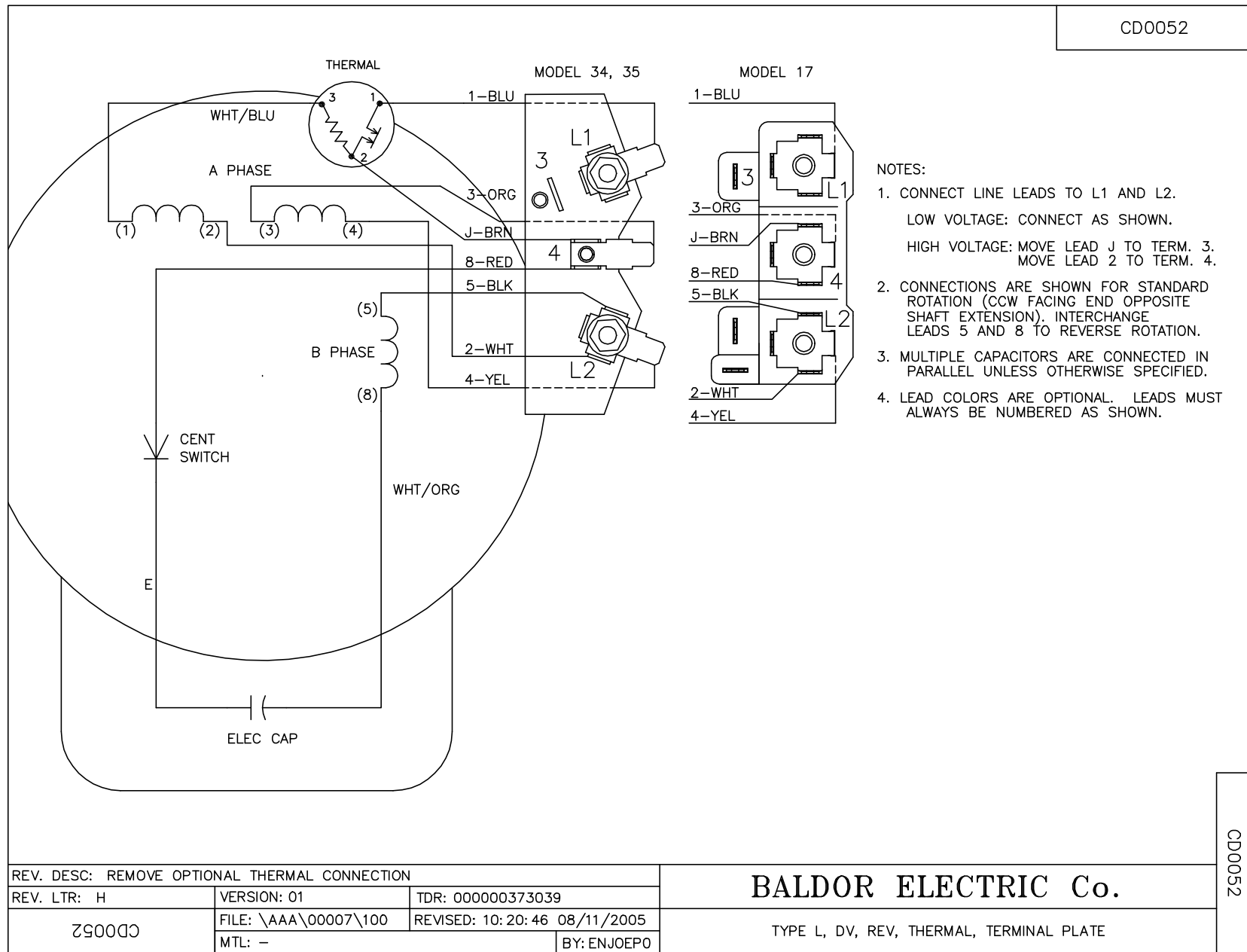
TORQUES (LB-FT): PO=9.75 PU=6.63 LR=7.22 LRA=79.3



3/29/2025 ACPERF, record # 53087



CD0052



REV. DESC: REMOVE OPTIONAL THERMAL CONNECTION		
REV. LTR: H	VERSION: 01	TDR: 000000373039
CD0052	FILE: \AAA\00007\100	REVISED: 10:20:46 08/11/2005
	MTL: -	BY: ENJOEPO

**BALDOR ELECTRIC Co.**

TYPE L, DV, REV, THERMAL, TERMINAL PLATE

CD0052