



Customer information packet

AFM3532

3HP, 3450RPM, 3PH, 60HZ, 145T, 3528M, TEAO, F1

Class - None

Division - Not Applicable

Specifications

Enclosure	TEAO
Frame	145T
Frame Material	Steel
Frequency	60.00 Hz
Haz Area Class and Group	None
Haz Area Division	Not Applicable
Motor Letter Type	Three Phase
Output @ Frequency	3.000 HP @ 60 HZ
Phase	3
Synchronous Speed @ Frequency	3600 RPM @ 60 HZ
Voltage @ Frequency	460.0 V @ 60 HZ 230.0 V @ 60 HZ 208.0 V @ 60 HZ
Agency Approvals	CSA UR
Ambient Temperature	40 °C
Auxillary Box	No Auxillary Box
Auxillary Box Lead Termination	None
Base Indicator	Rigid
Bearing Grease Type	Polyrex EM (-20F +300F)
Blower	None
Current @ Voltage	8.100 A @ 208.0 V 7.600 A @ 230.0 V 3.800 A @ 460.0 V
Design Code	B
Drip Cover	No Drip Cover
Duty Rating	CONT
Efficiency @ 100% Load	82.5 %
Electrically Isolated Bearing	Not Electrically Isolated
Feedback Device	NO FEEDBACK
Front Face Code	Terminal Panel
Front Shaft Indicator	None

Part detail

Revision	AN
Type	AC
Mech. spec.	35T908
Base	
Status	PRD/A
Elec. spec.	35WGT123
Layout	35LYT908
Eff. date	01-02-2025
CD Diagram	CD0005
Poles	02
Leads	9#18 14" minimum Y
Proprietary	False
Created date	06-22-2007

Heater Indicator	No Heater
High Voltage Full Load Amps	3.8 a
Insulation Class	B
Inverter Code	Not Inverter
KVA Code	K
Lifting Lugs	No Lifting Lugs
Locked Bearing Indicator	No Locked Bearing
Motor Lead Exit	Terminal Panel Or Lead Hole
Motor Lead Quantity/Wire Size	9 @ 18 AWG
Motor Lead Termination	Flying Leads
Motor Standards	NEMA
Motor Type	3528M
Mounting Arrangement	F1
Number of Poles	2
Overall Length	12.74 IN
Power Factor	89
Product Family	General Purpose
Pulley End Bearing Type	Ball
Pulley Face Code	Standard
Pulley Shaft Indicator	Tapped & Key
Rodent Screen	None
Service Factor	1.00
Shaft Diameter	0.875 IN
Shaft Extension Location	Pulley End
Shaft Ground Indicator	No Shaft Grounding
Shaft Rotation	Reversible
Shaft Slinger Indicator	No Slinger
Speed	3450 rpm
Speed Code	Single Speed
Starting Method	Direct on line
Thermal Device - Bearing	None
Thermal Device - Winding	Normally Closed Thermostat
Vibration Sensor Indicator	No Vibration Sensor
Winding Thermal 1	None

Winding Thermal 2

None

Nameplate

NP1279L							
CAT.NO.	AFM3532						
SPEC.	35T908T123G1						
HP	3						
VOLTS	208-230/460						
AMP	8.1-7.6/3.8						
RPM	3450						
FRAME	145T	HZ	60	PH	3		
SER.F.	1.00	CODE	K	DES	B	CL	B
NEMA-NOM-EFF	82.5	PF	89				
RATING	40C AMB-CONT						
CC							
DE	6205	ODE	6203				
ENCL	TEAO	SN					

Parts list

Part number	Description	Quantity
SA111030	SA 35T908T123G1	1.000 ea
RA102409	RA 35T908T123G1	1.000 ea
RM1001A01	GROMMET "MIDSTATES"	1.000 ea
11XW0832G06	#8-32 X 3/8, TAPTITE II, HEX WSHR SLTD	1.000 ea
SP1003A01	TERM. BOARD, MODE 35 SW X H-23655	1.000 ea
51XW0832A07	8-32 X .44, TAPTITE II, HEX WSHR SLTD SE	2.000 ea
35EP3102A02SP	FR ENDPLATE, MACH	1.000 ea
HW4500A01	1641B(ALEMITE)400 UNIV, GREASE FITT	1.000 ea
HW5100A03	WAVY WASHER (W1543-017)	1.000 ea
35EP3123F00	MASTER DE,205 BRG,.998SH,#26 DRN,GRSR	1.000 ea
HW4500A01	1641B(ALEMITE)400 UNIV, GREASE FITT	1.000 ea
XY1032A02	10-32 HEX NUT DIRECTIONAL SERRATION	4.000 ea
35CB4500SP	TERMINAL BOX LID STAMPED	1.000 ea
35GS1002	GASKET,1/16 THICK LEXIDE	1.000 ea
51XW0832A07	8-32 X .44, TAPTITE II, HEX WSHR SLTD SE	2.000 ea
HW2501D13	KEY, 3/16 SQ X 1.375	1.000 ea
HA7000A01	KEY RETAINER 7/8" DIA SHAFT	1.000 ea
85XU0407S04	4X1/4 U DRIVE PIN STAINLESS	2.000 ea
MJ1000A02	GREASE, POLYREX EM EXXON	0.050 lb
MG1025C02	WILKOFASST SG, 787.105, TAN	0.017 ga
HA3100A18	THRUBOLT 10-32 X 9.250	4.000 ea
LC0005E01	CONN.DIA./WARNING LABEL (LC0005/LB1119N)	1.000 ea
LB1161	LABEL,THERMOSTAT (ROLL LABEL)	1.000 ea
NP1279L	ALUM FARM DUTY UL CSA CC	1.000 ea
36PA1000	PKG GRP, PRINT PK1016A06	1.000 ea
PE-0000001	ZRTG PE ASSEMBLY	1.000 ea

AC Induction Motor Performance Data

Record # 20989

Typical performance - not guaranteed values

Winding: 35WGT123-R011		Type: 3528M	Enclosure: TEFC	
Nameplate Data			460 V, 60 Hz: High Voltage Connection	
Rated Output (HP)		3	Full Load Torque	4.6 LB-FT
Volts		208-230/460	Start Configuration	direct on line
Full Load Amps		8.1-7.6/3.8	Breakdown Torque	19.7 LB-FT
R.P.M.		3450	Pull-up Torque	13.1 LB-FT
Hz	60 Phase	3	Locked-rotor Torque	17.5 LB-FT
NEMA Design Code	B KVA Code	K	Starting Current	32.9 A
Service Factor (S.F.)		1	No-load Current	1.4 A
NEMA Nom. Eff.	82.5 Power Factor	89	Line-line Res. @ 25°C	5.1 Ω
Rating - Duty		40C AMB-CONT	Temp. Rise @ Rated Load	68°C

Load Characteristics 460 V, 60 Hz, 3 HP

% of Rated Load	25	50	75	100	125	150
Power Factor	55	74	83	87	88	88
Efficiency	76	83	84.3	84	82.7	80.6
Speed	3559	3525	3490	3452	3409	3358
Line amperes	1.7	2.3	3	3.8	4.7	5.7

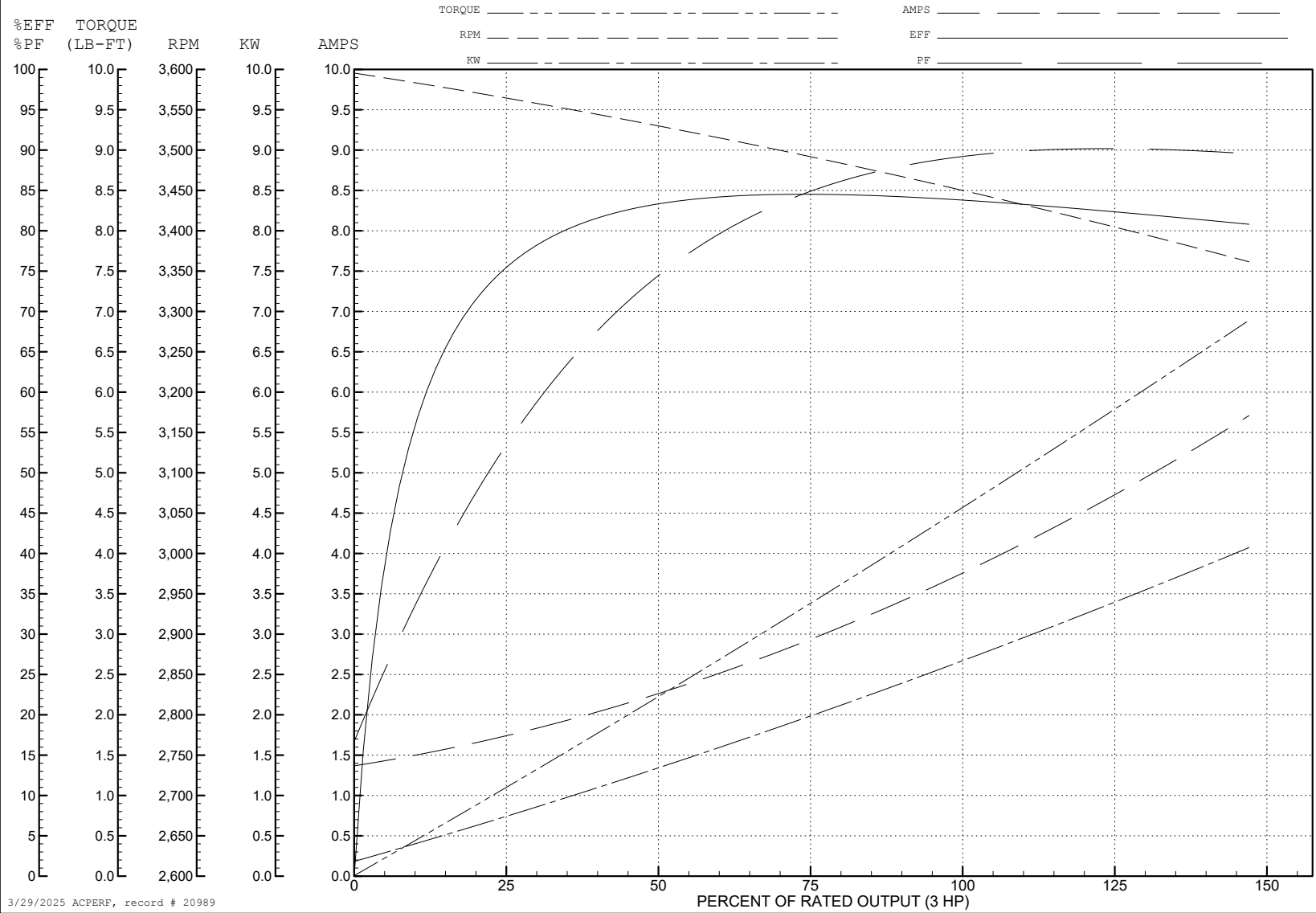
ABB Motors and Mechanical Inc.

WINDING # 35WGT123

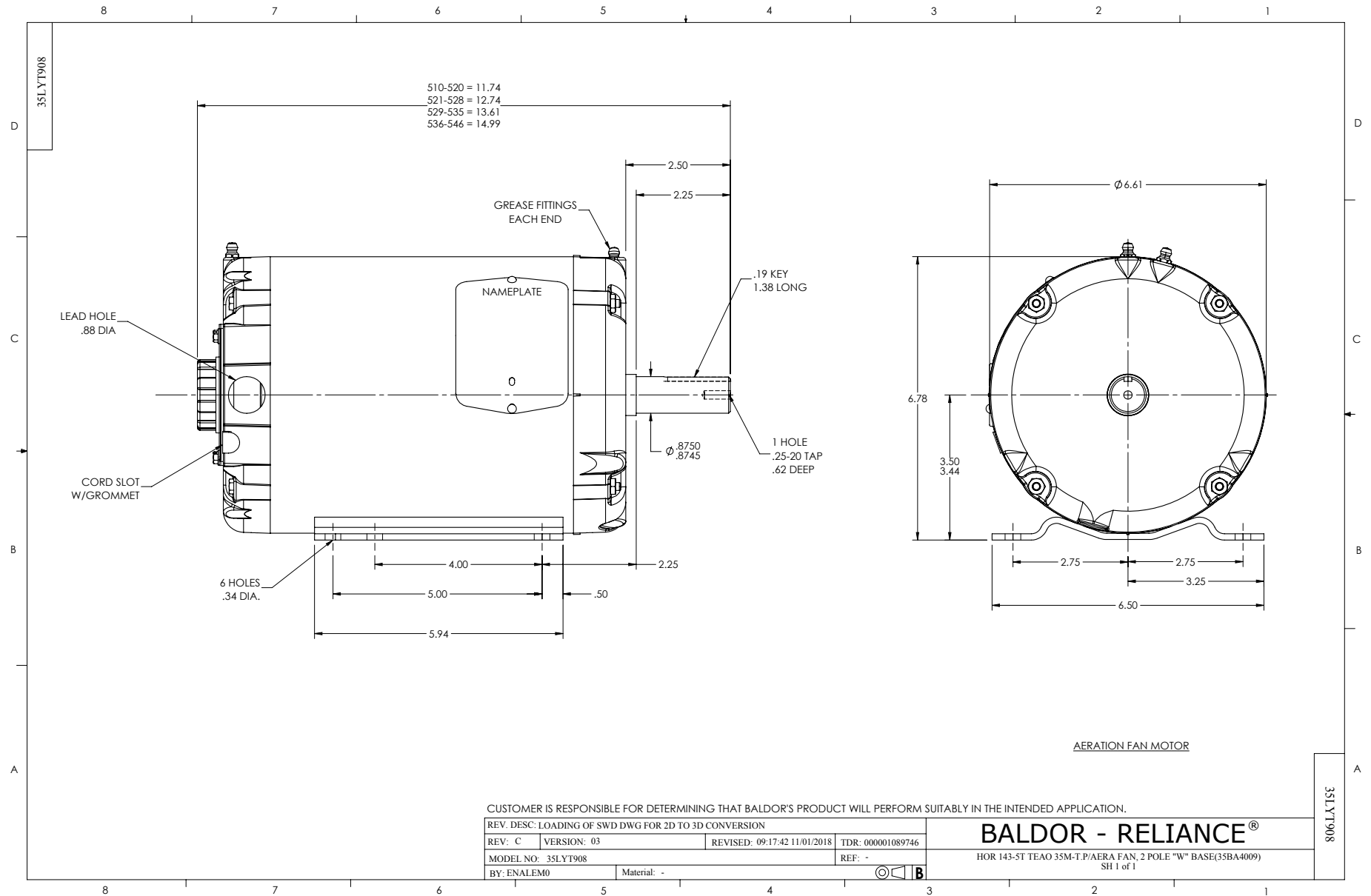
3 HP 3 PH 60 HZ 3450 RPM 460 V 3528M

Typical performance - not guaranteed values.

TORQUES (LB-FT): PO=19.7 PU=13.1 LR=17.5 LRA=32.9



3/29/2025 ACPERF, record # 20989



CD0005



LOW VOLTAGE
(2Y)



LINE

HIGH VOLTAGE
(1Y)



LINE

NOTES:

1. INTERCHANGE ANY TWO LINE LEADS TO REVERSE ROTATION.
2. OPTIONAL THERMOSTATS ARE PROVIDED WHEN SPECIFIED.
3. ACTUAL NUMBER OF INTERNAL PARALLEL CIRCUITS MAY BE A MULTIPLE OF THOSE SHOWN ABOVE.
4. LEAD COLORS ARE OPTIONAL. LEADS MUST ALWAYS BE NUMBERED AS SHOWN.

CD0005

REV. DESC: REVISE TO SHOW OPTIONAL COLORS			
REV. LTR: E	BY: JLP	REVISED: 01/19/99 10:15	TDR: 0171435
S00000		FILE: AAA00005140	MDL: -
		MTL: -	

BALDOR ELECTRIC Co.

3PH, DV, 9 LEADS