

**BALDOR • RELIANCE**

---

# Customer information packet

## ANFL3507M

.75HP, 1725RPM, 1PH, 60HZ, 48YZ, 3428LC, TEFC

Class - None

Division - Not Applicable

## Specifications

Enclosure	TEFC
Frame	48YZ
Frame Material	Steel
Frequency	60.00 Hz
Haz Area Class and Group	None
Haz Area Division	Not Applicable
Motor Letter Type	Cap Start, Cap Run
Output @ Frequency	.750 HP @ 60 HZ
Phase	1
Synchronous Speed @ Frequency	1800 RPM @ 60 HZ
Voltage @ Frequency	115.0 V @ 60 HZ 230.0 V @ 60 HZ
Agency Approvals	UR CSA
Ambient Temperature	40 °C
Auxillary Box	No Auxillary Box
Auxillary Box Lead Termination	None
Base Indicator	No Mounting
Bearing Grease Type	Polyrex EM (-20F +300F)
Blower	None
Current @ Voltage	4.100 A @ 230.0 V 5.400 A @ 208.0 V 8.200 A @ 115.0 V
Design Code	N
Drip Cover	No Drip Cover
Duty Rating	CONT
Efficiency @ 100% Load	74.0 %
Electrically Isolated Bearing	Not Electrically Isolated
Feedback Device	NO FEEDBACK
Front Face Code	Standard
Front Shaft Indicator	Multiple Flats
Heater Indicator	No Heater

## Part detail

Revision	N
Type	AC
Mech. spec.	34M899
Base	
Status	PRD/A
Elec. spec.	34WGX030
Layout	34LYM899
Eff. date	07-25-2024
CD Diagram	CD0320
Poles	04
Leads	6#18,1#16 #4TH
Proprietary	False
Created date	11-23-2016

High Voltage Full Load Amps	4.1 a
Insulation Class	B
Inverter Code	Not Inverter
KVA Code	J
Lifting Lugs	No Lifting Lugs
Locked Bearing Indicator	Locked Bearing
Motor Lead Exit	Ko Box
Motor Lead Quantity/Wire Size	6 @ 18 AWG
Motor Lead Termination	Flying Leads
Motor Standards	NEMA
Motor Type	3428LC
Mounting Arrangement	F1
Number of Poles	4
Overall Length	13.32 IN
Power Factor	80
Product Family	General Purpose
Pulley End Bearing Type	Ball
Pulley Face Code	Oil Burner Flange
Pulley Shaft Indicator	Standard
Rodent Screen	None
RoHS Status	ROHS COMPLIANT
Service Factor	1.25
Shaft Diameter	0.500 IN
Shaft Extension Location	Pulley End
Shaft Ground Indicator	No Shaft Grounding
Shaft Rotation	Reversible
Shaft Slinger Indicator	No Slinger
Speed	1725 rpm
Speed Code	Single Speed
Starting Method	Direct on line
Thermal Device - Bearing	None
Thermal Device - Winding	None
Vibration Sensor Indicator	No Vibration Sensor
Winding Thermal 1	Manual Thermal Overload

**Winding Thermal 1 Location**

**KO**

---

**Nameplate**

<b>NP1280L</b>	
<b>CAT.NO.</b>	ANFL3507M
<b>SPEC.</b>	34M899X030G1
<b>HP</b>	.75
<b>VOLTS</b>	115/230
<b>AMP</b>	8.2/4.1
<b>RPM</b>	1725
<b>FRAME</b>	48YZ <b>HZ</b> 60 <b>PH</b> 1
<b>SER.F.</b>	1.25 <b>CODE</b> J <b>DES</b> N <b>CL</b> B
<b>NEMA-NOM-EFF</b>	74 <b>PF</b> 80
<b>RATING</b>	40C AMB-CONT
<b>CC</b>	
<b>DE</b>	6203 <b>ODE</b> 6203
<b>ENCL</b>	TEFC <b>SN</b>
	SFA 9.8/4.9

## Parts list

Part number	Description	Quantity
SA330596	SA 34M899X030G1	1.000 ea
RA318577	RA 34M899X030G1	1.000 ea
OC3020F12SP	CAPACITORS 20 MFD 370 VAC	1.000 ea
TPMRJ30RB	THERMAL 1PH 0.75 MAN 120C	1.000 ea
EC1270A02SP	ELEC CAP, 270-324 MFD, 125V, 1.48D X 3.	1.000 ea
34CB3001A39P	CONDUIT BOX, MACH/PAINT	1.000 ea
NS2512A01	INSULATOR, CONDUIT BOX X	1.000 ea
34GS1013SP	GASKET, CONDUIT BOX LEXIDE	1.000 ea
51XB1016A07	10-16 X 7/16 HXWSSLD SERTYB	2.000 ea
11XW1032G06	10-32 X .38, TAPTITE II, HEX WSHR SLTD U	1.000 ea
NS2500A02	INSULATOR, MAN THER PROT	1.000 ea
RM1014A01SP	BUTYL RUB. THRM COV. (MENA)	1.000 ea
HA6001A01	THERMAL RETAINER (PLATED)	1.000 ea
51XB1214A08	12-14 X 1/2HX WS SL SR TYBX	2.000 ea
51XW0832A07	8-32 X .44, TAPTITE II, HEX WSHR SLTD SE	2.000 ea
34EP3102A167	FR ENDPLATE, UNMACHINED SWITCH BOSSES	1.000 ea
34CB3801	CAPACITOR BOX, DIE CAST	1.000 ea
34GS3002	GASKET, CAPACITOR BOX	1.000 ea
51XB1214A08	12-14 X 1/2HX WS SL SR TYBX	2.000 ea
HW5100A03	WAVY WASHER (W1543-017)	1.000 ea
34EP3500A01	ENDPLATE, MACH	1.000 ea
XY1032A02	10-32 HEX NUT DIRECTIONAL SERRATION	4.000 ea
34FN3002A01SP	EXTERNAL FAN, PLASTIC, .637/.639 HUB W/	1.000 ea
34FH4002A03SP	IEC FH NO GREASER W/.88 DIA SHAFT HOLE,	1.000 ea
51XW1032A06	10-32 X .38, TAPTITE II, HEX WSHR SLTD S	3.000 ea
36CB4516	750LIPPED CB LID - GALVANNEAL	1.000 ea
37GS1001	GASKET, CONDUIT BOX LID, .06 THICK LEXID	1.000 ea
51XW0832A07	8-32 X .44, TAPTITE II, HEX WSHR SLTD SE	4.000 ea
34GS5003A01	FOAM SLEEVE, ID = 2 1/16" X 4 3/8"	3.000 ea
MG1025C02	WILKOFASG, 787.105, TAN	0.014 ga
85XU0407S04	4X1/4 U DRIVE PIN STAINLESS	2.000 ea

WD4006A01	WIRE JOINT,T&B RB-4 OR RB-44	1.000 ea
SP5051B17	MDL 34 TORQ STAT SW,TYPE LC, STD F1 & F2	1.000 ea
SP1006A01	INSULATOR MODEL 35 SWITCH	1.000 ea
HA3100A38	THRUBOLT 10-32 X 9.375	4.000 ea
MN416A01	TAG-INSTAL-MAINT no wire (2500bx)4/22	1.000 ea
LB1624	COMBINED WARNING LABEL, ISO/ANSI PICTOGR	1.000 ea
LB1087	LABEL,MANUAL RESET (ROLL LABEL)	1.000 ea
LC0269	1PH,DV,REV,THERMAL,7 LD,L.AMP THRU HTR H	1.000 ea
NP1280L	ALUM FARM DUTY UL CC THERMAL	1.000 ea
35PA1066	PKG GRP, PRINT PK1008A06	1.000 ea
PK3083	STYROFOAM PACKING CRADLE	1.000 ea
PK3088	MICROFOAM, 8"X"8 PERF. SHEETS	1.000 ea

**AC Induction Motor Performance Data**

Record # 7187

Typical performance - not guaranteed values

<b>Winding: 34WGX030-R001</b>		<b>Type: 3428LC</b>		<b>Enclosure: TEFC</b>	
<b>Nameplate Data</b>			<b>230 V, 60 Hz: High Voltage Connection</b>		
<b>Rated Output (HP)</b>	.75		<b>Full Load Torque</b>	2.25 LB-FT	
<b>Volts</b>	115/230		<b>Start Configuration</b>	direct on line	
<b>Full Load Amps</b>	8.2/4.1		<b>Breakdown Torque</b>	5.7 LB-FT	
<b>R.P.M.</b>	1725		<b>Pull-up Torque</b>	4.7 LB-FT	
<b>Hz</b>	<b>60 Phase</b>	1	<b>Locked-rotor Torque</b>	7.5 LB-FT	
<b>NEMA Design Code</b>	<b>N KVA Code</b>	J	<b>Starting Current</b>	31 A	
<b>Service Factor (S.F.)</b>	1.25		<b>No-load Current</b>	2.7 A	
<b>NEMA Nom. Eff.</b>	<b>74 Power Factor</b>	80	<b>Line-line Res. @ 25°C</b>	3.11 Ω A Ph 1.73 Ω B Ph	
<b>Rating - Duty</b>	40C AMB-CONT		<b>Temp. Rise @ Rated Load</b>	62°C	
<b>S.F. Amps</b>	9.8/4.9		<b>Temp. Rise @ S.F. Load</b>	81°C	

**Load Characteristics 230 V, 60 Hz, 0.75 HP**

<b>% of Rated Load</b>	<b>25</b>	<b>50</b>	<b>75</b>	<b>100</b>	<b>125</b>	<b>150</b>	<b>S.F.</b>
<b>Power Factor</b>	43	61	72	80	85	87	0
<b>Efficiency</b>	53.6	67.7	73	73.9	93.2	71.4	0
<b>Speed</b>	1784	1770	1755	1739	1717	1694	0
<b>Line amperes</b>	2.7	3	3.5	4.1	4.9	5.8	4.9



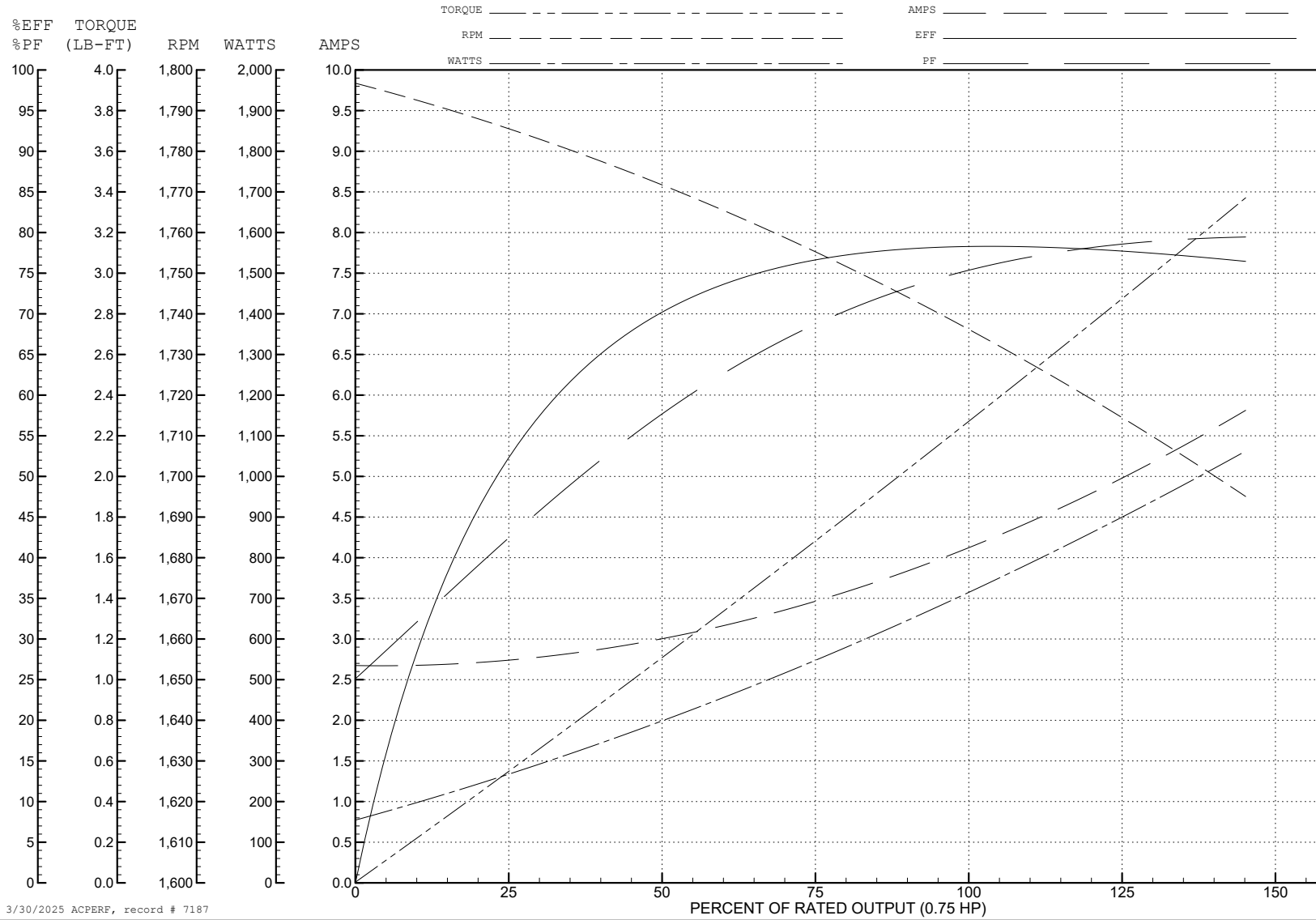
ABB Motors and Mechanical Inc.

WINDING # 34WGX030

0.75 HP 1 PH 60 HZ 1725 RPM 230 V 3428LC

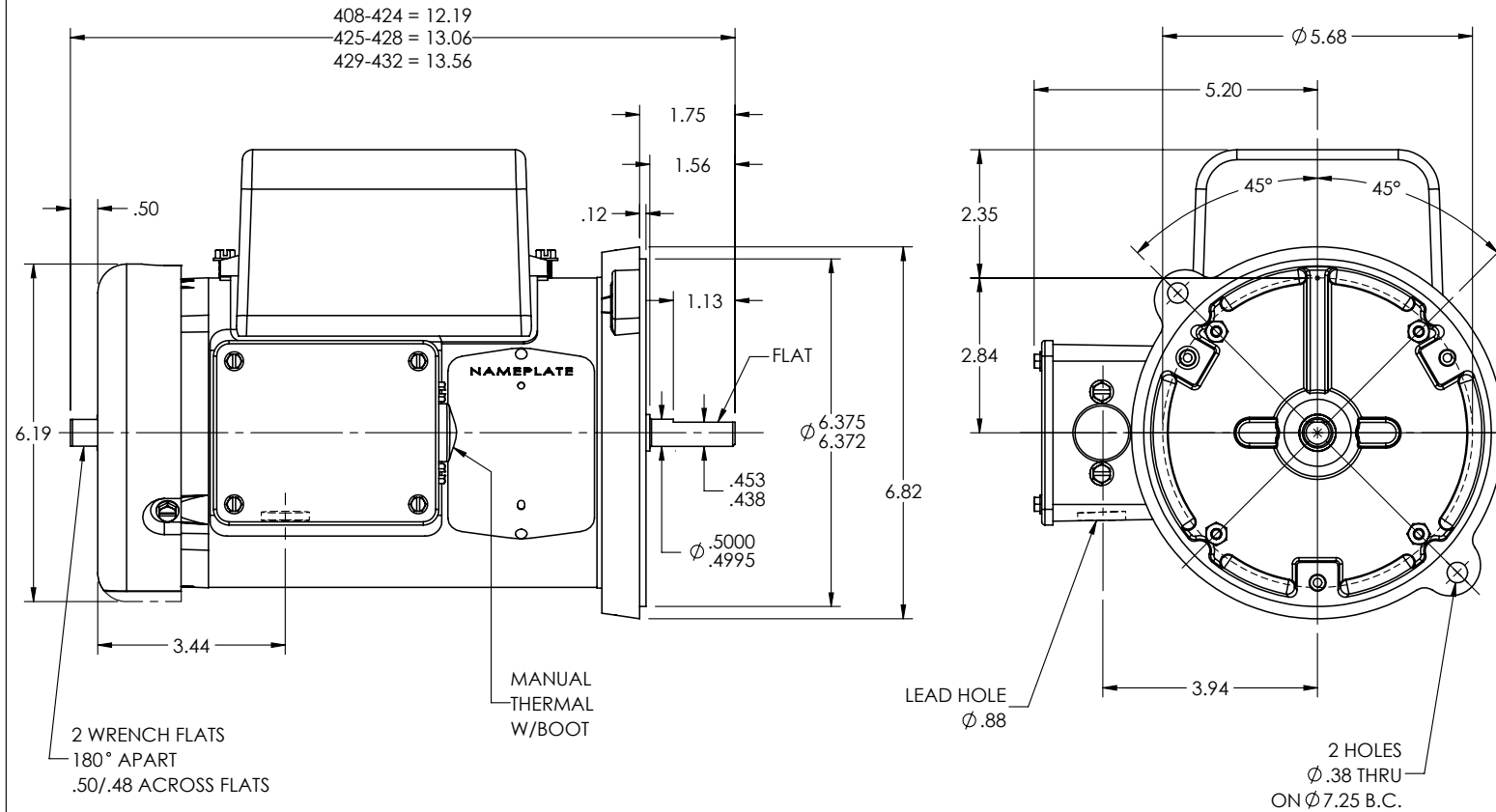
Typical performance - not guaranteed values.

TORQUES (LB-FT): PO=5.7 PU=4.7 LR=7.5 LRA=31



3/30/2025 ACPERF, record # 7187

34LYM899



CUSTOMER IS RESPONSIBLE FOR DETERMINING THAT THE PRODUCT WILL PERFORM SUITABLY IN THE INTENDED APPLICATION

REV. DESC: UPDATE SHAFT FLAT DIM FROM 1.31 TO 1.13

REV: B	VERSION: 02	REVISED: 10:21:24 08/30/2023	TDR: 000001215627
--------	-------------	------------------------------	-------------------

34LYM899

MODEL NO. 34LYM899  
 BY: ENJEFD0

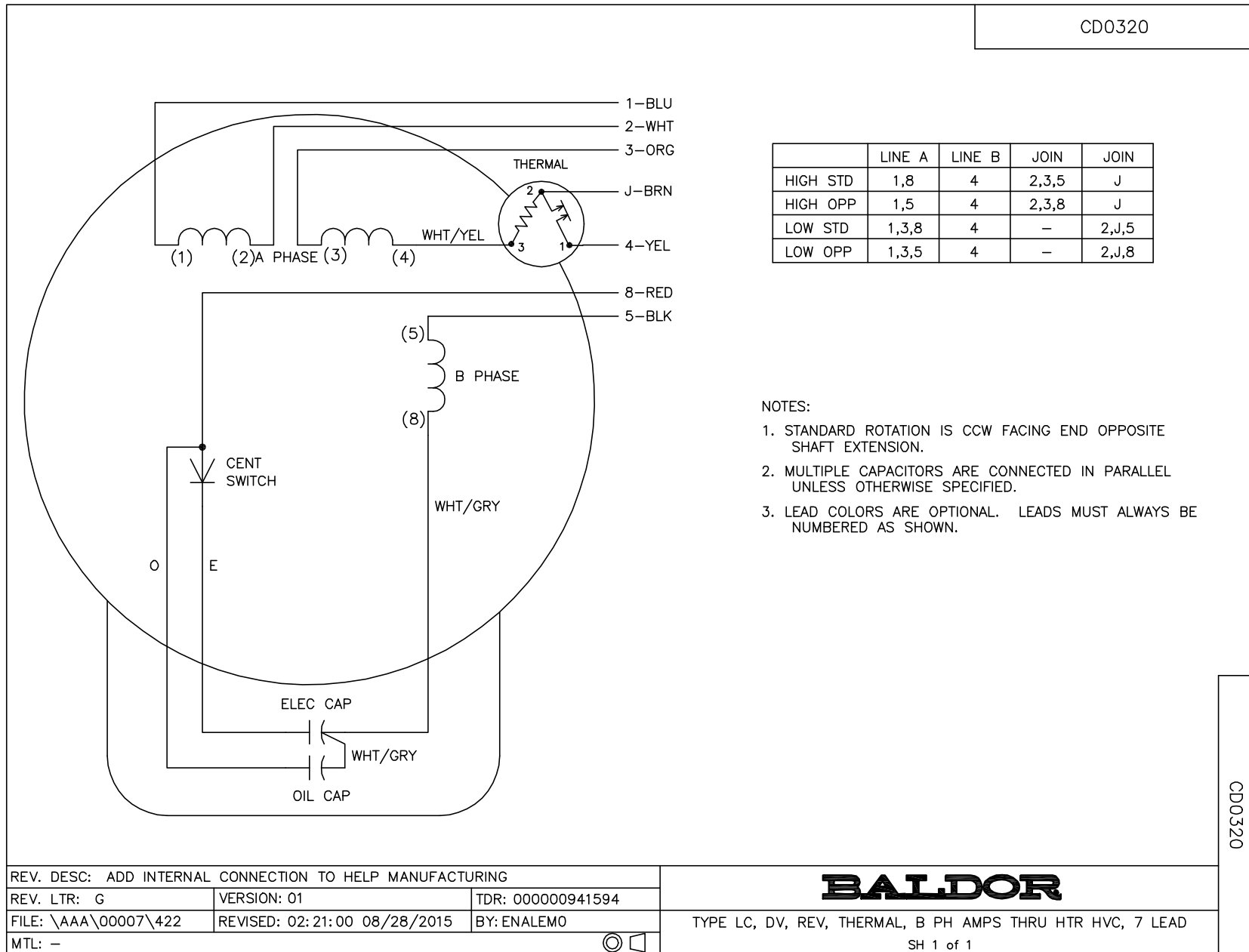
REF: -

**BALDOR - RELIANCE®**

VERT 34L 48YZ TEFC DBL SH,MTO IN KOBX,OVRSPD GUARD,V=1.75

34LYM899

CD0320



	LINE A	LINE B	JOIN	JOIN
HIGH STD	1,8	4	2,3,5	J
HIGH OPP	1,5	4	2,3,8	J
LOW STD	1,3,8	4	-	2,J,5
LOW OPP	1,3,5	4	-	2,J,8

**NOTES:**

1. STANDARD ROTATION IS CCW FACING END OPPOSITE SHAFT EXTENSION.
2. MULTIPLE CAPACITORS ARE CONNECTED IN PARALLEL UNLESS OTHERWISE SPECIFIED.
3. LEAD COLORS ARE OPTIONAL. LEADS MUST ALWAYS BE NUMBERED AS SHOWN.

CD0320

REV. DESC: ADD INTERNAL CONNECTION TO HELP MANUFACTURING		
REV. LTR: G	VERSION: 01	TDR: 00000941594
FILE: \AAA\00007\422	REVISED: 02: 21: 00 08/28/2015	BY: ENALEMO
MTL: -		© □

**BALDOR**

TYPE LC, DV, REV, THERMAL, B PH AMPS THRU HTR HVC, 7 LEAD  
SH 1 of 1