



Customer information packet

AOM25904T

5HP, 870RPM, 3PH, 60HZ, 254T, 3936M, TEAO, F1

Class -

Division - Not Applicable

Specifications

Enclosure	TEAO
Frame	254T
Frame Material	Steel
Frequency	60.00 Hz
Haz Area Division	Not Applicable
Motor Letter Type	Three Phase
Output @ Frequency	5.000 HP @ 60 HZ
Phase	3
Synchronous Speed @ Frequency	900 RPM @ 60 HZ
Voltage @ Frequency	460.0 V @ 60 HZ 230.0 V @ 60 HZ
Agency Approvals	CSA UR
Ambient Temperature	40 °C
Auxillary Box	No Auxillary Box
Auxillary Box Lead Termination	None
Base Indicator	Rigid
Bearing Grease Type	Polyrex EM (-20F +300F)
Blower	None
Current @ Voltage	18.400 A @ 230.0 V 18.600 A @ 208.0 V 9.200 A @ 460.0 V
Design Code	A
Drip Cover	No Drip Cover
Duty Rating	CONT
Efficiency @ 100% Load	84.0 %
Electrically Isolated Bearing	Not Electrically Isolated
Feedback Device	NO FEEDBACK
Front Face Code	Standard
Front Shaft Indicator	None
Heater Indicator	No Heater
High Voltage Full Load Amps	9.2 a

Part detail

Revision	AJ
Type	AC
Mech. spec.	39J95
Base	
Status	PRD/A
Elec. spec.	39WGZ042
Layout	39LYJ095
Eff. date	04-09-2024
CD Diagram	CD0005
Poles	08
Leads	9#12 36" LG Y
Proprietary	False
Created date	01-01-0001

Insulation Class	F
Inverter Code	Not Inverter
KVA Code	H
Lifting Lugs	Standard Lifting Lugs
Locked Bearing Indicator	Locked Bearing
Motor Lead Exit	Ko Box
Motor Lead Quantity/Wire Size	9 @ 12 AWG
Motor Lead Termination	Flying Leads
Motor Standards	NEMA
Motor Type	3936M
Mounting Arrangement	F1
Number of Poles	8
Overall Length	19.63 IN
Power Factor	60
Product Family	General Purpose
Pulley End Bearing Type	Ball
Pulley Face Code	Standard
Pulley Shaft Indicator	Standard
Rodent Screen	None
Service Factor	1.15
Shaft Extension Location	Pulley End
Shaft Ground Indicator	No Shaft Grounding
Shaft Rotation	Reversible
Shaft Slinger Indicator	No Slinger
Speed	885 rpm
Speed Code	Single Speed
Starting Method	Direct on line
Thermal Device - Bearing	None
Thermal Device - Winding	None
Vibration Sensor Indicator	No Vibration Sensor

Nameplate

NP1256L									
CAT.NO.	AOM25904T								
SPEC.	39J95Z42								
HP	5 AIR OVER								
VOLTS	230/460								
AMP	18.4/9.2								
RPM	885								
FRAME	254T		HZ	60		PH	3		
SER.F.	1.15	CODE	H	DES	A	CLASS	F		
NEMA-NOM-EFF	84	PF	60						
RATING	40C AMB-CONT								
CC									
DE	6309	ODE	6208						
ENCL	TEAO	SN							
	900 FPM AT 250 CFM								

Parts list

Part number	Description	Quantity
SA000239	SA 39J95Z42	1.000 ea
RA000239	RA 39J95Z42	1.000 ea
HA6016	ADAPTER, CAST CONDUIT BOX	1.000 ea
09GS1000	GASKET-CONDUIT BOX, 1/16 THICK LEXIDE	1.000 ea
09CB3003	CB W/1.75" DIA LD HL - 37, 39, 307 & 309	1.000 ea
09GS1000	GASKET-CONDUIT BOX, 1/16 THICK LEXIDE	1.000 ea
WD1000B16	T&B CX70TN OR L70P TERMINAL LUG	1.000 ea
59XW2520G07	.25-20X.44,HEX SER WSHR,TAPTITE 2,GREEN	1.000 ea
39EP1100B01	STD FRONT EP, TENV	1.000 ea
HA4051A00	PLASTIC CAP FOR GREASE FITTING	1.000 ea
HW5100A08	W3118-035 WVY WSHR (WB)	1.000 ea
39EP1101A02	STD PU EP-ENCL-TEFC	1.000 ea
HA4051A00	PLASTIC CAP FOR GREASE FITTING	1.000 ea
10XN2520K28	1/4-20 X 1.75" HX HD SCRWGRADE 5, ZINC P	4.000 ea
HW1001A25	LOCKWASHER 1/4, ZINC PLT .493 OD, .255 I	4.000 ea
HA3154A01	STUD, 3/8-16 X 14.375	4.000 ea
XY3816A12	3/8-16 FINISHED NUT W/SERRATIONS	8.000 ea
09CB3501SP	CONDUIT BOX LID FOR 09CB3001 & 09CB3002	1.000 ea
09GS1013SP	GS FOR 09CB3501, 12CB1500 & 12CB1503 LID	1.000 ea
51XW2520A12	.25-20 X .75, TAPTITE II, HEX WSHR SLTD	2.000 ea
51XW2520A12	.25-20 X .75, TAPTITE II, HEX WSHR SLTD	2.000 ea
HW2501G25	KEY, 3/8 SQ X 2.875	1.000 ea
LB1624	COMBINED WARNING LABEL, ISO/ANSI PICTOGR	1.000 ea
HW4500A03	GREASE FITTING, .125 NPT 1610(ALEMITE) 8	1.000 ea
HW4500A17	317400 ALEMITE GREASE RELIEF	1.000 ea
MJ1000A02	GREASE, POLYREX EM EXXON	0.030 lb
HW4500A03	GREASE FITTING, .125 NPT 1610(ALEMITE) 8	1.000 ea
HW4500A17	317400 ALEMITE GREASE RELIEF	1.000 ea
MG1050G01	CELEROL MEDIUM CHARCOAL METALLIC GRAY	0.050 ga
85XU0407S04	4X1/4 U DRIVE PIN STAINLESS	2.000 ea
LC0005	CONN.DIA.,TY M,9-LD,DUAL VOLT,REVERSING	1.000 ea

NP1256L	ALUM UL CC INDUSTRIAL MOTOR A60	1.000 ea
39PA1000	PACKAGING GROUP 39 PRINT	1.000 ea
MN416A01	TAG-INSTAL-MAINT no wire (2500bx)4/22	1.000 ea
LD7020D09	LEAD SET, 12AWG, 9 LEAD, 20" LONG LEADS	1.000 ea

AC Induction Motor Performance Data

Record # 13156

Typical performance - not guaranteed values

Winding: 39WGZ042-R001		Type: 3936M		Enclosure: TEAO	
Nameplate Data			460 V, 60 Hz: High Voltage Connection		
Rated Output (HP)	5 AIR OVER		Full Load Torque	29.96 LB-FT	
Volts	230/460		Start Configuration	direct on line	
Full Load Amps	18.4/9.2		Breakdown Torque	68.97 LB-FT	
R.P.M.	885		Pull-up Torque	42.46 LB-FT	
Hz	60	Phase	3	Locked-rotor Torque	62.1 LB-FT
NEMA Design Code	A	KVA Code	H	Starting Current	42.25 A
Service Factor (S.F.)	1.15		No-load Current	5.53 A	
NEMA Nom. Eff.	84	Power Factor	60	Line-line Res. @ 25°C	2.02 Ω
Rating - Duty	40C AMB-CONT		Temp. Rise @ Rated Load	63°C	
S.F. Amps			Temp. Rise @ S.F. Load	77°C	
			Locked-rotor Power Factor	31.5	
			Rotor inertia	2.89 LB-FT ²	

Load Characteristics 460 V, 60 Hz, 5 HP

% of Rated Load	25	50	75	100	125	150	S.F.
Power Factor	28	42	54	60	63	67	62
Efficiency	73	82.9	84.5	85.3	83.9	82.3	84.5
Speed	896	893	890	886	880	877	882
Line amperes	5.93	6.83	7.83	9.19	11.05	12.78	10.3

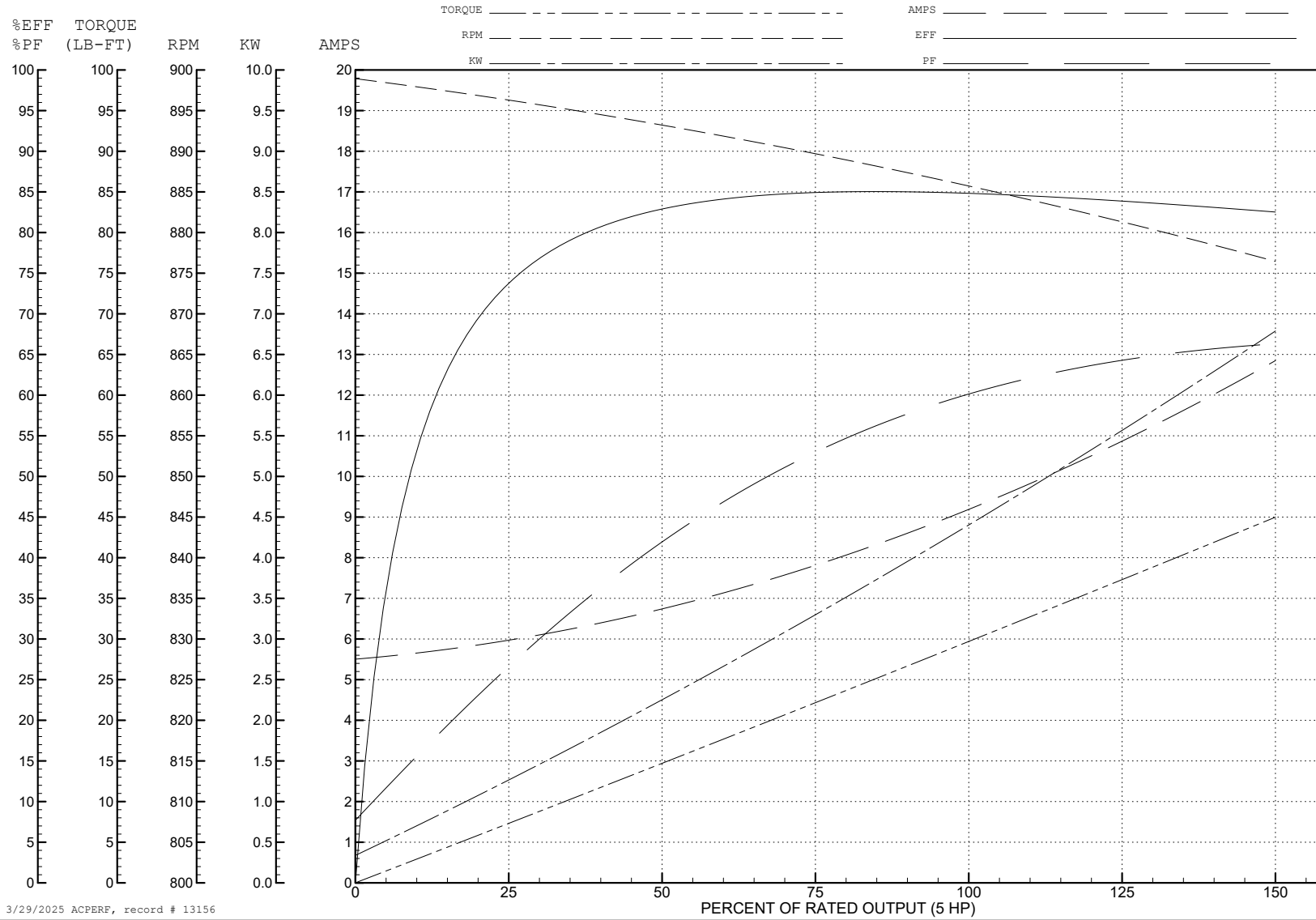
ABB Motors and Mechanical Inc.

WINDING # 39WGZ042

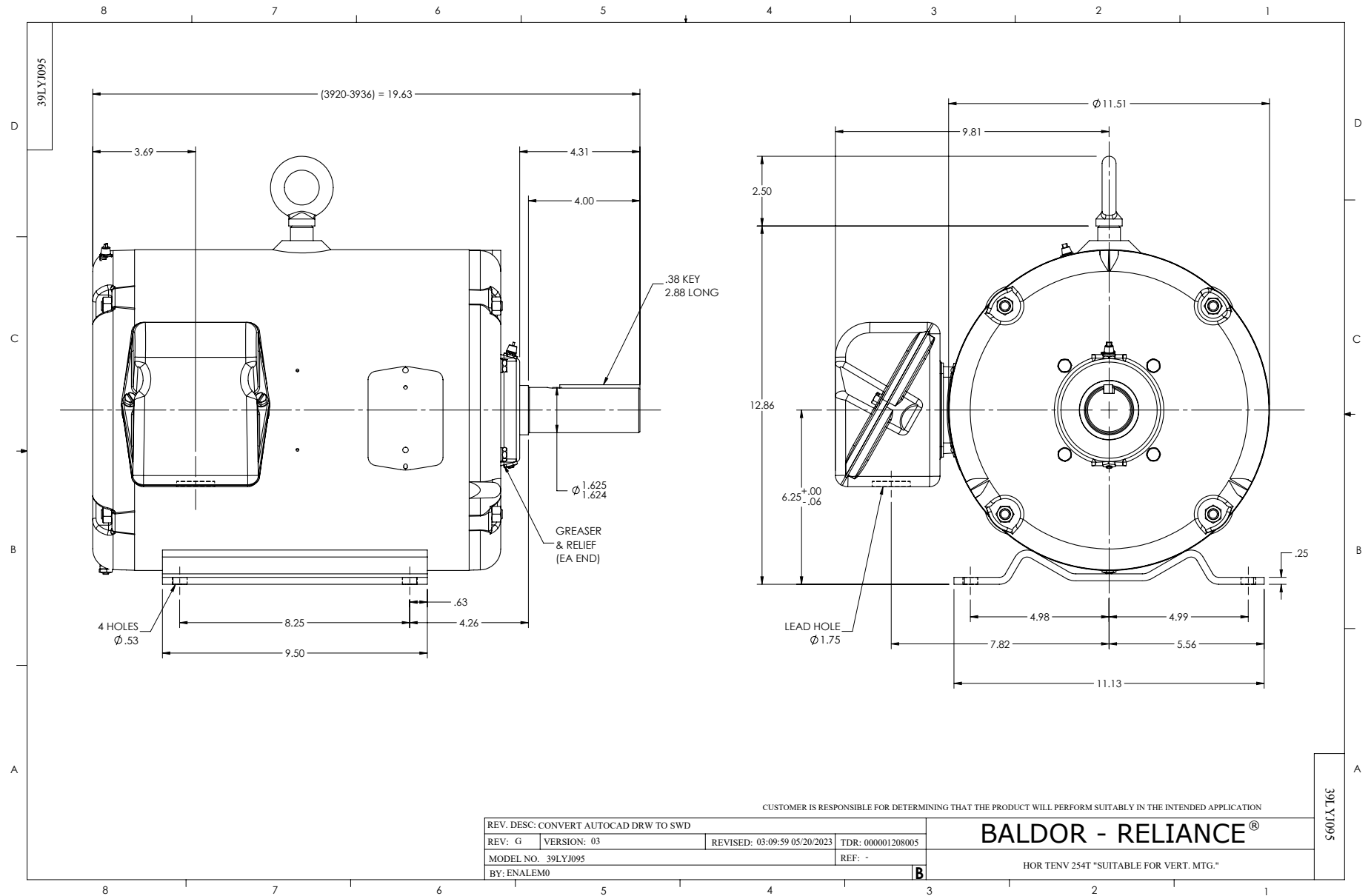
Typical performance - not guaranteed values.

5 HP 3 PH 60 HZ 885 RPM 460 V 3936M

TORQUES (LB-FT): PO=68.97 PU=42.46 LR=62.1 LRA=42.25



3/29/2025 ACPERF, record # 13156



CD0005



LOW VOLTAGE
(2Y)



LINE

HIGH VOLTAGE
(1Y)



LINE

NOTES:

1. INTERCHANGE ANY TWO LINE LEADS TO REVERSE ROTATION.
2. OPTIONAL THERMOSTATS ARE PROVIDED WHEN SPECIFIED.
3. ACTUAL NUMBER OF INTERNAL PARALLEL CIRCUITS MAY BE A MULTIPLE OF THOSE SHOWN ABOVE.
4. LEAD COLORS ARE OPTIONAL. LEADS MUST ALWAYS BE NUMBERED AS SHOWN.

CD0005

REV. DESC: REVISE TO SHOW OPTIONAL COLORS			
REV. LTR: E	BY: JLP	REVISED: 01/19/99 10:15	TDR: 0171435
S00000		FILE: AAA00005140	MDL: -
		MTL: -	

BALDOR ELECTRIC Co.

3PH, DV, 9 LEADS