

BALDOR • RELIANCE

Customer information packet

AOM3617T

1HP, 860RPM, 3PH, 60HZ, 182T, 3622M, TEAO, F1, N

Class - None

Division - Not Applicable

Specifications

Enclosure	TEAO
Frame	182T
Frame Material	Steel
Frequency	60.00 Hz
Haz Area Class and Group	None
Haz Area Division	Not Applicable
Motor Letter Type	Three Phase
Output @ Frequency	1.000 HP @ 60 HZ
Phase	3
Synchronous Speed @ Frequency	900 RPM @ 60 HZ
Voltage @ Frequency	460.0 V @ 60 HZ 230.0 V @ 60 HZ 208.0 V @ 60 HZ
Agency Approvals	CSA UR
Ambient Temperature	40 °C
Auxillary Box	No Auxillary Box
Auxillary Box Lead Termination	None
Base Indicator	Rigid
Bearing Grease Type	Polyrex EM (-20F +300F)
Blower	None
Current @ Voltage	4.400 A @ 230.0 V 4.200 A @ 208.0 V 2.200 A @ 460.0 V
Design Code	B
Drip Cover	No Drip Cover
Duty Rating	CONT
Efficiency @ 100% Load	74.0 %
Electrically Isolated Bearing	Not Electrically Isolated
Feedback Device	NO FEEDBACK
Front Face Code	Standard
Front Shaft Indicator	None

Part detail

Revision	J
Type	AC
Mech. spec.	36G256
Base	
Status	PRD/A
Elec. spec.	36WGT755
Layout	36LYG256
Eff. date	12-30-2024
CD Diagram	CD0005
Poles	08
Leads	9#16 36" LONG Y
Proprietary	False
Created date	04-02-2013

Heater Indicator	No Heater
High Voltage Full Load Amps	2.2 a
Insulation Class	F
Inverter Code	Not Inverter
KVA Code	J
Lifting Lugs	No Lifting Lugs
Locked Bearing Indicator	Locked Bearing
Motor Lead Exit	Ko Box
Motor Lead Quantity/Wire Size	9 @ 16 AWG
Motor Lead Termination	Flying Leads
Motor Standards	NEMA
Motor Type	3622M
Mounting Arrangement	F1
Number of Poles	8
Overall Length	13.62 IN
Power Factor	56
Product Family	General Purpose
Pulley End Bearing Type	Ball
Pulley Face Code	Standard
Pulley Shaft Indicator	Standard
Rodent Screen	None
RoHS Status	ROHS COMPLIANT
Service Factor	1.00
Shaft Diameter	1.125 IN
Shaft Extension Location	Pulley End
Shaft Ground Indicator	No Shaft Grounding
Shaft Rotation	Reversible
Shaft Slinger Indicator	No Slinger
Speed	860 rpm
Speed Code	Single Speed
Starting Method	Direct on line
Thermal Device - Bearing	None
Thermal Device - Winding	None
Vibration Sensor Indicator	No Vibration Sensor

Winding Thermal 1

None

Winding Thermal 2

None

Nameplate

NP1256L									
CAT.NO.	AOM3617T								
SPEC.	36G256T755H1								
HP	1 AIR OVER								
VOLTS	208-230/460								
AMP	4.2-4.4/2.2								
RPM	860								
FRAME	182T		HZ	60		PH	3		
SER.F.	1.00	CODE	J	DES	B	CLASS	F		
NEMA-NOM-EFF	74	PF	56						
RATING	40C AMB-CONT								
CC									
DE	6206	ODE	6205						
ENCL	TEAO	SN							
	825 FPM AT 100 CFM								

Parts list

Part number	Description	Quantity
SA261071	SA 36G256T755H1	1.000 ea
RA247811	RA 36G256T755H1	1.000 ea
36CB3004	36 CB CASTING W/1.09 DIA LEAD HOLE @ 6:0	1.000 ea
36GS1000SP	GASKET-CONDUIT BOX, .06 THICK #SV-330 LE	1.000 ea
51XB1016A08	10-16X 1/2HXWSSLD SERTYB	2.000 ea
11XW1032G06	10-32 X .38, TAPTITE II, HEX WSHR SLTD U	1.000 ea
HW3001B01	BRASS CUP WASHER, FOR #10 SCREW	1.000 ea
36EP3104B15	FREP TENV 36 205 BRG W/GRSR(RAISED PADS)	1.000 ea
HW4500A01	1641B(ALEMITE)400 UNIV, GREASE FITT	1.000 ea
HW5100A05	WVY WSHR F/205 & 304 BRGS	1.000 ea
36EP3100A15	ENDPLATE, MACH	1.000 ea
HW4500A01	1641B(ALEMITE)400 UNIV, GREASE FITT	1.000 ea
10XN2520A20	1/4-20X 1 1/4 HEX HD X	2.000 ea
HW1001A25	LOCKWASHER 1/4, ZINC PLT .493 OD, .255 I	2.000 ea
XY2520A12	1/4-20 HEX NUT, DIRECTIONAL SERRATIONS	4.000 ea
36CB4516	750LIPPED CB LID - GALVANNEAL	1.000 ea
37GS1001	GASKET, CONDUIT BOX LID, .06 THICK LEXID	1.000 ea
51XW0832A07	8-32 X .44, TAPTITE II, HEX WSHR SLTD SE	4.000 ea
HW2501E16	KEY, 1/4 SQ X 1.750	1.000 ea
HA7000A02	KEY RETAINER RING, 1 1/8 DIA, 1 3/8 DIA	1.000 ea
85XU0407S04	4X1/4 U DRIVE PIN STAINLESS	2.000 ea
MJ1000A02	GREASE, POLYREX EM EXXON	0.050 lb
MG1050G01	CELEROL MEDIUM CHARCOAL METALLIC GRAY	0.022 ga
HA3101A23	THRUBOLT 1/4-20 X 9.625 DEMBY	4.000 ea
LC0005E01	CONN.DIA./WARNING LABEL (LC0005/LB1119N)	1.000 ea
NP1256L	ALUM UL CC INDUSTRIAL MOTOR A60	1.000 ea
36PA1000	PKG GRP, PRINT PK1016A06	1.000 ea
MN416A01	TAG-INSTAL-MAINT no wire (2500bx)4/22	1.000 ea
FE-0000001	ZRTG FE ASSEMBLY	1.000 ea

Accessories

Part number	Description	Multiplier
36-3301	C FACE KIT	A8
36EP1304A62SP	FLANGE MTD ENDPLATE 182-4TD -ENCL (LESS	A8

AC Induction Motor Performance Data

Record # 61453

Typical performance - not guaranteed values

Winding: 36WGT755-R010		Type: 3622M		Enclosure: TEAO	
Nameplate Data			460 V, 60 Hz: High Voltage Connection		
Rated Output (HP)	1 AIR OVER	Full Load Torque	6.12 LB-FT		
Volts	208-230/460	Start Configuration	direct on line		
Full Load Amps	4.2-4.4/2.2	Breakdown Torque	17.24 LB-FT		
R.P.M.	860	Pull-up Torque	10.78 LB-FT		
Hz	60 Phase	3	Locked-rotor Torque	11.95 LB-FT	
NEMA Design Code	B KVA Code	J	Starting Current	8.89 A	
Service Factor (S.F.)		1	No-load Current	1.65 A	
NEMA Nom. Eff.	74 Power Factor	56	Line-line Res. @ 25°C	18.8 Ω	
Rating - Duty	40C AMB-CONT		Temp. Rise @ Rated Load	62°C	
			Locked-rotor Power Factor	50.8	
			Rotor inertia	0.206 LB-FT ²	

Load Characteristics 460 V, 60 Hz, 1 HP

% of Rated Load	25	50	75	100	125	150
Power Factor	25	38	50	59	66	71
Efficiency	55.4	68.7	72.9	73.9	73	70.5
Speed	890	879	868	857	840	821
Line amperes	1.66	1.75	1.91	2.14	2.43	2.79

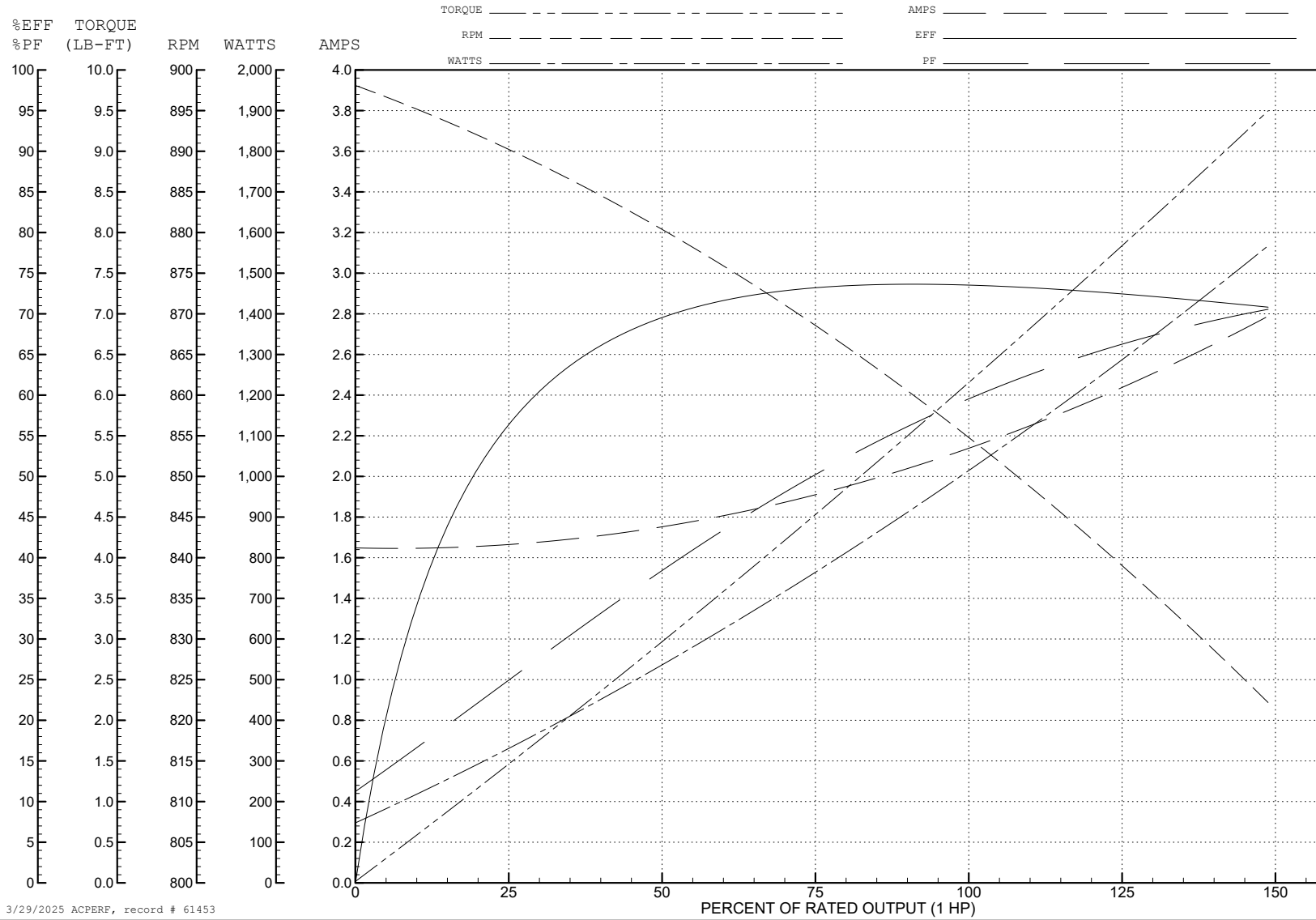
ABB Motors and Mechanical Inc.

WINDING # 36WGT755

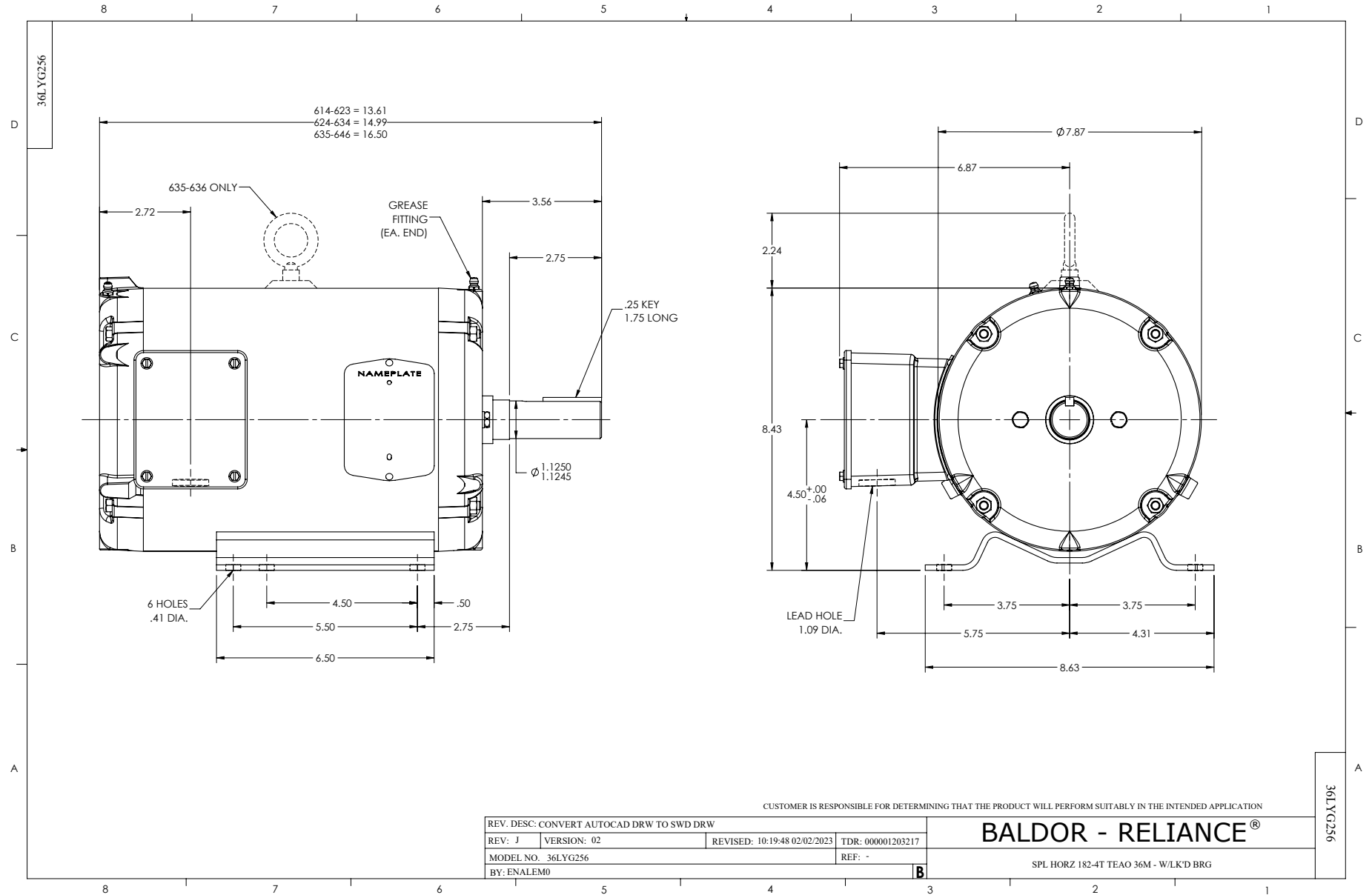
Typical performance - not guaranteed values.

1 HP 3 PH 60 HZ 860 RPM 460 V 3622M

TORQUES (LB-FT): PO=17.24 PU=10.78 LR=11.95 LRA=8.89



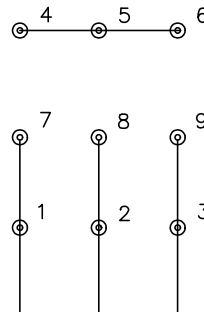
3/29/2025 ACPERF, record # 61453



CD0005

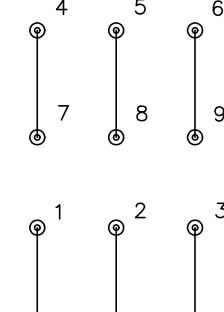


LOW VOLTAGE
(2Y)



LINE

HIGH VOLTAGE
(1Y)



LINE

NOTES:

1. INTERCHANGE ANY TWO LINE LEADS TO REVERSE ROTATION.
2. OPTIONAL THERMOSTATS ARE PROVIDED WHEN SPECIFIED.
3. ACTUAL NUMBER OF INTERNAL PARALLEL CIRCUITS MAY BE A MULTIPLE OF THOSE SHOWN ABOVE.
4. LEAD COLORS ARE OPTIONAL. LEADS MUST ALWAYS BE NUMBERED AS SHOWN.

REV. DESC: REVISE TO SHOW OPTIONAL COLORS			
REV. LTR: E	BY: JLP	REVISED: 01/19/99 10:15	TDR: 0171435
S00000		FILE: AAA00005140	MDL: -
		MTL: -	

BALDOR ELECTRIC Co.

3PH, DV, 9 LEADS

CD0005