

BALDOR • RELIANCE

Customer information packet

CDPWD3320

.33HP, 1750RPM, DC, 56C, 3327P, TENV, F1

Specifications

Armature Voltage	90 V
Base Speed	1750 rpm
Enclosure	TENV
Frame	56C
Frame Material	Steel
Output Power	0.330 HP
Agency Approvals	CE CSA UR
Ambient Temperature	40 °C
Armature Current	3.2 a
Armature Inertia	10.535 lb-ft ²
Base Indicator	Rigid
Bearing Grease Type	Polyrex EM (-20F +300F)
Drip Cover	No Drip Cover
Duty Rating	CONT
Feedback Device	NO FEEDBACK
Heater Indicator	No Heater
Lifting Lugs	No Lifting Lugs
Motor Lead Exit	Ko Box
Motor Lead Quantity/Wire Size	2 @ 18 AWG, A
Motor Lead Termination	Flying Leads
Motor Standards	NEMA
Mounting Arrangement	F1
Overall Length	13.19 IN
Product Family	Wash Down
Pulley End Bearing Type	Sealed Bearing
Service Factor	1.00
Shaft Diameter	0.625 IN
Shaft Extension Location	Pulley End
Shaft Ground Indicator	No Shaft Grounding
Shaft Rotation	Reversible

Part detail

Revision	AG
Type	DC
Mech. spec.	33-2142
Base	
Status	PRD/A
Elec. spec.	33WGZ102
Layout	33LY2142
Eff. date	08-20-2024
CD Diagram	CD0194
Poles	00
Leads	2#18 A Y
Proprietary	False
Created date	01-01-0001

Shaft Slinger Indicator

Shaft Slinger

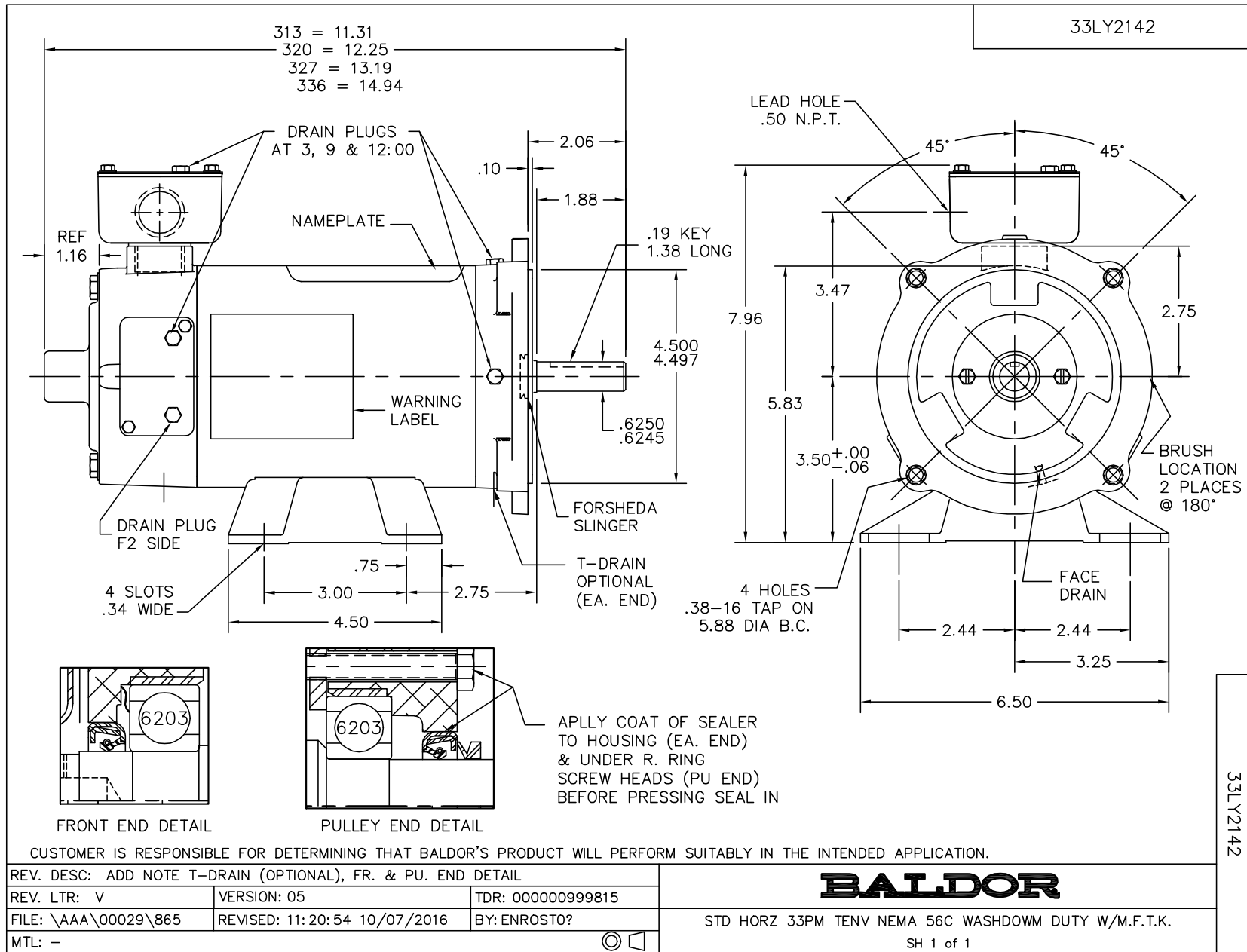
Nameplate

NP1509			
CAT.NO.	CDPWD3320		
SPEC.	33-2142Z102		
HP	.33	ENCL	TENV
RPM	1750 1/MIN		
FRAME	56C	TYPE	3327P
ARM V	90	ARM A	3.2
FLD V		FLD A	
INSUL	F	AMB.	40
DUTY	S1 CONT	SUPPLY	1.3
BRG/DE	6203	BRG/ODE	6203
BRUSHES	2/BP5011T01		
	IP55	BLANK	
SER.			
BLANK	KW.25 KG12 IC410		
APRV-CSA	Y	APRV-UL	Y
		APRV-CE	Y

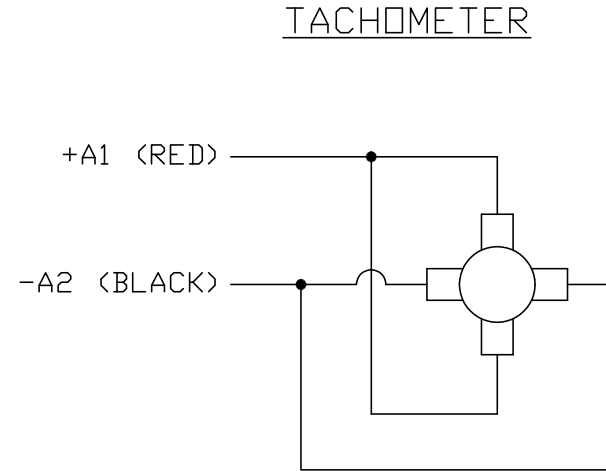
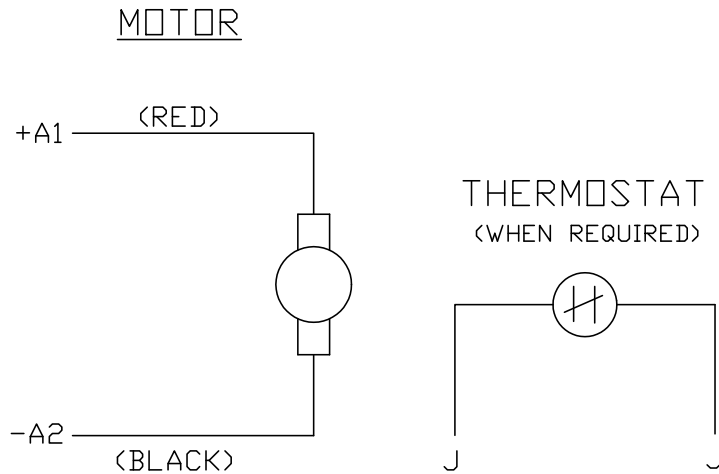
Parts list

Part number	Description	Quantity
SA005089	SA 33-2142Z102	1.000 ea
AA002738	AA 33-2142Z102	1.000 ea
BP5011T01SP	CARBON BRUSH - 33P, 90V	1.000 ea
BP5012A04SP	BRUSH SPRING FOR DC MOTORS	1.000 ea
33CB3001B02G	CONDUIT BOX, MACH/COATED LIGHT GRAY PRIM	1.000 ea
33GS1013	GASKET - CONDUIT BOX, .062 WHITE NEOPREN	1.000 ea
51XT0832A08	8-32 X 1/2 TY23 HXWS SLDSR	3.000 ea
HW3001B02	BRASS CUP WASHER W/GROUND SYMBOL TAB,	1.000 ea
51XW0832G07	8-32 X 7/16 TY23 HXWS SLDSR GR	1.000 ea
51XW0832A07	8-32 X .44, TAPTITE II, HEX WSHR SLTD SE	4.000 ea
33EP3101A13W	FR ENDPLATE, MACH W/WHITE EPOXY PAINT	1.000 ea
HW4600A54	SEAL 0.668 X 1.064 X 0.250 DOUBLE SHIELD	1.000 ea
33CB4501A04W	BRUSH INSPECTION COVER, POWDER COAT	2.000 ea
33GS1014	GASKET, BRUSH INSP. COVERTDR 11640	2.000 ea
11XT0832S07	08-32 X 7/16 HX SL WS HD, 304 STAINLESS	6.000 ea
HA6887	SHAFT PROTECTOR STAMPED STEEL 20 GA.	1.000 ea
10XN2520S06	1/4 20X3/8 HX HD CAP S.S.	2.000 ea
HW5100A03	WAVY WASHER (W1543-017)	1.000 ea
33EP3302A14W	PULLEY ENDPLATE ENCL 33PM 56C W/WHITE EP	1.000 ea
HW4600A54	SEAL 0.668 X 1.064 X 0.250 DOUBLE SHIELD	1.000 ea
HW4600B39SP	V-RING SLINGER 0.550 X 0.790 X .18 VITON	1.000 ea
11XN1032S20	10-32 X 1-1/4 HEX WASHER HEAD, SLOTTED	2.000 ea
11XA1016S06	10-16X3/8 SS HEX WSHR SLOT HD TYPE AB	3.000 ea
WD4102A12	SR 6P-4 HEYCO STRN RELIEF OR 23MP06P40 M	1.000 ea
34CB4500A10G	CONDUIT BOX LID,MACH W/GRAY EPOXY POWDER	1.000 ea
33GS1012	GASKET - CONDUIT BOX LID, MODEL 33PM	1.000 ea
11XT0832S07	08-32 X 7/16 HX SL WS HD, 304 STAINLESS	5.000 ea
HW2502D13	SS KEY, 3/16 SQ X 1.375	1.000 ea
HA7000A04	KEY RETAINER 0.625 DIA SHAFTS	1.000 ea
MG1025W01	WILKOFASST, 781.01, SIGNAL WHITE #9003	0.013 ga
33RK5004SP	ROCKERARM	1.000 ea

HA3100S02	THRUBOLT - 10-32 X 9.00 SS	2.000 ea
MG1500Y02	WILKOPON PRIMER YELLOW	0.013 ga
85XU0407S04	4X1/4 U DRIVE PIN STAINLESS	2.000 ea
MJ5001A27	32220KN GRAY SEALER *MIN BUY 4 QTS=1GAL	0.001 qt
MN416A01	TAG-INSTAL-MAINT no wire (2500bx)4/22	1.000 ea
LB1164	LABEL,WARNING AND DRAIN	1.000 ea
LC0194	CONNECTION LABEL	1.000 ea
NP1509	DC, WD, UL CE CSA, W/O THERMAL	1.000 ea
27PA1001	PKG GRP, PRINT PK1027A06	1.000 ea
LB1624	COMBINED WARNING LABEL, ISO/ANSI PICTOGR	1.000 ea
LB1617	UKCA COMPLIANCE STICKER	1.000 ea



CD0194



NOTES:

1. CCW ROTATION AS SHOWN FACING COMMUTATOR END. TO REVERSE MOTOR ROTATION OR TACHOMETER OUTPUT POLARITY INTERCHANGE LEADS A1(RED) & A2(BLACK)
2. LEAD COLORS FOR REFERENCE ONLY & NOT SPECIFIED BY THIS DRAWING. LEAD COLORS SPECIFIED BY LAYOUT DRAWING & BILL OF MATERIAL ONLY.

MATL: -			
REV: E	ADDED NOTE "LEAD COLORS FOR REFERENCE ONLY &..."		
CD0194	SCALE: -	BY: CK	REVISED: 07/28/95
	FILE: AAA00004503	TDR: 0078737	

BALDOR ELECTRIC Co.

CD TYPE P DC PERMANENT MAGNET MOTORS AND TACHOMETERS

CD0194