

BALDOR® • RELIANCE™

Customer information packet

CDPWD3455

1HP, 1750RPM, DC, 56C, 3435P, TEFC, F1

Class - None

Division -

Copyright © All product information within this document is subject to ABB Motors and Mechanical Inc. copyright © protection, unless otherwise noted.

11/23/2024 10:37:10 PM

Specifications

Armature Voltage	180 V
Base Speed	1750 rpm
Enclosure	TEFC
Frame	56C
Frame Material	Steel
Haz Area Class and Group	None
Output Power	1.000 HP
Agency Approvals	CE CSA UR
Ambient Temperature	40 °C
Armature Current	5.0 a
Armature Inertia	13.657 lb-ft ²
Base Indicator	Rigid
Bearing Grease Type	Polyrex EM (-20F +300F)
Drip Cover	No Drip Cover
Duty Rating	CONT
Feedback Device	NO FEEDBACK
Heater Indicator	No Heater
Lifting Lugs	No Lifting Lugs
Motor Lead Exit	Ko Box
Motor Lead Quantity/Wire Size	2 @ 14 AWG, A
Motor Lead Termination	Flying Leads
Motor Standards	NEMA
Mounting Arrangement	F1
Overall Length	15.46 IN
Product Family	Wash Down
Pulley End Bearing Type	Sealed Bearing
RoHS Status	ROHS COMPLIANT
Service Factor	1.00
Shaft Diameter	0.625 IN
Shaft Extension Location	Pulley End

Part detail

Revision	AP
Type	DC
Mech. spec.	34-6418
Base	
Status	PRD/A
Elec. spec.	34WG3865
Layout	34LY6418
Eff. date	08-20-2024
CD Diagram	CD0194
Poles	00
Leads	2#14 A Y
Proprietary	False
Created date	01-01-0001

Shaft Ground Indicator

No Shaft Grounding

Shaft Rotation

Reversible

Shaft Slinger Indicator

Shaft Slinger

Nameplate

NP1509				
CAT.NO.	CDPWD3455			
SPEC.	34-6418-3865			
HP	1	ENCL	TEFC	
RPM	1750 1/MIN			
FRAME	56C	TYPE	3435P	
ARM V	180	ARM A	5	
FLD V		FLD A		
INSUL	F	AMB.	40	
DUTY	CONT	SUPPLY	1.5	
BRG/DE	6203	BRG/ODE	6203	
BRUSHES	2/BP5000AW14			
		BLANK	IP55	
SER.				
BLANK	KW.75 KG20 IC411			
APRV-CSA	Y	APRV-UL	Y	APRV-CE Y

Parts list

Part number	Description	Quantity
SA005389	SA 34-6418-3865	1.000 ea
AA003038	AA 34-6418-3865	1.000 ea
BP5000AW14SP	CARBON BRUSH - 33P, 180 VOLTS	1.000 ea
HA3210B66	.125 DIA X .281 (AUTO)	2.000 ea
34EP3103B50W	FR EP MACH 34PM TEFC W/NPT LH, SPL DRN L	1.000 ea
51XB1016A06	10-16X3/8 HXWSSLD SERTYB	3.000 ea
11XW1032G06	10-32 X .38, TAPTITE II, HEX WSHR SLTD U	1.000 ea
HW5100A03	WAVY WASHER (W1543-017)	1.000 ea
34EP3300A41W	PU ENDPLATE 56C 34-ENCL FOR WASHDOWN DC	1.000 ea
11XN1032S20	10-32 X 1-1/4 HEX WASHER HEAD, SLOTTED	2.000 ea
BP5201A17	BRUSH HOLDER - WITHOUT CAP & CONN.	2.000 ea
80XN1032J03	10-32 X 3/16 SET SCREW, HEX SOC, CUP PT	2.000 ea
BP3000A01	LEAD LEFT CLIP,33-A (PHOENIX)	2.000 ea
34FN3002A01SP	EXTERNAL FAN, PLASTIC, .637/.639 HUB W/	1.000 ea
34FH5002A01SP	FAN COVER ASSY W/SHAFT COVER	1.000 ea
11XW1032S06	10-32 X .38, TAPTITE II, HEX WSHR SLTD U	3.000 ea
34CB4504W	CON.BOX LID W/WHITE POWDER COAT	1.000 ea
34GS1011A03	GASKET, CONDUIT BOX LID (.062 WHITE)	1.000 ea
59XW0832S07	TAPTITE II,HEX WSHR UNSLTD SER,410 S.S.,	2.000 ea
HW4600B39SP	V-RING SLINGER 0.550 X 0.790 X .18 VITON	1.000 ea
HW4600B39SP	V-RING SLINGER 0.550 X 0.790 X .18 VITON	1.000 ea
LB1164	LABEL,WARNING AND DRAIN	1.000 ea
MJ5001A27	32220KN GRAY SEALER *MIN BUY 4 QTS=1GAL	0.001 qt
MJ5004A05	#242-21 LOCTITE GENERAL PURPOSE MED. STR	0.001 ea
HW2502D13	SS KEY, 3/16 SQ X 1.375	1.000 ea
HA7000A04	KEY RETAINER 0.625 DIA SHAFTS	1.000 ea
BP4543A01	BRUSH HOLDER CAP, AE-74-SO W/'O'RING	2.000 ea
HW3001B02	BRASS CUP WASHER W/GROUND SYMBOL TAB,	1.000 ea
HW4600A54	SEAL 0.668 X 1.064 X 0.250 DOUBLE SHIELD	1.000 ea
WD4100A109	PLUG STIMPSON D3550	1.000 ea
HW4600A54	SEAL 0.668 X 1.064 X 0.250 DOUBLE SHIELD	1.000 ea

11XA1016S06	10-16X3/8 SS HEX WSHR SLOT HD TYPE AB	3.000 ea
WD4102A01	SR-6L-1 HEYCO STRN RELIEF OR 23MPO6L10 M	1.000 ea
MG1025W01	WILKOFAS, 781.01, SIGNAL WHITE #9003	0.014 ga
MG1500Y02	WILKOPON PRIMER YELLOW	0.014 ga
85XU0407S04	4X1/4 U DRIVE PIN STAINLESS	2.000 ea
ML14A1B14	14 AWG,A1,BLACK	8.500 in
ML14A2B14	14 AWG,A2,BLACK	8.500 in
LC0194	CONNECTION LABEL	1.000 ea
NP1509	DC, WD, UL CE CSA, W/O THERMAL	1.000 ea
HA3100S11	THRUBOLT - 10-32 X 8.500 W	4.000 ea
MN416A01	TAG-INSTAL-MAINT no wire (2500bx)4/22	1.000 ea
27PA1001	PKG GRP, PRINT PK1027A06	1.000 ea
LB1624	WARNING LABEL, CE WARNING SYMBOLS ONLY	1.000 ea
LB1617	UKCA COMPLIANCE STICKER	1.000 ea

DC Motor Performance Data

Record # 237

Typical performance - not guaranteed values

Winding: 34WG3865-R001		Type: 3435P		Enclosure: TEFC	
Nameplate Data			General Characteristics		
Rated Output (HP)	1	Armature Resistance @ 25°C	1.9971 Ω		
R.P.M.	1750				
Armature Volts	180				
Armature Amps	5				
Field Volts					
Field Amps					
Rating - Duty	40C AMB-CONT				
Form Factor	1.5				

Load Characteristics at 180 Armature Volts

Load Point	1	2	3	4	5	6	7
Armature Amps	0.23	1.41	2.52	3.66	4.83	7.05	9.26
R.P.M.	1870	1829	1794	1755	1720	1643	1590
Torque (LB-FT)	0	0.75	1.51	2.26	3.05	4.55	6.03

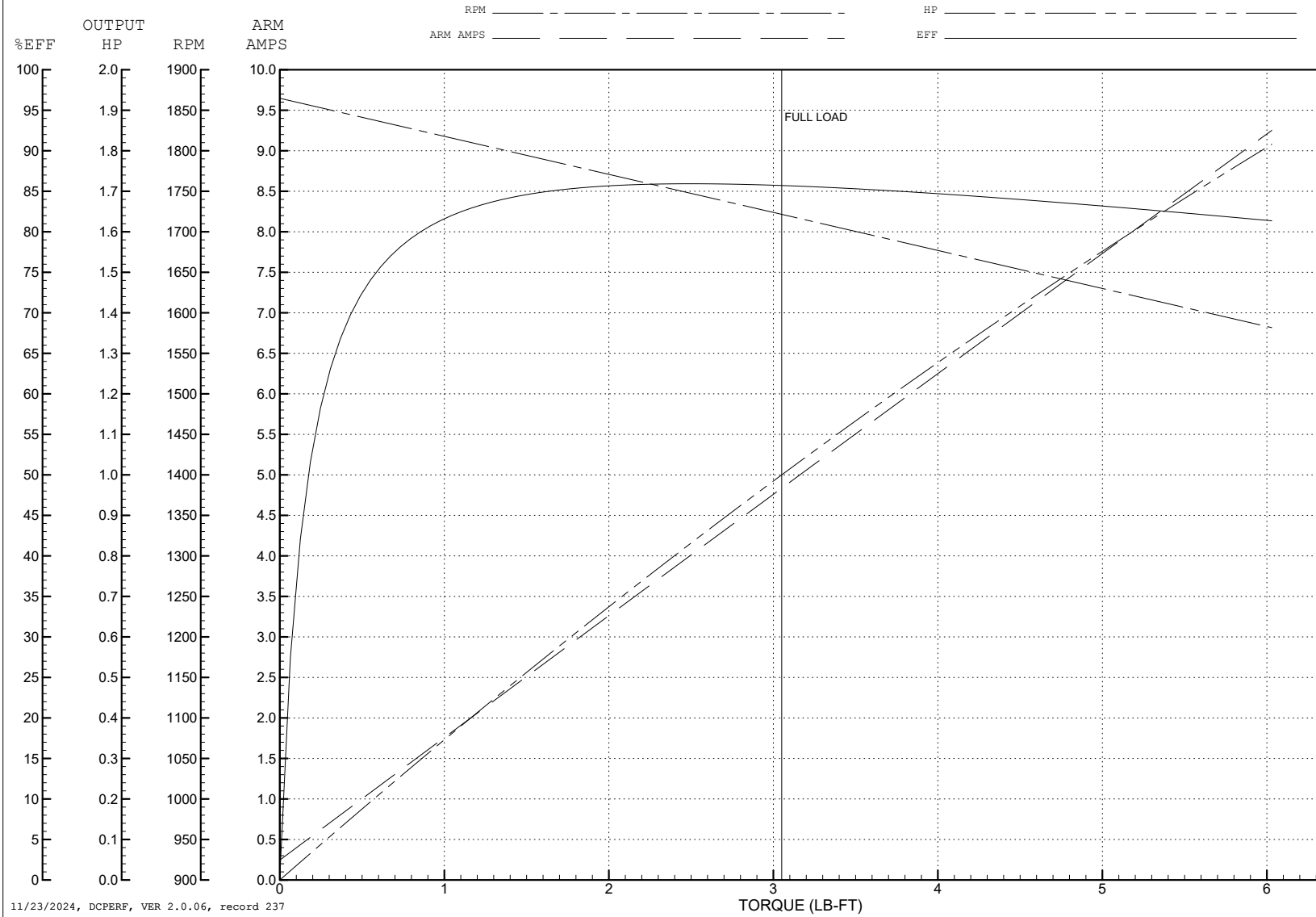
ABB Motors and Mechanical Inc.

WINDING # 34WG3865

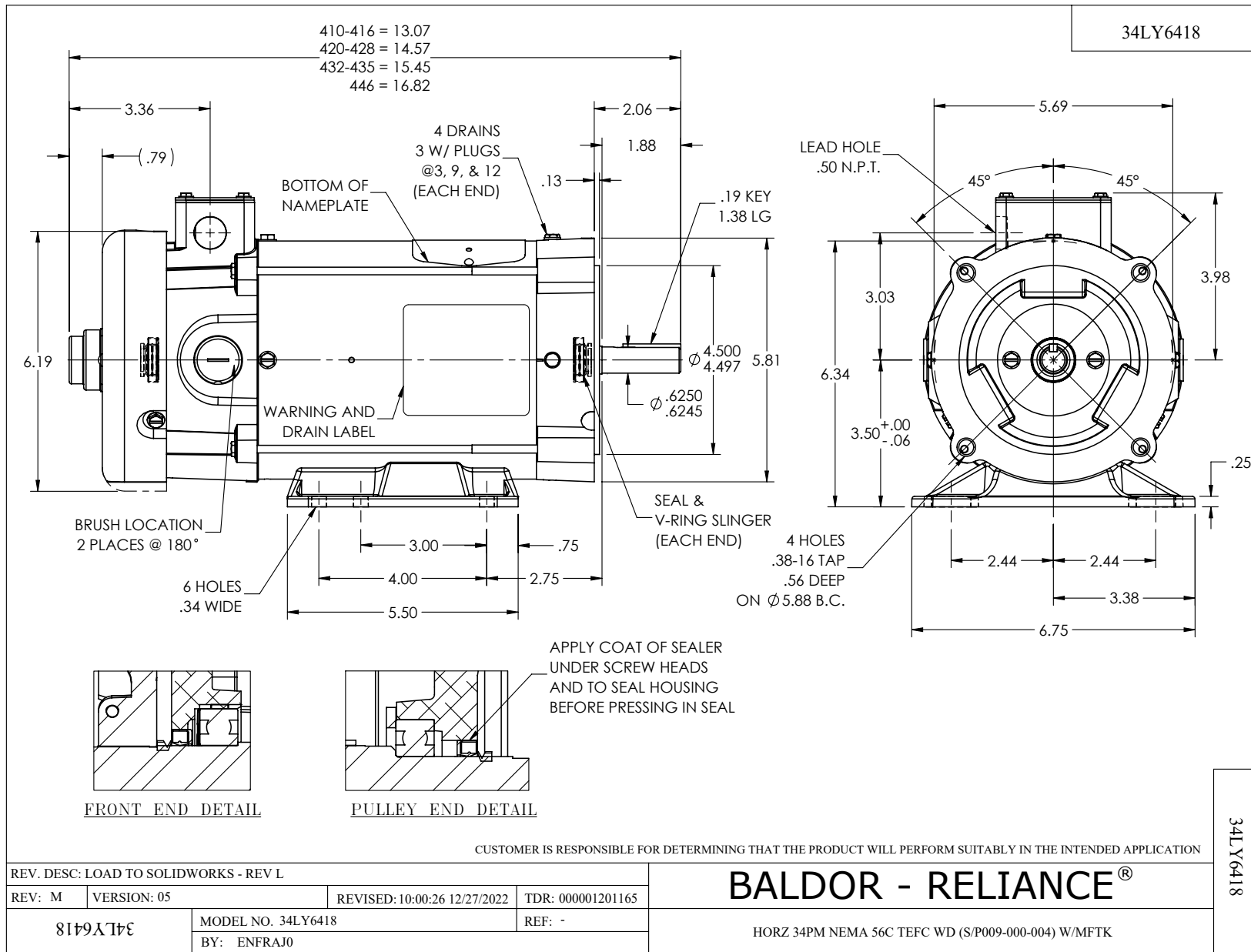
1 HP DC 1750 RPM 180 V 3435P

Typical performance - not guaranteed values.

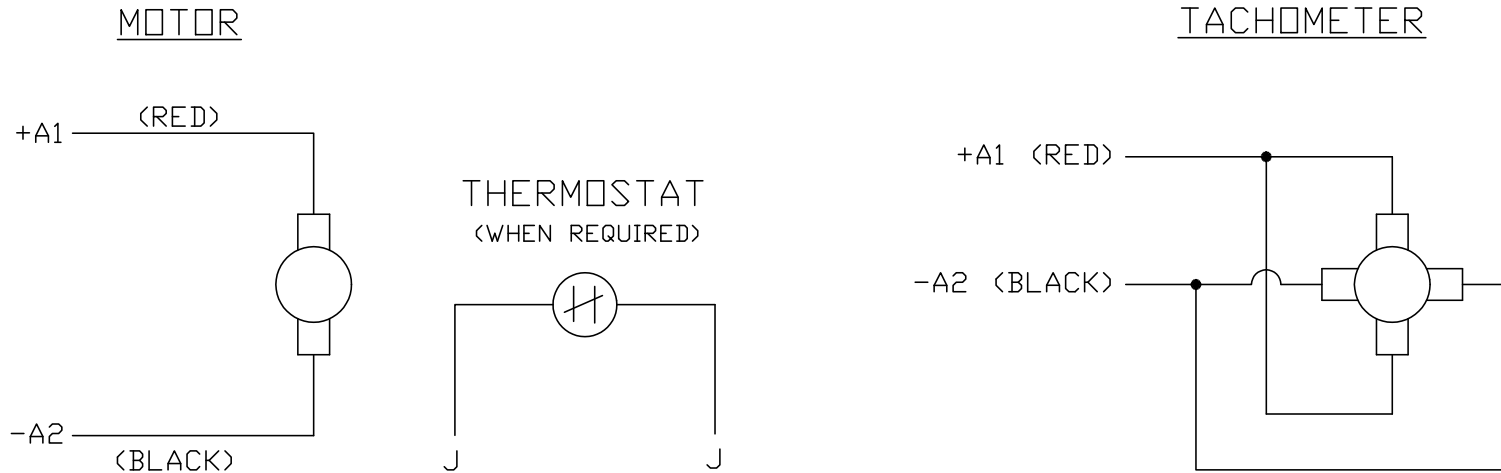
ENCL: TEFC DUTY: CONT CL: F



11/23/2024, DCPERF, VER 2.0.06, record 237



CD0194



NOTES:

1. CCW ROTATION AS SHOWN FACING COMMUTATOR END. TO REVERSE MOTOR ROTATION OR TACHOMETER OUTPUT POLARITY INTERCHANGE LEADS A1(RED) & A2(BLACK)
2. LEAD COLORS FOR REFERENCE ONLY & NOT SPECIFIED BY THIS DRAWING. LEAD COLORS SPECIFIED BY LAYOUT DRAWING & BILL OF MATERIAL ONLY.

MATL: -			
REV: E	ADDED NOTE "LEAD COLORS FOR REFERENCE ONLY &..."		
761000	SCALE: -	BY: CK	REVISED: 07/28/95
	FILE: AAA00004503	TDR: 0078737	

BALDOR ELECTRIC Co.

CD TYPE P DC PERMANENT MAGNET MOTORS AND TACHOMETERS

CD0194