

BALDOR® • RELIANCE™

Customer information packet

CDPWD3585

2HP, 1750RPM, DC, 145TC, 3548P, TEFC, F1

Class - None

Division -

Copyright © All product information within this document is subject to ABB Motors and Mechanical Inc. copyright © protection, unless otherwise noted.

4/4/2025 1:39:21 AM

Specifications

Armature Voltage	180 V
Base Speed	1750 rpm
Enclosure	TEFC
Frame	145TC
Frame Material	Steel
Haz Area Class and Group	None
Output Power	2.000 HP
Agency Approvals	CE CSA UR
Ambient Temperature	40 °C
Armature Current	9.6 a
Armature Inertia	40.456 lb-ft ²
Base Indicator	Rigid
Bearing Grease Type	Polyrex EM (-20F +300F)
Drip Cover	No Drip Cover
Duty Rating	CONT
Feedback Device	NO FEEDBACK
Heater Indicator	No Heater
Lifting Lugs	No Lifting Lugs
Motor Lead Exit	Ko Box
Motor Lead Quantity/Wire Size	2 @ 14 AWG, A
Motor Lead Termination	Flying Leads
Motor Standards	NEMA
Mounting Arrangement	F1
Overall Length	18.17 IN
Product Family	Wash Down
Pulley End Bearing Type	Sealed Bearing
RoHS Status	ROHS COMPLIANT
Service Factor	1.00
Shaft Diameter	0.875 IN
Shaft Extension Location	Pulley End

Part detail

Revision	AN
Type	DC
Mech. spec.	35P523
Base	
Status	PRD/A
Elec. spec.	35WGZ170
Layout	35LYP523
Eff. date	02-21-2024
CD Diagram	CD0194
Poles	00
Leads	2#14 A Y
Proprietary	False
Created date	01-01-0001

Shaft Ground Indicator

No Shaft Grounding

Shaft Rotation

Reversible: Connected Standard

Shaft Slinger Indicator

Shaft Slinger

Nameplate

NP1509					
CAT.NO.	CDPWD3585				
SPEC.	35P523Z170				
HP	2/KW1.4	ENCL	TEFC		
RPM	1750 1/MIN				
FRAME	145TC	TYPE	3548P		
ARM V	180	ARM A	9.6		
FLD V	FLD A				
INSUL	F	AMB.	40		
DUTY	CONT	SUPPLY	K		
BRG/DE	6205	BRG/ODE	6205		
BRUSHES	2/BP5000T15				
	BLANK				
SER.					
BLANK	IP55 KG33 IC411				
APRV-CSA	Y	APRV-UL	Y	APRV-CE	Y

Parts list

Part number	Description	Quantity
SA005548	SA 35P523Z170	1.000 ea
AA003197	AA 35P523Z170	1.000 ea
BP5000T15SP	CARBON BRUSH-35P,180VOLTS	1.000 ea
11XW1032G06	10-32 X .38, TAPTITE II, HEX WSHR SLTD U	1.000 ea
HW3001B02	BRASS CUP WASHER W/GROUND SYMBOL TAB,	1.000 ea
HW4600B49	SEAL 0.938 X 1.624 X 0.250 SINGLE LIP DB	1.000 ea
HA1005A03SP	SLINGER, OD 1.750, ID .938, 205 BRG	1.000 ea
HW5100A05	WVY WSHR F/205 & 304 BRGS	1.000 ea
HW4600B49	SEAL 0.938 X 1.624 X 0.250 SINGLE LIP DB	1.000 ea
HA1005A15	SLINGER,.860 ID X 1.625 OD X .125 THICK	1.000 ea
12XN1032S20	10-32 X 1-1/4 HEX M.S. , STAINLESS STEEL	2.000 ea
BP5201A18	BRUSH HOLDER - WITHOUT CAP & CONN.	2.000 ea
BP4543A01	BRUSH HOLDER CAP, AE-74-SO W/'O'RING	2.000 ea
BP3000A01	LEAD LEFT CLIP,33-A (PHOENIX)	2.000 ea
80XN1032J03	10-32 X 3/16 SET SCREW, HEX SOC, CUP PT	2.000 ea
MJ5004A05	#242-21 LOCTITE GENERAL PURPOSE MED. STR	0.001 ea
35FN3002A05SP	EXFN, PLASTIC, 6.376 OD, .638 ID	1.000 ea
51XB1214A16	12-14X1.00 HXWSSLD SERTYB	1.000 ea
11XW1032S06	10-32 X .38, TAPTITE II, HEX WSHR SLTD U	3.000 ea
WD4102A01	SR-6L-1 HEYCO STRN RELIEF OR 23MPO6L10 M	1.000 ea
WD4100A17	PLUG STIMPSON D4036	1.000 ea
35GS1010A01	GASKET, CONDUIT BOX LID TDR 11640	1.000 ea
59XW0832S07	TAPTITE II,HEX WSHR UNSLTD SER,410 S.S.,	2.000 ea
HW2502D13	SS KEY, 3/16 SQ X 1.375	1.000 ea
HA7000A01	KEY RETAINER 7/8" DIA SHAFT	1.000 ea
LB1164	LABEL,WARNING AND DRAIN	1.000 ea
35EP3110A14W	FR EP TEFC 35PM W/WHITE POWDER COAT PAIN	1.000 ea
35EP3301A05W	PU E.P. ENCL, 56C 35PM-205 BRG W/WHITE P	1.000 ea
35FH5001A10WP	DRIP COVER ASS'Y TEFC HOR,EPOXY PRIMER P	1.000 ea
35CB4506W	CONDUIT BOX LID, STAMPED W/WHITE POWDER	1.000 ea
MJ5001A27	32220KN GRAY SEALER *MIN BUY 4 QTS=1GAL	0.001 qt

MG1025W01	WILKOFAST, 781.01, SIGNAL WHITE #9003	0.017 ga
MG1500Y02	WILKOPON PRIMER YELLOW	0.017 ga
85XU0407S04	4X1/4 U DRIVE PIN STAINLESS	2.000 ea
HW4032A01	BLACK DRAIN PLUG FOR WASH DOWN MOTORS	3.000 ea
HW4032A01	BLACK DRAIN PLUG FOR WASH DOWN MOTORS	3.000 ea
HA3101S25	THRUBOLT 1/4-20 X 11.00	4.000 ea
LB1624	COMBINED WARNING LABEL, ISO/ANSI PICTOGR	1.000 ea
MN416A01	TAG-INSTAL-MAINT no wire (2500bx)4/22	1.000 ea
LC0194	CONNECTION LABEL	1.000 ea
NP1509	DC, WD, UL CE CSA, W/O THERMAL	1.000 ea
35PA1007	PKG GRP, PRINT PK1034A06	1.000 ea

DC Motor Performance Data

Record # 2081

Typical performance - not guaranteed values

Winding: 35WGZ170-R001		Type: 3548P		Enclosure: TEFC	
Nameplate Data			General Characteristics		
Rated Output (HP)	2	Armature Resistance @ 25°C	0.8093 Ω		
R.P.M.	1750	Voltage Constant	98.25 v/krpm		
Armature Volts	180	Armature Inductance	11.508 mH		
Armature Amps	9.6	Armature Inertia	40.456 LI ²		
Field Volts					
Field Amps					
Rating - Duty	40C AMB-CONT				
Power Supply Code	K				

Load Characteristics at 180 Armature Volts

Load Point	1	2	3	4	5	6	7
Armature Amps	0.2	2.4	4.7	6.8	9	11.3	13.5
R.P.M.	1806	1796	1770	1741	1707	1671	1663
Torque (LB-FT)	0	1.5	3	4.5	6	7.5	9

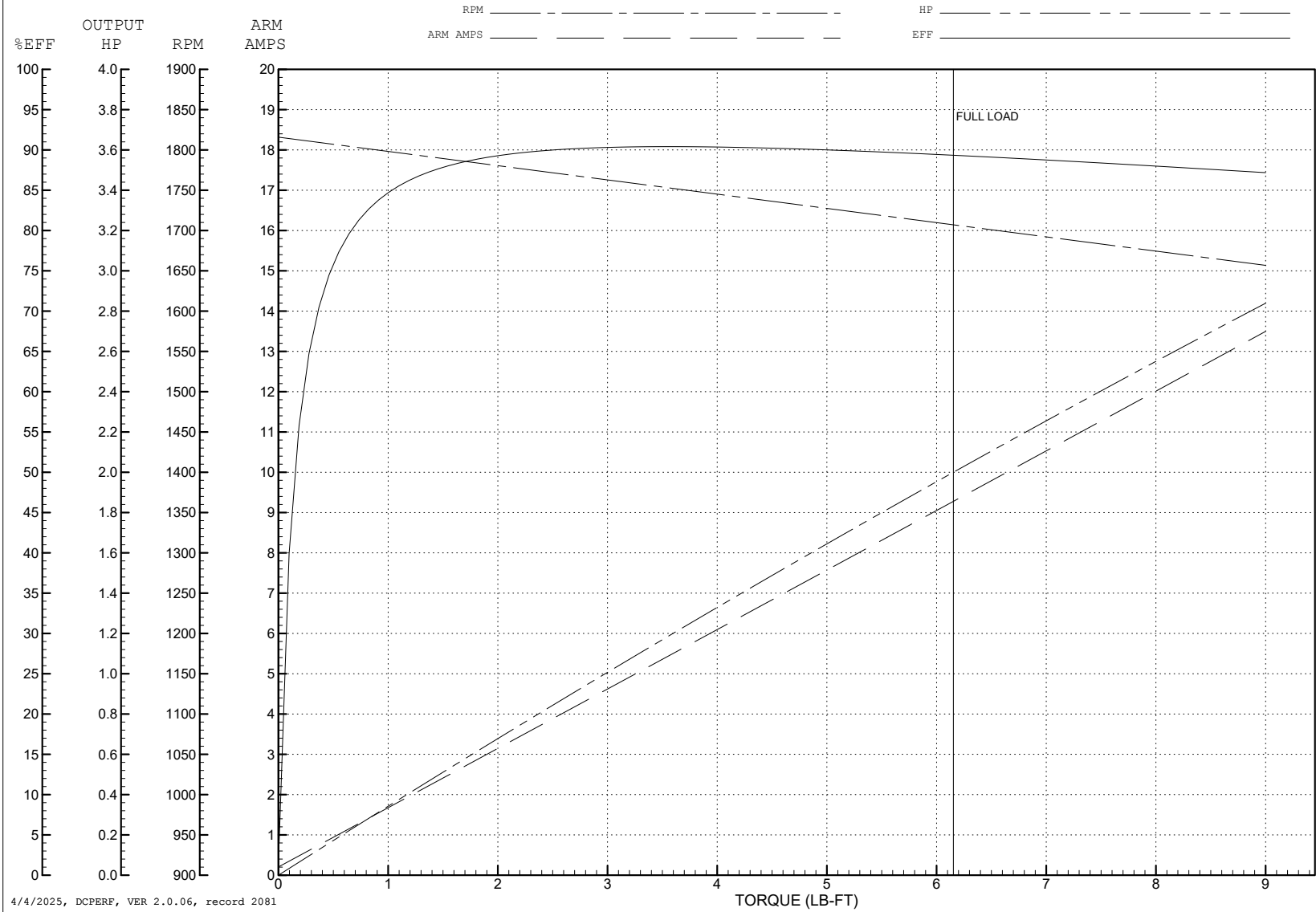
ABB Motors and Mechanical Inc.

WINDING # 35WGZ170

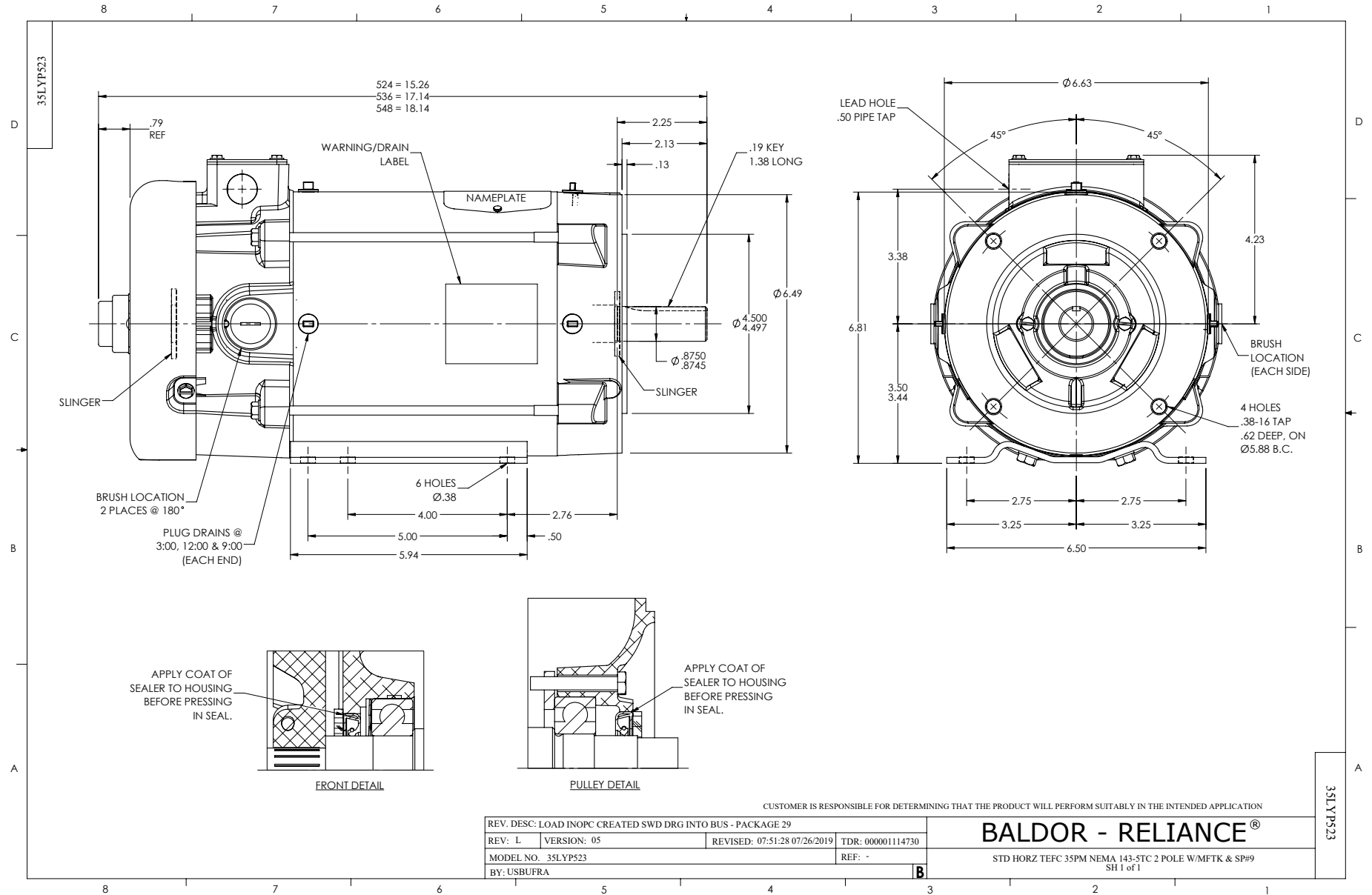
2 HP DC 1750 RPM 180 V 3548P

Typical performance - not guaranteed values.

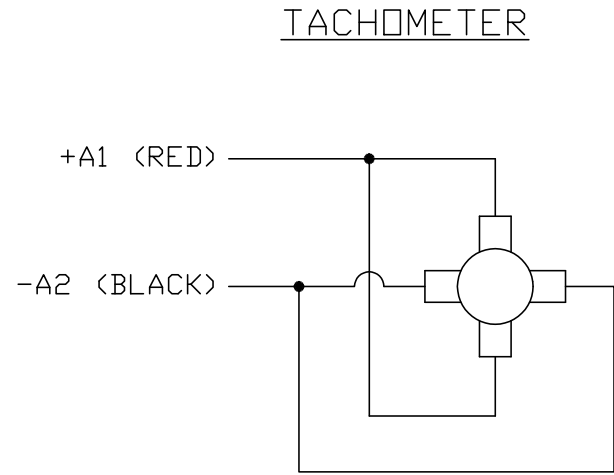
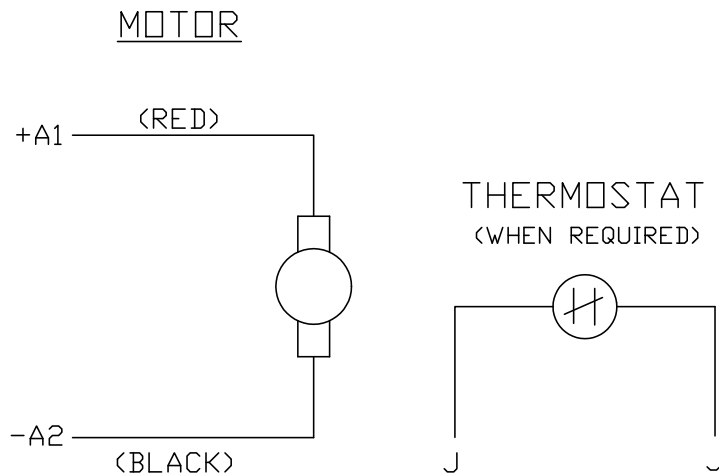
ENCL: TEFC DUTY: CONT CL: F



4/4/2025, DCPERF, VER 2.0.06, record 2081



CD0194



NOTES:

1. CCW ROTATION AS SHOWN FACING COMMUTATOR END. TO REVERSE MOTOR ROTATION OR TACHOMETER OUTPUT POLARITY INTERCHANGE LEADS A1(RED) & A2(BLACK)
2. LEAD COLORS FOR REFERENCE ONLY & NOT SPECIFIED BY THIS DRAWING. LEAD COLORS SPECIFIED BY LAYOUT DRAWING & BILL OF MATERIAL ONLY.

MATL: -			
REV: E	ADDED NOTE "LEAD COLORS FOR REFERENCE ONLY &..."		
CD0194	SCALE: -	BY: CK	REVISED: 07/28/95
	FILE: AAA00004503	TDR: 0078737	

BALDOR ELECTRIC Co.

CD TYPE P DC PERMANENT MAGNET MOTORS AND TACHOMETERS

CD0194