

BALDOR® • RELIANCE™

Customer information packet

CDRX050544

0.5HP, 1770//1475RPM, 3PH, 60//50HZ, 56C, 351

Class - CLI GP C,D

Division - Division I

Copyright © All product information within this document is subject to ABB Motors and Mechanical Inc. copyright © protection, unless otherwise noted.

11/23/2024 11:11:22 PM

Specifications

Enclosure	XPNV
Frame	56C
Frame Material	Steel
Frequency	50.00 Hz 60.00 Hz
Haz Area Class and Group	CLI GP C,D
Haz Area Division	Division I
Motor Letter Type	Three Phase
Output @ Frequency	.500 HP @ 60 HZ
Phase	3
Synchronous Speed @ Frequency	1800 RPM @ 50 HZ
Voltage @ Frequency	460.0 V @ 60 HZ 380.0 V @ 50 HZ 230.0 V @ 60 HZ 190.0 V @ 50 HZ
Agency Approvals	CSA UL
Ambient Temperature	40 °C
Auxillary Box	No Auxillary Box
Auxillary Box Lead Termination	None
Base Indicator	Rigid
Bearing Grease Type	Polyrex EM (-20F +300F)
Blower	None
Constant Torque Speed Range	6
Current @ Voltage	1.900 A @ 208.0 V 1.800 A @ 230.0 V 1.740 A @ 190.0 V .900 A @ 460.0 V .870 A @ 380.0 V
Design Code	B
Drip Cover	No Drip Cover
Duty Rating	CONT

Part detail

Revision	D
Type	AC
Mech. spec.	
Base	
Status	PRD/A
Elec. spec.	35WGG155
Layout	35LYX724
Eff. date	10-11-2024
CD Diagram	CD0005
Poles	04
Leads	9#18
Proprietary	False
Created date	10-28-2021

Efficiency @ 100% Load	80.0 %
Electrically Isolated Bearing	Not Electrically Isolated
Feedback Device	NO FEEDBACK
Heater Indicator	No Heater
High Voltage Full Load Amps	0.9 a
Insulation Class	F
Inverter Code	Inverter Duty
KVA Code	M
Lifting Lugs	No Lifting Lugs
Locked Bearing Indicator	Locked Bearing
Max Speed	2700 rpm
Motor Lead Termination	Flying Leads
Motor Standards	NEMA
Motor Type	3512M
Mounting Arrangement	F1
Number of Poles	4
Overall Length	13.14 IN
Power Factor	65
Product Family	General Purpose
Pulley Face Code	C-Face
Rodent Screen	None
Service Factor	1.00
Shaft Diameter	0.625 IN
Shaft Ground Indicator	No Shaft Grounding
Shaft Rotation	Reversible
Speed	1770 rpm
Speed Code	Single Speed
Starting Method	Direct on line
Thermal Device - Bearing	None
Thermal Device - Winding	Normally Closed Thermostat
Vibration Sensor Indicator	No Vibration Sensor
Winding Thermal 1	None
Winding Thermal 2	None

Nameplate

NP1401XPSL									
NO.		CC							
S/N		TEMP CODE	T3C						
SPEC.	35-0000-1351	INV.TYPE	PWM						
CAT.NO.	CDRX050544	C HP FR	60	C HP TO	90				
HP	.5//.33	CT HZ FROM	6	CT HZ TO	60				
VOLTS	230/460//190/380	VT HZ FROM	6	VT HZ TO	60				
AMPS	1.8/.9//1.74/.87	MAG CUR	1.58/.79						
RPM	1770//1475	MX RPM	2700						
HZ	60//50	PH	3	CL	F	NOM.EFF.	80		
SER.F.	1.00	DES	B	SL HZ	1	WK2	0.087		
FRAME	56C	RATING	40C AMB-CONT						
	55C AMB @ 1.0 SF								
	1.15 SF SINEWAVE			NEMA MG-1 PT 5, IP55					

Parts list

Part number	Description	Quantity
SA400480	SA 35-0000-1351	1.000 ea
RA391642	RA 35-0000-1351	1.000 ea
LB1624	COMBINED WARNING LABEL, ISO/ANSI PICTOGR	1.000 ea
LC0145B01	CONNECTION LABEL	1.000 ea
NP1401XPSL	SS XP INV UL CSA CC CL-I GP-C&D	1.000 ea
85XU0407S04	4X1/4 U DRIVE PIN STAINLESS	4.000 ea
85XU0407S04	4X1/4 U DRIVE PIN STAINLESS	2.000 ea
MN416A01	TAG-INSTAL-MAINT no wire (2500bx)4/22	1.000 ea
LB1359F	ALUM XP CAUTION LABEL	1.000 ea
MJ1000A02	GREASE, POLYREX EM EXXON	0.050 lb
HA3104A06	THRUBOLT 5/16-18 X 8.50 OHIO ROD	4.000 ea
XY3118A12	5/16-18 HEX NUT DIRECTIONAL SERRATION	4.000 ea
35EP1700A62	FRONT END PLATE TENV XPNV, DRAINS	1.000 ea
HW5100A03	WAVY WASHER (W1543-017)	1.000 ea
HW4506A02	BREATHER/DRAIN-EXP PROOF-.125-27 NPTF AI	1.000 ea
HW3022E05	.125 DIA X .500 ROLLED SPRING PIN	1.000 ea
35EP1704A39	PUEP 205 BRG XP GRP C W/SLINGER, DRAIN	1.000 ea
HA2071A02	ALUM SLINGER 205 BRG DRILL RIG MOTOR	1.000 ea
80XN1032J04	10-32 X 1/4 SET SCREW, HEX SOC, CUP PT	1.000 ea
84XN1032J20	SCREW, SOC 10-32 X 1 1/4"BMH4602	2.000 ea
HW4001A01	1/4 HX SOC PIPE PLG (F/S) ALLOY STEEL W/	2.000 ea
63XN1032A07	10-32 X 7/16 TRUSS HEAD,TORX SERRATED ZN	2.000 ea
HW4506A02	BREATHER/DRAIN-EXP PROOF-.125-27 NPTF AI	1.000 ea
HW3022E05	.125 DIA X .500 ROLLED SPRING PIN	1.000 ea
35CB1005A01	CONDUIT BOX,MACH - GROUP "C" MTRS	1.000 ea
11XW1032G06	10-32 X .38, TAPTITE II, HEX WSHR SLTD U	1.000 ea
HW3001B01	BRASS CUP WASHER, FOR #10 SCREW	1.000 ea
35CB1501A01	CONDUIT BOX LID, MACH. - GROUP "C" MTRS	1.000 ea
RM1020A41	O-RING, -150 BUNA-N, .103 CS X 2.862 ID	1.000 ea
MG1500Y02	WILKOPON PRIMER YELLOW	0.022 ga
MG1025G29	WILKOFAS, 789.229, DARK CHARCOAL GRAY	0.022 ga

36PA1000	PKG GRP, PRINT PK1016A06	1.000 ea
HW2501D13	KEY, 3/16 SQ X 1.375	1.000 ea
HA7000A04	KEY RETAINER 0.625 DIA SHAFTS	1.000 ea

AC Induction Motor Performance Data

Record # 90036

Typical performance - not guaranteed values

Winding: 35WGG155-R049		Type: 3512M		Enclosure: TEFC	
Nameplate Data			460 V, 60 Hz: High Voltage Connection		
Rated Output (HP)	.5//.33		Full Load Torque	1.49 LB-FT	
Volts	230/460//190/380		Start Configuration	direct on line	
Full Load Amps	1.8/.9//1.74/.87		Breakdown Torque	6.28 LB-FT	
R.P.M.	1770//1475		Pull-up Torque	3.26 LB-FT	
Hz	60//50	Phase	3	Locked-rotor Torque	4.04 LB-FT
NEMA Design Code	B KVA Code		M	Starting Current	6.71 A
Service Factor (S.F.)			1	No-load Current	0.792 A
NEMA Nom. Eff.	80	Power Factor	65	Line-line Res. @ 25°C	43.2 Ω
Rating - Duty	40C AMB-CONT			Temp. Rise @ Rated Load	22°C
				Locked-rotor Power Factor	70.7767
				Rotor inertia	0.0866 lb-ft ²

Load Characteristics 460 V, 60 Hz, 0.5 HP

% of Rated Load	25	50	75	100	125	150
Power Factor	27	41	52	62	69	75
Efficiency	56.5	70.7	76.5	78.9	80	80
Speed	1792	1786	1779	1771	1763	1755
Line amperes	0.795	0.827	0.889	0.966	1.06	1.18

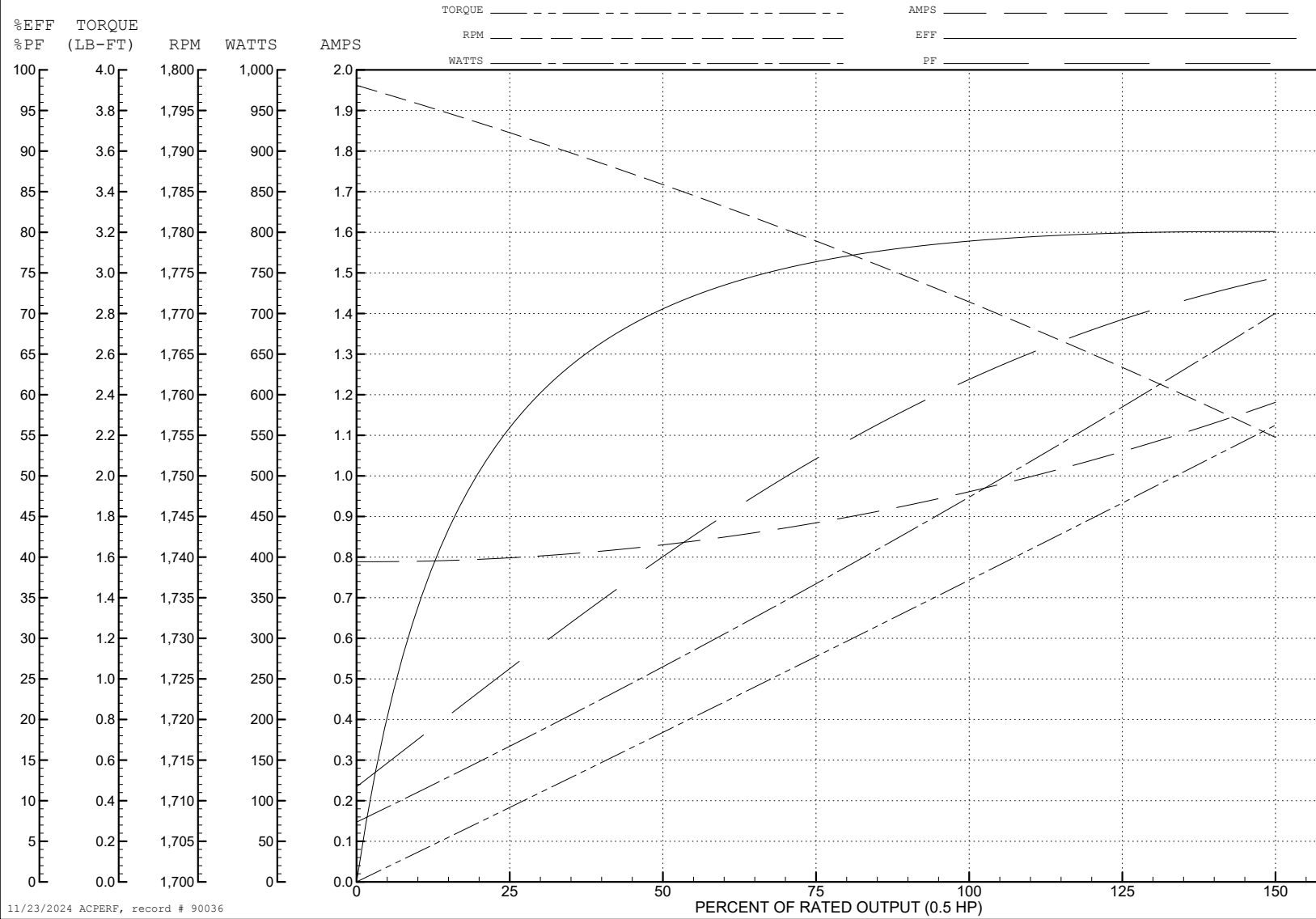
ABB Motors and Mechanical Inc.

WINDING # 35WGG155

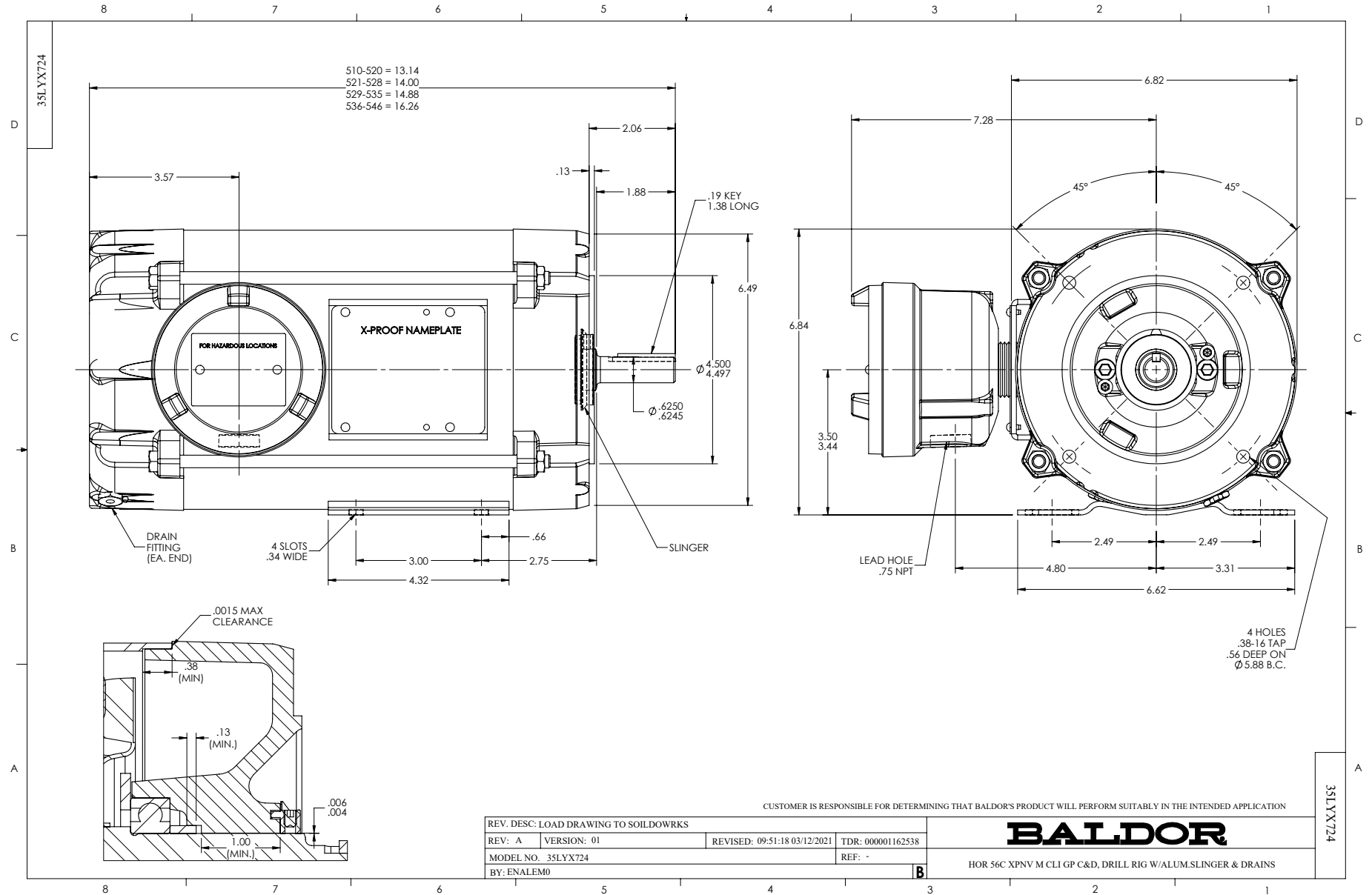
0.5 HP 3 PH 60 HZ 1771 RPM 460 V 3512M

Typical performance - not guaranteed values.

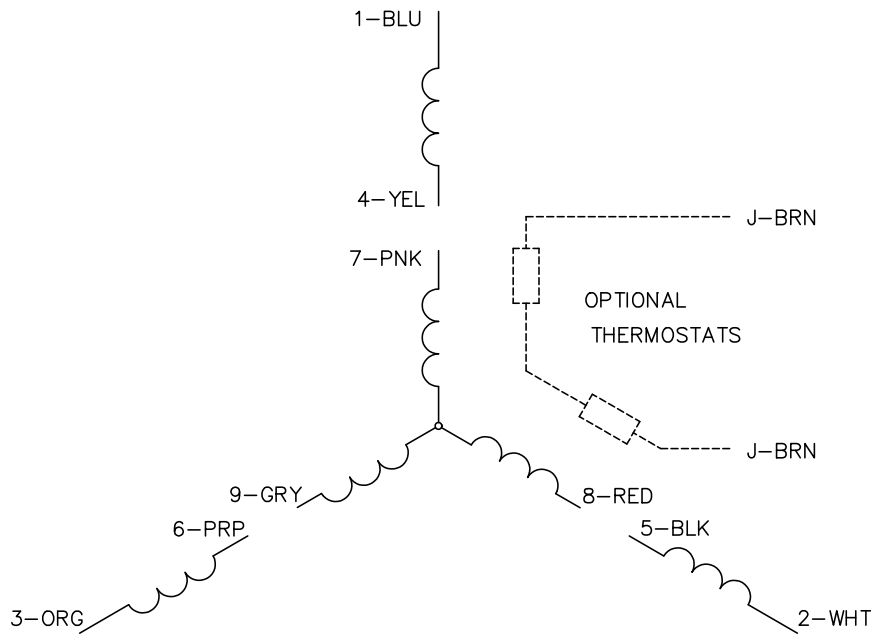
TORQUES (LB-FT): PO=6.28 PU=3.26 LR=4.04 LRA=6.71



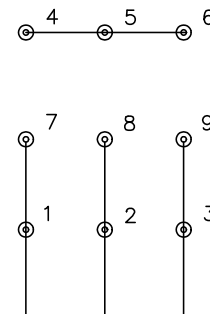
11/23/2024 ACPERF, record # 90036



CD0005

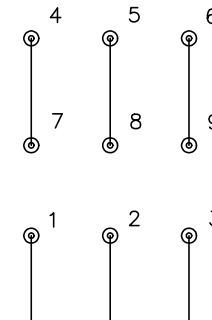


LOW VOLTAGE
(2Y)



LINE

HIGH VOLTAGE
(1Y)



LINE

NOTES:

1. INTERCHANGE ANY TWO LINE LEADS TO REVERSE ROTATION.
2. OPTIONAL THERMOSTATS ARE PROVIDED WHEN SPECIFIED.
3. ACTUAL NUMBER OF INTERNAL PARALLEL CIRCUITS MAY BE A MULTIPLE OF THOSE SHOWN ABOVE.
4. LEAD COLORS ARE OPTIONAL. LEADS MUST ALWAYS BE NUMBERED AS SHOWN.

CD0005

REV. DESC: REVISE TO SHOW OPTIONAL COLORS			
REV. LTR: E	BY: JLP	REVISED: 01/19/99 10:15	TDR: 0171435
S00000		FILE: AAA00005140	MDL: -
		MTL: -	

BALDOR ELECTRIC Co.

3PH, DV, 9 LEADS