

BALDOR • RELIANCE

Customer information packet

CDRX14164T

1//.75HP, 1155//970RPM, 3PH, 60//50HZ, 145TC

Class - CLI GP C,D

Division - Division I

Copyright © All product information within this document is subject to ABB Motors and Mechanical Inc. copyright © protection, unless otherwise noted.

11/23/2024 10:40:48 PM

Specifications

Enclosure	XPFC
Frame	145TC
Frame Material	Steel
Frequency	50.00 Hz 60.00 Hz
Haz Area Class and Group	CLI GP C,D
Haz Area Division	Division I
Motor Letter Type	Three Phase
Output @ Frequency	1.000 HP @ 60 HZ .750 HP @ 50 HZ
Phase	3
Synchronous Speed @ Frequency	1200 RPM @ 60 HZ
Voltage @ Frequency	190.0 V @ 50 HZ 230.0 V @ 60 HZ 380.0 V @ 50 HZ 460.0 V @ 60 HZ
Agency Approvals	CSA EEV UL
Ambient Temperature	40 °C
Auxillary Box	No Auxillary Box
Auxillary Box Lead Termination	None
Base Indicator	Rigid
Bearing Grease Type	Polyrex EM (-20F +300F)
Blower	None
Current @ Voltage	3.500 A @ 208.0 V 3.200 A @ 190.0 V 3.000 A @ 230.0 V 1.600 A @ 380.0 V 1.500 A @ 460.0 V
Design Code	B
Drip Cover	No Drip Cover
Duty Rating	CONT

Part detail

Revision	B
Type	AC
Mech. spec.	35X732
Base	
Status	PRD/A
Elec. spec.	35WGG019
Layout	35LYX732
Eff. date	03-08-2024
CD Diagram	CD0005
Poles	06
Leads	9#18
Proprietary	False
Created date	02-23-2023

Efficiency @ 100% Load	82.5 %
Electrically Isolated Bearing	Not Electrically Isolated
Feedback Device	NO FEEDBACK
Front Shaft Indicator	None
Heater Indicator	No Heater
High Voltage Full Load Amps	1.5 a
Insulation Class	F
Inverter Code	Inverter Duty
KVA Code	J
Lifting Lugs	No Lifting Lugs
Locked Bearing Indicator	Locked Bearing
Max Speed	1800 rpm
Motor Lead Quantity/Wire Size	9 @ 18 AWG
Motor Lead Termination	Flying Leads
Motor Standards	NEMA
Motor Type	3526M
Mounting Arrangement	F1
Number of Poles	6
Overall Length	15.21 IN
Power Factor	67
Product Family	Hazardous Location Motor
Pulley End Bearing Type	Ball
Pulley Face Code	C-Face
Pulley Shaft Indicator	Standard
Rodent Screen	None
RoHS Status	ROHS NON-COMPLIANT
Service Factor	1.00
Shaft Diameter	0.875 IN
Shaft Ground Indicator	No Shaft Grounding
Shaft Rotation	Reversible
Speed	1155 rpm 970 rpm
Speed Code	Single Speed
Starting Method	Direct on line

Thermal Device - Bearing	None
Thermal Device - Winding	Normally Closed Thermostat
Vibration Sensor Indicator	No Vibration Sensor
Winding Thermal 1	None
Winding Thermal 2	None

Nameplate

NP1401XPSL									
NO.		CC							
S/N		TEMP CODE	T3C						
SPEC.	35X732G019	INV.TYPE	PWM						
CAT.NO.	CDRX14164T	C HP FR	60	C HP TO	90				
HP	1//.75	CT HZ FROM	6	CT HZ TO	60				
VOLTS	230/460//190/380	VT HZ FROM	6	VT HZ TO	60				
AMPS	3/1.5//3.2/1.6	MAG CUR	2/1						
RPM	1155//970	MX RPM	1800						
HZ	60//50	PH	3	CL	F	NOM.EFF.	82.5		
SER.F.	1.00	DES	B	SL HZ	1.5	WK2	0.189		
FRAME	145TC	RATING	40C AMB-CONT						
	55C AMB @ 1.0 SF								
	1.15 SF SINEWAVE			NEMA MG-1 PT 5,IP55					

Parts list

Part number	Description	Quantity
SA415000	SA 35X732G019	1.000 ea
RA406769	RA 35X732G019	1.000 ea
34FN3002B01	EXTERNAL FAN, PLASTIC, .637/.639 HUB W/	1.000 ea
35CB1005A01	CONDUIT BOX,MACH - GROUP "C" MTRS	1.000 ea
11XW1032G06	10-32 X .38, TAPTITE II, HEX WSHR SLTD U	1.000 ea
HW3001B01	BRASS CUP WASHER, FOR #10 SCREW	1.000 ea
35EP3700B07	FR ENDPLATE, XPFC - GROUP C, W/ DRAIN	1.000 ea
HW4506A02	BREATHER/DRAIN-EXP PROOF-.125-27 NPTF AI	1.000 ea
HW3022E05	.125 DIA X .500 ROLLED SPRING PIN	1.000 ea
HW5100A03	WAVY WASHER (W1543-017)	1.000 ea
HA2009A89	SPACER FOR XP MTRS - 205 BRG.	1.000 ea
35EP1704A40	PUEP 205 BRG XP,GP C,ALUM SLINGER,DRAIN	1.000 ea
HW4506A02	BREATHER/DRAIN-EXP PROOF-.125-27 NPTF AI	1.000 ea
HW3022E05	.125 DIA X .500 ROLLED SPRING PIN	1.000 ea
84XN1032J20	SCREW, SOC 10-32 X 1 1/4"BMH4602	2.000 ea
HW4001A01	1/4 HX SOC PIPE PLG (F/S) ALLOY STEEL W/	2.000 ea
63XN1032A07	10-32 X 7/16 TRUSS HEAD,TORX SERRATED ZN	2.000 ea
XY3118A12	5/16-18 HEX NUT DIRECTIONAL SERRATION	4.000 ea
35FH4005A01SP	IEC FH NO GREASER W/PRIMED	1.000 ea
51XW1032A06	10-32 X .38, TAPTITE II, HEX WSHR SLTD S	3.000 ea
35CB1501A01	CONDUIT BOX LID, MACH. - GROUP "C" MTRS	1.000 ea
RM1020A41	O-RING, -150 BUNA-N, .103 CS X 2.862 ID	1.000 ea
HA2071A02	ALUM SLINGER 205 BRG DRILL RIG MOTOR	1.000 ea
80XN1032J04	10-32 X 1/4 SET SCREW, HEX SOC, CUP PT	1.000 ea
HW2501D13	KEY, 3/16 SQ X 1.375	1.000 ea
HA7000A01	KEY RETAINER 7/8" DIA SHAFT	1.000 ea
85XU0407S04	4X1/4 U DRIVE PIN STAINLESS	6.000 ea
LB1359F	ALUM XP CAUTION LABEL	1.000 ea
HA1025A21	WSHR,FELT .125" THK	1.000 ea
LB1624	COMBINED WARNING LABEL, ISO/ANSI PICTOGR	1.000 ea
LC0145B01	CONNECTION LABEL	1.000 ea

NP1401XPSL	SS XP INV UL CSA CC CL-I GP-C&D	1.000 ea
MN416A01	TAG-INSTAL-MAINT no wire (2500bx)4/22	1.000 ea
LB1359F	ALUM XP CAUTION LABEL	1.000 ea
MJ1000A02	GREASE, POLYREX EM EXXON	0.050 lb
HA3104A08	THRUBOLT 5/16-18 X 9.375 X	4.000 ea
MG1500Y02	WILKOPON PRIMER YELLOW	0.022 ga
MG1025G29	WILKOFAST, 789.229, DARK CHARCOAL GRAY	0.022 ga
36PA1001	PKG GRP, PRINT PK1017A06	1.000 ea

AC Induction Motor Performance Data

Record # 73789

Typical performance - not guaranteed values

Winding: 35WGM497-R087		Type: 3526M	Enclosure: XPFC	
Nameplate Data			460 V, 60 Hz: High Voltage Connection	
Rated Output (HP)	1//.75	Full Load Torque	4.51 LB-FT	
Volts	230/460//190/380	Start Configuration	direct on line	
Full Load Amps	3.6/1.8//3.4/1.7	Breakdown Torque	15.23 LB-FT	
R.P.M.	1155//960	Pull-up Torque	11.1 LB-FT	
Hz	60//50 Phase	Locked-rotor Torque	11.9 LB-FT	
NEMA Design Code	B KVA Code	Starting Current	10.8 A	
Service Factor (S.F.)	1	No-load Current	1.21 A	
NEMA Nom. Eff.	82.5 Power Factor	Line-line Res. @ 25°C	16.1 Ω	
Rating - Duty	40C AMB-CONT	Temp. Rise @ Rated Load	48°C	
		Locked-rotor Power Factor	41.5	
		Rotor inertia	0.155 LB-FT ²	

Load Characteristics 460 V, 60 Hz, 1 HP

% of Rated Load	25	50	75	100	125	150
Power Factor	28	44	56	65	71	75
Efficiency	66	77	80.7	81.4	80.9	79.5
Speed	1190	1180	1170	1158	1145	1129
Line amperes	1.25	1.37	1.54	1.77	2.04	2.35

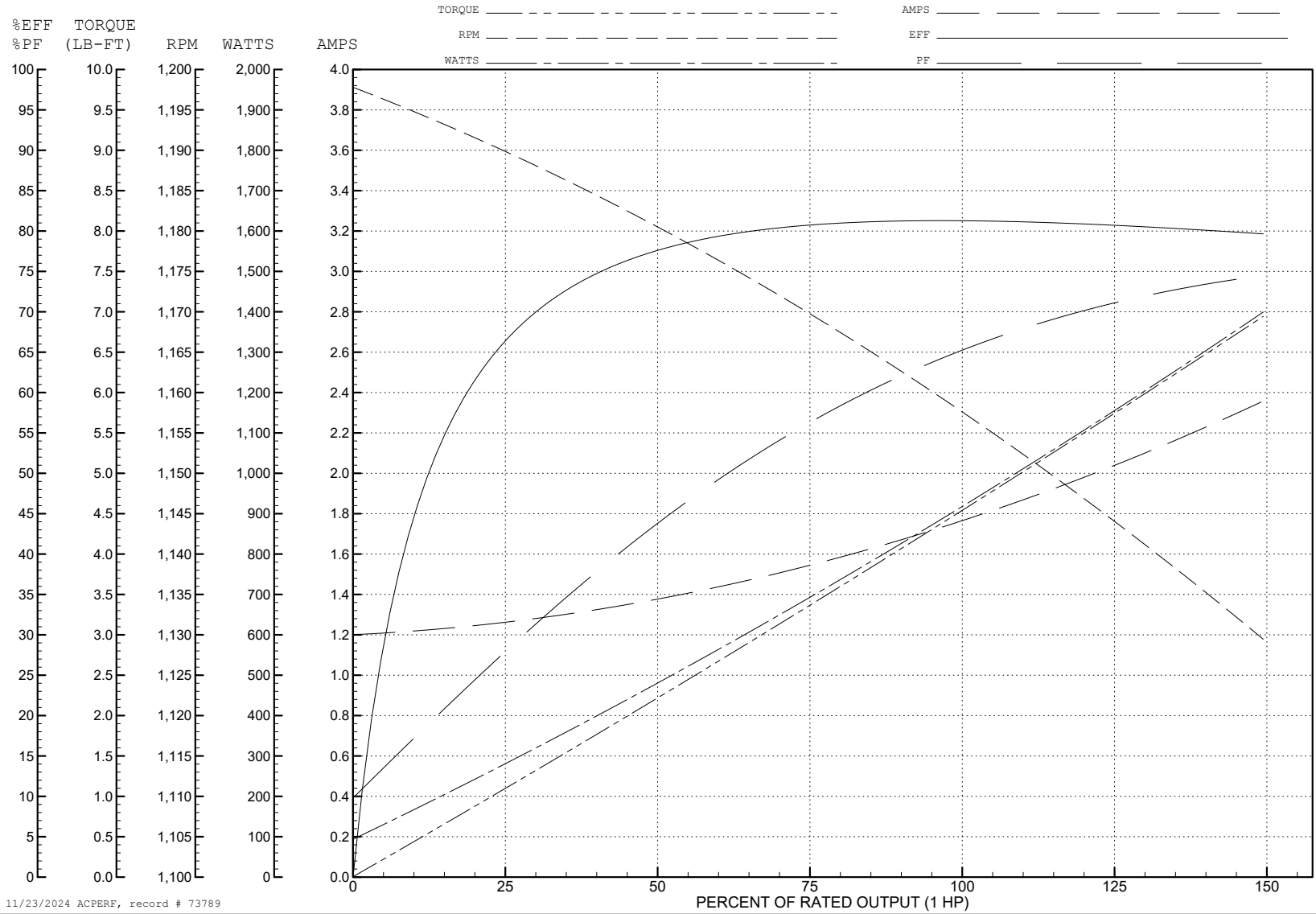
ABB Motors and Mechanical Inc.

WINDING # 35WGM497

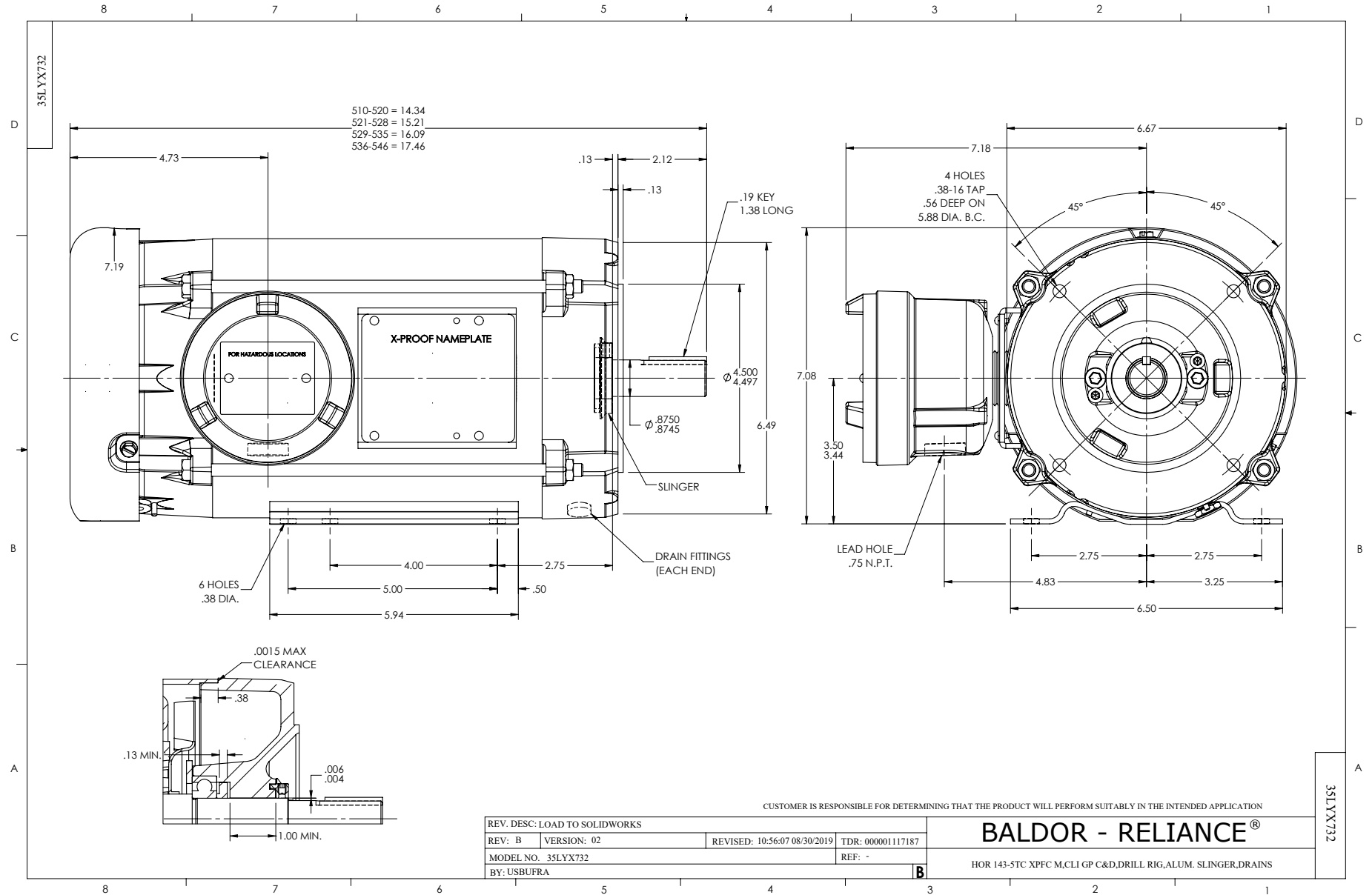
1 HP 3 PH 60 HZ 1158 RPM 460 V 3526M

Typical performance - not guaranteed values.

TORQUES (LB-FT): PO=15.23 PU=11.1 LR=11.9 LRA=10.8



11/23/2024 ACPERF, record # 73789



CD0005



LOW VOLTAGE (2Y)



LINE

HIGH VOLTAGE (1Y)



LINE

NOTES:

1. INTERCHANGE ANY TWO LINE LEADS TO REVERSE ROTATION.
2. OPTIONAL THERMOSTATS ARE PROVIDED WHEN SPECIFIED.
3. ACTUAL NUMBER OF INTERNAL PARALLEL CIRCUITS MAY BE A MULTIPLE OF THOSE SHOWN ABOVE.
4. LEAD COLORS ARE OPTIONAL. LEADS MUST ALWAYS BE NUMBERED AS SHOWN.

CD0005

REV. DESC: REVISE TO SHOW OPTIONAL COLORS			
REV. LTR: E	BY: JLP	REVISED: 01/19/99 10:15	TDR: 0171435
S00000		FILE: AAA00005140	MDL: -
		MTL: -	

BALDOR ELECTRIC Co.

3PH, DV, 9 LEADS