

BALDOR • RELIANCE

Customer information packet

CDRXL050344

.33HP, 1740RPM, 1PH, 60HZ, 56C, 3512L, XPFC, F1

Class - CLI GP C,D

Division - Division I

Specifications

Enclosure	XPFC
Frame	56C
Frame Material	Steel
Frequency	60.00 Hz
Haz Area Class and Group	CLI GP C,D
Haz Area Division	Division I
Motor Letter Type	Cap Start, Induction Run
Output @ Frequency	.330 HP @ 60 HZ
Phase	1
Synchronous Speed @ Frequency	1800 RPM @ 60 HZ
Voltage @ Frequency	115.0 V @ 60 HZ 230.0 V @ 60 HZ
Agency Approvals	UL CSA
Ambient Temperature	40 °C
Auxillary Box	No Auxillary Box
Auxillary Box Lead Termination	None
Base Indicator	Rigid
Bearing Grease Type	Polyrex EM (-20F +300F)
Blower	None
Current @ Voltage	3.200 A @ 230.0 V 6.400 A @ 115.0 V
Design Code	N
Drip Cover	No Drip Cover
Duty Rating	CONT
Efficiency @ 100% Load	54.0 %
Electrically Isolated Bearing	Not Electrically Isolated
Feedback Device	NO FEEDBACK
Front Shaft Indicator	None
Haz Area Temp Code	T3C
Heater Indicator	No Heater
High Voltage Full Load Amps	3.2 a

Part detail

Revision	B
Type	AC
Mech. spec.	35X723
Base	
Status	PRD/A
Elec. spec.	35WGG869
Layout	35LYX723
Eff. date	08-15-2024
CD Diagram	CD0001
Poles	04
Leads	6#18
Proprietary	False
Created date	05-08-2024

Insulation Class	B
Inverter Code	Not Inverter
KVA Code	N
Lifting Lugs	No Lifting Lugs
Locked Bearing Indicator	Locked Bearing
Motor Lead Quantity/Wire Size	6 @ 18 AWG
Motor Lead Termination	Flying Leads
Motor Standards	NEMA
Motor Type	X3512L
Mounting Arrangement	F1
Number of Poles	4
Overall Length	14.28 IN
Power Factor	62
Product Family	General Purpose
Pulley End Bearing Type	Ball
Pulley Face Code	C-Face
Pulley Shaft Indicator	Standard
Rodent Screen	None
Service Factor	1.15
Shaft Diameter	0.625 IN
Shaft Ground Indicator	No Shaft Grounding
Shaft Rotation	Reversible
Shaft Slinger Indicator	No Slinger
Speed	1740 rpm
Speed Code	Single Speed
Starting Method	Direct on line
Thermal Device - Bearing	None
Thermal Device - Winding	Normally Closed Thermostat
Vibration Sensor Indicator	No Vibration Sensor
Winding Thermal 1	None
Winding Thermal 2	None

Nameplate

NP0977XPSL										
NO.							CC			
SER.							TEMP CODE	T3C		
SPEC.	35X723G869									
CAT.NO.	CDRXL050344									
HP	.33									
VOLTS	115/230									
AMPS	6.4/3.2									
RPM	1740					MOTOR WEIGHT		41		
HERTZ	60	PH	1	CL	B	DE BRG	6205			
SER.F.	1.15	DES	N	CODE	N	ODE BRG	6203			
FRAME	56C	GREASE	POLYREX EM							
RATING	40C AMB-CONT									
		NEMA-NOM-EFF				54	PF	62		

Parts list

Part number	Description	Quantity
SA425352	SA 35X723G869	1.000 ea
RA417451	RA 35X723G869	1.000 ea
EC1270A02SP	ELEC CAP, 270-324 MFD, 125V, 1.48D X 3.	1.000 ea
34FN3002B01	EXTERNAL FAN, PLASTIC, .637/.639 HUB W/	1.000 ea
35CB1005A01	CONDUIT BOX,MACH - GROUP "C" MTRS	1.000 ea
11XW1032G06	10-32 X .38, TAPTITE II, HEX WSHR SLTD U	1.000 ea
51XW0832A07	8-32 X .44, TAPTITE II, HEX WSHR SLTD SE	2.000 ea
35EP3700B07	FR ENDPLATE, XPFC - GROUP C, W/ DRAIN	1.000 ea
HW4506A02	BREATHER/DRAIN-EXP PROOF-.125-27 NPTF AI	1.000 ea
HW3022E05	.125 DIA X .500 ROLLED SPRING PIN	1.000 ea
HW5100A03	WAVY WASHER (W1543-017)	1.000 ea
35EP1704A39	PUEP 205 BRG XP GRP C W/SLINGER, DRAIN	1.000 ea
HW4506A02	BREATHER/DRAIN-EXP PROOF-.125-27 NPTF AI	1.000 ea
HW3022E05	.125 DIA X .500 ROLLED SPRING PIN	1.000 ea
HW4001A01	1/4 HX SOC PIPE PLG (F/S) ALLOY STEEL W/	2.000 ea
84XN1032J20	SCREW, SOC 10-32 X 1 1/4"BMH4602	2.000 ea
63XN1032A07	10-32 X 7/16 TRUSS HEAD,TORX SERRATED ZN	2.000 ea
XY3118A12	5/16-18 HEX NUT DIRECTIONAL SERRATION	4.000 ea
51XB1214A16	12-14X1.00 HXWSSLD SERTYB	1.000 ea
35FH4005A44	FH NO GREASER & SPL NOTCH @ 7	1.000 ea
51XW1032A06	10-32 X .38, TAPTITE II, HEX WSHR SLTD S	3.000 ea
35CB1501A01	CONDUIT BOX LID, MACH. - GROUP "C" MTRS	1.000 ea
RM1020A41	O-RING, -150 BUNA-N, .103 CS X 2.862 ID	1.000 ea
HA2071A02	ALUM SLINGER 205 BRG DRILL RIG MOTOR	1.000 ea
80XN1032J04	10-32 X 1/4 SET SCREW, HEX SOC, CUP PT	1.000 ea
HW2501D13	KEY, 3/16 SQ X 1.375	1.000 ea
HA7000A04	KEY RETAINER 0.625 DIA SHAFTS	1.000 ea
85XU0407S04	4X1/4 U DRIVE PIN STAINLESS	6.000 ea
LB1359F	ALUM XP CAUTION LABEL	1.000 ea
HA1025A21	WSHR,FELT .125" THK	1.000 ea
HA6003A52	CLAMP, CAPACITOR, WHITE ZINC PLATED	2.000 ea

51XW0832A07	8-32 X .44, TAPTITE II, HEX WSHR SLTD SE	2.000 ea
MJ1000A02	GREASE, POLYREX EM EXXON	0.050 lb
35FN3002A05SP	EXFN, PLASTIC, 6.376 OD, .638 ID	1.000 ea
51XB1214A16	12-14X1.00 HXWSSLD SERTYB	1.000 ea
MG1025G29	WILKOFAST, 789.229, DARK CHARCOAL GRAY	0.017 ga
SP5055A11	MODEL 35 TYPE L STATIONARY SWITCH WITH L	1.000 ea
HA3104A06	THRUBOLT 5/16-18 X 8.50 OHIO ROD	4.000 ea
LB1624	COMBINED WARNING LABEL, ISO/ANSI PICTOGR	1.000 ea
LC0081	CONNECTION LABEL X	1.000 ea
NP0977XPSL	SS XP UL CSA CC CL-I GP-C&D	1.000 ea
36PA1000	PKG GRP, PRINT PK1016A06	1.000 ea
MN416A01	TAG-INSTAL-MAINT no wire (2500bx)4/22	1.000 ea

AC Induction Motor Performance Data

Record # 101433

Typical performance - not guaranteed values

Winding: 35WGG869-R001		Type: 3512L	Enclosure: XPFC	
Nameplate Data			115 V, 60 Hz: Low Voltage Connection	
Rated Output (HP)	.33		Full Load Torque	1 LB-FT
Volts	115/230		Start Configuration	direct on line
Full Load Amps	6.4/3.2		Breakdown Torque	2.8 LB-FT
R.P.M.	1740		Pull-up Torque	2.3 LB-FT
Hz	60 Phase	1	Locked-rotor Torque	3.6 LB-FT
NEMA Design Code	N KVA Code	N	Starting Current	33.3 A
Service Factor (S.F.)	1.15		No-load Current	5.38 A
NEMA Nom. Eff.	54 Power Factor	62	Line-line Res. @ 25°C	1.88 Ω A Ph 4.22 Ω B Ph
Rating - Duty	40C AMB-CONT		Temp. Rise @ Rated Load	69°C
S.F. Amps			Temp. Rise @ S.F. Load	72°C
			Locked-rotor Power Factor	97.5
			Rotor inertia	0.0866 lb-ft ²

Load Characteristics 115 V, 60 Hz, 0.33 HP

% of Rated Load	25	50	75	100	125	150	S.F.
Power Factor	35	45	54	62	68	74	66
Efficiency	28.3	43	50.1	54.3	55.9	55.4	55.3
Speed	1781	1769	1754	1737	1718	1694	1726
Line amperes	5.39	5.58	5.93	6.39	7.03	7.82	6.77

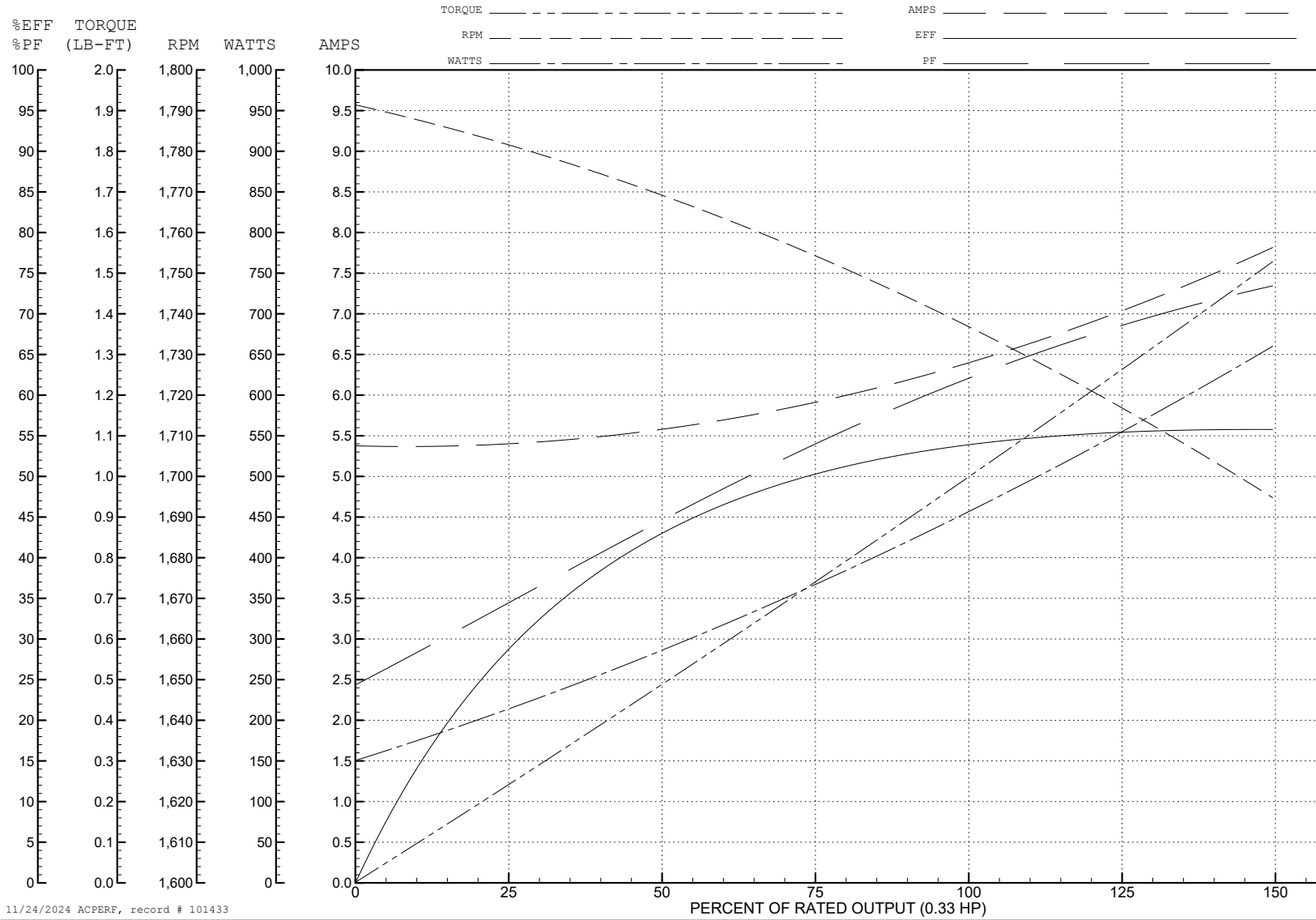
ABB Motors and Mechanical Inc.

WINDING # 35WGG869

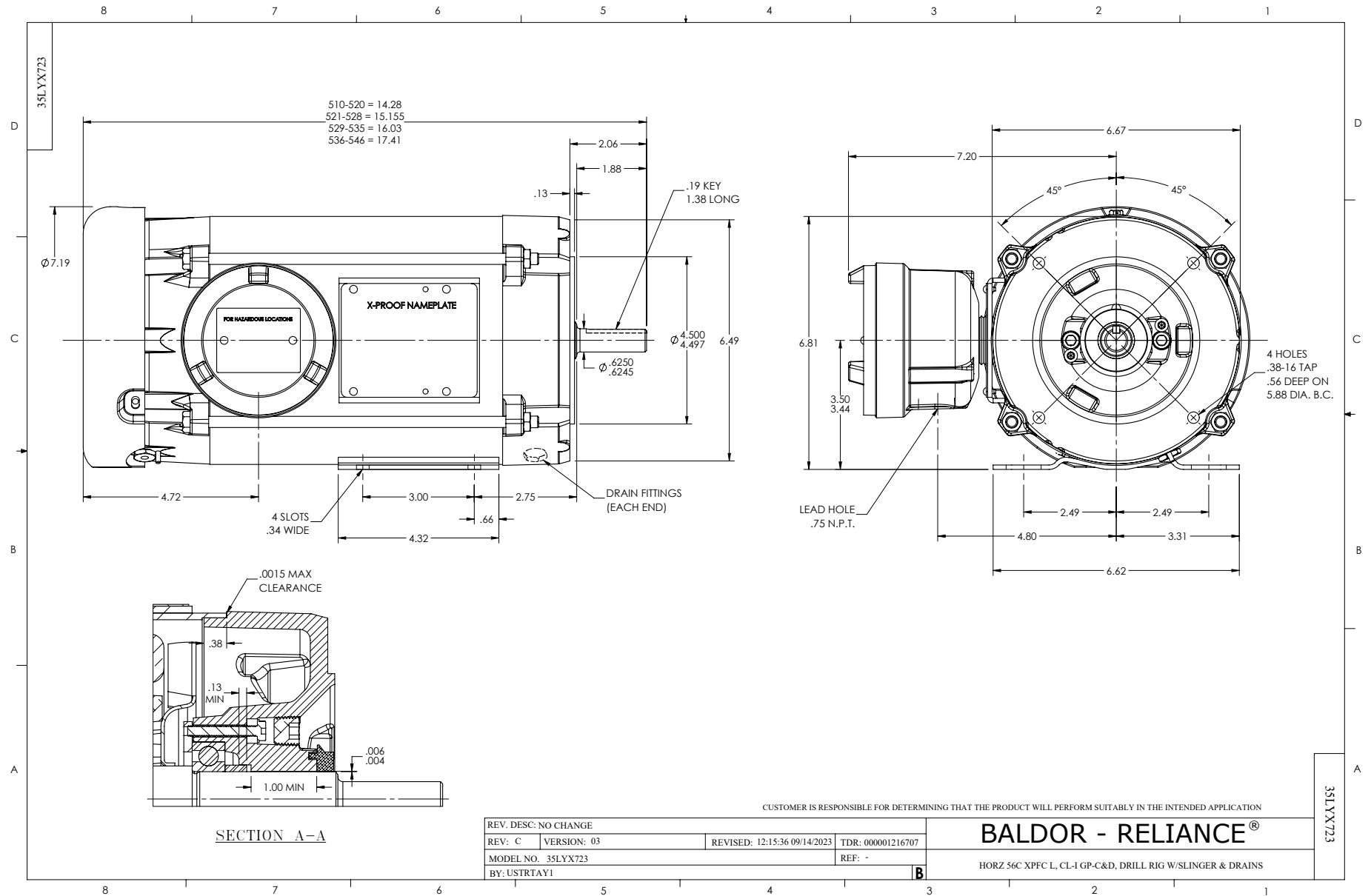
0.33 HP 1 PH 60 HZ 1740 RPM 115 V 3512L

Typical performance - not guaranteed values.

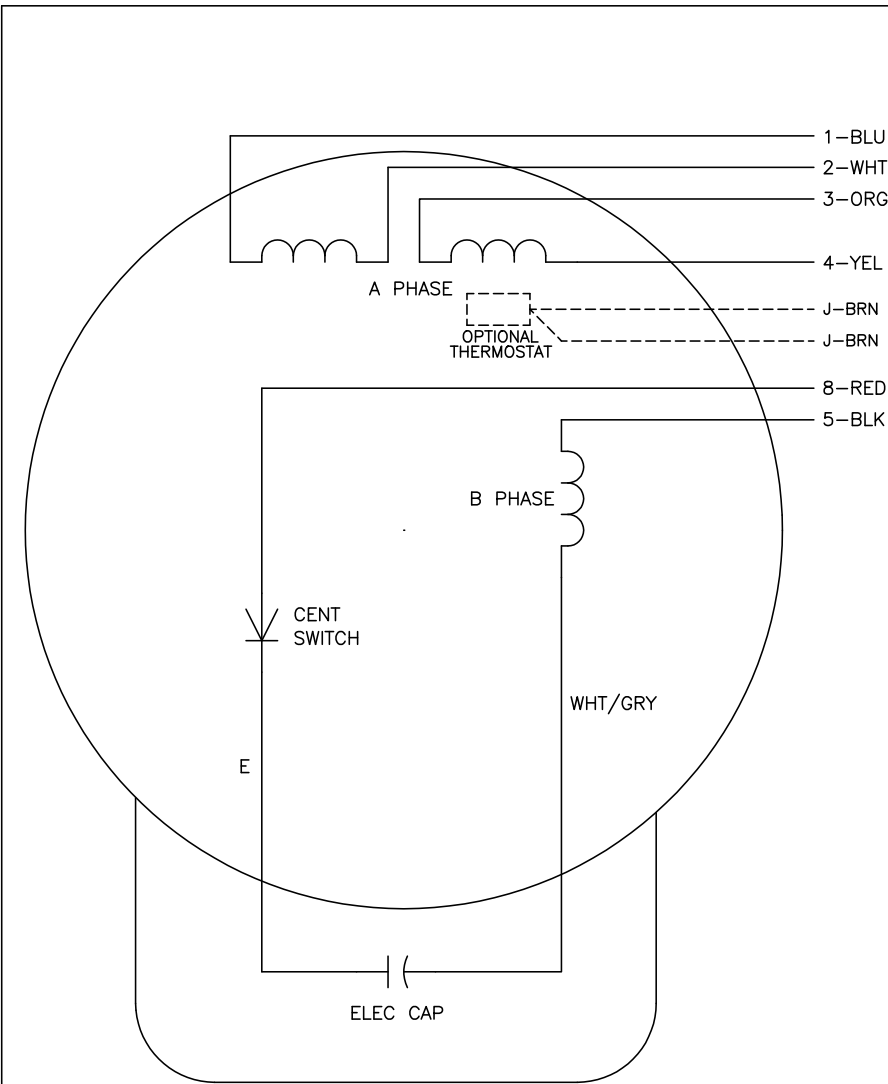
TORQUES (LB-FT): PO=2.8 PU=2.3 LR=3.6 LRA=33.3



11/24/2024 ACPERF, record # 101433



CD0001



	LINE A	LINE B	JOIN
HIGH STD	1	4,5	2,3,8
HIGH OPP	1	4,8	2,3,5
LOW STD	1,3,8	2,4,5	-
LOW OPP	1,3,5	2,4,8	-

NOTES:

1. STANDARD ROTATION IS CCW FACING END OPPOSITE SHAFT EXTENSION.
2. OPTIONAL THERMOSTAT IS PROVIDED WHEN SPECIFIED.
3. MULTIPLE CAPACITORS ARE CONNECTED IN PARALLEL UNLESS OTHERWISE SPECIFIED.
4. LEAD COLORS ARE OPTIONAL. LEADS MUST ALWAYS BE NUMBERED AS SHOWN.

REV. DESC: REVISE TO SHOW OPTIONAL COLORS			
REV. LTR: D	BY: JLP	REVISED: 04/08/99 1:16	TDR: 0178636
100000		FILE: AAA00007405	MDL: -
		MTL: -	

BALDOR ELECTRIC Co.

TYPE L, DV, REV, 6 LEADS

CD0001