

**BALDOR® • RELIANCE™**

---

# Customer information packet

## CDX1875

.75HP, 1750RPM, DC, 182CZ, X3623D, XPFC, F1

Class - CLI GP D; CLII GP F,G

Division -

## Specifications

Armature Voltage	90 V
Base Speed	1750 rpm
Enclosure	XPFC
Field Voltage	100 V
	50 V
Frame	182CZ
Frame Material	Steel
Haz Area Class and Group	CLI GP D; CLII GP F,G
Output Power	0.750 HP
Agency Approvals	CSA
	UL
	UR
Ambient Temperature	40 °C
Armature Current	7.0 a
Armature Inertia	19.385 lb-ft <sup>2</sup>
Base Indicator	Rigid
Bearing Grease Type	Polyrex EM (-20F +300F)
Drip Cover	No Drip Cover
Duty Rating	CONT
Feedback Device	NO FEEDBACK
Field Winding Type	SHUNT
Haz Area Temp Code	T3B
Heater Indicator	No Heater
Lifting Lugs	No Lifting Lugs
Motor Lead Exit	Ko Box
Motor Lead Quantity/Wire Size	2 @ 16 AWG
	4 @ 18 AWG
Motor Lead Termination	Flying Leads
Motor Standards	NEMA
Mounting Arrangement	F1
Overall Length	18.61 IN
Product Family	Hazardous Location Motor

## Part detail

Revision	AV
Type	DC
Mech. spec.	36-5382
Base	
Status	PRD/A
Elec. spec.	36WGZ140
Layout	36LY5382
Eff. date	09-13-2024
CD Diagram	CD0860C01
Poles	00
Leads	
Proprietary	False
Created date	01-01-0001

<b>Pulley End Bearing Type</b>	Sealed Bearing
<b>Service Factor</b>	1.00
<b>Shaft Diameter</b>	0.625 IN
<b>Shaft Extension Location</b>	Pulley End
<b>Shaft Ground Indicator</b>	No Shaft Grounding
<b>Shaft Rotation</b>	Reversible
<b>Shaft Slinger Indicator</b>	No Slinger

**Nameplate**

<b>NP0727XPSL</b>			
<b>NO.</b>			
<b>SER.</b>			
<b>SPEC.</b>	36-5382Z140		
<b>CAT.NO.</b>	CDX1875	<b>T. CODE</b>	T3B
<b>HP</b>	.75	<b>ENCL</b>	XPFC
<b>RPM</b>	1750		
<b>FRAME</b>	182CZ	<b>TYPE</b>	3623D
<b>ARM V</b>	90	<b>ARM A</b>	7
<b>FLD V</b>	100/50	<b>FLD A</b>	.55/1.1
<b>INSUL</b>	A	<b>AMB.</b>	40
<b>DUTY</b>	CONT	<b>SUPPLY</b>	K
<b>BRG/DE</b>	BG6206	<b>BRG/ODE</b>	BG6205
<b>BRUSHES</b>	2/BP5125A01		
<b>BLANK</b>			

## Parts list

Part number	Description	Quantity
SA006702	SA 36-5382Z140	1.000 ea
AA003336	AA 36-5382Z140	1.000 ea
MJ5000A09	EFI KIT #1578 (400 ML CARTRIDGE OF EFI	0.050 ea
35CB3001A02SP	EXPL PROOF CONDUIT BOX, 3/4"PIPE TAP LEA	1.000 ea
11XW1032G06	10-32 X .38, TAPTITE II, HEX WSHR SLTD U	1.000 ea
HW3001B02	BRASS CUP WASHER W/GROUND SYMBOL TAB,	1.000 ea
36EP1707A01	ENDPLATE, MACH	1.000 ea
HW5100A05	WVY WSHR F/205 & 304 BRGS	1.000 ea
36EP1710A01	ENDPLATE, MACH	1.000 ea
10XN2520J24	1/4-20X1.5" HX HD BOLT,GR8,3/4" THD LGTH	2.000 ea
10XN2520A16	1/4-20 X 1 HEX HEAD CAP SCR, ZINC PLATED	2.000 ea
HW1000A25	1/4 SAE FLAT WASHER (FS)	4.000 ea
HW1001A25	LOCKWASHER 1/4, ZINC PLT .493 OD, .255 I	2.000 ea
WD1000H04	HOLL#R4161SFT,INSL.RING,16-14 GA,#10 STU	2.000 ea
XY3816A12	3/8-16 FINISHED NUT W/SERRATIONS	4.000 ea
36FN3000A01SP	EXFN, PLASTIC, 7.00 OD, .912 ID	1.000 ea
51XN1032A20	10-32 X 1 1/4 HX WS SL SR	1.000 ea
XY1032A02	10-32 HEX NUT DIRECTIONAL SERRATION	1.000 ea
36FH4009A05SP	IEC FH,GREASER & 1.38 SHAFT HOLE,W/	1.000 ea
51XW1032A06	10-32 X .38, TAPTITE II, HEX WSHR SLTD S	3.000 ea
HW4030A01	1-1/2" N.P.T. PIPE PLUG W/SQ.HEAD	2.000 ea
35CB3500A01SP	CONDUIT BOX LID, MACH	1.000 ea
51XN2520A16	SCREW, HEX WS SLT, ZN, 1/4-20 X 1.00	4.000 ea
HW2501D13	KEY, 3/16 SQ X 1.375	1.000 ea
HA7000A04	KEY RETAINER 0.625 DIA SHAFTS	1.000 ea
NP0018W	ALUM UL XP CONDUIT BOX NAMEPLATE	1.000 ea
HA6361A01	LIFTING LUG FOR 37, 39 & 40 FRAME ZINC	2.000 ea
MG1025G29	WILKOFASST, 789.229, DARK CHARCOAL GRAY	0.014 ga
85XU0407S04	4X1/4 U DRIVE PIN STAINLESS	6.000 ea
36RK5003A01	ROCKERARM ASSY	1.000 ea
HA3105A07	THRUBOLT 3/8-16 X 11.000	4.000 ea

LB1624	COMBINED WARNING LABEL, ISO/ANSI PICTOGR	1.000 ea
LB1161	LABEL,THERMOSTAT (ROLL LABEL)	1.000 ea
LC0860	CONN. DIAGRAM-DC(SHUNT WOUND MOTOR)	1.000 ea
NP0727XPSL	SS XP DC UL CSA CC CL-I GP-D CL-II GP-F&	1.000 ea
07PA1005	PKG GRP, PRINT PK1156A06	1.000 ea

**DC Motor Performance Data**

Record # 1408

Typical performance - not guaranteed values

<b>Winding: 36WGZ140-R001</b>		<b>Type: 3623D</b>	<b>Enclosure: XPFC</b>
<b>Nameplate Data</b>		<b>General Characteristics</b>	
<b>Rated Output (HP)</b>	0.75	<b>Armature Resistance @ 25°C</b>	0.492 Ω
<b>R.P.M.</b>	1750	<b>Commutating Winding Resistance @ 25°C</b>	0.2924 Ω
<b>Armature Volts</b>	90		
<b>Armature Amps</b>	7	<b>Shunt Winding Resistance @ 25°C</b>	190.87 Ω
<b>Field Volts</b>	100 / 50		
<b>Field Amps</b>	0.55 / 1.1		
<b>Rating - Duty</b>	40C AMB-CONT		
<b>Power Supply Code</b>	K		

**Load Characteristics at 90 Armature Volts, 100 Field Volts, 0.52 Field Amps**

<b>Load Point</b>	<b>1</b>	<b>2</b>	<b>3</b>	<b>4</b>	<b>5</b>	<b>6</b>	<b>7</b>
<b>Armature Amps</b>	0.7	2.4	4.6	6.4	8.7	11.1	13.6
<b>R.P.M.</b>	1720	1694	1659	1631	1612	1606	1599
<b>Torque ( LB-FT )</b>	0	0.75	1.5	2.25	3	3.75	4.5

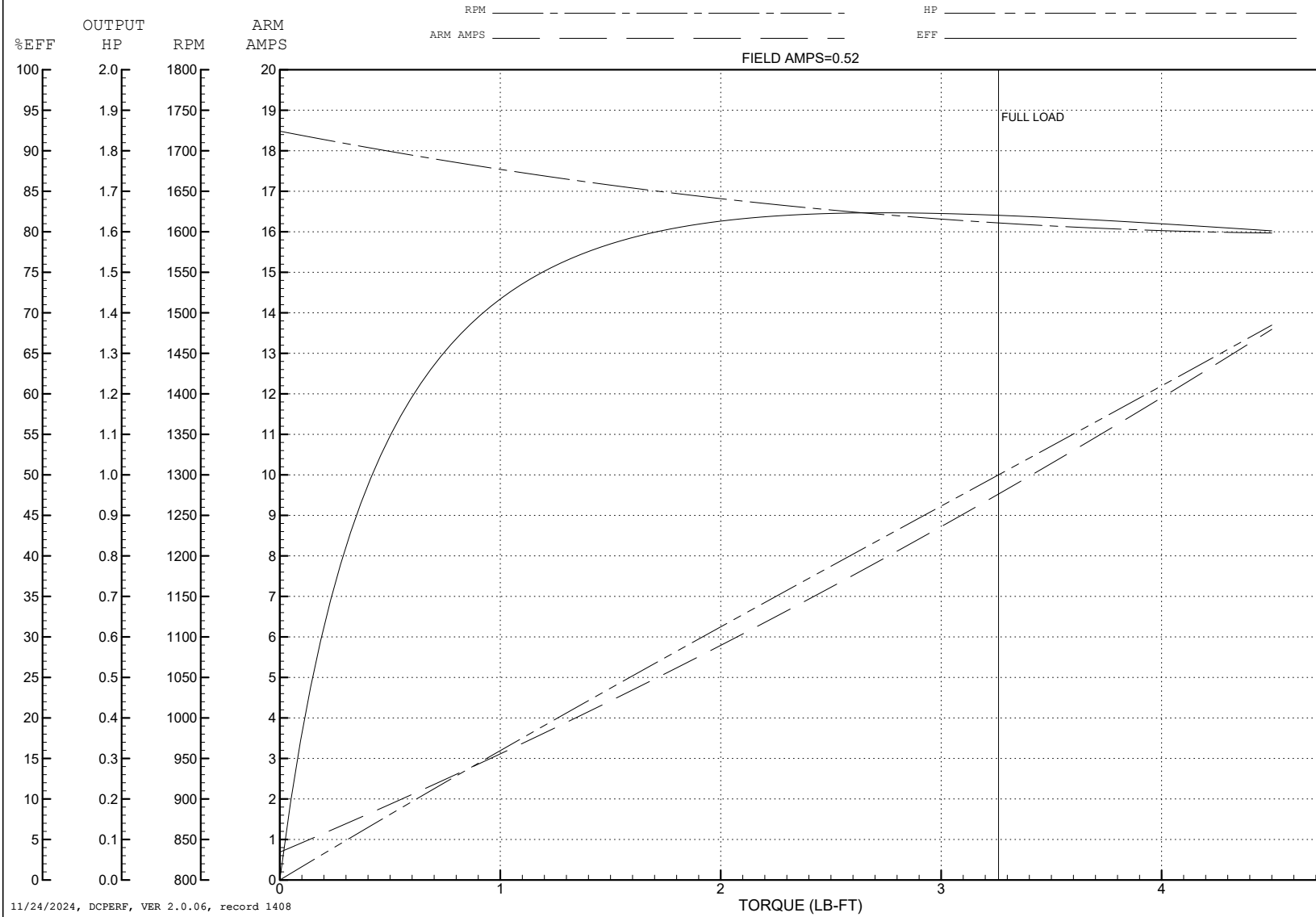
ABB Motors and Mechanical Inc.

WINDING # 36WGZ140

Typical performance - not guaranteed values.

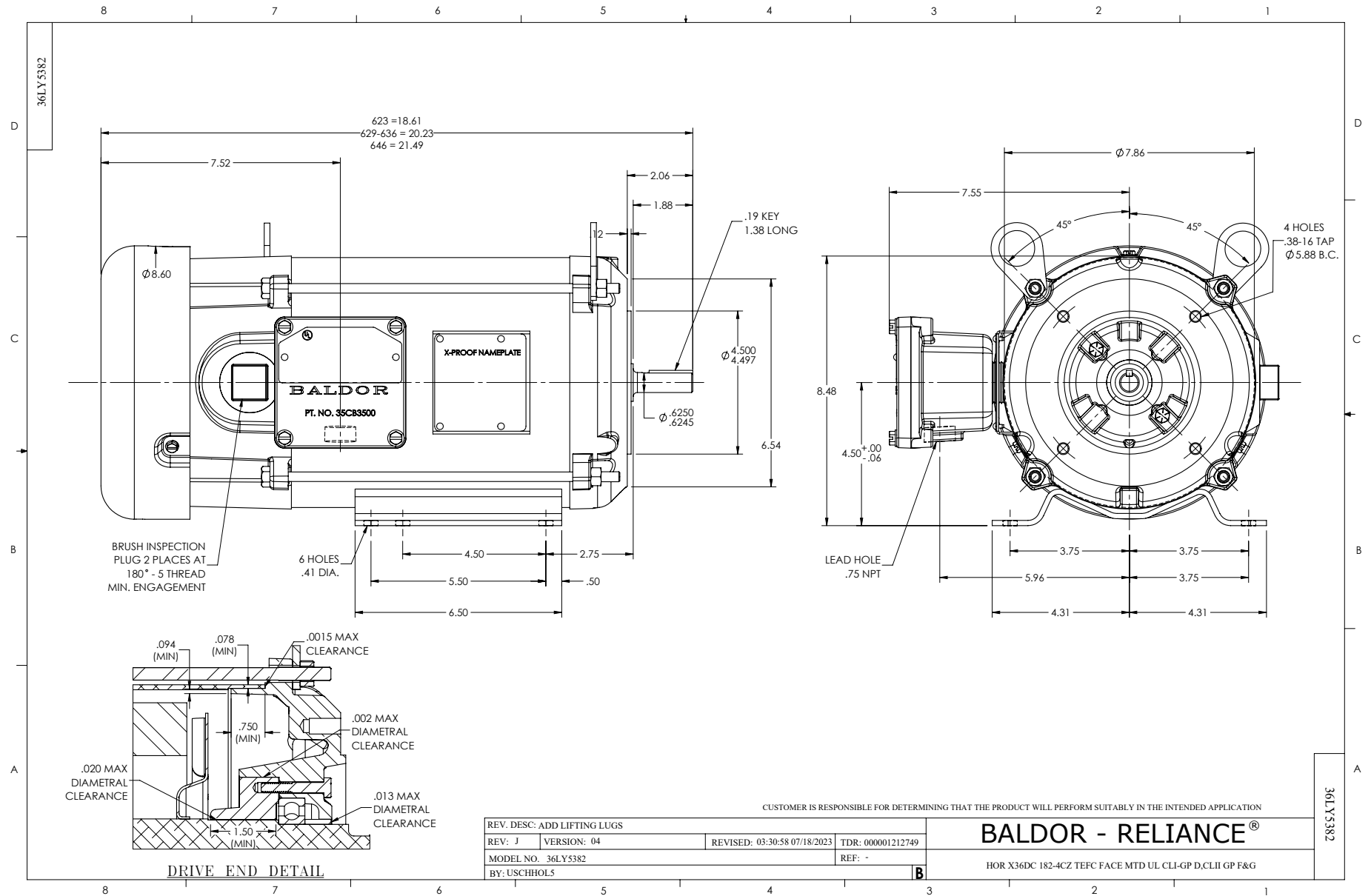
0.75 HP DC 1750 RPM 90 V ARM 100/50 V FLD 3623D

ENCL: XPFC DUTY: CONT CL: A



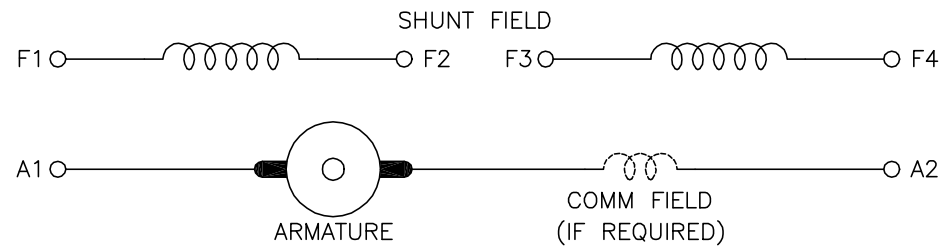
11/24/2024, DCPERF, VER 2.0.06, record 1408





CD0860C01

# SHUNT WOUND



CONNECTION	DIRECTION OF ROTATION			
	CWDE		CCWDE	
	POS TERM (+)	NEG TERM (-)	POS TERM (+)	NEG TERM (-)
HIGH VOLTAGE	A1 F1 CONNECT F2 & F3	A2 F4	A2 F1 CONNECT F2 & F3	A1 F4
LOW VOLTAGE	A1 F1 & F3	A2 F2 & F4	A2 F1 & F3	A1 F2 & F4

NOTES:

1. LIMIT STARTING INRUSH CURRENT TO NOT MORE THAN 3 TIMES RATED AMPERES BY ENERGIZING THE FULL SHUNT FIELD BEFORE BRINGING THE ARMATURE VOLTAGE UP SLOWLY OR IN STEPS.
2. OPTIONAL FIELD REOSTAT MAY BE CONNECTED IN SERIES WITH THE SHUNT FIELD.
3. OPTIONAL THERMOSTAT LEADS ARE MARKED J,J.

REV. DESC: NEW, REPLACE CD0860			
REV. LTR: -	BY: JLP	REVISED: 15:35:22 11/03/2004	TDR: 347796
100098000		FILE: AAA00121477	REF: CD0860C01
		MTL: -	

**BALDOR ELECTRIC Co.**

DC CONNECTION DIAGRAM, SHUNT FIELD, 6 LEAD, DUAL VOLTAGE

CD0860C01