

**BALDOR • RELIANCE**

---

# Customer information packet

## CECP3774T

10HP, 1760RPM, 3PH, 60HZ, 215TC, 0748M, TEFC, F

Class - CLI GP A,B,C,D

Division - Division II

## Specifications

|                                |  |
|--------------------------------|--|
| Enclosure                      | TEFC   |
| Frame                          | 215TC  |
| Frame Material                 | Iron   |
| Frequency                      | 60.00 Hz   |
| Haz Area Class and Group       | CL I GP A,B,C,D  |
| Haz Area Division              | Division II  |
| Motor Letter Type              | Three Phase  |
| Output @ Frequency             | 10.000 HP @ 60 HZ  |
| Phase                          | 3  |
| Synchronous Speed @ Frequency  | 1800 RPM @ 60 HZ   |
| Voltage @ Frequency            | 230.0 V @ 60 HZ<br>460.0 V @ 60 HZ                       |
| Agency Approvals               | CSA EEV<br>NEMA PREMIUM<br>NEMA_PREMIUM<br>UR<br>CCSA US |
| Ambient Temperature            | 40 °C  |
| Auxillary Box                  | No Auxillary Box   |
| Auxillary Box Lead Termination | None   |
| Base Indicator                 | Rigid  |
| Bearing Grease Type            | Polyrex EM (-20F +300F)                                  |
| Blower                         | None   |
| Constant Torque Speed Range    | 1.3  |
| Current @ Voltage              | 25.000 A @ 230.0 V<br>12.500 A @ 460.0 V                 |
| Design Code                    | A  |
| Drip Cover                     | No Drip Cover  |
| Duty Rating                    | CONT   |
| Efficiency @ 100% Load         | 92.4 %   |
| Electrically Isolated Bearing  | Not Electrically Isolated                                |
| Enclosure Modification         | Severe Duty Features                                     |

## Part detail

|              |            |
|--------------|------------|
| Revision     | W          |
| Type         | AC         |
| Mech. spec.  | 07K373     |
| Base         |            |
| Status       | PRD/A      |
| Elec. spec.  | 07WGX776   |
| Layout       | 07LYK373   |
| Eff. date    | 09-14-2022 |
| CD Diagram   | CD0005     |
| Poles        | 04         |
| Leads        | 9#14       |
| Proprietary  | False      |
| Created date | 08-04-2006 |

|                               |                              |
|-------------------------------|------------------------------|
| Feedback Device               | NO FEEDBACK                  |
| Front Face Code               | Standard                     |
| Front Shaft Indicator         | None                         |
| Haz Area Temp Code            | T3C                          |
| Heater Indicator              | No Heater                    |
| High Voltage Full Load Amps   | 12.5 a                       |
| Insulation Class              | F                            |
| Inverter Code                 | Inverter Ready               |
| KVA Code                      | H                            |
| Lifting Lugs                  | Standard Lifting Lugs        |
| Locked Bearing Indicator      | Locked Bearing               |
| Max Speed                     | 2700 rpm                     |
| Motor Lead Exit               | Ko Box                       |
| Motor Lead Quantity/Wire Size | 9 @ 14 AWG                   |
| Motor Lead Termination        | Flying Leads                 |
| Motor Standards               | NEMA                         |
| Motor Type                    | 0748M                        |
| Mounting Arrangement          | F1                           |
| Number of Poles               | 4                            |
| Overall Length                | 20.24 IN                     |
| Power Factor                  | 82                           |
| Product Family                | Chemical Processing (Not DC) |
| Pulley End Bearing Type       | Ball                         |
| Pulley Face Code              | C-Face                       |
| Pulley Shaft Indicator        | Standard                     |
| Rodent Screen                 | None                         |
| Service Factor                | 1.15                         |
| Shaft Diameter                | 1.375 IN                     |
| Shaft Extension Location      | Pulley End                   |
| Shaft Ground Indicator        | No Shaft Grounding           |
| Shaft Rotation                | Reversible                   |
| Shaft Slinger Indicator       | Shaft Slinger                |
| Speed                         | 1760 rpm                     |
| Speed Code                    | Single Speed                 |

|                                   |                     |
|-----------------------------------|---------------------|
| <b>Starting Method</b>            | Direct on line      |
| <b>Thermal Device - Bearing</b>   | None                |
| <b>Thermal Device - Winding</b>   | None                |
| <b>Vibration Sensor Indicator</b> | No Vibration Sensor |
| <b>Winding Thermal 1</b>          | None                |
| <b>Winding Thermal 2</b>          | None                |

**Nameplate**

| <b>NP3257</b>       |              |             |      |            |   |           |   |  |  |
|---------------------|--------------|-------------|------|------------|---|-----------|---|--|--|
| <b>CAT.NO.</b>      | CECP3774T    |             |      |            |   |           |   |  |  |
| <b>SPEC.</b>        | 07K373X776G1 |             |      |            |   |           |   |  |  |
| <b>HP</b>           | 10 TE        |             |      |            |   |           |   |  |  |
| <b>VOLTS</b>        | 230/460      |             |      |            |   |           |   |  |  |
| <b>AMP</b>          | 25/12.5      |             |      |            |   |           |   |  |  |
| <b>RPM</b>          | 1760         |             |      |            |   |           |   |  |  |
| <b>FRAME</b>        | 215TC        | <b>HZ</b>   | 60   | <b>PH</b>  | 3 |           |   |  |  |
| <b>SER.F.</b>       | 1.15         | <b>CODE</b> | H    | <b>DES</b> | A | <b>CL</b> | F |  |  |
| <b>RATING</b>       | 40C AMB-CONT |             |      |            |   |           |   |  |  |
| <b>SN</b>           |              |             |      |            |   |           |   |  |  |
| <b>DE</b>           | 6307         | <b>ODE</b>  | 6307 |            |   |           |   |  |  |
| <b>NEMA-NOM-EFF</b> | 92.4         | <b>PF</b>   | 82   |            |   |           |   |  |  |
| <b>G.MIN.EFF</b>    | 91.0         | <b>CC</b>   | 010A |            |   |           |   |  |  |
| <b>T. CODE</b>      | T3C          | <b>T=</b>   | 160  |            |   |           |   |  |  |

| <b>NP3260</b>      |              |                                |     |
|--------------------|--------------|--------------------------------|-----|
| <b>SPEC.</b>       | 07K373X776G1 |                                |     |
| <b>D.E. BRG.</b>   | 35BC03XP30X  |                                |     |
| <b>O.D.E. BRG.</b> | 35BC03XP30X  |                                |     |
| <b>GREASE</b>      | POLYREX EM   |                                |     |
| <b>RPM MAX</b>     | 2700         | <b>MAX. KVAR</b>               | 1.7 |
| <b>BLANK</b>       |              |                                |     |
| <b>INV.TYPE</b>    | PWM          |                                |     |
| <b>T=</b>          | 160          |                                |     |
| <b>C HP FR</b>     | 60           | <b>C HP TO</b>                 | 90  |
| <b>CT HZ FROM</b>  | 1.3          | <b>CT HZ TO</b>                | 60  |
| <b>VT HZ FROM</b>  | -0           | <b>VT HZ TO</b>                | 60  |
| <b>HTR-VOLTS</b>   |              | <b>HTR-AMPS</b>                |     |
| <b>HTR-WATTS</b>   |              | <b>MAX. SPACE HEATER TEMP.</b> |     |

## Parts list

| Part number  | Description                              | Quantity |
|--------------|--|----------|
| SA147420     | SA 07K373X776G1                          | 1.000 ea |
| RA136468     | RA 07K373X776G1                          | 1.000 ea |
| 37FN3002C01  | EXFN, PLASTIC, 6.00 OD, 1.155 ID         | 1.000 ea |
| HW3201A05    | 3/8-16 EYEBOLT                           | 1.000 ea |
| 09CB1001A03G | CONDUIT BOX, MACH GRAY                   | 1.000 ea |
| RM1017       | LEAD SEPERATOR GASKET MODEL 307 1/8" THK | 1.000 ea |
| 19XW2520A16  | SCREW,1/4-20X1 TAPTITE-II OR ROLOC 91    | 2.000 ea |
| 11XW1032G06  | 10-32 X .38, TAPTITE II, HEX WSHR SLTD U | 1.000 ea |
| HW3001B01    | BRASS CUP WASHER, FOR #10 SCREW          | 1.000 ea |
| 10XN2520S06  | 1/4 20X3/8 HX HD CAP S.S.                | 1.000 ea |
| WD1000B16    | T&B CX70TN OR L70P TERMINAL LUG          | 1.000 ea |
| 37EP1101C43G | TEFC 307 BRG, GRSR,RELIEF,.25-20 FH TAPS | 1.000 ea |
| HW4500A01    | 1641B(ALEMITE)400 UNIV, GREASE FITT      | 1.000 ea |
| HA4051A00    | PLASTIC CAP FOR GREASE FITTING           | 1.000 ea |
| HW4500A17    | 317400 ALEMITE GREASE RELIEF             | 1.000 ea |
| HA4054       | SHORT T-DRAIN FITTING, .125" N.P.T.      | 1.000 ea |
| HW5100A08    | W3118-035 WVY WSHR (WB)                  | 1.000 ea |
| 37EP1300A41G | FACE MTD E.P. ENCL 307 BRG. 213-5TC S.P. | 1.000 ea |
| HW4500A01    | 1641B(ALEMITE)400 UNIV, GREASE FITT      | 1.000 ea |
| HA4051A00    | PLASTIC CAP FOR GREASE FITTING           | 1.000 ea |
| HW4500A17    | 317400 ALEMITE GREASE RELIEF             | 1.000 ea |
| 10XN2520A30  | HEX HD CAP SCREW-STD THD-.25 X 20 THD PE | 4.000 ea |
| HA4054       | SHORT T-DRAIN FITTING, .125" N.P.T.      | 1.000 ea |
| XY3118A12    | 5/16-18 HEX NUT DIRECTIONAL SERRATION    | 4.000 ea |
| 51XB1214A20  | 12-14X1.25 HXWSSLD SERTYB                | 1.000 ea |
| 07FH1001A01G | SPL FAN HOUSING, 307, W/GREASER, GRAY EP | 1.000 ea |
| 10XN2520A28  | 1/4-20X 1 3/4 HEX HD                     | 3.000 ea |
| WD4100A02    | DP-1000 HEYCO PLUG OR 62MP1000 MICRO PL  | 1.000 ea |
| 09CB1504A01G | LIPPED CONDUIT BOX LID, MACH GRAY EPOXY  | 1.000 ea |
| 09GS1001A01  | GASKET, BOX LID, 1/8 THICK BLACK NEOPREN | 1.000 ea |
| 10XN2520A12  | 1/4-20 X 3/4 HEX HEAD CAP                | 2.000 ea |

|             |   |          |
|-------------|---|----------|
| HW1001A25   | LOCKWASHER 1/4, ZINC PLT .493 OD, .255 I  | 2.000 ea |
| HA1005A07   | SLINGER, OD 2.25, ID 1.344, 307 BRG       | 1.000 ea |
| HW4600B33   | V-RING SLINGER 1.375 X 1.890 X .35 VITON  | 1.000 ea |
| HW2501F21   | KEY, 5/16 SQ X 2.375                      | 1.000 ea |
| HA7000A02   | KEY RETAINER RING, 1 1/8 DIA, 1 3/8 DIA   | 1.000 ea |
| MJ5001A27   | 32220KN GRAY SEALER *MIN BUY 4 QTS=1GAL   | 0.001 qt |
| 85XU0407S04 | 4X1/4 U DRIVE PIN STAINLESS               | 2.000 ea |
| LB1624      | COMBINED WARNING LABEL, ISO/ANSI PICTOGR  | 1.000 ea |
| LB1002N     | LABEL,MARINE DUTY (ON ROLLS)              | 1.000 ea |
| MJ1000A02   | GREASE, POLYREX EM EXXON                  | 0.050 lb |
| HA3104A32   | THRUBOLT- 5/16-18 X12.750                 | 4.000 ea |
| MG1025N19   | WILKOFASST, 778.50, RELIANCE BLUE-GREEN 8 | 0.036 ga |
| LC0005      | CONN.DIA.,TY M,9-LD,DUAL VOLT,REVERSING   | 1.000 ea |
| LB1449      | DIV-2/NEC WARNING LABEL                   | 1.000 ea |
| NP3257      | SS CP SUPER-E DIV-2 UL CSA-C US EEV PREM  | 1.000 ea |
| NP3260      | SS CP SUPER-E AUX DATA INFORMATION        | 1.000 ea |
| 85XU0407S04 | 4X1/4 U DRIVE PIN STAINLESS               | 2.000 ea |
| 07PA1011    | PKG GRP, 07 CAST IRON PK1181              | 1.000 ea |
| MN416A01    | TAG-INSTAL-MAINT no wire (2500bx)4/22     | 1.000 ea |



**AC Induction Motor Performance Data**

Record # 25097

Typical performance - not guaranteed values

| Winding: 07WGX776-R016 |              | Type: 0748M         |  | Enclosure: TEFC         |         |
|------------------------|--------------|---------------------|--|-------------------------|---------|
| <b>Nameplate Data</b>  |              |                     | <b>460 V, 60 Hz:<br/>High Voltage Connection</b> |                         |         |
| Rated Output (HP)      | 10           | Full Load Torque    | 29.8 LB-FT                                       |                         |         |
| Volts                  | 230/460      | Start Configuration | direct on line                                   |                         |         |
| Full Load Amps         | 25/12.5      | Breakdown Torque    | 87 LB-FT   |                         |         |
| R.P.M.                 | 1760         | Pull-up Torque      | 51.9 LB-FT                                       |                         |         |
| Hz                     | 60 Phase     | 3                   | Locked-rotor Torque                              | 57.5 LB-FT              |         |
| NEMA Design Code       | A            | KVA Code            | H  | Starting Current        | 88.5 A  |
| Service Factor (S.F.)  | 1.15         | No-load Current     | 5.12 A   |                         |         |
| NEMA Nom. Eff.         | 92.4         | Power Factor        | 82   | Line-line Res. @ 25°C   | 0.973 Ω |
| Rating - Duty          | 40C AMB-CONT |                     | Temp. Rise @ Rated Load                          | 60°C                    |         |
| S.F. Amps              |              |                     | Temp. Rise @ S.F. Load                           | 76°C                    |         |
|                        |              |                     | Locked-rotor Power Factor                        | 35                      |         |
|                        |              |                     | Rotor inertia                                    | 1.18 LB-FT <sup>2</sup> |         |

**Load Characteristics 460 V, 60 Hz, 10 HP**

| % of Rated Load | 25   | 50   | 75   | 100  | 125  | 150  | S.F. |
|-----------------|------|------|------|------|------|------|------|
| Power Factor    | 44   | 67   | 78   | 82   | 84   | 85   | 83   |
| Efficiency      | 90   | 92.9 | 93.1 | 92.5 | 91.4 | 90.1 | 91.8 |
| Speed           | 1790 | 1781 | 1771 | 1762 | 1750 | 1739 | 1755 |
| Line amperes    | 5.84 | 7.52 | 9.75 | 12.3 | 15.2 | 18.3 | 14   |

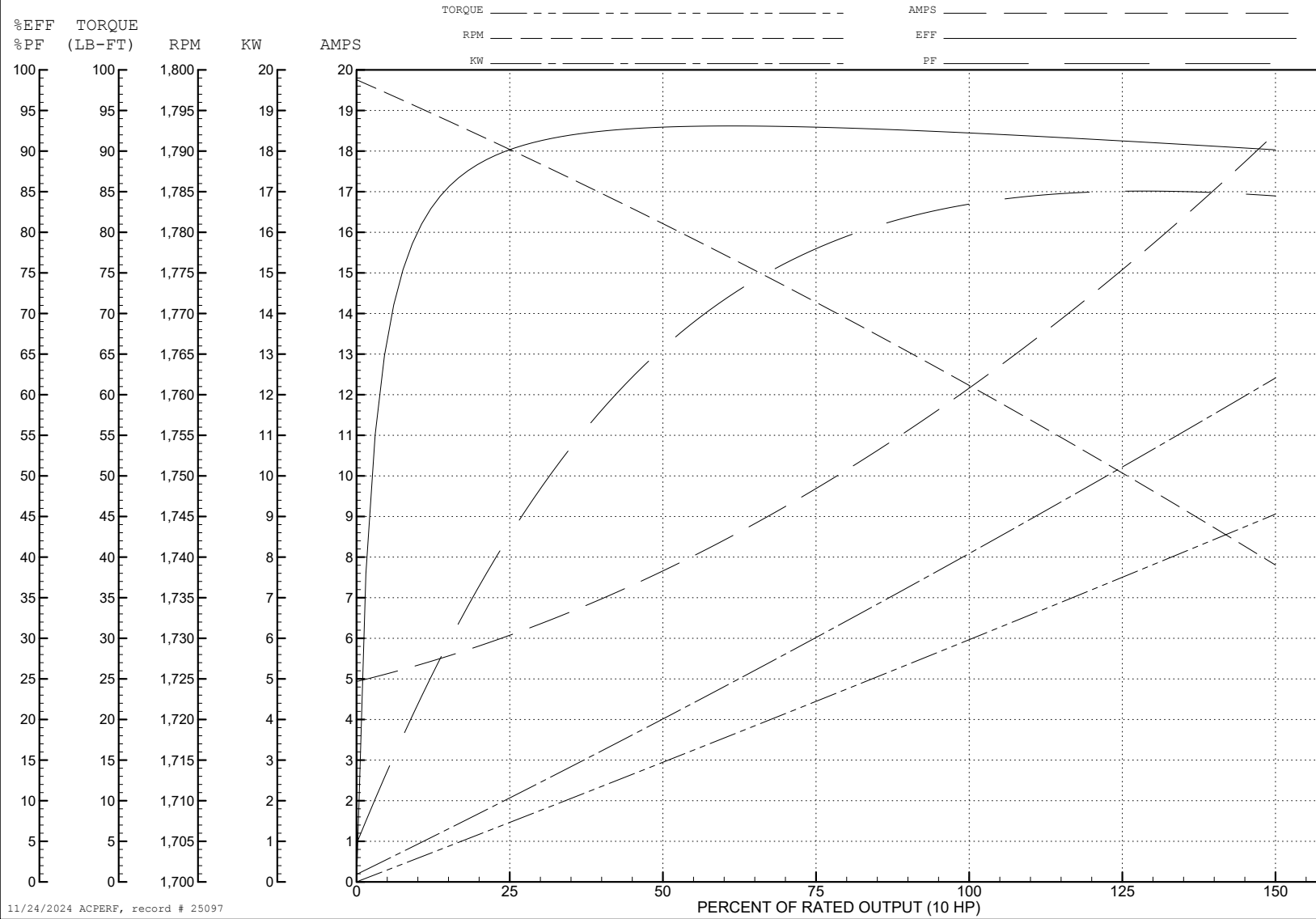
ABB Motors and Mechanical Inc.

WINDING # 07WGX776

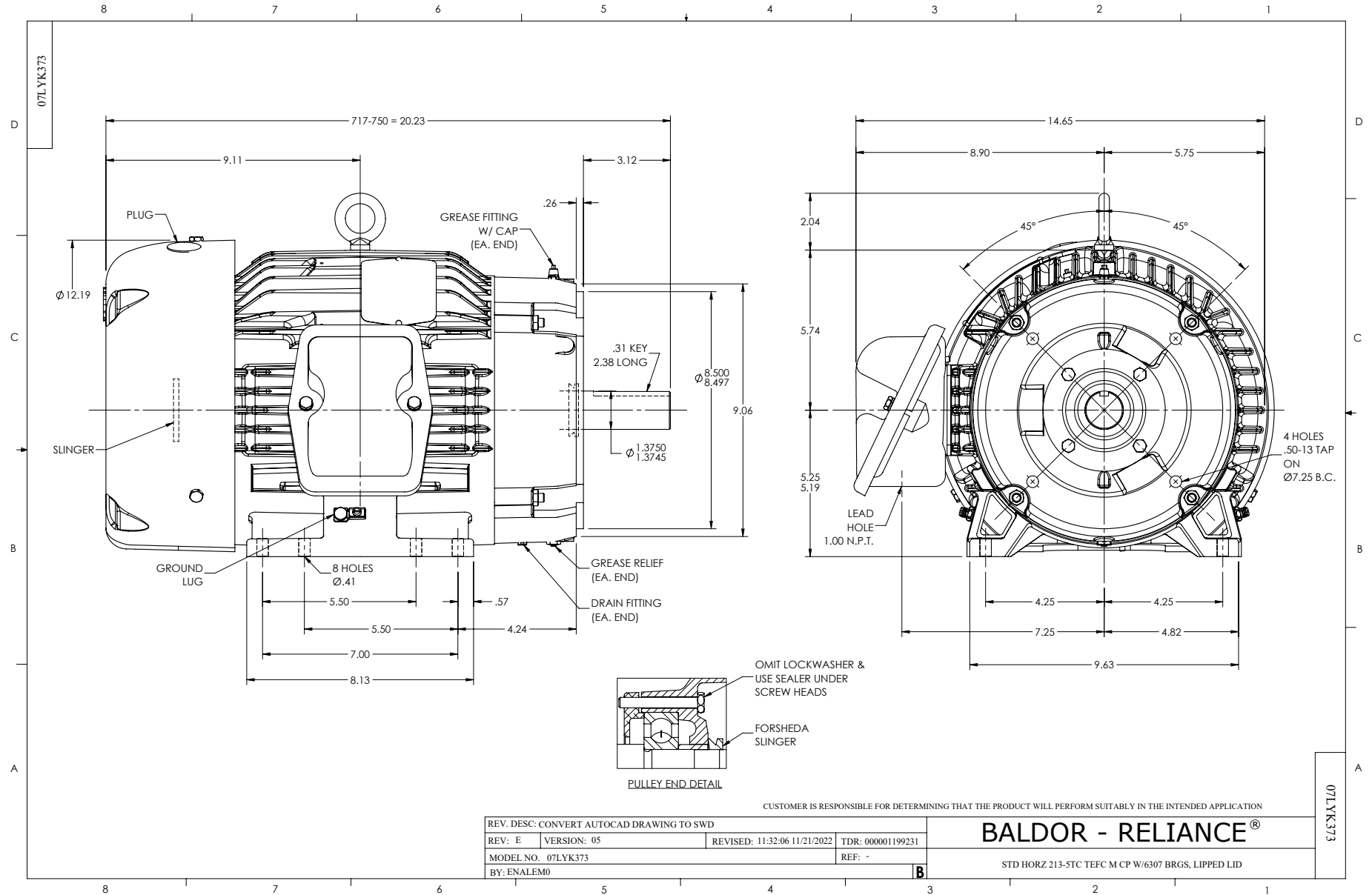
Typical performance - not guaranteed values.

10 HP 3 PH 60 HZ 1760 RPM 460 V 0748M

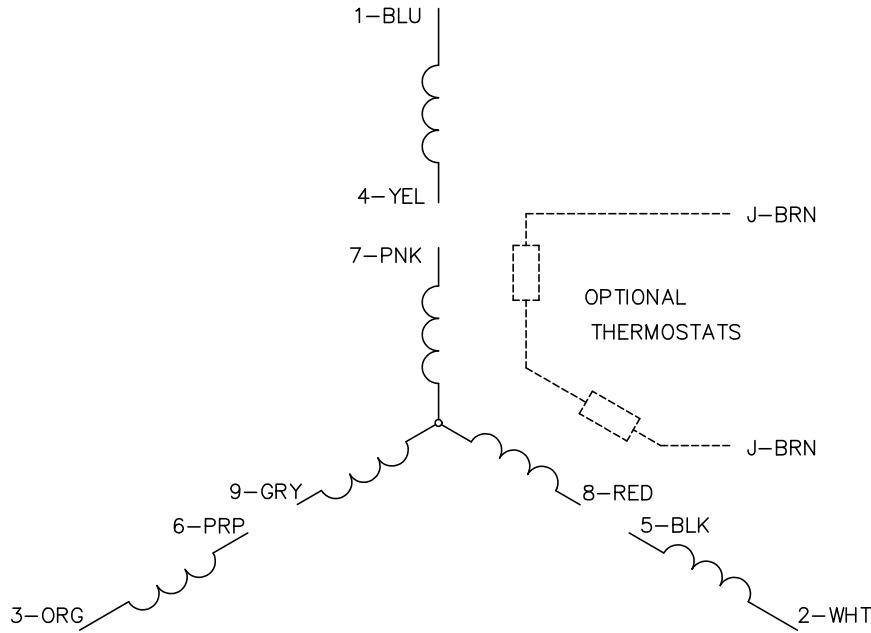
TORQUES (LB-FT): PO=87 PU=51.9 LR=57.5 LRA=88.5



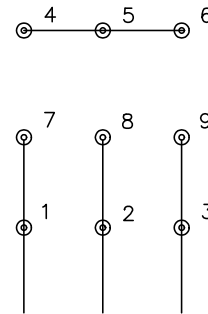
11/24/2024 ACPERF, record # 25097



CD0005

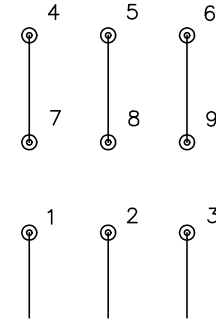


LOW VOLTAGE  
(2Y)



LINE

HIGH VOLTAGE  
(1Y)



LINE

NOTES:

1. INTERCHANGE ANY TWO LINE LEADS TO REVERSE ROTATION.
2. OPTIONAL THERMOSTATS ARE PROVIDED WHEN SPECIFIED.
3. ACTUAL NUMBER OF INTERNAL PARALLEL CIRCUITS MAY BE A MULTIPLE OF THOSE SHOWN ABOVE.
4. LEAD COLORS ARE OPTIONAL. LEADS MUST ALWAYS BE NUMBERED AS SHOWN.

CD0005

|   |         |                         |              |
|---|---------|-------------------------|--------------|
| REV. DESC: REVISE TO SHOW OPTIONAL COLORS |         |                         |              |
| REV. LTR: E                               | BY: JLP | REVISED: 01/19/99 10:15 | TDR: 0171435 |
| S00000                                    |         | FILE: AAA00005140       | MDL: -       |
|   |         | MTL: -                  |              |

**BALDOR ELECTRIC Co.**

3PH, DV, 9 LEADS