

**BALDOR • RELIANCE**

---

# Customer information packet

## CEL11310

1HP, 1750RPM, 1PH, 60HZ, 56C, 3528LC, OPEN, F1

Class - None

Division - Not Applicable

Copyright © All product information within this document is subject to ABB Motors and Mechanical Inc. copyright © protection, unless otherwise noted.

11/24/2024 11:58:17 AM

## Specifications

|                                |  |
|--------------------------------|--|
| Enclosure                      | OPEN                                   |
| Frame                          | 56C                                    |
| Frame Material                 | Steel                                  |
| Frequency                      | 60.00 Hz                               |
| Haz Area Class and Group       | None                                   |
| Haz Area Division              | Not Applicable                         |
| Motor Letter Type              | Cap Start, Cap Run                     |
| Output @ Frequency             | 1.000 HP @ 60 HZ                       |
| Phase                          | 1                                      |
| Synchronous Speed @ Frequency  | 1800 RPM @ 60 HZ                       |
| Voltage @ Frequency            | 115.0 V @ 60 HZ<br>230.0 V @ 60 HZ     |
| Agency Approvals               | CURUSEEV                               |
| Ambient Temperature            | 40 °C                                  |
| Auxillary Box                  | No Auxillary Box                       |
| Auxillary Box Lead Termination | None                                   |
| Base Indicator                 | Rigid                                  |
| Bearing Grease Type            | Polyrex EM (-20F +300F)                |
| Blower                         | None                                   |
| Current @ Voltage              | 4.400 A @ 230.0 V<br>8.800 A @ 115.0 V |
| Design Code                    | L                                      |
| Drip Cover                     | No Drip Cover                          |
| Duty Rating                    | CONT                                   |
| Efficiency @ 100% Load         | 82.6 %                                 |
| Electrically Isolated Bearing  | Not Electrically Isolated              |
| Feedback Device                | NO FEEDBACK                            |
| Front Shaft Indicator          | None                                   |
| Heater Indicator               | No Heater                              |
| High Voltage Full Load Amps    | 4.4 a                                  |
| Insulation Class               | F                                      |
| Inverter Code                  | Not Inverter                           |

## Part detail

|              |            |
|--------------|------------|
| Revision     | C          |
| Type         | AC         |
| Mech. spec.  | 35E021     |
| Base         |            |
| Status       | PRD/A      |
| Elec. spec.  | 35WGG109   |
| Layout       | 35LYE021   |
| Eff. date    | 07-02-2024 |
| CD Diagram   | CD0055     |
| Poles        | 04         |
| Leads        | 6#18       |
| Proprietary  | False      |
| Created date | 08-01-2022 |

|                                      |                     |
|--------------------------------------|---------------------|
| <b>KVA Code</b>                      | K                   |
| <b>Lifting Lugs</b>                  | No Lifting Lugs     |
| <b>Locked Bearing Indicator</b>      | Locked Bearing      |
| <b>Motor Lead Quantity/Wire Size</b> | 6 @ 18 AWG          |
| <b>Motor Lead Termination</b>        | Flying Leads        |
| <b>Motor Standards</b>               | NEMA                |
| <b>Motor Type</b>                    | 3528LC              |
| <b>Mounting Arrangement</b>          | F1                  |
| <b>Number of Poles</b>               | 4                   |
| <b>Overall Length</b>                | 12.06 IN            |
| <b>Power Factor</b>                  | 89                  |
| <b>Product Family</b>                | General Purpose     |
| <b>Pulley End Bearing Type</b>       | Ball                |
| <b>Pulley Face Code</b>              | C-Face              |
| <b>Pulley Shaft Indicator</b>        | Standard            |
| <b>Rodent Screen</b>                 | None                |
| <b>Service Factor</b>                | 1.15                |
| <b>Shaft Diameter</b>                | 0.625 IN            |
| <b>Shaft Ground Indicator</b>        | No Shaft Grounding  |
| <b>Shaft Rotation</b>                | Reversible          |
| <b>Shaft Slinger Indicator</b>       | No Slinger          |
| <b>Speed</b>                         | 1750 rpm            |
| <b>Speed Code</b>                    | Single Speed        |
| <b>Starting Method</b>               | Direct on line      |
| <b>Thermal Device - Bearing</b>      | None                |
| <b>Thermal Device - Winding</b>      | None                |
| <b>Vibration Sensor Indicator</b>    | No Vibration Sensor |
| <b>Winding Thermal 1</b>             | None                |
| <b>Winding Thermal 2</b>             | None                |

**Nameplate**

| <b>NP3155L</b>        |              |             |            |            |   |           |   |  |  |
|-----------------------|--------------|-------------|------------|------------|---|-----------|---|--|--|
| <b>CAT.NO.</b>        | CEL11310     |             |            |            |   |           |   |  |  |
| <b>SPEC.</b>          | 35E021G109   |             |            |            |   |           |   |  |  |
| <b>HP</b>             | 1            |             |            |            |   |           |   |  |  |
| <b>VOLTS</b>          | 115/230      |             |            |            |   |           |   |  |  |
| <b>AMP</b>            | 8.8/4.4      |             |            |            |   |           |   |  |  |
| <b>RPM</b>            | 1750         |             |            |            |   |           |   |  |  |
| <b>FRAME</b>          | 56C          |             | <b>HZ</b>  | 60         |   | <b>PH</b> | 1 |  |  |
| <b>SER.F.</b>         | 1.15         | <b>CODE</b> | K          | <b>DES</b> | L | <b>CL</b> | F |  |  |
| <b>F.L. AVG. EFF.</b> | 82.6         | <b>PF</b>   | 89         |            |   |           |   |  |  |
| <b>RATING</b>         | 40C AMB-CONT |             |            |            |   |           |   |  |  |
| <b>CC</b>             |              |             |            |            |   |           |   |  |  |
| <b>DE</b>             | 6205         |             | <b>ODE</b> | 6203       |   |           |   |  |  |
| <b>ENCL</b>           | OPEN         | <b>SN</b>   |            |            |   |           |   |  |  |

## Parts list

| Part number | Description                              | Quantity |
|-------------|--|----------|
| SA407289    | SA 35E021G109                            | 1.000 ea |
| RA398788    | RA 35E021G109                            | 1.000 ea |
| OC3040F18SP | 7YL OIL CAP 40MFD/370V                   | 1.000 ea |
| EC1540A06SP | ELEC CAP, 540-648 MFD, 125V, 2.06D X 4.  | 1.000 ea |
| NS2512A01   | INSULATOR, CONDUIT BOX X                 | 1.000 ea |
| 35CB3007    | 35 CB CASTING W/.88 DIA. LEAD HOLE       | 1.000 ea |
| 51XB1016A07 | 10-16 X 7/16 HXWSSLD SERTYB              | 2.000 ea |
| 11XW1032G06 | 10-32 X .38, TAPTITE II, HEX WSHR SLTD U | 1.000 ea |
| 35EP3209G00 | MASTER ODE,203 BRG                       | 1.000 ea |
| 51XW0832A07 | 8-32 X .44, TAPTITE II, HEX WSHR SLTD SE | 2.000 ea |
| 35CB3801    | CAPACITOR COVER, CAST                    | 1.000 ea |
| HA7010      | CAPACITOR RETENTION CLAMP                | 1.000 ea |
| NS2501A02   | INSULATOR, CAPACITOR BOX                 | 1.000 ea |
| 51XB1016A08 | 10-16X 1/2HXWSSLD SERTYB                 | 2.000 ea |
| HW5100A03   | WAVY WASHER (W1543-017)                  | 1.000 ea |
| 35EP3402C00 | MASTER DE,205 BRG,OPEN                   | 1.000 ea |
| 35AD2000    | AIR BAFFLE - GALVANNEAL                  | 1.000 ea |
| 60XW0632A06 | 6-32 X 3/8 TORX HEAD SCREW TAPTITE II    | 4.000 ea |
| 51XN1032A20 | 10-32 X 1 1/4 HX WS SL SR                | 2.000 ea |
| 35CB4521    | 35 LIPPED CB LID (GALV & PHOSPH)         | 1.000 ea |
| 51XW0832A07 | 8-32 X .44, TAPTITE II, HEX WSHR SLTD SE | 4.000 ea |
| HW2501D13   | KEY, 3/16 SQ X 1.375                     | 1.000 ea |
| HA7000A04   | KEY RETAINER 0.625 DIA SHAFTS            | 1.000 ea |
| 85XU0407S04 | 4X1/4 U DRIVE PIN STAINLESS              | 2.000 ea |
| WD1000A15   | 3-520132-2 AMP FLAG (4M/RL NON-CANC/NON- | 4.000 ea |
| MJ1000A02   | GREASE, POLYREX EM EXXON                 | 0.050 lb |
| MG1050Y01   | CELEROL BALDOR GOLD *** NLA IN 5 GALLON  | 0.017 ga |
| HA3100A15   | THRUBOLT 10-32 X 8.375                   | 4.000 ea |
| SP5181A01   | MODEL 35 LC TORQ STAT SWITCH LEAD ASSY   | 1.000 ea |
| LC0001A01   | CONN LABEL / WARNING LABEL (LC0001 / LB1 | 1.000 ea |
| NP3155L     | ALUM SUPER-E UL CC "SEMS"                | 1.000 ea |

|            |                                       |          |
|------------|---------------------------------------|----------|
| 35PA1066   | PKG GRP, PRINT PK1008A06              | 1.000 ea |
| MN416A01   | TAG-INSTAL-MAINT no wire (2500bx)4/22 | 1.000 ea |
| FE-0000001 | ZRTG FE ASSEMBLY                      | 1.000 ea |
| PE-0000011 | ZRTG PE ASSEMBLY                      | 1.000 ea |

**AC Induction Motor Performance Data**

Record # 108226

Typical performance - not guaranteed values

| Winding: 35WGG109-R001 |                   | Type: 3528LC            | Enclosure: OPEN                                 |  |
|------------------------|-------------------|-------------------------|---|--|
| <b>Nameplate Data</b>  |                   |                         | <b>115 V, 60 Hz:<br/>Low Voltage Connection</b> |  |
| Rated Output (HP)      | 1                 | Full Load Torque        | 3.006 LB-FT                                     |  |
| Volts                  | 115/230           | Start Configuration     | direct on line                                  |  |
| Full Load Amps         | 8.8/4.4           | Breakdown Torque        | 9.12 LB-FT                                      |  |
| R.P.M.                 | 1750              | Pull-up Torque          | 6.8 LB-FT                                       |  |
| Hz                     | 60 Phase          | Locked-rotor Torque     | 13.7 LB-FT                                      |  |
| NEMA Design Code       | L KVA Code        | Starting Current        | 75.2 A  |  |
| Service Factor (S.F.)  | 1.15              | No-load Current         | 4.53 A  |  |
| NEMA Nom. Eff.         | 82.6 Power Factor | Line-line Res. @ 25°C   | 0.57842 Ω A Ph<br>1.1449 Ω B Ph                 |  |
| Rating - Duty          | 40C AMB-CONT      | Temp. Rise @ Rated Load | 22°C  |  |
| S.F. Amps              |                   | Temp. Rise @ S.F. Load  | 27°C  |  |

**Load Characteristics 115 V, 60 Hz, 1 HP**

| % of Rated Load | 25     | 50     | 75     | 100    | 125  | 150    | S.F. |
|-----------------|--------|--------|--------|--------|------|--------|------|
| Power Factor    | 51     | 69     | 80     | 86     | 89   | 91     | 88   |
| Efficiency      | 65.7   | 78.3   | 82.3   | 82.7   | 81.4 | 78.7   | 81.9 |
| Speed           | 1783.2 | 1769.4 | 1753.1 | 1736.2 | 1716 | 1689.1 | 1724 |
| Line amperes    | 4.86   | 5.88   | 7.33   | 9.06   | 11.1 | 13.6   | 10.3 |

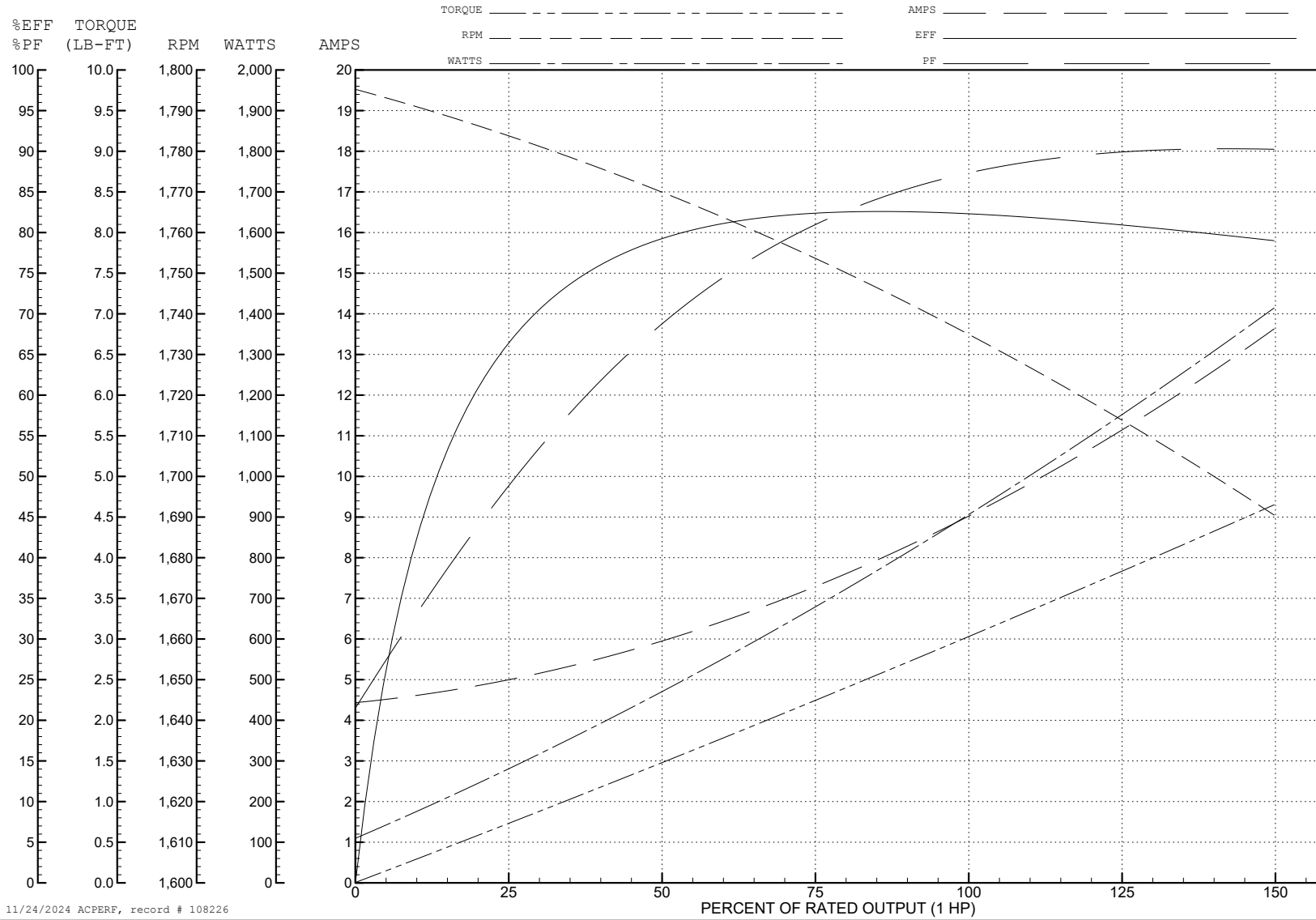
ABB Motors and Mechanical Inc.

WINDING # 35WGG109

Typical performance - not guaranteed values.

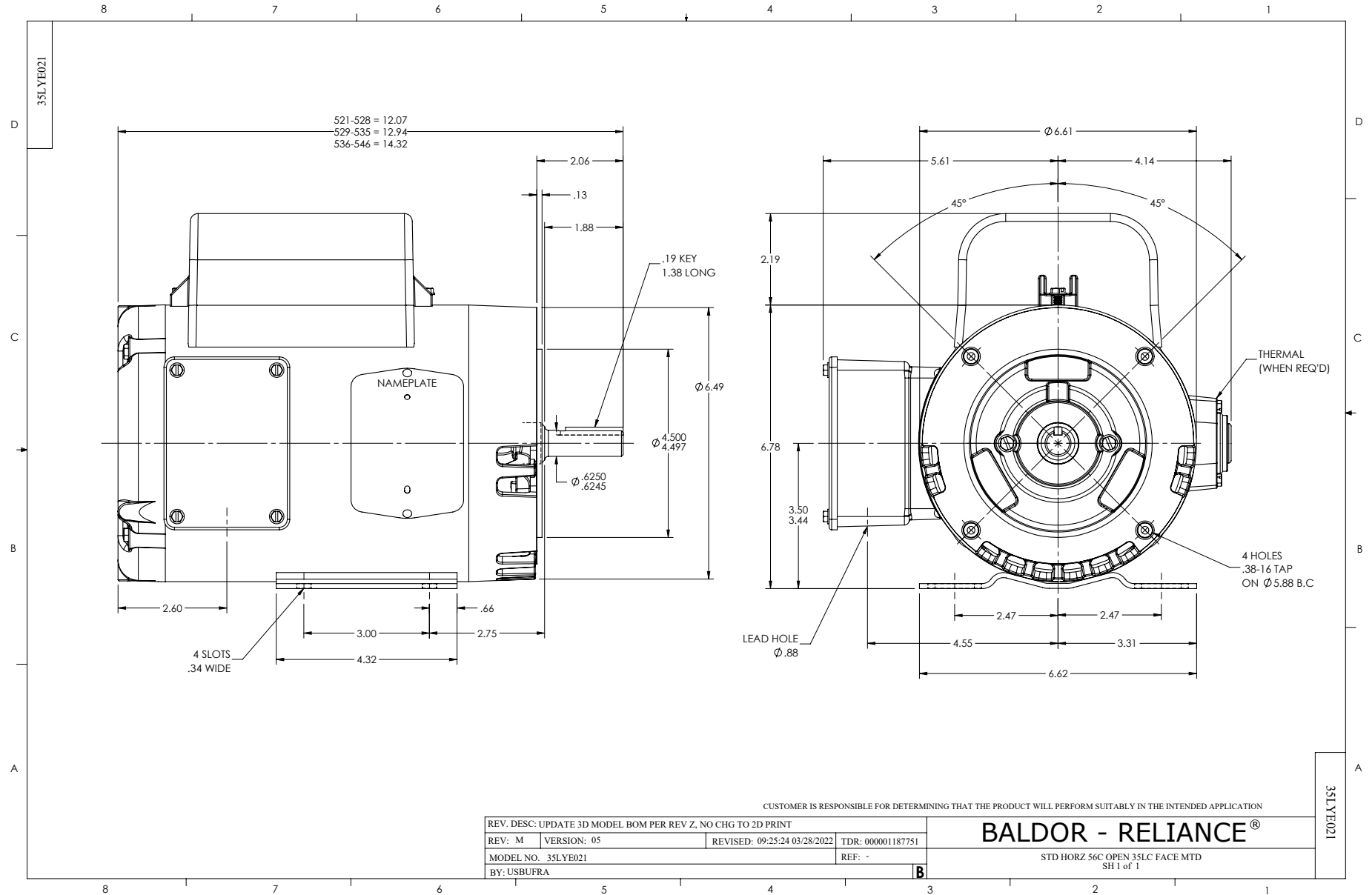
1 HP 1 PH 60 HZ 1750 RPM 115 V 3528LC

TORQUES (LB-FT): PO=9.12 PU=6.8 LR=13.7 LRA=75.2

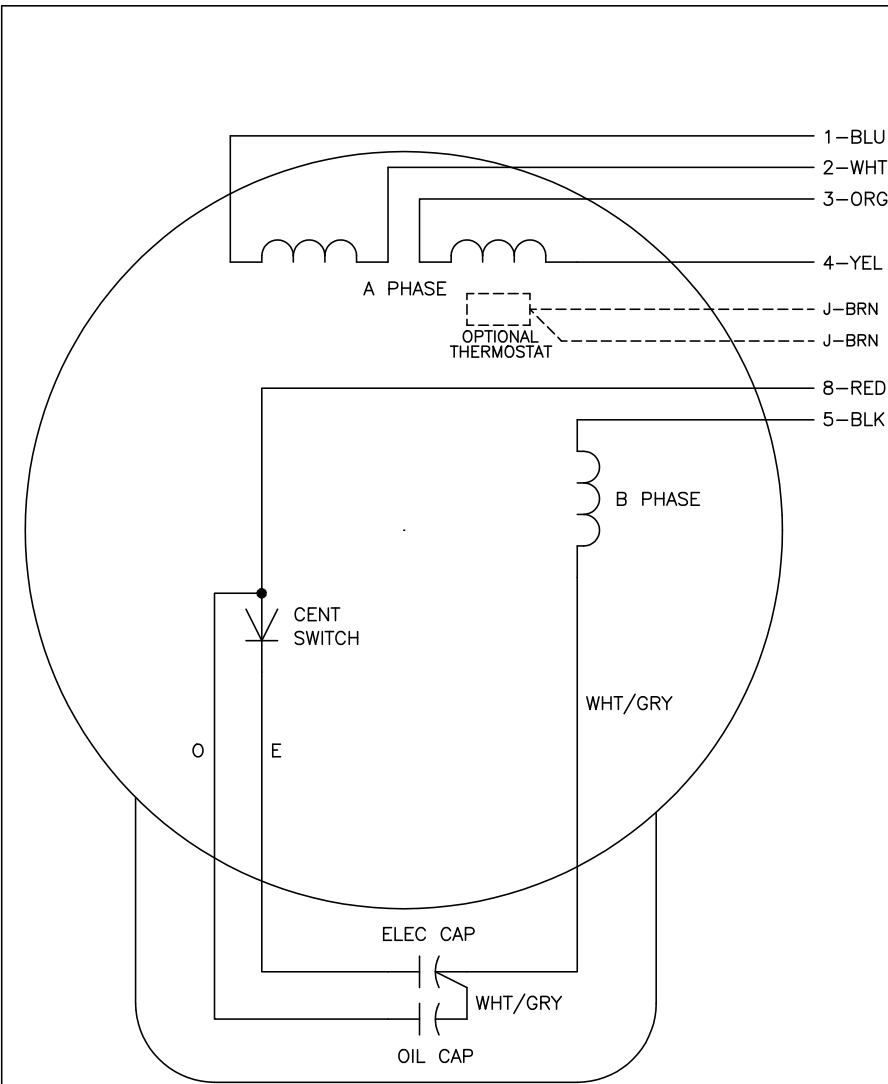


11/24/2024 ACPERF, record # 108226





CD0055



|          | LINE A | LINE B | JOIN  |
|----------|--------|--------|-------|
| HIGH STD | 1      | 4,5    | 2,3,8 |
| HIGH OPP | 1      | 4,8    | 2,3,5 |
| LOW STD  | 1,3,8  | 2,4,5  | -     |
| LOW OPP  | 1,3,5  | 2,4,8  | -     |

**NOTES:**

1. STANDARD ROTATION IS CCW FACING END OPPOSITE SHAFT EXTENSION.
2. OPTIONAL THERMOSTAT IS PROVIDED WHEN SPECIFIED.
3. MULTIPLE CAPACITORS ARE CONNECTED IN PARALLEL UNLESS OTHERWISE SPECIFIED.
4. LEAD COLORS ARE OPTIONAL. LEADS MUST ALWAYS BE NUMBERED AS SHOWN.

CD0055

|   |         |                        |              |
|---|---------|------------------------|--------------|
| REV. DESC: REVISE TO SHOW OPTIONAL COLORS |         |                        |              |
| REV. LTR: D                               | BY: JLP | REVISED: 04/08/99 1:17 | TDR: 0178636 |
| C00000                                    |         | FILE: AAA00007414      | MDL: -       |
|   |         | MTL: -                 |              |

**BALDOR ELECTRIC Co.**

TYPE LC, DV, REV, 6 LEADS