

**BALDOR • RELIANCE**

---

# Customer information packet

## CEM2551T

75HP, 1775RPM, 3PH, 60HZ, 365TC, 4462M, OPSB, F

## Specifications

Enclosure	OPSB
Frame	365TC
Frame Material	Steel
Frequency	60.00 Hz
Motor Letter Type	Three Phase
Output @ Frequency	75.000 HP @ 60 HZ
Phase	3
Synchronous Speed @ Frequency	1800 RPM @ 60 HZ
Voltage @ Frequency	230.0 V @ 60 HZ 460.0 V @ 60 HZ
Agency Approvals	CSA EEV NEMA PREMIUM NEMA_PREMIUM UR
Ambient Temperature	40 °C
Auxillary Box	No Auxillary Box
Auxillary Box Lead Termination	None
Base Indicator	Rigid
Bearing Grease Type	Polyrex EM (-20F +300F)
Blower	None
Current @ Voltage	170.000 A @ 230.0 V 85.000 A @ 460.0 V
Design Code	B
Drip Cover	No Drip Cover
Duty Rating	CONT
Efficiency @ 100% Load	95.0 %
Electrically Isolated Bearing	Not Electrically Isolated
Feedback Device	NO FEEDBACK
Front Face Code	Standard
Front Shaft Indicator	None
Heater Indicator	No Heater
High Voltage Full Load Amps	85.0 a

## Part detail

Revision	U
Type	AC
Mech. spec.	44D052
Base	
Status	PRD/A
Elec. spec.	44WGW013
Layout	44LYD052
Eff. date	11-19-2024
CD Diagram	CD0180
Poles	04
Leads	9#6
Proprietary	False
Created date	08-03-2010

<b>Insulation Class</b>	F
<b>Inverter Code</b>	Inverter Ready
<b>KVA Code</b>	F
<b>Lifting Lugs</b>	Standard Lifting Lugs
<b>Locked Bearing Indicator</b>	Locked Bearing
<b>Motor Lead Exit</b>	Ko Box
<b>Motor Lead Quantity/Wire Size</b>	9 @ 6 AWG
<b>Motor Lead Termination</b>	Flying Leads
<b>Motor Standards</b>	NEMA
<b>Motor Type</b>	4462M
<b>Mounting Arrangement</b>	F1
<b>Number of Poles</b>	4
<b>Overall Length</b>	33.72 IN
<b>Power Factor</b>	85
<b>Product Family</b>	General Purpose
<b>Pulley End Bearing Type</b>	Ball
<b>Pulley Face Code</b>	C-Face
<b>Pulley Shaft Indicator</b>	Standard
<b>Rodent Screen</b>	None
<b>Service Factor</b>	1.15
<b>Shaft Diameter</b>	2.375 IN
<b>Shaft Extension Location</b>	Pulley End
<b>Shaft Ground Indicator</b>	No Shaft Grounding
<b>Shaft Rotation</b>	Reversible
<b>Shaft Slinger Indicator</b>	No Slinger
<b>Speed</b>	1775 rpm
<b>Speed Code</b>	Single Speed
<b>Starting Method</b>	Direct on line
<b>Thermal Device - Bearing</b>	None
<b>Thermal Device - Winding</b>	None
<b>Vibration Sensor Indicator</b>	No Vibration Sensor
<b>Winding Thermal 1</b>	None
<b>Winding Thermal 2</b>	None

**Nameplate**

**NP2138LUA**

<b>CAT.NO.</b>	CEM2551T	<b>P/N</b>		<b>ENCLOSURE</b>	OPSB
<b>SPEC.</b>	44D052W013G1	<b>CC</b>	010A	<b>FRAME</b>	365TC
<b>HP</b>	75	<b>CLASS</b>	F	<b>HZ</b>	60
<b>RPM</b>	1775	<b>PH</b>	3	<b>DES</b>	B
<b>VOLT</b>	230/460	<b>KVA-CODE</b>	F	<b>ODE BRG</b>	6312
<b>AMP</b>	170/85	<b>DE BRG</b>			6313
<b>RATING</b>	40C AMB-CONT	<b>GREASE</b>	POLYREX EM		
<b>NEMA-NOM-EFF</b>	95	<b>PF</b>	85	<b>SER.F.</b>	1.15
<b>HTR-VOLTS</b>	50Hz 75Hp 190/380V 160/80A			SF 1.0	
<b>HTR-AMPS</b>					

## Parts list

Part number	Description	Quantity
SA200831	SA 44D052W013G1	1.000 ea
RA188142	RA 44D052W013G1	1.000 ea
HA6731	LIFTING LUG FOR 44 FRAME MOTORS.	2.000 ea
HA6616A01	CAST ADAPTOR, 44 FRAME - NEMA 364-5 - MA	1.000 ea
19XW3816A12	.38-16 X .75 HEX WASHER HEAD TAPTITE II	2.000 ea
HW1001A38	LOCKWASHER 3/8, ZINC PLT .688 OD, .382 I	2.000 ea
10CB3002A02	CB 309 3.62 LD HOLE, .38 MTG HOLE & 3.50	1.000 ea
19XW3118A16	.31-18 HEX WASHER HEAD TAPTITE II 1.00 L	4.000 ea
HW1001A31	LOCKWASHER 5/16, ZINC PLT.591 OD, .319 I	4.000 ea
WD1000B25	GND LUG, BURNDY L125HP OR T&B L125HP-BB	1.000 ea
19XW3118G08	.31-18X.50,HEX WSHR HD,TAPTITE 2,GREEN	1.000 ea
44EP1203A02	FREP, MACH	1.000 ea
HW5100A15	W4997-050 WVY WSHR (WB)	1.000 ea
10XN3816K48	3/8-16 X 3 HEX HD CAP SCREW,Z/P	4.000 ea
HW1001A38	LOCKWASHER 3/8, ZINC PLT .688 OD, .382 I	4.000 ea
44EP1403A01	ENDPLATE MACH. 364-5TC FOR 313 BRG	1.000 ea
XY5013A12	NUT,1/2-13,HEX,STEEL,ZINCPLATED	8.000 ea
10CB3500SP	CONDUIT BOX LID, CAST	1.000 ea
51XW2520A12	.25-20 X .75, TAPTITE II, HEX WSHR SLTD	4.000 ea
HW2501J36	KEY, 5/8 SQ X 4.250	1.000 ea
MN416A01	TAG-INSTAL-MAINT no wire (2500bx)4/22	1.000 ea
HW4500A03	GREASE FITTING, .125 NPT 1610(ALEMITE) 8	1.000 ea
HW4500A20	1/8NPT SL PIPE PLUG	1.000 ea
MJ1000A02	GREASE, POLYREX EM EXXON	0.030 lb
HW4500A03	GREASE FITTING, .125 NPT 1610(ALEMITE) 8	1.000 ea
HW4500A20	1/8NPT SL PIPE PLUG	1.000 ea
MG1050Y01	CELEROL BALDOR GOLD *** NLA IN 5 GALLON	0.080 ga
85XU0407S04	4X1/4 U DRIVE PIN STAINLESS	4.000 ea
44AD2001A02	BAFFLE 44 OPEN,"X"=1.50, SLOTTED BAND MT	1.000 ea
44AD2001A02	BAFFLE 44 OPEN,"X"=1.50, SLOTTED BAND MT	1.000 ea
HA3175A02	THRUBOLT STUD 1/2-13 X 24.500 - GRADE 2	4.000 ea

LB1624	COMBINED WARNING LABEL, ISO/ANSI PICTOGR	1.000 ea
LC0181	CONNECTION LABEL	1.000 ea
NP2138LUA	ALUM SUPER-E UL PREM CC (300SER)	1.000 ea
44PA2000	PKGP, CTN ID 42X34X25, STD BASE	1.000 ea

**AC Induction Motor Performance Data**

Record # 13882

Typical performance - not guaranteed values

Winding: 44WGW013-R001		Type: 4462M	Enclosure: OPEN
<b>Nameplate Data</b>		<b>460 V, 60 Hz: High Voltage Connection</b>	
Rated Output (HP)	75	Full Load Torque	222 LB-FT
Volts	230/460	Start Configuration	direct on line
Full Load Amps	17/85	Breakdown Torque	610 LB-FT
R.P.M.	1775	Pull-up Torque	235 LB-FT
Hz	60 Phase	Locked-rotor Torque	327 LB-FT
NEMA Design Code	B KVA Code	Starting Current	507 A
Service Factor (S.F.)	1.15	No-load Current	26.2 A
NEMA Nom. Eff.	95 Power Factor	Line-line Res. @ 25°C	0.0799 Ω
Rating - Duty	40C AMB-CONT	Temp. Rise @ Rated Load	30°C
S.F. Amps		Temp. Rise @ S.F. Load	37°C
		Locked-rotor Power Factor	26.3
		Rotor inertia	11.7 LB-FT <sup>2</sup>

**Load Characteristics 460 V, 60 Hz, 75 HP**

% of Rated Load	25	50	75	100	125	150	S.F.
Power Factor	56	77	84	86	87	87	87
Efficiency	93.6	95.6	95.4	95.3	94.6	93.9	94.9
Speed	1794	1788	1782	1776	1769	1761	1772
Line amperes	33.9	48	66.1	85.4	106	128	97.76

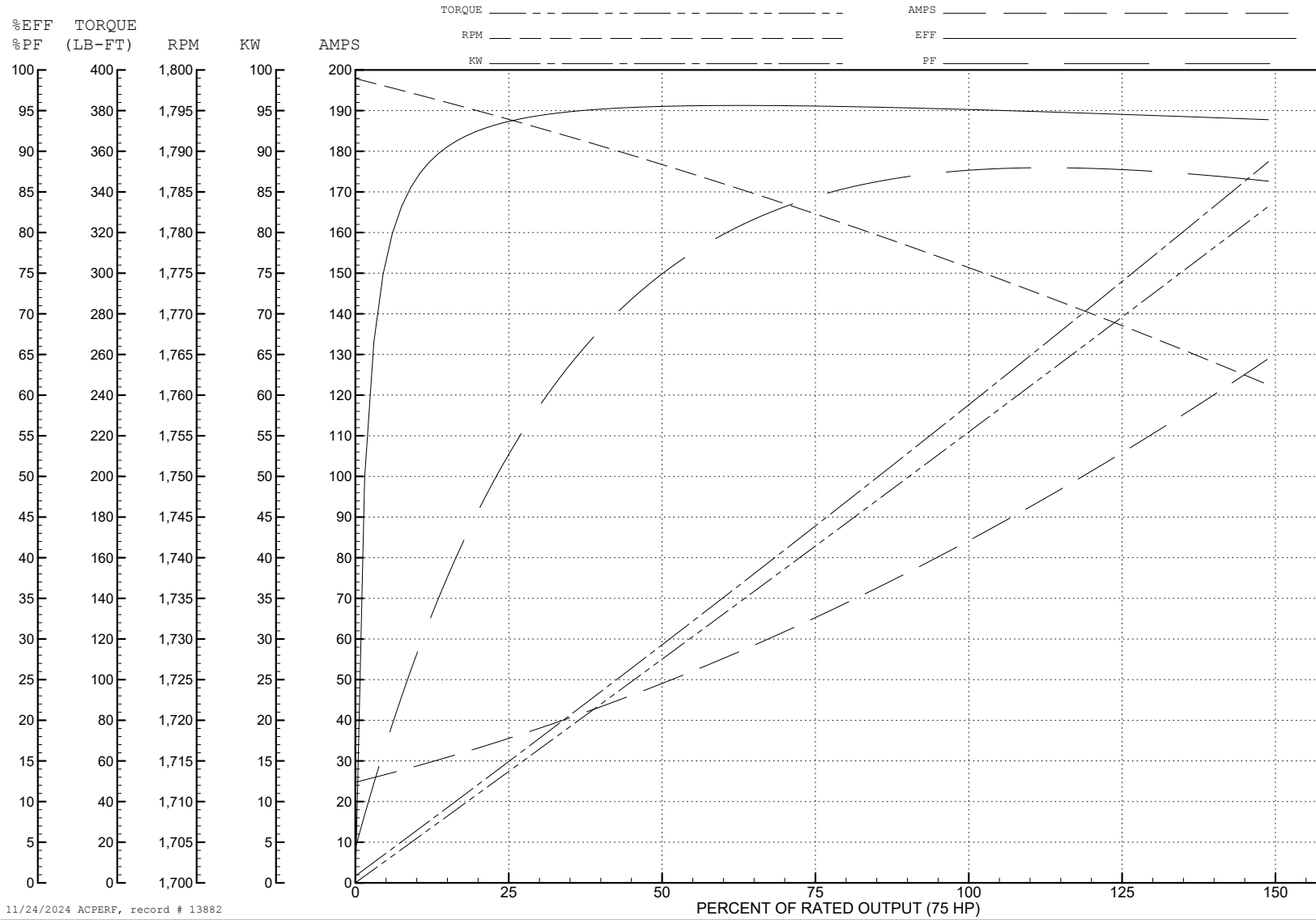
ABB Motors and Mechanical Inc.

WINDING # 44WGW013

Typical performance - not guaranteed values.

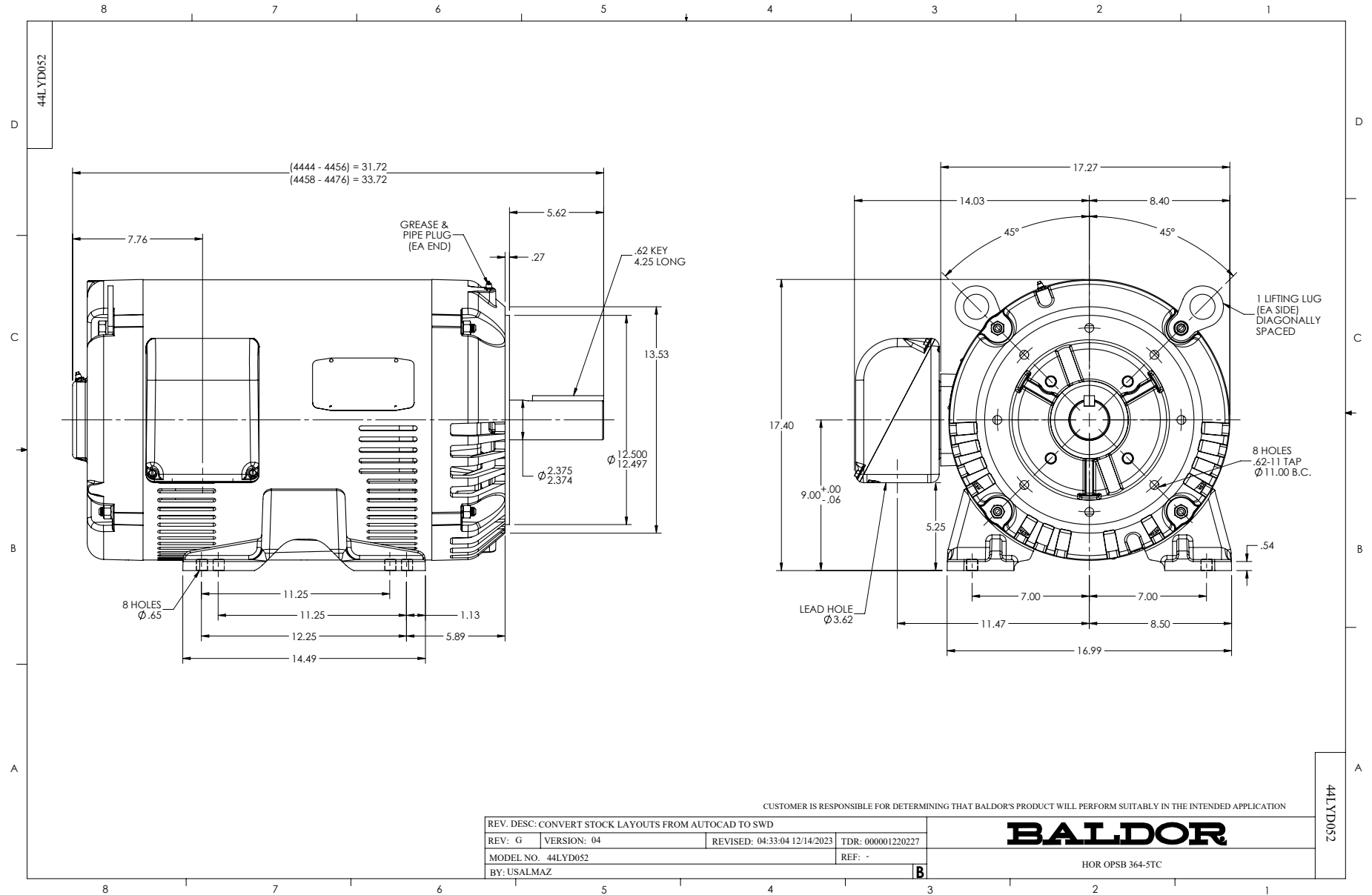
75 HP 3 PH 60 HZ 1775 RPM 460 V 4462M

TORQUES (LB-FT): PO=610 PU=235 LR=327 LRA=507

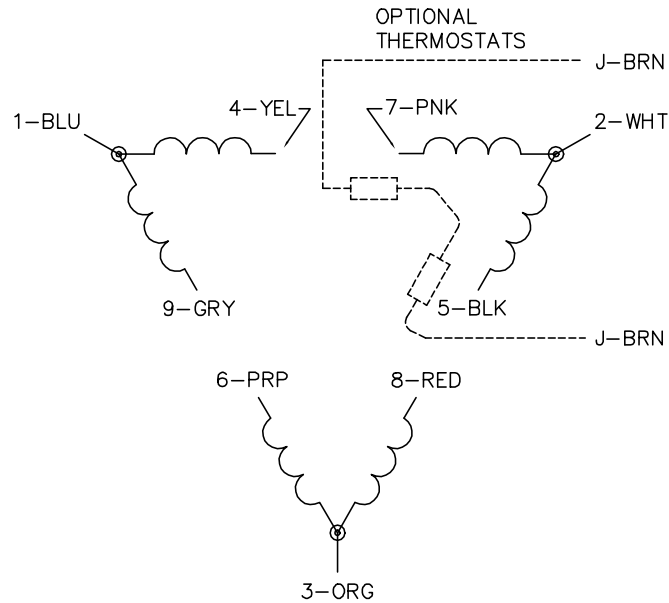


11/24/2024 ACPERF, record # 13882

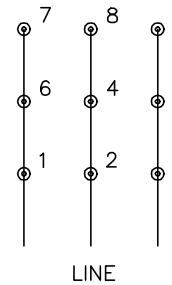




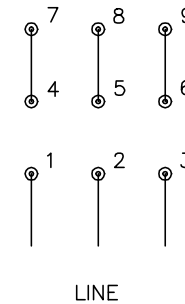
CD0180



LOW VOLTAGE  
(2D)



HIGH VOLTAGE  
(1D)



NOTES:

1. INTERCHANGE ANY TWO LINE LEADS TO REVERSE ROTATION.
2. OPTIONAL THERMOSTATS ARE PROVIDED WHEN SPECIFIED.
3. ACTUAL NUMBER OF INTERNAL PARALLEL CIRCUITS MAY BE A MULTIPLE OF THOSE SHOWN ABOVE.
4. LEAD COLORS ARE OPTIONAL. LEADS MUST ALWAYS BE NUMBERED AS SHOWN.

CD0180

REV. DESC: ADD CLASS CONN00000007		
REV. LTR: D	VERSION: 01	TDR: 000001099922
FILE: \AAA\00005\148	REVISED: 10: 25: 29 02/19/2019	BY: ENBRIRO
MTL: -	© □	

**BALDOR - RELIANCE®**

3PH, DV, 9 LEADS, DELTA CONNECTION

SH 1 of 1