



Customer information packet

CEM4314T-G

60HP, 1780RPM, 3PH, 60HZ, 364TC, A3658M, TEFC

Class - None

Division - Not Applicable

Specifications

| | |
|-------------------------------|--|
| Enclosure | TEFC |
| Frame | 364TC |
| Frame Material | Iron |
| Frequency | 60.00 Hz |
| Haz Area Class and Group | None |
| Haz Area Division | Not Applicable |
| Motor Letter Type | Three Phase |
| Output @ Frequency | 60.000 HP @ 60 HZ |
| Phase | 3 |
| Synchronous Speed @ Frequency | 1800 RPM @ 60 HZ |
| Voltage @ Frequency | 230.0 V @ 60 HZ 460.0 V @ 60 HZ |
| Ambient Temperature | 40 °C |
| Auxillary Box | No Auxillary Box |
| Base Indicator | Rigid |
| Bearing Grease Type | Polyrex EM (-20F +300F) |
| Current @ Voltage | 140.000 A @ 230.0 V 152.000 A @ 208.0 V 70.000 A @ 460.0 V |
| Design Code | B |
| Duty Rating | CONT |
| Efficiency @ 100% Load | 95.0 % |
| Feedback Device | NO FEEDBACK |
| Heater Indicator | No Heater |
| High Voltage Full Load Amps | 70.0 a |
| Insulation Class | H |
| Inverter Code | Inverter Ready |
| KVA Code | G |
| Lifting Lugs | Standard Lifting Lugs |
| Motor Lead Quantity/Wire Size | 3 @ 4 AWG |
| Motor Standards | NEMA |
| Motor Type | A3658M |

Part detail

| | |
|--------------|------------|
| Revision | B |
| Type | AC |
| Mech. spec. | |
| Base | |
| Status | PRD/A |
| Elec. spec. | A36WG4075 |
| Layout | 617428-019 |
| Eff. date | 07-08-2024 |
| CD Diagram | 416820-002 |
| Poles | 04 |
| Leads | 3#4,6#6 |
| Proprietary | False |
| Created date | 08-24-2021 |

| | |
|---------------------------------|--------------------|
| Mounting Arrangement | F1 |
| Number of Poles | 4 |
| Overall Length | 33.43 IN |
| Power Factor | 84 |
| Product Family | General Industrial |
| Pulley End Bearing Type | Ball |
| Pulley Face Code | C-Face |
| Service Factor | 1.15 |
| Shaft Diameter | 2.374 IN |
| Shaft Ground Indicator | Shaft Grounding |
| Shaft Rotation | Reversible |
| Shaft Slinger Indicator | Shaft Slinger |
| Speed | 1780 rpm |
| Speed Code | Single Speed |
| Starting Method | Direct on line |
| Thermal Device - Bearing | None |
| Thermal Device - Winding | None |

Nameplate

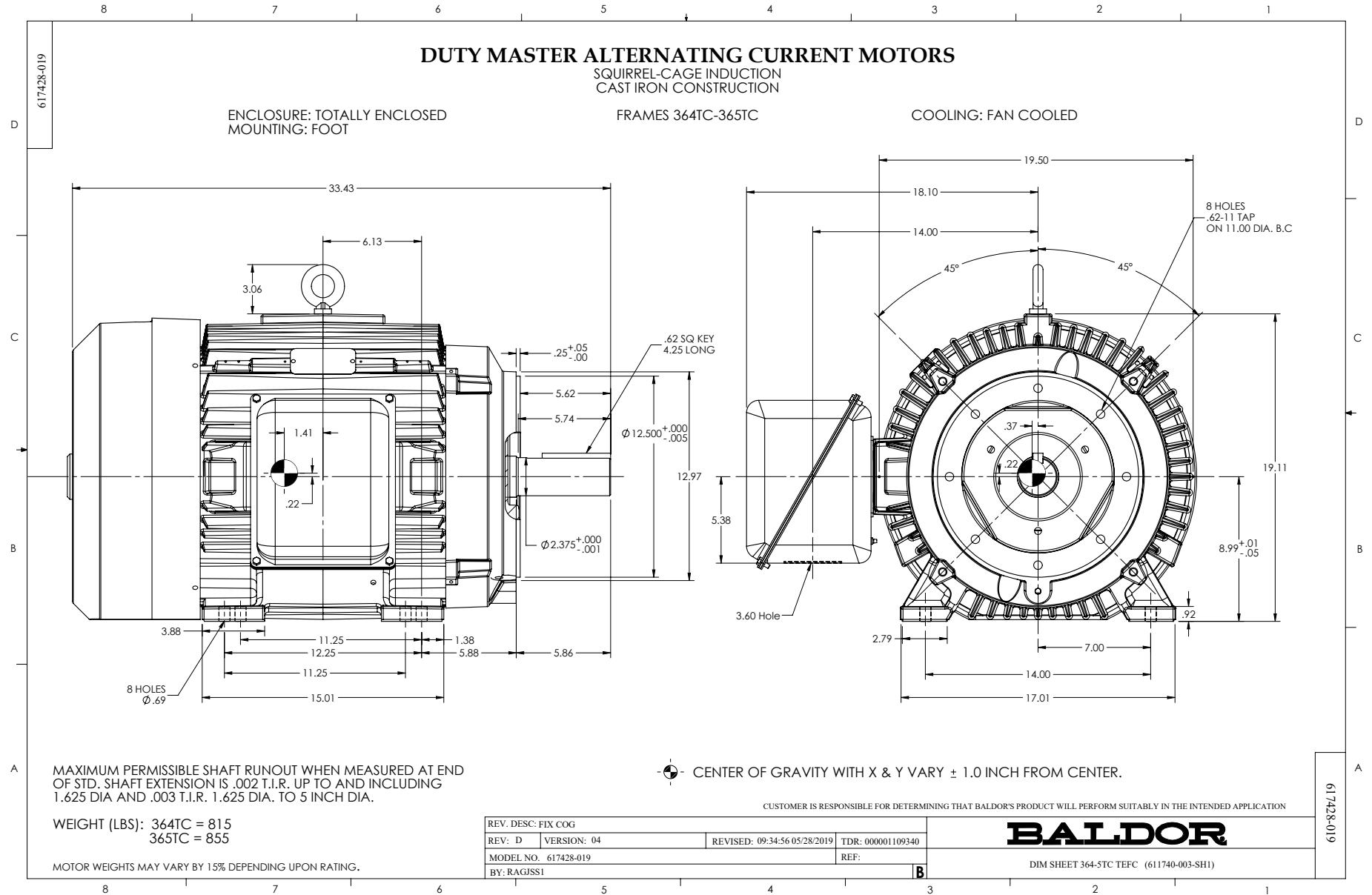
NP3979LUA

| | | | | | | | | | | | | | |
|----------------------|----------------------------|-----------|---------------|----------------------|-------------|---------------|-------------|------------|------------|-----------|----------------------|-------|--------------------|
| CAT # | CEM4314T-G | | SER | | | CC | 010A | | | | | | |
| SPEC | A36-7861-4075 | | RATING | 40C AMB-CONT | | | | | | | | | |
| HZ | VOLTS | | AMPS | | RPM | HP | CODE | SF | DES | PF | NEMA NOM. EFF | | |
| 60 | 230/460 | | 140/70 | | 1780 | 60 | G | 1.15 | B | 84 % | 95 % | | |
| | - | | | | | | | | | % | % | | |
| PH | 3 | CL | H | MAX CORR KVAR | | 15 | | | | | | | |
| BRG | DE | 6313 | ODE | 6313 | ENCL | TEFC | FR | 364TC | | | | | |
| GREASE | POLYREX EM | | | | | MTR WT | 907 | LBS | | | | | |
| USABLE AT | 50HZ 50HP 190/380V 138/69A | | | | | SF1.0 | | | | | | | |
| INVERTER DUTY | CT | 15-60 | HZ | 4:1 | VT | 3-60 | HZ | 20:1 | CHP | 60-90 | HZ | 1.5:1 | 1.0 SF VPWM |
| MAX RPM | 2700 | | | | | | | | | | | | |

Parts list

| Part number | Description | Quantity |
|-------------|---|----------|
| SA396755 | SA A36-7861-4075 | 1.000 ea |
| RA387587 | RA A36-7861-4075 | 1.000 ea |
| 421948032 | LABEL, MYLAR | 1.000 ea |
| 000692000VD | LABEL WARNING | 1.000 ea |
| NP3979LUA | SS SUPER-E UR CSA-C-US-EEV NEMA PREM CC | 1.000 ea |
| 085922073B | BRKT 360 085922072WCC KB | 1.000 ea |
| 415072001B | CLAMP | 1.000 ea |
| 078559001A | +FANCV - 360 | 1.000 ea |
| 034180012DA | KEY 1X4X1/4X1-1/2 L | 1.000 ea |
| 702676001C | FAN 360 | 1.000 ea |
| 004824015A | GREASE POLYREX EM | 0.540 lb |
| 032018012DK | HHCS 1/2-13X1-1/2 PLTD. 032018012DR | 4.000 ea |
| 032018008AK | HHCS 1/4-20X1 PLATED | 4.000 ea |
| 032018024CK | HHCS 3/8-16X3 PLTD. | 3.000 ea |
| 415096002A | CPLG 1/8 HEX TYPE | 1.000 ea |
| 410700004F | WSHR | 1.000 ea |
| 035000001G | GREASE RELIEF FITTING, ALEMITE 317400 | 1.000 ea |
| 034530052AB | P/NIP 1/8X6-1/2 Zinc | 1.000 ea |
| 034690001AB | 1/8" NPT SQHDPLG | 1.000 ea |
| 034600001AA | BUSH 1/4TO1/8 BLACK | 1.000 ea |
| 034690001AB | 1/8" NPT SQHDPLG | 1.000 ea |
| 034600001AA | BUSH 1/4TO1/8 BLACK | 1.000 ea |
| 085922070H | E360 C FACE BRKT 6313 BRG 085922069WCA | 1.000 ea |
| 032018012DK | HHCS 1/2-13X1-1/2 PLTD. 032018012DR | 4.000 ea |
| 032018024CK | HHCS 3/8-16X3 PLTD. | 3.000 ea |
| 415045002E | SLGR | 1.000 ea |
| 035000001G | GREASE RELIEF FITTING, ALEMITE 317400 | 1.000 ea |
| 077176000L | C/BOX, PAINTED 440 | 1.000 ea |
| 077176001A | CBOXC, PAINTED 360-400 | 1.000 ea |
| 043292000AJ | GASK 320-400 | 1.000 ea |
| 402731001A | GASK 360-440 | 1.000 ea |

| | | |
|-------------|--|----------|
| 418150003A | GREASE FITTING CAP | 1.000 ea |
| 032018005AK | HHCS 1/4-20X5/8 PLATED | 4.000 ea |
| 032018008CK | HHCS 3/8-16X1L PLATED | 4.000 ea |
| 035000001A | ALFTG 1/8" 1610-BL | 1.000 ea |
| 415000115H | T/LUG #2AWG-4/0AWG | 1.000 ea |
| 406099000A | PLUG - FAN COVER 320-440 | 1.000 ea |
| 035000001A | ALFTG 1/8" 1610-BL | 1.000 ea |
| 418150003A | GREASE FITTING CAP | 1.000 ea |
| LB1459 | AEGIS SGR LABEL "AEGISLBL-100" | 1.000 ea |
| 032018005DL | 1/2-13 X 5/8 SILICON BRONZE HHCS | 1.000 ea |
| MG1025Y17 | WILKOFAST, 789.701, SUPER E PEARL GOLD | 0.250 ga |
| 033775004EA | DRSCR #6-1/4 304 S.S. | 2.000 ea |
| 034180034HA | KEY 5/8X5/8X4-1/4 L | 1.000 ea |
| 14PA1000 | PACKAGING 314 GROUP COMBINED PRINT | 1.000 ea |
| HW1000A32 | 5/16 FL WASHER WIDE,ID=.344,OD=1.125 | 3.000 ea |
| 032509020C | CARRIAGE BOLT - 360 | 3.000 ea |



416820-002

A-C MOTOR
 CONNECTION DIAGRAM
 STANDARD 9 LEAD DELTA-CONNECTED



(N.P. 1575-B)

416820-002

| | | |
|---|------------------------------|-------------------|
| REV. DESC: FONT CHANGE FOR PDF SEARCHABLE | | |
| REV. LTR: A | VERSION: 01 | TDR: 000001009382 |
| FILE: \MGA\00000\661 | REVISED: 02:46:19 02/13/2020 | BY: MGHMTT |
| MTL: - | | © □ |

BALDOR - RELIANCE®

CONN DIAG - STANDARD 9 LEAD, DELTA-CONNECTED

SH 1 of 1