

BALDOR • RELIANCE

Customer information packet

CEM7042T

3//2HP, 1760//1460RPM, 3PH, 60//50HZ, 182TC

Class - CLI GP D; CLII GP F,G

Division - Division I

Copyright © All product information within this document is subject to ABB Motors and Mechanical Inc. copyright © protection, unless otherwise noted.

11/24/2024 11:48:22 PM

Specifications

Enclosure	XPFC
Frame	182TC
Frame Material	Steel
Frequency	50.00 Hz 60.00 Hz
Haz Area Class and Group	CLI GP D; CLII GP F,G
Haz Area Division	Division I
Motor Letter Type	Three Phase
Output @ Frequency	2.000 HP @ 50 HZ 3.000 HP @ 60 HZ
Phase	3
Synchronous Speed @ Frequency	1800 RPM @ 60 HZ
Voltage @ Frequency	460.0 V @ 60 HZ 380.0 V @ 50 HZ 230.0 V @ 60 HZ 190.0 V @ 50 HZ
Agency Approvals	CSA UL
Ambient Temperature	40 °C
Auxillary Box	No Auxillary Box
Auxillary Box Lead Termination	None
Base Indicator	Rigid
Bearing Grease Type	Polyrex EM (-20F +300F)
Blower	None
Current @ Voltage	9.000 A @ 208.0 V 8.400 A @ 230.0 V 7.200 A @ 190.0 V 4.200 A @ 460.0 V 3.600 A @ 380.0 V
Design Code	B
Drip Cover	No Drip Cover
Duty Rating	CONT

Part detail

Revision	Q
Type	AC
Mech. spec.	36N020
Base	
Status	PRD/A
Elec. spec.	36WGS266
Layout	36LYN020
Eff. date	02-15-2024
CD Diagram	CD0005
Poles	04
Leads	9#16
Proprietary	False
Created date	09-30-2010

Efficiency @ 100% Load	89.5 %
Electrically Isolated Bearing	Not Electrically Isolated
Feedback Device	NO FEEDBACK
Front Face Code	Standard
Front Shaft Indicator	None
Haz Area Temp Code	T3C
Heater Indicator	No Heater
High Voltage Full Load Amps	3.6 a
Insulation Class	B
Inverter Code	Not Inverter
KVA Code	K
Lifting Lugs	No Lifting Lugs
Locked Bearing Indicator	Locked Bearing
Motor Lead Exit	Ko Box
Motor Lead Quantity/Wire Size	9 @ 16 AWG
Motor Lead Termination	Flying Leads
Motor Standards	NEMA
Motor Type	3632M
Mounting Arrangement	F1
Number of Poles	4
Overall Length	18.86 IN
Power Factor	75
Product Family	General Purpose
Pulley End Bearing Type	Ball
Pulley Face Code	C-Face
Pulley Shaft Indicator	Standard
Rodent Screen	None
RoHS Status	ROHS COMPLIANT
Service Factor	1.00
Shaft Diameter	1.125 IN
Shaft Extension Location	Pulley End
Shaft Ground Indicator	No Shaft Grounding
Shaft Rotation	Reversible
Shaft Slinger Indicator	No Slinger

Speed	1460 rpm 1760 rpm
Speed Code	Single Speed
Starting Method	Direct on line
Thermal Device - Bearing	None
Thermal Device - Winding	Normally Closed Thermostat
Vibration Sensor Indicator	No Vibration Sensor
Winding Thermal 1	None
Winding Thermal 2	None

Nameplate

NP1426XPSLEV					
NO.		CC	010A		
SER.					
SPEC.	36N020S266G1				
CAT.NO.	CEM7042T				
HP	3//2	T. CODE	T3C		
VOLTS	230/460//190/380				
AMPS	8.4/4.2//7.2/3.6				
RPM	1760//1460				
HZ	60//50	PH	3	CL	B
SER.F.	1.00	DES	B	CODE	K
RATING	40C AMB-CONT				
FRAME	182TC	NEMA-NOM-EFF		89.5	
		PF	75		
BLANK					

Parts list

Part number	Description	Quantity
SA204438	SA 36N020S266G1	1.000 ea
RA191684	RA 36N020S266G1	1.000 ea
36FN3000C01SP	EXFN, PLASTIC, 5.25 OD, .912 ID	1.000 ea
35CB3001A02SP	EXPL PROOF CONDUIT BOX, 3/4"PIPE TAP LEA	1.000 ea
11XW1032G06	10-32 X .38, TAPTITE II, HEX WSHR SLTD U	1.000 ea
HW3001B01	BRASS CUP WASHER, FOR #10 SCREW	1.000 ea
36EP3700A01	FR ENDPLATE, MACH	1.000 ea
HW4500A19	1/4-28X1/4 SLOTTED PLUG F/S	2.000 ea
HW5100A05	WVY WSHR F/205 & 304 BRGS	1.000 ea
36EP1703A01	PU ENDPLATE, MACH	1.000 ea
HW4001A01	1/4 HX SOC PIPE PLG (F/S) ALLOY STEEL W/	2.000 ea
63XN1032A07	10-32 X 7/16 TRUSS HEAD,TORX SERRATED ZN	2.000 ea
84XN1032J20	SCREW, SOC 10-32 X 1 1/4"BMH4602	2.000 ea
36FH4009A02	FAN COVER FOR VM7042T,PRIMER	1.000 ea
51XW1032A06	10-32 X .38, TAPTITE II, HEX WSHR SLTD S	3.000 ea
35CB3500A01SP	CONDUIT BOX LID, MACH	1.000 ea
51XN2520A16	SCREW, HEX WS SLT, ZN, 1/4-20 X 1.00	4.000 ea
HW2501E16	KEY, 1/4 SQ X 1.750	1.000 ea
HA7000A02	KEY RETAINER RING, 1 1/8 DIA, 1 3/8 DIA	1.000 ea
85XU0407S04	4X1/4 U DRIVE PIN STAINLESS	6.000 ea
NP0018F	ALUM UL XP CONDUIT BOX NAMEPLATE	1.000 ea
HA1025A21	WSHR,FELT .125" THK	1.000 ea
MJ1000A02	GREASE, POLYREX EM EXXON	0.050 lb
51XB1214A16	12-14X1.00 HXWSSLD SERTYB	1.000 ea
MG1025G29	WILKOFAS, 789.229, DARK CHARCOAL GRAY	0.022 ga
HA3105A06	THRUBOLT- 3/8-16 X 10.500 X	4.000 ea
LC0145B01	CONNECTION LABEL	1.000 ea
NP1426XPSLEV	SS XP UL CSA-EEV CC CL-I GP-D	1.000 ea
36PA1001	PKG GRP, PRINT PK1017A06	1.000 ea
MN416A01	TAG-INSTAL-MAINT no wire (2500bx)4/22	1.000 ea
LB1624	COMBINED WARNING LABEL, ISO/ANSI PICTOGR	1.000 ea

AC Induction Motor Performance Data

Record # 35725

Typical performance - not guaranteed values

Winding: 36WGS266-R003		Type: 3632M		Enclosure: XPFC	
Nameplate Data			460 V, 60 Hz: High Voltage Connection		
Rated Output (HP)	3//2		Full Load Torque	8.8 LB-FT	
Volts	230/460//190/380		Start Configuration	direct on line	
Full Load Amps	8.4/4.2//7.2/3.6		Breakdown Torque	37.6 LB-FT	
R.P.M.	1760//1460		Pull-up Torque	15.2 LB-FT	
Hz	60//50	Phase	3	Locked-rotor Torque	21.7 LB-FT
NEMA Design Code	B KVA Code		K	Starting Current	32.7 A
Service Factor (S.F.)			1	No-load Current	2.3 A
NEMA Nom. Eff.	89.5	Power Factor	75	Line-line Res. @ 25°C	3.81 Ω
Rating - Duty	40C AMB-CONT			Temp. Rise @ Rated Load	44°C
				Locked-rotor Power Factor	42.2
				Rotor inertia	0.3 LB-FT ²

Load Characteristics 460 V, 60 Hz, 3 HP

% of Rated Load	25	50	75	100	125	150
Power Factor	35	55	68	75	80	82
Efficiency	81.1	87.8	89.6	89.8	89.7	88.2
Speed	1791	1783	1773	1764	1753	1741
Line amperes	2.47	2.85	3.43	4.09	4.89	5.78

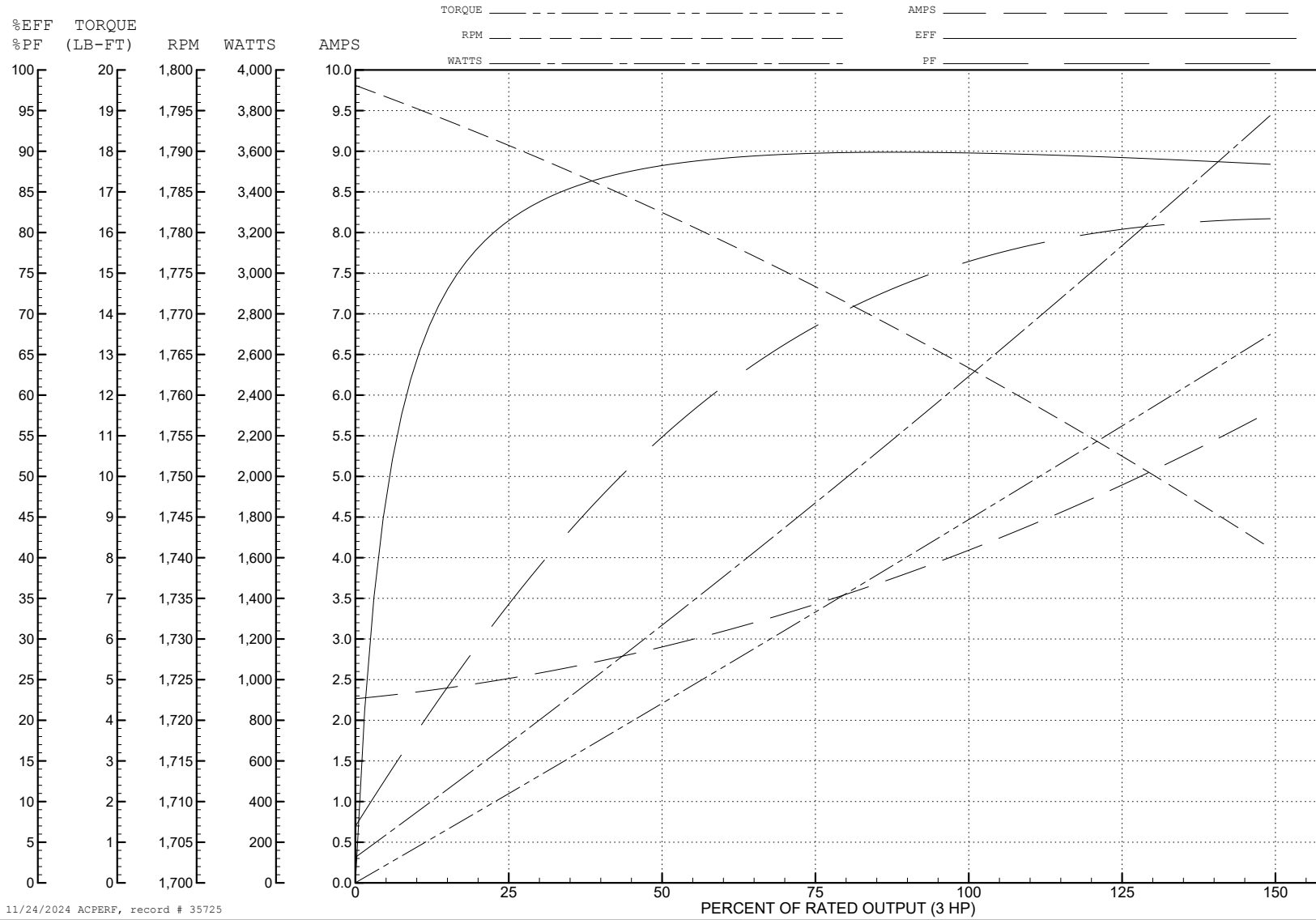
ABB Motors and Mechanical Inc.

WINDING # 36WGS266

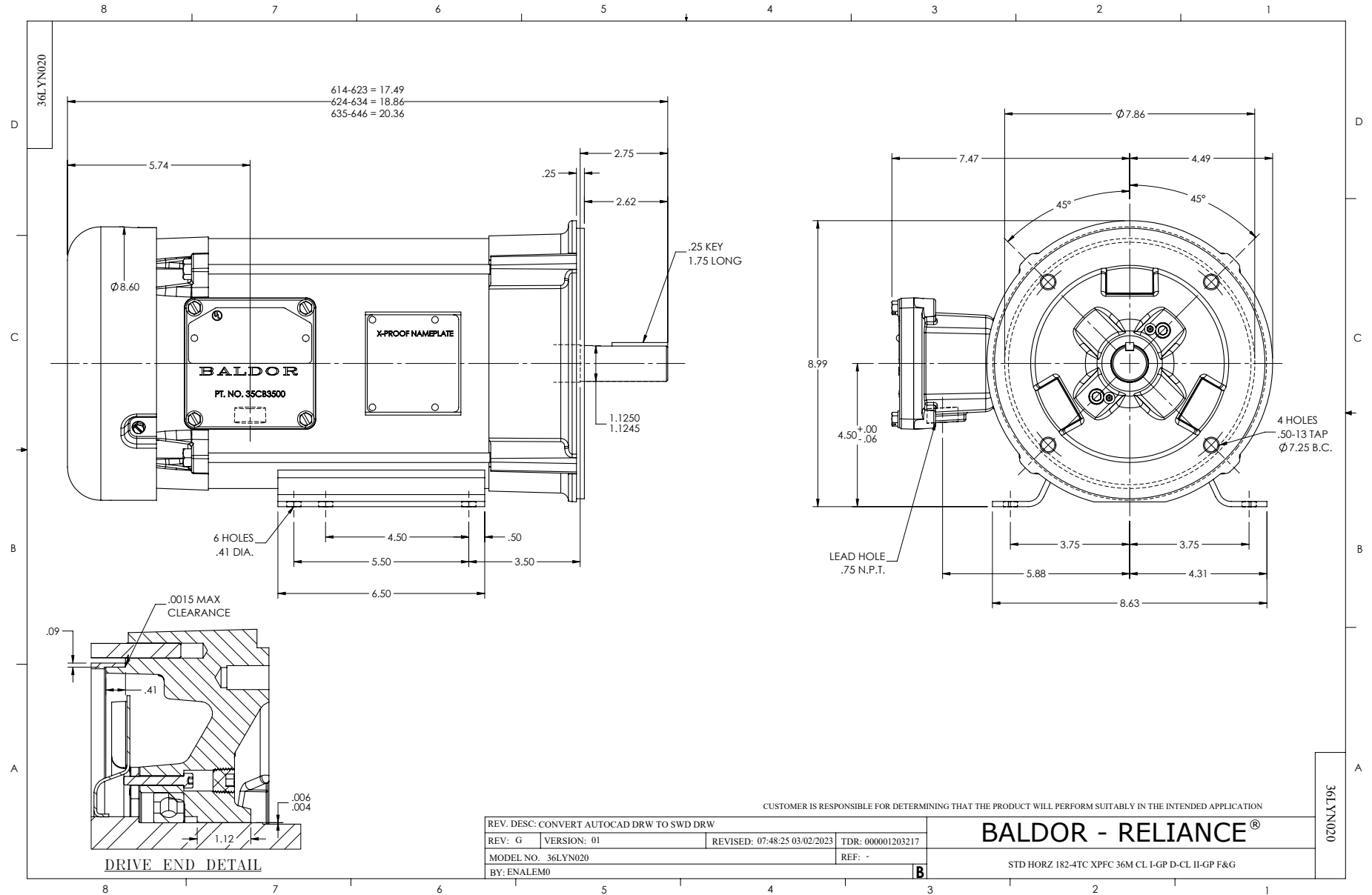
3 HP 3 PH 60 HZ 1764 RPM 460 V 3632M

Typical performance - not guaranteed values.

TORQUES (LB-FT): PO=37.6 PU=15.2 LR=21.7 LRA=32.7



11/24/2024 ACPERF, record # 35725



CD0005



LOW VOLTAGE
(2Y)



LINE

HIGH VOLTAGE
(1Y)



LINE

NOTES:

1. INTERCHANGE ANY TWO LINE LEADS TO REVERSE ROTATION.
2. OPTIONAL THERMOSTATS ARE PROVIDED WHEN SPECIFIED.
3. ACTUAL NUMBER OF INTERNAL PARALLEL CIRCUITS MAY BE A MULTIPLE OF THOSE SHOWN ABOVE.
4. LEAD COLORS ARE OPTIONAL. LEADS MUST ALWAYS BE NUMBERED AS SHOWN.

CD0005

REV. DESC: REVISE TO SHOW OPTIONAL COLORS			
REV. LTR: E	BY: JLP	REVISED: 01/19/99 10:15	TDR: 0171435
S00000		FILE: AAA00005140	MDL: -
		MTL: -	

BALDOR ELECTRIC Co.

3PH, DV, 9 LEADS