



Customer information packet

CESSWDM23933T

15HP, 1765RPM, 3PH, 60HZ, 254TC, 3956M, TEFC, F

Class - None

Division - Not Applicable

Specifications

Enclosure	TEFC
Frame	254TC
Frame Material	Stainless Steel
Frequency	60.00 Hz
Haz Area Class and Group	None
Haz Area Division	Not Applicable
Motor Letter Type	Three Phase
Output @ Frequency	15.000 HP @ 60 HZ
Phase	3
Synchronous Speed @ Frequency	1800 RPM @ 60 HZ
Voltage @ Frequency	230.0 V @ 60 HZ 460.0 V @ 60 HZ
Agency Approvals	CSA CSA EEV NEMA PREMIUM NEMA_PREMIUM UR
Ambient Temperature	40 °C
Auxillary Box	No Auxillary Box
Auxillary Box Lead Termination	None
Base Indicator	Rigid
Bearing Grease Type	Polyrex EM (-20F +300F)
Blower	None
Current @ Voltage	35.000 A @ 230.0 V 38.000 A @ 208.0 V 17.500 A @ 460.0 V
Design Code	A
Drip Cover	No Drip Cover
Duty Rating	CONT
Efficiency @ 100% Load	92.4 %
Electrically Isolated Bearing	Not Electrically Isolated
Feedback Device	NO FEEDBACK

Part detail

Revision	AK
Type	AC
Mech. spec.	39E119
Base	
Status	PRD/A
Elec. spec.	39WGX682
Layout	39LYE119
Eff. date	08-02-2024
CD Diagram	CD0005
Poles	04
Leads	9#12
Proprietary	False
Created date	05-21-2009

Front Face Code	Standard
Front Shaft Indicator	None
Heater Indicator	No Heater
High Voltage Full Load Amps	17.5 a
Insulation Class	F
Inverter Code	Inverter Ready
KVA Code	G
Lifting Lugs	Standard Lifting Lugs
Locked Bearing Indicator	Locked Bearing
Motor Lead Exit	Ko Box
Motor Lead Quantity/Wire Size	9 @ 12 AWG
Motor Lead Termination	Flying Leads
Motor Standards	NEMA
Motor Type	3956M
Mounting Arrangement	F1
Number of Poles	4
Overall Length	24.67 IN
Power Factor	86
Product Family	Wash Down All Stainless Steel
Pulley End Bearing Type	Sealed Bearing
Pulley Face Code	Standard
Pulley Shaft Indicator	Standard
Rodent Screen	None
Service Factor	1.15
Shaft Diameter	1.625 IN
Shaft Extension Location	Pulley End
Shaft Ground Indicator	No Shaft Grounding
Shaft Rotation	Reversible
Shaft Slinger Indicator	No Slinger
Speed	1765 rpm
Speed Code	Single Speed
Starting Method	Direct on line
Thermal Device - Bearing	None
Thermal Device - Winding	None

Vibration Sensor Indicator	No Vibration Sensor
Winding Thermal 1	None
Winding Thermal 2	None

Nameplate

NP1953D01									
CAT.NO.	CESSWDM23933T								
SPEC.	39E119X682H2								
HP	15								
VOLTS	230/460								
AMP	35/17.5								
RPM	1765								
FRAME	254TC		HZ	60		PH	3		
SER.F.	1.15	CODE	G	DES	A	CLASS	F		
NEMA-NOM-EFF	92.4	PF	86						
RATING	40C AMB-CONT								
CC	010A	USABLE AT 208V	N/A						
DE	6309	ODE	6208						
ENCL	TEFC	SN							
	2:1 CT/10:1 VT								

Parts list

Part number	Description	Quantity
SA182189	SA 39E119X682H2	1.000 ea
RA170097	RA 39E119X682H2	1.000 ea
09FN3001D01SP	EXTERNAL FAN, PLASTIC (COMES W/SCREW FRO	1.000 ea
WD1000B17	T&B CX35TN OR L35P TERMINAL LUG	1.000 ea
11XW1032S06	10-32 X .38, TAPTITE II, HEX WSHR SLTD U	1.000 ea
39EP1901A01	S.S. FR ENDPLATE, MACH	1.000 ea
HW5100A08	W3118-035 WVY WSHR (WB)	1.000 ea
HW4606A16	PROTECH/SEAL (WDE-1575-2125-BG38)	1.000 ea
39EP1903A01	S.S. C-FACE PU ENDPLATE, MACH	1.000 ea
10XN2520S28	1/4-20X 1 3/4 HEX HD SS X	4.000 ea
HW4606A15	PROTECH/SEAL (WDE-1688-2250-BG37)	1.000 ea
HW3100S01	3/8-16 X 17.25 S.S. ALL THREAD ROD	4.000 ea
XY3816S12	3/8-16 HEX FINISHED NUT SS	8.000 ea
39FH4004A01	304 SS FANCOVER SPUN W/SLOTS & MTG(POLIS	1.000 ea
10XN2520S08	SCREW, 1/4-20 X 1/2 HHCS SS	3.000 ea
HW1001S25	WASHER, 1/4 SPLT LK, STAINLESS STEEL	3.000 ea
09CB1505A01	S.S. LIPPED KOBX LID	1.000 ea
12GS1002	GASKET, CONDUIT BOX LID, NEOP	1.000 ea
10XN3118S12	5/16-18 X 3/4 HEX HEAD CAP, STAINLESS ST	2.000 ea
HW1001S31	WASHER, 5/16 SPLT LK, STAINLESS STEEL	2.000 ea
HW2502G25	#303 SS,SQ KEY 3/8 X 2.880	1.000 ea
MJ5002A01	SILICON RUBBER SEALANT, 732CL 10.3 OZ TU	0.031 ea
MJ5002A02	NON-CORROSIVE SILICONE, DOW 748, 10.3 OZ	0.031 ea
HA5027A01	HA4066A01 T-DRAIN X2 BAGGED	1.000 ea
HW4032A01	BLACK DRAIN PLUG FOR WASH DOWN MOTORS	3.000 ea
MN416A01	TAG-INSTAL-MAINT no wire (2500bx)4/22	1.000 ea
LD7020D09	LEAD SET, 12AWG, 9 LEAD, 20" LONG LEADS	1.000 ea
MJ1000A02	GREASE, POLYREX EM EXXON	0.030 lb
HW4032A01	BLACK DRAIN PLUG FOR WASH DOWN MOTORS	3.000 ea
HW2502F08	KEY, 5/16 SQ X .875 303 SS	1.000 ea
40PA1000	PACKAGING GROUP	1.000 ea

LB1624	COMBINED WARNING LABEL, ISO/ANSI PICTOGR	1.000 ea
FE-0000013	ZRTG FE ASSEMBLY	1.000 ea
PE-0000003	ZRTG PE ASSEMBLY	1.000 ea

AC Induction Motor Performance Data

Record # 48151

Typical performance - not guaranteed values

Winding: 39WGX682-R001		Type: 3956M		Enclosure: TEFC	
Nameplate Data			460 V, 60 Hz: High Voltage Connection		
Rated Output (HP)	15	Full Load Torque	44.6 LB-FT		
Volts	230/460	Start Configuration	direct on line		
Full Load Amps	35/17.5	Breakdown Torque	163 LB-FT		
R.P.M.	1765	Pull-up Torque	52.3 LB-FT		
Hz	60 Phase	3	Locked-rotor Torque	77 LB-FT	
NEMA Design Code	A KVA Code	G	Starting Current	118 A	
Service Factor (S.F.)	1.15	No-load Current	6.54 A		
NEMA Nom. Eff.	92.4 Power Factor	86	Line-line Res. @ 25°C	0.528 Ω	
Rating - Duty	40C AMB-CONT		Temp. Rise @ Rated Load	67°C	
S.F. Amps			Temp. Rise @ S.F. Load	81°C	
			Locked-rotor Power Factor	32	
			Rotor inertia	2.45 lb-ft ²	

Load Characteristics 460 V, 60 Hz, 15 HP

% of Rated Load	25	50	75	100	125	150	S.F.
Power Factor	51	73	82	87	88	89	88
Efficiency	88.6	92.6	92.8	92.6	91.7	90.6	92.1
Speed	1792	1784	1776	1767	1757	1745	1761
Line amperes	7.8	10.4	13.7	17.5	21.7	27.1	20

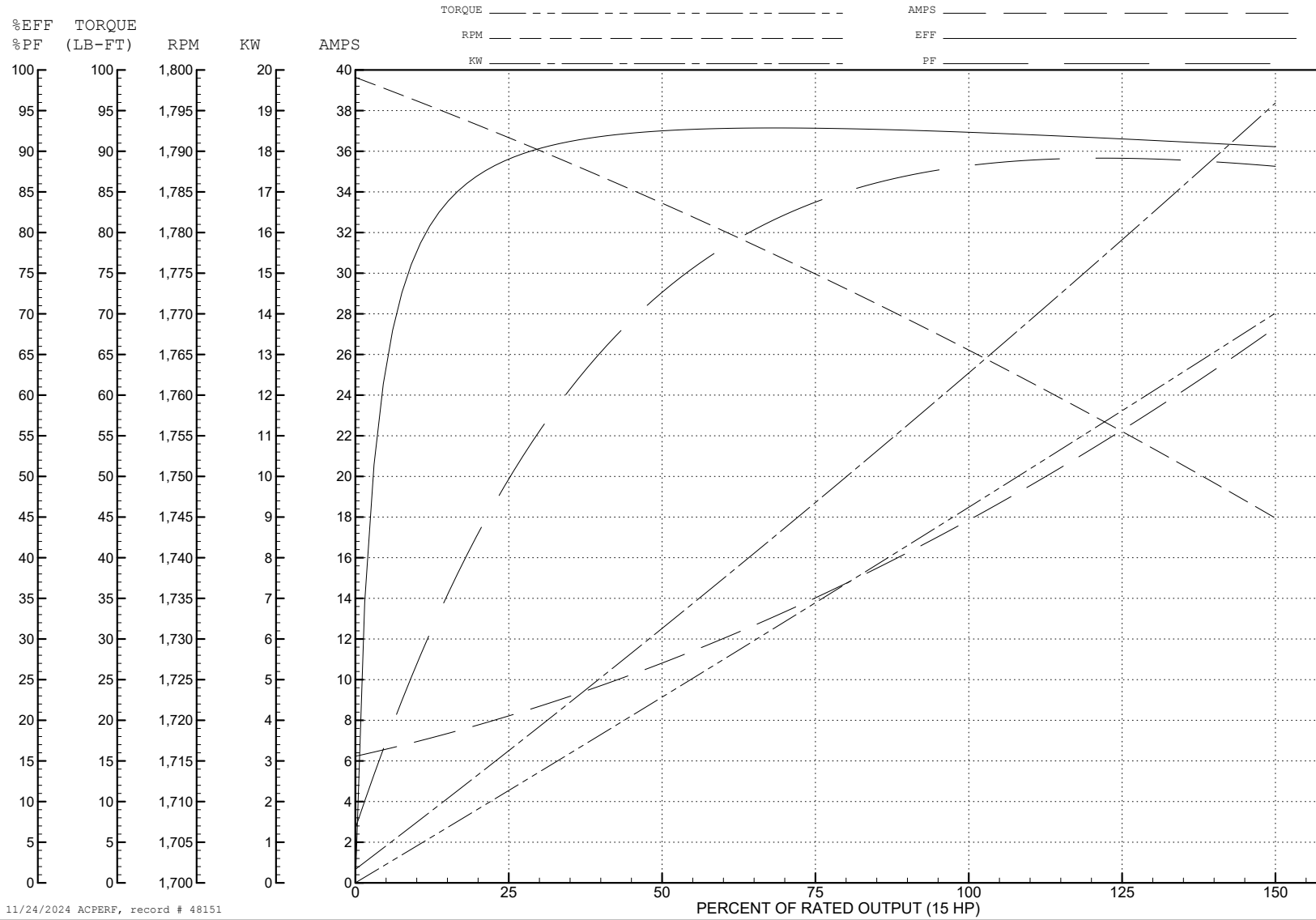
ABB Motors and Mechanical Inc.

WINDING # 39WGX682

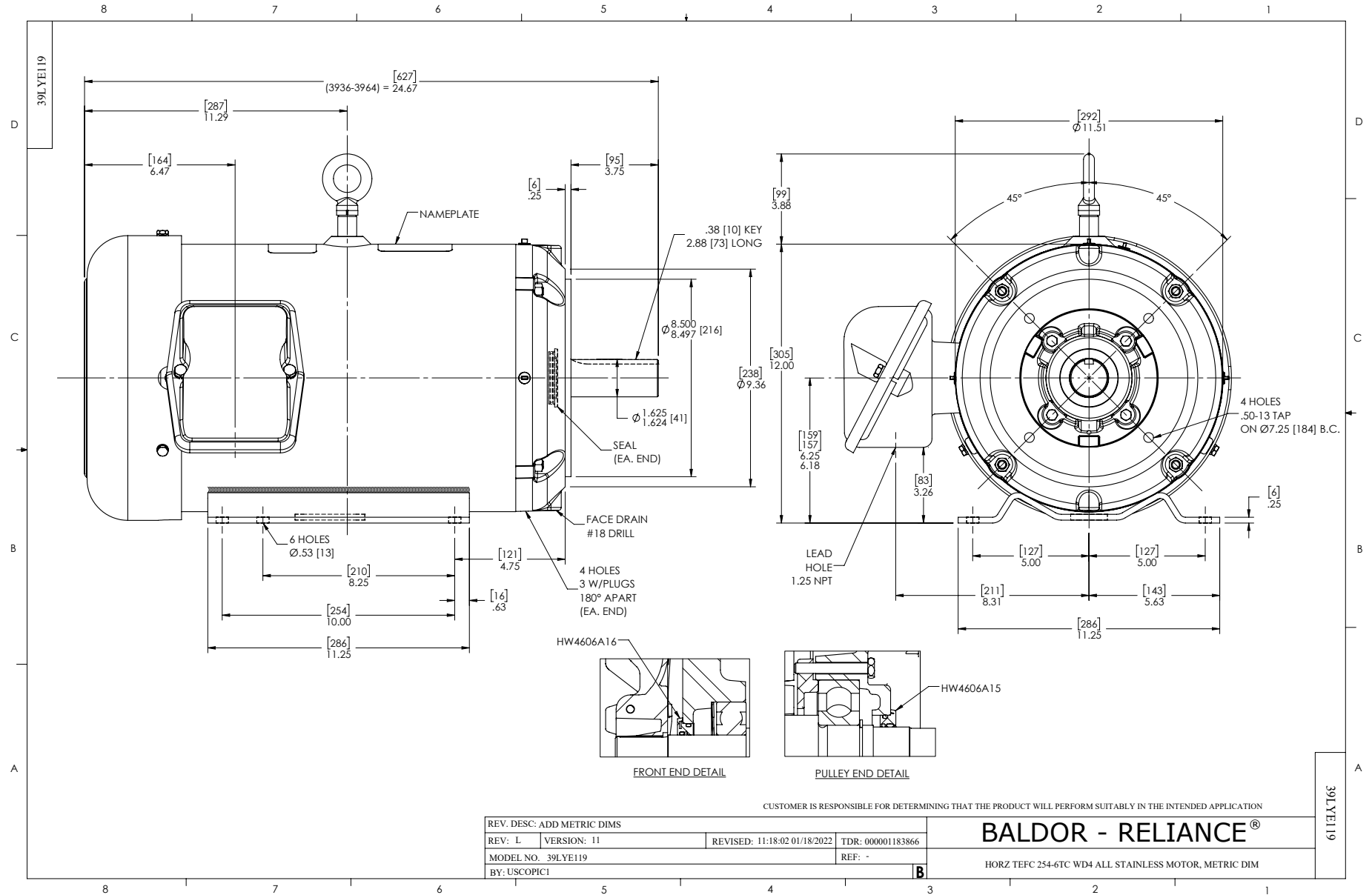
Typical performance - not guaranteed values.

15 HP 3 PH 60 HZ 1765 RPM 460 V 3956M

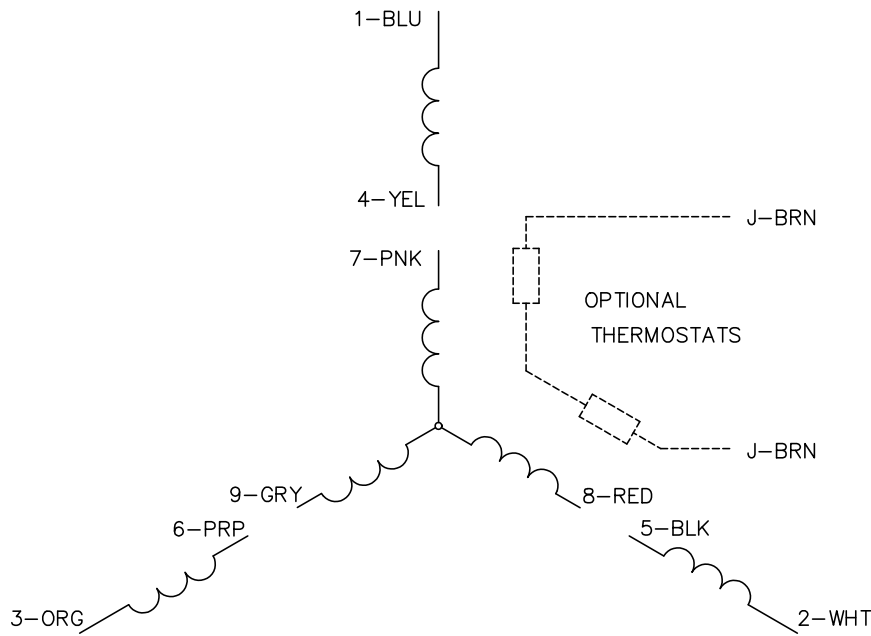
TORQUES (LB-FT): PO=163 PU=52.3 LR=77 LRA=118



11/24/2024 ACPERF, record # 48151



CD0005



LOW VOLTAGE
(2Y)



LINE

HIGH VOLTAGE
(1Y)



LINE

NOTES:

1. INTERCHANGE ANY TWO LINE LEADS TO REVERSE ROTATION.
2. OPTIONAL THERMOSTATS ARE PROVIDED WHEN SPECIFIED.
3. ACTUAL NUMBER OF INTERNAL PARALLEL CIRCUITS MAY BE A MULTIPLE OF THOSE SHOWN ABOVE.
4. LEAD COLORS ARE OPTIONAL. LEADS MUST ALWAYS BE NUMBERED AS SHOWN.

CD0005

REV. DESC: REVISE TO SHOW OPTIONAL COLORS			
REV. LTR: E	BY: JLP	REVISED: 01/19/99 10:15	TDR: 0171435
S00000		FILE: AAA00005140	MDL: -
		MTL: -	

BALDOR ELECTRIC Co.

3PH, DV, 9 LEADS