

**BALDOR • RELIANCE**

---

# Customer information packet

## CESSWDM23994T

15HP, 3520RPM, 3PH, 60HZ, 254TC, 3952M, TEFC, F

Class -

Division - Not Applicable

Copyright © All product information within this document is subject to ABB Motors and Mechanical Inc. copyright © protection, unless otherwise noted.

11/24/2024 11:35:22 PM

## Specifications

Enclosure	TEFC
Frame	254TC
Frame Material	Stainless Steel
Frequency	60.00 Hz
Haz Area Division	Not Applicable
Motor Letter Type	Three Phase
Output @ Frequency	15.000 HP @ 60 HZ
Phase	3
Synchronous Speed @ Frequency	3600 RPM @ 60 HZ
Voltage @ Frequency	460.0 V @ 60 HZ 230.0 V @ 60 HZ
Agency Approvals	CSA UR
Ambient Temperature	40 °C
Auxillary Box	No Auxillary Box
Auxillary Box Lead Termination	None
Base Indicator	Rigid
Bearing Grease Type	Polyrex EM (-20F +300F)
Blower	None
Current @ Voltage	16.500 A @ 460.0 V 33.000 A @ 230.0 V 36.000 A @ 208.0 V
Design Code	A
Drip Cover	No Drip Cover
Duty Rating	CONT
Efficiency @ 100% Load	91.0 %
Electrically Isolated Bearing	Not Electrically Isolated
Feedback Device	NO FEEDBACK
Front Face Code	Standard
Front Shaft Indicator	None
Heater Indicator	No Heater
High Voltage Full Load Amps	16.5 a

## Part detail

Revision	AS
Type	AC
Mech. spec.	39E119
Base	
Status	PRD/A
Elec. spec.	39WGX633
Layout	39LYE119
Eff. date	08-02-2024
CD Diagram	CD0005
Poles	02
Leads	9#12
Proprietary	False
Created date	03-18-2008

<b>Insulation Class</b>	F
<b>Inverter Code</b>	Inverter Ready
<b>KVA Code</b>	J
<b>Lifting Lugs</b>	Standard Lifting Lugs
<b>Locked Bearing Indicator</b>	Locked Bearing
<b>Motor Lead Exit</b>	Ko Box
<b>Motor Lead Quantity/Wire Size</b>	9 @ 12 AWG
<b>Motor Lead Termination</b>	Flying Leads
<b>Motor Standards</b>	NEMA
<b>Motor Type</b>	3952M
<b>Mounting Arrangement</b>	F1
<b>Number of Poles</b>	2
<b>Overall Length</b>	24.67 IN
<b>Power Factor</b>	92
<b>Product Family</b>	Wash Down All Stainless Steel
<b>Pulley End Bearing Type</b>	Sealed Bearing
<b>Pulley Face Code</b>	Standard
<b>Pulley Shaft Indicator</b>	Standard
<b>Rodent Screen</b>	None
<b>Service Factor</b>	1.15
<b>Shaft Diameter</b>	1.625 IN
<b>Shaft Extension Location</b>	Pulley End
<b>Shaft Ground Indicator</b>	No Shaft Grounding
<b>Shaft Rotation</b>	Reversible
<b>Shaft Slinger Indicator</b>	Shaft Slinger
<b>Speed</b>	3520 rpm
<b>Speed Code</b>	Single Speed
<b>Starting Method</b>	Direct on line
<b>Thermal Device - Bearing</b>	None
<b>Thermal Device - Winding</b>	None
<b>Vibration Sensor Indicator</b>	No Vibration Sensor
<b>Winding Thermal 1</b>	None
<b>Winding Thermal 2</b>	None

**Nameplate**

<b>NP1953D01</b>									
<b>CAT.NO.</b>	CESSWDM23994T								
<b>SPEC.</b>	39E119X633G1								
<b>HP</b>	15								
<b>VOLTS</b>	230/460								
<b>AMP</b>	33/16.5								
<b>RPM</b>	3520								
<b>FRAME</b>	254TC		<b>HZ</b>	60		<b>PH</b>	3		
<b>SER.F.</b>	1.15	<b>CODE</b>	J	<b>DES</b>	A	<b>CLASS</b>	F		
<b>NEMA-NOM-EFF</b>	91	<b>PF</b>	92						
<b>RATING</b>	40C AMB-CONT								
<b>CC</b>	010A	<b>USABLE AT 208V</b>	N/A						
<b>DE</b>	6309	<b>ODE</b>	6208						
<b>ENCL</b>	TEFC	<b>SN</b>							
	2:1 CT/10:1 VT								

## Parts list

Part number	Description	Quantity
SA169249	SA 39E119X633G1	1.000 ea
RA157525	RA 39E119X633G1	1.000 ea
09FN3001C01SP	EXTERNAL FAN, PLASTIC (COMES W/SCREW FRO	1.000 ea
WD1000B17	T&B CX35TN OR L35P TERMINAL LUG	1.000 ea
11XW1032S06	10-32 X .38, TAPTITE II, HEX WSHR SLTD U	1.000 ea
39EP1901A01	S.S. FR ENDPLATE, MACH	1.000 ea
HW5100A08	W3118-035 WVY WSHR (WB)	1.000 ea
HW4606A16	PROTECH/SEAL (WDE-1575-2125-BG38)	1.000 ea
39EP1903A01	S.S. C-FACE PU ENDPLATE, MACH	1.000 ea
10XN2520S28	1/4-20X 1 3/4 HEX HD SS X	4.000 ea
HW4606A15	PROTECH/SEAL (WDE-1688-2250-BG37)	1.000 ea
HW3100S01	3/8-16 X 17.25 S.S. ALL THREAD ROD	4.000 ea
XY3816S12	3/8-16 HEX FINISHED NUT SS	8.000 ea
39FH4004A01	304 SS FANCOVER SPUN W/SLOTS & MTG(POLIS	1.000 ea
10XN2520S08	SCREW, 1/4-20 X 1/2 HHCS SS	3.000 ea
HW1001S25	WASHER, 1/4 SPLT LK, STAINLESS STEEL	3.000 ea
09CB1505A01	S.S. LIPPED KOBX LID	1.000 ea
12GS1002	GASKET, CONDUIT BOX LID, NEOP	1.000 ea
10XN3118S12	5/16-18 X 3/4 HEX HEAD CAP, STAINLESS ST	2.000 ea
HW1001S31	WASHER, 5/16 SPLT LK, STAINLESS STEEL	2.000 ea
HW2502G25	#303 SS,SQ KEY 3/8 X 2.880	1.000 ea
MJ5002A01	SILICON RUBBER SEALANT, 732CL 10.3 OZ TU	0.031 ea
MJ5002A02	NON-CORROSIVE SILICONE, DOW 748, 10.3 OZ	0.031 ea
HA5027A01	HA4066A01 T-DRAIN X2 BAGGED	1.000 ea
HW4032A01	BLACK DRAIN PLUG FOR WASH DOWN MOTORS	3.000 ea
MN416A01	TAG-INSTAL-MAINT no wire (2500bx)4/22	1.000 ea
LD7020D09	LEAD SET, 12AWG, 9 LEAD, 20" LONG LEADS	1.000 ea
MJ1000A02	GREASE, POLYREX EM EXXON	0.030 lb
HW4032A01	BLACK DRAIN PLUG FOR WASH DOWN MOTORS	3.000 ea
HW2502F08	KEY, 5/16 SQ X .875 303 SS	1.000 ea
40PA1000	PACKAGING GROUP	1.000 ea

LB1624	COMBINED WARNING LABEL, ISO/ANSI PICTOGR	1.000 ea
FE-0000013	ZRTG FE ASSEMBLY	1.000 ea
PE-0000003	ZRTG PE ASSEMBLY	1.000 ea

**AC Induction Motor Performance Data**

Record # 35516

Typical performance - not guaranteed values

<b>Winding: 39WGX633-R002</b>		<b>Type: 3952M</b>		<b>Enclosure: TEFC</b>	
<b>Nameplate Data</b>			<b>460 V, 60 Hz: High Voltage Connection</b>		
<b>Rated Output (HP)</b>	15	<b>Full Load Torque</b>	22.1 LB-FT		
<b>Volts</b>	230/460	<b>Start Configuration</b>	direct on line		
<b>Full Load Amps</b>	33/16.5	<b>Breakdown Torque</b>	100 LB-FT		
<b>R.P.M.</b>	3520	<b>Pull-up Torque</b>	36.4 LB-FT		
<b>Hz</b>	60	<b>Locked-rotor Torque</b>	47.4 LB-FT		
<b>NEMA Design Code</b>	A	<b>Starting Current</b>	145 A		
<b>Service Factor (S.F.)</b>	1.15	<b>No-load Current</b>	4.77 A		
<b>NEMA Nom. Eff.</b>	91	<b>Line-line Res. @ 25°C</b>	0.467 Ω		
<b>Rating - Duty</b>	40C AMB-CONT	<b>Temp. Rise @ Rated Load</b>	73°C		
<b>S.F. Amps</b>		<b>Temp. Rise @ S.F. Load</b>	87°C		
		<b>Locked-rotor Power Factor</b>	27.2		
		<b>Rotor inertia</b>	1.33 LB-FT <sup>2</sup>		

**Load Characteristics 460 V, 60 Hz, 15 HP**

<b>% of Rated Load</b>	<b>25</b>	<b>50</b>	<b>75</b>	<b>100</b>	<b>125</b>	<b>150</b>	<b>S.F.</b>
<b>Power Factor</b>	66	84	90	92	93	93	93
<b>Efficiency</b>	83.9	89.6	91.1	91.3	90.8	90.1	91
<b>Speed</b>	3579	3563	3546	3528	3507	3486	3515
<b>Line amperes</b>	6.39	9.25	12.8	16.5	20.6	24.9	19

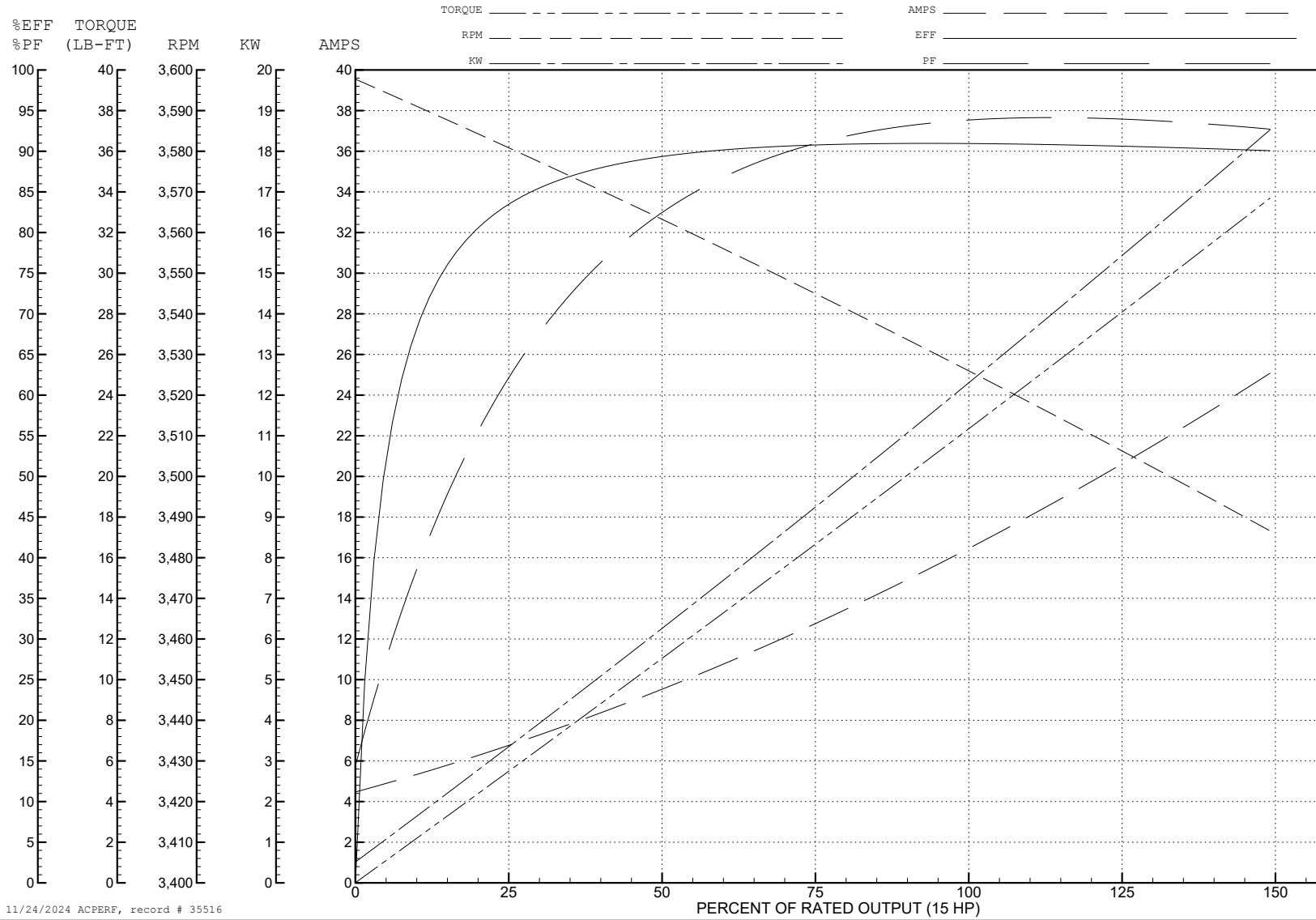
ABB Motors and Mechanical Inc.

WINDING # 39WGx633

Typical performance - not guaranteed values.

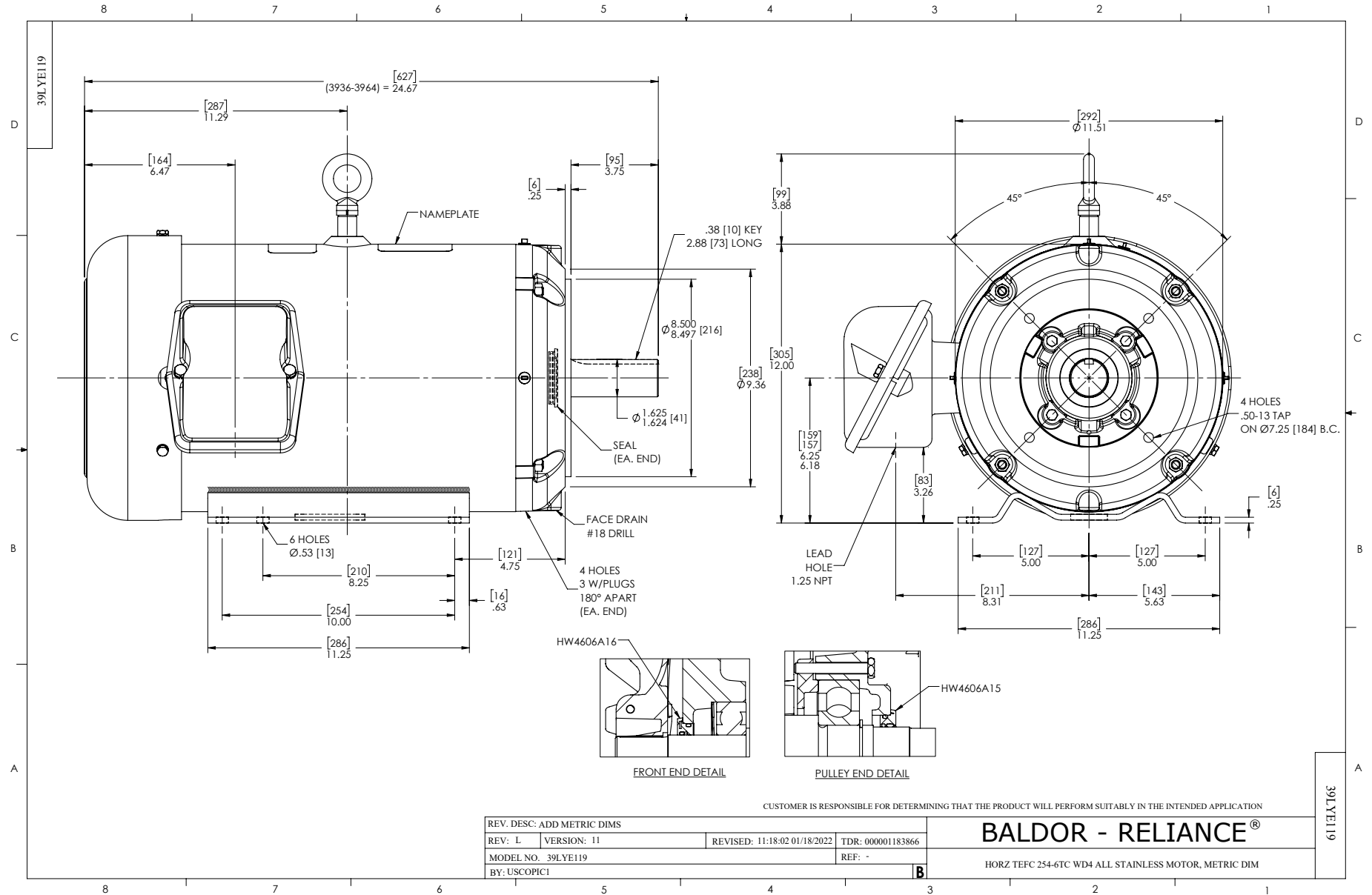
15 HP 3 PH 60 HZ 3520 RPM 460 V 3952M

TORQUES (LB-FT): PO=100 PU=36.4 LR=47.4 LRA=145



11/24/2024 ACPERF, record # 35516





CD0005



LOW VOLTAGE  
(2Y)



LINE

HIGH VOLTAGE  
(1Y)



LINE

**NOTES:**

1. INTERCHANGE ANY TWO LINE LEADS TO REVERSE ROTATION.
2. OPTIONAL THERMOSTATS ARE PROVIDED WHEN SPECIFIED.
3. ACTUAL NUMBER OF INTERNAL PARALLEL CIRCUITS MAY BE A MULTIPLE OF THOSE SHOWN ABOVE.
4. LEAD COLORS ARE OPTIONAL. LEADS MUST ALWAYS BE NUMBERED AS SHOWN.

CD0005

REV. DESC: REVISE TO SHOW OPTIONAL COLORS			
REV. LTR: E	BY: JLP	REVISED: 01/19/99 10:15	TDR: 0171435
S00000		FILE: AAA00005140	MDL: -
		MTL: -	

**BALDOR ELECTRIC Co.**

3PH, DV, 9 LEADS