



Customer information packet

CESSWDM3558T-5

2HP, 1765RPM, 3PH, 60HZ, 145TC, 3528M, TEFC, F1

Class - None

Division - Not Applicable

Specifications

| | |
|--------------------------------|-------------------------------|
| Enclosure | TEFC |
| Frame | 145TC |
| Frame Material | Stainless Steel |
| Frequency | 60.00 Hz |
| Haz Area Class and Group | None |
| Haz Area Division | Not Applicable |
| Motor Letter Type | Three Phase |
| Output @ Frequency | 2.000 HP @ 60 HZ |
| Phase | 3 |
| Synchronous Speed @ Frequency | 1800 RPM @ 60 HZ |
| Voltage @ Frequency | 575.0 V @ 60 HZ |
| Agency Approvals | CSA EEV NEMA PREMIUM UR |
| Ambient Temperature | 40 °C |
| Auxillary Box | No Auxillary Box |
| Auxillary Box Lead Termination | None |
| Base Indicator | Rigid |
| Bearing Grease Type | Polyrex EM (-20F +300F) |
| Blower | None |
| Current @ Voltage | 2.150 A @ 575.0 V |
| Design Code | B |
| Drip Cover | No Drip Cover |
| Duty Rating | CONT |
| Efficiency @ 100% Load | 86.5 % |
| Electrically Isolated Bearing | Not Electrically Isolated |
| Feedback Device | NO FEEDBACK |
| Front Shaft Indicator | None |
| Heater Indicator | No Heater |
| High Voltage Full Load Amps | 2.2 a |
| Insulation Class | H |
| Inverter Code | Not Inverter |

Part detail

| | |
|--------------|------------|
| Revision | A |
| Type | AC |
| Mech. spec. | 35VV818 |
| Base | |
| Status | PRD/A |
| Elec. spec. | 35WGZ823 |
| Layout | 35LYVV818 |
| Eff. date | 08-14-2023 |
| CD Diagram | CD0006 |
| Poles | 04 |
| Leads | 3#18 |
| Proprietary | False |
| Created date | 03-11-2022 |

| | |
|--------------------------------------|-------------------------------|
| KVA Code | L |
| Lifting Lugs | No Lifting Lugs |
| Locked Bearing Indicator | Locked Bearing |
| Motor Lead Quantity/Wire Size | 3 @ 18 AWG |
| Motor Lead Termination | Flying Leads |
| Motor Standards | NEMA |
| Motor Type | 3528M |
| Mounting Arrangement | F1 |
| Number of Poles | 4 |
| Overall Length | 13.42 IN |
| Power Factor | 81 |
| Product Family | Wash Down All Stainless Steel |
| Pulley End Bearing Type | Sealed Bearing |
| Pulley Face Code | C-Face |
| Pulley Shaft Indicator | Standard |
| Rodent Screen | None |
| Service Factor | 1.15 |
| Shaft Diameter | 0.875 IN |
| Shaft Ground Indicator | No Shaft Grounding |
| Shaft Rotation | Reversible |
| Shaft Slinger Indicator | No Slinger |
| Speed | 1765 rpm |
| Speed Code | Single Speed |
| Starting Method | Direct on line |
| Thermal Device - Bearing | None |
| Thermal Device - Winding | None |
| Vibration Sensor Indicator | No Vibration Sensor |
| Winding Thermal 1 | None |
| Winding Thermal 2 | None |

Nameplate

| NP1953A05 | | | | | | | | | |
|---------------------|----------------|-----------------------|-----------|------------|---|--------------|---|--|--|
| CAT.NO. | CESSWDM3558T-5 | | | | | | | | |
| SPEC. | 35VV818Z823G1 | | | | | | | | |
| HP | 2 | | | | | | | | |
| VOLTS | 575 | | | | | | | | |
| AMP | 2.15 | | | | | | | | |
| RPM | 1765 | | | | | | | | |
| FRAME | 145TC | | HZ | 60 | | PH | 3 | | |
| SER.F. | 1.15 | CODE | L | DES | B | CLASS | H | | |
| NEMA-NOM-EFF | 86.5 | PF | 81 | | | | | | |
| RATING | 40C AMB-CONT | | | | | | | | |
| CC | 010A | USABLE AT 208V | N/A | | | | | | |
| DE | 6205 | ODE | 6203 | | | | | | |
| ENCL | TEFC | SN | | | | | | | |
| | SFA 2.45 | | | | | | | | |

Parts list

| Part number | Description | Quantity |
|-------------|--|----------|
| SA411403 | SA 35VV818Z823G1 | 1.000 ea |
| RA403045 | RA 35VV818Z823G1 | 1.000 ea |
| 34FN3002B01 | EXTERNAL FAN, PLASTIC, .637/.639 HUB W/ | 1.000 ea |
| NS2512A01 | INSULATOR, CONDUIT BOX X | 1.000 ea |
| 35CB5001A17 | KOBX KIT, (ALL STAINLESS) W/ .75 NPT | 1.000 ea |
| HA5027A02 | HA4054 T-DRAIN X2 BAGGED WITH LABEL | 1.000 ea |
| 11XW1032G06 | 10-32 X .38, TAPTITE II, HEX WSHR SLTD U | 1.000 ea |
| HW3001B01 | BRASS CUP WASHER, FOR #10 SCREW | 1.000 ea |
| 35EP1913A02 | FR EP MADE FROM 35EP1913A01 | 1.000 ea |
| HW4500S33 | 1/8 NPT STAINLESS #304 SS PLUG | 3.000 ea |
| HW4606A01 | JM CLIPPER/SEAL (WDE-0667-1064-BH49) | 1.000 ea |
| HW5100A03 | WAVY WASHER (W1543-017) | 1.000 ea |
| 35EP1914A02 | PU EP FOR LOCKED 6205 BRG | 1.000 ea |
| HW4500S33 | 1/8 NPT STAINLESS #304 SS PLUG | 3.000 ea |
| HW4606A02 | JM CLIPPER/SEAL (LWE-0938-1624-AL23) | 1.000 ea |
| 12XN1032S22 | 10-32 X 1 3/8 SLOT HEX, STAINLESS STEEL | 2.000 ea |
| HA1049A01 | DUBO LOK WASHER SIZE 10 (NYLON LOCK SEAL | 2.000 ea |
| HA1049A01 | DUBO LOK WASHER SIZE 10 (NYLON LOCK SEAL | 4.000 ea |
| 51XB1214A16 | 12-14X1.00 HXWSSLD SERTYB | 1.000 ea |
| 35FH4005A39 | IEC FH NO GREASER DEBURR/CLEAN - SS | 1.000 ea |
| 10XN1032S06 | HEX HD CAP SCREW, SS | 3.000 ea |
| HW2502D13 | SS KEY, 3/16 SQ X 1.375 | 1.000 ea |
| HA7000A01 | KEY RETAINER 7/8" DIA SHAFT | 1.000 ea |
| MJ5001A02 | 732 CL SEALANT 3 OZ DIXIE BEARING 289100 | 0.001 ea |
| HA3100S14 | THRUBOLT 10X32 X 8.875 302 OR 303 SS | 4.000 ea |
| 36PA1000 | PKG GRP, PRINT PK1016A06 | 1.000 ea |
| MN416A01 | TAG-INSTAL-MAINT no wire (2500bx)4/22 | 1.000 ea |
| 51XB1214A16 | 12-14X1.00 HXWSSLD SERTYB | 1.000 ea |
| HW3001B01 | BRASS CUP WASHER, FOR #10 SCREW | 1.000 ea |
| MJ1000A02 | GREASE, POLYREX EM EXXON | 0.050 lb |
| FE-0000007 | ZRTG FE ASSEMBLY | 1.000 ea |

PE-0000012

ZRTG PE ASSEMBLY

1.000 ea

AC Induction Motor Performance Data

Record # 88444

Preliminary Data Sheet

| Winding: 35WGZ823-R001 | | Type: 3528M | | Enclosure: TEFC | |
|-------------------------------|------|---------------------|---|----------------------------------|--------------------------|
| Nameplate Data | | | 575 V, 60 Hz: Single Voltage Motor | | |
| Rated Output (HP) | | 2 | Full Load Torque | | 5.95 LB-FT |
| Volts | | 575 | Start Configuration | | direct on line |
| Full Load Amps | | 2.15 | Breakdown Torque | | 22.1 LB-FT |
| R.P.M. | | 1765 | Pull-up Torque | | 13.1 LB-FT |
| Hz | 60 | Phase | 3 | Locked-rotor Torque | 15.85 LB-FT |
| NEMA Design Code | B | KVA Code | K | Starting Current | 18.31 A |
| Service Factor (S.F.) | | 1.15 | No-load Current | | 1.15 A |
| NEMA Nom. Eff. | 86.5 | Power Factor | 81 | Line-line Res. @ 25°C | 15.5 Ω |
| Rating - Duty | | 40C | AMB-CONT | Temp. Rise @ Rated Load | 81°C |
| S.F. Amps | | 2.45 | | Temp. Rise @ S.F. Load | 98°C |
| | | | | Locked-rotor Power Factor | 57 |
| | | | | Rotor inertia | 0.202 lb-ft ² |

Load Characteristics 575 V, 60 Hz, 2 HP

| % of Rated Load | 25 | 50 | 75 | 100 | 125 | 150 | S.F. |
|------------------------|-----------|-----------|-----------|------------|------------|------------|-------------|
| Power Factor | 39 | 60 | 73 | 80 | 84 | 86 | 82 |
| Efficiency | 80.1 | 86.2 | 87.3 | 86.9 | 85.6 | 83.9 | 86.1 |
| Speed | 1791 | 1783 | 1773 | 1765 | 1755 | 1742 | 1759 |
| Line amperes | 1.23 | 1.45 | 1.76 | 2.15 | 2.62 | 3.1 | 2.43 |

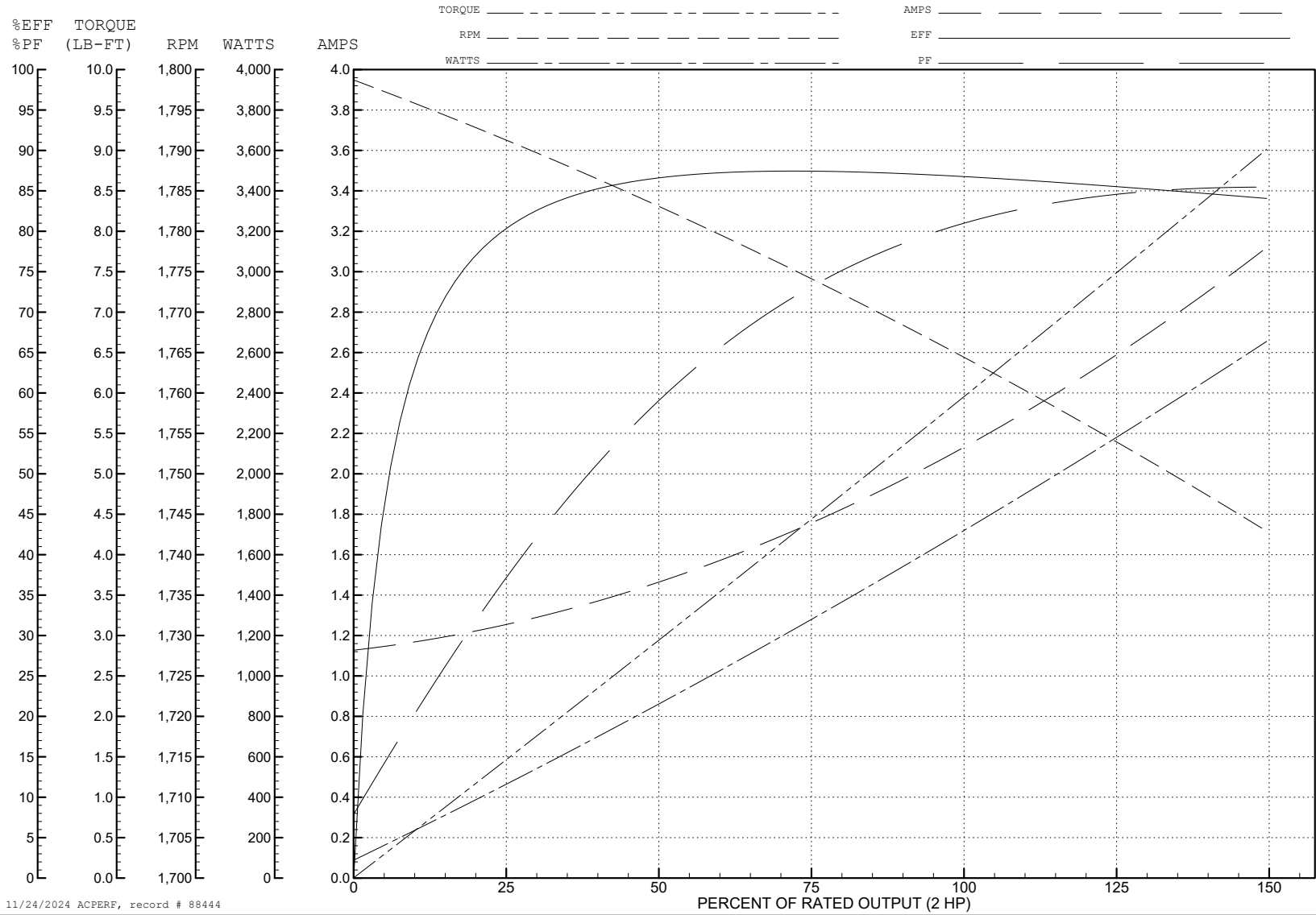
ABB Motors and Mechanical Inc.

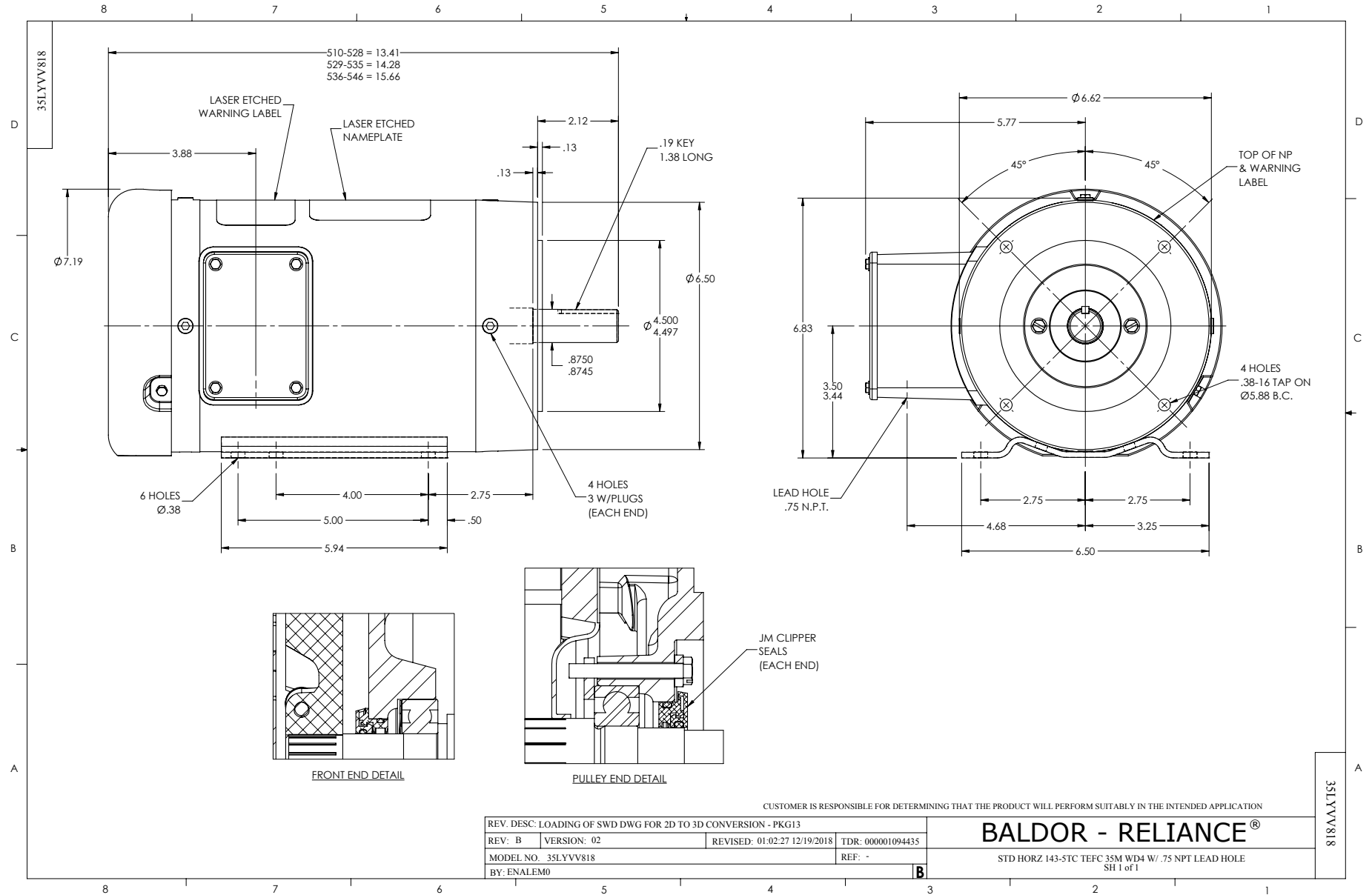
WINDING # 35WGZ823

Typical performance - not guaranteed values.

2 HP 3 PH 60 HZ 1765 RPM 575 V 3528M

TORQUES (LB-FT): PO=22.1 PU=13.1 LR=15.85 LRA=18.31





CD0006



NOTES:

1. THREE LEAD MOTOR MAY BE EITHER WYE CONNECTED OR DELTA CONNECTED.
2. INTERCHANGE ANY TWO LINE LEADS TO REVERSE ROTATION.
3. OPTIONAL THERMOSTATS ARE PROVIDED WHEN SPECIFIED.
4. ACTUAL NUMBER OF INTERNAL PARALLEL CIRCUITS MAY VARY.
5. LEAD COLORS ARE OPTIONAL. LEADS MUST BE NUMBERED AS SHOWN.

CD0006

| | | |
|-----------------------------------|------------------------------|-------------------|
| REV. DESC: ADD CLASS CONN00000007 | | |
| REV. LTR: E | VERSION: 01 | TDR: 000001099922 |
| FILE: \AAA\00005\141 | REVISED: 10:24:49 02/19/2019 | BY: ENBRIRO |
| MTL: - | © □ | |

BALDOR - RELIANCE®

3PH, SV, 3 LEADS, WYE OR DELTA CONNECTED

SH 1 of 1