

BALDOR • RELIANCE

Customer information packet

CESSWDM3709T

7.5HP, 3500RPM, 3PH, 60HZ, 213TC, 3734M, TEFC

Class - None

Division - Not Applicable

Specifications

Enclosure	TEFC
Frame	213TC
Frame Material	Stainless Steel
Frequency	60.00 Hz
Haz Area Class and Group	None
Haz Area Division	Not Applicable
Motor Letter Type	Three Phase
Output @ Frequency	7.500 HP @ 60 HZ
Phase	3
Synchronous Speed @ Frequency	3600 RPM @ 60 HZ
Voltage @ Frequency	230.0 V @ 60 HZ 460.0 V @ 60 HZ
Agency Approvals	UR CSA
Ambient Temperature	40 °C
Auxillary Box	No Auxillary Box
Auxillary Box Lead Termination	None
Base Indicator	Rigid
Bearing Grease Type	Polyrex EM (-20F +300F)
Blower	None
Current @ Voltage	16.600 A @ 230.0 V 17.900 A @ 208.0 V 8.300 A @ 460.0 V
Design Code	A
Drip Cover	No Drip Cover
Duty Rating	CONT
Efficiency @ 100% Load	91.0 %
Electrically Isolated Bearing	Not Electrically Isolated
Feedback Device	NO FEEDBACK
Front Face Code	Standard
Front Shaft Indicator	None
Heater Indicator	No Heater

Part detail

Revision	AE
Type	AC
Mech. spec.	37J639
Base	
Status	PRD/A
Elec. spec.	37WGT384
Layout	37LYJ639
Eff. date	02-10-2023
CD Diagram	CD0005
Poles	02
Leads	9#14
Proprietary	False
Created date	07-19-2006

High Voltage Full Load Amps	8.3 a
Insulation Class	F
Inverter Code	Inverter Ready
KVA Code	K
Lifting Lugs	Standard Lifting Lugs
Locked Bearing Indicator	Locked Bearing
Motor Lead Exit	Ko Box
Motor Lead Quantity/Wire Size	9 @ 14 AWG
Motor Lead Termination	Flying Leads
Motor Standards	NEMA
Motor Type	3734M
Mounting Arrangement	F1
Number of Poles	2
Overall Length	19.03 IN
Power Factor	93
Product Family	Wash Down All Stainless Steel
Pulley End Bearing Type	Sealed Bearing
Pulley Face Code	C-Face
Pulley Shaft Indicator	Standard
Rodent Screen	None
RoHS Status	ROHS COMPLIANT
Service Factor	1.15
Shaft Diameter	1.375 IN
Shaft Extension Location	Pulley End
Shaft Ground Indicator	No Shaft Grounding
Shaft Rotation	Reversible
Shaft Slinger Indicator	No Slinger
Speed	3500 rpm
Speed Code	Single Speed
Starting Method	Direct on line
Thermal Device - Bearing	None
Thermal Device - Winding	None
Vibration Sensor Indicator	No Vibration Sensor
Winding Thermal 1	None

Winding Thermal 2

None

Nameplate

NP1953C01									
CAT.NO.	CESSWDM3709T								
SPEC.	37J639T384G1								
HP	7.5								
VOLTS	230/460								
AMP	16.6/8.3								
RPM	3500								
FRAME	213TC		HZ	60		PH	3		
SER.F.	1.15	CODE	K	DES	A	CLASS	F		
NEMA-NOM-EFF	91	PF	93						
RATING	40C AMB-CONT								
CC	010A	USABLE AT 208V	N/A						
DE	6307	ODE	6206						
ENCL	TEFC	SN							
	4:1CT 20:1VT								

Parts list

Part number	Description	Quantity
SA147562	SA 37J639T384G1	1.000 ea
RA136603	RA 37J639T384G1	1.000 ea
36FN3000C02SP	EXFN, PLASTIC, 5.25 OD, 1.175 ID	1.000 ea
HW3200S01	EYEBOLT 3/8-16 X3/4 S.S. TDR #35988	1.000 ea
37CB1004A01	CONDUIT BOX, MACH	1.000 ea
37GS3011	1/8"WHITE NEOPRENE BOX GS	1.000 ea
51XW2520A12	.25-20 X .75, TAPTITE II, HEX WSHR SLTD	2.000 ea
HA5027A02	HA4054 T-DRAIN X2 BAGGED WITH LABEL	1.000 ea
11XW1032G06	10-32 X .38, TAPTITE II, HEX WSHR SLTD U	1.000 ea
HW3001B02	BRASS CUP WASHER W/GROUND SYMBOL TAB,	1.000 ea
37EP1907A01	FRONT TEFC 206 BRG NO GR SR S/P 9-2 (STAI	1.000 ea
HW4500S33	1/8 NPT STAINLESS #304 SS PLUG	3.000 ea
HW4606A03	JM CLIPPER/SEAL (LWE-1156-1875-AL44)	1.000 ea
HW5100A06	W2420-025 WVY WSHR (WB)	1.000 ea
37EP1908A02	PU EP FOR LOCKED 307 BRG	1.000 ea
HW4500S33	1/8 NPT STAINLESS #304 SS PLUG	3.000 ea
HW4606A04	JM CLIPPER/SEAL (LWE-1376-2125-AL45)	1.000 ea
10XN2520S32	1/4-20 X 2 HEX HEAD SS	4.000 ea
XY3118S12	5/16-18 HEX NUT, STAINLESS STEEL	4.000 ea
37FH4000A45	STAINLESS FAN COVER, NO GREASER SLOT (FO	1.000 ea
10XN1032S06	HEX HD CAP SCREW, SS	3.000 ea
36CB4517	LIPPED CB LID #304 STAINLESS - CLEANED	1.000 ea
37GS3010SP	1/16"WHITE LID GASKET	1.000 ea
59XN0832S07	8/32 X 7/16 HX WS HD SER X	4.000 ea
HW2502F21	#303 SS,SQ KEY 5/16 X 2.375	1.000 ea
HA7000A02	KEY RETAINER RING, 1 1/8 DIA, 1 3/8 DIA	1.000 ea
MJ5001A02	732 CL SEALANT 3 OZ DIXIE BEARING 289100	0.001 ea
MJ1000A02	GREASE, POLYREX EM EXXON	0.050 lb
51XB1214A20	12-14X1.25 HXWSSLD SERTYB	1.000 ea
HA3104S32	THRUBOLT 5/16-18X12.75 SS	4.000 ea
37PA1074	PALLET PACK GRP, PRINT BOX PK1026A06	1.000 ea

MN416A01	TAG-INSTAL-MAINT no wire (2500bx)4/22	1.000 ea
FE-0000007	ZRTG FE ASSEMBLY	1.000 ea
PE-0000012	ZRTG PE ASSEMBLY	1.000 ea

AC Induction Motor Performance Data

Record # 11724

Typical performance - not guaranteed values

Winding: 37WGT384-R001		Type: 3734M	Enclosure: TEFC	
Nameplate Data			460 V, 60 Hz: High Voltage Connection	
Rated Output (HP)	7.5	Full Load Torque	11.5 LB-FT	
Volts	230/460	Start Configuration	direct on line	
Full Load Amps	16.6/8.3	Breakdown Torque	66.3 LB-FT	
R.P.M.	3500	Pull-up Torque	25.8 LB-FT	
Hz	60 Phase	3	Locked-rotor Torque	36.7 LB-FT
NEMA Design Code	A KVA Code	K	Starting Current	86.2 A
Service Factor (S.F.)	1.15	No-load Current	3.25 A	
NEMA Nom. Eff.	91 Power Factor	93	Line-line Res. @ 25°C	0.913 Ω
Rating - Duty	40C AMB-CONT	Temp. Rise @ Rated Load	47°C	
S.F. Amps		Temp. Rise @ S.F. Load	56°C	
		Locked-rotor Power Factor	32.4	
		Rotor inertia	0.311 LB-FT ²	

Load Characteristics 460 V, 60 Hz, 7.5 HP

% of Rated Load	25	50	75	100	125	150	S.F.
Power Factor	62	85	89	94	95	100	95
Efficiency	84.7	90.9	92.1	92	91.4	90.7	91.6
Speed	3584	3564	3541	3520	3498	3481	3507
Line amperes	3.54	4.72	6.63	8.32	10.3	11.8	9.5

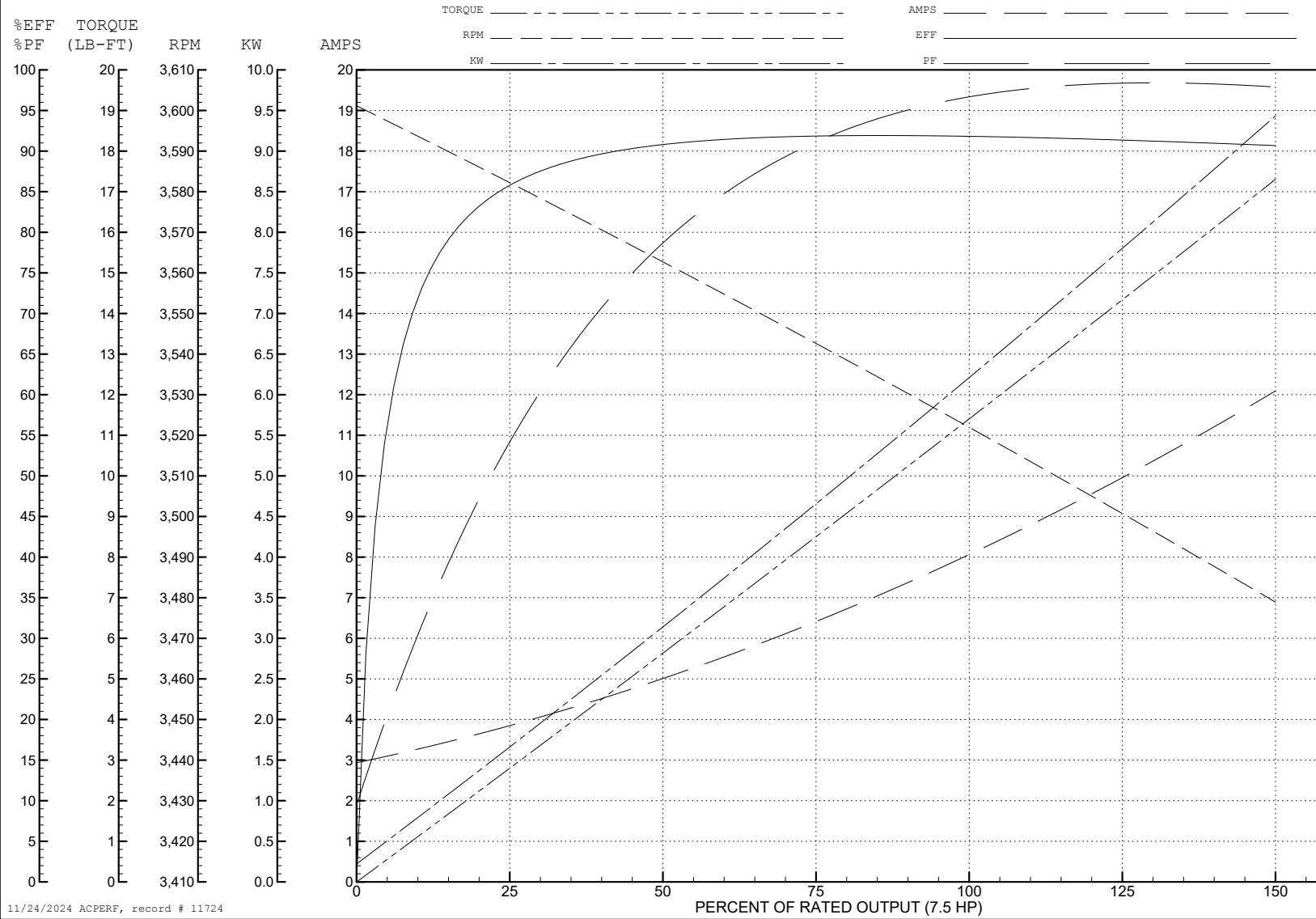
ABB Motors and Mechanical Inc.

WINDING # 37WGT384

Typical performance - not guaranteed values.

7.5 HP 3 PH 60 HZ 3500 RPM 460 V 3734M

TORQUES (LB-FT): PO=66.3 PU=25.8 LR=36.7 LRA=86.2



11/24/2024 ACPERF, record # 11724

AC Induction Motor Performance Data

Record # 35780

Typical performance - not guaranteed values

Winding: 37WGT384-R006		Type: 3734M		Enclosure: TEFC	
Nameplate Data			460 V, 60 Hz: High Voltage Connection		
Rated Output (HP)	7.5	Full Load Torque	11.5 LB-FT		
Volts	230/460	Start Configuration	direct on line		
Full Load Amps	16.6/8.3	Breakdown Torque	66.3 LB-FT		
R.P.M.	3500	Pull-up Torque	25.8 LB-FT		
Hz	60	Phase	3	Locked-rotor Torque	36.7 LB-FT
NEMA Design Code	A	KVA Code	K	Starting Current	86.2 A
Service Factor (S.F.)	1.15	No-load Current	3.25 A		
NEMA Nom. Eff.	91	Power Factor	93	Line-line Res. @ 25°C	0.913 Ω
Rating - Duty	40C AMB-CONT		Temp. Rise @ Rated Load	47°C	
S.F. Amps			Temp. Rise @ S.F. Load	56°C	
			Locked-rotor Power Factor	32.4	
			Rotor inertia	0.311 LB-FT ²	

Load Characteristics 460 V, 60 Hz, 7.5 HP

% of Rated Load	25	50	75	100	125	150	S.F.
Power Factor	62	85	89	94	95	100	95
Efficiency	84.7	90.9	92.1	92	91.4	90.7	91.6
Speed	3584	3564	3541	3520	3498	3481	3508
Line amperes	3.54	4.72	6.63	8.32	10.3	11.8	9.5

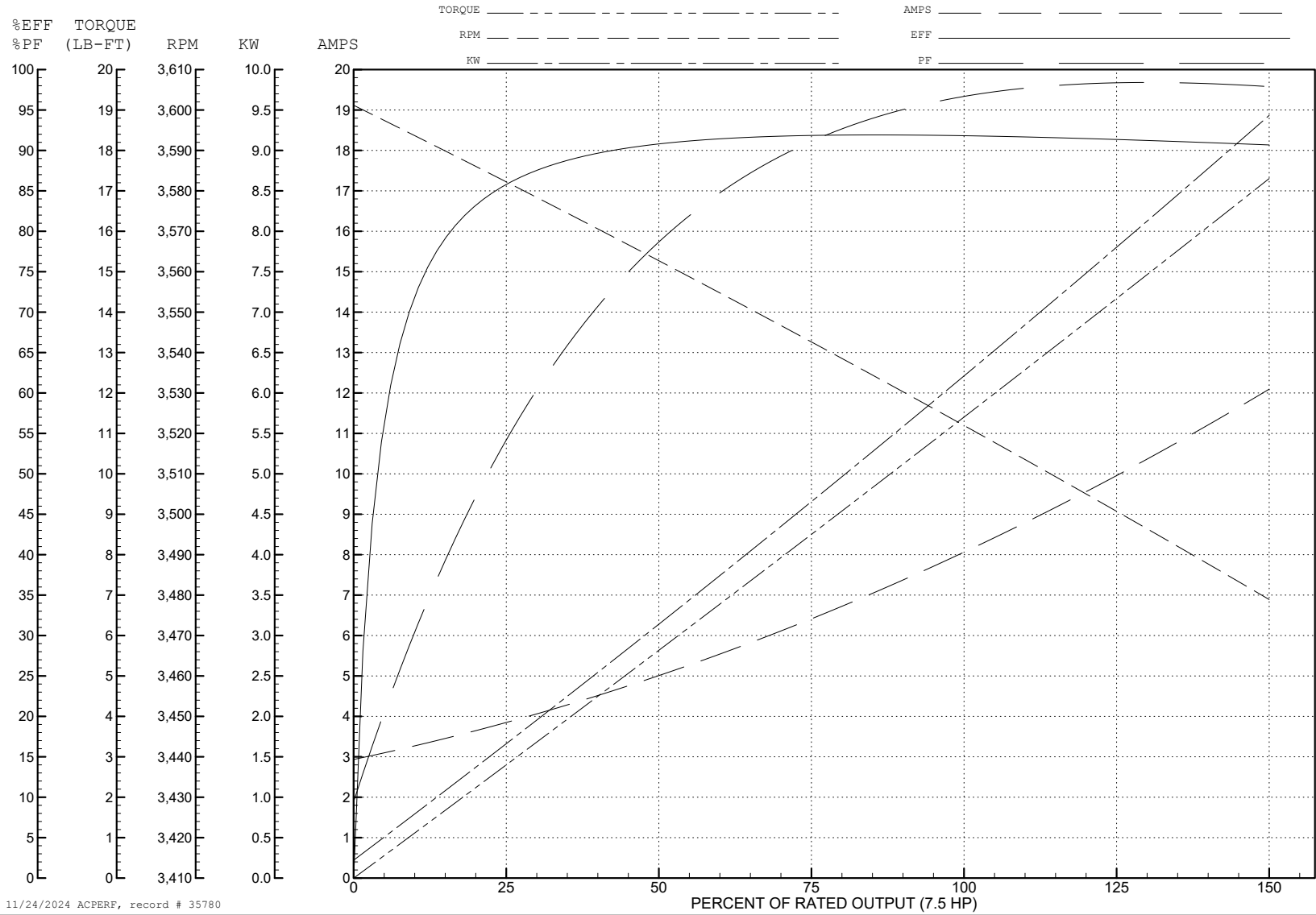
ABB Motors and Mechanical Inc.

WINDING # 37WGT384

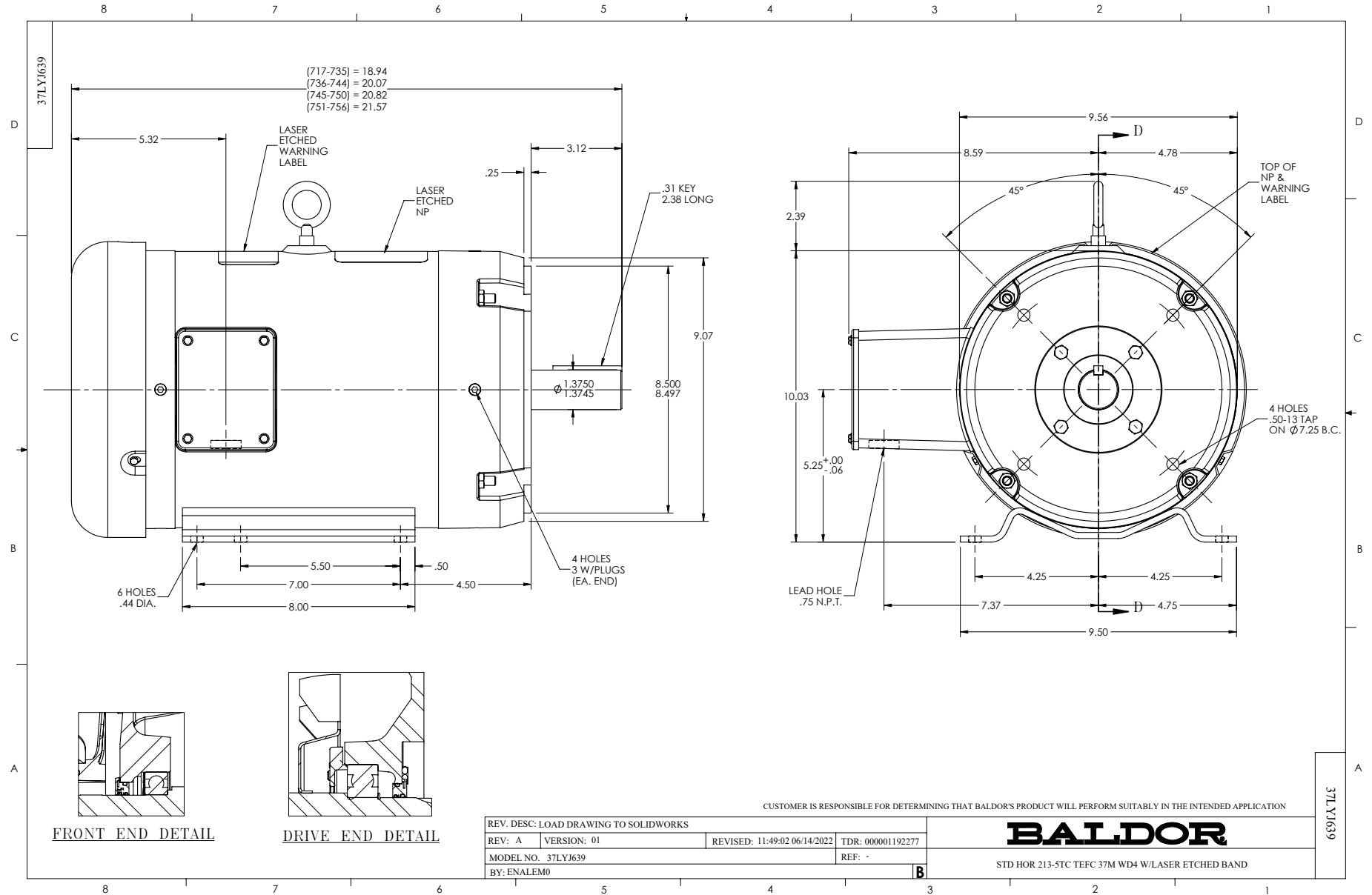
Typical performance - not guaranteed values.

7.5 HP 3 PH 60 HZ 3500 RPM 460 V 3734M

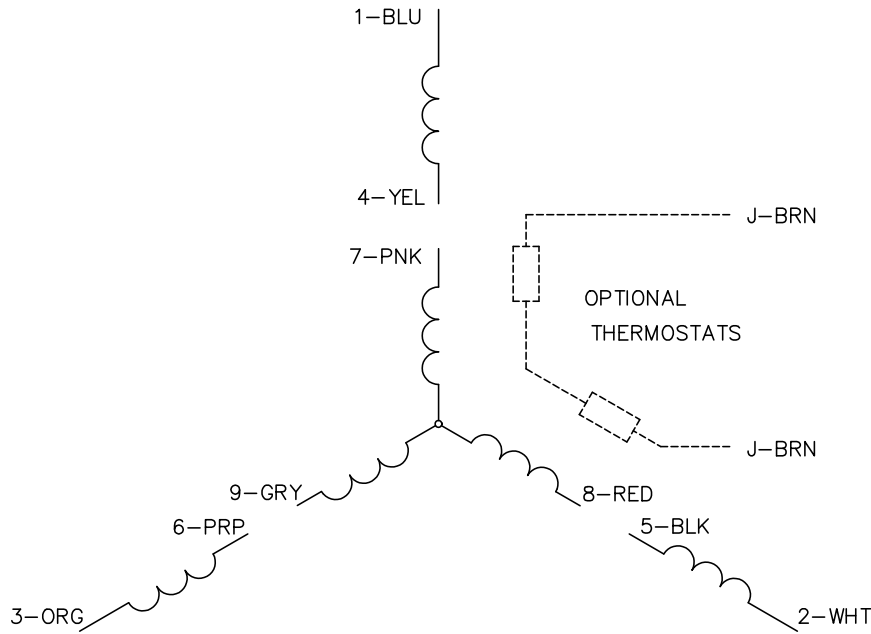
TORQUES (LB-FT): PO=66.3 PU=25.8 LR=36.7 LRA=86.2



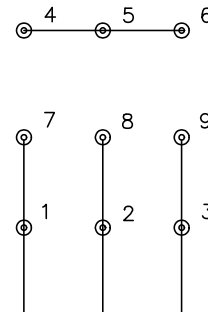
11/24/2024 ACPERP, record # 35780



CD0005

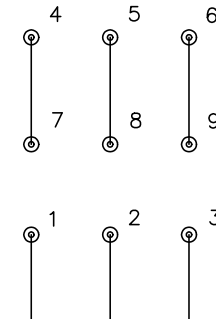


LOW VOLTAGE
(2Y)



LINE

HIGH VOLTAGE
(1Y)



LINE

NOTES:

1. INTERCHANGE ANY TWO LINE LEADS TO REVERSE ROTATION.
2. OPTIONAL THERMOSTATS ARE PROVIDED WHEN SPECIFIED.
3. ACTUAL NUMBER OF INTERNAL PARALLEL CIRCUITS MAY BE A MULTIPLE OF THOSE SHOWN ABOVE.
4. LEAD COLORS ARE OPTIONAL. LEADS MUST ALWAYS BE NUMBERED AS SHOWN.

CD0005

REV. DESC: REVISE TO SHOW OPTIONAL COLORS			
REV. LTR: E	BY: JLP	REVISED: 01/19/99 10:15	TDR: 0171435
S00000		FILE: AAA00005140	MDL: -
		MTL: -	

BALDOR ELECTRIC Co.

3PH, DV, 9 LEADS