

**BALDOR® • RELIANCE®**

---

# Customer information packet

## CESSWDM3714T-5

10HP, 1770RPM, 3PH, 60HZ, 215TC, 3754M, TEFC, F

Class -

Division - Not Applicable

## Specifications

Enclosure	TEFC
Frame	215TC
Frame Material	Stainless Steel
Frequency	60.00 Hz
Haz Area Division	Not Applicable
Motor Letter Type	Three Phase
Output @ Frequency	10.000 HP @ 60 HZ
Phase	3
Synchronous Speed @ Frequency	1800 RPM @ 60 HZ
Voltage @ Frequency	575.0 V @ 60 HZ
Ambient Temperature	40 °C
Auxillary Box	No Auxillary Box
Auxillary Box Lead Termination	None
Base Indicator	Rigid
Bearing Grease Type	Polyrex EM (-20F +300F)
Blower	None
Current @ Voltage	9.800 A @ 575.0 V
Design Code	B
Drip Cover	No Drip Cover
Duty Rating	CONT
Efficiency @ 100% Load	91.7 %
Electrically Isolated Bearing	Not Electrically Isolated
Feedback Device	NO FEEDBACK
Front Face Code	Standard
Front Shaft Indicator	None
Heater Indicator	No Heater
High Voltage Full Load Amps	9.8 a
Insulation Class	F
Inverter Code	Inverter Ready
KVA Code	H
Lifting Lugs	Standard Lifting Lugs
Locked Bearing Indicator	Locked Bearing

## Part detail

Revision	F
Type	AC
Mech. spec.	37J639
Base	
Status	PRD/A
Elec. spec.	37WGR528
Layout	37LYJ639
Eff. date	02-10-2023
CD Diagram	CD0006
Poles	04
Leads	3#14
Proprietary	False
Created date	11-21-2017

Motor Lead Exit	Ko Box
Motor Lead Quantity/Wire Size	3 @ 14 AWG
Motor Lead Termination	Flying Leads
Motor Standards	NEMA
Motor Type	3754M
Mounting Arrangement	F1
Number of Poles	4
Overall Length	21.66 IN
Power Factor	84
Product Family	Wash Down All Stainless Steel
Pulley End Bearing Type	Ball
Pulley Face Code	C-Face
Pulley Shaft Indicator	Standard
Rodent Screen	None
Service Factor	1.15
Shaft Diameter	1.375 IN
Shaft Extension Location	Pulley End
Shaft Ground Indicator	No Shaft Grounding
Shaft Rotation	Reversible
Shaft Slinger Indicator	No Slinger
Speed	1770 rpm
Speed Code	Single Speed
Starting Method	Direct on line
Thermal Device - Bearing	None
Thermal Device - Winding	None
Vibration Sensor Indicator	No Vibration Sensor
Winding Thermal 1	None
Winding Thermal 2	None

**Nameplate**

<b>NP1953C05</b>									
<b>CAT.NO.</b>	CESSWDM3714T-5								
<b>SPEC.</b>	37J639R528G1								
<b>HP</b>	10								
<b>VOLTS</b>	575								
<b>AMP</b>	9.8								
<b>RPM</b>	1770								
<b>FRAME</b>	215TC		<b>HZ</b>	60		<b>PH</b>	3		
<b>SER.F.</b>	1.15	<b>CODE</b>	H	<b>DES</b>	B	<b>CLASS</b>	F		
<b>NEMA-NOM-EFF</b>	91.7	<b>PF</b>	84						
<b>RATING</b>	40C AMB-CONT								
<b>CC</b>	010A	<b>USABLE AT 208V</b>	N/A						
<b>DE</b>	6307	<b>ODE</b>	6206						
<b>ENCL</b>	TEFC	<b>SN</b>							
	4:1CT 20:1VT								

## Parts list

Part number	Description	Quantity
SA353161	SA 37J639R528G1	1.000 ea
RA341962	RA 37J639R528G1	1.000 ea
37FN3002C01	EXFN, PLASTIC, 6.00 OD, 1.155 ID	1.000 ea
HW3200S01	EYEBOLT 3/8-16 X3/4 S.S. TDR #35988	1.000 ea
37CB1004A01	CONDUIT BOX, MACH	1.000 ea
37GS3011	1/8"WHITE NEOPRENE BOX GS	1.000 ea
51XW2520A12	.25-20 X .75, TAPTITE II, HEX WSHR SLTD	2.000 ea
HA5027A02	HA4054 T-DRAIN X2 BAGGED WITH LABEL	1.000 ea
11XW1032G06	10-32 X .38, TAPTITE II, HEX WSHR SLTD U	1.000 ea
HW3001B02	BRASS CUP WASHER W/GROUND SYMBOL TAB,	1.000 ea
37EP1907A01	FRONT TEFC 206 BRG NO GR SR S/P 9-2 (STAI	1.000 ea
HW4500S33	1/8 NPT STAINLESS #304 SS PLUG	3.000 ea
HW4606A03	JM CLIPPER/SEAL (LWE-1156-1875-AL44)	1.000 ea
HW5100A06	W2420-025 WVY WSHR (WB)	1.000 ea
37EP1908A02	PU EP FOR LOCKED 307 BRG	1.000 ea
HW4500S33	1/8 NPT STAINLESS #304 SS PLUG	3.000 ea
HW4606A04	JM CLIPPER/SEAL (LWE-1376-2125-AL45)	1.000 ea
10XN2520S32	1/4-20 X 2 HEX HEAD SS	4.000 ea
XY3118S12	5/16-18 HEX NUT, STAINLESS STEEL	4.000 ea
37FH4000A45	STAINLESS FAN COVER, NO GREASER SLOT (FO	1.000 ea
10XN1032S06	HEX HD CAP SCREW, SS	3.000 ea
36CB4517	LIPPED CB LID #304 STAINLESS - CLEANED	1.000 ea
37GS3010SP	1/16"WHITE LID GASKET	1.000 ea
59XN0832S07	8/32 X 7/16 HX WS HD SER X	4.000 ea
HW2502F21	#303 SS,SQ KEY 5/16 X 2.375	1.000 ea
HA7000A02	KEY RETAINER RING, 1 1/8 DIA, 1 3/8 DIA	1.000 ea
MJ5001A02	732 CL SEALANT 3 OZ DIXIE BEARING 289100	0.001 ea
MJ1000A02	GREASE, POLYREX EM EXXON	0.050 lb
51XB1214A20	12-14X1.25 HXWSSLD SERTYB	1.000 ea
HA3104S37	THRUBOLT- .31-18 X 15.312 SS	4.000 ea
37PA1074	PALLET PACK GRP, PRINT BOX PK1026A06	1.000 ea

MN416A01	TAG-INSTAL-MAINT no wire (2500bx)4/22	1.000 ea
FE-0000007	ZRTG FE ASSEMBLY	1.000 ea
PE-0000012	ZRTG PE ASSEMBLY	1.000 ea

**AC Induction Motor Performance Data**

Record # 42939

Typical performance - not guaranteed values

<b>Winding:</b> 37WGR528-R001		<b>Type:</b> 3754M		<b>Enclosure:</b> TEFC	
<b>Nameplate Data</b>			<b>575 V, 60 Hz: Single Voltage Motor</b>		
<b>Rated Output (HP)</b>	10	<b>Full Load Torque</b>	30 LB-FT		
<b>Volts</b>	575	<b>Start Configuration</b>	direct on line		
<b>Full Load Amps</b>	9.8	<b>Breakdown Torque</b>	76.7 LB-FT		
<b>R.P.M.</b>	1770	<b>Pull-up Torque</b>	45.1 LB-FT		
<b>Hz</b>	60	<b>Locked-rotor Torque</b>	51.4 LB-FT		
<b>NEMA Design Code</b>	B	<b>Starting Current</b>	66.9 A		
<b>Service Factor (S.F.)</b>	1.15	<b>No-load Current</b>	3.57 A		
<b>NEMA Nom. Eff.</b>	91.7	<b>Line-line Res. @ 25°C</b>	1.56 Ω		
<b>Rating - Duty</b>	40C	<b>Temp. Rise @ Rated Load</b>	68°C		
<b>S.F. Amps</b>	AMB-CONT	<b>Temp. Rise @ S.F. Load</b>	84°C		

**Load Characteristics 575 V, 60 Hz, 10 HP**

<b>% of Rated Load</b>	<b>25</b>	<b>50</b>	<b>75</b>	<b>100</b>	<b>125</b>	<b>150</b>	<b>S.F.</b>
<b>Power Factor</b>	49	72	80	84	85	86	85
<b>Efficiency</b>	88.9	91.9	92.4	92.1	90.9	89.8	91.4
<b>Speed</b>	1791	1783	1775	1764	1755	1743	1759
<b>Line amperes</b>	4.2	5.62	7.58	9.78	12.1	14.6	11.2

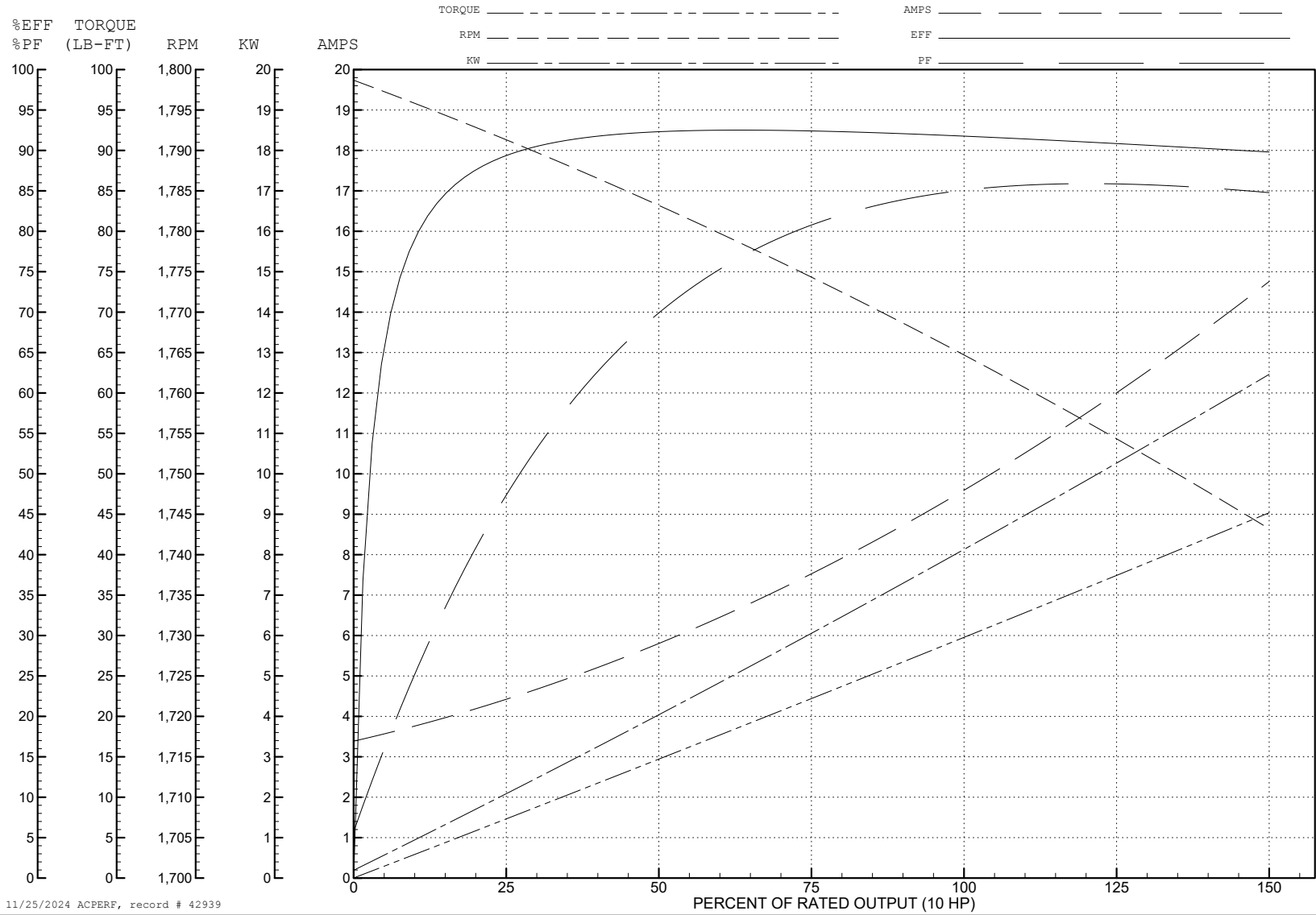
ABB Motors and Mechanical Inc.

WINDING # 37WGR528

Typical performance - not guaranteed values.

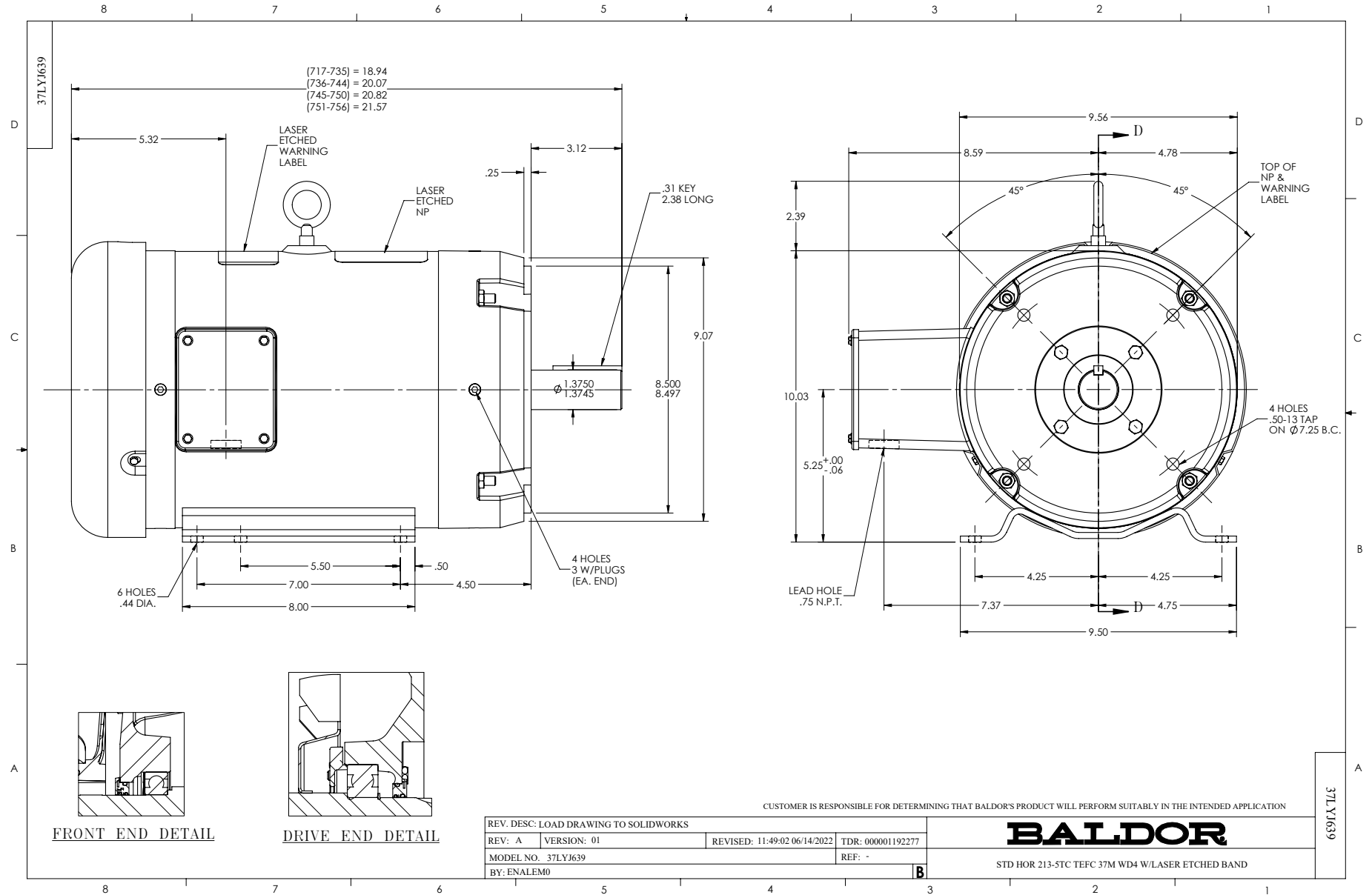
10 HP 3 PH 60 HZ 1770 RPM 575 V 3754M

TORQUES (LB-FT): PO=76.7 PU=45.1 LR=51.4 LRA=66.9

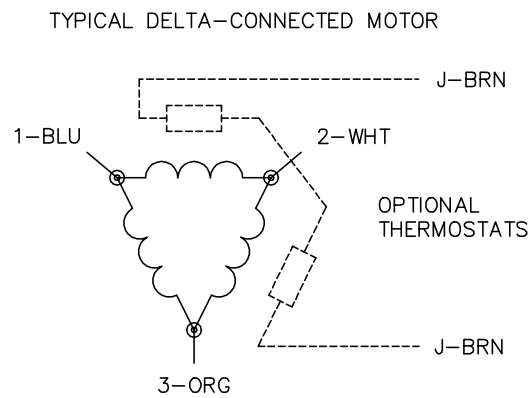
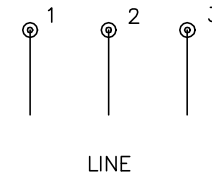
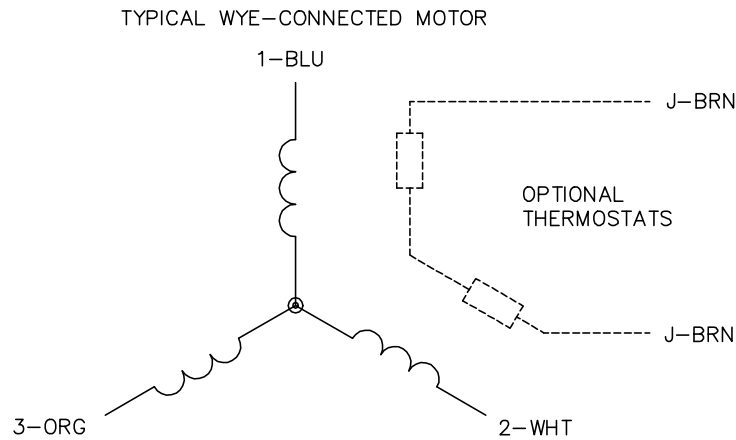


11/25/2024 ACPERF, record # 42939





CD0006



NOTES:

1. THREE LEAD MOTOR MAY BE EITHER WYE CONNECTED OR DELTA CONNECTED.
2. INTERCHANGE ANY TWO LINE LEADS TO REVERSE ROTATION.
3. OPTIONAL THERMOSTATS ARE PROVIDED WHEN SPECIFIED.
4. ACTUAL NUMBER OF INTERNAL PARALLEL CIRCUITS MAY VARY.
5. LEAD COLORS ARE OPTIONAL. LEADS MUST BE NUMBERED AS SHOWN.

CD0006

REV. DESC: ADD CLASS CONN00000007		
REV. LTR: E	VERSION: 01	TDR: 000001099922
FILE: \AAA\00005\141	REVISED: 10:24:49 02/19/2019	BY: ENBRIRO
MTL: -		© □

**BALDOR - RELIANCE®**

3PH, SV, 3 LEADS, WYE OR DELTA CONNECTED

SH 1 of 1