

BALDOR • RELIANCE

Customer information packet

CEWDM3556T

1//.75HP, 1155//970RPM, 3PH, 60//50HZ, 145TC

Class - None

Division - Not Applicable

Specifications

Enclosure	TEFC
Frame	145TC
Frame Material	Steel
Frequency	50.00 Hz 60.00 Hz
Haz Area Class and Group	None
Haz Area Division	Not Applicable
Motor Letter Type	Three Phase
Output @ Frequency	.750 HP @ 50 HZ 1.000 HP @ 60 HZ
Phase	3
Synchronous Speed @ Frequency	1200 RPM @ 60 HZ
Voltage @ Frequency	380.0 V @ 50 HZ 230.0 V @ 60 HZ 190.0 V @ 50 HZ 460.0 V @ 60 HZ
Agency Approvals	CSA EEV NEMA PREMIUM UR
Ambient Temperature	40 °C
Auxillary Box	No Auxillary Box
Auxillary Box Lead Termination	None
Base Indicator	Rigid
Bearing Grease Type	Polyrex EM (-20F +300F)
Blower	None
Current @ Voltage	3.500 A @ 208.0 V 3.200 A @ 190.0 V 3.000 A @ 230.0 V 1.600 A @ 380.0 V 1.500 A @ 460.0 V
Design Code	B
Drip Cover	No Drip Cover

Part detail

Revision	D
Type	AC
Mech. spec.	35S595
Base	
Status	PRD/A
Elec. spec.	35WGG019
Layout	35LYS595
Eff. date	07-31-2024
CD Diagram	CD0005
Poles	06
Leads	9#18
Proprietary	False
Created date	02-23-2023

Duty Rating	CONT
Efficiency @ 100% Load	82.5 %
Electrically Isolated Bearing	Not Electrically Isolated
Feedback Device	NO FEEDBACK
Front Shaft Indicator	None
Heater Indicator	No Heater
High Voltage Full Load Amps	1.5 a
Insulation Class	F
Inverter Code	Inverter Ready
KVA Code	J
Lifting Lugs	No Lifting Lugs
Locked Bearing Indicator	Locked Bearing
Motor Lead Quantity/Wire Size	9 @ 18 AWG
Motor Lead Termination	Flying Leads
Motor Standards	NEMA
Motor Type	3526M
Mounting Arrangement	F1
Number of Poles	6
Overall Length	13.28 IN
Power Factor	67
Product Family	Wash Down
Pulley End Bearing Type	Sealed Bearing
Pulley Face Code	C-Face
Pulley Shaft Indicator	Standard
Rodent Screen	None
Service Factor	1.15
Shaft Diameter	0.875 IN
Shaft Ground Indicator	No Shaft Grounding
Shaft Rotation	Reversible
Speed	1155 rpm 970 rpm
Speed Code	Single Speed
Starting Method	Direct on line
Thermal Device - Bearing	None

Thermal Device - Winding	None
Vibration Sensor Indicator	No Vibration Sensor
Winding Thermal 1	None
Winding Thermal 2	None

Nameplate

NP1669L									
CAT.NO.	CEWDM3556T								
SPEC.	35S595G019								
HP	1//.75								
VOLTS	230/460//190/380								
AMP	3/1.5//3.2/1.6								
RPM	1155//970								
FRAME	145TC	HZ	60//50	PH	3				
SER.F.	1.15	CODE	J	DES	B	CLASS	F		
NEMA-NOM-EFF	82.5	PF	67						
RATING	40C AMB-CONT								
CC									
DE	6205	ODE							
ENCL	TEFC	SN							
BLANK	SFA 3.7/1.85//3.5/1.75								

Parts list

Part number	Description	Quantity
SA415012	SA 35S595G019	1.000 ea
RA406781	RA 35S595G019	1.000 ea
34FN3002B01	EXTERNAL FAN, PLASTIC, .637/.639 HUB W/	1.000 ea
NS2512A01	INSULATOR, CONDUIT BOX X	1.000 ea
35CB3008A01G	SPL CONDUIT BOX, MACHINED GRAY	1.000 ea
35GS1039	05 MOLDED GASKET W/LIP, 1.12 LEAD HOLE,	1.000 ea
51XB1016A08	10-16X 1/2HXWSSLD SERTYB	2.000 ea
11XW1032G06	10-32 X .38, TAPTITE II, HEX WSHR SLTD U	1.000 ea
35EP3122B00W	MASTER ODE,203 BRG,.683SH,.125NPT DRNS,F	1.000 ea
HW4072A01	BLACK DRAIN PLUG FOR .125 NPT	3.000 ea
HW5100A03	WAVY WASHER (W1543-017)	1.000 ea
35EP3307E00W	MASTER DE,205 BRG,1.623SH,.125NPT DRNS,C	1.000 ea
HW4072A01	BLACK DRAIN PLUG FOR .125 NPT	3.000 ea
HW4600B49	SEAL 0.938 X 1.624 X 0.250 SINGLE LIP DB	1.000 ea
12XN1032S20	10-32 X 1-1/4 HEX M.S. , STAINLESS STEEL	2.000 ea
51XB1214A16	12-14X1.00 HXWSSLD SERTYB	1.000 ea
35FH4005A32SP	IEC FH NO GRSR W/3 HOLES - PRIMED	1.000 ea
11XW1032S06	10-32 X .38, TAPTITE II, HEX WSHR SLTD U	3.000 ea
35CB4522	35 LIPPED CB LID PRIMED	1.000 ea
35GS1030A02	35 GS FOR CB LID - WHITE NEOPRENE	1.000 ea
59XW0832S07	TAPTITE II,HEX WSHR UNSLTD SER,410 S.S.,	4.000 ea
HA1005A05SP	SLINGER, OD 1.50, ID .659, 203 BRG	1.000 ea
HW4600B46	V-RING SLINGER 0.875 X 1.420 X .24 VITON	1.000 ea
HW2502D13	SS KEY, 3/16 SQ X 1.375	1.000 ea
HA7000A01	KEY RETAINER 7/8" DIA SHAFT	1.000 ea
MJ5001A27	32220KN GRAY SEALER *MIN BUY 4 QTS=1GAL	0.001 qt
LB1164	LABEL,WARNING AND DRAIN	1.000 ea
85XU0407S04	4X1/4 U DRIVE PIN STAINLESS	2.000 ea
HA5027A02	HA4054 T-DRAIN X2 BAGGED WITH LABEL	1.000 ea
LB1164	LABEL,WARNING AND DRAIN	1.000 ea
LC0005	CONN.DIA.,TY M,9-LD,DUAL VOLT,REVERSING	1.000 ea

NP1669L	SS WD SUPER-E UL PREM REV MTG	1.000 ea
MN416A01	TAG-INSTAL-MAINT no wire (2500bx)4/22	1.000 ea
MJ1000A02	GREASE, POLYREX EM EXXON	0.050 lb
HA3100S07	THRUBOLT 10-32 X 8.375 SS	4.000 ea
MG1025W01	WILKOFAS, 781.01, SIGNAL WHITE #9003	0.022 ga
36PA1000	PKG GRP, PRINT PK1016A06	1.000 ea
MG1025Z02	ACTIVATOR WILKOFAS 060.02HF	0.022 ga
FE-0000001	ZRTG FE ASSEMBLY	1.000 ea
PE-0000002	ZRTG PE ASSEMBLY	1.000 ea

AC Induction Motor Performance Data

Record # 54266

Typical performance - not guaranteed values

Winding: 35WGM497-R012		Type: 3526M		Enclosure: TEFC		
Nameplate Data			460 V, 60 Hz: High Voltage Connection			
Rated Output (HP)	1	Full Load Torque	4.51 LB-FT			
Volts	230/460	Start Configuration	direct on line			
Full Load Amps	3.6/1.8	Breakdown Torque	15.3 LB-FT			
R.P.M.	1155	Pull-up Torque	11.1 LB-FT			
Hz	60 Phase	3	Locked-rotor Torque	11.9 LB-FT		
NEMA Design Code	B KVA Code	K	Starting Current	10.8 A		
Service Factor (S.F.)	1.15	No-load Current	1.21 A			
NEMA Nom. Eff.	82.5 Power Factor	64	Line-line Res. @ 25°C	16.1 Ω		
Rating - Duty	40C AMB-CONT		Temp. Rise @ Rated Load	47°C		
S.F. Amps			Temp. Rise @ S.F. Load	56°C		
			Locked-rotor Power Factor	41.5		
			Rotor inertia	0.155 lb-ft ²		

Load Characteristics 460 V, 60 Hz, 1 HP

% of Rated Load	25	50	75	100	125	150	S.F.
Power Factor	27	43	55	64	70	75	68
Efficiency	69.2	79.4	82.1	82.7	82	80.4	82.4
Speed	1190	1181	1170	1159	1146	1130	1151
Line amperes	1.25	1.36	1.53	1.75	2.02	2.33	1.91

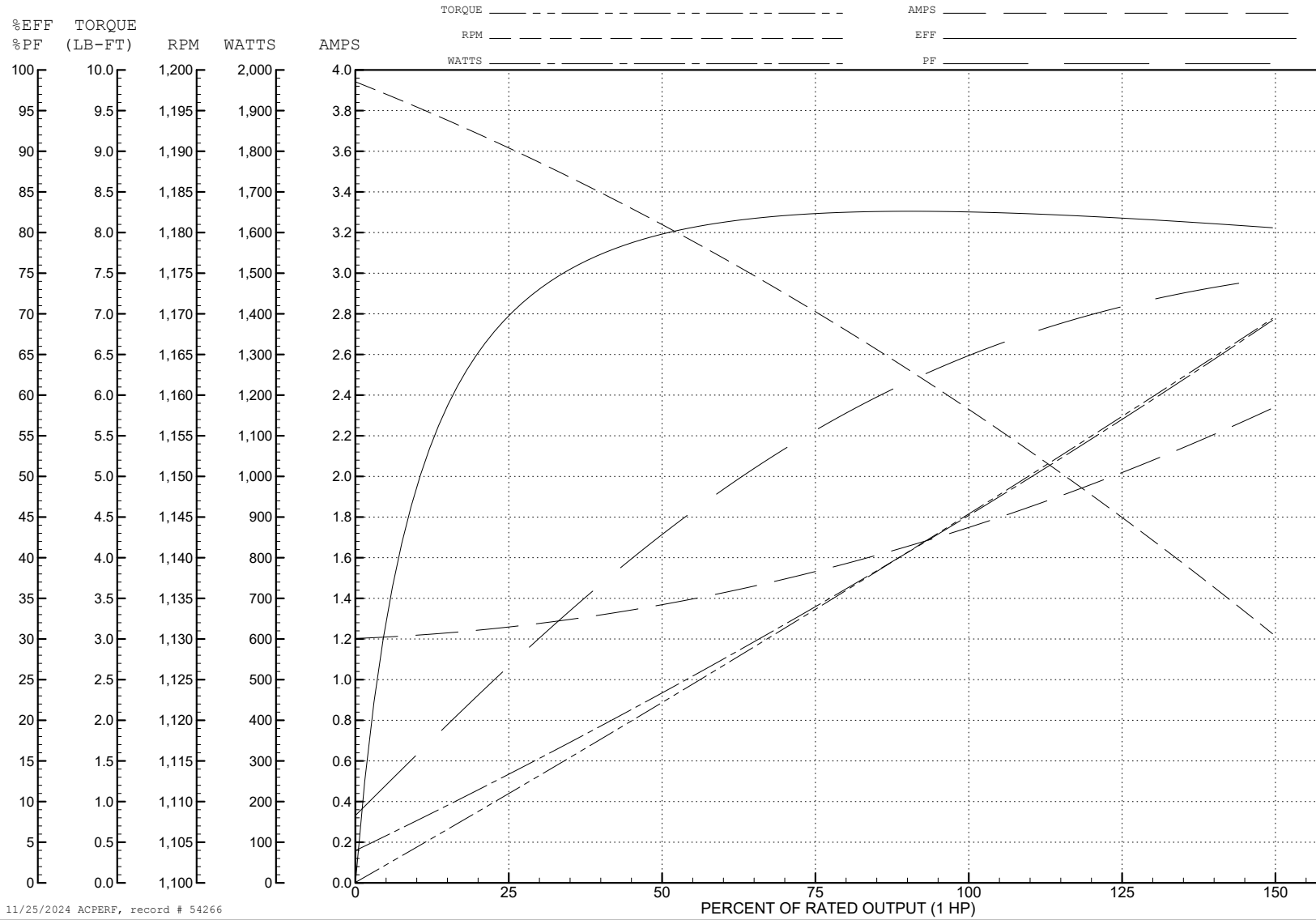
ABB Motors and Mechanical Inc.

WINDING # 35WGM497

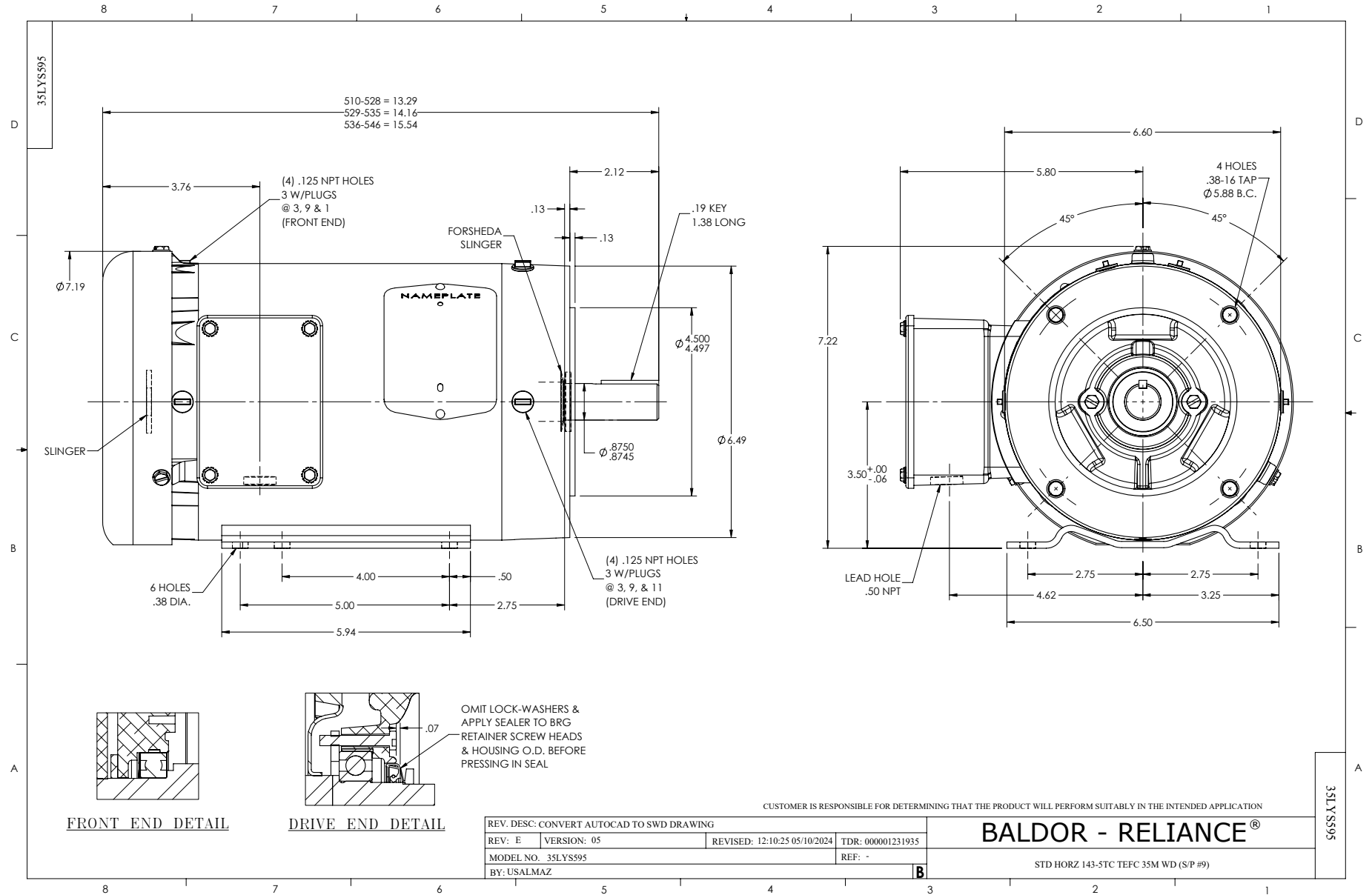
1 HP 3 PH 60 HZ 1155 RPM 460 V 3526M

Typical performance - not guaranteed values.

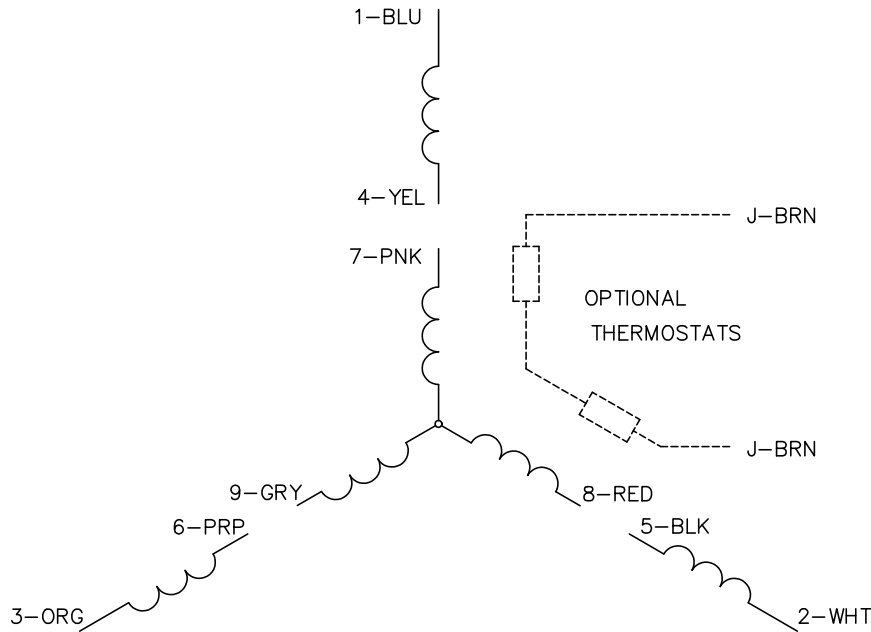
TORQUES (LB-FT): PO=15.3 PU=11.1 LR=11.9 LRA=10.8



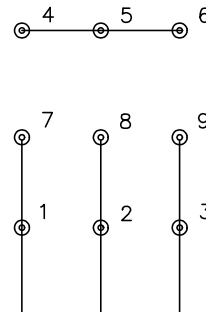
11/25/2024 ACPERF, record # 54266



CD0005

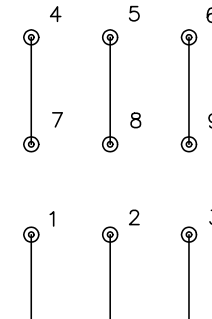


LOW VOLTAGE
(2Y)



LINE

HIGH VOLTAGE
(1Y)



LINE

NOTES:

1. INTERCHANGE ANY TWO LINE LEADS TO REVERSE ROTATION.
2. OPTIONAL THERMOSTATS ARE PROVIDED WHEN SPECIFIED.
3. ACTUAL NUMBER OF INTERNAL PARALLEL CIRCUITS MAY BE A MULTIPLE OF THOSE SHOWN ABOVE.
4. LEAD COLORS ARE OPTIONAL. LEADS MUST ALWAYS BE NUMBERED AS SHOWN.

CD0005

REV. DESC: REVISE TO SHOW OPTIONAL COLORS			
REV. LTR: E	BY: JLP	REVISED: 01/19/99 10:15	TDR: 0171435
S00000		FILE: AAA00005140	MDL: -
		MTL: -	

BALDOR ELECTRIC Co.

3PH, DV, 9 LEADS