

BALDOR • RELIANCE

Customer information packet

CFM3046A

.75HP, 1140RPM, 3PH, 60HZ, 48YZ, 3428M, OPEN

Class - None

Division - Not Applicable

Specifications

Enclosure	OPEN
Frame	48YZ
Frame Material	Steel
Frequency	60.00 Hz
Haz Area Class and Group	None
Haz Area Division	Not Applicable
Motor Letter Type	Three Phase
Output @ Frequency	.750 HP @ 60 HZ
Phase	3
Synchronous Speed @ Frequency	1200 RPM @ 60 HZ
Voltage @ Frequency	208.0 V @ 60 HZ 230.0 V @ 60 HZ 460.0 V @ 60 HZ
Agency Approvals	UR CSA
Ambient Temperature	40 °C
Auxillary Box	No Auxillary Box
Auxillary Box Lead Termination	None
Base Indicator	Rigid
Bearing Grease Type	Polyrex EM (-20F +300F)
Blower	None
Current @ Voltage	1.500 A @ 460.0 V 3.000 A @ 230.0 V 3.300 A @ 208.0 V 3.600 A @ 208.0 V
Design Code	B
Drip Cover	No Drip Cover
Duty Rating	CONT
Efficiency @ 100% Load	77.0 %
Electrically Isolated Bearing	Not Electrically Isolated
Feedback Device	NO FEEDBACK
Front Face Code	Standard

Part detail

Revision	V
Type	AC
Mech. spec.	34J280
Base	
Status	PRD/A
Elec. spec.	34WGX426
Layout	34LYJ280
Eff. date	01-13-2025
CD Diagram	CD0007
Poles	06
Leads	12#18
Proprietary	False
Created date	01-01-0001

Front Shaft Indicator	None
Heater Indicator	No Heater
High Voltage Full Load Amps	1.5 a
Insulation Class	F
Inverter Code	Not Inverter
KVA Code	K
Lifting Lugs	No Lifting Lugs
Locked Bearing Indicator	No Locked Bearing
Motor Lead Exit	Terminal Panel Or Lead Hole
Motor Lead Quantity/Wire Size	12 @ 18 AWG
Motor Lead Termination	Flying Leads
Motor Standards	NEMA
Motor Type	3428M
Mounting Arrangement	F3
Number of Poles	6
Overall Length	16.02 IN
Power Factor	59
Product Family	General Purpose
Pulley End Bearing Type	Ball
Pulley Face Code	Resilient Mount
Pulley Shaft Indicator	Key And Flat
Rodent Screen	None
Service Factor	1.00
Shaft Diameter	0.625 IN
Shaft Extension Location	Pulley End
Shaft Ground Indicator	No Shaft Grounding
Shaft Rotation	Reversible
Shaft Slinger Indicator	No Slinger
Speed	1140 rpm
Speed Code	Single Speed
Starting Method	Direct on line
Thermal Device - Bearing	None
Thermal Device - Winding	None
Vibration Sensor Indicator	No Vibration Sensor

Winding Thermal 1	Automatic Thermal Overload
Winding Thermal 1 Location	SB
Winding Thermal 2	None

Nameplate

NP1257L									
CAT.NO.	CFM3046A								
SPEC.	34J280X426G1								
HP	.75								
VOLTS	208-230/460								
AMP	3.3-3/1.5								
RPM	1140								
FRAME	48YZ		HZ	60		PH	3		
SER.F.	1.00	CODE	K	DES	B	CL	F		
NEMA-NOM-EFF	77	PF	59						
RATING	60C AMB-CONT								
CC									
DE	6203	ODE	6203						
ENCL	OPEN	SN							

Parts list

Part number	Description	Quantity
SA080922	SA 34J280X426G1	1.000 ea
RA074308	RA 34J280X426G1	1.000 ea
TPMYJ64KX	THERMAL 3PH 0.75 AUT 120C	1.000 ea
SP1000A09	TERM BOARD, MODEL 34 SW, (RPL SP1000A01)	1.000 ea
34EP3200A01SP	FR ENDPLATE, MACH	1.000 ea
MJ5004A05	#242-21 LOCTITE GENERAL PURPOSE MED. STR	0.010 ea
HW5100A03	WAVY WASHER (W1543-017)	1.000 ea
34EP3204B18	FR/PU ENDPLATE, MACH 17 FRAME W/.5 NPT L	1.000 ea
HA6001A01	THERMAL RETAINER (PLATED)	1.000 ea
NS2500A01	INSULATOR, AUTO THER PROT	1.000 ea
51XB1214A10	12-14 X 5/8HX WS SL SR TYBX	2.000 ea
XY1032A02	10-32 HEX NUT DIRECTIONAL SERRATION	4.000 ea
HW2501D41	KEY, 3/16 SQ. X 4.875 TDR#90959 AUTO	1.000 ea
HA7000A04	KEY RETAINER 0.625 DIA SHAFTS	1.000 ea
34CB4501SP	TERMINAL BOX LID, STAMPED X (PLATED)	1.000 ea
34GS1018	GASKET, TERM PLATE LID BLACK NEOPRENE	1.000 ea
51XW0832A07	8-32 X .44, TAPTITE II, HEX WSHR SLTD SE	2.000 ea
51XW0832A07	8-32 X .44, TAPTITE II, HEX WSHR SLTD SE	1.000 ea
51XW0832A07	8-32 X .44, TAPTITE II, HEX WSHR SLTD SE	2.000 ea
RM1001A01	GROMMET "MIDSTATES"	1.000 ea
HA1041A01	CUPPED SLINGER KENCO	1.000 ea
10XN2520A06	1/4 20X3/8 HX HD CAP	3.000 ea
MG1050G01	CELEROL MEDIUM CHARCOAL METALLIC GRAY	0.014 ga
85XU0407S04	4X1/4 U DRIVE PIN STAINLESS	2.000 ea
HA3100A18	THRUBOLT 10-32 X 9.250	4.000 ea
MN416A01	TAG-INSTAL-MAINT no wire (2500bx)4/22	1.000 ea
LB1118	LABEL,WARNING (ROLL LABEL)	1.000 ea
LC0007	CONNECTION LABEL	1.000 ea
NP1257L	ALUM UL CC THERMAL REV MTG	1.000 ea
35PA1007	PKG GRP, PRINT PK1034A06	1.000 ea
PK3083	STYROFOAM PACKING CRADLE	1.000 ea

PK3085X	FOAM SHAFT SUPPORT PRECUT 4-1/4 X 6-3/4	1.000 ea
PK3088	MICROFOAM, 8"X"8 PERF. SHEETS	1.000 ea

AC Induction Motor Performance Data

Record # 50779

Typical performance - not guaranteed values

Winding: 34WGX426-R003		Type: 3428M		Enclosure: OPEN	
Nameplate Data			460 V, 60 Hz: High Voltage Connection		
Rated Output (HP)	.75		Full Load Torque	3.4 LB-FT	
Volts	208-230/460		Start Configuration	direct on line	
Full Load Amps	3.3-3/1.5		Breakdown Torque	11.8 LB-FT	
R.P.M.	1140		Pull-up Torque	9.3 LB-FT	
Hz	60 Phase	3	Locked-rotor Torque	9.7 LB-FT	
NEMA Design Code	B KVA Code	K	Starting Current	7.4 A	
Service Factor (S.F.)	1		No-load Current	1.1 A	
NEMA Nom. Eff.	77 Power Factor	59	Line-line Res. @ 25°C	21.9 Ω	
Rating - Duty	40C AMB-CONT		Temp. Rise @ Rated Load		

Load Characteristics 460 V, 60 Hz, 0.75 HP

% of Rated Load	25	50	75	100	125	150
Power Factor	26	40	51	59	65	68
Efficiency	60	72	76	77	75	73
Speed	1185	1170	1155	1135	1115	1095
Line amperes	1.1	1.2	1.4	1.5	1.7	2

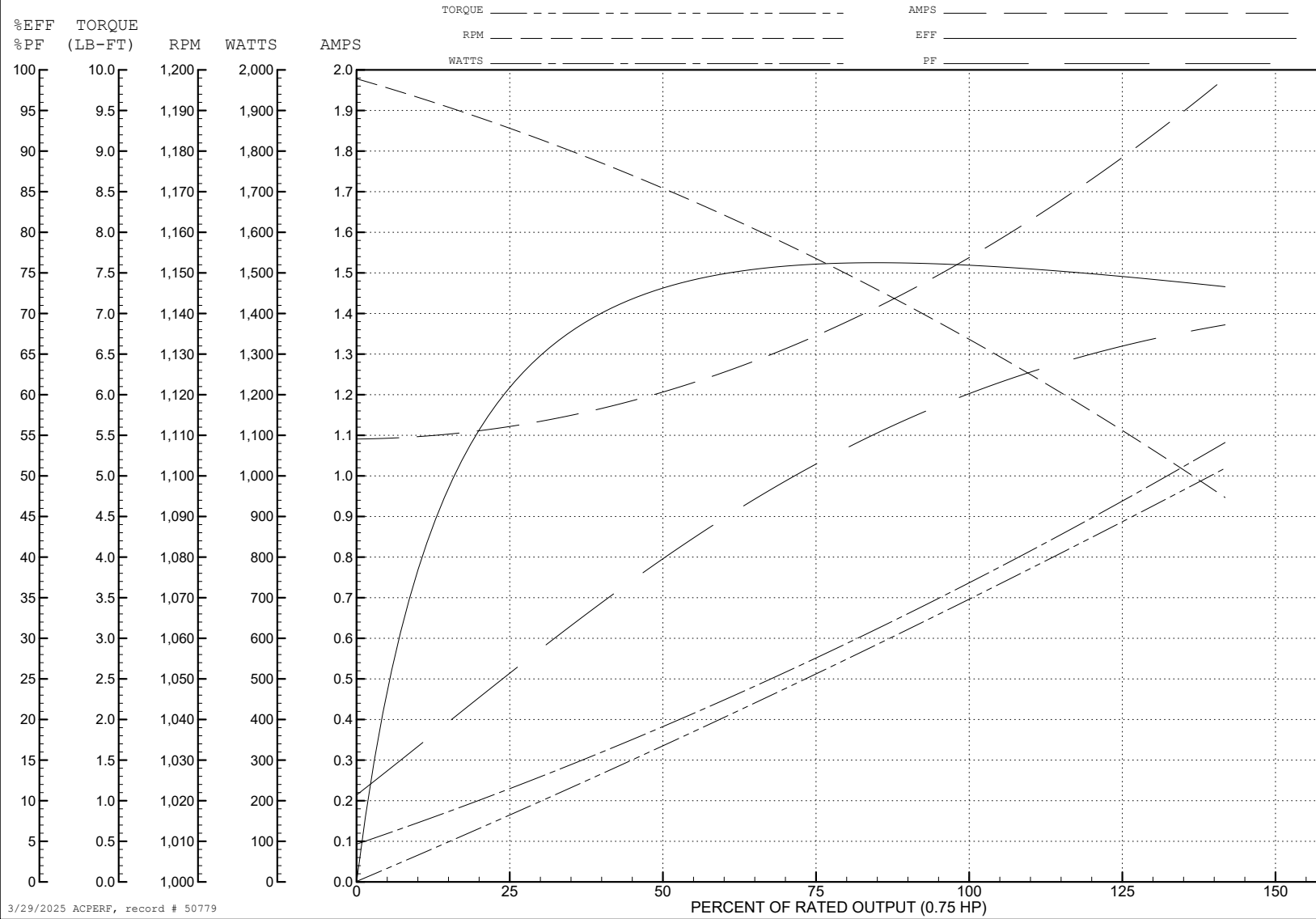
ABB Motors and Mechanical Inc.

WINDING # 34WGx426

0.75 HP 3 PH 60 HZ 1140 RPM 460 V 3428M

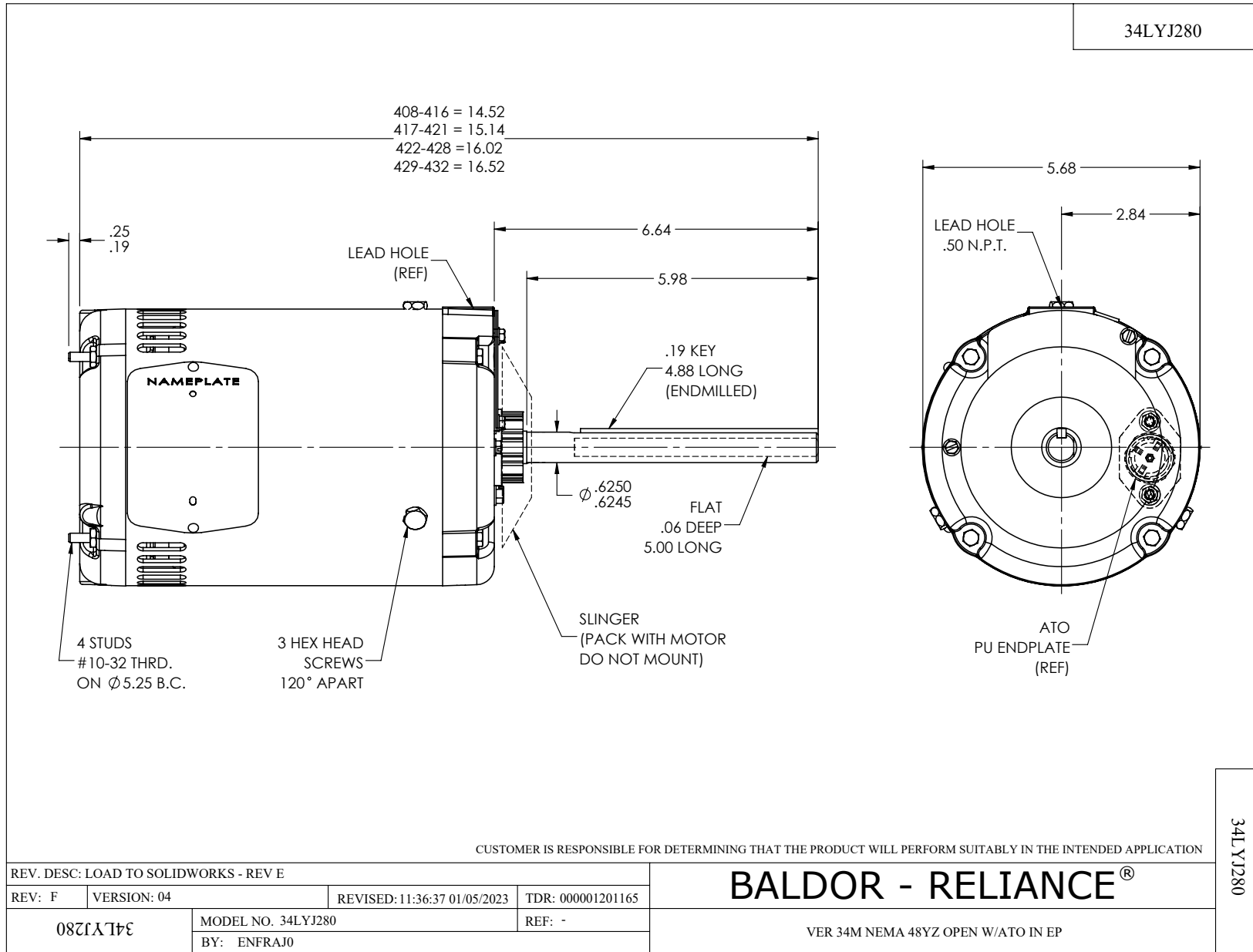
Typical performance - not guaranteed values.

TORQUES (LB-FT): PO=11.8 PU=9.3 LR=9.7 LRA=7.4

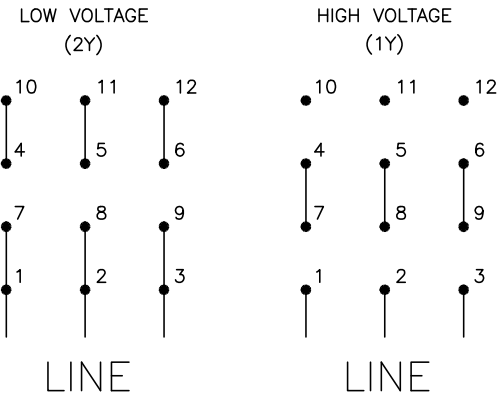
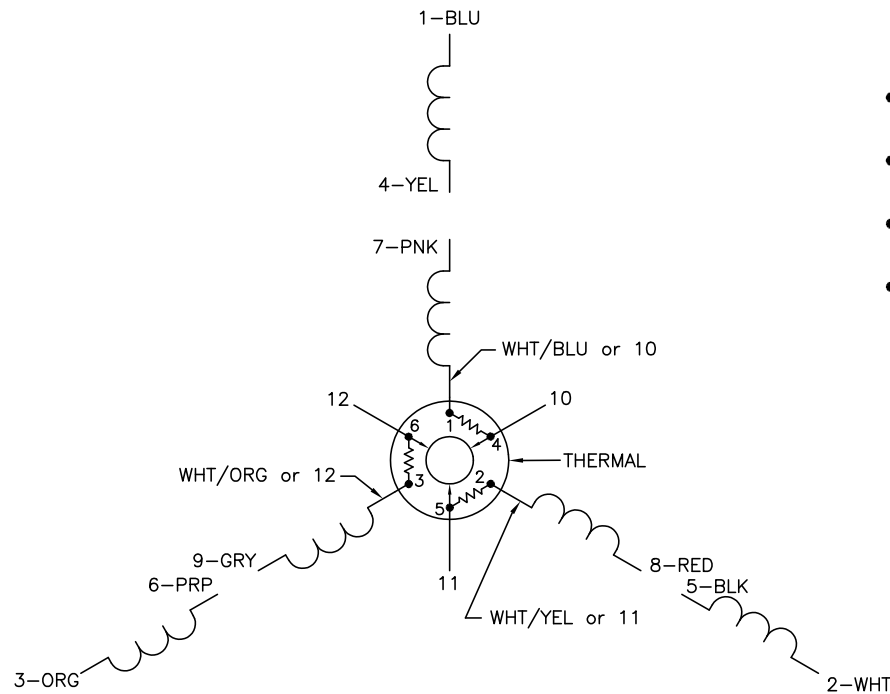


3/29/2025 ACPERF, record # 50779

34LYJ280



CD0007



NOTES:

1. INTERCHANGE ANY TWO LINE LEADS TO REVERSE ROTATION.
2. ACTUAL NUMBER OF INTERNAL PARALLEL CIRCUITS MAY VARY.
3. LEAD COLORS ARE OPTIONAL. LEADS MUST ALWAYS BE NUMBERED AS SHOWN.

CD0007

REV. DESC: ADDED "CK" PLANT CODE			
REV. LTR: E	BY: EAH	REVISED: 05/06/99 17:1	TDR: 0181040
∟00000		FILE: AAA00008370	MDL: -
		MTL: -	

BALDOR ELECTRIC Co.

3PH, DV, THERMAL, 12 LEADS