

**BALDOR • RELIANCE**

---

# Customer information packet

## CFSWDM23933T-5E

56M 4P TEFC HOR 254TC S/P9-12 SE ENCAP

Class - None

Division - Not Applicable

## Specifications

Enclosure	TEFC
Frame	254TC
Frame Material	Stainless Steel
Frequency	60.00 Hz
Haz Area Class and Group	None
Haz Area Division	Not Applicable
Motor Letter Type	Three Phase
Output @ Frequency	15.000 HP @ 60 HZ
Phase	3
Synchronous Speed @ Frequency	1800 RPM @ 60 HZ
Voltage @ Frequency	575.0 V @ 60 HZ
Agency Approvals	CSA NEMA PREMIUM UR
Ambient Temperature	40 °C
Auxillary Box	No Auxillary Box
Auxillary Box Lead Termination	None
Base Indicator	Rigid
Bearing Grease Type	Polyrex EM (-20F +300F)
Blower	None
Current @ Voltage	14.200 A @ 575.0 V
Design Code	A
Drip Cover	No Drip Cover
Duty Rating	CONT
Efficiency @ 100% Load	92.4 %
Electrically Isolated Bearing	Not Electrically Isolated
Feedback Device	NO FEEDBACK
Front Shaft Indicator	None
Heater Indicator	No Heater
High Voltage Full Load Amps	14.2 a
Insulation Class	H
Inverter Code	Inverter Ready

## Part detail

Revision	T
Type	AC
Mech. spec.	39E646
Base	
Status	PRD/A
Elec. spec.	39WGX761
Layout	39LYE646
Eff. date	02-10-2025
CD Diagram	CD0006
Poles	04
Leads	3#12
Proprietary	False
Created date	10-11-2018

<b>KVA Code</b>	H
<b>Lifting Lugs</b>	Standard Lifting Lugs
<b>Locked Bearing Indicator</b>	Locked Bearing
<b>Motor Lead Quantity/Wire Size</b>	3 @ 12 AWG
<b>Motor Lead Termination</b>	Flying Leads
<b>Motor Standards</b>	NEMA
<b>Motor Type</b>	3956M
<b>Mounting Arrangement</b>	F1
<b>Number of Poles</b>	4
<b>Overall Length</b>	24.18 IN
<b>Power Factor</b>	85
<b>Product Family</b>	WD All SS Encapsulated
<b>Pulley End Bearing Type</b>	Sealed Bearing
<b>Pulley Face Code</b>	C-Face
<b>Pulley Shaft Indicator</b>	Standard
<b>Rodent Screen</b>	None
<b>Service Factor</b>	1.15
<b>Shaft Diameter</b>	1.625 IN
<b>Shaft Ground Indicator</b>	No Shaft Grounding
<b>Shaft Rotation</b>	Reversible
<b>Shaft Slinger Indicator</b>	No Slinger
<b>Speed</b>	1765 rpm
<b>Speed Code</b>	Single Speed
<b>Starting Method</b>	Direct on line
<b>Thermal Device - Bearing</b>	None
<b>Thermal Device - Winding</b>	None
<b>Vibration Sensor Indicator</b>	No Vibration Sensor
<b>Winding Thermal 1</b>	None
<b>Winding Thermal 2</b>	None

**Nameplate**

**NP4427AAA02**

<b>CAT #</b>	CFSWDM23933T-5E		<b>WGT</b>	281	<b>LBS</b>		
<b>SPEC</b>	39E646X761G1		<b>ENCL</b>	TEFC			
<b>SER #</b>		<b>CC</b>	010A	<b>IP</b>	69		
<b>HP</b>	15	<b>MAG CUR</b>	5.8				
<b>VOLTS</b>	575			<b>NEMA NOM. EFF</b>	92.4		
<b>AMPS</b>	14.2		<b>PF</b>	85			
<b>RATING</b>	40C AMB-CONT						
<b>RPM</b>	1765		<b>MAX RPM</b>	2700			
<b>FRAME</b>	254TC	<b>HZ</b>	60	<b>CODE</b>	H	<b>CLASS</b>	H
<b>SER.F.</b>	1.15	<b>SF AMP</b>		<b>PH</b>	3	<b>DES</b>	A
<b>DE</b>	6309		<b>ODE</b>	6309			
<b>LUBRICATION</b>	POLYREX EM						
<b>ID LOGO</b>	<b>INVERTER TYPE</b>	<b>VPWM</b>	<b>CHP</b>	60	<b>TO</b>	90	1.5:1
<b>ID LOGO</b>	<b>WK2</b>	2.44	<b>CT</b>	30	<b>TO</b>	60	2:1
<b>ID LOGO</b>	<b>SL HZ</b>	1.2	<b>VT</b>	6	<b>TO</b>	60	10:1
<b>YR</b>							<b>QR</b>

## Parts list

Part number	Description	Quantity
SA361786	SA 39E646X761G1	1.000 ea
RA350988	RA 39E646X761G1	1.000 ea
09FN3001D01SP	EXTERNAL FAN, PLASTIC (COMES W/SCREW FRO	1.000 ea
39CB1001A01	39 MID-SECTION, - 3PC. BOX W/5.75-12 THD	1.000 ea
RM1070A79	O-RING, -051 VITON/FKM .070CS X 5.489ID	1.000 ea
10XN2520S10	1/4-20X 5/8 HEX HD CAP SS	4.000 ea
HW1001S25	WASHER, 1/4 SPLT LK, STAINLESS STEEL	4.000 ea
WD1000B16	T&B CX70TN OR L70P TERMINAL LUG	1.000 ea
10XN2520S08	SCREW, 1/4-20 X 1/2 HHCS SS	1.000 ea
39EP1904A02	FREP ENCL 309 BRG (STAINLESS) POLISHED	1.000 ea
RM1070A80	O-RING, VITON/FKM .070CS X 10.800ID	1.000 ea
HW4600F81	45 X 68 X 10 LIP SEAL, GRAPHITE INFUSED	1.000 ea
HW4600F80	45 X 62 X 4.5 AFS SEAL, GRAPHITE INFUSED	1.000 ea
HW4500S33	1/8 NPT STAINLESS #304 SS PLUG	4.000 ea
HW4500S33	1/8 NPT STAINLESS #304 SS PLUG	4.000 ea
HW5100A11	W3917-042 WVY WSHR (WB)	1.000 ea
39EP1905A01	PUEP ENCL 309 BRG (STAINLESS) POLISHED	1.000 ea
RM1070A80	O-RING, VITON/FKM .070CS X 10.800ID	1.000 ea
HW4600F81	45 X 68 X 10 LIP SEAL, GRAPHITE INFUSED	1.000 ea
HW4600F80	45 X 62 X 4.5 AFS SEAL, GRAPHITE INFUSED	1.000 ea
RM1070A78	O-RING, -012 VITON/FKM .070CS X .364ID	4.000 ea
39FH4004A01	304 SS FANCOVER SPUN W/SLOTS & MTG(POLIS	1.000 ea
10XN2520FS08	HEX HD CAP SCREW 1/4-20 X 1/2 SS FOOD SA	3.000 ea
HW1001S25	WASHER, 1/4 SPLT LK, STAINLESS STEEL	3.000 ea
39CB1500A01	39 LID, 3 PC. BOX STAINLESS (POLISHED)	1.000 ea
RM1070A79	O-RING, -051 VITON/FKM .070CS X 5.489ID	1.000 ea
HW2502G25	#303 SS,SQ KEY 3/8 X 2.880	1.000 ea
MJ5001A27	32220KN GRAY SEALER *MIN BUY 4 QTS=1GAL	0.005 qt
MJ5004A93	FOOD GRADE (H1 RATED) ANTISEIZE THRD COM	0.005 ea
HA5027A09	DRAIN KIT,(2)HA4002A03 BAGGED W/LABEL	1.000 ea
MJ1000A02	GREASE, POLYREX EM EXXON	0.030 lb

HA3105FS13	THRUBOLT, 3/8-16 X 16.250 SS FOOD SAFE	4.000 ea
HW2502F08	KEY, 5/16 SQ X .875 303 SS	1.000 ea
51XB1214S20	12-14X1.25 HXWSSLD SERTYB, SS	1.000 ea
WD5603A02	KIT, CLOSED-END LEAD SPLICE (18-14GA)	1.000 ea
40PA1000	PACKAGING GROUP	1.000 ea
MN416A01	TAG-INSTAL-MAINT no wire (2500bx)4/22	1.000 ea
FE-0000013	ZRTG FE ASSEMBLY	1.000 ea
LD7020D03	LEAD SET, 12AWG, 3 LEAD, 20" LONG LEADS	1.000 ea
HA1025A03	FELT WSH 2.1875 OD X 1.170 ID X .25 #321	8.000 ea
PE-0000003	ZRTG PE ASSEMBLY	1.000 ea

**AC Induction Motor Performance Data**

Record # 73070

Typical performance - not guaranteed values

Winding: 39WGX761-R003		Type: 3956M	Enclosure: TEFC	
<b>Nameplate Data</b>			<b>575 V, 60 Hz: Single Voltage Motor</b>	
Rated Output (HP)	15	Full Load Torque	44.6 LB-FT	
Volts	575	Start Configuration	direct on line	
Full Load Amps	14.2	Breakdown Torque	178 LB-FT	
R.P.M.	1765	Pull-up Torque	57.2 LB-FT	
Hz	60 Phase	3	Locked-rotor Torque	84.2 LB-FT
NEMA Design Code	A KVA Code	H	Starting Current	103 A
Service Factor (S.F.)	1.15	No-load Current	5.78 A	
NEMA Nom. Eff.	92.4 Power Factor	85	Line-line Res. @ 25°C	0.788 Ω
Rating - Duty	40C AMB-CONT		Temp. Rise @ Rated Load	65°C
S.F. Amps			Temp. Rise @ S.F. Load	79°C
			Locked-rotor Power Factor	31.9
			Rotor inertia	2.45 LB-FT <sup>2</sup>

**Load Characteristics 575 V, 60 Hz, 15 HP**

% of Rated Load	25	50	75	100	125	150	S.F.
Power Factor	48	70	81	85	87	88	86
Efficiency	87.2	91.2	92.6	92.8	91.8	90.7	92.2
Speed	1792	1785	1777	1769	1760	1748	1764
Line amperes	6.74	8.72	11.2	14.2	17.5	21.7	16.2

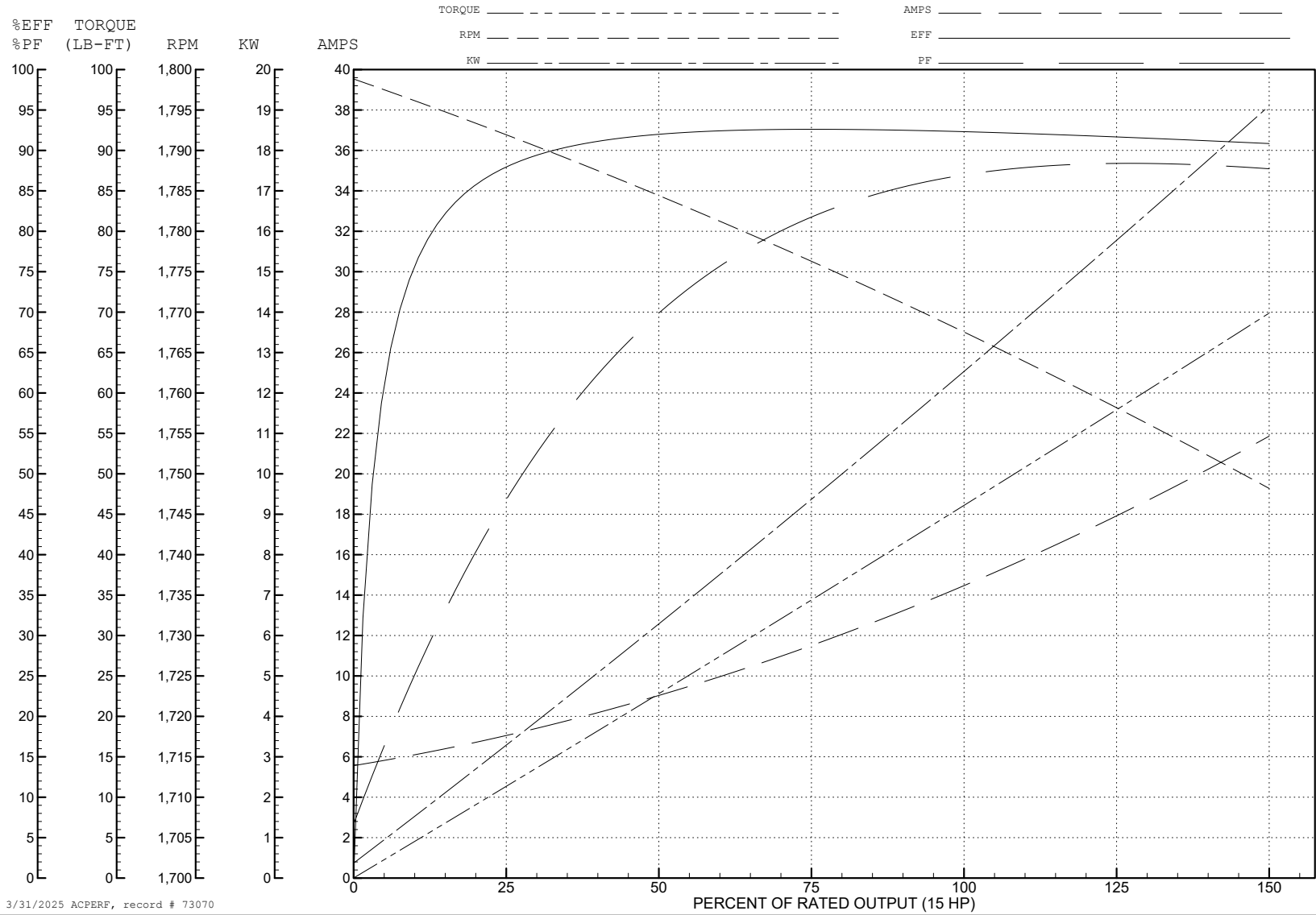
ABB Motors and Mechanical Inc.

WINDING # 39WGx761

Typical performance - not guaranteed values.

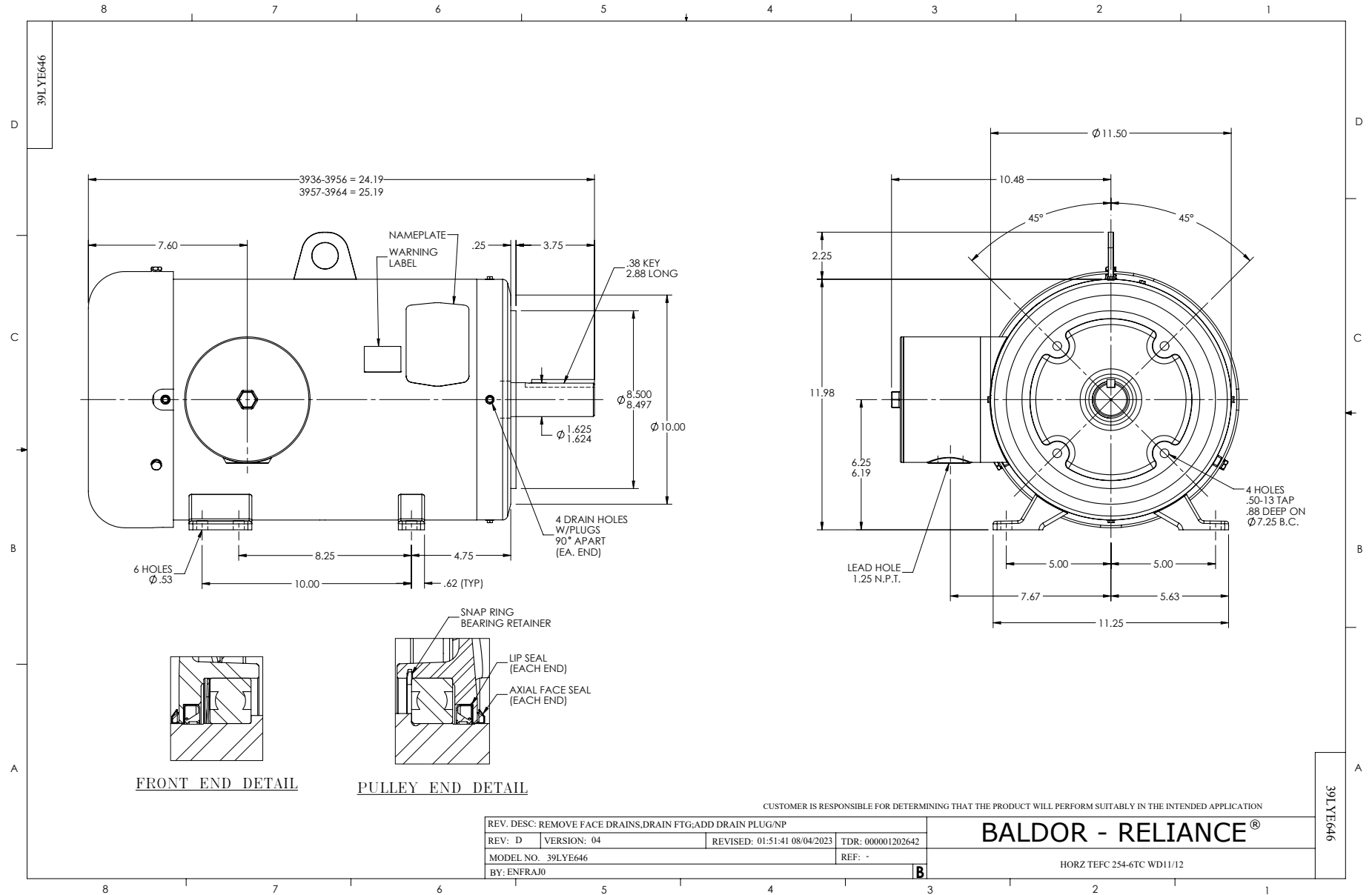
15 HP 3 PH 60 HZ 1765 RPM 575 V 3956M

TORQUES (LB-FT): PO=178 PU=57.2 LR=84.2 LRA=103



3/31/2025 ACPERF, record # 73070





CD0006



NOTES:

1. THREE LEAD MOTOR MAY BE EITHER WYE CONNECTED OR DELTA CONNECTED.
2. INTERCHANGE ANY TWO LINE LEADS TO REVERSE ROTATION.
3. OPTIONAL THERMOSTATS ARE PROVIDED WHEN SPECIFIED.
4. ACTUAL NUMBER OF INTERNAL PARALLEL CIRCUITS MAY VARY.
5. LEAD COLORS ARE OPTIONAL. LEADS MUST BE NUMBERED AS SHOWN.

CD0006

REV. DESC: ADD CLASS CONN00000007		
REV. LTR: E	VERSION: 01	TDR: 000001099922
FILE: \AAA\00005\141	REVISED: 10:24:49 02/19/2019	BY: ENBRIRO
MTL: -	© □	

**BALDOR - RELIANCE®**

3PH, SV, 3 LEADS, WYE OR DELTA CONNECTED

SH 1 of 1