



---

# Customer information packet

## CL3501

.33HP, 1725RPM, 1PH, 60HZ, 56C, 3414L, TEFC, F1

Class - None

Division - Not Applicable

## Specifications

|                                |                                                             |
|--------------------------------|-------------------------------------------------------------|
| Enclosure                      | TEFC                                                        |
| Frame                          | 56C                                                         |
| Frame Material                 | Steel                                                       |
| Frequency                      | 60.00 Hz                                                    |
| Haz Area Class and Group       | None                                                        |
| Haz Area Division              | Not Applicable                                              |
| Motor Letter Type              | Cap Start, Induction Run                                    |
| Output @ Frequency             | .330 HP @ 60 HZ                                             |
| Phase                          | 1                                                           |
| Synchronous Speed @ Frequency  | 1800 RPM @ 60 HZ                                            |
| Voltage @ Frequency            | 230.0 V @ 60 HZ<br>208.0 V @ 60 HZ<br>115.0 V @ 60 HZ       |
| Agency Approvals               | CSA<br>UR                                                   |
| Ambient Temperature            | 40 °C                                                       |
| Auxillary Box                  | No Auxillary Box                                            |
| Auxillary Box Lead Termination | None                                                        |
| Base Indicator                 | Rigid                                                       |
| Bearing Grease Type            | Polyrex EM (-20F +300F)                                     |
| Blower                         | None                                                        |
| Current @ Voltage              | 6.000 A @ 115.0 V<br>3.200 A @ 208.0 V<br>3.000 A @ 230.0 V |
| Design Code                    | N                                                           |
| Drip Cover                     | No Drip Cover                                               |
| Duty Rating                    | CONT                                                        |
| Efficiency @ 100% Load         | 60.0 %                                                      |
| Electrically Isolated Bearing  | Not Electrically Isolated                                   |
| Feedback Device                | NO FEEDBACK                                                 |
| Front Face Code                | Standard                                                    |
| Front Shaft Indicator          | None                                                        |

## Part detail

|              |            |
|--------------|------------|
| Revision     | AM         |
| Type         | AC         |
| Mech. spec.  | 34C062     |
| Base         |            |
| Status       | PRD/A      |
| Elec. spec.  | 34WG5507   |
| Layout       | 34LYC062   |
| Eff. date    | 11-20-2024 |
| CD Diagram   | CD0001     |
| Poles        | 04         |
| Leads        | 6#18       |
| Proprietary  | False      |
| Created date | 01-01-0001 |

|                               |                     |
|-------------------------------|---------------------|
| Heater Indicator              | No Heater           |
| High Voltage Full Load Amps   | 3.0 a               |
| Insulation Class              | F                   |
| Inverter Code                 | Not Inverter        |
| KVA Code                      | L                   |
| Lifting Lugs                  | No Lifting Lugs     |
| Locked Bearing Indicator      | Locked Bearing      |
| Motor Lead Exit               | Ko Box              |
| Motor Lead Quantity/Wire Size | 6 @ 18 AWG          |
| Motor Lead Termination        | Flying Leads        |
| Motor Standards               | NEMA                |
| Motor Type                    | 3414L               |
| Mounting Arrangement          | F1                  |
| Number of Poles               | 4                   |
| Overall Length                | 11.35 IN            |
| Power Factor                  | 60                  |
| Product Family                | General Purpose     |
| Pulley End Bearing Type       | Ball                |
| Pulley Face Code              | C-Face              |
| Pulley Shaft Indicator        | Standard            |
| Rodent Screen                 | None                |
| Service Factor                | 1.35                |
| Shaft Diameter                | 0.625 IN            |
| Shaft Extension Location      | Pulley End          |
| Shaft Ground Indicator        | No Shaft Grounding  |
| Shaft Rotation                | Reversible          |
| Shaft Slinger Indicator       | No Slinger          |
| Speed                         | 1725 rpm            |
| Speed Code                    | Single Speed        |
| Starting Method               | Direct on line      |
| Thermal Device - Bearing      | None                |
| Thermal Device - Winding      | None                |
| Vibration Sensor Indicator    | No Vibration Sensor |
| Winding Thermal 1             | None                |

**Winding Thermal 2**

**None**

---

**Nameplate**

| <b>NP1256L</b>      |              |             |            |            |   |              |   |  |  |
|---------------------|--------------|-------------|------------|------------|---|--------------|---|--|--|
| <b>CAT.NO.</b>      | CL3501       |             |            |            |   |              |   |  |  |
| <b>SPEC.</b>        | 34C62-5507   |             |            |            |   |              |   |  |  |
| <b>HP</b>           | .33          |             |            |            |   |              |   |  |  |
| <b>VOLTS</b>        | 115/208-230  |             |            |            |   |              |   |  |  |
| <b>AMP</b>          | 6/3.2-3      |             |            |            |   |              |   |  |  |
| <b>RPM</b>          | 1725         |             |            |            |   |              |   |  |  |
| <b>FRAME</b>        | 56C          |             | <b>HZ</b>  | 60         |   | <b>PH</b>    | 1 |  |  |
| <b>SER.F.</b>       | 1.35         | <b>CODE</b> | L          | <b>DES</b> | N | <b>CLASS</b> | F |  |  |
| <b>NEMA-NOM-EFF</b> | 60           | <b>PF</b>   | 60         |            |   |              |   |  |  |
| <b>RATING</b>       | 40C AMB-CONT |             |            |            |   |              |   |  |  |
| <b>CC</b>           |              |             |            |            |   |              |   |  |  |
| <b>DE</b>           | 6203         |             | <b>ODE</b> | 6203       |   |              |   |  |  |
| <b>ENCL</b>         | TEFC         | <b>SN</b>   |            |            |   |              |   |  |  |
|                     | SFA 6.8/3.4  |             |            |            |   |              |   |  |  |

## Parts list

| Part number   | Description                              | Quantity |
|---------------|------------------------------------------|----------|
| SA008619      | SA 34C62-5507                            | 1.000 ea |
| RA005066      | RA 34C62-5507                            | 1.000 ea |
| EC1189A02SP   | 61B2D120189NNBA ELEC CAP, 189-227MFD, 12 | 1.000 ea |
| NS2512A01     | INSULATOR, CONDUIT BOX X                 | 1.000 ea |
| 34CB3002A     | CB CAST W/.88 DIA HOLE                   | 1.000 ea |
| 34GS1029A01   | GASKET, CONDUIT BOX                      | 1.000 ea |
| 51XB1016A07   | 10-16 X 7/16 HXWSSLD SERTYB              | 2.000 ea |
| 11XW1032G06   | 10-32 X .38, TAPTITE II, HEX WSHR SLTD U | 1.000 ea |
| 51XW0832A07   | 8-32 X .44, TAPTITE II, HEX WSHR SLTD SE | 2.000 ea |
| 34EP3102A01SP | FR ENDPLATE, MACH                        | 1.000 ea |
| 34CB4800SP    | CAPACITOR COVER, STAMPED PRIMED          | 1.000 ea |
| 34GS3000SP    | GASKET, CAPACITOR BOX                    | 1.000 ea |
| 51XB1016A05   | 10-16X5/16HX WA SL SR TYB (F/S)          | 2.000 ea |
| WD1000A16     | 2-520128-2 AMP FLAG TERMINAL(4M/RL)      | 1.000 ea |
| HW5100A03     | WAVY WASHER (W1543-017)                  | 1.000 ea |
| 34EP3300A24SP | PU ENDPLATE, MACH                        | 1.000 ea |
| 51XN1032A20   | 10-32 X 1 1/4 HX WS SL SR                | 2.000 ea |
| 34FN3002A01SP | EXTERNAL FAN, PLASTIC, .637/.639 HUB W/  | 1.000 ea |
| 34FH4002A01SP | IEC FH NO GREASER PRIMED                 | 1.000 ea |
| 51XW1032A06   | 10-32 X .38, TAPTITE II, HEX WSHR SLTD S | 3.000 ea |
| 34CB4517      | CB LID 4 MTG HOLES .22 DIA STAMPED, FOR  | 1.000 ea |
| 34GS1031A01   | GASKET, FLAT CONDUIT BOX LID (LEXIDE)    | 1.000 ea |
| 51XW0832A07   | 8-32 X .44, TAPTITE II, HEX WSHR SLTD SE | 4.000 ea |
| HW2501D13     | KEY, 3/16 SQ X 1.375                     | 1.000 ea |
| HA7000A04     | KEY RETAINER 0.625 DIA SHAFTS            | 1.000 ea |
| MG1050G01     | CELEROL MEDIUM CHARCOAL METALLIC GRAY    | 0.014 ga |
| 85XU0407S04   | 4X1/4 U DRIVE PIN STAINLESS              | 2.000 ea |
| SP5051B16     | MDL 34 TORQ STAT SW,TYPE L , STD F1 & F2 | 1.000 ea |
| HA3100A12     | THRUBOLT 10-32 X 7.375                   | 4.000 ea |
| LC0001A01     | CONN LABEL / WARNING LABEL (LC0001 / LB1 | 1.000 ea |
| NP1256L       | ALUM UL CC INDUSTRIAL MOTOR A60          | 1.000 ea |

34PA1002

PKG GRP, PRINT PK1001A01

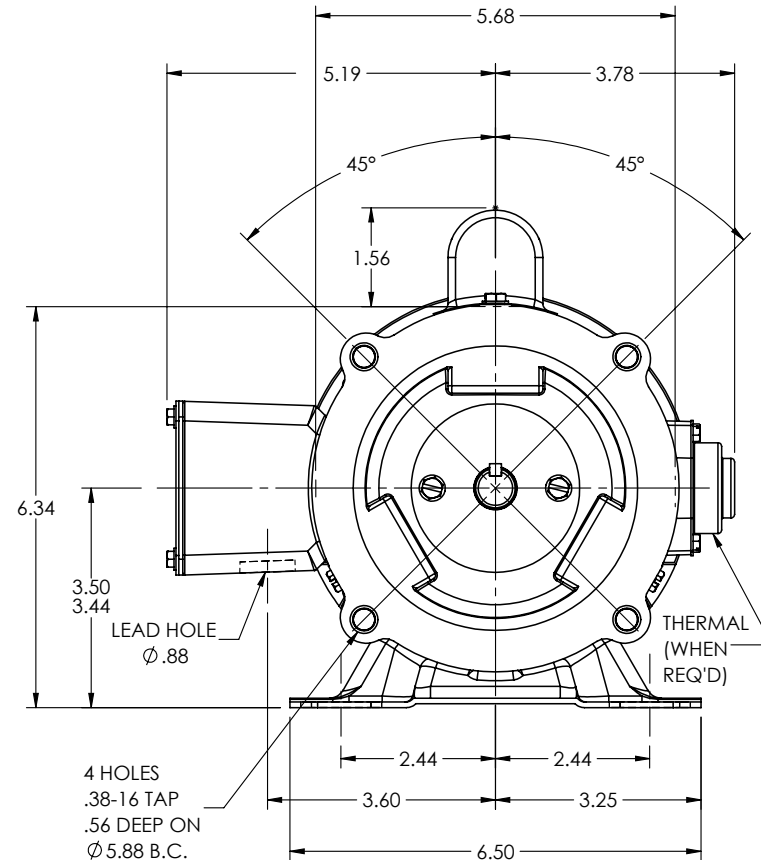
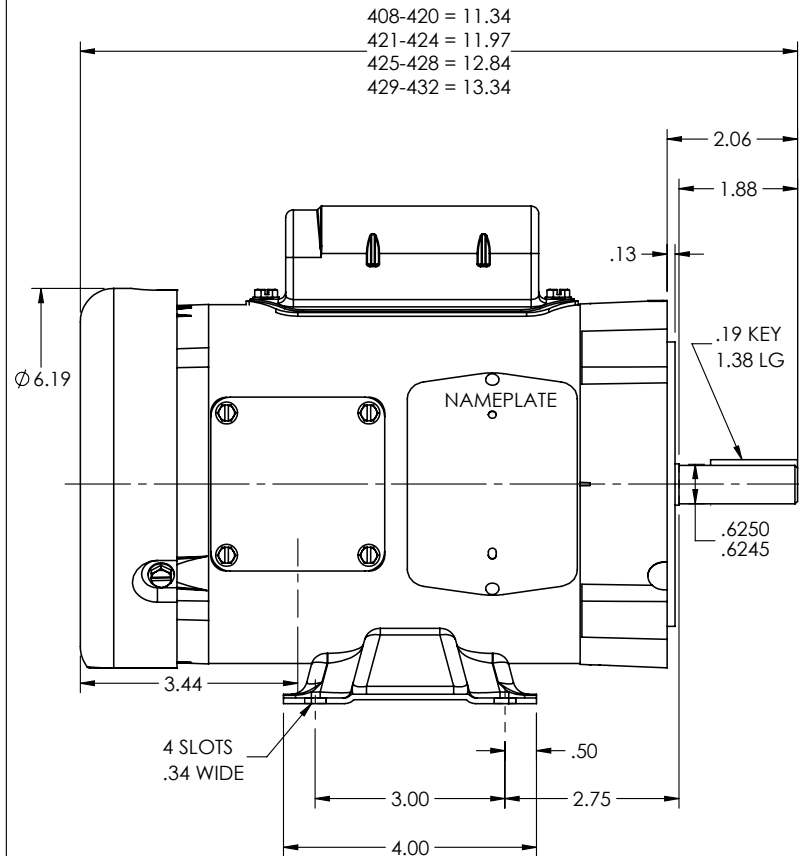
1.000 ea

MN416A01

TAG-INSTAL-MAINT no wire (2500bx)4/22

1.000 ea

34LYC062



CUSTOMER IS RESPONSIBLE FOR DETERMINING THAT THE PRODUCT WILL PERFORM SUITABLY IN THE INTENDED APPLICATION

REV. DESC: LOAD TO SOLIDWORKS

REV: L    VERSION: 03    REVISED: 04:53:13 08/30/2022    TDR: 000001194274

34LYC062

MODEL NO. 34LYC062

BY: ENFRAJ0

REF: -

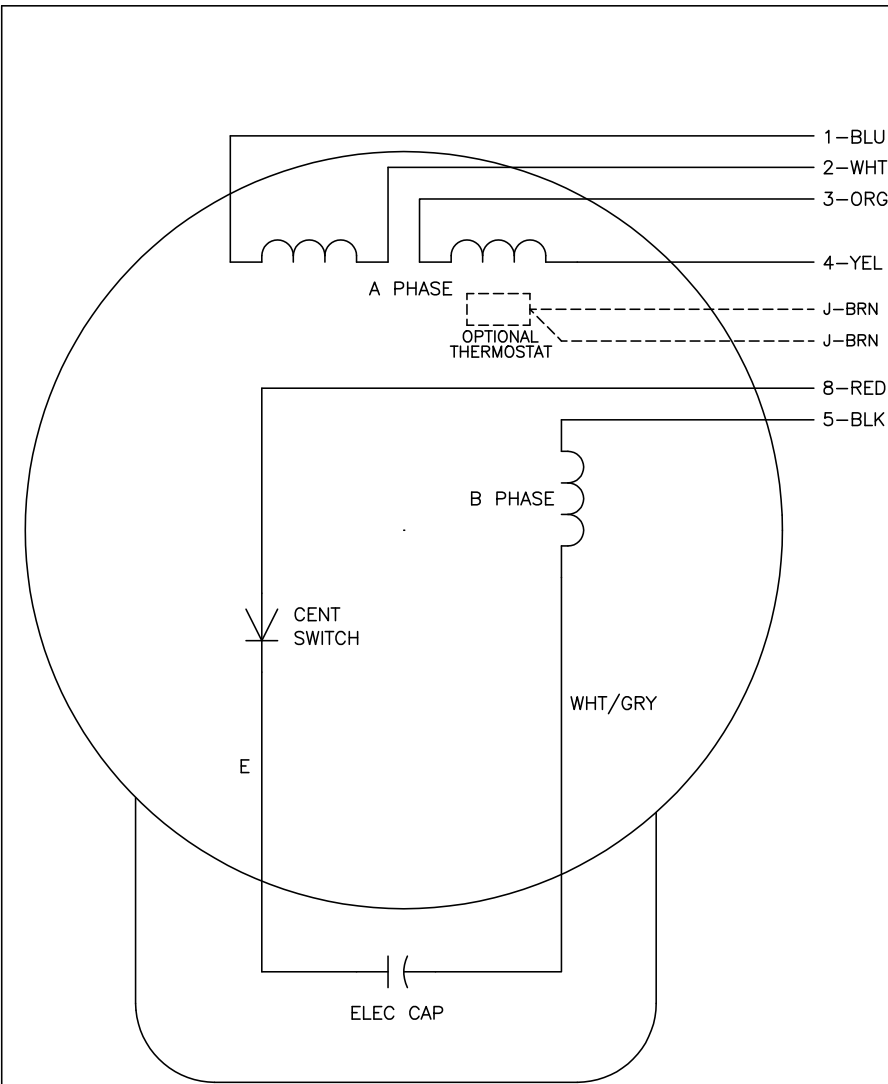
**BALDOR - RELIANCE®**

STD HORZ MODEL 34L NEMA 56C TEFC

34LYC062



CD0001



|          | LINE A | LINE B | JOIN  |
|----------|--------|--------|-------|
| HIGH STD | 1      | 4,5    | 2,3,8 |
| HIGH OPP | 1      | 4,8    | 2,3,5 |
| LOW STD  | 1,3,8  | 2,4,5  | -     |
| LOW OPP  | 1,3,5  | 2,4,8  | -     |

**NOTES:**

1. STANDARD ROTATION IS CCW FACING END OPPOSITE SHAFT EXTENSION.
2. OPTIONAL THERMOSTAT IS PROVIDED WHEN SPECIFIED.
3. MULTIPLE CAPACITORS ARE CONNECTED IN PARALLEL UNLESS OTHERWISE SPECIFIED.
4. LEAD COLORS ARE OPTIONAL. LEADS MUST ALWAYS BE NUMBERED AS SHOWN.

|                                           |         |                        |              |
|-------------------------------------------|---------|------------------------|--------------|
| REV. DESC: REVISE TO SHOW OPTIONAL COLORS |         |                        |              |
| REV. LTR: D                               | BY: JLP | REVISED: 04/08/99 1:16 | TDR: 0178636 |
| 100000                                    |         | FILE: AAA00007405      | MDL: -       |
|                                           |         | MTL: -                 |              |

**BALDOR ELECTRIC Co.**

TYPE L, DV, REV, 6 LEADS

CD0001