



Customer information packet

CM2333T-58

15HP, 1460RPM, 3PH, 50HZ, 254TC, 0760M, TEFC, F

Class - None

Division - Not Applicable

Specifications

Enclosure	TEFC
Frame	254TC
Frame Material	Iron
Frequency	50.00 Hz
Haz Area Class and Group	None
Haz Area Division	Not Applicable
Motor Letter Type	Three Phase
Output @ Frequency	15.000 HP @ 50 HZ
Phase	3
Synchronous Speed @ Frequency	1500 RPM @ 50 HZ
Voltage @ Frequency	380.0 V @ 50 HZ 415.0 V @ 50 HZ
Agency Approvals	UR CSA
Ambient Temperature	40 °C
Auxillary Box	No Auxillary Box
Auxillary Box Lead Termination	None
Base Indicator	Rigid
Bearing Grease Type	Polyrex EM (-20F +300F)
Blower	None
Current @ Voltage	22.000 A @ 380.0 V 22.500 A @ 415.0 V
Design Code	A
Drip Cover	No Drip Cover
Duty Rating	CONT
Efficiency @ 100% Load	90.2 %
Electrically Isolated Bearing	Not Electrically Isolated
Feedback Device	NO FEEDBACK
Front Face Code	Standard
Front Shaft Indicator	None
Heater Indicator	No Heater
High Voltage Full Load Amps	22.0 a

Part detail

Revision	J
Type	AC
Mech. spec.	07K349
Base	
Status	PRD/A
Elec. spec.	07WGY251
Layout	07LYK349
Eff. date	05-06-2024
CD Diagram	CD0382
Poles	04
Leads	6#12
Proprietary	False
Created date	05-14-2013

Insulation Class	F
Inverter Code	Not Inverter
KVA Code	J
Lifting Lugs	Standard Lifting Lugs
Locked Bearing Indicator	Locked Bearing
Motor Lead Exit	Ko Box
Motor Lead Quantity/Wire Size	6 @ 12 AWG
Motor Lead Termination	Flying Leads
Motor Standards	NEMA
Motor Type	0760M
Mounting Arrangement	F1
Number of Poles	4
Overall Length	23.32 IN
Power Factor	82
Product Family	General Purpose
Pulley End Bearing Type	Ball
Pulley Face Code	C-Face
Pulley Shaft Indicator	Standard
Rodent Screen	None
RoHS Status	ROHS COMPLIANT
Service Factor	1.00
Shaft Diameter	1.625 IN
Shaft Extension Location	Pulley End
Shaft Ground Indicator	No Shaft Grounding
Shaft Rotation	Reversible
Shaft Slinger Indicator	No Slinger
Speed	1460 rpm
Speed Code	Single Speed
Starting Method	Wye Start - Delta Run
Thermal Device - Bearing	None
Thermal Device - Winding	None
Vibration Sensor Indicator	No Vibration Sensor
Winding Thermal 1	None
Winding Thermal 2	None

Nameplate

NP1256L									
CAT.NO.	CM2333T-58								
SPEC.	07K349Y251G2								
HP	15								
VOLTS	380-415								
AMP	22-22.5								
RPM	1460								
FRAME	254TC		HZ	50		PH	3		
SER.F.	1.00	CODE	J	DES	A	CLASS	F		
NEMA-NOM-EFF	90.2	PF	82						
RATING	40C AMB-CONT								
CC									
DE	6309		ODE	6307					
ENCL	TEFC	SN							
	IP44								

Parts list

Part number	Description	Quantity
SA263020	SA 07K349Y251G2	1.000 ea
RA249743	RA 07K349Y251G2	1.000 ea
37FN3002A01SP	EXFN, PLASTIC, 9.00 OD, 1.155 ID	1.000 ea
HW3201A01	1/2-13 EYEBOLT	1.000 ea
09CB3002SP	CB W/1.38 LEAD HOLE FOR 37, 39, 307 & 30	1.000 ea
09GS1000	GASKET-CONDUIT BOX, 1/16 THICK LEXIDE	1.000 ea
51XW2520A12	.25-20 X .75, TAPTITE II, HEX WSHR SLTD	2.000 ea
59XW2520G07	.25-20X.44,HEX SER WSHR,TAPTITE 2,GREEN	1.000 ea
37EP1101A86	FR TEFC 37M 307 BRG W/GRSR, RELF, .125 D	1.000 ea
HW4500A01	1641B(ALEMITE)400 UNIV, GREASE FITT	1.000 ea
HA4051A00	PLASTIC CAP FOR GREASE FITTING	1.000 ea
HW4500A17	317400 ALEMITE GREASE RELIEF	1.000 ea
HA4054	SHORT T-DRAIN FITTING, .125" N.P.T.	1.000 ea
HW5100A08	W3118-035 WVY WSHR (WB)	1.000 ea
07EP1306A05	PU ENDPLATE FOR CP MOTORS NEMA 254-6TC	1.000 ea
HW4500A01	1641B(ALEMITE)400 UNIV, GREASE FITT	1.000 ea
HA4051A00	PLASTIC CAP FOR GREASE FITTING	1.000 ea
HW4500A17	317400 ALEMITE GREASE RELIEF	1.000 ea
HA4054	SHORT T-DRAIN FITTING, .125" N.P.T.	1.000 ea
10XN2520A36	1/4-20X 2 1/4 HEX HD X	4.000 ea
HW1001A25	LOCKWASHER 1/4, ZINC PLT .493 OD, .255 I	4.000 ea
XY3118A12	5/16-18 HEX NUT DIRECTIONAL SERRATION	4.000 ea
51XB1214A20	12-14X1.25 HXWSSLD SERTYB	1.000 ea
07FH4007SP	PRIMED	1.000 ea
51XW1032A06	10-32 X .38, TAPTITE II, HEX WSHR SLTD S	3.000 ea
09CB3501SP	CONDUIT BOX LID FOR 09CB3001 & 09CB3002	1.000 ea
09GS1013SP	GS FOR 09CB3501, 12CB1500 & 12CB1503 LID	1.000 ea
51XW2520A12	.25-20 X .75, TAPTITE II, HEX WSHR SLTD	2.000 ea
HW2501G25	KEY, 3/8 SQ X 2.875	1.000 ea
HA7000A03	KEY RETAINER RING 1.62 & 1.88 DIA. SH	1.000 ea
HW4600B67	V-RING SLINGER 1.770 X 2.170 X .28 VITON	1.000 ea

85XU0407S04	4X1/4 U DRIVE PIN STAINLESS	2.000 ea
MJ1000A02	GREASE, POLYREX EM EXXON	0.050 lb
HA3104A31	THRUBOLT .31-18 X 15.875	4.000 ea
MG1050G01	CELEROL MEDIUM CHARCOAL METALLIC GRAY	0.036 ga
LB1624	COMBINED WARNING LABEL, ISO/ANSI PICTOGR	1.000 ea
LC0382	CONNECTION LABEL	1.000 ea
NP1256L	ALUM UL CC INDUSTRIAL MOTOR A60	1.000 ea
07PA1011	PKG GRP, 07 CAST IRON PK1181	1.000 ea
MN416A01	TAG-INSTAL-MAINT no wire (2500bx)4/22	1.000 ea

AC Induction Motor Performance Data

Record # 50297

Typical performance - not guaranteed values

Winding: 07WGY251-R005		Type: 0760M		Enclosure: TEFC	
Nameplate Data			415 V, 50 Hz: High Voltage Connection		
Rated Output (HP)		15	Full Load Torque		53.7 LB-FT
Volts		380-415	Start Configuration		direct on line
Full Load Amps		22-22.5	Breakdown Torque		207 LB-FT
R.P.M.		1460	Pull-up Torque		86.4 LB-FT
Hz	50 Phase	3	Locked-rotor Torque		135 LB-FT
NEMA Design Code	A KVA Code	J	Starting Current		165 A
Service Factor (S.F.)		1	No-load Current		9.95 A
NEMA Nom. Eff.	90.2 Power Factor	82	Line-line Res. @ 25°C		0.593 Ω
Rating - Duty		40C AMB-CONT	Temp. Rise @ Rated Load		79°C
			Locked-rotor Power Factor		40.3
			Rotor inertia		1.48 LB-FT ²

Load Characteristics 415 V, 50 Hz, 15 HP

% of Rated Load	25	50	75	100	125	150
Power Factor	40	60	71	77	80	82
Efficiency	85.7	90.7	91.2	90.2	89.1	87
Speed	1491	1483	1473	1463	1452	1438
Line amperes	11.2	14.3	17.9	22.3	27.1	32.7

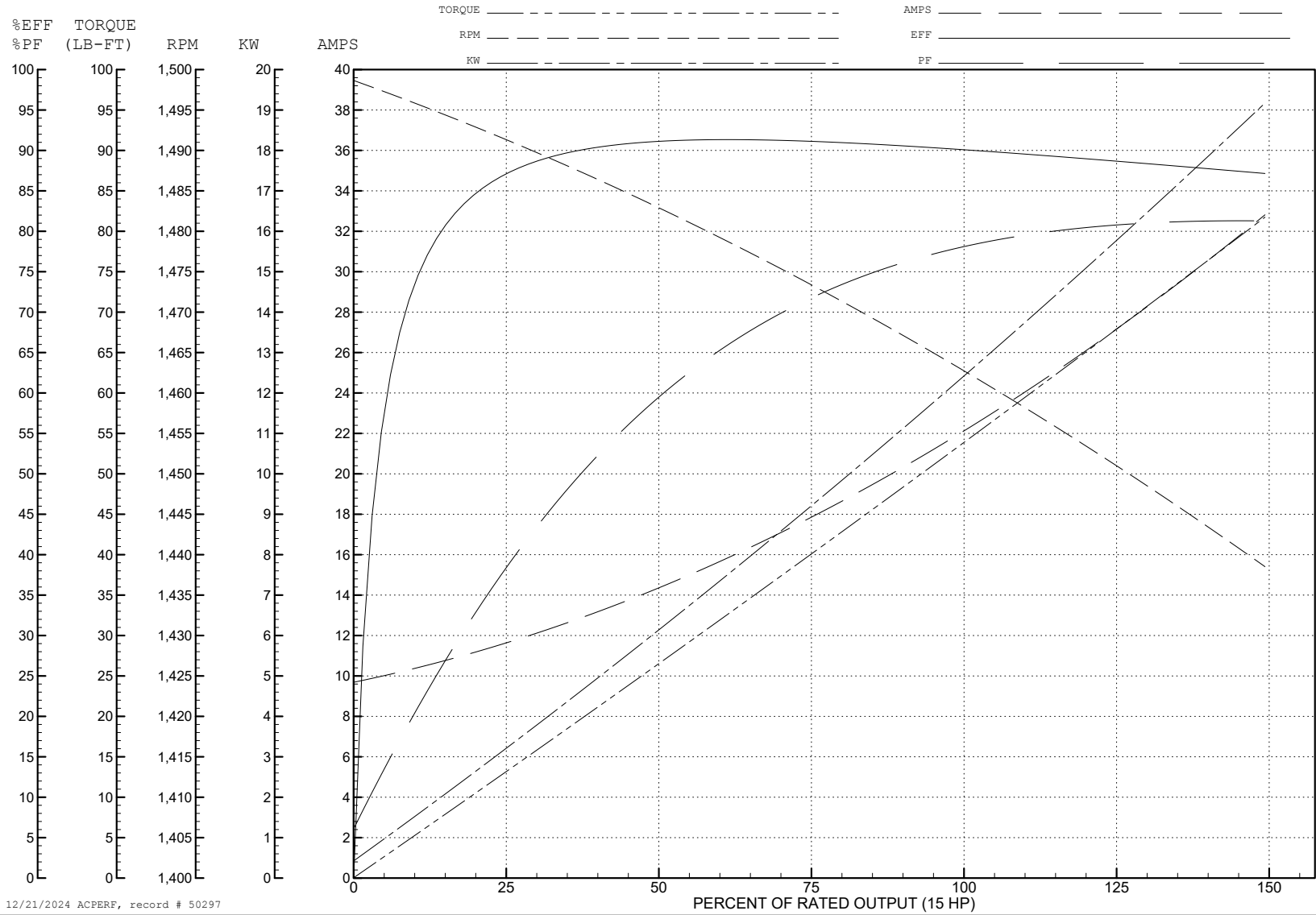
ABB Motors and Mechanical Inc.

WINDING # 07WGY251

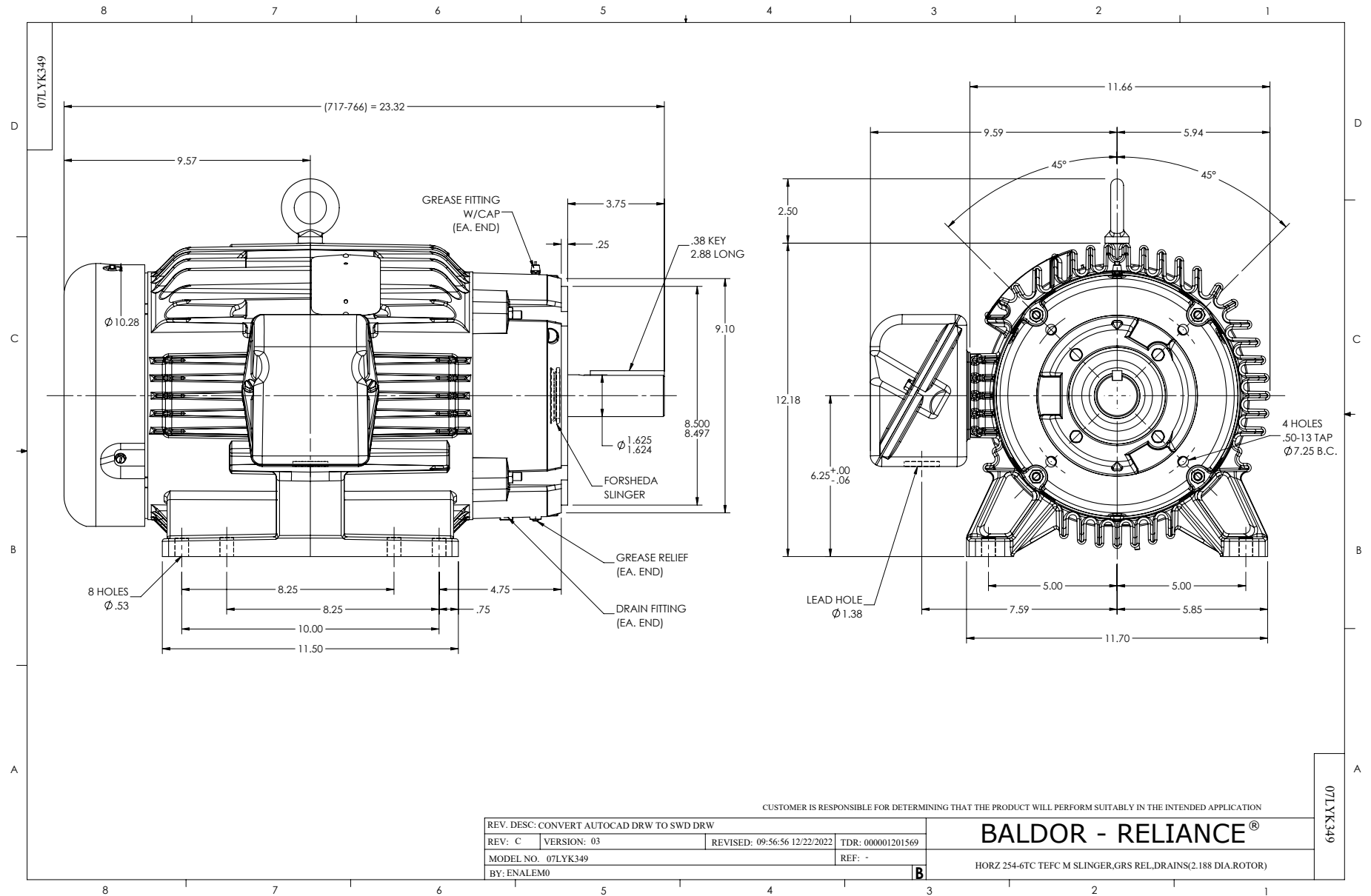
Typical performance - not guaranteed values.

15 HP 3 PH 50 HZ 1460 RPM 415 V 0760M

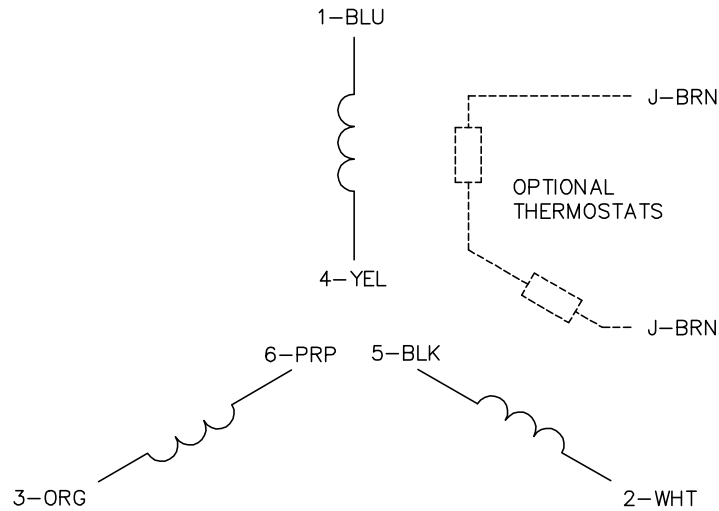
TORQUES (LB-FT): PO=207 PU=86.4 LR=135 LRA=165



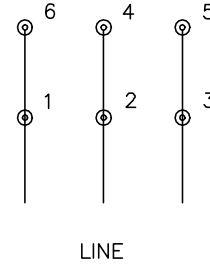
12/21/2024 ACPERF, record # 50297



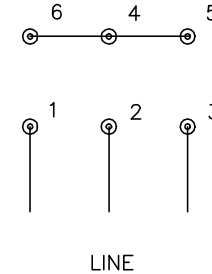
CD0382



RUN CONNECTION (1D)



START CONNECTION (1Y)



NOTES:

1. INTERCHANGE ANY TWO LINE LEADS TO REVERSE ROTATION.
2. OPTIONAL THERMOSTATS ARE PROVIDED WHEN SPECIFIED.
3. ACTUAL NUMBER OF INTERNAL PARALLEL CIRCUITS MAY BE A MULTIPLE OF THOSE SHOWN ABOVE.
4. LEAD COLORS ARE OPTIONAL. LEADS MUST ALWAYS BE NUMBERED AS SHOWN.
5. FOR ACROSS-THE-LINE STARTING, USE 'RUN' CONNECTION.

CD0382

REV. DESC: ADD CLASS CONN00000007		
REV. LTR: F	VERSION: 01	TDR: 000001099922
FILE: \AAA\00005\243	REVISED: 09:05:32 02/19/2019	BY: ENBRIRO
MTL: -	© □	

BALDOR - RELIANCE®

3PH, SV, 6 LEADS, Y START/D RUN

SH 1 of 1