



---

# Customer information packet

## 34A62-284

2HP, 3450RPM, 3PH, 60HZ, 56C, 3428M, TEFC, F1

Class -

Division - Not Applicable

## Specifications

Enclosure	TEFC
Frame	56C
Frame Material	Steel
Frequency	60.00 Hz
Haz Area Division	Not Applicable
Motor Letter Type	Three Phase
Output @ Frequency	2.000 HP @ 60 HZ
Phase	3
Synchronous Speed @ Frequency	3600 RPM @ 60 HZ
Voltage @ Frequency	460.0 V @ 60 HZ 208.0 V @ 60 HZ 230.0 V @ 60 HZ
Agency Approvals	CSA UR
Ambient Temperature	40 °C
Auxillary Box	No Auxillary Box
Auxillary Box Lead Termination	None
Base Indicator	RG
Bearing Grease Type	Polyrex EM (-20F +300F)
Blower	None
Current @ Voltage	2.900 A @ 460.0 V 5.800 A @ 230.0 V 6.200 A @ 208.0 V
Design Code	B
Drip Cover	No Drip Cover
Duty Rating	CONT
Efficiency @ 100% Load	80.0 %
Electrically Isolated Bearing	Not Electrically Isolated
Feedback Device	NO FEEDBACK
Front Face Code	Standard
Front Shaft Indicator	None
Heater Indicator	No Heater

## Part detail

Revision	U
Type	AC
Mech. spec.	34A062
Base	
Status	INA/A
Elec. spec.	34WG0284
Layout	34LYA062
Eff. date	05-17-2016
CD Diagram	CD0005
Poles	02
Leads	9#18
Proprietary	False
Created date	01-01-0001

High Voltage Full Load Amps	2.9 a
Insulation Class	B
Inverter Code	Not Inverter
KVA Code	H
Lifting Lugs	No Lifting Lugs
Locked Bearing Indicator	Locked Bearing
Motor Lead Exit	Ko Box
Motor Lead Quantity/Wire Size	9 @ 18 AWG
Motor Lead Termination	Flying Leads
Motor Standards	NEMA
Motor Type	3428M
Mounting Arrangement	F1
Number of Poles	2
Overall Length	12.85 IN
Power Factor	80
Product Family	General Purpose
Pulley End Bearing Type	Ball
Pulley Face Code	C-Face
Pulley Shaft Indicator	Standard
Rodent Screen	None
Service Factor	1.15
Shaft Diameter	0.625 IN
Shaft Extension Location	Pulley End
Shaft Ground Indicator	No Shaft Grounding
Shaft Rotation	Reversible
Shaft Slinger Indicator	No Slinger
Speed	3450 rpm
Speed Code	Single Speed
Starting Method	Direct on line
Thermal Device - Bearing	None
Thermal Device - Winding	None
Vibration Sensor Indicator	No Vibration Sensor

**Nameplate**

<b>NP1256L</b>									
<b>CAT.NO.</b>									
<b>SPEC.</b>	34A62-284								
<b>HP</b>	2								
<b>VOLTS</b>	208-230/460								
<b>AMP</b>	6.2-5.8/2.9								
<b>RPM</b>	3450								
<b>FRAME</b>	56C		<b>HZ</b>	60		<b>PH</b>	3		
<b>SER.F.</b>	1.15	<b>CODE</b>	H	<b>DES</b>	B	<b>CLASS</b>	B		
<b>NEMA-NOM-EFF</b>	80	<b>PF</b>	80						
<b>RATING</b>	40C AMB-CONT								
<b>CC</b>									
<b>DE</b>	6203		<b>ODE</b>	6203					
<b>ENCL</b>	TEFC	<b>SN</b>							
	SFA 6.8-6.4/3.2								

## Parts list

Part number	Description	Quantity
SA009828	SA 34A62-284	1.000 ea
RA006273	RA 34A62-284	1.000 ea
NS2512A01	INSULATOR, CONDUIT BOX X	1.000 ea
34CB3002A	CB CAST W/.88 DIA HOLE	1.000 ea
34GS1029A01	GASKET, CONDUIT BOX	1.000 ea
51XB1016A07	10-16 X 7/16 HXWSSLD SERTYB	2.000 ea
11XW1032G06	10-32 X .38, TAPTITE II, HEX WSHR SLTD U	1.000 ea
34EP3102A01SP	FR ENDPLATE, MACH	1.000 ea
HW5100A03	WAVY WASHER (W1543-017)	1.000 ea
34EP3300A24SP	PU ENDPLATE, MACH	1.000 ea
51XN1032A20	10-32 X 1 1/4 HX WS SL SR	2.000 ea
34FN3002A01SP	EXTERNAL FAN, PLASTIC, .637/.639 HUB W/	1.000 ea
34FH4002A01SP	IEC FH NO GREASER PRIMED	1.000 ea
51XW1032A06	10-32 X .38, TAPTITE II, HEX WSHR SLTD S	3.000 ea
34CB4517	CB LID 4 MTG HOLES .22 DIA STAMPED, FOR	1.000 ea
34GS1031A01	GASKET, FLAT CONDUIT BOX LID (LEXIDE)	1.000 ea
51XW0832A07	8-32 X .44, TAPTITE II, HEX WSHR SLTD SE	4.000 ea
HW2501D13	KEY, 3/16 SQ X 1.375	1.000 ea
HA7000A04	KEY RETAINER 0.625 DIA SHAFTS	1.000 ea
MG1000G27	MED CHARCOAL METALLIC GREY	0.014 ga
10XF0440S02	04-40 X 1/8 TYPE F HEX HD STAINLESS STIC	2.000 ea
HA3100A45	THRUBOLT 10-32 X 8.875	4.000 ea
MN416A01	TAG-INSTAL-MAINT no wire (2500bx)4/22	1.000 ea
LB1417	LABEL CARTON 6X4 PERFORATED BLANK ROLLS	1.000 ea
LC0005E01	CONN.DIA./WARNING LABEL (LC0005/LB1119N)	1.000 ea
NP1256L	ALUM UL CC INDUSTRIAL MOTOR A60	1.000 ea
34PA1005	PKG GRP, PRINT PK1008A06	1.000 ea

**AC Induction Motor Performance Data**

Record # 18005

Typical performance - not guaranteed values

Winding: 34WG0284-R001		Type: 3428M	Enclosure: TEFC	
<b>Nameplate Data</b>			<b>460 V, 60 Hz: High Voltage Connection</b>	
Rated Output (HP)	2	Full Load Torque	3.11 LB-FT	
Volts	208-230/460	Start Configuration	direct on line	
Full Load Amps	6.2-5.8/2.9	Breakdown Torque	12 LB-FT	
R.P.M.	3450	Pull-up Torque	10.6 LB-FT	
Hz	60 Phase	3	Locked-rotor Torque	13.4 LB-FT
NEMA Design Code	B KVA Code	H	Starting Current	20.8 A
Service Factor (S.F.)	1.15	No-load Current	1.35 A	
NEMA Nom. Eff.	80 Power Factor	80	Line-line Res. @ 25°C	7.39 Ω
Rating - Duty	40C AMB-CONT	Temp. Rise @ Rated Load	85°C	
S.F. Amps	6.8-6.4/3.2	Temp. Rise @ S.F. Load	103°C	
		Locked-rotor Power Factor	65	
		Rotor inertia	0.026 LB-FT <sup>2</sup>	

**Load Characteristics 460 V, 60 Hz, 2 HP**

% of Rated Load	25	50	75	100	125	150	S.F.
Power Factor	48	68	80	87	90	91	89
Efficiency	67.7	77.5	80.1	80	78.5	76	79.1
Speed	3547	3502	3447	3389	3324	3247	3350
Line amperes	1.47	1.76	2.21	2.72	3.34	4.07	3.09

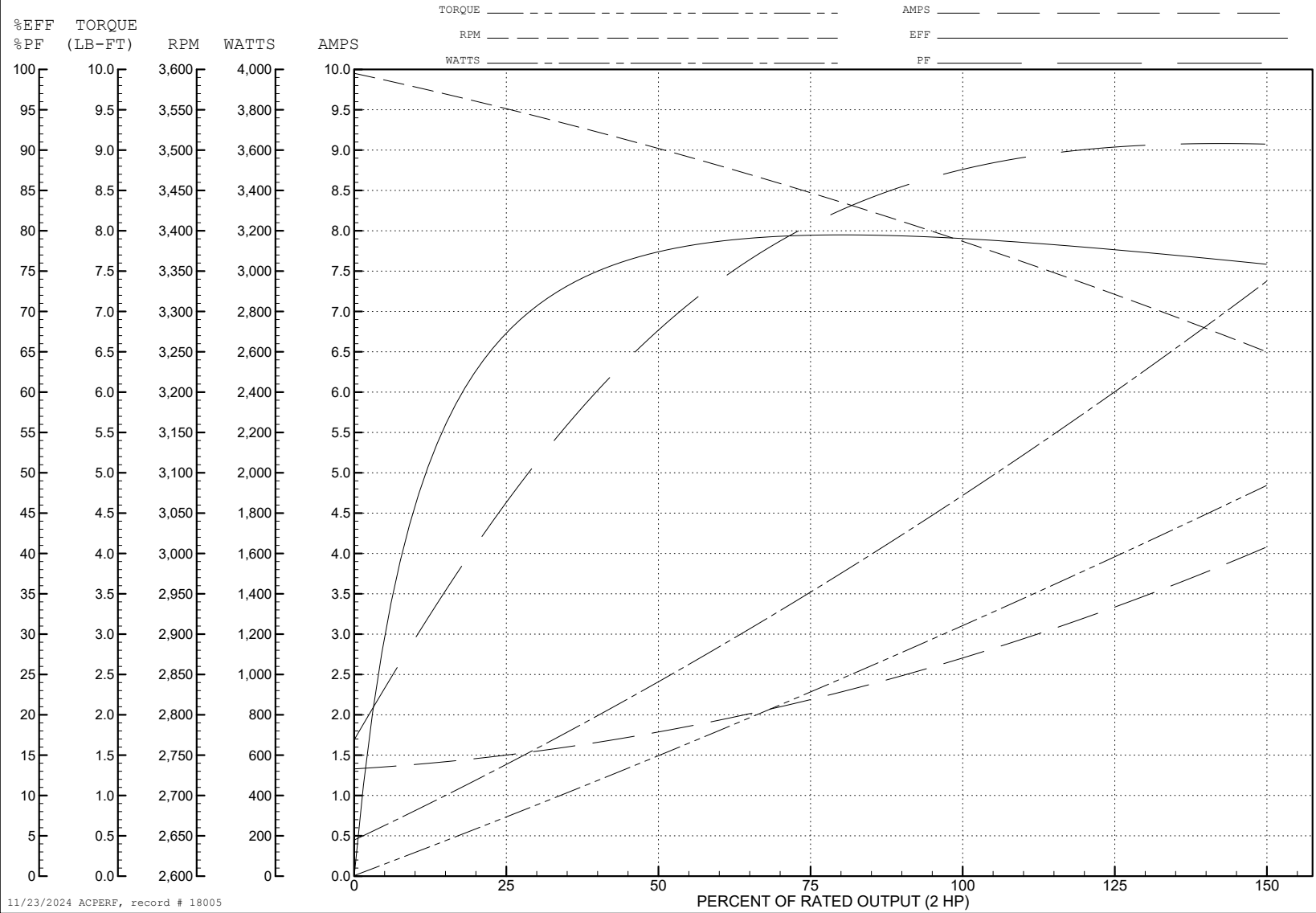
ABB Motors and Mechanical Inc.

WINDING # 34WG0284

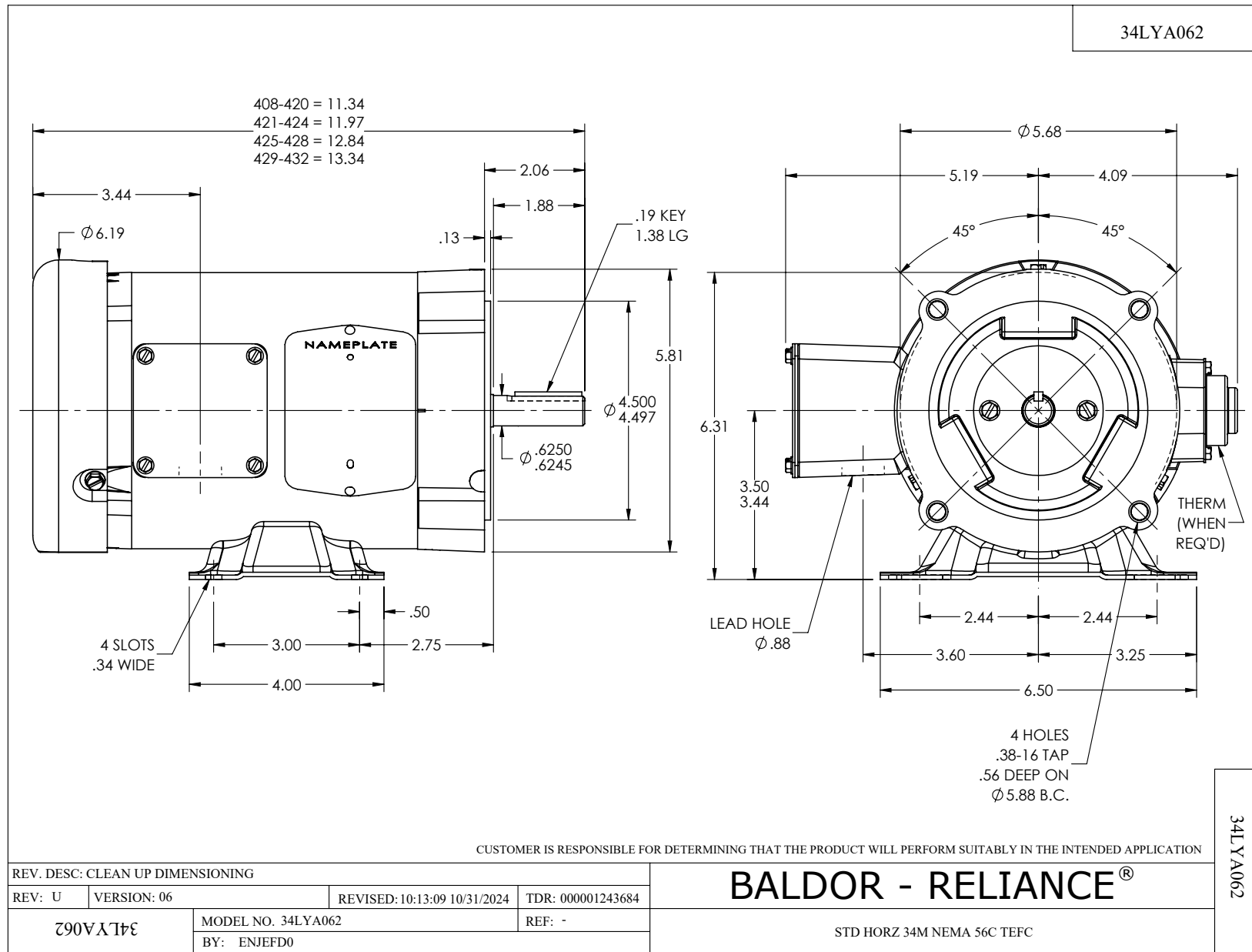
Typical performance - not guaranteed values.

2 HP 3 PH 60 HZ 3450 RPM 460 V 3428M

TORQUES (LB-FT): PO=12 PU=10.6 LR=13.4 LRA=20.8

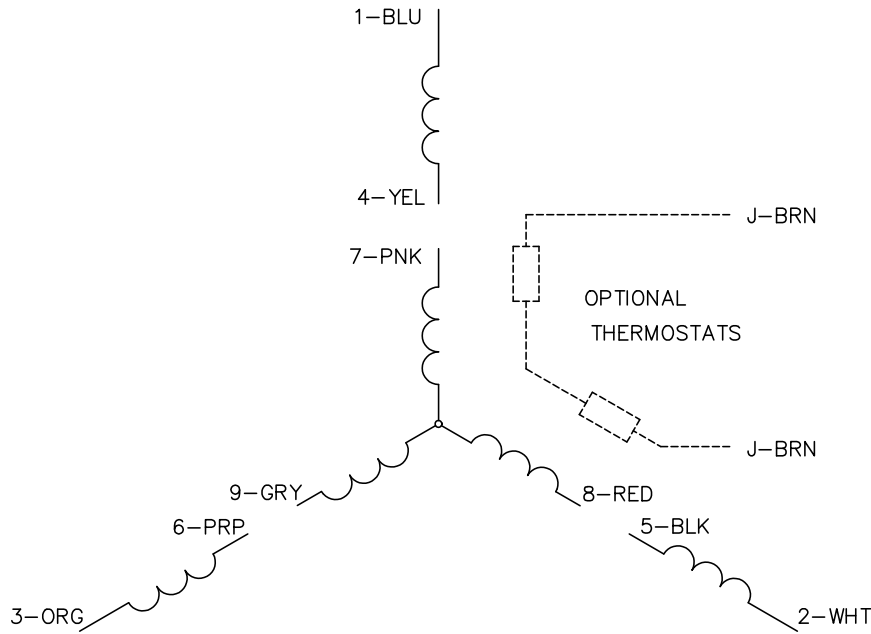


11/23/2024 ACPERF, record # 18005

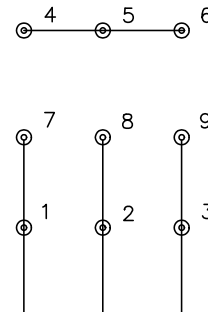




CD0005

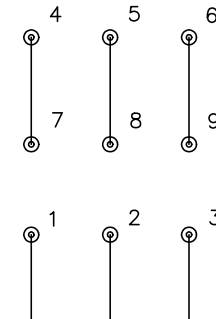


LOW VOLTAGE  
(2Y)



LINE

HIGH VOLTAGE  
(1Y)



LINE

NOTES:

1. INTERCHANGE ANY TWO LINE LEADS TO REVERSE ROTATION.
2. OPTIONAL THERMOSTATS ARE PROVIDED WHEN SPECIFIED.
3. ACTUAL NUMBER OF INTERNAL PARALLEL CIRCUITS MAY BE A MULTIPLE OF THOSE SHOWN ABOVE.
4. LEAD COLORS ARE OPTIONAL. LEADS MUST ALWAYS BE NUMBERED AS SHOWN.

CD0005

REV. DESC: REVISE TO SHOW OPTIONAL COLORS			
REV. LTR: E	BY: JLP	REVISED: 01/19/99 10:15	TDR: 0171435
S00000		FILE: AAA00005140	MDL: -
		MTL: -	

**BALDOR ELECTRIC Co.**

3PH, DV, 9 LEADS