



---

# Customer information packet

## CSSWDM3543-H

.75HP, 1170RPM, 3PH, 60HZ, 56HC, 3530M, TENV, F

Class - None

Division - Not Applicable

## Specifications

Enclosure	TENV
Frame	56HC
Frame Material	Stainless Steel
Frequency	60.00 Hz
Haz Area Class and Group	None
Haz Area Division	Not Applicable
Motor Letter Type	Three Phase
Output @ Frequency	.750 HP @ 60 HZ
Phase	3
Synchronous Speed @ Frequency	1200 RPM @ 60 HZ
Voltage @ Frequency	230.0 V @ 60 HZ 460.0 V @ 60 HZ
Agency Approvals	NEMA PREMIUM NEMA_PREMIUM UR CSA EEV
Ambient Temperature	40 °C
Auxillary Box	No Auxillary Box
Auxillary Box Lead Termination	None
Base Indicator	Rigid
Bearing Grease Type	Polyrex EM (-20F +300F)
Blower	None
Current @ Voltage	1.350 A @ 460.0 V 2.700 A @ 230.0 V
Design Code	B
Drip Cover	No Drip Cover
Duty Rating	CONT
Efficiency @ 100% Load	82.5 %
Electrically Isolated Bearing	Not Electrically Isolated
Feedback Device	NO FEEDBACK
Front Shaft Indicator	None
Heater Indicator	No Heater

## Part detail

Revision	A
Type	AC
Mech. spec.	35E6083
Base	
Status	PRD/A
Elec. spec.	35WGG528
Layout	35LYE6083
Eff. date	06-14-2024
CD Diagram	CD0005
Poles	06
Leads	9#18
Proprietary	False
Created date	02-21-2023

High Voltage Full Load Amps	1.4 a
Insulation Class	F
Inverter Code	Inverter Ready
KVA Code	L
Lifting Lugs	No Lifting Lugs
Locked Bearing Indicator	Locked Bearing
Motor Lead Quantity/Wire Size	9 @ 18 AWG
Motor Lead Termination	Flying Leads
Motor Standards	NEMA
Motor Type	3530M
Mounting Arrangement	F1
Number of Poles	6
Overall Length	12.85 IN
Power Factor	61
Product Family	Wash Down All Stainless Steel
Pulley End Bearing Type	Sealed Bearing
Pulley Face Code	C-Face
Pulley Shaft Indicator	Standard
Rodent Screen	None
Service Factor	1.25
Shaft Diameter	0.625 IN
Shaft Ground Indicator	No Shaft Grounding
Shaft Rotation	Reversible
Shaft Slinger Indicator	No Slinger
Speed	1170 rpm
Speed Code	Single Speed
Starting Method	Direct on line
Thermal Device - Bearing	None
Thermal Device - Winding	None
Vibration Sensor Indicator	No Vibration Sensor
Winding Thermal 1	None
Winding Thermal 2	None

**Nameplate**

<b>NP1953A01</b>									
<b>CAT.NO.</b>	CSSWDM3543-H								
<b>SPEC.</b>	35E6083G528G1								
<b>HP</b>	.75								
<b>VOLTS</b>	230/460								
<b>AMP</b>	2.7/1.35								
<b>RPM</b>	1170								
<b>FRAME</b>	56HC		<b>HZ</b>	60		<b>PH</b>	3		
<b>SER.F.</b>	1.25	<b>CODE</b>	L	<b>DES</b>	B	<b>CLASS</b>	F		
<b>NEMA-NOM-EFF</b>	82.5	<b>PF</b>	61						
<b>RATING</b>	40C AMB-CONT								
<b>CC</b>									
<b>DE</b>	6205	<b>ODE</b>	6203						
<b>ENCL</b>	TENV	<b>SN</b>							
	SFA 3.5/1.75								

## Parts list

Part number	Description	Quantity
SA414859	SA 35E6083G528G1	1.000 ea
RA406628	RA 35E6083G528G1	1.000 ea
NS2512A01	INSULATOR, CONDUIT BOX X	1.000 ea
35CB5001A08	CONDUIT BOX KIT, S/P 9-2 (ALL STAINLESS)	1.000 ea
11XW1032G06	10-32 X .38, TAPTITE II, HEX WSHR SLTD U	1.000 ea
HW3001B01	BRASS CUP WASHER, FOR #10 SCREW	1.000 ea
35EP1913A01	FRONT TENV 203 BRG NO GRSR S/P 9-2 (STAI	1.000 ea
HW4500S33	1/8 NPT STAINLESS #304 SS PLUG	3.000 ea
HW5100A03	WAVY WASHER (W1543-017)	1.000 ea
HW5002A103	RET RING N5002-206 WALDES KOHINOOR	1.000 ea
35EP1935A05	PULLEY 56HC ENCL 205 BRG WD4	1.000 ea
HW4500S33	1/8 NPT STAINLESS #304 SS PLUG	3.000 ea
HW4606A02	JM CLIPPER/SEAL (LWE-0938-1624-AL23)	1.000 ea
HA1049A01	DUBO LOK WASHER SIZE 10 (NYLON LOCK SEAL	4.000 ea
HW2502D13	SS KEY, 3/16 SQ X 1.375	1.000 ea
HA7000A04	KEY RETAINER 0.625 DIA SHAFTS	1.000 ea
MJ5001A02	732 CL SEALANT 3 OZ DIXIE BEARING 289100	0.001 ea
HA5027A02	HA4054 T-DRAIN X2 BAGGED WITH LABEL	1.000 ea
MG1500Y02	WILKOPON PRIMER YELLOW	0.001 ga
MJ1000A02	GREASE, POLYREX EM EXXON	0.050 lb
HA3100S27	THRUBOLT 10-32 X 9.625 SS TDR #23687	4.000 ea
35PA1066	PKG GRP, PRINT PK1008A06	1.000 ea
MN416A01	TAG-INSTAL-MAINT no wire (2500bx)4/22	1.000 ea
FE-0000007	ZRTG FE ASSEMBLY	1.000 ea
PE-0000012	ZRTG PE ASSEMBLY	1.000 ea

**AC Induction Motor Performance Data**

Record # 47056

Typical performance - not guaranteed values

Winding: 35WGQ175-R024		Type: 3524M	Enclosure: TENV			
<b>Nameplate Data</b>			<b>460 V, 60 Hz: High Voltage Connection</b>			
Rated Output (HP)	.75	Full Load Torque	3.37 LB-FT			
Volts	230/460	Start Configuration	direct on line			
Full Load Amps	2.8/1.4	Breakdown Torque	10.4 LB-FT			
R.P.M.	1150	Pull-up Torque	7.82 LB-FT			
Hz	60 Phase	3	Locked-rotor Torque	8.56 LB-FT		
NEMA Design Code	B	KVA Code	J	Starting Current	7.44 A	
Service Factor (S.F.)	1.25	No-load Current	0.881 A			
NEMA Nom. Eff.	82.5	Power Factor	63	Line-line Res. @ 25°C	22 Ω	
Rating - Duty	40C	AMB-CONT	Temp. Rise @ Rated Load			26°C
S.F. Amps	3/1.5	Temp. Rise @ S.F. Load	34°C			
		Locked-rotor Power Factor	44.3			
		Rotor inertia	0.142 LB-FT <sup>2</sup>			

**Load Characteristics 460 V, 60 Hz, 0.75 HP**

% of Rated Load	25	50	75	100	125	150	S.F.
Power Factor	27	44	55	63	67	71	70
Efficiency	68.9	79.2	82.1	82.7	82.1	80.6	82.4
Speed	1191	1181	1171	1160	1147	1135	1150
Line amperes	0.957	1.03	1.18	1.34	1.56	1.79	1.52

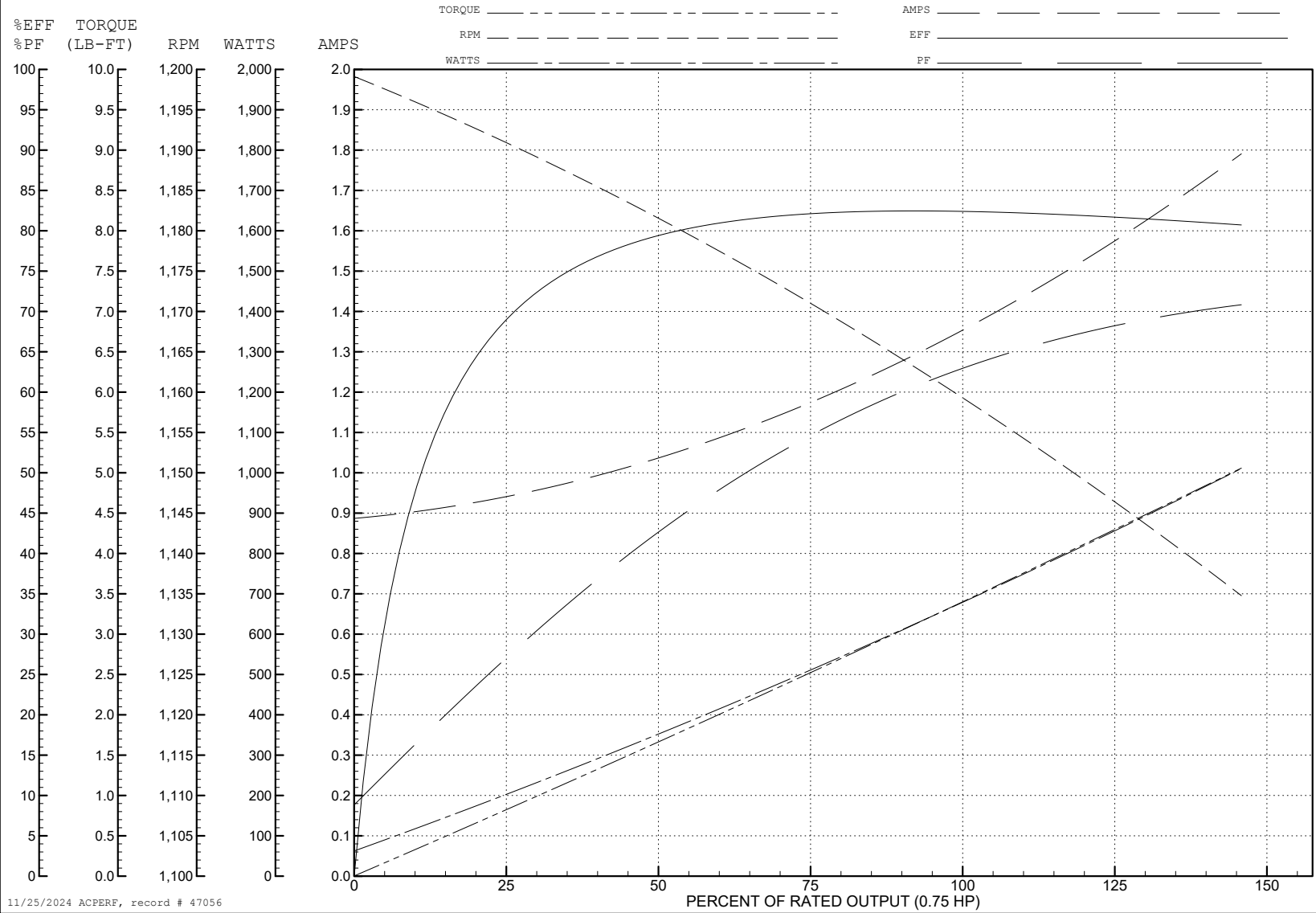
ABB Motors and Mechanical Inc.

WINDING # 35WGQ175

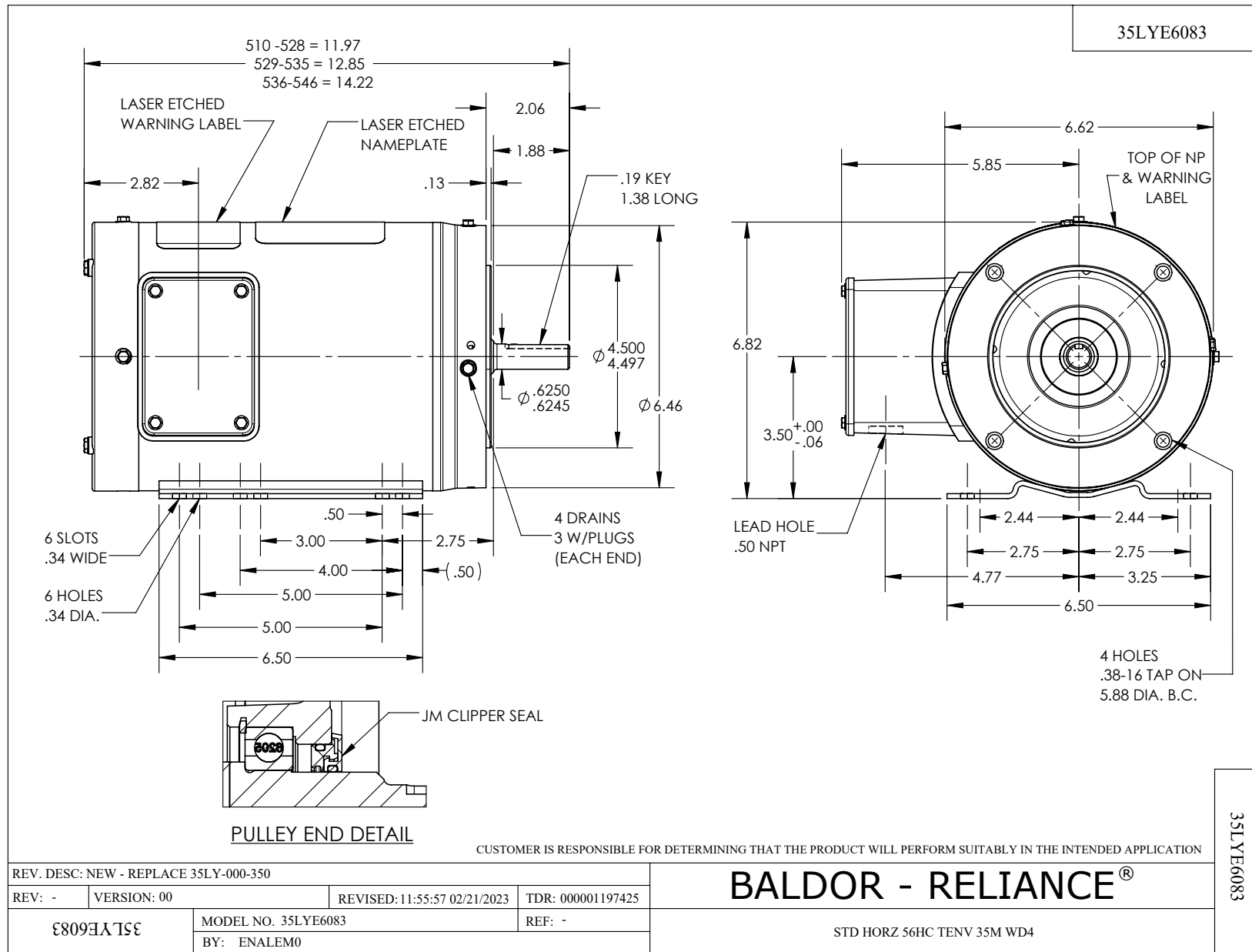
0.75 HP 3 PH 60 HZ 1150 RPM 460 V 3524M

Typical performance - not guaranteed values.

TORQUES (LB-FT): PO=10.4 PU=7.82 LR=8.56 LRA=7.44



11/25/2024 ACPERF, record # 47056





CD0005



LOW VOLTAGE (2Y)



LINE

HIGH VOLTAGE (1Y)



LINE

NOTES:

1. INTERCHANGE ANY TWO LINE LEADS TO REVERSE ROTATION.
2. OPTIONAL THERMOSTATS ARE PROVIDED WHEN SPECIFIED.
3. ACTUAL NUMBER OF INTERNAL PARALLEL CIRCUITS MAY BE A MULTIPLE OF THOSE SHOWN ABOVE.
4. LEAD COLORS ARE OPTIONAL. LEADS MUST ALWAYS BE NUMBERED AS SHOWN.

CD0005

REV. DESC: REVISE TO SHOW OPTIONAL COLORS			
REV. LTR: E	BY: JLP	REVISED: 01/19/99 10:15	TDR: 0171435
S00000		FILE: AAA00005140	MDL: -
		MTL: -	

**BALDOR ELECTRIC Co.**

3PH, DV, 9 LEADS