

BALDOR • RELIANCE

Customer information packet

D1154

1HP, 1750RPM, DC, 56, 3535D, TEFC, F1

Class - None

Division -

Specifications

| | |
|-------------------------------|---------------------------|
| Armature Voltage | 115 V |
| Base Speed | 1750 rpm |
| Enclosure | TEFC |
| Field Voltage | 115 V |
| Frame | 56 |
| Frame Material | Steel |
| Haz Area Class and Group | None |
| Output Power | 1.000 HP |
| Agency Approvals | CSA UR |
| Ambient Temperature | 40 °C |
| Armature Current | 8.0 a |
| Armature Inertia | 13.657 lb-ft ² |
| Base Indicator | Rigid |
| Bearing Grease Type | Polyrex EM (-20F +300F) |
| Drip Cover | No Drip Cover |
| Duty Rating | CONT |
| Feedback Device | NO FEEDBACK |
| Field Winding Type | COMPOUND |
| Heater Indicator | No Heater |
| Lifting Lugs | No Lifting Lugs |
| Motor Lead Exit | Ko Box |
| Motor Lead Quantity/Wire Size | 2 @ 18 AWG, F |
| Motor Lead Termination | Flying Leads |
| Motor Standards | NEMA |
| Mounting Arrangement | F1 |
| Overall Length | 15.44 IN |
| Product Family | General Purpose |
| Pulley End Bearing Type | Sealed Bearing |
| RoHS Status | ROHS COMPLIANT |
| Service Factor | 1.00 |
| Shaft Diameter | 0.625 IN |

Part detail

| | |
|--------------|-----------------------------|
| Revision | V |
| Type | DC |
| Mech. spec. | 35P328 |
| Base | |
| Status | PRD/A |
| Elec. spec. | 35WGZ396 |
| Layout | 35LYP328 |
| Eff. date | 10-28-2024 |
| CD Diagram | CD0862B01 |
| Poles | 00 |
| Leads | 2#18 F,2#14 S,2#14 A,2#14 Y |
| Proprietary | False |
| Created date | 01-01-0001 |

| | |
|---------------------------------|---------------------------|
| Shaft Extension Location | Pulley End |
| Shaft Ground Indicator | No Shaft Grounding |
| Shaft Rotation | Reversible |
| Shaft Slinger Indicator | Shaft Slinger |

Nameplate

| NP0111L | | | |
|-----------------|-------------|----------------|-------|
| CAT.NO. | D1154 | | |
| SPEC. | 35P328Z396 | | |
| HP | 1 | ENCL | TEFC |
| RPM | 1750 | | |
| FRAME | 56 | TYPE | 3535D |
| ARM V | 115 | ARM A | 8 |
| FLD V | 115 | FLD A | .5 |
| INSUL | F | AMB. | 40 |
| DUTY | CONT | SUPPLY | A |
| BRG/DE | 6205 | BRG/ODE | 6203 |
| BRUSHES | 2/BP5000T07 | | |
| | -- | BLANK | |
| SER. | | | |
| BLANK | IEEE 45 | | |
| APRV-CSA | | APRV-UL | |

Parts list

| Part number | Description | Quantity |
|---------------|--|----------|
| SA046565 | SA 35P328Z396 | 1.000 ea |
| AA005342 | AA 35P328Z396 | 1.000 ea |
| MH2001A01B19 | GLASTIC SHEET .093 X 1.188 X | 0.126 lb |
| BP5000T07SP | CARBON BRUSH - SCHUNK GRADE 3971 | 1.000 ea |
| 11XW1032G06 | 10-32 X .38, TAPTITE II, HEX WSHR SLTD U | 1.000 ea |
| HW3001B02 | BRASS CUP WASHER W/GROUND SYMBOL TAB, | 1.000 ea |
| 35EP1119A06 | FR ENDPLATE, MACH | 1.000 ea |
| HW5100A03 | WAVY WASHER (W1543-017) | 1.000 ea |
| 35EP1102A23 | PU ENDPLATE, MACH | 1.000 ea |
| 51XN1032A20 | 10-32 X 1 1/4 HX WS SL SR | 2.000 ea |
| 80XN1032J03 | 10-32 X 3/16 SET SCREW, HEX SOC, CUP PT | 2.000 ea |
| BP5201A14SP | BRUSH HOLDER ASSY | 1.000 ea |
| MJ5001A27 | 32220KN GRAY SEALER *MIN BUY 4 QTS=1GAL | 0.001 qt |
| MJ5004A05 | #242-21 LOCTITE GENERAL PURPOSE MED. STR | 0.001 ea |
| MG1050G01 | CELEROL MEDIUM CHARCOAL METALLIC GRAY | 0.017 ga |
| 35FN3002A05SP | EXFN, PLASTIC, 6.376 OD, .638 ID | 1.000 ea |
| 51XB1214A16 | 12-14X1.00 HXWSSLD SERTYB | 1.000 ea |
| 35FH4005A04 | IEC FH NO GRSR W/1.09 SHAFT HOLE, W/ | 1.000 ea |
| 51XW1032A06 | 10-32 X .38, TAPTITE II, HEX WSHR SLTD S | 3.000 ea |
| WD4100A109 | PLUG STIMPSON D3550 | 1.000 ea |
| 35CB4504 | COND. BOX LID 35 DC & PM FRAMES, STAMPED | 1.000 ea |
| 35GS1008 | GASKET, CONDUIT BOX LID -- 1/16 LEXIDE # | 1.000 ea |
| 51XW0832A07 | 8-32 X .44, TAPTITE II, HEX WSHR SLTD SE | 2.000 ea |
| HA1005A03SP | SLINGER, OD 1.750, ID .938, 205 BRG | 1.000 ea |
| HW2501D13 | KEY, 3/16 SQ X 1.375 | 1.000 ea |
| HA7000A04 | KEY RETAINER 0.625 DIA SHAFTS | 1.000 ea |
| MJ5001A27 | 32220KN GRAY SEALER *MIN BUY 4 QTS=1GAL | 0.001 qt |
| 85XU0407S04 | 4X1/4 U DRIVE PIN STAINLESS | 2.000 ea |
| WD4102A07 | STRAIN RELIEF - MICRO PLASTIC #23MP07W20 | 1.000 ea |
| HA3100A34 | THRUBOLT 10-32 X 11.250 | 4.000 ea |
| MN416A01 | TAG-INSTAL-MAINT no wire (2500bx)4/22 | 1.000 ea |

| | | |
|----------|--|----------|
| LB1624 | COMBINED WARNING LABEL, ISO/ANSI PICTOGR | 1.000 ea |
| NP0111L | NP STD LASER ENGRAVED DC MOTORS, UL CSA | 1.000 ea |
| 35PA1007 | PKG GRP, PRINT PK1034A06 | 1.000 ea |
| LC0862 | DC -- COMPOUND WOUND MOTOR CONNECTION LA | 1.000 ea |

DC Motor Performance Data

Record # 284

Typical performance - not guaranteed values

| Winding: 35WGZ396-R001 | | Type: 3535D | Enclosure: TEFC |
|------------------------|--------------|---------------------------------------|-----------------------|
| Nameplate Data | | General Characteristics | |
| Rated Output (HP) | 1 | Armature Resistance @ 25°C | 0.794 Ω |
| R.P.M. | 1750 | Commutating Winding Resistance @ 25°C | 0.588 Ω |
| Armature Volts | 115 | Series Winding Resistance @ 25°C | 1.836 Ω |
| Armature Amps | 8 | Shunt Winding Resistance @ 25°C | 217 Ω |
| Field Volts | 115 | Armature Inductance | 14.193 mH |
| Field Amps | 0.5 | Armature Inertia | 13.68 LI ² |
| Rating - Duty | 40C AMB-CONT | | |
| Power Supply Code | K | | |
| | | Temp. Rise @ Rated Load | 88°C |

Load Characteristics at 115 Armature Volts, 115 Field Volts, 0.52 Field Amps

| Load Point | 1 | 2 | 3 | 4 | 5 | 6 | 7 |
|------------------|------|------|------|------|------|------|------|
| Armature Amps | 1.1 | 2.8 | 4.3 | 6.2 | 7.8 | 9.5 | 11.3 |
| R.P.M. | 1858 | 1797 | 1736 | 1682 | 1644 | 1596 | 1554 |
| Torque (LB-FT) | 0 | 0.75 | 1.5 | 2.25 | 3 | 3.75 | 4.5 |

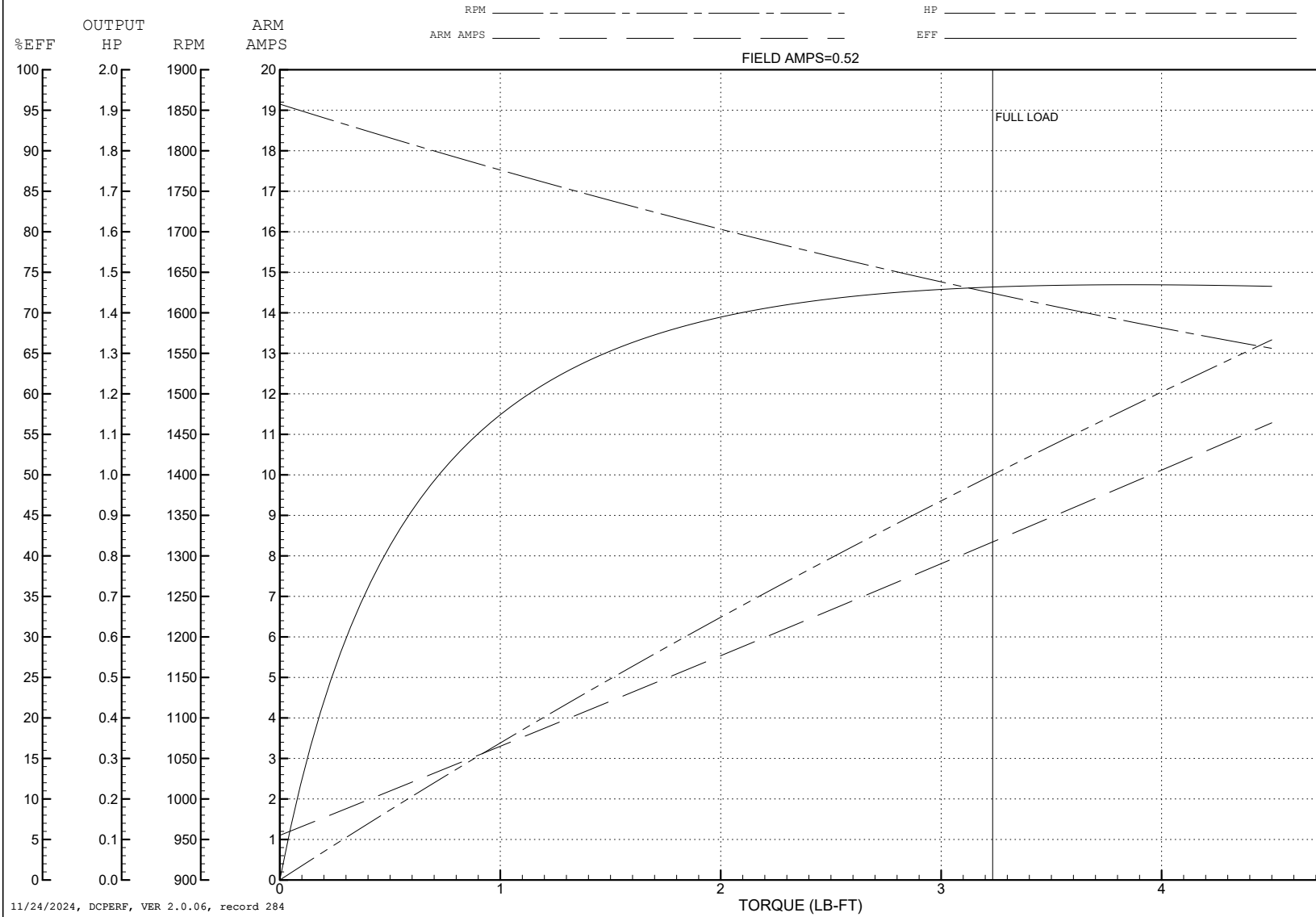
ABB Motors and Mechanical Inc.

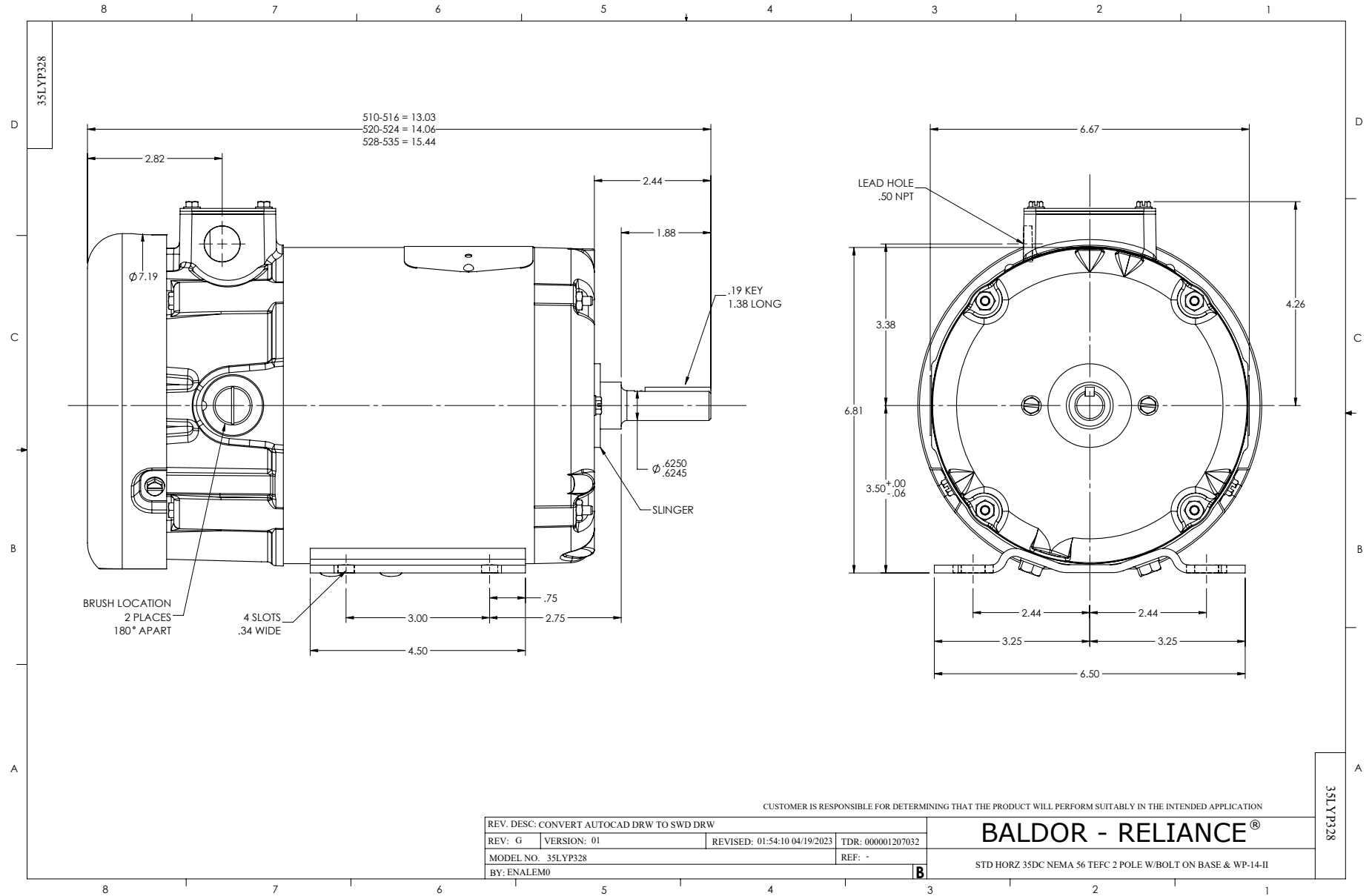
WINDING # 35WGZ396

Typical performance - not guaranteed values.

1 HP DC 1750 RPM 115 V ARM 115 V FLD 3535D

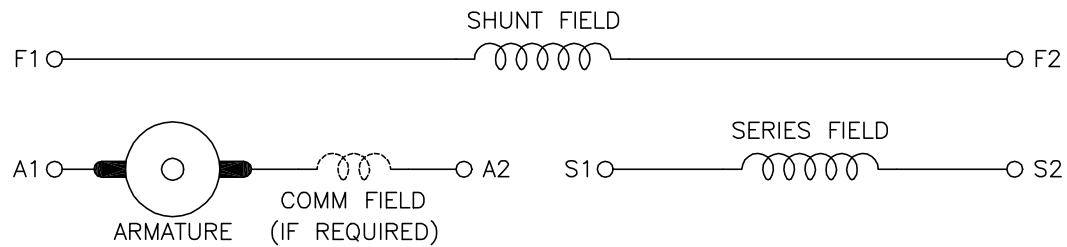
ENCL: TEFC DUTY: CONT CL: F





CD0862B01

COMPOUND WOUND



| DIRECTION OF ROTATION | | | |
|-----------------------|--------------|-----------------|--------------|
| CWDE | | CCWDE | |
| POS TERM (+) | NEG TERM (-) | POS TERM (+) | NEG TERM (-) |
| A1 | S2 | A2 | S2 |
| F1 | F2 | F1 | F2 |
| CONNECT A2 & S1 | | CONNECT A1 & S1 | |

NOTES:

1. LIMIT STARTING INRUSH CURRENT TO NOT MORE THAN 3 TIMES RATED AMPERES BY ENERGIZING THE FULL SHUNT FIELD BEFORE BRINGING THE ARMATURE VOLTAGE UP SLOWLY OR IN STEPS.
2. OPTIONAL FIELD REOSTAT MAY BE CONNECTED IN SERIES WITH THE SHUNT FIELD.
3. OPTIONAL THERMOSTAT LEADS ARE MARKED J,J.

| | | | |
|--------------------------------|---------|------------------------------|----------------|
| REV. DESC: NEW, REPLACE CD0862 | | | |
| REV. LTR: - | BY: JLP | REVISED: 16:10:51 11/03/2004 | TDR: 347796 |
| CD0862B01 | | FILE: AAA00121482 | REF: CD0862B01 |
| | | MTL: - | |

BALDOR ELECTRIC Co.

DC CONNECTION DIAGRAM, COMPOUND FIELD, 6 LEAD

CD0862B01