



Customer information packet

ECP83764T-5

3HP, 1165RPM, 3PH, 60HZ, 213T, 0736M, TEFC, F1

Class - CLI GP A,B,C,D

Division - Division II

Specifications

Enclosure	TEFC
Frame	213T
Frame Material	Iron
Frequency	60.00 Hz
Haz Area Class and Group	CLI GP A,B,C,D
Haz Area Division	Division II
Motor Letter Type	Three Phase
Output @ Frequency	3.000 HP @ 60 HZ
Phase	3
Synchronous Speed @ Frequency	1200 RPM @ 60 HZ
Voltage @ Frequency	575.0 V @ 60 HZ
Agency Approvals	CSA EEV NEMA PREMIUM NEMA_PREMIUM UR CCSA US
Ambient Temperature	40 °C
Auxillary Box	No Auxillary Box
Auxillary Box Lead Termination	None
Base Indicator	Rigid
Bearing Grease Type	Polyrex EM (-20F +300F)
Blower	None
Constant Torque Speed Range	1.8
Current @ Voltage	3.600 A @ 575.0 V
Design Code	B
Drip Cover	No Drip Cover
Duty Rating	CONT
Efficiency @ 100% Load	89.5 %
Electrically Isolated Bearing	Not Electrically Isolated
Feedback Device	NO FEEDBACK
Front Face Code	Standard
Front Shaft Indicator	None

Part detail

Revision	Z
Type	AC
Mech. spec.	07J415
Base	
Status	PRD/A
Elec. spec.	07WGY746
Layout	07LYJ415
Eff. date	09-01-2022
CD Diagram	CD0006
Poles	06
Leads	3#14
Proprietary	False
Created date	03-26-2010

Haz Area Temp Code	T3C
Heater Indicator	No Heater
High Voltage Full Load Amps	3.6 a
Insulation Class	F
Inverter Code	Inverter Duty
IP Rating	NONE
KVA Code	K
Lifting Lugs	Standard Lifting Lugs
Locked Bearing Indicator	Locked Bearing
Max Speed	1800 rpm
Motor Lead Exit	Ko Box
Motor Lead Quantity/Wire Size	3 @ 14 AWG
Motor Lead Termination	Flying Leads
Motor Standards	NEMA
Motor Type	0736M
Mounting Arrangement	F1
Number of Poles	6
Overall Length	19.50 IN
Power Factor	70
Product Family	Chem Process S/P 32-8 IEEE 841
Pulley End Bearing Type	Ball
Pulley Face Code	Standard
Pulley Shaft Indicator	Standard
Rodent Screen	None
Service Factor	1.15
Shaft Diameter	1.375 IN
Shaft Extension Location	Pulley End
Shaft Ground Indicator	No Shaft Grounding
Shaft Rotation	Reversible
Shaft Slinger Indicator	No Slinger
Speed	1165 rpm
Speed Code	Single Speed
Starting Method	Direct on line
Thermal Device - Bearing	None

Thermal Device - Winding	None
Vibration Sensor Indicator	No Vibration Sensor
Winding Thermal 1	None
Winding Thermal 2	None

Nameplate

NP4328

CAT.NO.	ECP83764T-5					
SPEC.	07J415Y746G1					
HP	3 TE		IP	56		
VOLTS	575					
AMPS	3.6					
R.P.M.	1165					
FRAME	213T		HZ	60	PH	3
SER.F.	1.15	CODE	K	DES.	B	CLASS F
RATING	40C AMB-CONT					
SN						
DE	6307		ODE	6206		
NEMA NOM. EFF.	89.5		P.F.	70		
GUAR. MIN. EFF.	87.5	CC	010A			
T. CODE	T3C		TEMP=	160		

NP3186

SPEC.	07J415Y746G1		
ABMA DE BRG	35BC03XP30X		
ABMA ODE BRG	30BC02XP30X		
GREASE	POLYREX EM		
MOTOR WEIGHT	211	ROTOR BARS	27
		STATOR BARS	36
MAX. R.P.M.	1800	MAX. KVAR	1.3
INV.TYPE	PWM		
T=	160		
CHP	60	TO	90
CT	1.8	TO	60
VT	-0	TO	60
HTR-VOLTS	N/A	HTR-AMPS	N/A
HTR-WATTS		MAX. SPACE HEATER TEMP.	N/A

Parts list

Part number	Description	Quantity
SA194747	SA 07J415Y746G1	1.000 ea
RA182330	RA 07J415Y746G1	1.000 ea
37FN3002C01	EXFN, PLASTIC, 6.00 OD, 1.155 ID	1.000 ea
HW3201A05	3/8-16 EYEBOLT	1.000 ea
09CB1002A05G	CONDUIT BOX, 1.00 N.P.T. (GRAY)	1.000 ea
RM1017	LEAD SEPERATOR GASKET MODEL 307 1/8" THK	1.000 ea
19XW2520A16	SCREW,1/4-20X1 TAPTITE-II OR ROLOC 91	2.000 ea
11XW1032G06	10-32 X .38, TAPTITE II, HEX WSHR SLTD U	1.000 ea
HW3001B01	BRASS CUP WASHER, FOR #10 SCREW	1.000 ea
10XN2520S06	1/4 20X3/8 HX HD CAP S.S.	1.000 ea
WD1000B16	T&B CX70TN OR L70P TERMINAL LUG	1.000 ea
37EP1100B56G	206 BRG,C.I.FH,GRSR,RLF,DRAIN FITTING,IN	1.000 ea
HW4601B26	INPRO SEAL, 206 BRG, MINI66	1.000 ea
HW4500A32	FIT./EXT 1698-B (ALEMITE)GREASE FITTING	1.000 ea
HA4051A00	PLASTIC CAP FOR GREASE FITTING	1.000 ea
HW4500A17	317400 ALEMITE GREASE RELIEF	1.000 ea
HA4002A03	#304 S.S. DRAIN FITTING, .125 NPT (.44 H	1.000 ea
HW5100A06	W2420-025 WVY WSHR (WB)	1.000 ea
37EP1101A90G	307 BRG,BRG RET,GRSR,RLF,DRAIN FITTING,I	1.000 ea
HW4601B25	INPRO SEAL, 307 BRG, MINI66	1.000 ea
HW4500A01	1641B(ALEMITE)400 UNIV, GREASE FITT	1.000 ea
HA4051A00	PLASTIC CAP FOR GREASE FITTING	1.000 ea
HW4500A17	317400 ALEMITE GREASE RELIEF	1.000 ea
HA4002A03	#304 S.S. DRAIN FITTING, .125 NPT (.44 H	1.000 ea
10XN2520A28	1/4-20X 1 3/4 HEX HD	4.000 ea
HA3104A32	THRUBOLT- 5/16-18 X12.750	4.000 ea
XY3118A12	5/16-18 HEX NUT DIRECTIONAL SERRATION	4.000 ea
07FH1001A01G	SPL FAN HOUSING, 307, W/GREASER, GRAY EP	1.000 ea
10XN2520A28	1/4-20X 1 3/4 HEX HD	3.000 ea
WD4100A02	DP-1000 HEYCO PLUG OR 62MP1000 MICRO PL	1.000 ea
12CB1503G	CONDUIT BOX CAST. (GRAY)	1.000 ea

09GS1013A01	09 GS FOR 09CB3501 LID - BLACK NEOPRENE	1.000 ea
10XN2520A24	1/4-20X 1 1/2 HEX HD X	2.000 ea
HW2501F21	KEY, 5/16 SQ X 2.375	1.000 ea
HA7000A02	KEY RETAINER RING, 1 1/8 DIA, 1 3/8 DIA	1.000 ea
MJ5001A27	32220KN GRAY SEALER *MIN BUY 4 QTS=1GAL	0.001 qt
MJ1000A73	INPRO P-80 ASSEMBLY LUB./ 1 QT. CONTAIN	0.001 qt
85XU0407S04	4X1/4 U DRIVE PIN STAINLESS	4.000 ea
LB1624	COMBINED WARNING LABEL, ISO/ANSI PICTOGR	1.000 ea
LT0019A00	MOTOR NO-LOAD PERFORMANCE DATA SHEET	1.000 ea
WD1000D21	TRM,T&B #B71M,RING,18-14,.25,NON-INSL	3.000 ea
MJ1000A02	GREASE, POLYREX EM EXXON	0.050 lb
51XB1214A20	12-14X1.25 HWSSLD SERTYB	1.000 ea
MG1025N19	WILKOFAS, 778.50, RELIANCE BLUE-GREEN 8	0.036 ga
LC0006	CONNECTION LABEL	1.000 ea
LB1449	DIV-2/NEC WARNING LABEL	1.000 ea
NP4328	SS IEEE841-2021 DIV-2 UL CSA-C US EEV	1.000 ea
NP3186	SS IEEE841 INV AUX DATA INFORMATION	1.000 ea
07PA1011	PKG GRP, 07 CAST IRON PK1181	1.000 ea
MN416A01	TAG-INSTAL-MAINT no wire (2500bx)4/22	1.000 ea

AC Induction Motor Performance Data

Record # 92788

Typical performance - not guaranteed values

Winding: 07WGY746-R005		Type: 0736M	Enclosure: TEFC	
Nameplate Data			575 V, 60 Hz: Single Voltage Motor	
Rated Output (HP)	3	Full Load Torque	13.5 LB-FT	
Volts	575	Start Configuration	direct on line	
Full Load Amps	3.6	Breakdown Torque	50.2 LB-FT	
R.P.M.	1165	Pull-up Torque	23.7 LB-FT	
Hz	60 Phase	Locked-rotor Torque	30.9 LB-FT	
NEMA Design Code	B KVA Code	Starting Current	25.6 A	
Service Factor (S.F.)	1.15	No-load Current	1.98 A	
NEMA Nom. Eff.	89.5 Power Factor	Line-line Res. @ 25°C	4.15 Ω	
Rating - Duty	40C AMB-CONT	Temp. Rise @ Rated Load	30°C	
S.F. Amps		Temp. Rise @ S.F. Load	36°C	
		Locked-rotor Power Factor	22.9	
		Rotor inertia	0.895 lb-ft ²	

Load Characteristics 575 V, 60 Hz, 3 HP

% of Rated Load	25	50	75	100	125	150	S.F.
Power Factor	33	52	63	70	73	75	72
Efficiency	81.8	88.2	89.3	89.5	88.8	87.7	89.2
Speed	1193	1186	1179	1171	1160	1149	1164
Line amperes	2.12	2.51	3.02	3.61	4.31	5.11	4.03

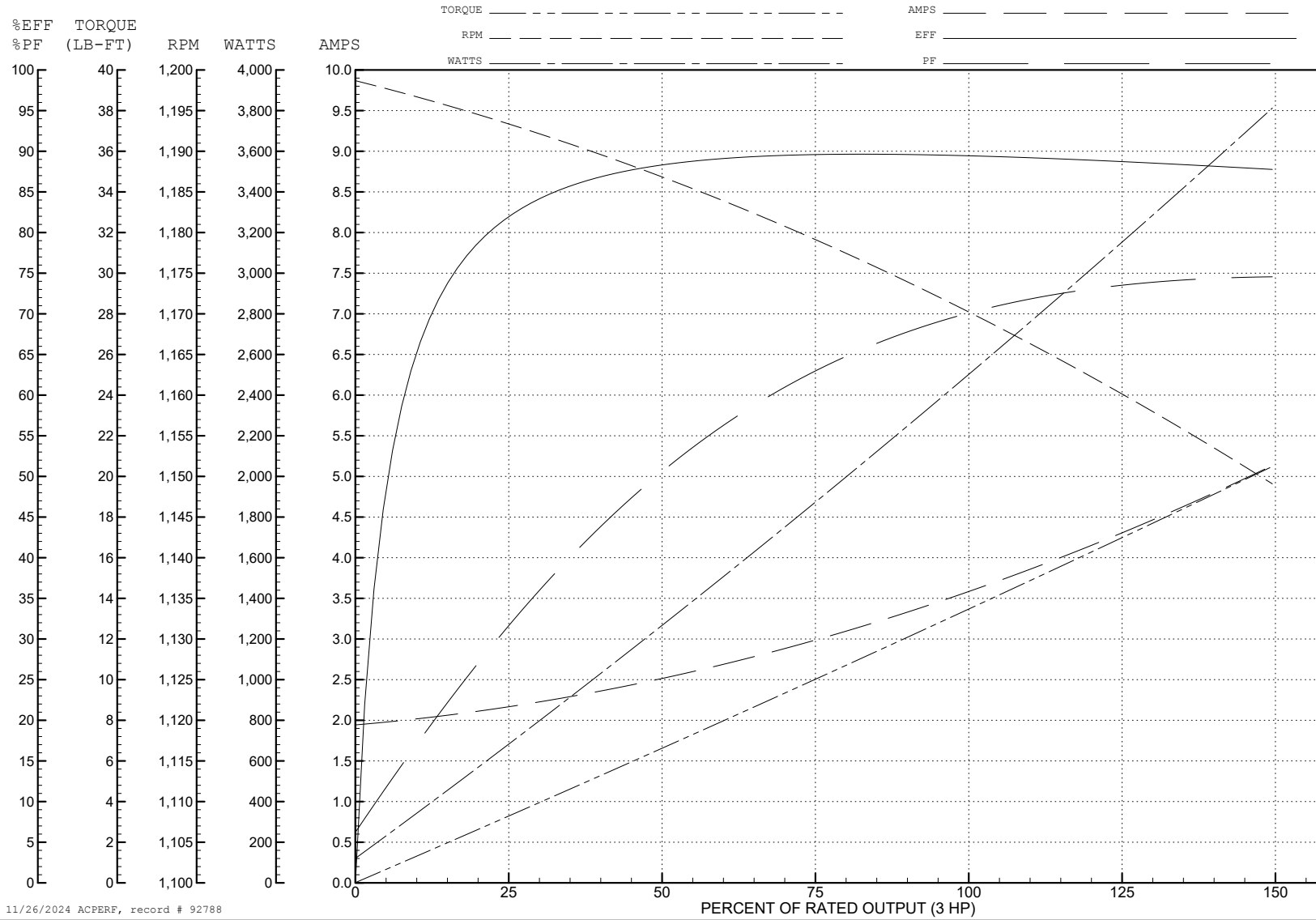
ABB Motors and Mechanical Inc.

WINDING # 07WGY746

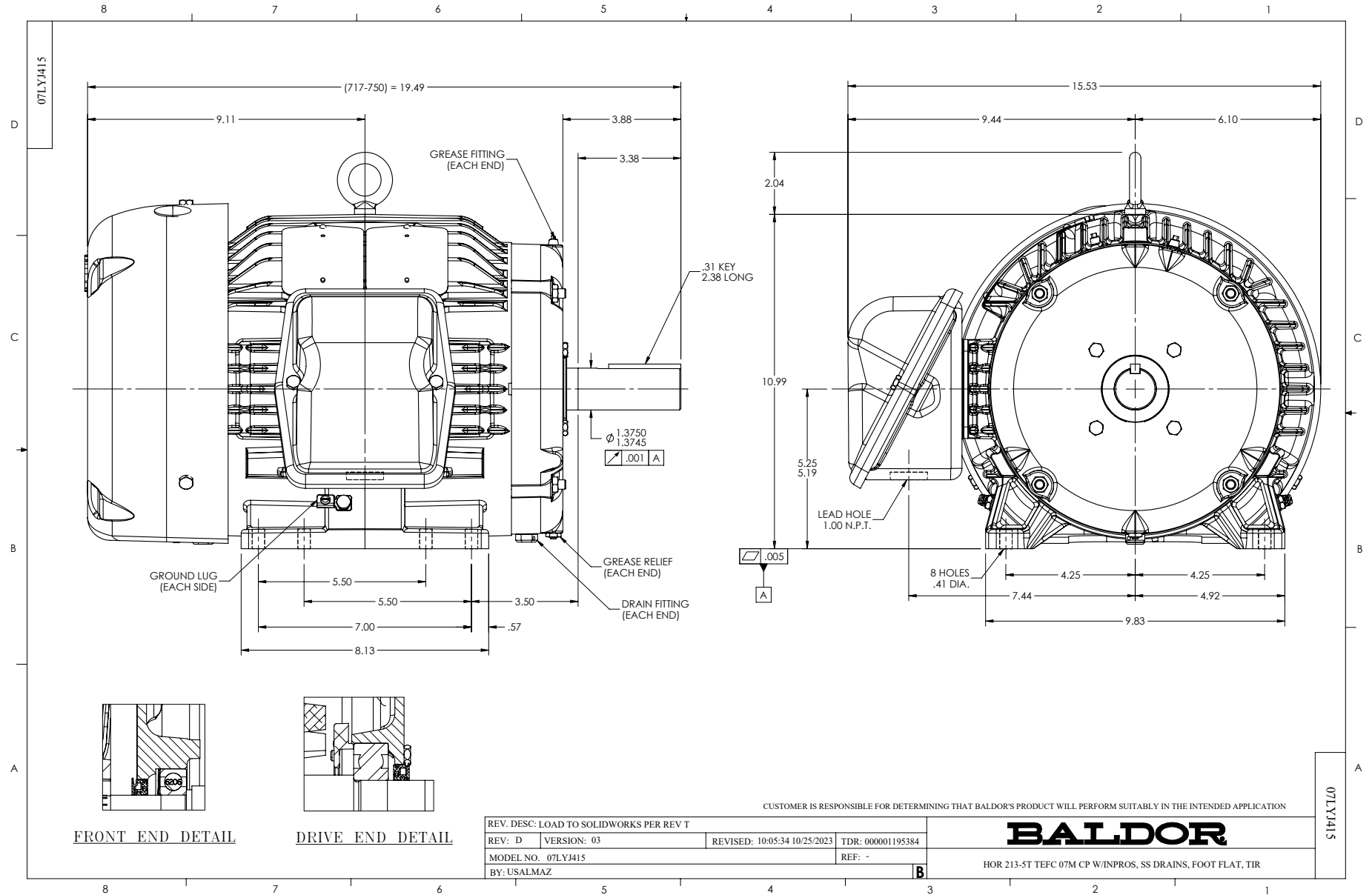
3 HP 3 PH 60 HZ 1165 RPM 575 V 0736M

Typical performance - not guaranteed values.

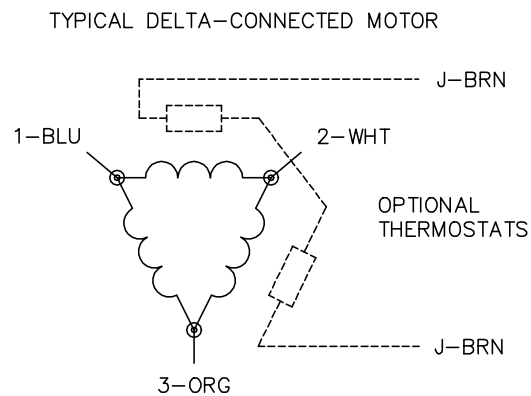
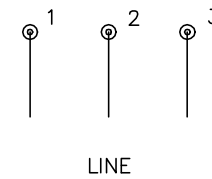
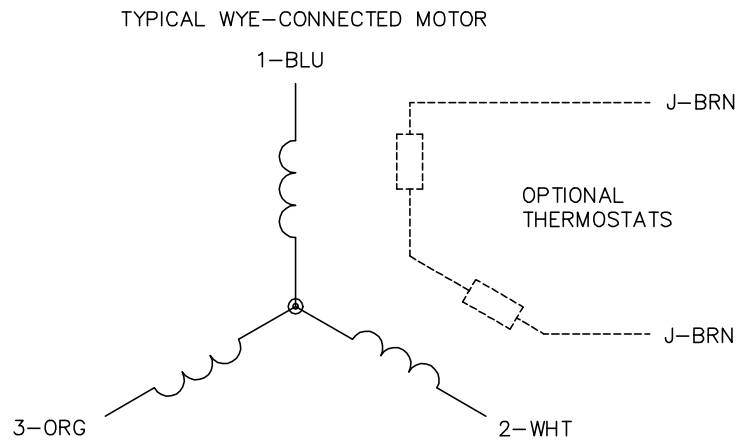
TORQUES (LB-FT): PO=50.2 PU=23.7 LR=30.9 LRA=25.6



11/26/2024 ACPERF, record # 92788



CD0006



NOTES:

1. THREE LEAD MOTOR MAY BE EITHER WYE CONNECTED OR DELTA CONNECTED.
2. INTERCHANGE ANY TWO LINE LEADS TO REVERSE ROTATION.
3. OPTIONAL THERMOSTATS ARE PROVIDED WHEN SPECIFIED.
4. ACTUAL NUMBER OF INTERNAL PARALLEL CIRCUITS MAY VARY.
5. LEAD COLORS ARE OPTIONAL. LEADS MUST BE NUMBERED AS SHOWN.

CD0006

REV. DESC: ADD CLASS CONN00000007		
REV. LTR: E	VERSION: 01	TDR: 000001099922
FILE: \AAA\00005\141	REVISED: 10:24:49 02/19/2019	BY: ENBRIRO
MTL: -	© □	

BALDOR - RELIANCE®

3PH, SV, 3 LEADS, WYE OR DELTA CONNECTED

SH 1 of 1