

**BALDOR • RELIANCE**

---

# Customer information packet

## ECS101M0H5DF4

5HP, 1800RPM, 3PH, 60HZ, 145T, 3548B, TEFC, F1

Class - None

Division - Not Applicable

## Specifications

Enclosure	TEFC
Frame	145T
Frame Material	Steel
Frequency	60.00 Hz
Haz Area Class and Group	None
Haz Area Division	Not Applicable
Motor Letter Type	Brushless Wound Field PM Rotor
Output @ Frequency	5.000 HP @ 60 HZ
Phase	3
Synchronous Speed @ Frequency	1800 RPM @ 60 HZ
Voltage @ Frequency	230.0 V @ 60 HZ 460.0 V @ 60 HZ
Agency Approvals	WEEE CULUS
Ambient Temperature	40 °C
Auxillary Box	No Auxillary Box
Auxillary Box Lead Termination	None
Base Indicator	Rigid
Bearing Grease Type	Polyrex EM (-20F +300F)
Blower	None
Constant Torque Speed Range	6
Current @ Voltage	10.400 A @ 230.0 V 5.200 A @ 460.0 V
Design Code	-
Drip Cover	No Drip Cover
Duty Rating	CONT
Efficiency @ 100% Load	93.0 %
Electrically Isolated Bearing	Not Electrically Isolated
Feedback Device	NO FEEDBACK
Heater Indicator	No Heater
High Voltage Full Load Amps	5.2 a
Insulation Class	H

## Part detail

Revision	B
Type	AC
Mech. spec.	35E6264
Base	
Status	PRD/A
Elec. spec.	35WGG930
Layout	35LYE6264
Eff. date	09-10-2024
CD Diagram	CD0005A25
Poles	04
Leads	9#14
Proprietary	False
Created date	03-15-2024

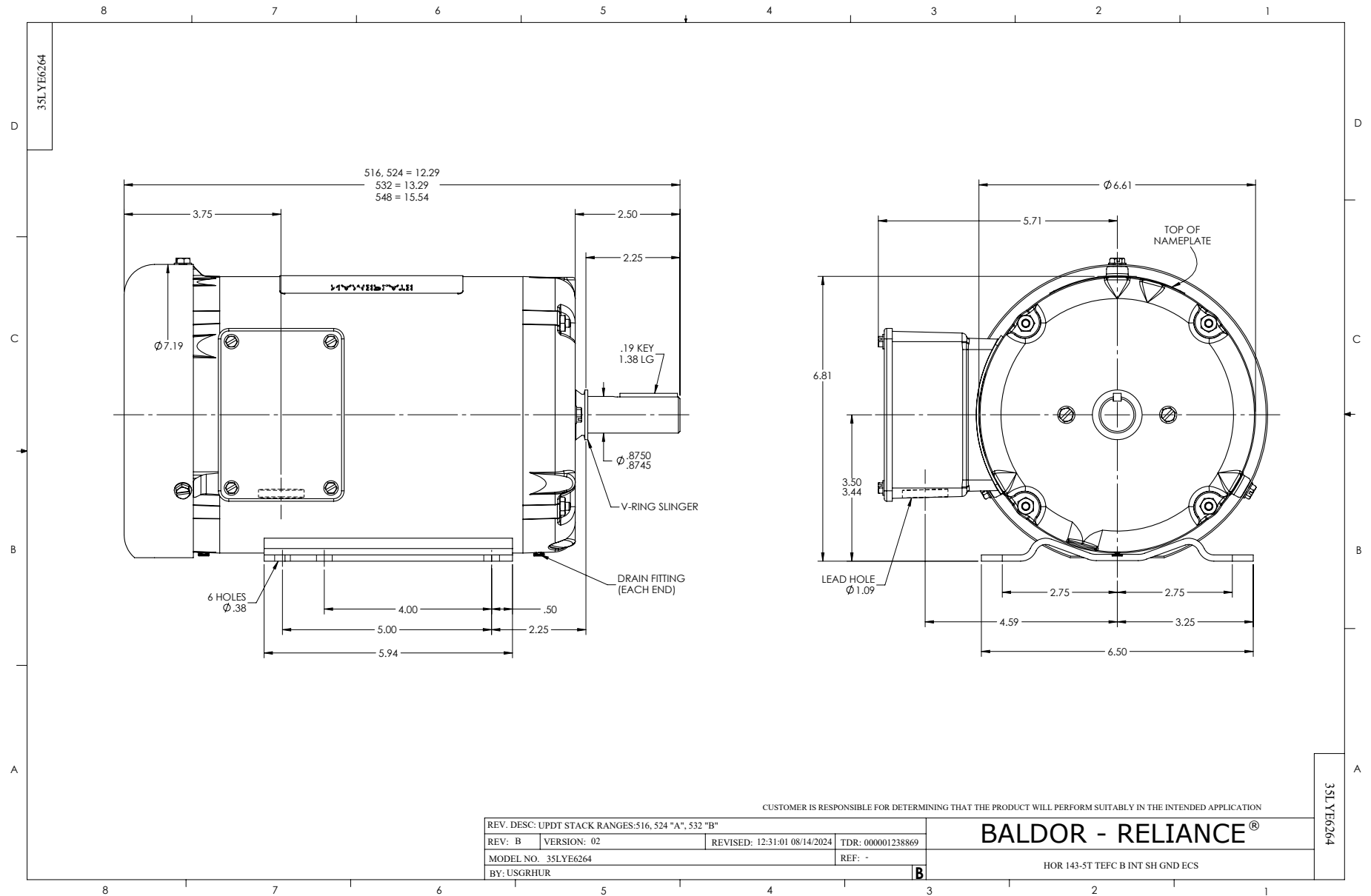
<b>Inverter Code</b>	<b>Inverter Duty</b>
<b>KVA Code</b>	-
<b>Lifting Lugs</b>	No Lifting Lugs
<b>Locked Bearing Indicator</b>	Locked Bearing
<b>Motor Lead Quantity/Wire Size</b>	9 @ 14 AWG
<b>Motor Lead Termination</b>	Flying Leads
<b>Motor Standards</b>	NEMA
<b>Motor Type</b>	3548B
<b>Mounting Arrangement</b>	F1
<b>Number of Poles</b>	4
<b>Overall Length</b>	15.54 IN
<b>Power Factor</b>	97
<b>Product Family</b>	General Purpose
<b>Pulley Face Code</b>	Standard
<b>Rodent Screen</b>	None
<b>RoHS Status</b>	Y
<b>Service Factor</b>	1.15
<b>Shaft Diameter</b>	0.875 IN
<b>Shaft Ground Indicator</b>	Shaft Grounding
<b>Shaft Rotation</b>	Reversible
<b>Speed</b>	1800 rpm
<b>Speed Code</b>	Single Speed
<b>Starting Method</b>	Direct on line
<b>Thermal Device - Bearing</b>	None
<b>Thermal Device - Winding</b>	None
<b>Vibration Sensor Indicator</b>	No Vibration Sensor
<b>Winding Thermal 1</b>	None
<b>Winding Thermal 2</b>	None

## Nameplate

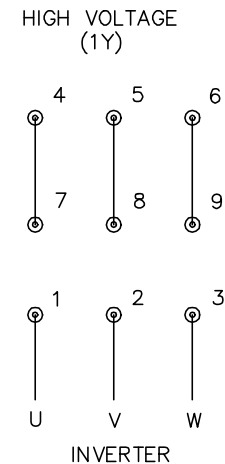
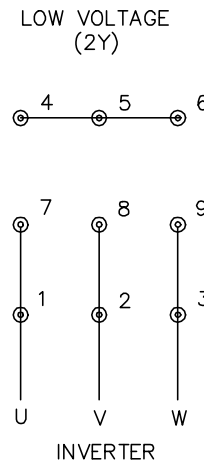
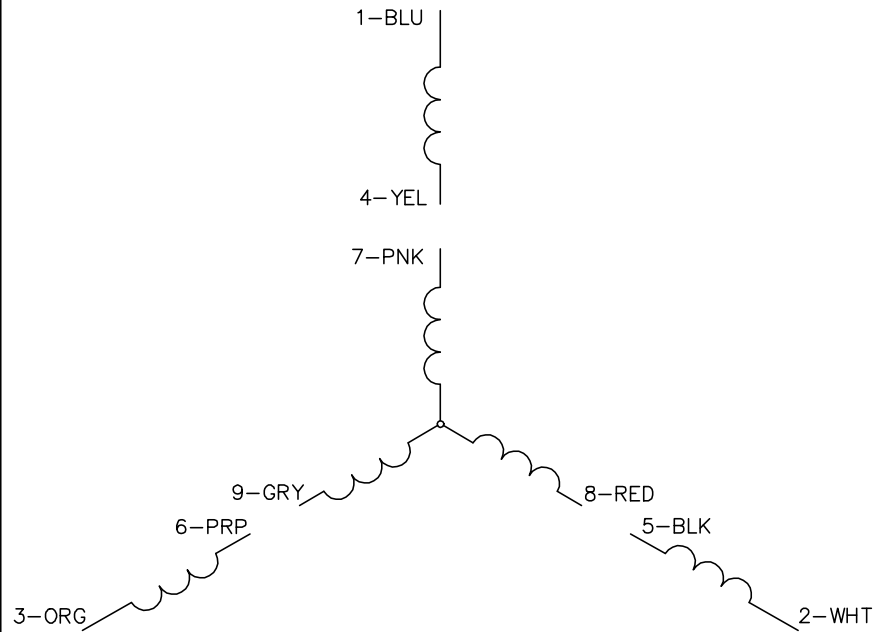
NP3968A01A01									
CAT.NO.	ECS101M0H5DF4								
SPEC.	35E6264G930								
FRAME	145T	ENCL.	TEFC	IP	54				
HP	5	40	C AMB	CONT					
NOM. EFF.	93	PF	97	SF	1.4				
VOLTS	230/460		FLA	10.4/5.2					
RPM	1800		RPM-MAX	4000					
HZ	60		PH.	3	CLASS	H			
BEMF (V)	137/275		RS (OHMS)	0.79/3.18					
LD (MH)	4.2/16.8		LQ (MH)	18.5/74					
VPWM	CHP	60	TO	133					
CT	6	TO	60	VT	6	TO	60		
MATCHED INV	ACS380-04XX-12A2-1 / 07A2-4								
DE	6205		ODE	6203					
SERIAL #									

## Parts list

Part number	Description	Quantity
SA425390	SA 35E6264G930	1.000 ea
RA417489	RA 35E6264G930	1.000 ea
NS2512A01	INSULATOR, CONDUIT BOX X	1.000 ea
35CB3009	35 CB W/1.09 DIA. LEAD HOLE @ 6:	1.000 ea
36GS1000SP	GASKET-CONDUIT BOX, .06 THICK #SV-330 LE	1.000 ea
51XB1016A07	10-16 X 7/16 HXWSSLD SERTYB	2.000 ea
11XW1032G06	10-32 X .38, TAPTITE II, HEX WSHR SLTD U	1.000 ea
35EP3122K00	MASTER ODE,203 BRG, .683SH, #26 DRN, FH MTG	1.000 ea
HA4067A01	PUSH IN DRAIN FITTING (BLACK)	1.000 ea
HW5100A03	WAVY WASHER (W1543-017)	1.000 ea
35EP3123C00	MASTER DE,205 BRG, .998 SH, #26 DRN, LCK BR	1.000 ea
HW4600B32SP	V-RING SLINGER 1.000 X 1.540 X .24 VITON	1.000 ea
51XN1032A18	10-32 X 1 1/8 HX WS SL SR (ESKAY)	2.000 ea
HA4067A01	PUSH IN DRAIN FITTING (BLACK)	1.000 ea
XY1032A02	10-32 HEX NUT DIRECTIONAL SERRATION	4.000 ea
35FH4005A32SP	IEC FH NO GRSR W/3 HOLES - PRIMED	1.000 ea
51XW1032A06	10-32 X .38, TAPTITE II, HEX WSHR SLTD S	3.000 ea
35CB4521GX	CONDUIT BOX LID KIT **ORDER INDIV PARTS	1.000 ea
51XW0832A07	8-32 X .44, TAPTITE II, HEX WSHR SLTD SE	4.000 ea
HW2501D13	KEY, 3/16 SQ X 1.375	1.000 ea
HA7000A01	KEY RETAINER 7/8" DIA SHAFT	1.000 ea
MJ1000A02	GREASE, POLYREX EM EXXON	0.050 lb
35FN3002A05SP	EXFN, PLASTIC, 6.376 OD, .638 ID	1.000 ea
51XB1214A16	12-14X1.00 HXWSSLD SERTYB	1.000 ea
MG1050G01	CELEROL MEDIUM CHARCOAL METALLIC GRAY	0.017 ga
HA3100A26	THRUBOLT 10-32 X 11.500	4.000 ea
NP3968A01A01	NP LABEL WEE, SH GND, C-UL-US, QR, ECS	1.000 ea
36PA1000	PKG GRP, PRINT PK1016A06	1.000 ea
MN451	EC Titanium Quick Start 04/20	1.000 ea
FE-0000001	ZRTG FE ASSEMBLY	1.000 ea
PE-0000001	ZRTG PE ASSEMBLY	1.000 ea



CD0005A25



NOTES:

1. INTERCHANGE ANY TWO LINE LEADS TO REVERSE ROTATION.
2. ACTUAL NUMBER OF INTERNAL PARALLEL CIRCUITS MAY BE A MULTIPLE OF THOSE SHOWN ABOVE.
3. LEAD COLORS ARE OPTIONAL. LEADS MUST ALWAYS BE NUMBERED AS SHOWN.

CD0005A25

REV. DESC: NEW		
REV. LTR: -	VERSION: 00	TDR: 000001135746
FILE: \AAA\00253\082	REVISED: 01:10:57 03/30/2020	BY: ENMARSO
MTL: -	© □	

**BALDOR - RELIANCE®**

3PH, DV, 9 LEADS, ECS  
SH 1 of 1