



Customer information packet

ECTM2276T

7.5 AIR OVERHP, 1180RPM, 3PH, 60HZ, 254T, 095

Class - None

Division - Not Applicable

Specifications

Enclosure	TEAO
Frame	254T
Frame Material	Iron
Frequency	60.00 Hz
Haz Area Class and Group	None
Haz Area Division	Not Applicable
Motor Letter Type	Three Phase
Output @ Frequency	7.500 HP @ 60 HZ
Phase	3
Synchronous Speed @ Frequency	1200 RPM @ 60 HZ
Voltage @ Frequency	230.0 V @ 60 HZ 460.0 V @ 60 HZ
Agency Approvals	UR CSA CSA EEV
Ambient Temperature	40 °C
Auxillary Box	No Auxillary Box
Auxillary Box Lead Termination	None
Base Indicator	Rigid
Bearing Grease Type	Polyrex EM (-20F +300F)
Blower	None
Current @ Voltage	22.000 A @ 230.0 V 11.000 A @ 460.0 V
Design Code	A
Drip Cover	No Drip Cover
Duty Rating	CONT
Efficiency @ 100% Load	91.0 %
Electrically Isolated Bearing	Not Electrically Isolated
Feedback Device	NO FEEDBACK
Front Face Code	Standard
Front Shaft Indicator	None
Heater Indicator	No Heater

Part detail

Revision	W
Type	AC
Mech. spec.	09L877
Base	
Status	PRD/A
Elec. spec.	09WGT118
Layout	09LYL877
Eff. date	11-14-2023
CD Diagram	CD0005
Poles	06
Leads	9#12
Proprietary	False
Created date	08-14-2015

High Voltage Full Load Amps	11.0 a
Insulation Class	F
Inverter Code	Inverter Ready
KVA Code	J
Lifting Lugs	Vertical Lifting Lugs
Locked Bearing Indicator	Locked Bearing
Motor Lead Exit	Ko Box
Motor Lead Quantity/Wire Size	9 @ 12 AWG
Motor Lead Termination	Flying Leads
Motor Standards	NEMA
Motor Type	0954M
Mounting Arrangement	F1
Number of Poles	6
Overall Length	23.00 IN
Power Factor	70
Product Family	Super-E Chemical Processing
Pulley End Bearing Type	Sealed Bearing
Pulley Face Code	Standard
Pulley Shaft Indicator	Standard
Rodent Screen	None
Service Factor	1.15
Shaft Diameter	1.625 IN
Shaft Extension Location	Pulley End
Shaft Ground Indicator	No Shaft Grounding
Shaft Rotation	Reversible
Shaft Slinger Indicator	Shaft Slinger
Speed	1180 rpm
Speed Code	Single Speed
Starting Method	Direct on line
Thermal Device - Bearing	None
Thermal Device - Winding	None
Vibration Sensor Indicator	No Vibration Sensor
Winding Thermal 1	None
Winding Thermal 2	None

Nameplate

NP2178									
CAT.NO.	ECTM2276T								
SPEC.	09L877T118G1								
HP	7.5 AIR OVER								
VOLTS	230/460								
AMP	22/11								
RPM	1180								
FRAME	254T		HZ	60		PH	3		
SER.F.	1.15	CODE	J	DES	A	CL	F		
NEMA-NOM-EFF	91	PF	70						
RATING	40C AMB-CONT								
CC									
DE	6309	ODE	6208						
ENCL	TEAO	SN							
	1800 FPM @ 250CFM								

Parts list

Part number	Description	Quantity
SA305547	SA 09L877T118G1	1.000 ea
RA292772	RA 09L877T118G1	1.000 ea
09CB1002A25P	KOBX W/1.25 NPT LEAD HOLE & 2.38 MTG HOL	1.000 ea
09GS1010	GASKET, DWG, LEADWIRE SEPERATOR	1.000 ea
51XW2520A12	.25-20 X .75, TAPTITE II, HEX WSHR SLTD	4.000 ea
HA4044A00	PLUG,PIPE 1/8 NPT PLASTIC SQUARE HEAD	2.000 ea
WD1000B16	T&B CX70TN OR L70P TERMINAL LUG	1.000 ea
59XW2520G07	.25-20X.44,HEX SER WSHR,TAPTITE 2,GREEN	1.000 ea
09EP1100C58P	FREP W/PRIMER, SPL DRAINS & AIR RELIEF	1.000 ea
10XN3816K28	3/8-16 X 1.75 HEX HD CAP SCREW, GRADE 5	4.000 ea
HW1001A38	LOCKWASHER 3/8, ZINC PLT .688 OD, .382 I	4.000 ea
HW4500A17	317400 ALEMITE GREASE RELIEF	1.000 ea
HA7205	"L" SHAPE LIFTING LUG FOR 37,39 & 40 FRA	2.000 ea
HW4600B53	SEAL 1.688 X 2.275 X 0.312 SINGLE LIP DB	1.000 ea
HW5100A08	W3118-035 WVY WSHR (WB)	1.000 ea
09EP1101A162P	SPL PU EP,MODEL 309 - 309 BRG W/EPOXY PR	1.000 ea
10XN3816K24	3/8-16 X 1.50 HEX HD CAP SCREW, GRADE 5	4.000 ea
HW1001A38	LOCKWASHER 3/8, ZINC PLT .688 OD, .382 I	4.000 ea
HW4600B44	V-RING SLINGER 1.500 X 1.810 X .28 VITON	1.000 ea
HW4600G53	DOME SLINGER, 5.438 OD X 1.620/1.562 ID	1.000 ea
10XN2520K36	1/4-20 X 2.25" HX HD SCRWGRADE 5, ZINC P	4.000 ea
12CB1503P	CONDUIT BOX LID, CAST W/EPOXY PRIMER	1.000 ea
12GS1002	GASKET, CONDUIT BOX LID, NEOP	1.000 ea
10XN3118K16	5/16-18 X 1' GRADE #5, STL, ZINC PLATE	2.000 ea
HW1001A31	LOCKWASHER 5/16, ZINC PLT.591 OD, .319 I	2.000 ea
HW2501G25	KEY, 3/8 SQ X 2.875	1.000 ea
MJ5001A14	DYNAPRO SEALANT, CP MTR VC#2508050 (603	0.023 ea
MJ5001A27	32220KN GRAY SEALER *MIN BUY 4 QTS=1GAL	0.031 qt
MJ5002A01	SILICON RUBBER SEALANT, 732CL 10.3 OZ TU	0.025 ea
LB1002N	LABEL,MARINE DUTY (ON ROLLS)	1.000 ea
LB1182	WARNING LABEL FOR MOTORS WITH EYENUTS	2.000 ea

HA4054	SHORT T-DRAIN FITTING, .125" N.P.T.	3.000 ea
MG1025G05	WILKOFAST, 789.227, MED. GRAY CHAR. MET.	0.050 ga
MJ1000A02	GREASE, POLYREX EM EXXON	0.080 lb
HA4054	SHORT T-DRAIN FITTING, .125" N.P.T.	3.000 ea
85XU0407S04	4X1/4 U DRIVE PIN STAINLESS	2.000 ea
LC0005E01	SPL CONN.DIA./WARN.LABEL(LC0005/LB1119)	1.000 ea
LB1624	COMBINED WARNING LABEL, ISO/ANSI PICTOGR	1.000 ea
NP2178	SS CP SUPER-E UL CC	1.000 ea
40PA1005	PACKAGING GROUP, 09 STD	1.000 ea
MN416A01	TAG-INSTAL-MAINT no wire (2500bx)4/22	1.000 ea

AC Induction Motor Performance Data

Record # 47559

Typical performance - not guaranteed values

Winding: 09WGT118-R003		Type: 0954M	Enclosure: TEAO		
Nameplate Data			460 V, 60 Hz: High Voltage Connection		
Rated Output (HP)	7.5 AIR OVER	Full Load Torque	33.2 LB-FT		
Volts	230/460	Start Configuration	direct on line		
Full Load Amps	22/11	Breakdown Torque	113 LB-FT		
R.P.M.	1180	Pull-up Torque	41.3 LB-FT		
Hz	60 Phase	3	Locked-rotor Torque	57.4 LB-FT	
NEMA Design Code	A	KVA Code	J	Starting Current	74.8 A
Service Factor (S.F.)	1.15		No-load Current	6.06 A	
NEMA Nom. Eff.	91	Power Factor	70	Line-line Res. @ 25°C	0.87037 Ω
Rating - Duty	40C AMB-CONT		Temp. Rise @ Rated Load	36°C	
S.F. Amps			Temp. Rise @ S.F. Load	42°C	

Load Characteristics 460 V, 60 Hz, 7.5 HP

% of Rated Load	25	50	75	100	125	150	S.F.
Power Factor	32	52	63	70	74	75	72
Efficiency	83.2	89.4	90.9	91.1	90.7	89.9	90.9
Speed	1196.5	1192.4	1188.3	1183.7	1178.7	1173.2	1181
Line amperes	6.49	7.59	9.09	11	13.1	15.5	12.3

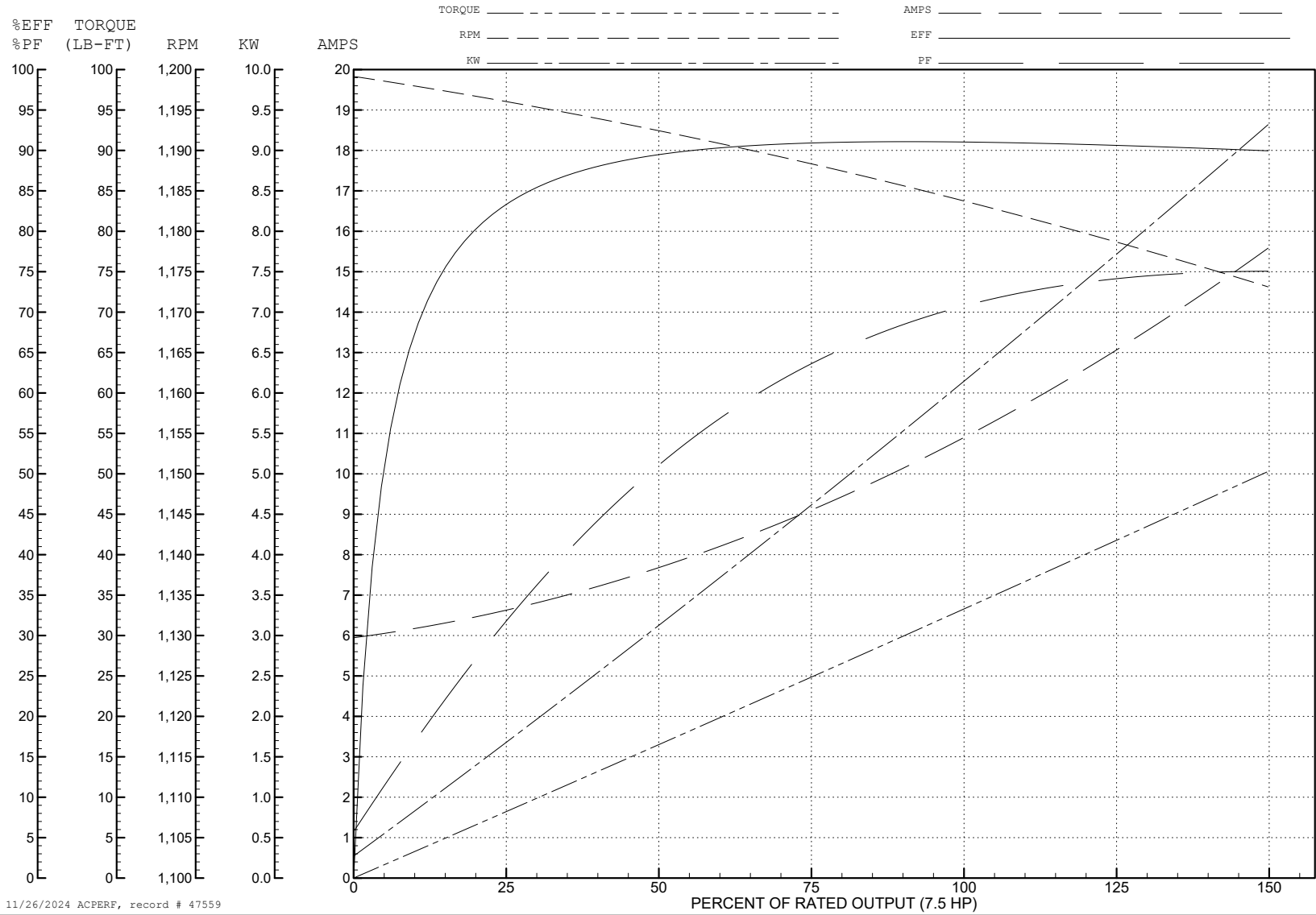
ABB Motors and Mechanical Inc.

WINDING # 09WGT118

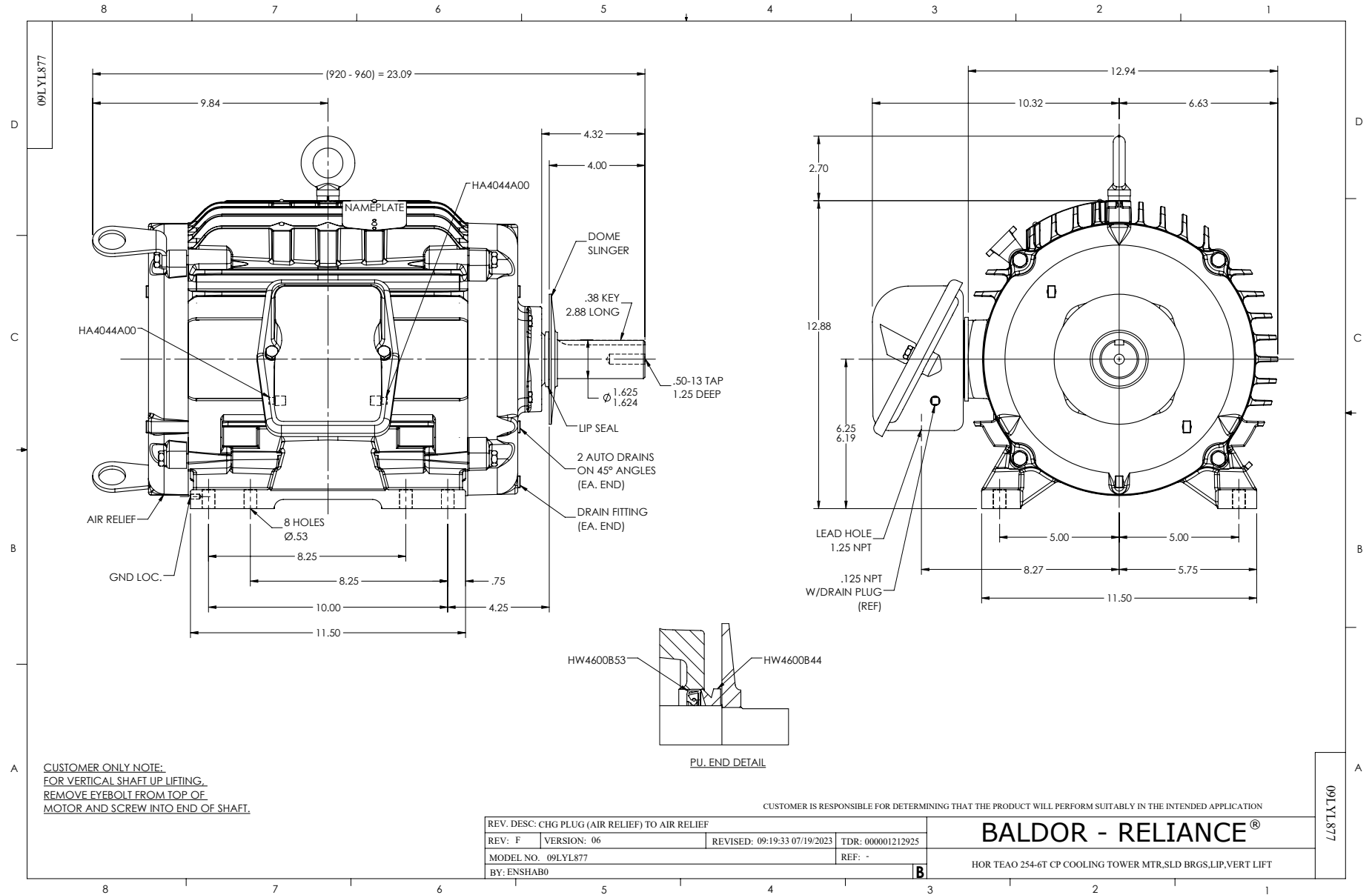
7.5 HP 3 PH 60 HZ 1180 RPM 460 V 0954M

Typical performance - not guaranteed values.

TORQUES (LB-FT): PO=113 PU=41.3 LR=57.4 LRA=74.8



11/26/2024 ACPERP, record # 47559



CD0005



LOW VOLTAGE
(2Y)



LINE

HIGH VOLTAGE
(1Y)



LINE

NOTES:

1. INTERCHANGE ANY TWO LINE LEADS TO REVERSE ROTATION.
2. OPTIONAL THERMOSTATS ARE PROVIDED WHEN SPECIFIED.
3. ACTUAL NUMBER OF INTERNAL PARALLEL CIRCUITS MAY BE A MULTIPLE OF THOSE SHOWN ABOVE.
4. LEAD COLORS ARE OPTIONAL. LEADS MUST ALWAYS BE NUMBERED AS SHOWN.

CD0005

REV. DESC: REVISE TO SHOW OPTIONAL COLORS			
REV. LTR: E	BY: JLP	REVISED: 01/19/99 10:15	TDR: 0171435
S00000		FILE: AAA00005140	MDL: -
		MTL: -	

BALDOR ELECTRIC Co.

3PH, DV, 9 LEADS