

**BALDOR • RELIANCE**

---

# Customer information packet

## ECTM3611T-57

3 AIR OVERHP, 1460RPM, 3PH, 50HZ, 213TZ, 3728

Class - None

Division - Not Applicable

## Specifications

Enclosure	TEAO
Frame	213TZ
Frame Material	Steel
Frequency	50.00 Hz
Haz Area Class and Group	None
Haz Area Division	Not Applicable
Motor Letter Type	Three Phase
Output @ Frequency	3.000 HP @ 50 HZ
Phase	3
Synchronous Speed @ Frequency	1500 RPM @ 50 HZ
Voltage @ Frequency	230.0 V @ 50 HZ 380.0 V @ 50 HZ 415.0 V @ 50 HZ
Agency Approvals	CSA CE UR
Ambient Temperature	40 °C
Auxillary Box	No Auxillary Box
Auxillary Box Lead Termination	None
Base Indicator	Rigid
Bearing Grease Type	Polyrex EM (-20F +300F)
Blower	None
Current @ Voltage	4.800 A @ 415.0 V 4.900 A @ 380.0 V 8.400 A @ 230.0 V
Design Code	B
Drip Cover	No Drip Cover
Duty Rating	CONT
Efficiency @ 100% Load	87.5 %
Electrically Isolated Bearing	Not Electrically Isolated
Feedback Device	NO FEEDBACK
Front Face Code	Standard

## Part detail

Revision	H
Type	AC
Mech. spec.	37Q128
Base	
Status	PRD/A
Elec. spec.	37WGL440
Layout	37LYQ128
Eff. date	05-14-2024
CD Diagram	CD0022
Poles	04
Leads	6#14
Proprietary	False
Created date	03-07-2017

Front Shaft Indicator	None
Heater Indicator	No Heater
High Voltage Full Load Amps	4.8 a
Insulation Class	F
Inverter Code	Inverter Ready
KVA Code	L
Lifting Lugs	Standard Lifting Lugs
Locked Bearing Indicator	No Locked Bearing
Motor Lead Exit	Ko Box
Motor Lead Quantity/Wire Size	6 @ 14 AWG
Motor Lead Termination	Flying Leads
Motor Standards	NEMA
Motor Type	3728M
Mounting Arrangement	F1
Number of Poles	4
Overall Length	16.32 IN
Power Factor	73
Product Family	WP Below Decks Marine Duty
Pulley End Bearing Type	Ball
Pulley Face Code	Standard
Pulley Shaft Indicator	Tapped & Key
Rodent Screen	None
RoHS Status	ROHS COMPLIANT
Service Factor	1.00
Shaft Diameter	1.375 IN
Shaft Extension Location	Pulley End
Shaft Ground Indicator	No Shaft Grounding
Shaft Rotation	Reversible
Shaft Slinger Indicator	Shaft Slinger
Speed	1460 rpm
Speed Code	Single Speed
Starting Method	Direct on line
Thermal Device - Bearing	None
Thermal Device - Winding	None

<b>Vibration Sensor Indicator</b>	<b>No Vibration Sensor</b>
<b>Winding Thermal 1</b>	<b>None</b>
<b>Winding Thermal 2</b>	<b>None</b>

**Nameplate**

<b>NP2735L</b>										
<b>CAT NO</b>	ECTM3611T-57									
<b>SPEC.</b>	37Q128L440G1									
<b>HP</b>	3/2.2KW AIR OVER						<b>PH</b>	3		
<b>VOLTS</b>	230/380-415									
<b>AMP</b>	8.4/4.9-4.8									
<b>RPM</b>	1460 1/MIN									
<b>FRAME</b>	213TZ		<b>HZ</b>	50			<b>I.P.</b>	55		
<b>SER.F.</b>	1.00	<b>CODE</b>	L	<b>DES</b>	B	<b>CL</b>	F			
<b>NOM.EFF.</b>	87.5		<b>% (100%)</b>							
<b>PF</b>	73		<b>USABLE AT 208V</b>				N/A			
<b>RATING</b>	40C AMB-CONT			<b>CC</b>						
<b>DE BRG</b>	6307		<b>ODE</b>	6206						
<b>ENCL</b>	TEAO	<b>SN</b>								
<b>BLANK</b>	IE3 - 87.9 (75%) 84.8 (50%)									
	IC418 53KG									

## Parts list

Part number	Description	Quantity
SA335320	SA 37Q128L440G1	1.000 ea
RA323516	RA 37Q128L440G1	1.000 ea
HW3200A01	3/8-16X3/4 EYEBOLT WELDED F/S	1.000 ea
37CB3005A04	37 CB .75 NPT @ 6:00	1.000 ea
37GS1000SP	GASKET, CONDUIT BOX STD., .06 THICK LEXI	1.000 ea
51XW2520A12	.25-20 X .75, TAPTITE II, HEX WSHR SLTD	2.000 ea
11XW1032G06	10-32 X .38, TAPTITE II, HEX WSHR SLTD U	1.000 ea
37EP3101B88	FREP 37L&M-TENV MTR, FACE DRAINS	1.000 ea
HA4054	SHORT T-DRAIN FITTING, .125" N.P.T.	3.000 ea
37PE3100A42	37 PUEP ASSEMBLY FOR SEAL	1.000 ea
HW4600H13	SEAL 1.375 X 2.125 X 0.313 SINGLE LIP DB	1.000 ea
HW5100A08	W3118-035 WVY WSHR (WB)	1.000 ea
XY3118A12	5/16-18 HEX NUT DIRECTIONAL SERRATION	4.000 ea
37CB4516	LIPPED LID FOR 37 FRAME NEC KOBX	1.000 ea
37GS1008	37 GS FOR CB LID - LEXIDE	1.000 ea
51XW0832A07	8-32 X .44, TAPTITE II, HEX WSHR SLTD SE	4.000 ea
HW4600C51	31X39X7.5MM FACE SEAL FOR 1.375 DIA. SH	1.000 ea
HW4600G52	DOME SLINGER, 5.438 OD X 1.370/1.320 ID	1.000 ea
HW2501F21	KEY, 5/16 SQ X 2.375	1.000 ea
HA7000A02	KEY RETAINER RING, 1 1/8 DIA, 1 3/8 DIA	1.000 ea
MJ5001A27	32220KN GRAY SEALER *MIN BUY 4 QTS=1GAL	0.001 qt
85XU0407S04	4X1/4 U DRIVE PIN STAINLESS	2.000 ea
MJ1000A02	GREASE, POLYREX EM EXXON	0.050 lb
MG1050G01	CELEROL MEDIUM CHARCOAL METALLIC GRAY	0.028 ga
HA3104A14	THRUBOLT- 5/16-18 X12.125(OHIO)	4.000 ea
LC0034	CONNECTION LABEL	1.000 ea
NP2735L	SS SUPER-E NEMA IE3 UL CSA CC CE	1.000 ea
36PA1001	PKG GRP, PRINT PK1017A06	1.000 ea
MN416A01	TAG-INSTAL-MAINT no wire (2500bx)4/22	1.000 ea
LB1624	COMBINED WARNING LABEL, ISO/ANSI PICTOGR	1.000 ea
LB1617	UKCA COMPLIANCE STICKER	1.000 ea

**AC Induction Motor Performance Data**

Record # 62989

Typical performance - not guaranteed values

Winding: 37WGL440-R001		Type: 3728M	Enclosure: TEAO	
<b>Nameplate Data</b>			<b>415 V, 50 Hz: High Voltage Connection</b>	
Rated Output (HP)	3 AIR OVER		Full Load Torque	10.71 LB-FT
Volts	230/380-415		Start Configuration	direct on line
Full Load Amps	8.4/4.9-4.8		Breakdown Torque	43.22 LB-FT
R.P.M.	1460		Pull-up Torque	27.12 LB-FT
Hz	50 Phase	3	Locked-rotor Torque	30.78 LB-FT
NEMA Design Code	B KVA Code	L	Starting Current	40.01 A
Service Factor (S.F.)	1		No-load Current	2.85 A
NEMA Nom. Eff.	87.5 Power Factor	73	Line-line Res. @ 25°C	2.72 Ω
Rating - Duty	40C AMB-CONT		Temp. Rise @ Rated Load	27°C
			Locked-rotor Power Factor	46
			Rotor inertia	0.689 LB-FT <sup>2</sup>

**Load Characteristics 415 V, 50 Hz, 3 HP**

% of Rated Load	25	50	75	100	125	150
Power Factor	34	53	66	73	78	81
Efficiency	76.9	84.8	87.8	88.5	87.8	87.4
Speed	1493	1486	1478	1470	1462	1452
Line amperes	3.01	3.42	4.05	4.79	5.64	6.61

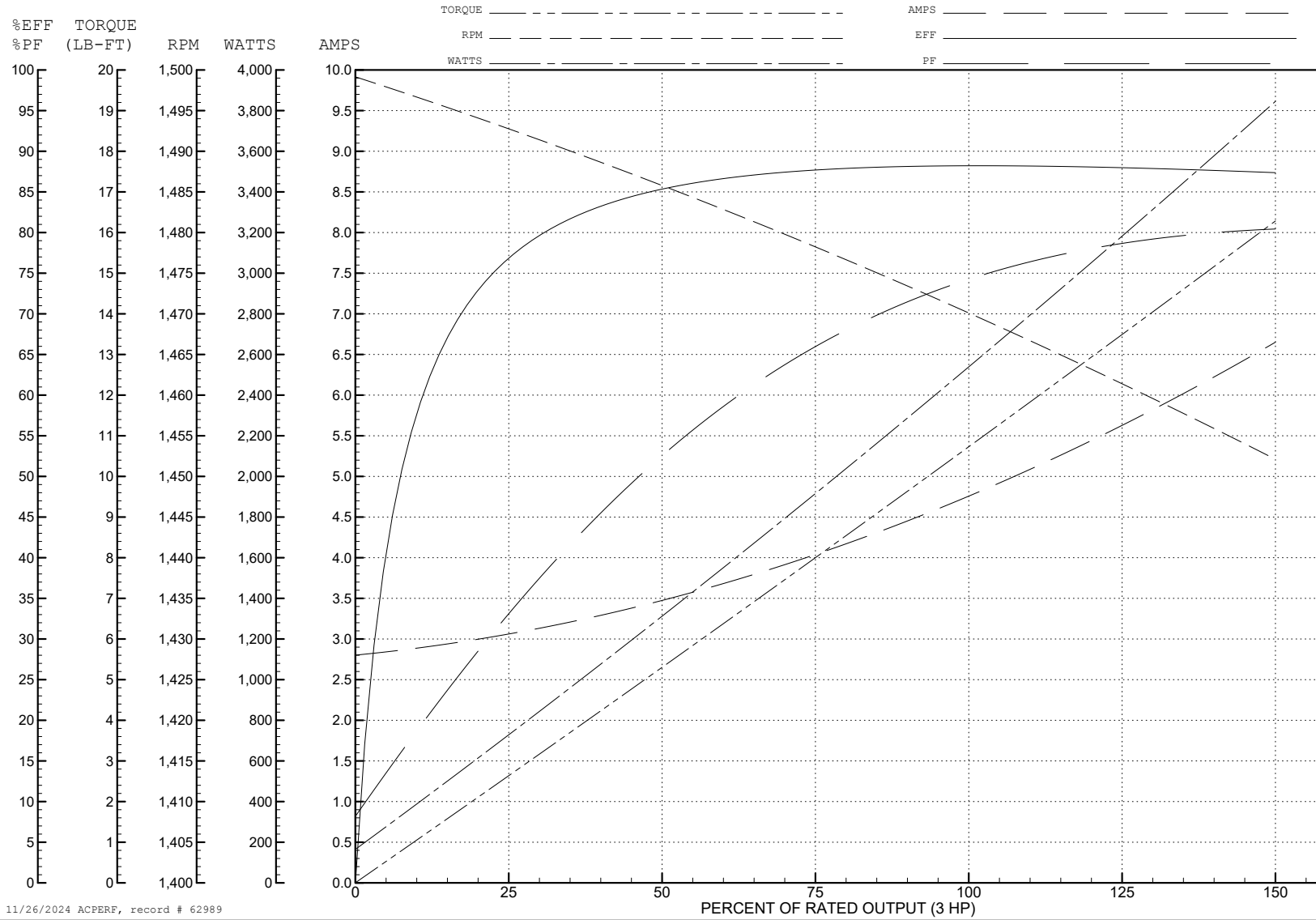
ABB Motors and Mechanical Inc.

WINDING # 37WGL440

3 HP 3 PH 50 HZ 1460 RPM 415 V 3728M

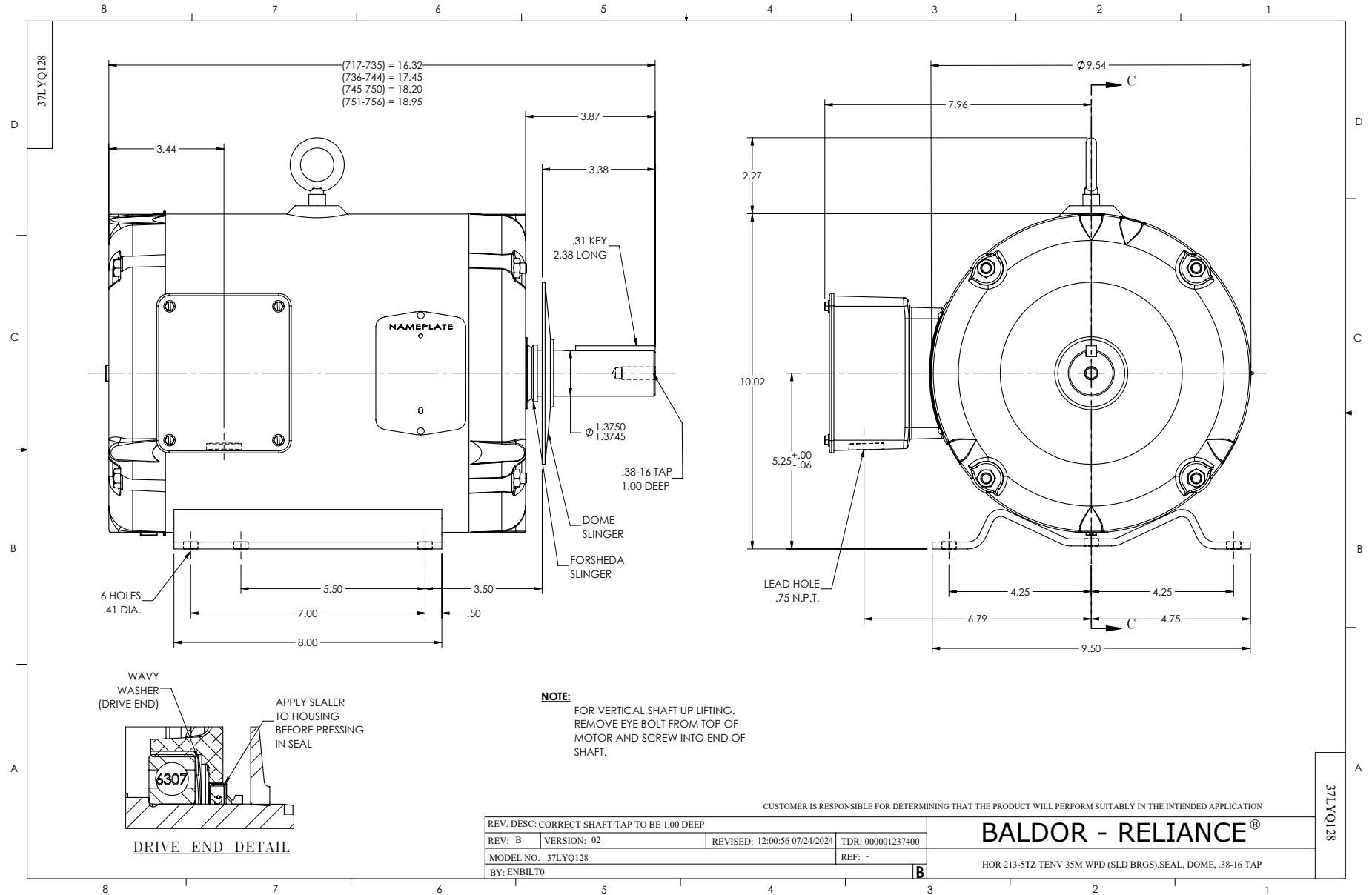
Typical performance - not guaranteed values.

TORQUES (LB-FT): PO=43.22 PU=27.12 LR=30.78 LRA=40.01

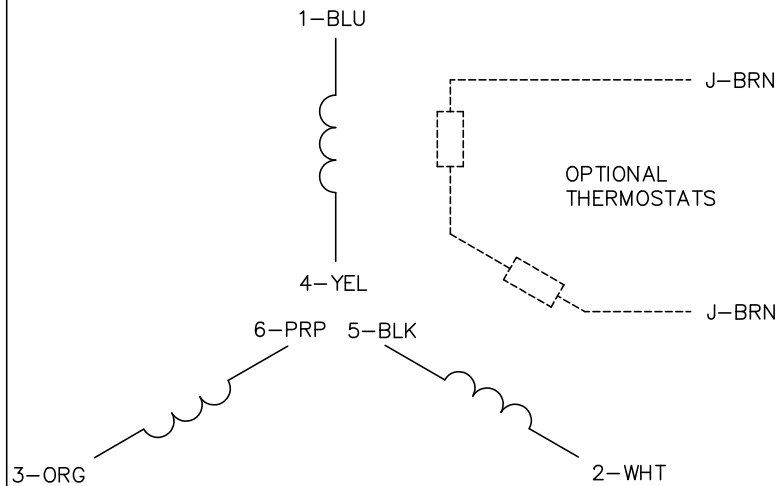


11/26/2024 ACPERF, record # 62989

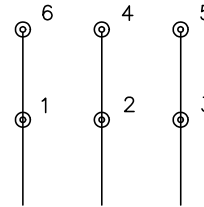




CD0022

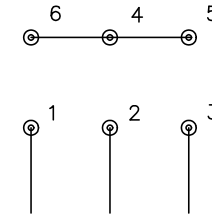


LOW VOLTAGE  
(1D)



LINE

HIGH VOLTAGE  
(1Y)



LINE

NOTES:

1. INTERCHANGE ANY TWO LINE LEADS TO REVERSE ROTATION.
2. OPTIONAL THERMOSTATS ARE PROVIDED WHEN SPECIFIED.
3. ACTUAL NUMBER OF INTERNAL PARALLEL CIRCUITS MAY BE A MULTIPLE OF THOSE SHOWN ABOVE.
4. LEAD COLORS ARE OPTIONAL. LEADS MUST ALWAYS BE NUMBERED AS SHOWN.

REV. DESC: REVISE TO SHOW OPTIONAL COLORS			
REV. LTR: F	BY: JLP	REVISED: 01/21/99 3:54	TDR: 0171435
CD0022		FILE: AAA00005144	MDL: -
		MTL: -	

**BALDOR ELECTRIC Co.**

3PH, DV, 6 LEADS, DELTA/WYE CONNECTION

CD0022