

BALDOR • RELIANCE

Customer information packet

ECTM3615T-57

3 AIR OVERHP, 1160RPM, 3PH, 60HZ, 213TZ, 3738

Class - None

Division - Not Applicable

Specifications

Enclosure	TEAO
Frame	213TZ
Frame Material	Steel
Frequency	50.00 Hz
Haz Area Class and Group	None
Haz Area Division	Not Applicable
Motor Letter Type	Three Phase
Output @ Frequency	5.000 HP @ 50 HZ
Phase	3
Synchronous Speed @ Frequency	1500 RPM @ 50 HZ
Voltage @ Frequency	230.0 V @ 50 HZ 380.0 V @ 50 HZ 415.0 V @ 50 HZ
Agency Approvals	CSA CE UR
Ambient Temperature	40 °C
Auxillary Box	No Auxillary Box
Auxillary Box Lead Termination	None
Base Indicator	Rigid
Bearing Grease Type	Polyrex EM (-20F +300F)
Blower	None
Current @ Voltage	13.000 A @ 230.0 V 7.400 A @ 415.0 V 7.700 A @ 380.0 V
Design Code	B
Drip Cover	No Drip Cover
Duty Rating	CONT
Efficiency @ 100% Load	88.5 %
Electrically Isolated Bearing	Not Electrically Isolated
Feedback Device	NO FEEDBACK
Front Face Code	Standard

Part detail

Revision	J
Type	AC
Mech. spec.	37Q128
Base	
Status	PRD/A
Elec. spec.	37WGL441
Layout	37LYQ128
Eff. date	05-14-2024
CD Diagram	CD0022
Poles	04
Leads	6#14
Proprietary	False
Created date	03-07-2017

Front Shaft Indicator	None
Heater Indicator	No Heater
High Voltage Full Load Amps	7.4 a
Insulation Class	F
Inverter Code	Inverter Ready
KVA Code	J
Lifting Lugs	Standard Lifting Lugs
Locked Bearing Indicator	No Locked Bearing
Motor Lead Exit	Ko Box
Motor Lead Quantity/Wire Size	6 @ 14 AWG
Motor Lead Termination	Flying Leads
Motor Standards	NEMA
Motor Type	3736M
Mounting Arrangement	F1
Number of Poles	4
Overall Length	17.45 IN
Power Factor	77
Product Family	WP Below Decks Marine Duty
Pulley End Bearing Type	Ball
Pulley Face Code	Standard
Pulley Shaft Indicator	Tapped & Key
Rodent Screen	None
RoHS Status	ROHS COMPLIANT
Service Factor	1.00
Shaft Diameter	1.375 IN
Shaft Extension Location	Pulley End
Shaft Ground Indicator	No Shaft Grounding
Shaft Rotation	Reversible
Shaft Slinger Indicator	Shaft Slinger
Speed	1460 rpm
Speed Code	Single Speed
Starting Method	Direct on line
Thermal Device - Bearing	None
Thermal Device - Winding	None

Vibration Sensor Indicator	No Vibration Sensor
Winding Thermal 1	None
Winding Thermal 2	None

Nameplate

NP2735L										
CAT NO	ECTM3615T-57									
SPEC.	37Q128L441G1									
HP	5/3.7KW AIR OVER						PH	3		
VOLTS	230/380-415									
AMP	13/7.7-7.4									
RPM	1460 1/MIN									
FRAME	213TZ		HZ	50			I.P.	55		
SER.F.	1.00	CODE	J	DES	B	CL	F			
NOM.EFF.	88.5		% (100%)							
PF	77		USABLE AT 208V				N/A			
RATING	40C AMB-S1 CONT			CC						
DE BRG	6307		ODE	6206						
ENCL	TEAO	SN								
BLANK	IE3-90.7(75%)91.7(50%)									
	IC418 61KG									

Parts list

Part number	Description	Quantity
SA335321	SA 37Q128L441G1	1.000 ea
RA323517	RA 37Q128L441G1	1.000 ea
HW3200A01	3/8-16X3/4 EYEBOLT WELDED F/S	1.000 ea
37CB3005A04	37 CB .75 NPT @ 6:00	1.000 ea
37GS1000SP	GASKET, CONDUIT BOX STD., .06 THICK LEXI	1.000 ea
51XW2520A12	.25-20 X .75, TAPTITE II, HEX WSHR SLTD	2.000 ea
11XW1032G06	10-32 X .38, TAPTITE II, HEX WSHR SLTD U	1.000 ea
37EP3101B88	FREP 37L&M-TENV MTR, FACE DRAINS	1.000 ea
HA4054	SHORT T-DRAIN FITTING, .125" N.P.T.	3.000 ea
37PE3100A42	37 PUEP ASSEMBLY FOR SEAL	1.000 ea
HW4600H13	SEAL 1.375 X 2.125 X 0.313 SINGLE LIP DB	1.000 ea
HW5100A08	W3118-035 WVY WSHR (WB)	1.000 ea
XY3118A12	5/16-18 HEX NUT DIRECTIONAL SERRATION	4.000 ea
37CB4516	LIPPED LID FOR 37 FRAME NEC KOBX	1.000 ea
37GS1008	37 GS FOR CB LID - LEXIDE	1.000 ea
51XW0832A07	8-32 X .44, TAPTITE II, HEX WSHR SLTD SE	4.000 ea
HW4600C51	31X39X7.5MM FACE SEAL FOR 1.375 DIA. SH	1.000 ea
HW4600G52	DOME SLINGER, 5.438 OD X 1.370/1.320 ID	1.000 ea
HW2501F21	KEY, 5/16 SQ X 2.375	1.000 ea
HA7000A02	KEY RETAINER RING, 1 1/8 DIA, 1 3/8 DIA	1.000 ea
MJ5001A27	32220KN GRAY SEALER *MIN BUY 4 QTS=1GAL	0.001 qt
85XU0407S04	4X1/4 U DRIVE PIN STAINLESS	2.000 ea
MJ1000A02	GREASE, POLYREX EM EXXON	0.050 lb
MG1050G01	CELEROL MEDIUM CHARCOAL METALLIC GRAY	0.028 ga
HA3104A17	5/16-18X13.250 T-BLT/OHIO	4.000 ea
LC0034	CONNECTION LABEL	1.000 ea
NP2735L	SS SUPER-E NEMA IE3 UL CSA CC CE	1.000 ea
37PA1074	PALLET PACK GRP, PRINT BOX PK1026A06	1.000 ea
MN416A01	TAG-INSTAL-MAINT no wire (2500bx)4/22	1.000 ea
LB1624	COMBINED WARNING LABEL, ISO/ANSI PICTOGR	1.000 ea
LB1617	UKCA COMPLIANCE STICKER	1.000 ea

AC Induction Motor Performance Data

Record # 62992

Typical performance - not guaranteed values

Winding: 37WGL441-R001		Type: 3736M		Enclosure: TEAO		
Nameplate Data			415 V, 50 Hz: High Voltage Connection			
Rated Output (HP)	5 AIR OVER		Full Load Torque	17.75 LB-FT		
Volts	230/380-415		Start Configuration	direct on line		
Full Load Amps	13/7.7-7.4		Breakdown Torque	56.34 LB-FT		
R.P.M.	1460		Pull-up Torque	33.81 LB-FT		
Hz	50	Phase	3	Locked-rotor Torque	41.28 LB-FT	
NEMA Design Code	B		KVA Code	J	Starting Current	55.15 A
Service Factor (S.F.)	1		No-load Current	3.55 A		
NEMA Nom. Eff.	88.5	Power Factor	77	Line-line Res. @ 25°C	2.3 Ω	
Rating - Duty	40C AMB-CONT		Temp. Rise @ Rated Load	42°C		
			Locked-rotor Power Factor	45.5		
			Rotor inertia	0.885 LB-FT ²		

Load Characteristics 415 V, 50 Hz, 5 HP

% of Rated Load	25	50	75	100	125	150
Power Factor	39	60	72	77	81	82
Efficiency	85.3	89.7	90.6	90.3	89.6	87.3
Speed	1492	1486	1478	1471	1462	1452
Line amperes	3.9	4.74	5.91	7.37	8.98	10.83

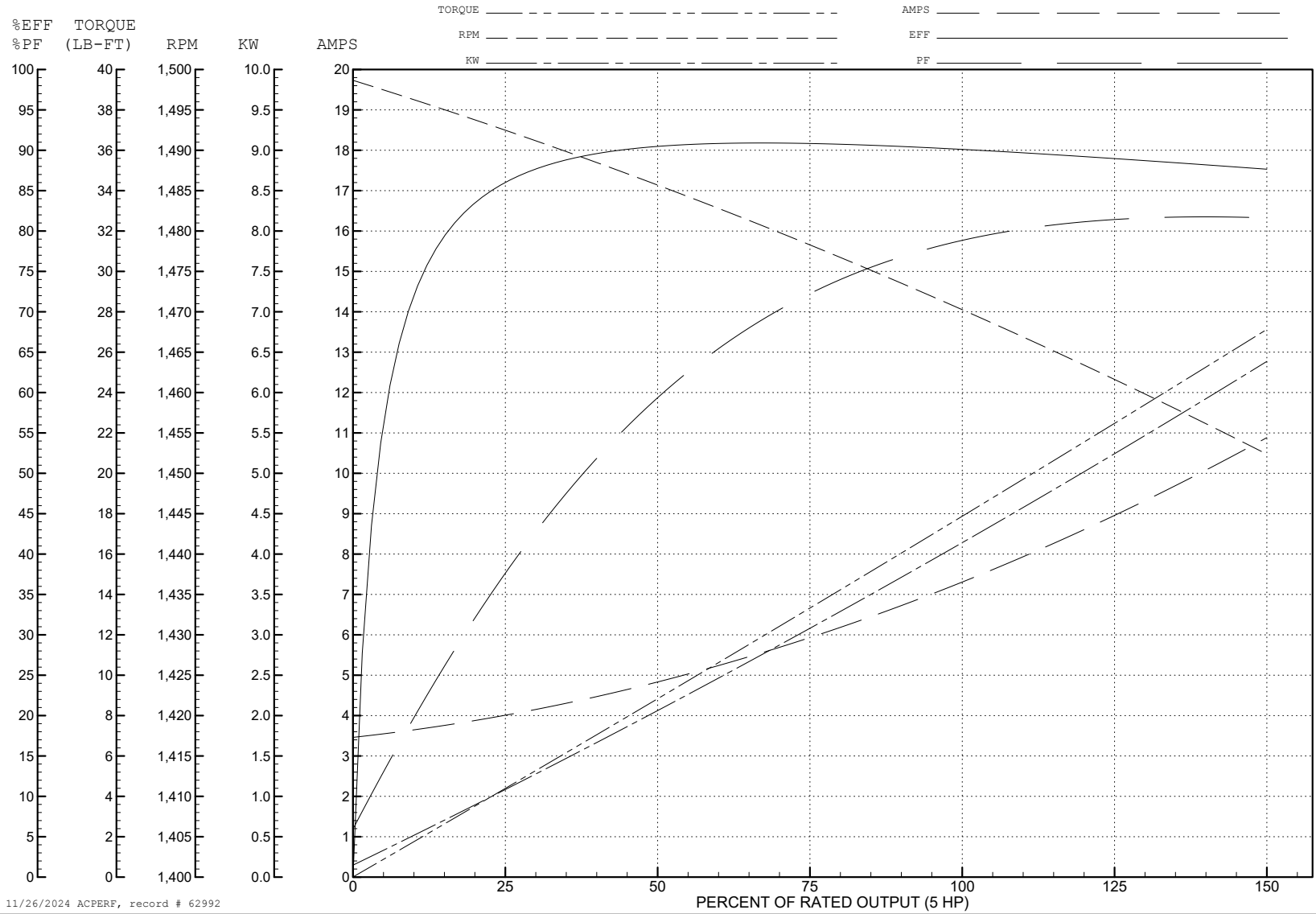
ABB Motors and Mechanical Inc.

WINDING # 37WGL441

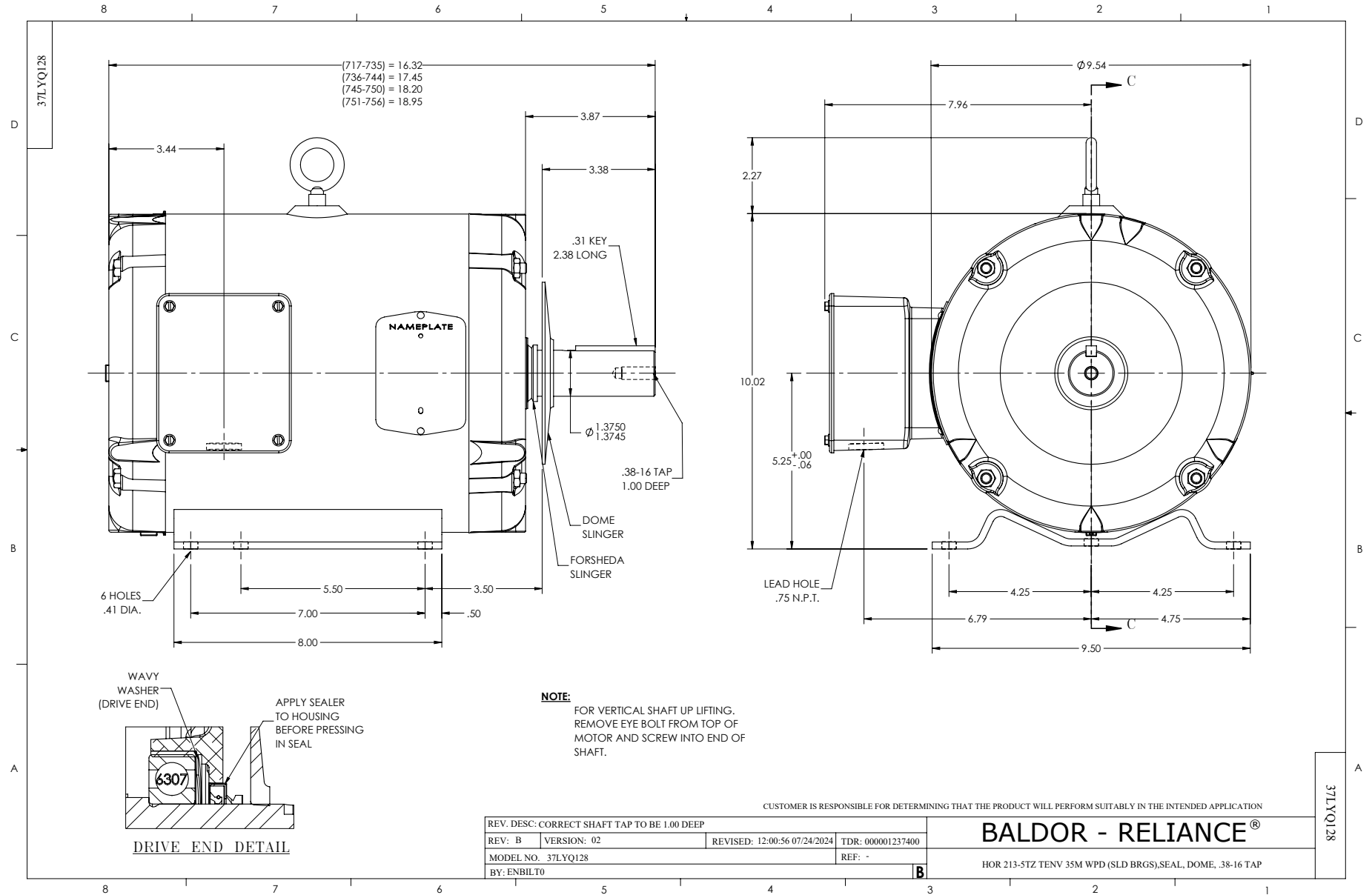
Typical performance - not guaranteed values.

5 HP 3 PH 50 HZ 1460 RPM 415 V 3736M

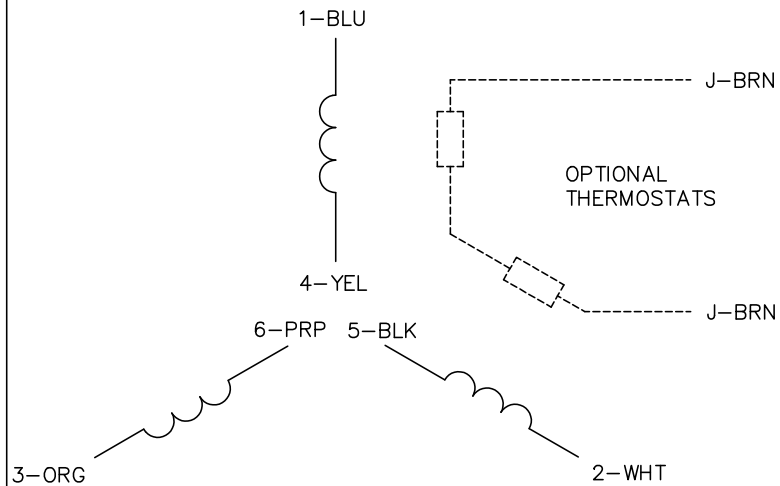
TORQUES (LB-FT): PO=56.34 PU=33.81 LR=41.28 LRA=55.15



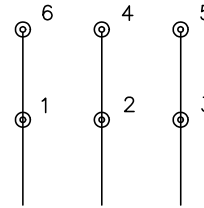
11/26/2024 ACPERF, record # 62992



CD0022

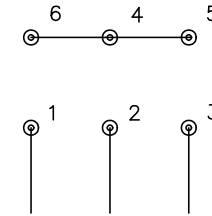


LOW VOLTAGE
(1D)



LINE

HIGH VOLTAGE
(1Y)



LINE

NOTES:

1. INTERCHANGE ANY TWO LINE LEADS TO REVERSE ROTATION.
2. OPTIONAL THERMOSTATS ARE PROVIDED WHEN SPECIFIED.
3. ACTUAL NUMBER OF INTERNAL PARALLEL CIRCUITS MAY BE A MULTIPLE OF THOSE SHOWN ABOVE.
4. LEAD COLORS ARE OPTIONAL. LEADS MUST ALWAYS BE NUMBERED AS SHOWN.

REV. DESC: REVISE TO SHOW OPTIONAL COLORS			
REV. LTR: F	BY: JLP	REVISED: 01/21/99 3:54	TDR: 0171435
CD0022		FILE: AAA00005144	MDL: -
		MTL: -	

BALDOR ELECTRIC Co.

3PH, DV, 6 LEADS, DELTA/WYE CONNECTION

CD0022