



Customer information packet

ECTM4314T

60HP, 1780RPM, 3PH, 60HZ, 364T, 1462M, TEAO, F1

Class - None

Division - Not Applicable

Specifications

| | |
|-------------------------------|---|
| Enclosure | TEAO |
| Frame | 364T |
| Frame Material | Iron |
| Frequency | 60.00 Hz |
| Haz Area Class and Group | None |
| Haz Area Division | Not Applicable |
| Motor Letter Type | Three Phase |
| Output @ Frequency | 60.000 HP @ 60 HZ |
| Phase | 3 |
| Synchronous Speed @ Frequency | 1800 RPM @ 60 HZ |
| Voltage @ Frequency | 230.0 V @ 60 HZ 460.0 V @ 60 HZ |
| Agency Approvals | CSA EEV |
| Ambient Temperature | 40 °C |
| Auxillary Box | No Auxillary Box |
| Base Indicator | Rigid |
| Bearing Grease Type | Polyrex EM (-20F +300F) |
| Current @ Voltage | 136.000 A @ 230.0 V 68.000 A @ 460.0 V |
| Design Code | B |
| Drip Cover | No Drip Cover |
| Duty Rating | CONT |
| Efficiency @ 100% Load | 95.0 % |
| Feedback Device | NO FEEDBACK |
| Heater Indicator | No Heater |
| High Voltage Full Load Amps | 68.0 a |
| Insulation Class | F |
| Inverter Code | Not Inverter |
| KVA Code | G |
| Lifting Lugs | Standard Lifting Lugs |
| Motor Lead Quantity/Wire Size | 3 @ 4 AWG |
| Motor Standards | NEMA |

Part detail

| | |
|--------------|------------|
| Revision | P |
| Type | AC |
| Mech. spec. | |
| Base | |
| Status | PRD/A |
| Elec. spec. | A36WG4075 |
| Layout | 617431-836 |
| Eff. date | 05-26-2023 |
| CD Diagram | CD0180 |
| Poles | 04 |
| Leads | 3#4,6#6 Y |
| Proprietary | False |
| Created date | 10-19-2010 |

| | |
|---------------------------------|--------------------|
| Motor Type | A36062M |
| Mounting Arrangement | F1 |
| Number of Poles | 4 |
| Overall Length | 29.70 IN |
| Power Factor | 87 |
| Pulley End Bearing Type | Ball |
| Pulley Face Code | Standard |
| Service Factor | 1.15 |
| Shaft Ground Indicator | No Shaft Grounding |
| Shaft Rotation | Reversible |
| Shaft Slinger Indicator | No Slinger |
| Speed | 1780 rpm |
| Speed Code | Single Speed |
| Starting Method | Direct on line |
| Thermal Device - Bearing | None |
| Thermal Device - Winding | None |

Nameplate

NP4486

| | | | | | | | | | |
|--------------------------|--------------|---------------------|--------------------------------|--------------|------------------------------|---------------|--------------------|-----------|------|
| CAT.NO. | ECTM4314T | | SPEC NO. | P36G3418 | | | | | |
| HP | 60HP | AMPS | 140/70 | VOLTS | 230/460 | DESIGN | B | | |
| FRAME | 364T | RPM | 1780 | HZ | 60 | AMB | 40 | SF | 1.15 |
| DRIVE END BEARING | 65BC03JGG30A | | PH | 3 | DUTY | CONT | INSUL.CLASS | F | |
| OPP D.E. BEARING | 65BC03JGG30A | | TYPE | P | ENCL | TEAO | CODE | G | |
| D.E.BRG.DATA | 6313 | | POWER FACTOR | 84 | NEMA NOM EFFICIENCY | 95 | | | |
| O.D.E.BRG.DATA | 6313 | | MAX CORR KVAR | 15.00 | GUARANTEED EFFICIENCY | 94.1 | | | |
| 3/4 LOAD EFF. | 95 | | NEMA NOM/CSA QUOTED EFF | | | | | | |
| SER.NO. | | MOTOR WEIGHT | 835 | | | | | | |

000901002AAA

1000 MIN FPM @ RATED HP AND SF

AIR OVER MOTOR

INV DUTY 20:1VT

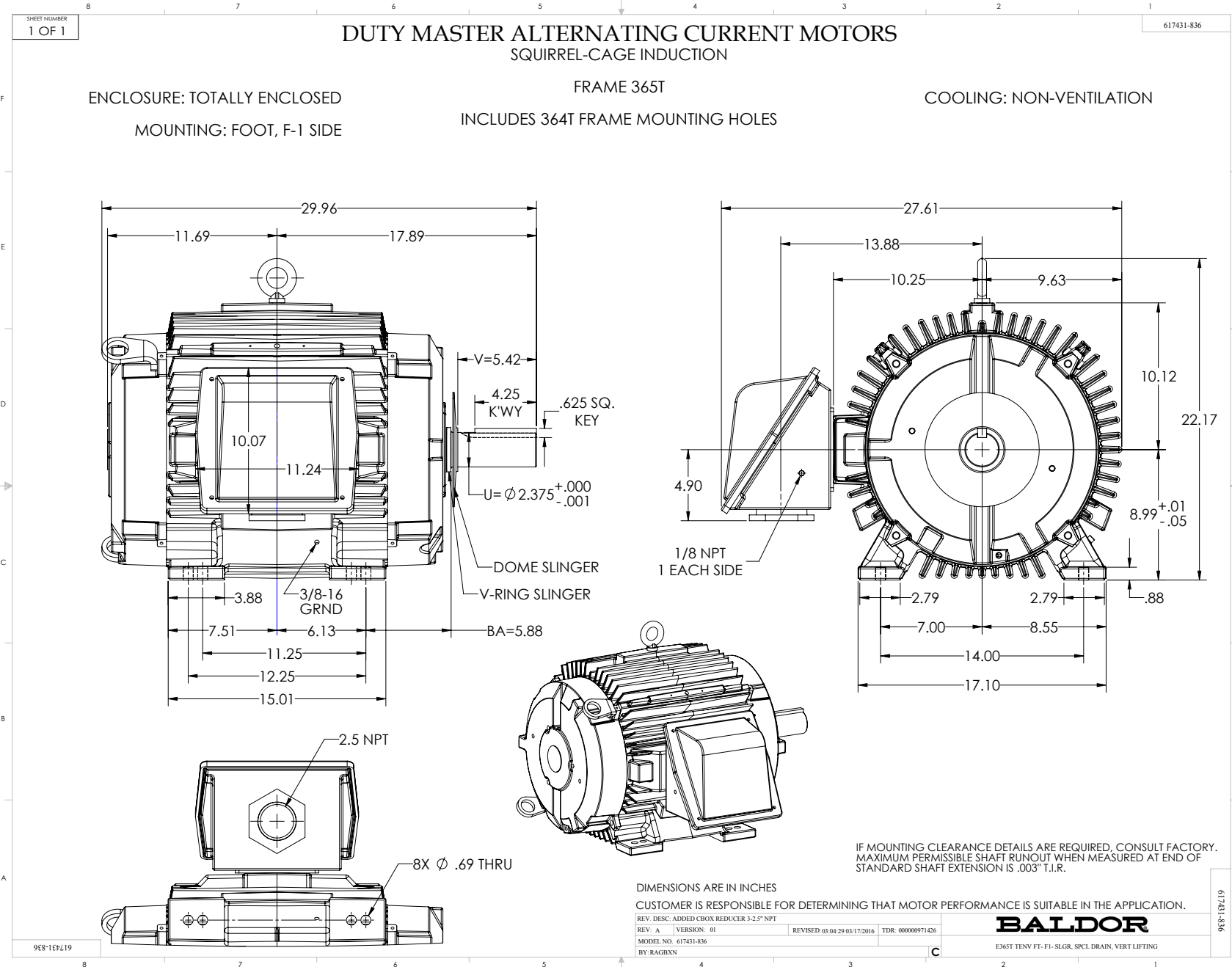
| |
|--|
| |
| |
| |
| |
| |

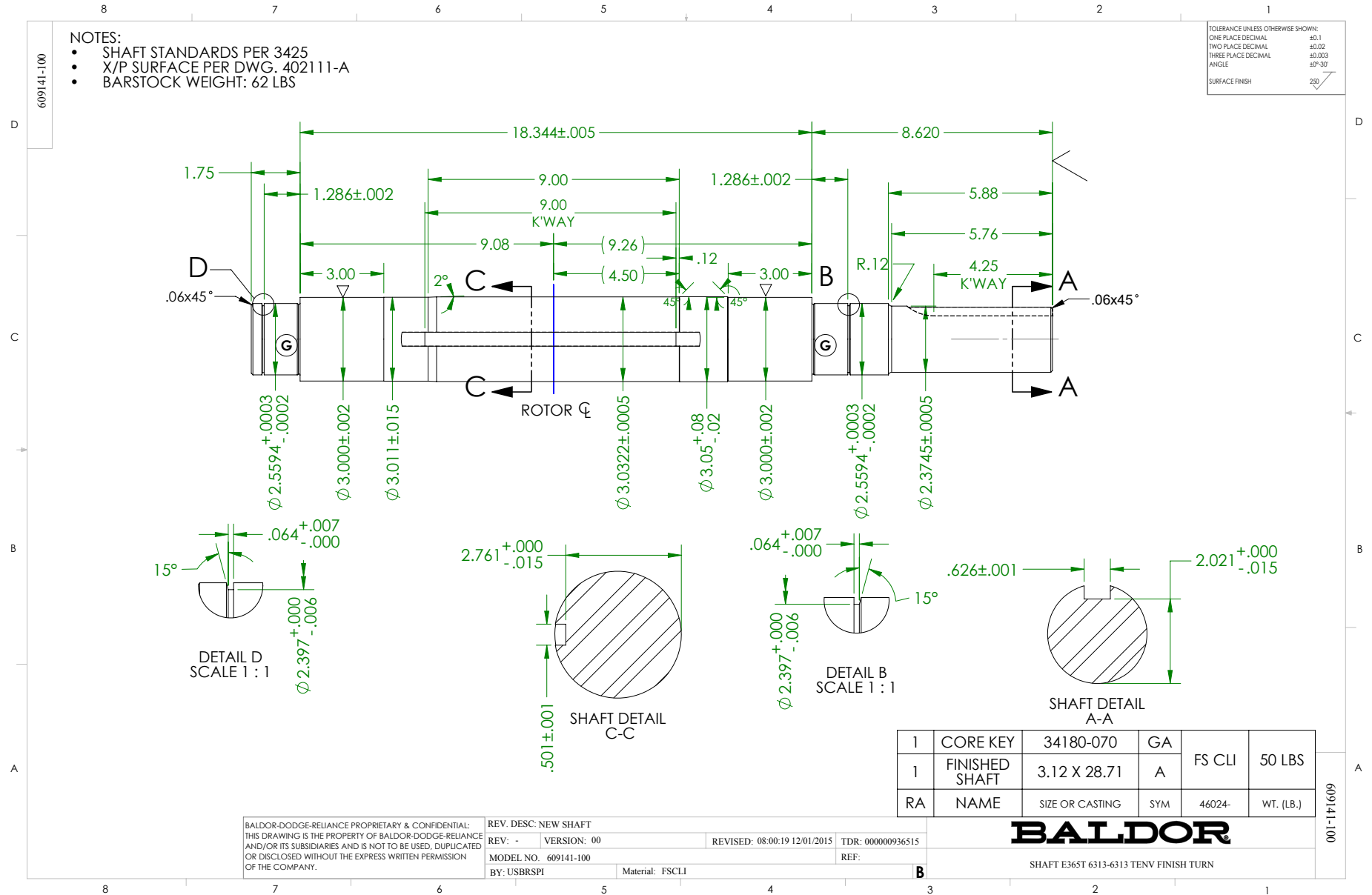
| |
|--|
| |
| |
| |
| |
| |

Parts list

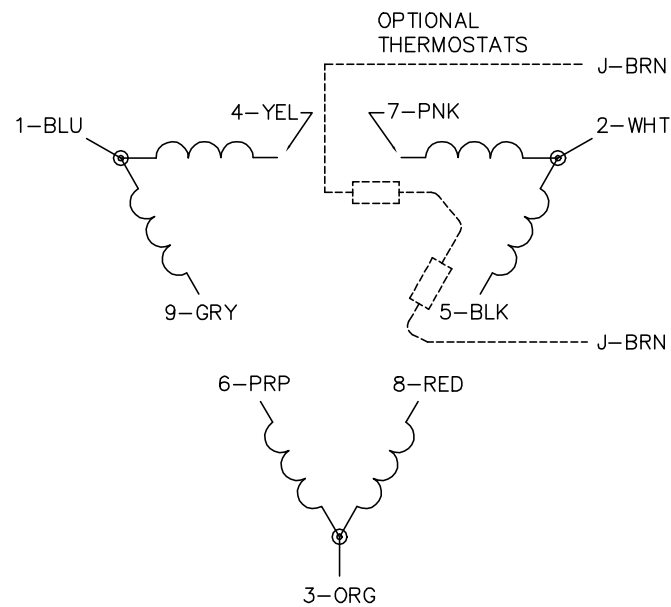
| Part number | Description | Quantity |
|--------------|--|----------|
| SA207169 | SA P36G3418 | 1.000 ea |
| RA194436 | RA P36G3418 | 1.000 ea |
| NP4486 | XEX EMBOSSED MAIN MOTOR NAMEPLATE UL W/O | 1.000 ea |
| 000692000VD | LABEL WARNING | 1.000 ea |
| 000901002AAA | N/P BLANK (RELEASE QTY 1,500) | 1.000 ea |
| 421948032 | LABEL, MYLAR | 1.000 ea |
| 004824015A | GREASE POLYREX EM | 0.544 lb |
| 032018012DK | HHCS 1/2-13X1-1/2 PLTD. 032018012DR | 2.000 ea |
| 032018016DK | HHCS 1/2-13X2L PLTD. | 2.000 ea |
| 032018024CK | HHCS 3/8-16X3 PLTD. | 3.000 ea |
| 609013022A | LUG,LIFTING | 2.000 ea |
| 032018024CK | HHCS 3/8-16X3 PLTD. | 3.000 ea |
| 034017016AE | LCKW 1/2 304 S.S. | 2.000 ea |
| 034690002AB | PPLG 1/4" PLTD. | 1.000 ea |
| 034690001AB | 1/8" NPT SQHDPLG | 1.000 ea |
| 034690001AB | 1/8" NPT SQHDPLG | 2.000 ea |
| 085922073P | BRKT 360 085922072WCC KB | 1.000 ea |
| 410700004F | WSHR | 1.000 ea |
| 412118006A | DRAIN | 1.000 ea |
| 032018012DK | HHCS 1/2-13X1-1/2 PLTD. 032018012DR | 4.000 ea |
| 034690002AB | PPLG 1/4" PLTD. | 1.000 ea |
| 034690001AB | 1/8" NPT SQHDPLG | 1.000 ea |
| 085922073X | BRKT 360 SPECIAL DRAIN & LIP SEAL | 1.000 ea |
| 034690001AB | 1/8" NPT SQHDPLG | 2.000 ea |
| 415028001AH | SEAL 360/400 | 1.000 ea |
| 415045002E | SLGR | 1.000 ea |
| HW4600G56 | DOME SLINGER, 7.875 OD X 2.370/2.300 ID | 1.000 ea |
| 412118006A | DRAIN | 1.000 ea |
| 423709011C | WASHER | 3.000 ea |
| 032018010CK | HHCS 3/8-16X1-1/4 PLTD. 032018010CR | 4.000 ea |
| 033512008LB | HHTTS 1/4-20X1 PLATED | 4.000 ea |

| | | |
|-------------|--|----------|
| 034000014AB | WSH ID.406 OD.812 TH.065 | 4.000 ea |
| 034600035AA | BUSH 3 TO 2-1/2 BLACK | 1.000 ea |
| 034690001AB | 1/8" NPT SQHDPLG | 2.000 ea |
| 048897010DG | PLUG,ODE BRKT - 360 | 1.000 ea |
| 065776000C | GASKET,MAIN CBOX, 320-400 | 1.000 ea |
| 067053000B | GASK 320-400 | 1.000 ea |
| 076708164 | CBOX E360/400 CAST IRON 076708000BB | 1.000 ea |
| 076709000A | C/B Cover - 360 | 1.000 ea |
| 415000115H | T/LUG #2AWG-4/0AWG | 1.000 ea |
| MG1025G05 | WILKOFAST, 789.227, MED. GRAY CHAR. MET. | 0.250 ga |
| 033775004EA | DRSCR #6-1/4 304 S.S. | 4.000 ea |
| 034180034HA | KEY 5/8X5/8X4-1/4 L | 1.000 ea |
| MG1500G03-5 | LACQUER PRIMER, GRAY | 0.063 ga |
| L482401016 | SPRAY AC-29-7S | 0.025 ga |
| 032509020C | CARRIAGE BOLT - 360 | 3.000 ea |
| 000692000FF | N/P | 1.000 ea |
| 14PA1000 | PACKAGING 314 GROUP COMBINED PRINT | 1.000 ea |
| 032018005DL | 1/2-13 X 5/8 SILICON BRONZE HHCS | 1.000 ea |

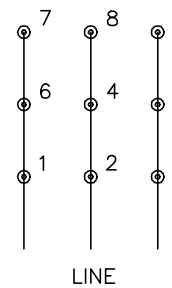




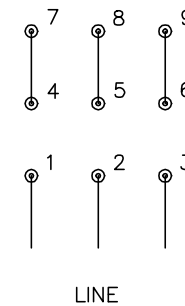
CD0180



LOW VOLTAGE
(2D)



HIGH VOLTAGE
(1D)



NOTES:

1. INTERCHANGE ANY TWO LINE LEADS TO REVERSE ROTATION.
2. OPTIONAL THERMOSTATS ARE PROVIDED WHEN SPECIFIED.
3. ACTUAL NUMBER OF INTERNAL PARALLEL CIRCUITS MAY BE A MULTIPLE OF THOSE SHOWN ABOVE.
4. LEAD COLORS ARE OPTIONAL. LEADS MUST ALWAYS BE NUMBERED AS SHOWN.

CD0180

| | | |
|-----------------------------------|------------------------------|-------------------|
| REV. DESC: ADD CLASS CONN00000007 | | |
| REV. LTR: D | VERSION: 01 | TDR: 000001099922 |
| FILE: \AAA\00005\148 | REVISED: 10:25:29 02/19/2019 | BY: ENBRIRO |
| MTL: - | © □ | |

BALDOR - RELIANCE®

3PH, DV, 9 LEADS, DELTA CONNECTION

SH 1 of 1