

BALDOR • RELIANCE

Customer information packet

EHF3311T

7.5HP, 1770RPM, 3PH, 60HZ, 213T, 3734M, OPSB, F

Class - None

Division - Not Applicable

Specifications

| | |
|--------------------------------|---|
| Enclosure | OPSB |
| Frame | 213T |
| Frame Material | Steel |
| Frequency | 60.00 Hz |
| Haz Area Class and Group | None |
| Haz Area Division | Not Applicable |
| Motor Letter Type | Three Phase |
| Output @ Frequency | 7.500 HP @ 60 HZ |
| Phase | 3 |
| Synchronous Speed @ Frequency | 1800 RPM @ 60 HZ |
| Voltage @ Frequency | 230.0 V @ 60 HZ 460.0 V @ 60 HZ |
| Agency Approvals | CSA UR |
| Ambient Temperature | 40 °C |
| Auxillary Box | No Auxillary Box |
| Auxillary Box Lead Termination | None |
| Base Indicator | Rigid |
| Bearing Grease Type | Polyrex EM (-20F +300F) |
| Blower | None |
| Current @ Voltage | 19.600 A @ 230.0 V 20.600 A @ 208.0 V 9.800 A @ 460.0 V |
| Design Code | A |
| Drip Cover | No Drip Cover |
| Duty Rating | CONT |
| Efficiency @ 100% Load | 91.0 % |
| Electrically Isolated Bearing | Not Electrically Isolated |
| Feedback Device | NO FEEDBACK |
| Front Shaft Indicator | None |
| Heater Indicator | No Heater |
| High Voltage Full Load Amps | 9.8 a |

Part detail

| | |
|--------------|------------|
| Revision | C |
| Type | AC |
| Mech. spec. | 37L724 |
| Base | |
| Status | PRD/A |
| Elec. spec. | 37WGL863 |
| Layout | 37LYL724 |
| Eff. date | 07-31-2024 |
| CD Diagram | CD0005 |
| Poles | 04 |
| Leads | 9#14 |
| Proprietary | False |
| Created date | 01-29-2021 |

| | |
|-------------------------------|-----------------------|
| Insulation Class | F |
| Inverter Code | Inverter Ready |
| KVA Code | J |
| Lifting Lugs | Standard Lifting Lugs |
| Locked Bearing Indicator | No Locked Bearing |
| Motor Lead Quantity/Wire Size | 9 @ 14 AWG |
| Motor Lead Termination | Flying Leads |
| Motor Standards | NEMA |
| Motor Type | 3734M |
| Mounting Arrangement | F2 |
| Number of Poles | 4 |
| Overall Length | 16.32 IN |
| Power Factor | 79 |
| Product Family | General Purpose |
| Pulley End Bearing Type | Ball |
| Pulley Face Code | Standard |
| Pulley Shaft Indicator | Standard |
| Rodent Screen | None |
| Service Factor | 1.15 |
| Shaft Diameter | 1.375 IN |
| Shaft Ground Indicator | No Shaft Grounding |
| Shaft Rotation | Reversible |
| Shaft Slinger Indicator | No Slinger |
| Speed | 1770 rpm |
| Speed Code | Single Speed |
| Starting Method | Direct on line |
| Thermal Device - Bearing | None |
| Thermal Device - Winding | None |
| Vibration Sensor Indicator | No Vibration Sensor |
| Winding Thermal 1 | None |
| Winding Thermal 2 | None |

Nameplate

| NP2094E06B03 | | | | | | | | | |
|---------------------|--------------|---------------|-----------------------|-------------|---|-----------|-----|--|--|
| CAT.NO. | EHFM3311T | | | | | | | | |
| SPEC. | 37L724L863G1 | | | | | | | | |
| HP | 7.5 | | | | | | | | |
| VOLTS | 230/460 | | | | | | | | |
| AMPS | 19.6/9.8 | | | | | | | | |
| RPM | 1770 | | | | | | | | |
| FRAME | 213T | | HZ | 60 | | PH | 3 | | |
| SER.F. | 1.15 | CODE | J | DES | A | CL | F | | |
| NEMA-NOM-EFF | 91 | | PF | 79 | | | | | |
| RATING | 40C AMB-CONT | | | | | | | | |
| CC | 010A | | USABLE AT 208V | | | | N/A | | |
| DE | 6307 | | ODE | 6206 | | | | | |
| AUTO | | MANUAL | | NONE | | | | | |
| ENCL | OPSB | SN | | | | | | | |
| BLANK | | | | | | | | | |

Parts list

| Part number | Description | Quantity |
|--------------|--|----------|
| SA390854 | SA 37L724L863G1 | 1.000 ea |
| RA381322 | RA 37L724L863G1 | 1.000 ea |
| HA6361A01 | LIFTING LUG FOR 37, 39 & 40 FRAME ZINC | 2.000 ea |
| 37CB3006 | 37 CB CASTING W/1.38 LEAD HOLE @ 6:00 | 1.000 ea |
| 51XW2520A10 | .25-20 X .62, TAPTITE II, HEX WSHR SLTD | 4.000 ea |
| 11XW1032G06 | 10-32 X .38, TAPTITE II, HEX WSHR SLTD U | 1.000 ea |
| 37EP3203D00 | MASTER,ODE,206 BRG,GREASER,RELIEF | 1.000 ea |
| HW4500A20 | 1/8NPT SL PIPE PLUG | 1.000 ea |
| HW4500A19 | 1/4-28X1/4 SLOTTED PLUG F/S | 1.000 ea |
| HW5100A06 | W2420-025 WVY WSHR (WB) | 1.000 ea |
| 37EP3204A00 | MASTER,DE,307 BRG,GREASER,RELIEF,AEGIS H | 1.000 ea |
| HW4500A20 | 1/8NPT SL PIPE PLUG | 1.000 ea |
| HW4500A19 | 1/4-28X1/4 SLOTTED PLUG F/S | 1.000 ea |
| 91XN0540J08 | SCREW, 5-40 X 1/2", FHC, AS | 4.000 ea |
| 91XN0632J04 | SCREW, 6-32 X 1/4", FHC, AS | 2.000 ea |
| XY3118A12 | 5/16-18 HEX NUT DIRECTIONAL SERRATION | 4.000 ea |
| 37CB4516 | LIPPED LID FOR 37 FRAME NEC KOBX | 1.000 ea |
| 51XW0832A07 | 8-32 X .44, TAPTITE II, HEX WSHR SLTD SE | 4.000 ea |
| HW2501F21 | KEY, 5/16 SQ X 2.375 | 1.000 ea |
| HA7000A02 | KEY RETAINER RING, 1 1/8 DIA, 1 3/8 DIA | 1.000 ea |
| MJ1000A02 | GREASE, POLYREX EM EXXON | 0.050 lb |
| MG1050G01 | CELEROL MEDIUM CHARCOAL METALLIC GRAY | 0.028 ga |
| 37AD2001A01 | BAFFLE PLATE, PLASTIC 0.63" WIDTH | 2.000 ea |
| HA3104A39 | THRUBOLT-5/16-18 X 12.250 | 4.000 ea |
| LC0005 | CONN.DIA.,TY M,9-LD,DUAL VOLT,REVERSING | 1.000 ea |
| NP2094E06B03 | NP LABEL W/BARCODE (PREM EFF HVAC MTR) | 1.000 ea |
| 36PA1001 | PKG GRP, PRINT PK1017A06 | 1.000 ea |
| MN416A01 | TAG-INSTAL-MAINT no wire (2500bx)4/22 | 1.000 ea |
| FE-0000001 | ZRTG FE ASSEMBLY | 1.000 ea |
| PE-0000001 | ZRTG PE ASSEMBLY | 1.000 ea |

AC Induction Motor Performance Data

Record # 85452

Preliminary Data Sheet

| Winding: 37WGL863-R001 | | Type: 3734M | Enclosure: OPSB | |
|------------------------|-----------------|---------------------|--|--------------------------|
| Nameplate Data | | | 460 V, 60 Hz: High Voltage Connection | |
| Rated Output (HP) | 7.5 | Full Load Torque | 22.2 LB-FT | |
| Volts | 230/460 | Start Configuration | direct on line | |
| Full Load Amps | 19.6/9.8 | Breakdown Torque | 74.8 LB-FT | |
| R.P.M. | 1770 | Pull-up Torque | 37.1 LB-FT | |
| Hz | 60 Phase | 3 | Locked-rotor Torque | 45.4 LB-FT |
| NEMA Design Code | A KVA Code | J | Starting Current | 72 A |
| Service Factor (S.F.) | | 1.15 | No-load Current | 4.87 A |
| NEMA Nom. Eff. | 91 Power Factor | 79 | Line-line Res. @ 25°C | 1.67 Ω |
| Rating - Duty | 40C AMB-CONT | | Temp. Rise @ Rated Load | 35°C |
| S.F. Amps | 22.0/11.0 | | Temp. Rise @ S.F. Load | 47°C |
| | | | Locked-rotor Power Factor | 45.8 |
| | | | Rotor inertia | 0.836 lb-ft ² |

Load Characteristics 460 V, 60 Hz, 7.5 HP

| % of Rated Load | 25 | 50 | 75 | 100 | 125 | 150 | S.F. |
|-----------------|------|------|------|------|------|------|------|
| Power Factor | 39 | 60 | 73 | 79 | 82 | 83 | 81 |
| Efficiency | 85 | 90.1 | 91.1 | 90.9 | 90.1 | 89 | 90.3 |
| Speed | 1793 | 1786 | 1779 | 1772 | 1764 | 1755 | 1766 |
| Line amperes | 5.34 | 6.47 | 7.99 | 9.87 | 11.9 | 14.2 | 11.1 |

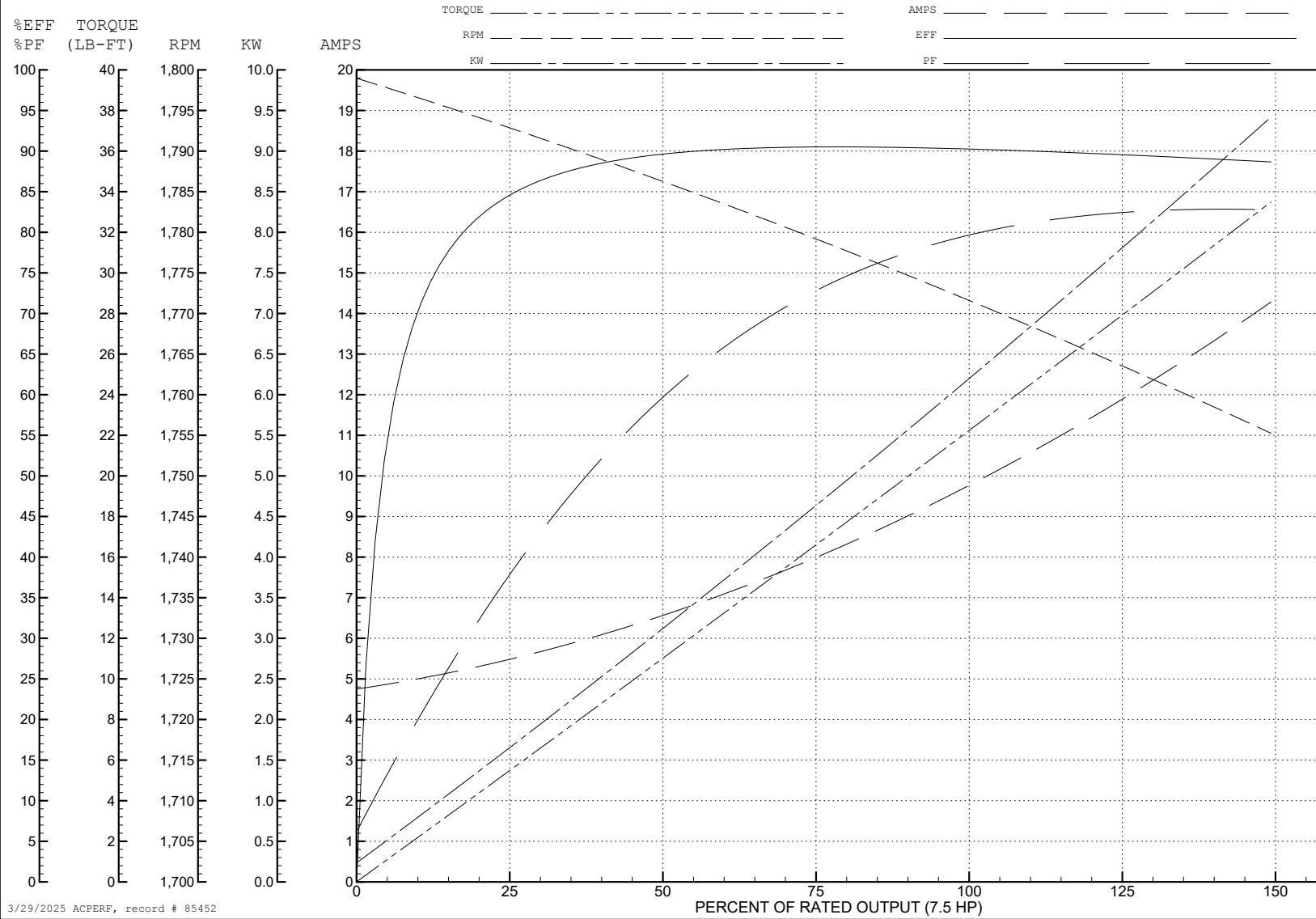
ABB Motors and Mechanical Inc.

WINDING # 37WGL863

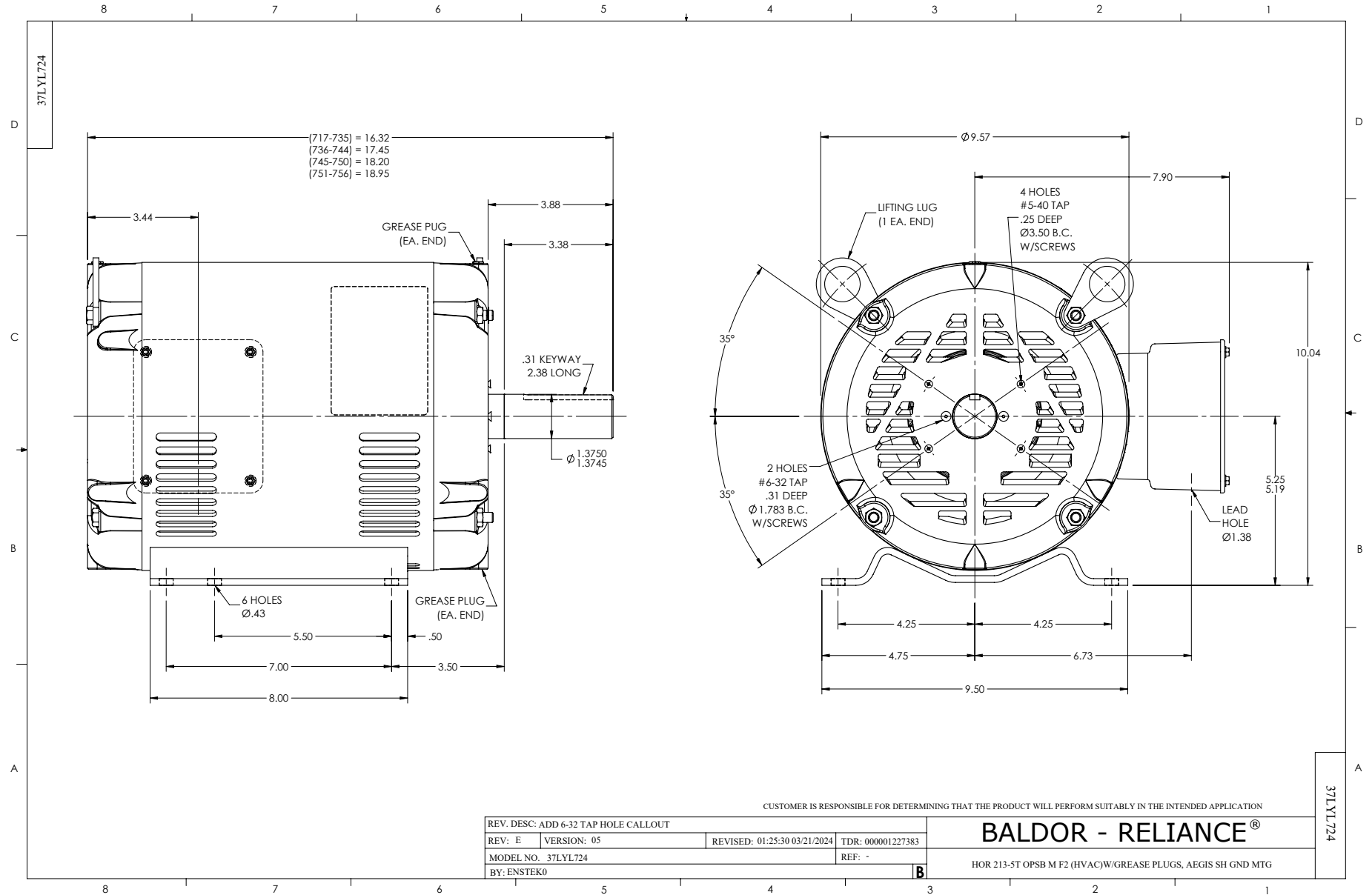
Typical performance - not guaranteed values.

7.5 HP 3 PH 60 HZ 1770 RPM 460 V 3734M

TORQUES (LB-FT): PO=74.8 PU=37.1 LR=45.4 LRA=72



3/29/2025 ACPERF, record # 85452



CD0005



LOW VOLTAGE
(2Y)



LINE

HIGH VOLTAGE
(1Y)



LINE

NOTES:

1. INTERCHANGE ANY TWO LINE LEADS TO REVERSE ROTATION.
2. OPTIONAL THERMOSTATS ARE PROVIDED WHEN SPECIFIED.
3. ACTUAL NUMBER OF INTERNAL PARALLEL CIRCUITS MAY BE A MULTIPLE OF THOSE SHOWN ABOVE.
4. LEAD COLORS ARE OPTIONAL. LEADS MUST ALWAYS BE NUMBERED AS SHOWN.

CD0005

| | | | |
|---|---------|-------------------------|--------------|
| REV. DESC: REVISE TO SHOW OPTIONAL COLORS | | | |
| REV. LTR: E | BY: JLP | REVISED: 01/19/99 10:15 | TDR: 0171435 |
| S00000 | | FILE: AAA00005140 | MDL: - |
| | | MTL: - | |

BALDOR ELECTRIC Co.

3PH, DV, 9 LEADS