

BALDOR • RELIANCE

Customer information packet

EHM2536T

30HP, 1180RPM, 3PH, 60HZ, 326T, 4084M, OPSB, F1

Specifications

| | |
|--------------------------------|--|
| Enclosure | OPSB |
| Frame | 326T |
| Frame Material | Steel |
| Frequency | 60.00 Hz |
| Motor Letter Type | Three Phase |
| Output @ Frequency | 30.000 HP @ 60 HZ |
| Phase | 3 |
| Synchronous Speed @ Frequency | 1200 RPM @ 60 HZ |
| Voltage @ Frequency | 230.0 V @ 60 HZ 460.0 V @ 60 HZ |
| Agency Approvals | CSA UR |
| Ambient Temperature | 40 °C |
| Auxillary Box | No Auxillary Box |
| Auxillary Box Lead Termination | None |
| Base Indicator | Rigid |
| Bearing Grease Type | Polyrex EM (-20F +300F) |
| Blower | None |
| Current @ Voltage | 38.000 A @ 460.0 V 76.000 A @ 230.0 V 80.000 A @ 208.0 V |
| Design Code | A |
| Drip Cover | No Drip Cover |
| Duty Rating | CONT |
| Efficiency @ 100% Load | 93.6 % |
| Feedback Device | NO FEEDBACK |
| Front Face Code | Standard |
| Front Shaft Indicator | None |
| Heater Indicator | No Heater |
| High Voltage Full Load Amps | 38.0 a |
| Insulation Class | F |
| Inverter Code | Inverter Ready |

Part detail

| | |
|--------------|------------|
| Revision | J |
| Type | AC |
| Mech. spec. | 40E329 |
| Base | |
| Status | PRD/A |
| Elec. spec. | 40WGX122 |
| Layout | 40LYE329 |
| Eff. date | 07-10-2024 |
| CD Diagram | CD0005 |
| Poles | 06 |
| Leads | 9#8 |
| Proprietary | False |
| Created date | 10-21-2013 |

| | |
|--------------------------------------|--------------------------|
| KVA Code | H |
| Lifting Lugs | Standard Lifting Lugs |
| Locked Bearing Indicator | No Locked Bearing |
| Motor Lead Exit | Ko Box |
| Motor Lead Quantity/Wire Size | 9 @ 8 AWG |
| Motor Lead Termination | Flying Leads |
| Motor Standards | NEMA |
| Motor Type | 4084M |
| Mounting Arrangement | F1 |
| Number of Poles | 6 |
| Overall Length | 28.69 IN |
| Power Factor | 79 |
| Product Family | General Purpose |
| Pulley End Bearing Type | Ball |
| Pulley Face Code | Standard |
| Pulley Shaft Indicator | Standard |
| Rodent Screen | None |
| Service Factor | 1.15 |
| Shaft Diameter | 2.125 IN |
| Shaft Extension Location | Pulley End |
| Shaft Ground Indicator | Mounting Provisions Only |
| Shaft Rotation | Reversible |
| Shaft Slinger Indicator | No Slinger |
| Speed | 1180 rpm |
| Speed Code | Single Speed |
| Starting Method | Direct on line |
| Thermal Device - Bearing | None |
| Thermal Device - Winding | None |
| Vibration Sensor Indicator | No Vibration Sensor |

Nameplate

| NP2094E06B03 | | | | | | | | | |
|---------------------|--------------|-----------------------|------|-------------|---|-----------|-----|--|--|
| CAT.NO. | EHM2536T | | | | | | | | |
| SPEC. | 40E329X122G1 | | | | | | | | |
| HP | 30 | | | | | | | | |
| VOLTS | 230/460 | | | | | | | | |
| AMPS | 78/39 | | | | | | | | |
| RPM | 1180 | | | | | | | | |
| FRAME | 326T | HZ | 60 | PH | 3 | | | | |
| SER.F. | 1.15 | CODE | H | DES | A | CL | F | | |
| NEMA-NOM-EFF | 93.6 | PF | 77 | | | | | | |
| RATING | 40C AMB-CONT | | | | | | | | |
| CC | 010A | USABLE AT 208V | | | | | N/A | | |
| DE | 6312 | ODE | 6309 | | | | | | |
| AUTO | | MANUAL | | NONE | | | | | |
| ENCL | OPSB | SN | | | | | | | |
| BLANK | | | | | | | | | |

Parts list

| Part number | Description | Quantity |
|--------------|--|----------|
| SA271174 | SA 40E329X122G1 | 1.000 ea |
| RA257804 | RA 40E329X122G1 | 1.000 ea |
| HA6361A01 | LIFTING LUG FOR 37, 39 & 40 FRAME ZINC | 2.000 ea |
| HA6017 | CAST ADAPTER, 40,42 KOBX | 1.000 ea |
| 19XW3118A12 | .31-18 X .75 HEX WASHER HEAD TAPTITE II | 2.000 ea |
| HW1001A31 | LOCKWASHER 5/16, ZINC PLT.591 OD, .319 I | 2.000 ea |
| WD1000B25 | GND LUG, BURNDY L125HP OR T&B L125HP-BB | 1.000 ea |
| 19XW3118G08 | .31-18X.50,HEX WSHR HD,TAPTITE 2,GREEN | 1.000 ea |
| HW1001A31 | LOCKWASHER 5/16, ZINC PLT.591 OD, .319 I | 2.000 ea |
| 10CB3001 | CONDUIT BOX CAST W/2.500 LEAD HOLE | 1.000 ea |
| 19XW3118A12 | .31-18 X .75 HEX WASHER HEAD TAPTITE II | 2.000 ea |
| 40EP3200A02 | STD FREP OPEN 309 BRG | 1.000 ea |
| HW5100A11 | W3917-042 WVY WSHR (WB) | 1.000 ea |
| 40EP3201A09 | PU ENDPLATE, MACH - OPEN - FOR 312 BRG | 1.000 ea |
| 84XN0632J08 | #6-32 X .50 SOCK HD, BK OX | 2.000 ea |
| 84XN0540J08 | 5-40 X 1/2" SHCS, BLACK OXIDE | 2.000 ea |
| XY3816A12 | 3/8-16 FINISHED NUT W/SERRATIONS | 8.000 ea |
| 10CB3500SP | CONDUIT BOX LID, CAST | 1.000 ea |
| 51XW2520A12 | .25-20 X .75, TAPTITE II, HEX WSHR SLTD | 4.000 ea |
| HW2501H33 | KEY, 1/2 SQ X 3.875 | 1.000 ea |
| MN416A01 | TAG-INSTAL-MAINT no wire (2500bx)4/22 | 1.000 ea |
| HW4500A20 | 1/8NPT SL PIPE PLUG | 2.000 ea |
| MJ1000A02 | GREASE, POLYREX EM EXXON | 0.050 lb |
| HW4500A20 | 1/8NPT SL PIPE PLUG | 2.000 ea |
| MG1050G01 | CELEROL MEDIUM CHARCOAL METALLIC GRAY | 0.030 ga |
| HA3159A12 | THRUBOLT.38-16 X 21.50 LG, SEE ADD. DATA | 4.000 ea |
| 40AD2002A01 | LEXAN BAFFLE 40 FR OPEN | 1.000 ea |
| 40AD2002A01 | LEXAN BAFFLE 40 FR OPEN | 1.000 ea |
| LC0005 | CONN.DIA.,TY M,9-LD,DUAL VOLT,REVERSING | 1.000 ea |
| NP2094E06B03 | NP LABEL W/BARCODE (PREM EFF HVAC MTR) | 1.000 ea |
| 40PA1000 | PACKAGING GROUP | 1.000 ea |

AC Induction Motor Performance Data

Record # 66226

Typical performance - not guaranteed values

| Winding: 40WGX122-R001 | | Type: 4084M | | Enclosure: OPSB | |
|-------------------------------|--------------------------|----------------------------------|--|------------------------|--|
| Nameplate Data | | | 460 V, 60 Hz: High Voltage Connection | | |
| Rated Output (HP) | 30 | Full Load Torque | 133.3 LB-FT | | |
| Volts | 230/460 | Start Configuration | direct on line | | |
| Full Load Amps | 78/39 | Breakdown Torque | 417 LB-FT | | |
| R.P.M. | 1180 | Pull-up Torque | 187 LB-FT | | |
| Hz | 60 Phase | 3 | Locked-rotor Torque | 233 LB-FT | |
| NEMA Design Code | A KVA Code | H | Starting Current | 267 A | |
| Service Factor (S.F.) | 1.15 | No-load Current | 18.1 A | | |
| NEMA Nom. Eff. | 93.6 Power Factor | 77 | Line-line Res. @ 25°C | 0.2452 Ω | |
| Rating - Duty | 40C AMB-CONT | Temp. Rise @ Rated Load | 40°C | | |
| S.F. Amps | | Temp. Rise @ S.F. Load | 49°C | | |
| | | Locked-rotor Power Factor | 28.6 | | |

Load Characteristics 460 V, 60 Hz, 30 HP

| % of Rated Load | 25 | 50 | 75 | 100 | 125 | 150 | S.F. |
|------------------------|-----------|-----------|-----------|------------|------------|------------|-------------|
| Power Factor | 39 | 60 | 72 | 77 | 80 | 81 | 79 |
| Efficiency | 89.6 | 93.2 | 93.8 | 93.6 | 92.9 | 92.1 | 93.2 |
| Speed | 1196.1 | 1192.3 | 1188.4 | 1184.2 | 1179.4 | 1174.2 | 1181 |
| Line amperes | 20.2 | 25 | 31.5 | 39 | 47.4 | 56.7 | 44 |

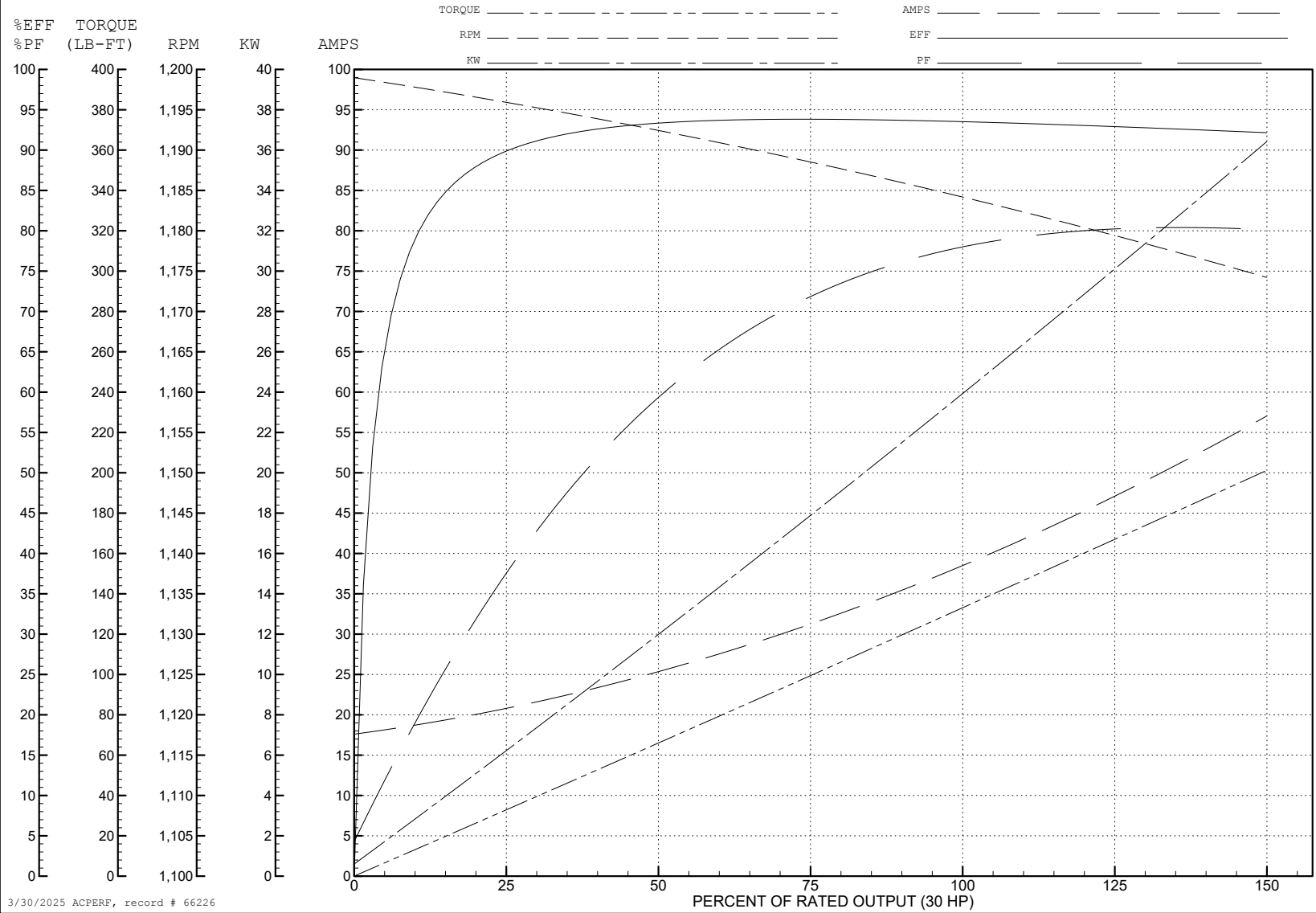
ABB Motors and Mechanical Inc.

WINDING # 40WG122

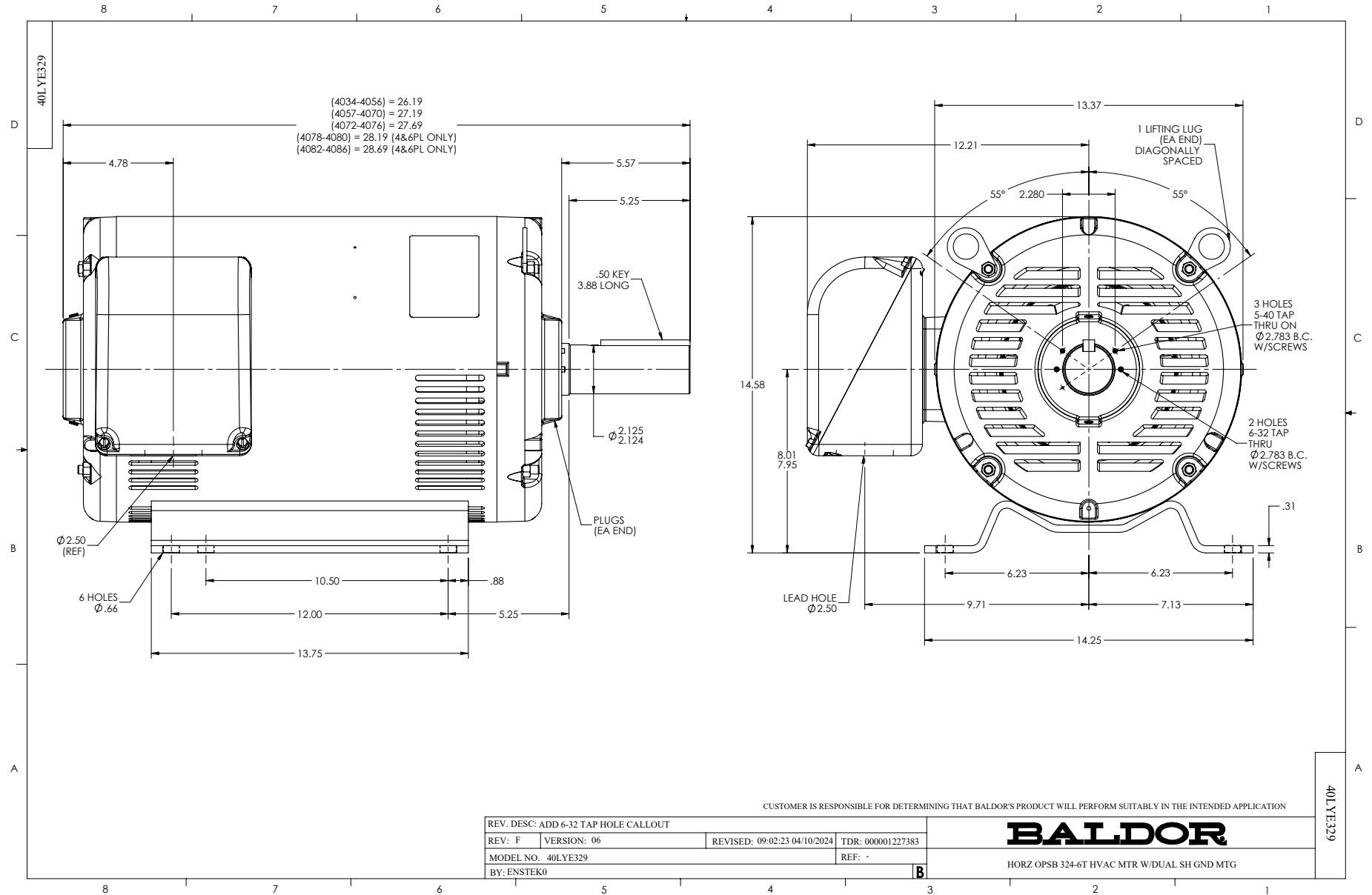
Typical performance - not guaranteed values.

30 HP 3 PH 60 HZ 1180 RPM 460 V 4084M

TORQUES (LB-FT): PO=417 PU=187 LR=233 LRA=267



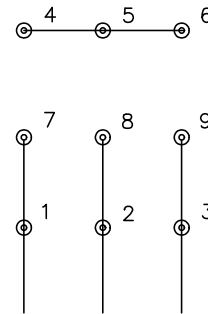
3/30/2025 ACPERF, record # 66226



CD0005

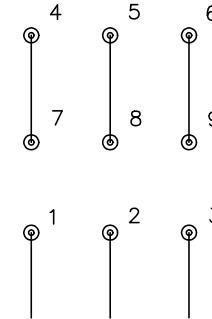


LOW VOLTAGE
(2Y)



LINE

HIGH VOLTAGE
(1Y)



LINE

NOTES:

1. INTERCHANGE ANY TWO LINE LEADS TO REVERSE ROTATION.
2. OPTIONAL THERMOSTATS ARE PROVIDED WHEN SPECIFIED.
3. ACTUAL NUMBER OF INTERNAL PARALLEL CIRCUITS MAY BE A MULTIPLE OF THOSE SHOWN ABOVE.
4. LEAD COLORS ARE OPTIONAL. LEADS MUST ALWAYS BE NUMBERED AS SHOWN.

CD0005

| | | | |
|---|---------|-------------------------|--------------|
| REV. DESC: REVISE TO SHOW OPTIONAL COLORS | | | |
| REV. LTR: E | BY: JLP | REVISED: 01/19/99 10:15 | TDR: 0171435 |
| S00000 | | FILE: AAA00005140 | MDL: - |
| | | MTL: - | |

BALDOR ELECTRIC Co.

3PH, DV, 9 LEADS