



Customer information packet

EHM3218T-8

5HP, 1750RPM, 3PH, 60HZ, 184T, 3640M, OPSB, F1

Class - None

Division - Not Applicable

Specifications

Enclosure	OPSB
Frame	184T
Frame Material	Steel
Frequency	60.00 Hz
Haz Area Class and Group	None
Haz Area Division	Not Applicable
Motor Letter Type	Three Phase
Output @ Frequency	5.000 HP @ 60 HZ
Phase	3
Synchronous Speed @ Frequency	1800 RPM @ 60 HZ
Voltage @ Frequency	200.0 V @ 60 HZ
Agency Approvals	CSA UR
Ambient Temperature	40 °C
Auxillary Box	No Auxillary Box
Auxillary Box Lead Termination	None
Base Indicator	Rigid
Bearing Grease Type	Polyrex EM (-20F +300F)
Blower	None
Current @ Voltage	15.200 A @ 200.0 V
Design Code	B
Drip Cover	No Drip Cover
Duty Rating	CONT
Efficiency @ 100% Load	89.5 %
Electrically Isolated Bearing	Not Electrically Isolated
Feedback Device	NO FEEDBACK
Front Shaft Indicator	None
Heater Indicator	No Heater
High Voltage Full Load Amps	15.2 a
Insulation Class	F
Inverter Code	Inverter Ready
KVA Code	J

Part detail

Revision	B
Type	AC
Mech. spec.	36L730
Base	
Status	PRD/A
Elec. spec.	36WGQ035
Layout	36LYL730
Eff. date	07-31-2024
CD Diagram	CD0006
Poles	04
Leads	3#14
Proprietary	False
Created date	12-10-2020

Lifting Lugs	No Lifting Lugs
Locked Bearing Indicator	No Locked Bearing
Motor Lead Quantity/Wire Size	3 @ 14 AWG
Motor Lead Termination	Flying Leads
Motor Standards	NEMA
Motor Type	3640M
Mounting Arrangement	F1
Number of Poles	4
Overall Length	16.50 IN
Power Factor	80
Product Family	General Purpose
Pulley End Bearing Type	Ball
Pulley Face Code	Standard
Pulley Shaft Indicator	Standard
Rodent Screen	None
Service Factor	1.15
Shaft Diameter	1.125 IN
Shaft Ground Indicator	No Shaft Grounding
Shaft Rotation	Reversible
Shaft Slinger Indicator	No Slinger
Speed	1750 rpm
Speed Code	Single Speed
Starting Method	Direct on line
Thermal Device - Bearing	None
Thermal Device - Winding	None
Vibration Sensor Indicator	No Vibration Sensor
Winding Thermal 1	None
Winding Thermal 2	None

Nameplate

NP2094E06B03									
CAT.NO.	EHM3218T-8								
SPEC.	36L730Q035G1								
HP	5								
VOLTS	200								
AMPS	15.2								
RPM	1750								
FRAME	184T		HZ	60		PH	3		
SER.F.	1.15	CODE	J	DES	B	CL	F		
NEMA-NOM-EFF	89.5	PF	80						
RATING	40C AMB-CONT								
CC	010A		USABLE AT 208V				N/A		
DE	6206	ODE	6205						
AUTO	N	MANUAL	N	NONE	Y				
ENCL	OPSB	SN							
BLANK									

Parts list

Part number	Description	Quantity
SA388586	SA 36L730Q035G1	1.000 ea
RA378953	RA 36L730Q035G1	1.000 ea
HA6362ZP	LIFTING LUG FOR 36 FRAME MOTORS.	2.000 ea
36CB3004	36 CB CASTING W/1.09 DIA LEAD HOLE @ 6:0	1.000 ea
51XB1016A07	10-16 X 7/16 HXWSSLD SERTYB	2.000 ea
11XW1032G06	10-32 X .38, TAPTITE II, HEX WSHR SLTD U	1.000 ea
HW3001B01	BRASS CUP WASHER, FOR #10 SCREW	1.000 ea
36EP3204D00	MASTER ODE,205 BRG,GRSR,RLF	1.000 ea
HW4500A19	1/4-28X1/4 SLOTTED PLUG F/S	1.000 ea
HW4500A20	1/8NPT SL PIPE PLUG	1.000 ea
HW5100A05	WVY WSHR F/205 & 304 BRGS	1.000 ea
36EP3205A00	MASTER DE,206 BRG,1.197SH,GRSR,RLF,AEGIS	1.000 ea
91XN0540J08	SCREW, 5-40 X 1/2", FHC, AS	2.000 ea
91XN0632J04	SCREW, 6-32 X 1/4", FHC, AS	2.000 ea
HW4500A19	1/4-28X1/4 SLOTTED PLUG F/S	1.000 ea
HW4500A20	1/8NPT SL PIPE PLUG	1.000 ea
XY2520A12	1/4-20 HEX NUT, DIRECTIONAL SERRATIONS	4.000 ea
36CB4516	750LIPPED CB LID - GALVANNEAL	1.000 ea
51XW0832A07	8-32 X .44, TAPTITE II, HEX WSHR SLTD SE	4.000 ea
HW2501E16	KEY, 1/4 SQ X 1.750	1.000 ea
HA7000A02	KEY RETAINER RING, 1 1/8 DIA, 1 3/8 DIA	1.000 ea
MJ1000A02	GREASE, POLYREX EM EXXON	0.050 lb
MG1050G01	CELEROL MEDIUM CHARCOAL METALLIC GRAY	0.022 ga
HA3101A40	THRUBOLT 1/4-20 X 12.687	4.000 ea
36AD2004A01	BAFFLE PLATE,MOD 36-SLTD BAND MTRS DELTA	2.000 ea
LC0006	CONNECTION LABEL	1.000 ea
NP2094E06B03	NP LABEL W/BARCODE (PREM EFF HVAC MTR)	1.000 ea
36PA1001	PKG GRP, PRINT PK1017A06	1.000 ea
MN416A01	TAG-INSTAL-MAINT no wire (2500bx)4/22	1.000 ea
FE-0000001	ZRTG FE ASSEMBLY	1.000 ea
PE-0000001	ZRTG PE ASSEMBLY	1.000 ea

AC Induction Motor Performance Data

Record # 85776

Preliminary Data Sheet

Winding: 36WGQ035-R001		Type: 3640M		Enclosure: OPSB	
Nameplate Data			200 V, 60 Hz: Single Voltage Motor		
Rated Output (HP)	5	Full Load Torque	15 LB-FT		
Volts	200	Start Configuration	direct on line		
Full Load Amps	15.2	Breakdown Torque	48.3 LB-FT		
R.P.M.	1750	Pull-up Torque	25.4 LB-FT		
Hz	60 Phase	Locked-rotor Torque	31.4 LB-FT		
NEMA Design Code	B KVA Code	Starting Current	104 A		
Service Factor (S.F.)	1.15	No-load Current	7.16 A		
NEMA Nom. Eff.	89.5 Power Factor	Line-line Res. @ 25°C	0.518 Ω		
Rating - Duty	40C AMB-CONT	Temp. Rise @ Rated Load	43°C		
S.F. Amps	17.1	Temp. Rise @ S.F. Load	57°C		
		Locked-rotor Power Factor	48.8		
		Rotor inertia	0.372 lb-ft ²		

Load Characteristics 200 V, 60 Hz, 5 HP

% of Rated Load	25	50	75	100	125	150	S.F.
Power Factor	40	62	74	79	83	84	82
Efficiency	85.5	89.9	90.3	89.7	88.3	86.6	89
Speed	1789	1778	1766	1753	1738	1722	1745
Line amperes	7.96	9.76	12.3	15.2	18.6	22.3	17.2

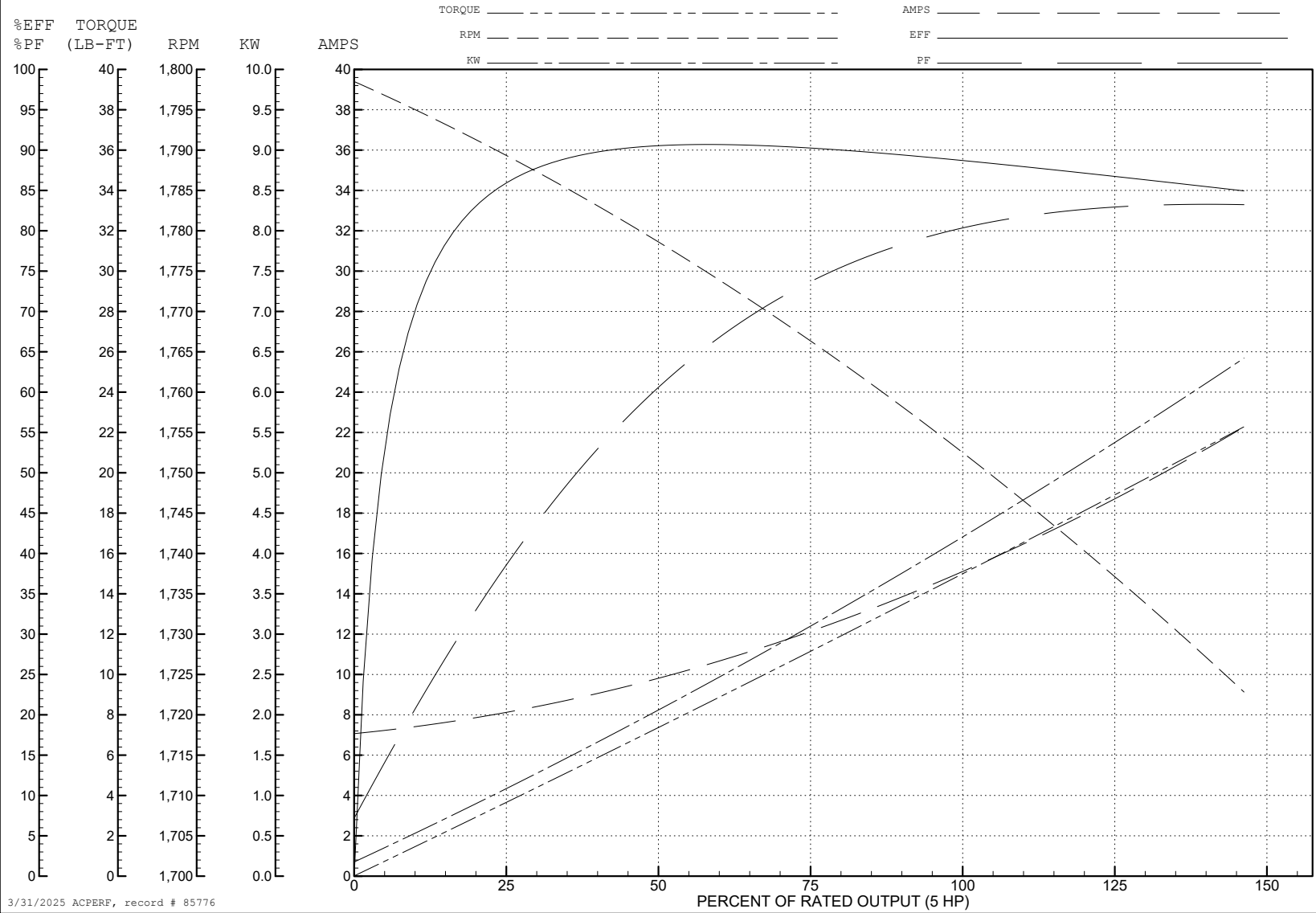
ABB Motors and Mechanical Inc.

WINDING # 36WGQ035

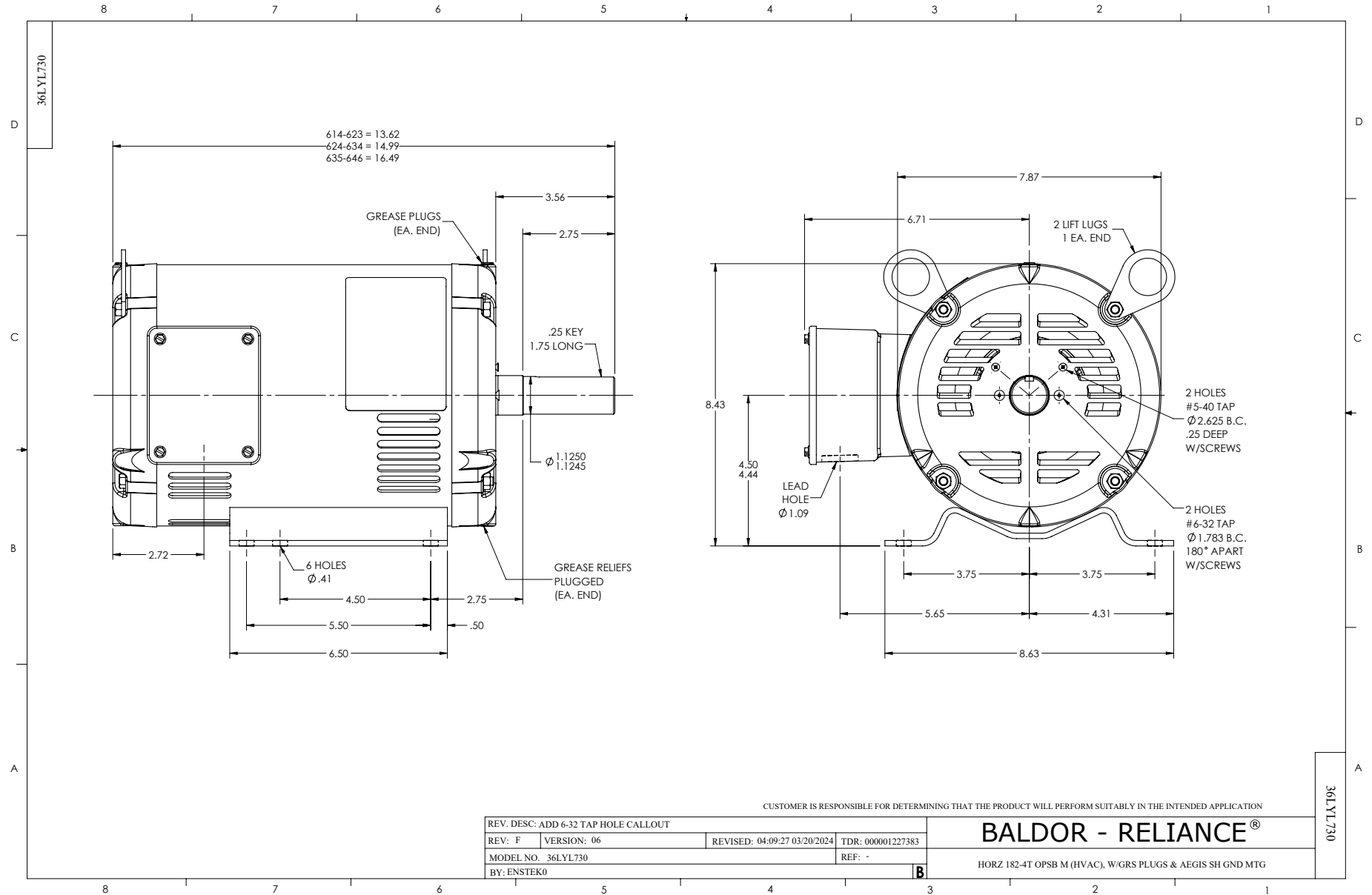
Typical performance - not guaranteed values.

5 HP 3 PH 60 HZ 1750 RPM 200 V 3640M

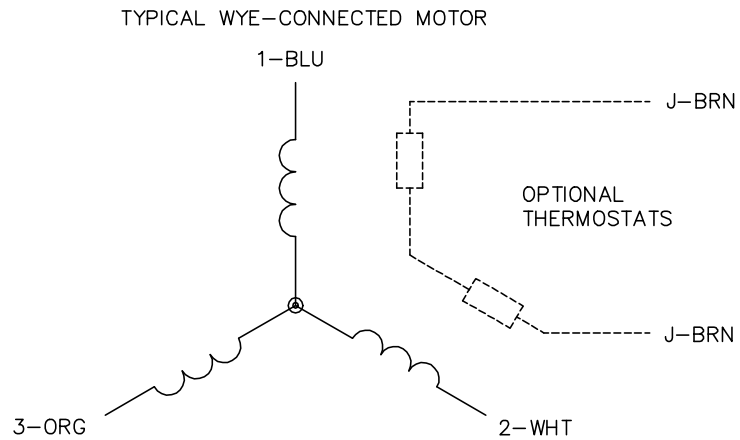
TORQUES (LB-FT): PO=48.3 PU=25.4 LR=31.4 LRA=104



3/31/2025 ACPERF, record # 85776



CD0006



NOTES:

1. THREE LEAD MOTOR MAY BE EITHER WYE CONNECTED OR DELTA CONNECTED.
2. INTERCHANGE ANY TWO LINE LEADS TO REVERSE ROTATION.
3. OPTIONAL THERMOSTATS ARE PROVIDED WHEN SPECIFIED.
4. ACTUAL NUMBER OF INTERNAL PARALLEL CIRCUITS MAY VARY.
5. LEAD COLORS ARE OPTIONAL. LEADS MUST BE NUMBERED AS SHOWN.

CD0006

REV. DESC: ADD CLASS CONN00000007		
REV. LTR: E	VERSION: 01	TDR: 000001099922
FILE: \AAA\00005\141	REVISED: 10:24:49 02/19/2019	BY: ENBRIRO
MTL: -	© □	

BALDOR - RELIANCE®

3PH, SV, 3 LEADS, WYE OR DELTA CONNECTED

SH 1 of 1