

BALDOR • RELIANCE

Customer information packet

EHM3554T

1.5HP, 1770RPM, 3PH, 60HZ, 145T, 3524M, TEFC, F

Class - None

Division - Not Applicable

Specifications

Enclosure	TEFC
Frame	145T
Frame Material	Steel
Frequency	60.00 Hz
Haz Area Class and Group	None
Haz Area Division	Not Applicable
Motor Letter Type	Three Phase
Output @ Frequency	1.500 HP @ 60 HZ
Phase	3
Synchronous Speed @ Frequency	1800 RPM @ 60 HZ
Voltage @ Frequency	230.0 V @ 60 HZ 460.0 V @ 60 HZ
Agency Approvals	CSA UR
Ambient Temperature	40 °C
Auxillary Box	No Auxillary Box
Auxillary Box Lead Termination	None
Base Indicator	Rigid
Bearing Grease Type	Polyrex EM (-20F +300F)
Blower	None
Current @ Voltage	2.000 A @ 460.0 V 4.000 A @ 230.0 V 4.500 A @ 208.0 V
Design Code	B
Drip Cover	No Drip Cover
Duty Rating	CONT
Efficiency @ 100% Load	86.5 %
Electrically Isolated Bearing	Not Electrically Isolated
Feedback Device	NO FEEDBACK
Front Shaft Indicator	None
Heater Indicator	No Heater
High Voltage Full Load Amps	2.0 a

Part detail

Revision	C
Type	AC
Mech. spec.	35Z141
Base	
Status	PRD/A
Elec. spec.	35WGL955
Layout	35LYZ141
Eff. date	06-06-2024
CD Diagram	CD0005
Poles	04
Leads	9#18
Proprietary	False
Created date	01-10-2022

Insulation Class	F
Inverter Code	Inverter Ready
KVA Code	L
Lifting Lugs	Standard Lifting Lugs
Locked Bearing Indicator	No Locked Bearing
Motor Lead Quantity/Wire Size	9 @ 18 AWG
Motor Lead Termination	Flying Leads
Motor Standards	NEMA
Motor Type	3522M
Mounting Arrangement	F1
Number of Poles	4
Overall Length	13.29 IN
Power Factor	73
Product Family	General Purpose
Pulley End Bearing Type	Ball
Pulley Face Code	Standard
Pulley Shaft Indicator	Standard
Rodent Screen	None
Service Factor	1.15
Shaft Diameter	0.875 IN
Shaft Ground Indicator	No Shaft Grounding
Shaft Rotation	Reversible
Shaft Slinger Indicator	No Slinger
Speed	1760 rpm
Speed Code	Single Speed
Starting Method	Direct on line
Thermal Device - Bearing	None
Thermal Device - Winding	None
Vibration Sensor Indicator	No Vibration Sensor
Winding Thermal 1	None
Winding Thermal 2	None

Nameplate

NP2094E06B03									
CAT.NO.	EHM3554T								
SPEC.	35Z141L955G1								
HP	1.5								
VOLTS	230/460								
AMPS	4.6/2.3								
RPM	1770								
FRAME	145T		HZ	60		PH	3		
SER.F.	1.15	CODE	M	DES	B	CL	F		
NEMA-NOM-EFF	86.5	PF	72						
RATING	40C AMB-CONT								
CC	010A		USABLE AT 208V				N/A		
DE	6205	ODE	6203						
AUTO	N	MANUAL	N	NONE	Y				
ENCL	TEFC	SN							
BLANK	SFA 4.72/2.36								

Parts list

Part number	Description	Quantity
SA402653	SA 35Z141L955G1	1.000 ea
RA393930	RA 35Z141L955G1	1.000 ea
34FN3002B01	EXTERNAL FAN, PLASTIC, .637/.639 HUB W/ 3/8-16X3/4 EYEBOLT WELDED F/S	1.000 ea
HW3200A01	3/8-16X3/4 EYEBOLT WELDED F/S	1.000 ea
NS2512A01	INSULATOR, CONDUIT BOX X	1.000 ea
35CB3009	35 CB W/1.09 DIA. LEAD HOLE @ 6:	1.000 ea
36GS1000SP	GASKET-CONDUIT BOX, .06 THICK #SV-330 LE	1.000 ea
51XB1016A07	10-16 X 7/16 HXWSSLD SERTYB	2.000 ea
11XW1032G06	10-32 X .38, TAPTITE II, HEX WSHR SLTD U	1.000 ea
35EP3122A00	MASTER ODE,203 BRG,.683SH,#26 DRN,GRSR,F	1.000 ea
HW4500A19	1/4-28X1/4 SLOTTED PLUG F/S	1.000 ea
HW5100A03	WAVY WASHER (W1543-017)	1.000 ea
35EP3123F02	F00 W/AEGIS SH GND	1.000 ea
91XN0540J08	SCREW, 5-40 X 1/2", FHC, AS	4.000 ea
91XN0632J04	SCREW, 6-32 X 1/4", FHC, AS	2.000 ea
HW4500A19	1/4-28X1/4 SLOTTED PLUG F/S	1.000 ea
XY1032A02	10-32 HEX NUT DIRECTIONAL SERRATION	4.000 ea
51XB1214A16	12-14X1.00 HXWSSLD SERTYB	1.000 ea
35FH4005A84SP	IEC FH W/GRSR, NO DIMPLES PRIMED	1.000 ea
51XW1032A06	10-32 X .38, TAPTITE II, HEX WSHR SLTD S	3.000 ea
35CB4521GX	CONDUIT BOX LID KIT **ORDER INDIV PARTS	1.000 ea
51XW0832A07	8-32 X .44, TAPTITE II, HEX WSHR SLTD SE	4.000 ea
HW2501D13	KEY, 3/16 SQ X 1.375	1.000 ea
HA7000A01	KEY RETAINER 7/8" DIA SHAFT	1.000 ea
LB1624	COMBINED WARNING LABEL, ISO/ANSI PICTOGR	1.000 ea
MJ1000A02	GREASE, POLYREX EM EXXON	0.050 lb
MG1050G01	CELEROL MEDIUM CHARCOAL METALLIC GRAY	0.017 ga
HA3100A18	THRUBOLT 10-32 X 9.250	4.000 ea
LC0005	CONN.DIA.,TY M,9-LD,DUAL VOLT,REVERSING	1.000 ea
NP2094E06B03	NP LABEL W/BARCODE (PREM EFF HVAC MTR)	1.000 ea
36PA1000	PKG GRP, PRINT PK1016A06	1.000 ea

MN416A01

TAG-INSTAL-MAINT no wire (2500bx)4/22

1.000 ea

FE-0000001

ZRTG FE ASSEMBLY

1.000 ea

AC Induction Motor Performance Data

Record # 95387

Typical performance - not guaranteed values

Winding: 35WGL955-R001		Type: 3524M		Enclosure: TEFC	
Nameplate Data			460 V, 60 Hz: High Voltage Connection		
Rated Output (HP)	1.5	Full Load Torque	4.48 LB-FT		
Volts	230/460	Start Configuration	direct on line		
Full Load Amps	4.6/2.3	Breakdown Torque	18.8 LB-FT		
R.P.M.	1770	Pull-up Torque	9.6 LB-FT		
Hz	60	Locked-rotor Torque	12.6 LB-FT		
NEMA Design Code	B	Starting Current	19.7 A		
Service Factor (S.F.)	1.15	No-load Current	1.51 A		
NEMA Nom. Eff.	86.5	Line-line Res. @ 25°C	11.8 Ω		
Rating - Duty	40C AMB-CONT	Temp. Rise @ Rated Load	48°C		
S.F. Amps	5/2.5	Temp. Rise @ S.F. Load	57°C		
		Locked-rotor Power Factor	58.4		
		Rotor inertia	0.173 lb-ft ²		

Load Characteristics 460 V, 60 Hz, 1.5 HP

% of Rated Load	25	50	75	100	125	150	S.F.
Power Factor	31	49	63	72	78	81	76
Efficiency	75.1	83.5	86	86.5	85.8	84.8	86.1
Speed	1792	1785	1777	1769	1760	1750	1764
Line amperes	1.56	1.72	1.97	2.28	2.65	3.06	2.5

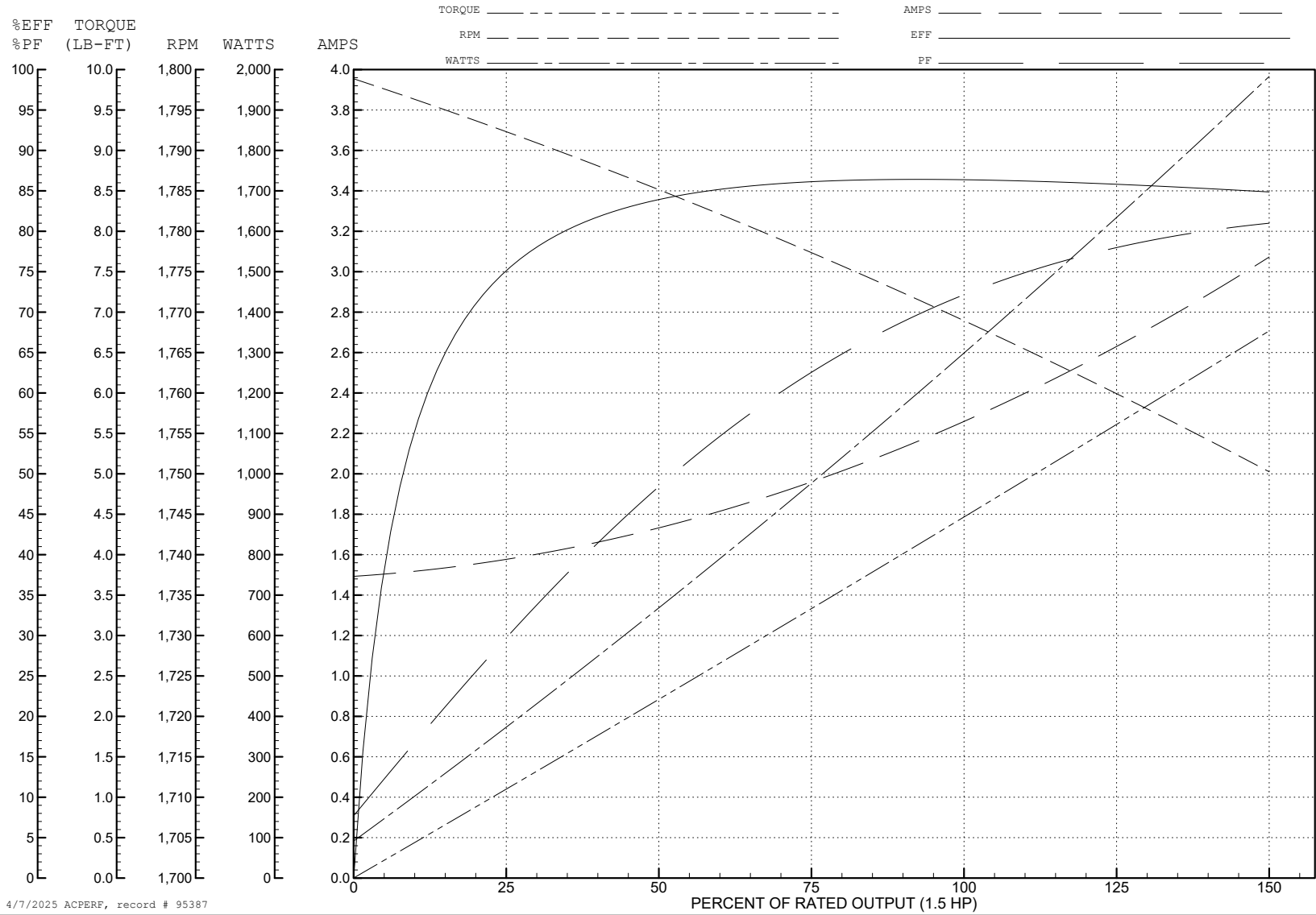
ABB Motors and Mechanical Inc.

WINDING # 35WGL955

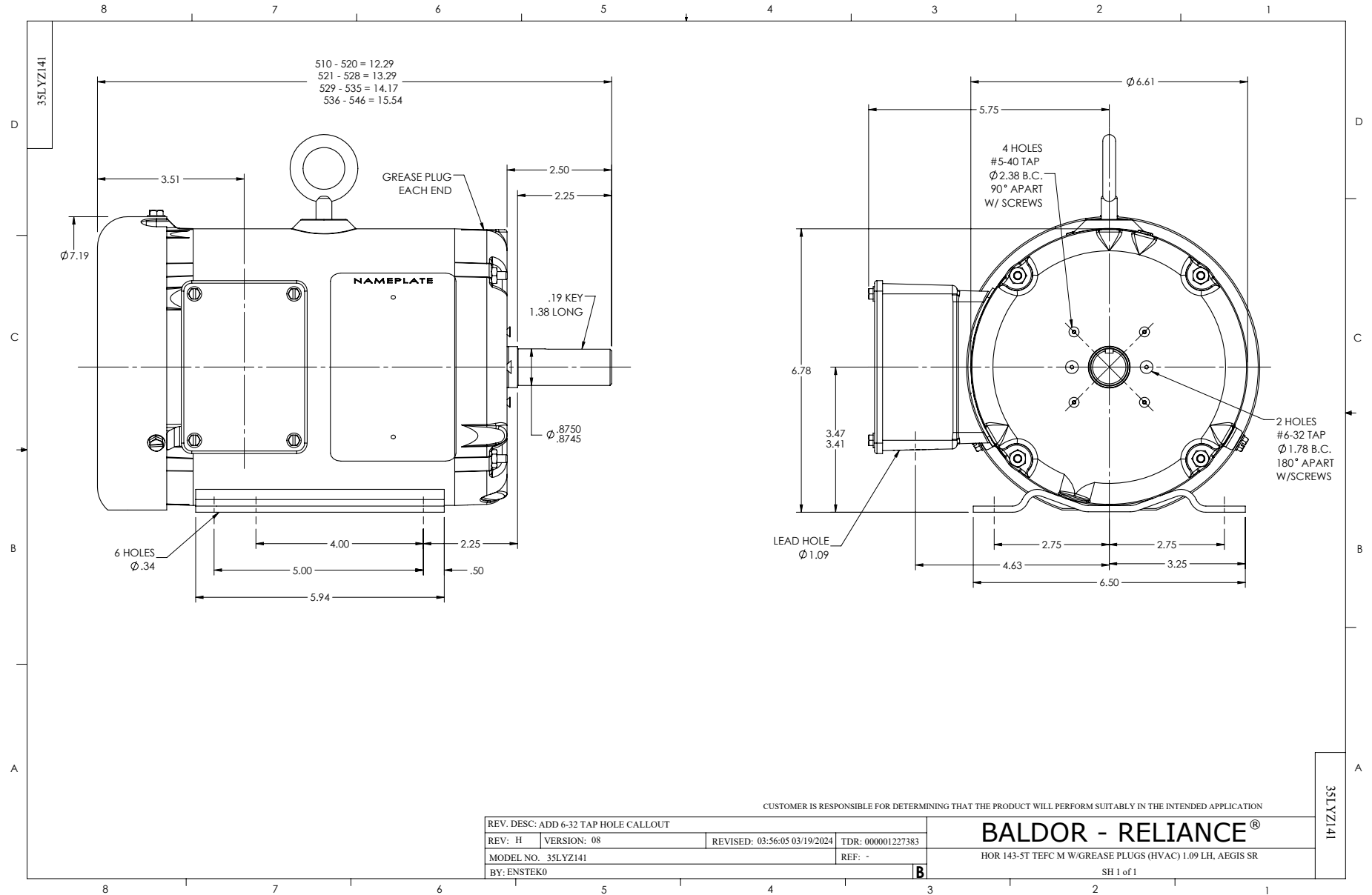
Typical performance - not guaranteed values.

1.5 HP 3 PH 60 HZ 1770 RPM 460 V 3524M

TORQUES (LB-FT): PO=18.8 PU=9.6 LR=12.6 LRA=19.7



4/7/2025 ACPERF, record # 95387



CD0005



LOW VOLTAGE
(2Y)



LINE

HIGH VOLTAGE
(1Y)



LINE

NOTES:

1. INTERCHANGE ANY TWO LINE LEADS TO REVERSE ROTATION.
2. OPTIONAL THERMOSTATS ARE PROVIDED WHEN SPECIFIED.
3. ACTUAL NUMBER OF INTERNAL PARALLEL CIRCUITS MAY BE A MULTIPLE OF THOSE SHOWN ABOVE.
4. LEAD COLORS ARE OPTIONAL. LEADS MUST ALWAYS BE NUMBERED AS SHOWN.

REV. DESC: REVISE TO SHOW OPTIONAL COLORS			
REV. LTR: E	BY: JLP	REVISED: 01/19/99 10:15	TDR: 0171435
S00000		FILE: AAA00005140	MDL: -
		MTL: -	

BALDOR ELECTRIC Co.

3PH, DV, 9 LEADS

CD0005