

BALDOR • RELIANCE

Customer information packet

EHM4104T-5

30HP, 1770RPM, 3PH, 60HZ, 286T, 1056M, TEFC, F1

Class - None

Division - Not Applicable

Specifications

Enclosure	TEFC
Frame	286T
Frame Material	Iron
Frequency	60.00 Hz
Haz Area Class and Group	None
Haz Area Division	Not Applicable
Motor Letter Type	Three Phase
Output @ Frequency	30.000 HP @ 60 HZ
Phase	3
Synchronous Speed @ Frequency	1800 RPM @ 60 HZ
Voltage @ Frequency	575.0 V @ 60 HZ
Agency Approvals	UR CSA CSA EEV
Ambient Temperature	40 °C
Auxillary Box	No Auxillary Box
Auxillary Box Lead Termination	None
Base Indicator	Rigid
Bearing Grease Type	Polyrex EM (-20F +300F)
Blower	None
Current @ Voltage	29.000 A @ 575.0 V
Design Code	A
Drip Cover	No Drip Cover
Duty Rating	CONT
Efficiency @ 100% Load	93.6 %
Electrically Isolated Bearing	Not Electrically Isolated
Feedback Device	NO FEEDBACK
Front Face Code	Standard
Front Shaft Indicator	None
Heater Indicator	No Heater
High Voltage Full Load Amps	29.0 a
Insulation Class	F

Part detail

Revision	AA
Type	AC
Mech. spec.	10H756
Base	
Status	PRD/A
Elec. spec.	10WGY759
Layout	10LYH756
Eff. date	07-10-2024
CD Diagram	CD0006
Poles	04
Leads	3#10
Proprietary	False
Created date	12-12-2011

Inverter Code	Inverter Ready
KVA Code	G
Lifting Lugs	Standard Lifting Lugs
Locked Bearing Indicator	Locked Bearing
Motor Lead Exit	Ko Box
Motor Lead Quantity/Wire Size	3 @ 10 AWG
Motor Lead Termination	Flying Leads
Motor Standards	NEMA
Motor Type	1056M
Mounting Arrangement	F1
Number of Poles	4
Overall Length	27.76 IN
Power Factor	83
Product Family	General Purpose
Pulley End Bearing Type	Ball
Pulley Face Code	Standard
Pulley Shaft Indicator	Standard
Rodent Screen	None
Service Factor	1.15
Shaft Diameter	1.875 IN
Shaft Extension Location	Pulley End
Shaft Ground Indicator	Mounting Provisions Only
Shaft Rotation	Reversible
Shaft Slinger Indicator	No Slinger
Speed	1770 rpm
Speed Code	Single Speed
Starting Method	Direct on line
Thermal Device - Bearing	NONE (OLD)
Thermal Device - Winding	None
Vibration Sensor Indicator	No Vibration Sensor
Winding Thermal 1	None
Winding Thermal 2	None

Nameplate

NP2138L

CAT.NO.	EHM4104T-5	P/N		ENCLOSURE	TEFC
SPEC.	10H756Y759G1	CC	010A	FRAME	286T
HP	30	CLASS	F	HZ	60
RPM	1770	PH	3	DES	A
VOLT	575	KVA-CODE	G	ODE BRG	6309
AMP	29	DE BRG	6311		
RATING	40C AMB-CONT	GREASE	POLYREX EM		
NEMA-NOM-EFF	93.6	PF	83	SER.F.	1.15
	SFA 32.9				
HTR-VOLTS		HTR-AMPS			

Parts list

Part number	Description	Quantity
SA235653	SA 10H756Y759G1	1.000 ea
RA222613	RA 10H756Y759G1	1.000 ea
09FN3001C02	EXTERNAL FAN, PLASTIC (COMES W/SCREW FRO	1.000 ea
10CB3000SP	KOBX, CAST W/2.00 LEAD HOLE	1.000 ea
09GS1000	GASKET-CONDUIT BOX, 1/16 THICK LEXIDE	1.000 ea
10XN3118K12	5/16-18 X .75 GRADE 5, ZINC PLATED	4.000 ea
HW1001A31	LOCKWASHER 5/16, ZINC PLT.591 OD, .319 I	4.000 ea
WD1000B25	GND LUG, BURNDY L125HP OR T&B L125HP-BB	1.000 ea
19XW3118G08	.31-18X.50,HEX WSHR HD,TAPTITE 2,GREEN	1.000 ea
10EP1106A01	FR ENDPLATE, MACH	1.000 ea
10XN3816K32	BOLT, 3/8-16X2 HH YZ(5)	4.000 ea
HW1001A38	LOCKWASHER 3/8, ZINC PLT .688 OD, .382 I	4.000 ea
HA4017A01	1/8 X 4 GREASE EXT (F/S)	1.000 ea
HW5100A11	W3917-042 WVY WSHR (WB)	1.000 ea
10XN2520K36	1/4-20 X 2.00 HX HD SCRW GRADE 5, ZINC P	2.000 ea
HW1001A25	LOCKWASHER 1/4, ZINC PLT .493 OD, .255 I	2.000 ea
10XN3118K40	5/16-18 X 2.50" HEX HD, GRADE 5	4.000 ea
HW1001A31	LOCKWASHER 5/16, ZINC PLT.591 OD, .319 I	4.000 ea
10EP1105A106	PU ENDPLATE, MACH W/1/2 SH GND MTG	1.000 ea
84XN0632J08	#6-32 X .50 SOCK HD, BK OX	2.000 ea
84XN0540J08	5-40 X 1/2" SHCS, BLACK OXIDE	3.000 ea
10XN3816K28	3/8-16 X 1.75 HEX HD CAP SCREW, GRADE 5	4.000 ea
HW1001A38	LOCKWASHER 3/8, ZINC PLT .688 OD, .382 I	4.000 ea
10FH4000	310 FAN HOUSING STAMPED	1.000 ea
51XF2520A08	SCREW, HEX SER SLT HD, ZN 1/4-20 X .50 L	4.000 ea
10CB3500SP	CONDUIT BOX LID, CAST	1.000 ea
10GS1000SP	GASKET, CONDUIT BOX LID	1.000 ea
51XW2520A12	.25-20 X .75, TAPTITE II, HEX WSHR SLTD	4.000 ea
HW2501H28	KEY, 1/2 SQ X 3.250	1.000 ea
MN416A01	TAG-INSTAL-MAINT no wire (2500bx)4/22	1.000 ea
HW4500A35	1/8 NPT STEEL HEX CAP, ZINC	1.000 ea

HW4500A20	1/8NPT SL PIPE PLUG	1.000 ea
HA4054	SHORT T-DRAIN FITTING, .125" N.P.T.	1.000 ea
MJ1000A02	GREASE, POLYREX EM EXXON	0.130 lb
HW4500A20	1/8NPT SL PIPE PLUG	2.000 ea
HA4054	SHORT T-DRAIN FITTING, .125" N.P.T.	1.000 ea
HW2500A25	WOODRUFF KEY USA #1008 #BLOW CARBON STEE	1.000 ea
MG1050G01	CELEROL MEDIUM CHARCOAL METALLIC GRAY	0.070 ga
85XU0407S04	4X1/4 U DRIVE PIN STAINLESS	4.000 ea
LB1624	COMBINED WARNING LABEL, ISO/ANSI PICTOGR	1.000 ea
LC0006	CONNECTION LABEL	1.000 ea
NP2138L	ALUM SUPER-E UL PREM CC (300	1.000 ea
10PA1000	PACKAGING GROUP COMBINED PRINT PK1023A06	1.000 ea
FE-0000022	ZRTG FE ASSEMBLY	1.000 ea

AC Induction Motor Performance Data

Record # 30991

Typical performance - not guaranteed values

Winding: 10WGY759-R001		Type: 1056M		Enclosure: TEFC	
Nameplate Data			575 V, 60 Hz: Single Voltage Motor		
Rated Output (HP)	30	Full Load Torque	89.2 LB-FT		
Volts	575	Start Configuration	direct on line		
Full Load Amps	29	Breakdown Torque	255 LB-FT		
R.P.M.	1770	Pull-up Torque	120 LB-FT		
Hz	60	Locked-rotor Torque	136 LB-FT		
NEMA Design Code	B	Starting Current	177 A		
Service Factor (S.F.)	1.15	No-load Current	11.5 A		
NEMA Nom. Eff.	93.6	Line-line Res. @ 25°C	0.375 Ω		
Rating - Duty	40C	Temp. Rise @ Rated Load	58°C		
S.F. Amps	AMB-CONT	Temp. Rise @ S.F. Load	71°C		
		Locked-rotor Power Factor	32		
		Rotor inertia	4.45 LB-FT ²		

Load Characteristics 575 V, 60 Hz, 30 HP

% of Rated Load	25	50	75	100	125	150	S.F.
Power Factor	47	69	77	84	84	83	84
Efficiency	90.9	93.9	94.4	94	92.9	92.5	93.4
Speed	1794	1786	1780	1773	1764	1754	1768
Line amperes	13.3	17.6	23.4	28.5	35.9	43.6	32.9

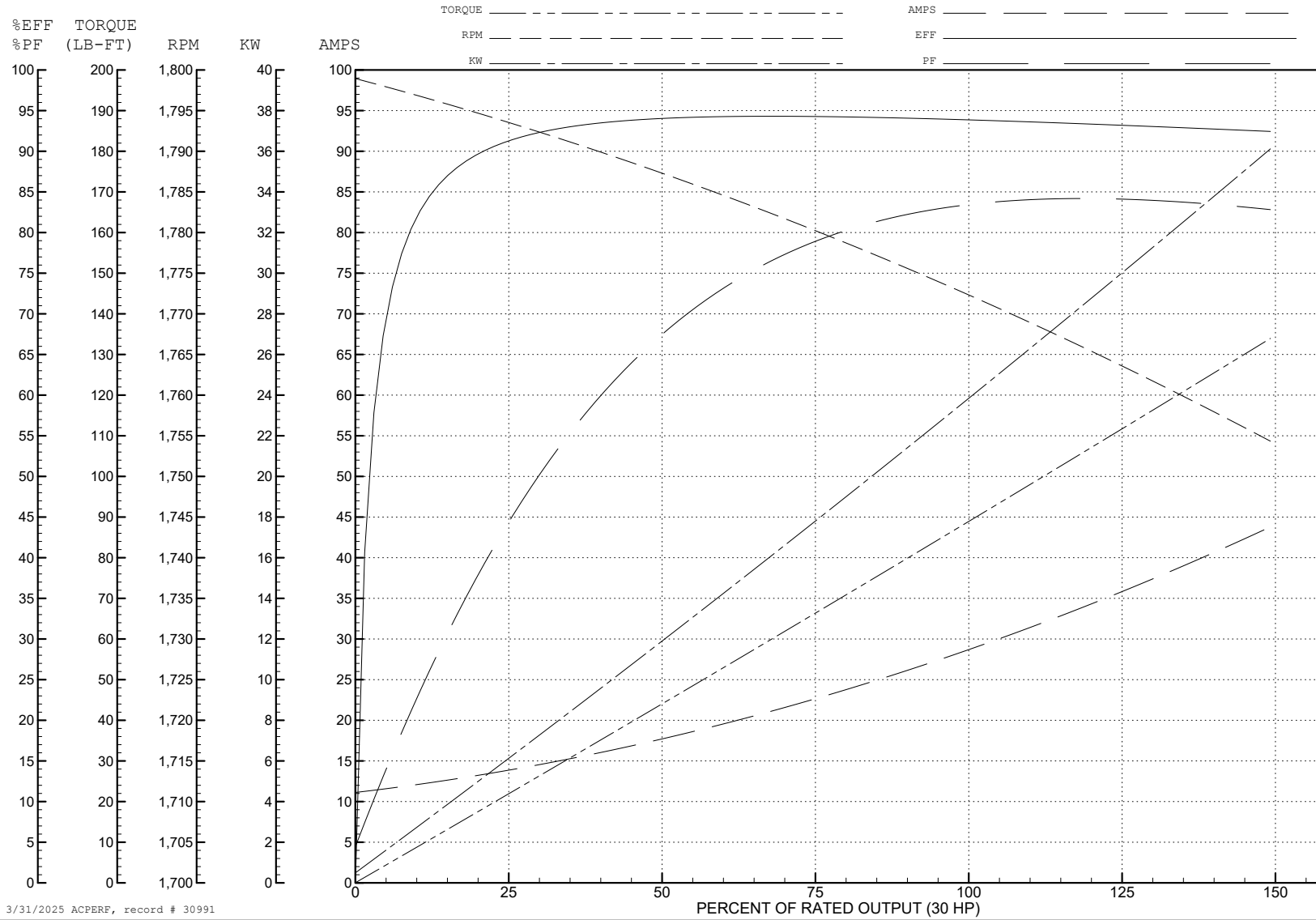
ABB Motors and Mechanical Inc.

WINDING # 10WGY759

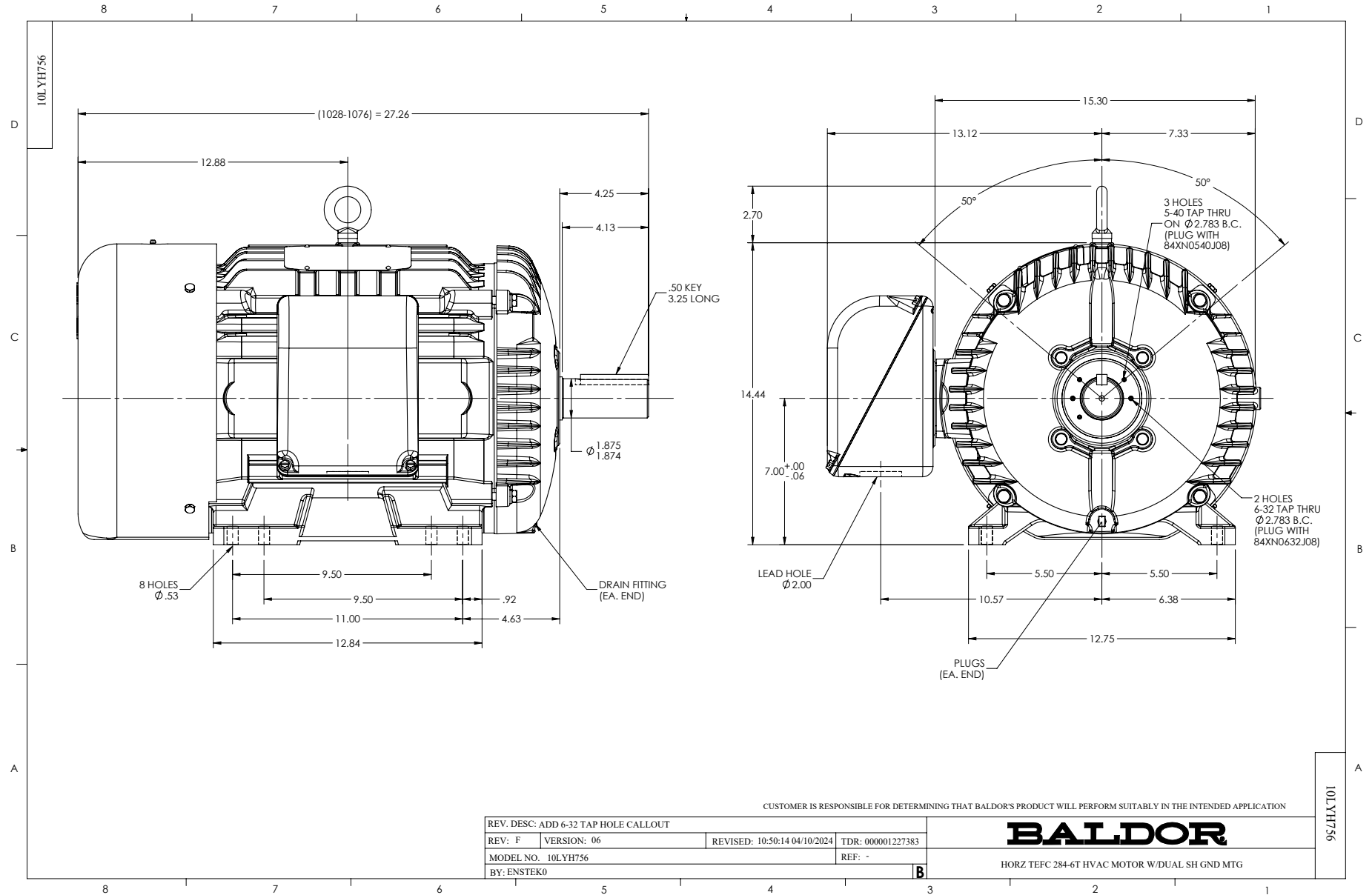
Typical performance - not guaranteed values.

30 HP 3 PH 60 HZ 1770 RPM 575 V 1056M

TORQUES (LB-FT): PO=255 PU=120 LR=136 LRA=177



3/31/2025 ACPERF, record # 30991



CD0006



NOTES:

1. THREE LEAD MOTOR MAY BE EITHER WYE CONNECTED OR DELTA CONNECTED.
2. INTERCHANGE ANY TWO LINE LEADS TO REVERSE ROTATION.
3. OPTIONAL THERMOSTATS ARE PROVIDED WHEN SPECIFIED.
4. ACTUAL NUMBER OF INTERNAL PARALLEL CIRCUITS MAY VARY.
5. LEAD COLORS ARE OPTIONAL. LEADS MUST BE NUMBERED AS SHOWN.

CD0006

REV. DESC: ADD CLASS CONN00000007		
REV. LTR: E	VERSION: 01	TDR: 000001099922
FILE: \AAA\00005\141	REVISED: 10:24:49 02/19/2019	BY: ENBRIRO
MTL: -	© □	

BALDOR - RELIANCE®

3PH, SV, 3 LEADS, WYE OR DELTA CONNECTED

SH 1 of 1