

BALDOR • RELIANCE

Customer information packet

EJMM3120T

1.5HP, 3490RPM, 3PH, 60HZ, 143JM, 3518M, OPSB

Class - None

Division - Not Applicable

Specifications

Enclosure	OPSB
Frame	143JM
Frame Material	Steel
Frequency	60.00 Hz
Haz Area Class and Group	None
Haz Area Division	Not Applicable
Motor Letter Type	Three Phase
Output @ Frequency	1.500 HP @ 60 HZ
Phase	3
Synchronous Speed @ Frequency	3600 RPM @ 60 HZ
Voltage @ Frequency	230.0 V @ 60 HZ 460.0 V @ 60 HZ
Agency Approvals	CSA CSA EEV NEMA PREMIUM UR
Ambient Temperature	40 °C
Auxillary Box	No Auxillary Box
Auxillary Box Lead Termination	None
Base Indicator	Rigid
Bearing Grease Type	Polyrex EM (-20F +300F)
Blower	None
Current @ Voltage	4.200 A @ 208.0 V 4.000 A @ 230.0 V 2.000 A @ 460.0 V
Design Code	B
Drip Cover	No Drip Cover
Duty Rating	CONT
Efficiency @ 100% Load	84.0 %
Electrically Isolated Bearing	Not Electrically Isolated
Feedback Device	NO FEEDBACK
Front Face Code	Standard

Part detail

Revision	U
Type	AC
Mech. spec.	35N833
Base	
Status	PRD/A
Elec. spec.	35WGM761
Layout	35LYN833
Eff. date	06-11-2024
CD Diagram	CD0005
Poles	02
Leads	9#18
Proprietary	False
Created date	05-28-2015

Front Shaft Indicator	None
Heater Indicator	No Heater
High Voltage Full Load Amps	2.0 a
Insulation Class	F
Inverter Code	Inverter Ready
KVA Code	L
Lifting Lugs	No Lifting Lugs
Locked Bearing Indicator	Locked Bearing
Motor Lead Exit	Ko Box
Motor Lead Quantity/Wire Size	9 @ 18 AWG
Motor Lead Termination	Flying Leads
Motor Standards	NEMA
Motor Type	3518M
Mounting Arrangement	F1
Number of Poles	2
Overall Length	13.75 IN
Power Factor	83
Product Family	General Purpose
Pulley End Bearing Type	Ball
Pulley Face Code	C-Face
Pulley Shaft Indicator	Tapped & Key
Rodent Screen	Included
RoHS Status	ROHS COMPLIANT
Service Factor	1.15
Shaft Diameter	0.875 IN
Shaft Extension Location	Pulley End
Shaft Ground Indicator	No Shaft Grounding
Shaft Rotation	Reversible
Shaft Slinger Indicator	Shaft Slinger
Speed	3490 rpm
Speed Code	Single Speed
Starting Method	Direct on line
Thermal Device - Bearing	None
Thermal Device - Winding	None

Vibration Sensor Indicator	No Vibration Sensor
Winding Thermal 1	None
Winding Thermal 2	None

Nameplate

NP3553LUA										
CAT.NO.	EJMM3120T									
SPEC.	35N833M761G2									
HP	1.5									
VOLTS	230/460									
AMPS	4/2									
RPM	3490									
FRAME	143JM		HZ	60		PH	3			
SF	1.15	CODE	L	DES	B	CLASS	F			
NEMA NOM. EFF	84	PF	83							
RATING	40C AMB-CONT									
CC	010A									
ENCL	OPSB	SN								
DE	6206	ODE	6203							
VPWM INVERTER READY										
CT30-60(2:1) VT3-60(20:1)										
USABLE AT	50HZ 1.5HP 190/380V 4.6/2.3A							SF1.0		

Parts list

Part number	Description	Quantity
SA301448	SA 35N833M761G2	1.000 ea
RA288529	RA 35N833M761G2	1.000 ea
NS2512A01	INSULATOR, CONDUIT BOX X	1.000 ea
35CB3000SP	CONDUIT BOX, CAST, W/.88 DIA. LEAD HOLE	1.000 ea
51XB1016A06	10-16X3/8 HXWSSLD SERTYB	2.000 ea
11XW1032G06	10-32 X .38, TAPTITE II, HEX WSHR SLTD U	1.000 ea
35EP3209A00	MASTER ODE,203 BRG,GRSR	1.000 ea
HW4500A01	1641B(ALEMITE)400 UNIV, GREASE FITT	1.000 ea
HA1100A03	SCREEN, RODENT	1.000 ea
51XT1032A04	10-32X1/4 HX WA SL SR TYT (F/S)	4.000 ea
HW5100A03	WAVY WASHER (W1543-017)	1.000 ea
35EP3401A03	PU ENDPLATE -OPEN W/SCREENS & GREASER W/	1.000 ea
HW4500A01	1641B(ALEMITE)400 UNIV, GREASE FITT	1.000 ea
HA1102A08	RODENT SCREEN 35 OPEN FACE MTD	1.000 ea
51XT1032A04	10-32X1/4 HX WA SL SR TYT (F/S)	4.000 ea
51XN1032A20	10-32 X 1 1/4 HX WS SL SR	2.000 ea
35CB4514	35 LIPPED CB LID	1.000 ea
51XW0832A07	8-32 X .44, TAPTITE II, HEX WSHR SLTD SE	4.000 ea
HA1005A02	SLINGER, OD 2.00, ID 1.14, 206 BRG,	1.000 ea
HW2501D13	KEY, 3/16 SQ X 1.375	1.000 ea
HA7000A01	KEY RETAINER 7/8" DIA SHAFT	1.000 ea
85XU0407S04	4X1/4 U DRIVE PIN STAINLESS	2.000 ea
HW3001B01	BRASS CUP WASHER, FOR #10 SCREW	1.000 ea
HW1000A10	#10 FLAT WASHER (SAE)	4.000 ea
MJ1000A02	GREASE, POLYREX EM EXXON	0.050 lb
MG1050Y01	CELEROL BALDOR GOLD *** NLA IN 5 GALLON	0.017 ga
HA3100A14	THRUBOLT 10-32 X 7.875	4.000 ea
35AD2005B01	BAFFLE PLATE,MOD 35-SLTD BAND MTR TDR	1.000 ea
35AD2005B01	BAFFLE PLATE,MOD 35-SLTD BAND MTR TDR	1.000 ea
MN416A01	TAG-INSTAL-MAINT no wire (2500bx)4/22	1.000 ea
LC0005E01	CONN.DIA./WARNING LABEL (LC0005/LB1119N)	1.000 ea

NP3553LUA	ALUM SUPER-E VPWM INV READY UL CC NEMA P	1.000 ea
36PA1000	PKG GRP, PRINT PK1016A06	1.000 ea
FE-0000004	ZRTG FE ASSEMBLY	1.000 ea

AC Induction Motor Performance Data

Record # 53126

Typical performance - not guaranteed values

Winding: 35WGM761-R007		Type: 3518M	Enclosure: OPSB		
Nameplate Data			460 V, 60 Hz: High Voltage Connection		
Rated Output (HP)	1.5	Full Load Torque	2.26 LB-FT		
Volts	230/460	Start Configuration	direct on line		
Full Load Amps	4/2	Breakdown Torque	9.32 LB-FT		
R.P.M.	3490	Pull-up Torque	4.18 LB-FT		
Hz	60	Phase	3	Locked-rotor Torque	6.79 LB-FT
NEMA Design Code	B	KVA Code	L	Starting Current	17.2 A
Service Factor (S.F.)	1.15	No-load Current	1.05 A		
NEMA Nom. Eff.	84	Power Factor	83	Line-line Res. @ 25°C	12.7 Ω
Rating - Duty	40C AMB-CONT		Temp. Rise @ Rated Load	24°C	
S.F. Amps			Temp. Rise @ S.F. Load	28°C	
			Locked-rotor Power Factor	64	
			Rotor inertia	0.0493 lb-ft ²	

Load Characteristics 460 V, 60 Hz, 1.5 HP

% of Rated Load	25	50	75	100	125	150	S.F.
Power Factor	43	64	77	83	87	89	85
Efficiency	73.9	82.4	85.1	85.1	84.3	83.1	84.6
Speed	3574	3550	3524	3496	3465	3430	3477
Line amperes	1.14	1.35	1.63	1.99	2.41	2.84	2.24

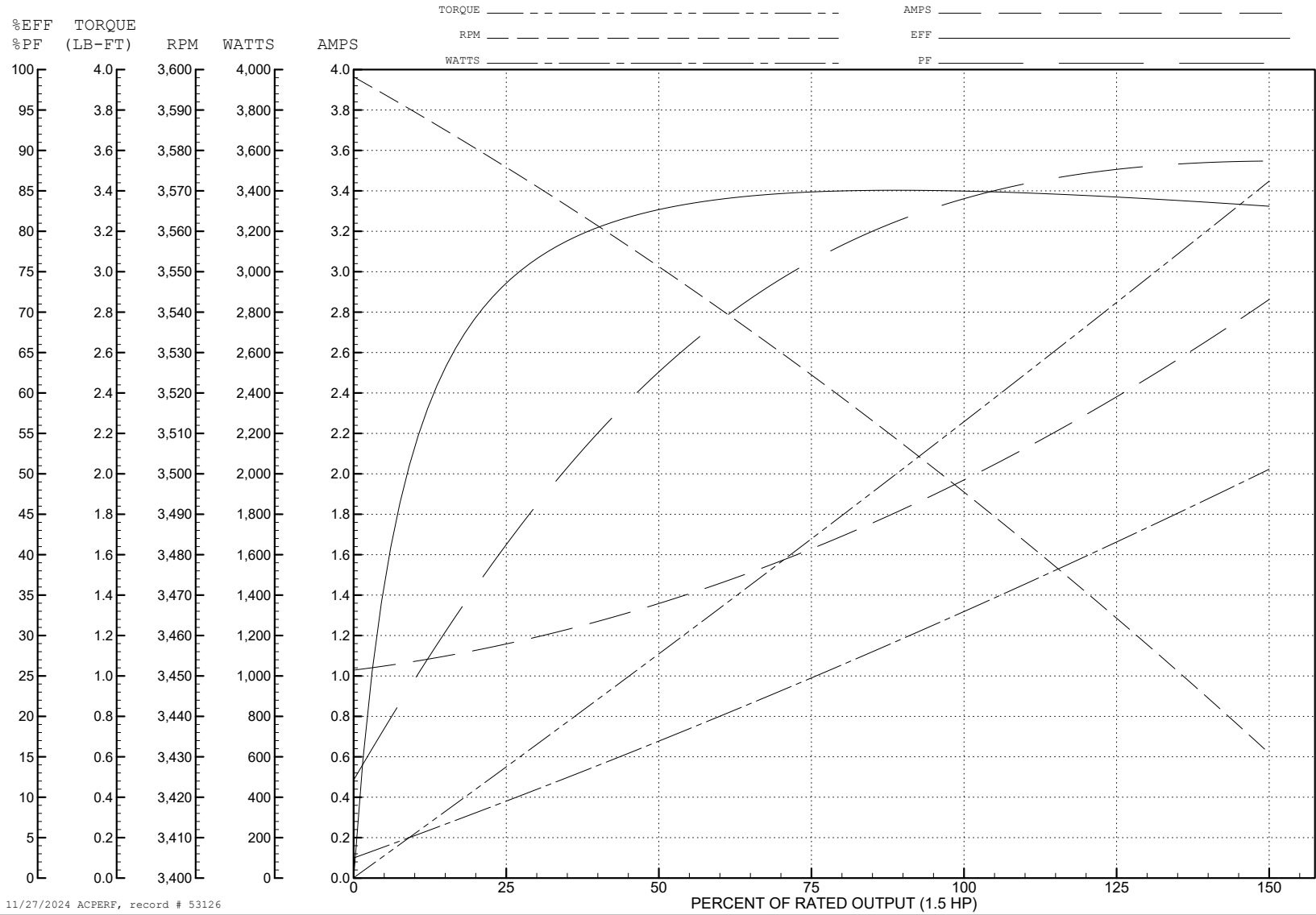
ABB Motors and Mechanical Inc.

WINDING # 35WGM761

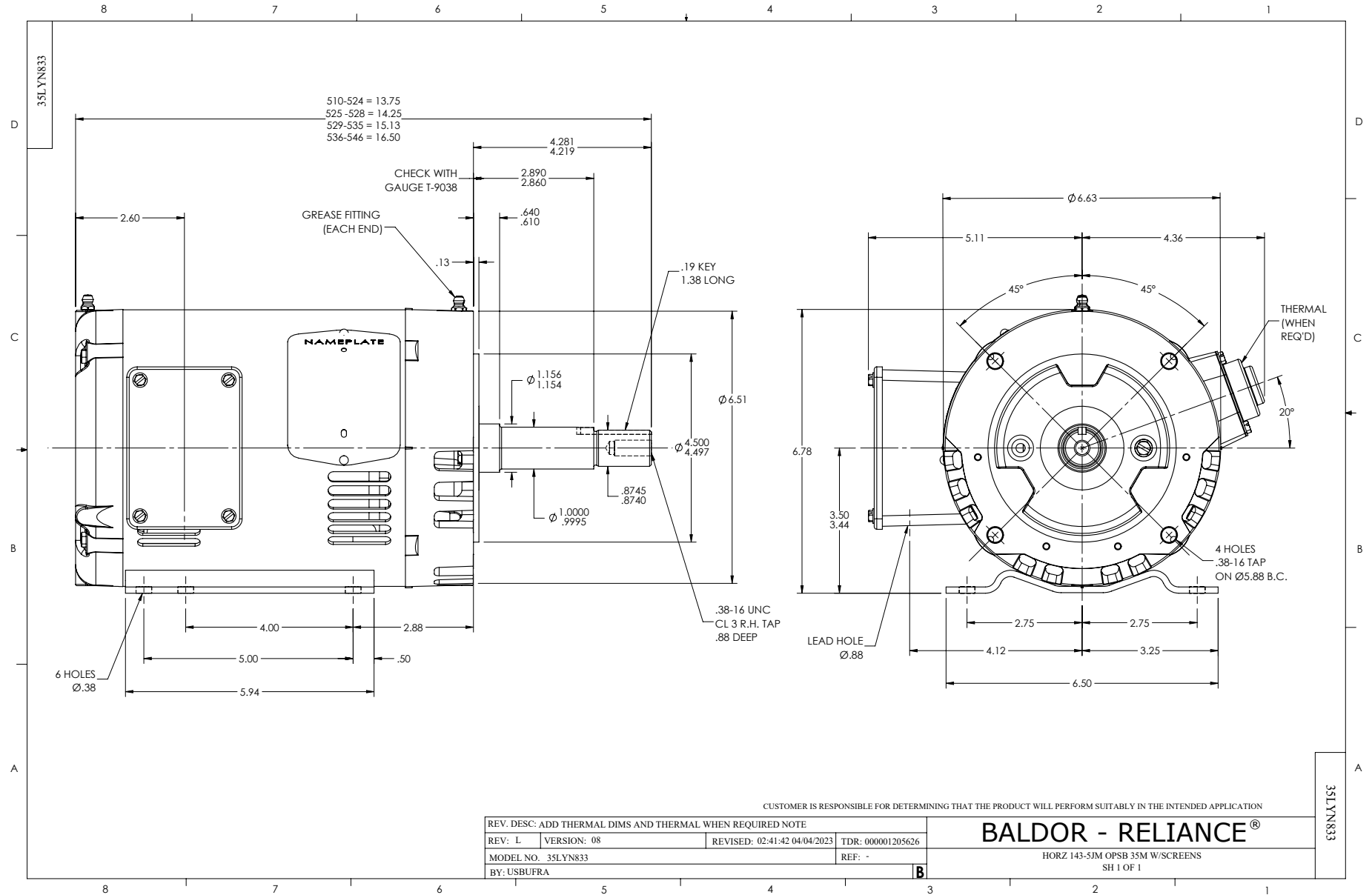
Typical performance - not guaranteed values.

1.5 HP 3 PH 60 HZ 3490 RPM 460 V 3518M

TORQUES (LB-FT): PO=9.32 PU=4.18 LR=6.79 LRA=17.2



11/27/2024 ACPERF, record # 53126



CD0005

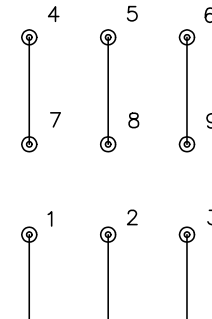


LOW VOLTAGE
(2Y)



LINE

HIGH VOLTAGE
(1Y)



LINE

NOTES:

1. INTERCHANGE ANY TWO LINE LEADS TO REVERSE ROTATION.
2. OPTIONAL THERMOSTATS ARE PROVIDED WHEN SPECIFIED.
3. ACTUAL NUMBER OF INTERNAL PARALLEL CIRCUITS MAY BE A MULTIPLE OF THOSE SHOWN ABOVE.
4. LEAD COLORS ARE OPTIONAL. LEADS MUST ALWAYS BE NUMBERED AS SHOWN.

CD0005

REV. DESC: REVISE TO SHOW OPTIONAL COLORS			
REV. LTR: E	BY: JLP	REVISED: 01/19/99 10:15	TDR: 0171435
S00000		FILE: AAA00005140	MDL: -
		MTL: -	

BALDOR ELECTRIC Co.

3PH, DV, 9 LEADS