

BALDOR • RELIANCE

Customer information packet

EJMM3211T-G

3HP, 1765RPM, 3PH, 60HZ, 182JM, 3630M, OPSB, F1

Class - None

Division - Not Applicable

Specifications

Enclosure	OPSB
Frame	182JM
Frame Material	Steel
Frequency	60.00 Hz
Haz Area Class and Group	None
Haz Area Division	Not Applicable
Motor Letter Type	Three Phase
Output @ Frequency	3.000 HP @ 60 HZ
Phase	3
Synchronous Speed @ Frequency	1800 RPM @ 60 HZ
Voltage @ Frequency	230.0 V @ 60 HZ 460.0 V @ 60 HZ
Agency Approvals	CSA EEV NEMA PREMIUM NEMA_PREMIUM UR
Ambient Temperature	40 °C
Auxillary Box	No Auxillary Box
Auxillary Box Lead Termination	None
Base Indicator	Rigid
Bearing Grease Type	Polyrex EM (-20F +300F)
Blower	None
Current @ Voltage	8.500 A @ 208.0 V 8.400 A @ 230.0 V 4.200 A @ 460.0 V
Design Code	B
Drip Cover	No Drip Cover
Duty Rating	CONT
Efficiency @ 100% Load	89.5 %
Electrically Isolated Bearing	Not Electrically Isolated
Feedback Device	NO FEEDBACK
Front Face Code	Standard

Part detail

Revision	S
Type	AC
Mech. spec.	36T140
Base	
Status	PRD/A
Elec. spec.	36WGS658
Layout	36LYT140
Eff. date	09-30-2024
CD Diagram	CD0005
Poles	04
Leads	9#16
Proprietary	False
Created date	07-28-2011

Front Shaft Indicator	None
Heater Indicator	No Heater
High Voltage Full Load Amps	4.2 a
Insulation Class	H
Inverter Code	Inverter Ready
IP Rating	NONE
KVA Code	K
Lifting Lugs	No Lifting Lugs
Locked Bearing Indicator	Locked Bearing
Motor Lead Exit	Ko Box
Motor Lead Quantity/Wire Size	9 @ 16 AWG
Motor Lead Termination	Flying Leads
Motor Standards	NEMA
Motor Type	3630M
Mounting Arrangement	F1
Number of Poles	4
Overall Length	16.50 IN
Power Factor	74
Product Family	General Purpose
Pulley End Bearing Type	Ball
Pulley Face Code	C-Face
Pulley Shaft Indicator	Tapped & Key
Rodent Screen	Included
Service Factor	1.15
Shaft Diameter	0.875 IN
Shaft Extension Location	Pulley End
Shaft Ground Indicator	Shaft Grounding
Shaft Rotation	Reversible
Shaft Slinger Indicator	Shaft Slinger
Speed	1765 rpm
Speed Code	Single Speed
Starting Method	Direct on line
Thermal Device - Bearing	None
Thermal Device - Winding	None

Vibration Sensor Indicator	No Vibration Sensor
Winding Thermal 1	None
Winding Thermal 2	None

Nameplate

NP3553LUA							
CAT.NO.	EJMM3211T-G						
SPEC.	36T140S658G1						
HP	3						
VOLTS	230/460						
AMPS	8.4/4.2						
RPM	1765						
FRAME	182JM	HZ	60	PH	3		
SF	1.15	CODE	K	DES	B	CLASS	H
NEMA NOM. EFF	89.5	PF	74				
RATING	40C AMB-CONT						
CC	010A						
ENCL	OPSB	SN					
DE	6207	ODE	6205				
VPWM INVERTER READY							
CT30-60(2:1) VT3-60(20:1)							
USABLE AT	50Hz 3HP 190/380V 9.8/4.9A						SF1.0

Parts list

Part number	Description	Quantity
SA227715	SA 36T140S658G1	1.000 ea
RA214797	RA 36T140S658G1	1.000 ea
36CB3000SP	CONDUIT BOX, CAST	1.000 ea
NS2512A01	INSULATOR, CONDUIT BOX X	1.000 ea
51XB1016A07	10-16 X 7/16 HXWSSLD SERTYB	2.000 ea
11XW1032G06	10-32 X .38, TAPTITE II, HEX WSHR SLTD U	1.000 ea
HW3001B01	BRASS CUP WASHER, FOR #10 SCREW	1.000 ea
36EP3204D00	MASTER ODE,205 BRG,GRSR,RLF	1.000 ea
HA1103A08	RODENT SCREEN, 36 FRAME, OPEN, FRONT END	1.000 ea
51XW1032A06	10-32 X .38, TAPTITE II, HEX WSHR SLTD S	4.000 ea
HW1000A10	#10 FLAT WASHER (SAE)	4.000 ea
HW1000A10	#10 FLAT WASHER (SAE)	4.000 ea
HW4500A01	1641B(ALEMITE)400 UNIV, GREASE FITT	1.000 ea
HW4500A17	317400 ALEMITE GREASE RELIEF	1.000 ea
HW5100A05	WVY WSHR F/205 & 304 BRGS	1.000 ea
10XN2520A24	1/4-20X 1 1/2 HEX HD X	4.000 ea
HW1001A25	LOCKWASHER 1/4, ZINC PLT .493 OD, .255 I	4.000 ea
36EP3405A04	PUEP 182-4C OPEN 207 BRG W/ TSLV, GRSR	1.000 ea
HA1102A07	RODENT SCREEN 36 OPEN FACE	2.000 ea
51XW1032A06	10-32 X .38, TAPTITE II, HEX WSHR SLTD S	4.000 ea
HW4500A01	1641B(ALEMITE)400 UNIV, GREASE FITT	1.000 ea
HW4500A17	317400 ALEMITE GREASE RELIEF	1.000 ea
35CB4514	35 LIPPED CB LID	1.000 ea
51XW0832A07	8-32 X .44, TAPTITE II, HEX WSHR SLTD SE	4.000 ea
HA1005A07	SLINGER, OD 2.25, ID 1.344, 307 BRG	1.000 ea
HW2501D15	KEY, 3/16 X 1.625	1.000 ea
HA7000A01	KEY RETAINER 7/8" DIA SHAFT	1.000 ea
85XU0407S04	4X1/4 U DRIVE PIN STAINLESS	2.000 ea
LB1459	AEGIS SGR LABEL "AEGISLBL-100"	1.000 ea
MJ1000A02	GREASE, POLYREX EM EXXON	0.050 lb
MG1050Y01	CELEROL BALDOR GOLD *** NLA IN 5 GALLON	0.022 ga

HA3101A25	THRUBOLT 1/4-20 X 11.000 OHIO ROD	4.000 ea
36AD2004A01	BAFFLE PLATE,MOD 36-SLTD BAND MTRS DELTA	2.000 ea
LC0005E01	CONN.DIA./WARNING LABEL (LC0005/LB1119N)	1.000 ea
NP3553LUA	ALUM SUPER-E VPWM INV READY UL CC NEMA P	1.000 ea
36PA1001	PKG GRP, PRINT PK1017A06	1.000 ea
MN416A01	TAG-INSTAL-MAINT no wire (2500bx)4/22	1.000 ea
FE-0000004	ZRTG FE ASSEMBLY	1.000 ea
PE-0000004	ZRTG PE ASSEMBLY	1.000 ea

AC Induction Motor Performance Data

Record # 35737

Typical performance - not guaranteed values

Winding: 36WGS658-R003		Type: 3630M		Enclosure: OPSB	
Nameplate Data			460 V, 60 Hz: High Voltage Connection		
Rated Output (HP)		3	Full Load Torque		8.87 LB-FT
Volts		230/460	Start Configuration		direct on line
Full Load Amps		8.4/4.2	Breakdown Torque		37.4 LB-FT
R.P.M.		1765	Pull-up Torque		17.3 LB-FT
Hz	60 Phase	3	Locked-rotor Torque		21.2 LB-FT
NEMA Design Code	B	KVA Code K	Starting Current		32.3 A
Service Factor (S.F.)		1.15	No-load Current		2.43 A
NEMA Nom. Eff.	89.5	Power Factor 74	Line-line Res. @ 25°C		3.78 Ω
Rating - Duty		40C AMB-CONT	Temp. Rise @ Rated Load		24°C
S.F. Amps			Temp. Rise @ S.F. Load		29°C
			Locked-rotor Power Factor		43
			Rotor inertia		0.279 LB-FT ²

Load Characteristics 460 V, 60 Hz, 3 HP

% of Rated Load	25	50	75	100	125	150	S.F.
Power Factor	33	53	66	73	79	81	77
Efficiency	80.1	87.6	89.6	89.9	89.7	88.5	89.8
Speed	1791	1783	1775	1766	1756	1745	1760
Line amperes	2.6	2.99	3.54	4.25	4.97	5.83	4.68

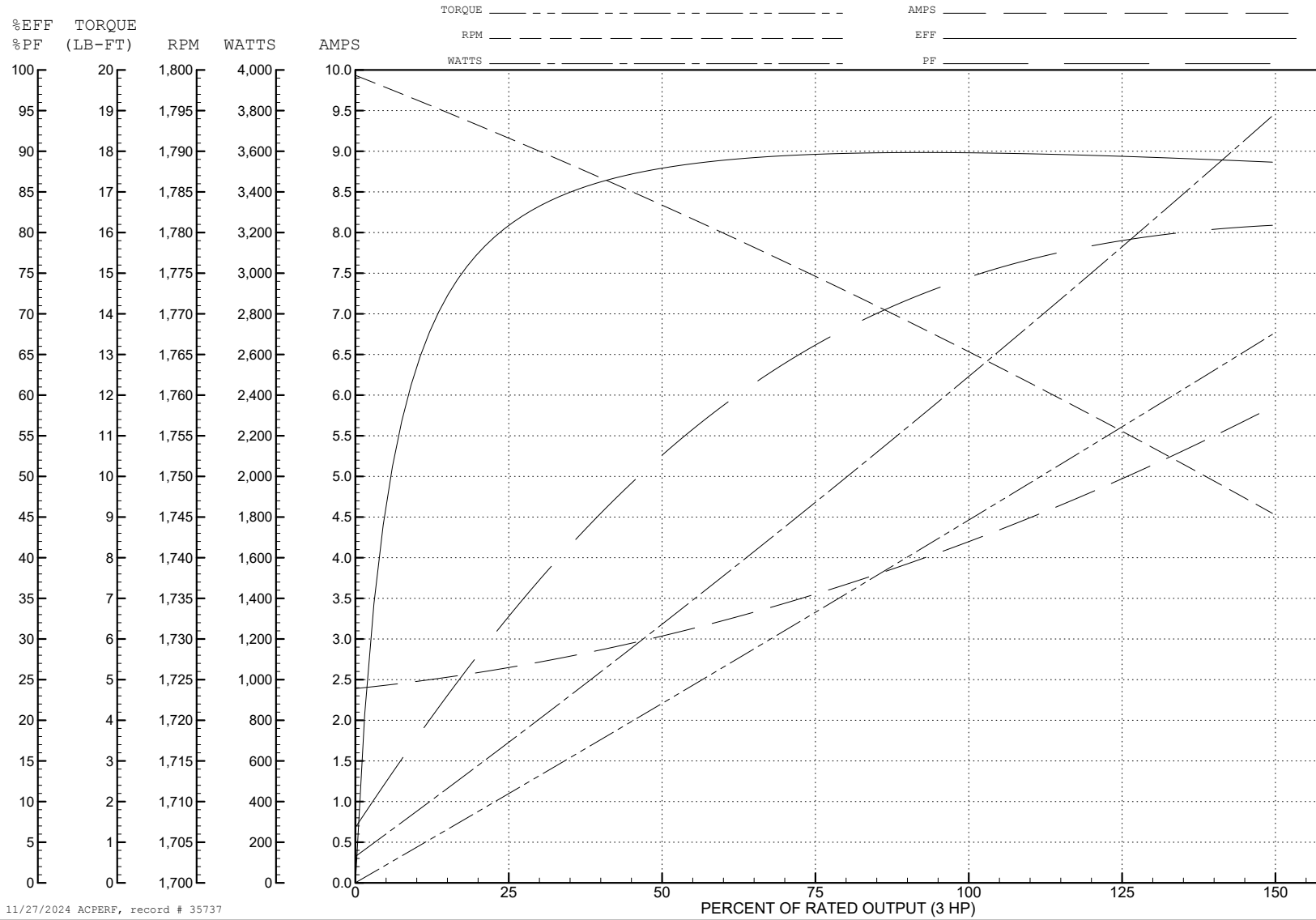
ABB Motors and Mechanical Inc.

WINDING # 36WGS658

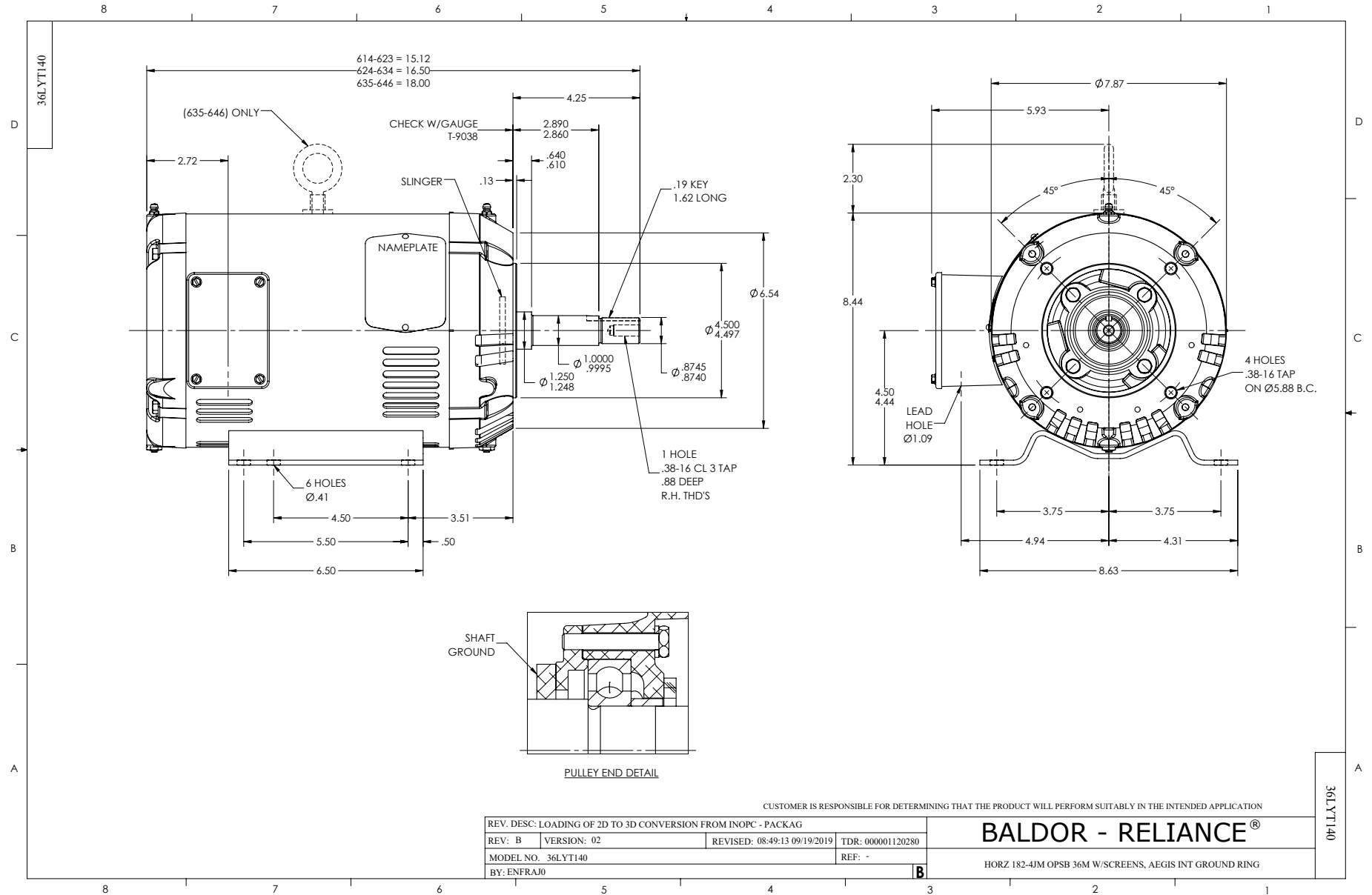
3 HP 3 PH 60 HZ 1765 RPM 460 V 3630M

Typical performance - not guaranteed values.

TORQUES (LB-FT): PO=37.4 PU=17.3 LR=21.2 LRA=32.3



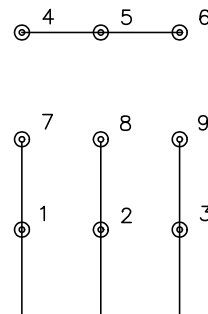
11/27/2024 ACPERF, record # 35737



CD0005

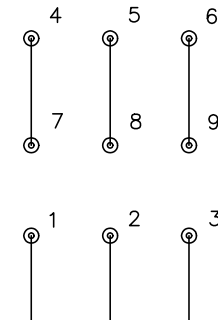


LOW VOLTAGE
(2Y)



LINE

HIGH VOLTAGE
(1Y)



LINE

NOTES:

1. INTERCHANGE ANY TWO LINE LEADS TO REVERSE ROTATION.
2. OPTIONAL THERMOSTATS ARE PROVIDED WHEN SPECIFIED.
3. ACTUAL NUMBER OF INTERNAL PARALLEL CIRCUITS MAY BE A MULTIPLE OF THOSE SHOWN ABOVE.
4. LEAD COLORS ARE OPTIONAL. LEADS MUST ALWAYS BE NUMBERED AS SHOWN.

CD0005

REV. DESC: REVISE TO SHOW OPTIONAL COLORS			
REV. LTR: E	BY: JLP	REVISED: 01/19/99 10:15	TDR: 0171435
S00000		FILE: AAA00005140	MDL: -
		MTL: -	

BALDOR ELECTRIC Co.

3PH, DV, 9 LEADS