

BALDOR • RELIANCE

Customer information packet

EJMM3219T-5

7.5HP, 3470RPM, 3PH, 60HZ, 184JM, 3632M, OPSB

Class - None

Division - Not Applicable

Specifications

Enclosure	OPSB
Frame	184JM
Frame Material	Steel
Frequency	60.00 Hz
Haz Area Class and Group	None
Haz Area Division	Not Applicable
Motor Letter Type	Three Phase
Output @ Frequency	7.500 HP @ 60 HZ
Phase	3
Synchronous Speed @ Frequency	3600 RPM @ 60 HZ
Voltage @ Frequency	575.0 V @ 60 HZ
Agency Approvals	CSA EEV CSA UR
Ambient Temperature	40 °C
Auxillary Box	No Auxillary Box
Auxillary Box Lead Termination	None
Base Indicator	Rigid
Bearing Grease Type	Polyrex EM (-20F +300F)
Blower	None
Current @ Voltage	6.900 A @ 575.0 V
Design Code	A
Drip Cover	No Drip Cover
Duty Rating	CONT
Efficiency @ 100% Load	88.5 %
Electrically Isolated Bearing	Not Electrically Isolated
Feedback Device	NO FEEDBACK
Front Face Code	Standard
Front Shaft Indicator	None
Heater Indicator	No Heater
High Voltage Full Load Amps	6.9 a
Insulation Class	F

Part detail

Revision	F
Type	AC
Mech. spec.	36H823
Base	
Status	PRD/A
Elec. spec.	36WGS515
Layout	36LYH823
Eff. date	05-01-2024
CD Diagram	CD0006
Poles	02
Leads	3#16
Proprietary	False
Created date	08-17-2015

Inverter Code	Inverter Ready
KVA Code	K
Lifting Lugs	No Lifting Lugs
Locked Bearing Indicator	Locked Bearing
Motor Lead Exit	Ko Box
Motor Lead Quantity/Wire Size	3 @ 16 AWG
Motor Lead Termination	Flying Leads
Motor Standards	NEMA
Motor Type	3632M
Mounting Arrangement	F1
Number of Poles	2
Overall Length	16.50 IN
Power Factor	92
Product Family	General Purpose
Pulley End Bearing Type	Ball
Pulley Face Code	C-Face
Pulley Shaft Indicator	Tapped & Key
Rodent Screen	Included
RoHS Status	ROHS COMPLIANT
Service Factor	1.15
Shaft Diameter	0.875 IN
Shaft Extension Location	Pulley End
Shaft Ground Indicator	No Shaft Grounding
Shaft Rotation	Reversible
Shaft Slinger Indicator	Shaft Slinger
Speed	3470 rpm
Speed Code	Single Speed
Starting Method	Direct on line
Thermal Device - Bearing	None
Thermal Device - Winding	None
Vibration Sensor Indicator	No Vibration Sensor
Winding Thermal 1	None
Winding Thermal 2	None

Nameplate

NP1259L									
CAT.NO.	EJMM3219T-5								
SPEC.	36H823S515G1								
HP	7.5								
VOLTS	575								
AMP	6.9								
RPM	3470								
FRAME	184JM		HZ	60		PH	3		
SER.F.	1.15	CODE	K	DES	A	CL	F		
NEMA-NOM-EFF	88.5	PF	92						
RATING	40C AMB-CONT								
CC	010A								
DE	6207		ODE	6205					
ENCL	OPSB	SN							

Parts list

Part number	Description	Quantity
SA305729	SA 36H823S515G1	1.000 ea
RA292958	RA 36H823S515G1	1.000 ea
36CB3000SP	CONDUIT BOX, CAST	1.000 ea
51XB1016A07	10-16 X 7/16 HXWSSLD SERTYB	2.000 ea
11XW1032G06	10-32 X .38, TAPTITE II, HEX WSHR SLTD U	1.000 ea
HW3001B01	BRASS CUP WASHER, FOR #10 SCREW	1.000 ea
36EP3204D00	MASTER ODE,205 BRG,GRSR,RLF	1.000 ea
HA1103A08	RODENT SCREEN, 36 FRAME, OPEN, FRONT END	1.000 ea
51XW1032A06	10-32 X .38, TAPTITE II, HEX WSHR SLTD S	4.000 ea
HW1000A10	#10 FLAT WASHER (SAE)	4.000 ea
HW4500A01	1641B(ALEMITE)400 UNIV, GREASE FITT	1.000 ea
HW4500A17	317400 ALEMITE GREASE RELIEF	1.000 ea
HW5100A05	WVY WSHR F/205 & 304 BRGS	1.000 ea
36EP3405A04	PUEP 182-4C OPEN 207 BRG W/ TSLV, GRSR	1.000 ea
HA1102A07	RODENT SCREEN 36 OPEN FACE	2.000 ea
51XW1032A06	10-32 X .38, TAPTITE II, HEX WSHR SLTD S	4.000 ea
HW1000A10	#10 FLAT WASHER (SAE)	4.000 ea
HW4500A01	1641B(ALEMITE)400 UNIV, GREASE FITT	1.000 ea
HW4500A17	317400 ALEMITE GREASE RELIEF	1.000 ea
10XN2520A24	1/4-20X 1 1/2 HEX HD X	4.000 ea
HW1001A25	LOCKWASHER 1/4, ZINC PLT .493 OD, .255 I	4.000 ea
35CB4514	35 LIPPED CB LID	1.000 ea
51XW0832A07	8-32 X .44, TAPTITE II, HEX WSHR SLTD SE	4.000 ea
HA1005A07	SLINGER, OD 2.25, ID 1.344, 307 BRG	1.000 ea
HW2501D15	KEY, 3/16 X 1.625	1.000 ea
HA7000A01	KEY RETAINER 7/8" DIA SHAFT	1.000 ea
85XU0407S04	4X1/4 U DRIVE PIN STAINLESS	2.000 ea
MJ1000A02	GREASE, POLYREX EM EXXON	0.050 lb
MG1050Y01	CELEROL BALDOR GOLD *** NLA IN 5 GALLON	0.022 ga
HA3101A25	THRUBOLT 1/4-20 X 11.000 OHIO ROD	4.000 ea
36AD2004A01	BAFFLE PLATE,MOD 36-SLTD BAND MTRS DELTA	2.000 ea

LC0006	CONNECTION LABEL	1.000 ea
NP1259L	ALUM SUPER-E UL CC NEMA PREMIUM A60	1.000 ea
36PA1001	PKG GRP, PRINT PK1017A06	1.000 ea
MN416A01	TAG-INSTAL-MAINT no wire (2500bx)4/22	1.000 ea
FE-0000004	ZRTG FE ASSEMBLY	1.000 ea
PE-0000004	ZRTG PE ASSEMBLY	1.000 ea
LB1624	COMBINED WARNING LABEL, ISO/ANSI PICTOGR	1.000 ea

AC Induction Motor Performance Data

Record # 32598

Typical performance - not guaranteed values

Winding: 36WGS515-R002		Type: 3632M	Enclosure: OPSB	
Nameplate Data			575 V, 60 Hz: Single Voltage Motor	
Rated Output (HP)	7.5	Full Load Torque	11.3 LB-FT	
Volts	575	Start Configuration	direct on line	
Full Load Amps	6.9	Breakdown Torque	54.1 LB-FT	
R.P.M.	3470	Pull-up Torque	36.1 LB-FT	
Hz	60 Phase	3	Locked-rotor Torque	41.6 LB-FT
NEMA Design Code	A KVA Code	K	Starting Current	67.6 A
Service Factor (S.F.)	1.15	No-load Current	2.3 A	
NEMA Nom. Eff.	88.5 Power Factor	92	Line-line Res. @ 25°C	2.53 Ω
Rating - Duty	40C AMB-CONT	Temp. Rise @ Rated Load	43°C	
S.F. Amps		Temp. Rise @ S.F. Load	53°C	
		Locked-rotor Power Factor	47	
		Rotor inertia	0.143 LB-FT ²	

Load Characteristics 575 V, 60 Hz, 7.5 HP

% of Rated Load	25	50	75	100	125	150	S.F.
Power Factor	59	81	88	92	93	93	93
Efficiency	82.4	88.3	89.5	89.3	88.3	86.2	88.7
Speed	3571	3542	3512	3477	3441	3401	3455
Line amperes	2.84	3.91	5.31	6.85	8.51	10.5	7.85

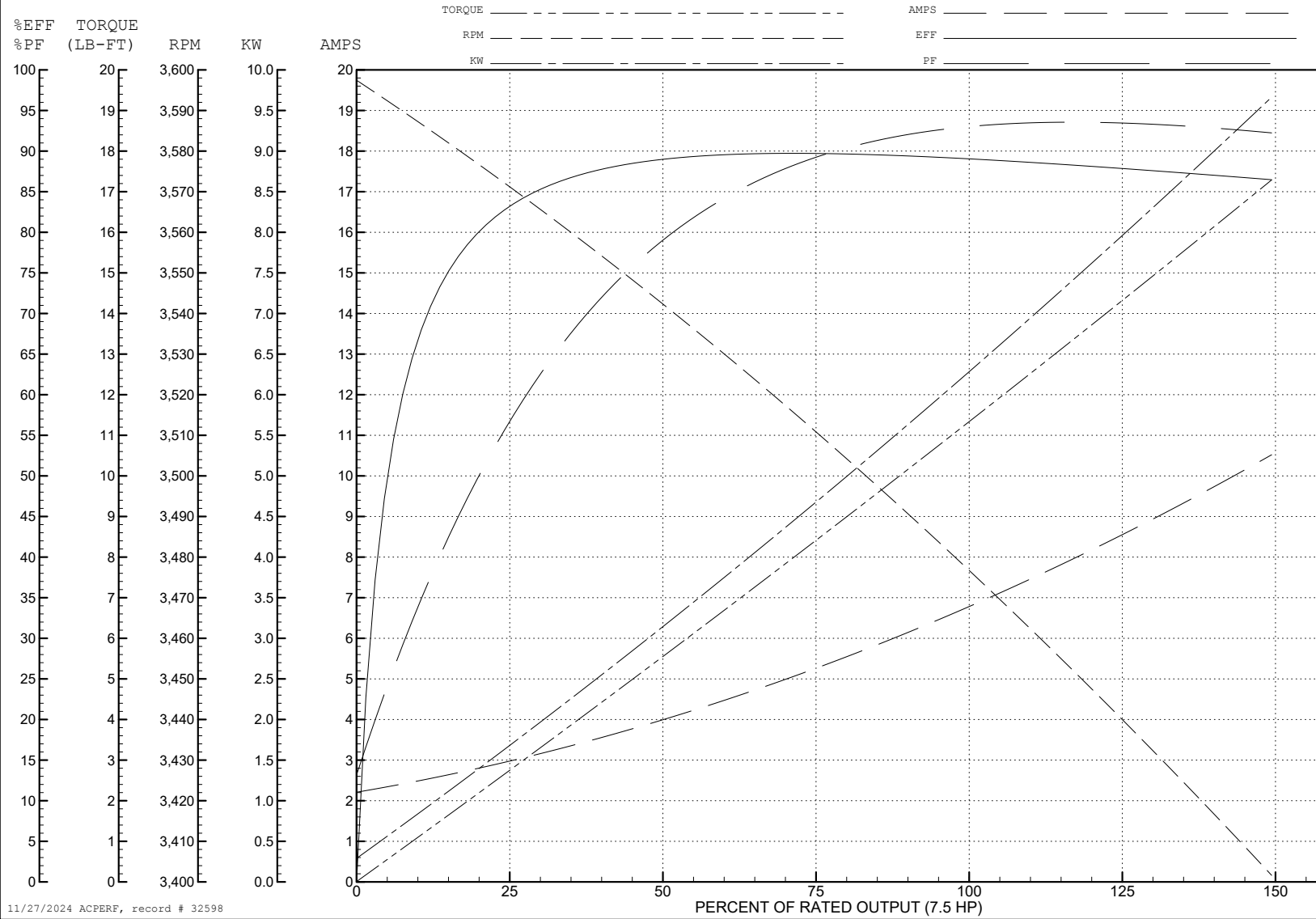
ABB Motors and Mechanical Inc.

WINDING # 36WGS515

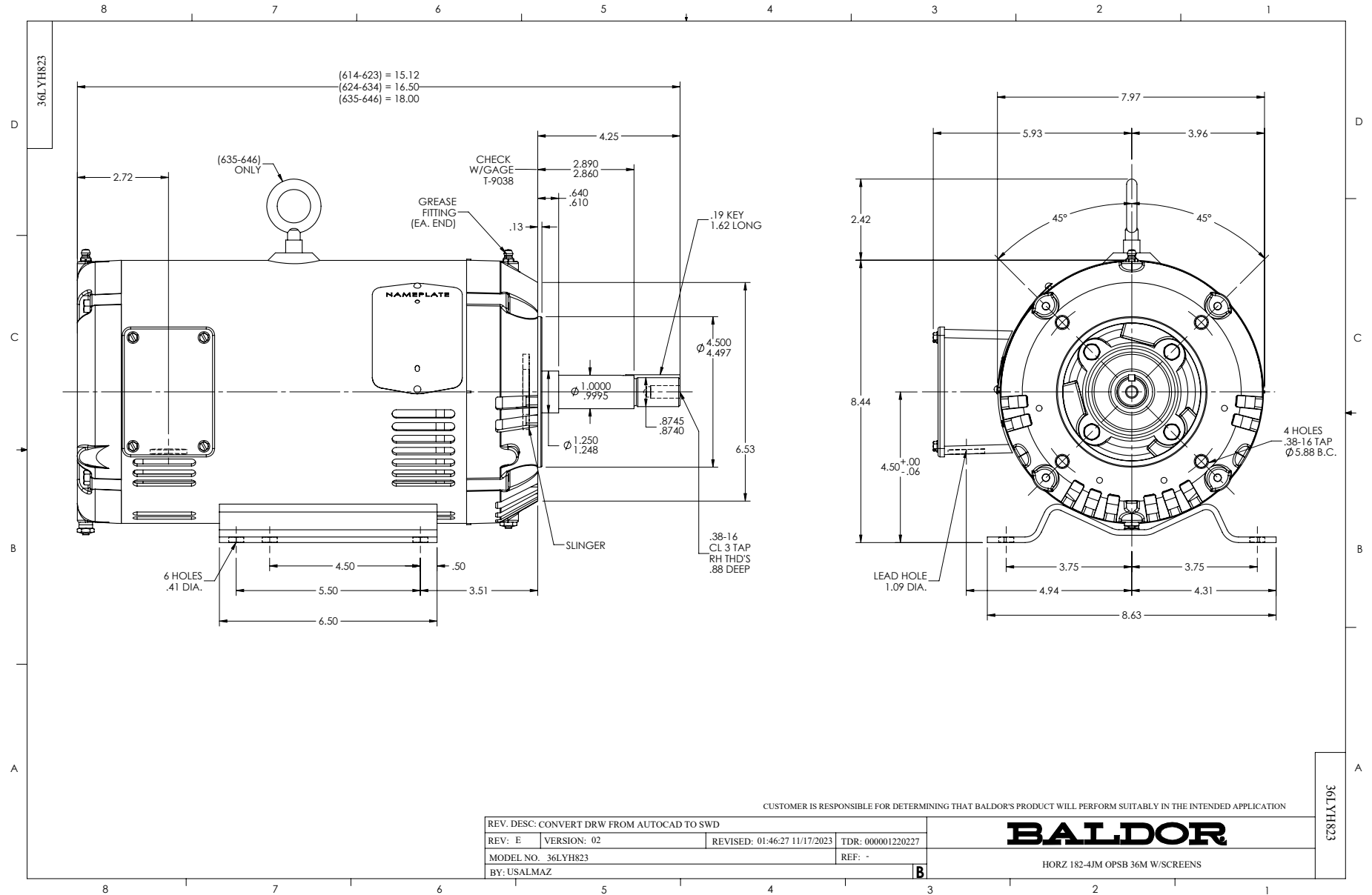
Typical performance - not guaranteed values.

7.5 HP 3 PH 60 HZ 3470 RPM 575 V 3632M

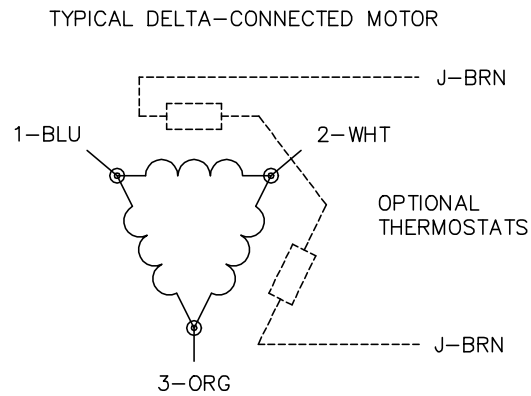
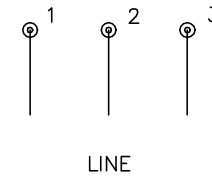
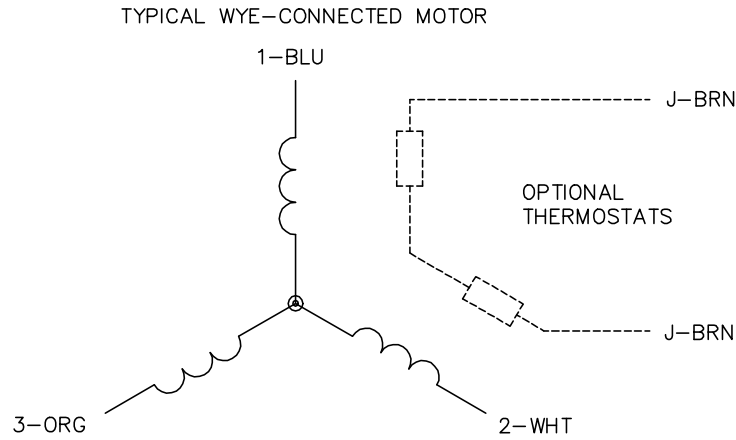
TORQUES (LB-FT): PO=54.1 PU=36.1 LR=41.6 LRA=67.6



11/27/2024 ACPERF, record # 32598



CD0006



NOTES:

1. THREE LEAD MOTOR MAY BE EITHER WYE CONNECTED OR DELTA CONNECTED.
2. INTERCHANGE ANY TWO LINE LEADS TO REVERSE ROTATION.
3. OPTIONAL THERMOSTATS ARE PROVIDED WHEN SPECIFIED.
4. ACTUAL NUMBER OF INTERNAL PARALLEL CIRCUITS MAY VARY.
5. LEAD COLORS ARE OPTIONAL. LEADS MUST BE NUMBERED AS SHOWN.

CD0006

REV. DESC: ADD CLASS CONN00000007		
REV. LTR: E	VERSION: 01	TDR: 000001099922
FILE: \AAA\00005\141	REVISED: 10:24:49 02/19/2019	BY: ENBRIRO
MTL: -		© □

BALDOR - RELIANCE®

3PH, SV, 3 LEADS, WYE OR DELTA CONNECTED

SH 1 of 1