



Customer information packet

EJMM3314T-5

15HP, 3475RPM, 3PH, 60HZ, 215JM, 3734M, OPSB, F

Class - None

Division - Not Applicable

Specifications

Enclosure	OPSB
Frame	215JM
Frame Material	Steel
Frequency	60.00 Hz
Haz Area Class and Group	None
Haz Area Division	Not Applicable
Motor Letter Type	Three Phase
Output @ Frequency	15.000 HP @ 60 HZ
Phase	3
Synchronous Speed @ Frequency	3600 RPM @ 60 HZ
Voltage @ Frequency	575.0 V @ 60 HZ
Agency Approvals	UR CSA CSA EEV
Ambient Temperature	40 °C
Auxillary Box	No Auxillary Box
Auxillary Box Lead Termination	None
Base Indicator	Rigid
Bearing Grease Type	Polyrex EM (-20F +300F)
Blower	None
Current @ Voltage	13.800 A @ 575.0 V
Design Code	B
Drip Cover	No Drip Cover
Duty Rating	CONT
Efficiency @ 100% Load	90.2 %
Electrically Isolated Bearing	Not Electrically Isolated
Feedback Device	NO FEEDBACK
Front Face Code	Standard
Front Shaft Indicator	None
Heater Indicator	No Heater
High Voltage Full Load Amps	13.8 a
Insulation Class	F

Part detail

Revision	H
Type	AC
Mech. spec.	37F696
Base	
Status	PRD/A
Elec. spec.	37WGR227
Layout	37LYF696
Eff. date	05-01-2024
CD Diagram	CD0006
Poles	02
Leads	3#14
Proprietary	False
Created date	08-18-2015

Inverter Code	Inverter Ready
KVA Code	G
Lifting Lugs	Standard Lifting Lugs
Locked Bearing Indicator	Locked Bearing
Motor Lead Exit	Ko Box
Motor Lead Quantity/Wire Size	3 @ 14 AWG
Motor Lead Termination	Flying Leads
Motor Standards	NEMA
Motor Type	3734M
Mounting Arrangement	F1
Number of Poles	2
Overall Length	18.19 IN
Power Factor	89
Product Family	General Purpose
Pulley End Bearing Type	Ball
Pulley Face Code	C-Face
Pulley Shaft Indicator	Tapped & Key
Rodent Screen	Included
Service Factor	1.15
Shaft Diameter	0.875 IN
Shaft Extension Location	Pulley End
Shaft Ground Indicator	No Shaft Grounding
Shaft Rotation	Reversible
Shaft Slinger Indicator	Shaft Slinger
Speed	3475 rpm
Speed Code	Single Speed
Starting Method	Direct on line
Thermal Device - Bearing	None
Thermal Device - Winding	None
Vibration Sensor Indicator	No Vibration Sensor
Winding Thermal 1	None
Winding Thermal 2	None

Nameplate

NP1259L									
CAT.NO.	EJMM3314T-5								
SPEC.	37F696R227G1								
HP	15								
VOLTS	575								
AMP	13.8								
RPM	3475								
FRAME	215JM		HZ	60		PH	3		
SER.F.	1.15	CODE	G	DES	B	CL	F		
NEMA-NOM-EFF	90.2	PF	89						
RATING	40C AMB-CONT								
CC	010A								
DE	6309		ODE	6206					
ENCL	OPSB	SN							

Parts list

Part number	Description	Quantity
SA305847	SA 37F696R227G1	1.000 ea
RA293077	RA 37F696R227G1	1.000 ea
HA6361A01	LIFTING LUG FOR 37, 39 & 40 FRAME ZINC	2.000 ea
37CB3004	37 CB CASTING W/1.09 LEAD HOLE @ 6:00	1.000 ea
51XW2520A10	.25-20 X .62, TAPTITE II, HEX WSHR SLTD	2.000 ea
11XW1032G06	10-32 X .38, TAPTITE II, HEX WSHR SLTD U	1.000 ea
37EP3203A00	MASTER,ODE,206 BRG,GREASER	1.000 ea
HA1104A01	RODENT SCREEN 37 FRAME 206 BRG FRONT END	1.000 ea
51XW1032A06	10-32 X .38, TAPTITE II, HEX WSHR SLTD S	4.000 ea
HW1000A10	#10 FLAT WASHER (SAE)	2.000 ea
HW4500A01	1641B(ALEMITE)400 UNIV, GREASE FITT	1.000 ea
HW1000A10	#10 FLAT WASHER (SAE)	4.000 ea
HW4500A01	1641B(ALEMITE)400 UNIV, GREASE FITT	1.000 ea
HW5100A06	W2420-025 WVY WSHR (WB)	1.000 ea
37PE3401A04	PUEP ASSEMBLY FOR ROUTING PURPOSES	1.000 ea
HA1222	RODENT SCREEN - 37 C-FACE MOTORS	4.000 ea
51XW1032A06	10-32 X .38, TAPTITE II, HEX WSHR SLTD S	2.000 ea
10XN2520A36	1/4-20X 2 1/4 HEX HD X	4.000 ea
HW1001A25	LOCKWASHER 1/4, ZINC PLT .493 OD, .255 I	4.000 ea
XY3118A12	5/16-18 HEX NUT DIRECTIONAL SERRATION	4.000 ea
37CB4516	LIPPED LID FOR 37 FRAME NEC KOBX	1.000 ea
51XW0832A07	8-32 X .44, TAPTITE II, HEX WSHR SLTD SE	4.000 ea
HW4600A73	SLINGER 1.748 X 2.375 X 0.250 FACE SEAL	1.000 ea
HW2501D13	KEY, 3/16 SQ X 1.375	1.000 ea
HA7000A02	KEY RETAINER RING, 1 1/8 DIA, 1 3/8 DIA	1.000 ea
85XU0407S04	4X1/4 U DRIVE PIN STAINLESS	2.000 ea
MJ1000A02	GREASE, POLYREX EM EXXON	0.050 lb
MG1050Y01	CELEROL BALDOR GOLD *** NLA IN 5 GALLON	0.028 ga
HA3104A39	THRUBOLT-5/16-18 X 12.250	4.000 ea
37AD2001A01	BAFFLE PLATE, PLASTIC 0.63" WIDTH	2.000 ea
LC0006	CONNECTION LABEL	1.000 ea

NP1259L	ALUM SUPER-E UL CC NEMA PREMIUM A60	1.000 ea
37PA1074	PALLET PACK GRP, PRINT BOX PK1026A06	1.000 ea
MN416A01	TAG-INSTAL-MAINT no wire (2500bx)4/22	1.000 ea
LB1624	COMBINED WARNING LABEL, ISO/ANSI PICTOGR	1.000 ea
FE-0000004	ZRTG FE ASSEMBLY	1.000 ea

AC Induction Motor Performance Data

Record # 52423

Typical performance - not guaranteed values

Winding: 37WGR227-R001		Type: 3734M		Enclosure: OPSB	
Nameplate Data			575 V, 60 Hz: Single Voltage Motor		
Rated Output (HP)	15	Full Load Torque	22.6 LB-FT		
Volts	575	Start Configuration	direct on line		
Full Load Amps	13.8	Breakdown Torque	91.7 LB-FT		
R.P.M.	3475	Pull-up Torque	28.4 LB-FT		
Hz	60	Locked-rotor Torque	37.3 LB-FT		
NEMA Design Code	B	Starting Current	87 A		
Service Factor (S.F.)	1.15	No-load Current	4.33 A		
NEMA Nom. Eff.	90.2	Line-line Res. @ 25°C	1.04 Ω		
Rating - Duty	40C	Temp. Rise @ Rated Load	46°C		
S.F. Amps	AMB-CONT	Temp. Rise @ S.F. Load	58°C		
		Locked-rotor Power Factor	32.6		
		Rotor inertia	0.31 LB-FT ²		

Load Characteristics 575 V, 60 Hz, 15 HP

% of Rated Load	25	50	75	100	125	150	S.F.
Power Factor	58	79	86	89	89	88	89
Efficiency	90.5	92.6	92.3	90.9	89.3	87.1	89.9
Speed	3572	3545	3515	3479	3441	3398	3456
Line amperes	5.3	7.62	10.5	13.8	17.6	21.8	16.1

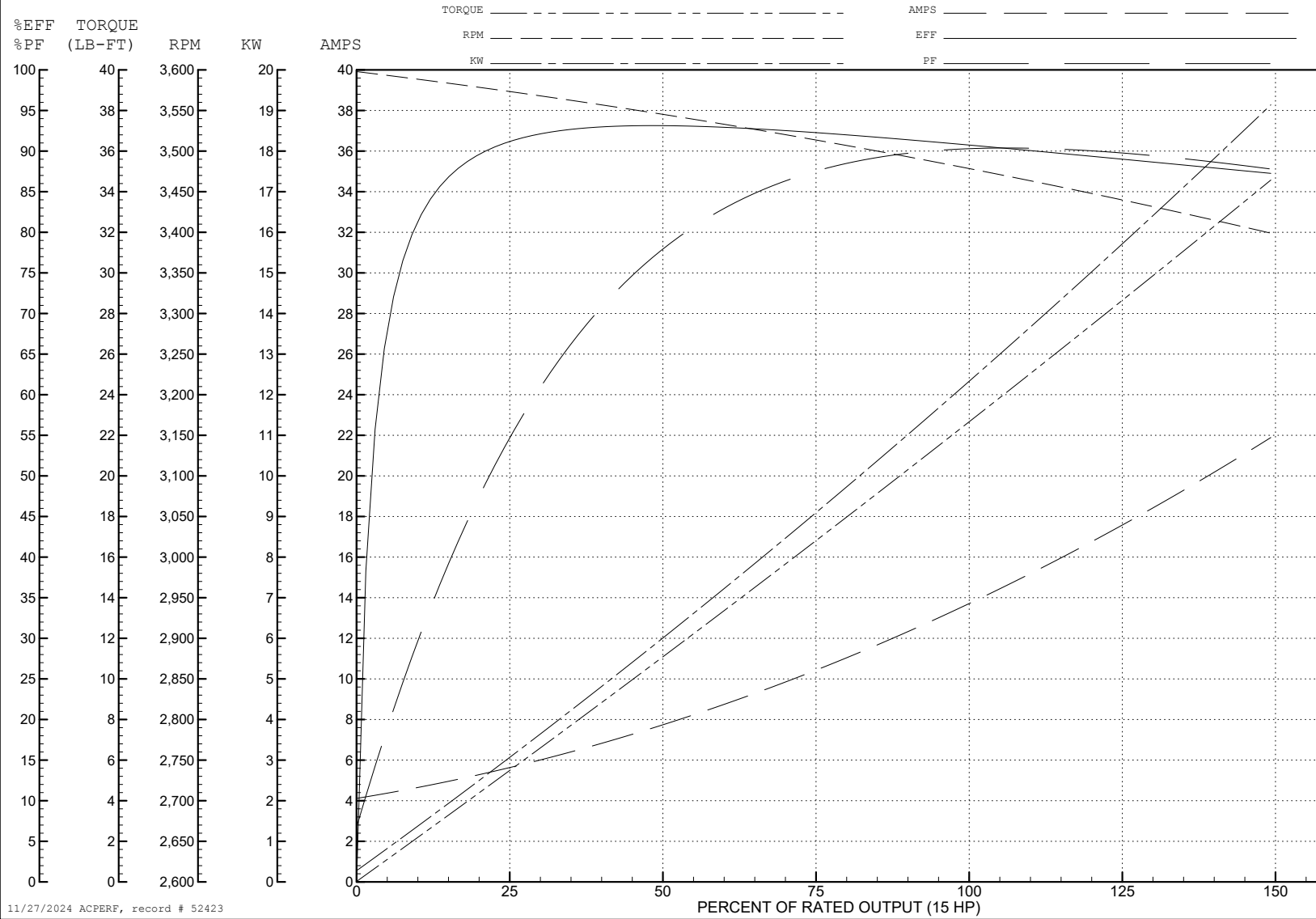
ABB Motors and Mechanical Inc.

WINDING # 37WGR227

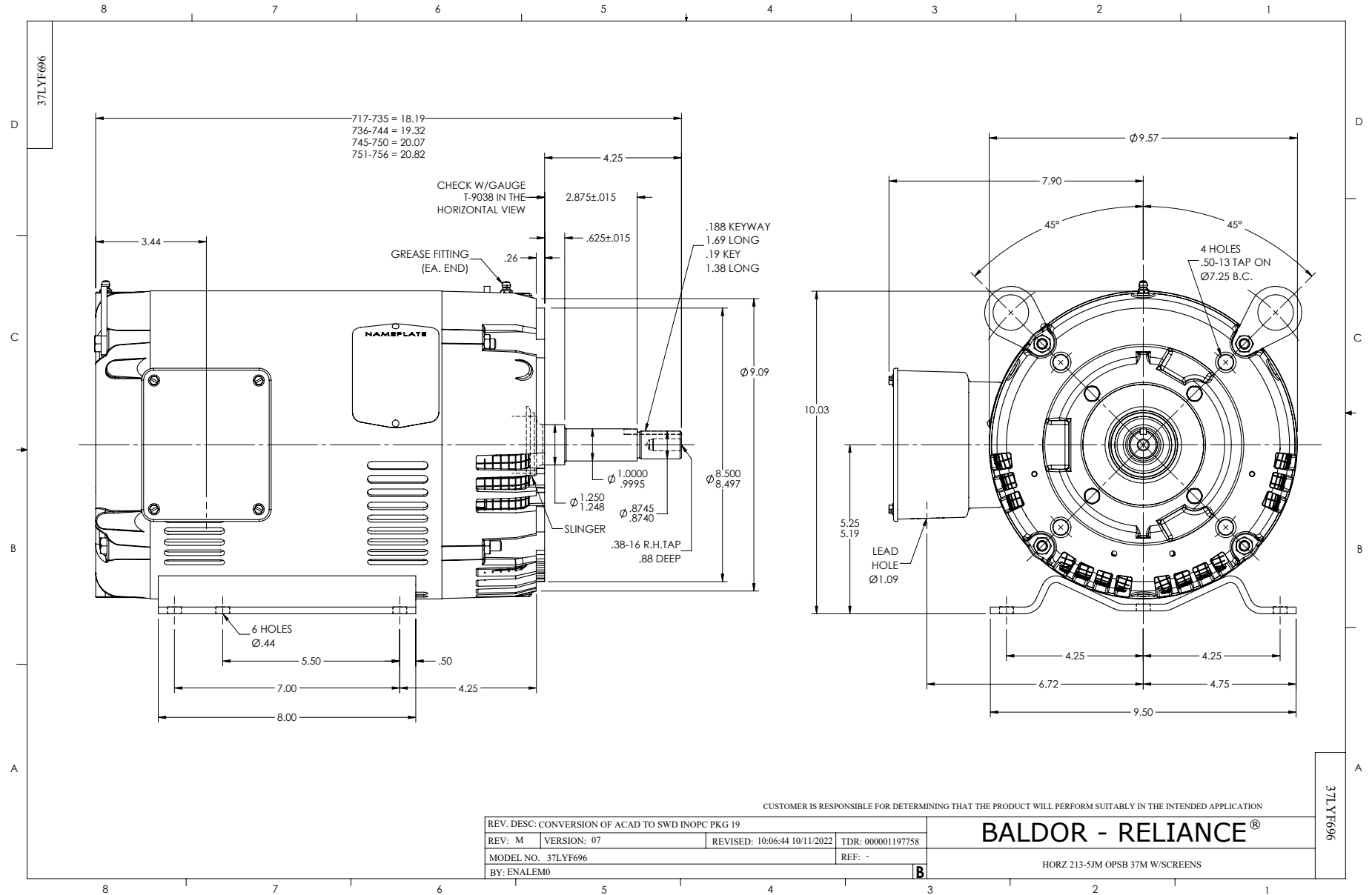
Typical performance - not guaranteed values.

15 HP 3 PH 60 HZ 3475 RPM 575 V 3734M

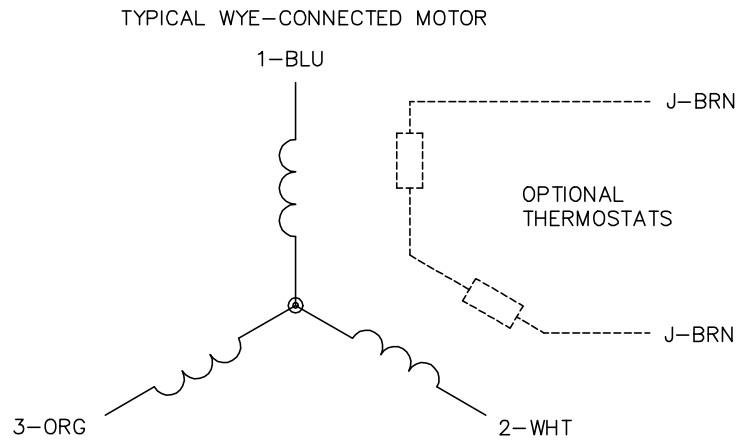
TORQUES (LB-FT): PO=91.7 PU=28.4 LR=37.3 LRA=87



11/27/2024 ACPERF, record # 52423



CD0006



NOTES:

1. THREE LEAD MOTOR MAY BE EITHER WYE CONNECTED OR DELTA CONNECTED.
2. INTERCHANGE ANY TWO LINE LEADS TO REVERSE ROTATION.
3. OPTIONAL THERMOSTATS ARE PROVIDED WHEN SPECIFIED.
4. ACTUAL NUMBER OF INTERNAL PARALLEL CIRCUITS MAY VARY.
5. LEAD COLORS ARE OPTIONAL. LEADS MUST BE NUMBERED AS SHOWN.

CD0006

REV. DESC: ADD CLASS CONN00000007		
REV. LTR: E	VERSION: 01	TDR: 000001099922
FILE: \AAA\00005\141	REVISED: 10:24:49 02/19/2019	BY: ENBRIRO
MTL: -		© □

BALDOR - RELIANCE®

3PH, SV, 3 LEADS, WYE OR DELTA CONNECTED

SH 1 of 1