



---

# Customer information packet

## EL11300

.25HP, 1140RPM, 1PH, 60HZ, 56, 3416LC, OPEN, F1

Class - None

Division - Not Applicable

## Specifications

Enclosure	OPEN
Frame	56
Frame Material	Steel
Frequency	60.00 Hz
Haz Area Class and Group	None
Haz Area Division	Not Applicable
Motor Letter Type	Cap Start, Cap Run
Output @ Frequency	.250 HP @ 60 HZ
Phase	1
Synchronous Speed @ Frequency	1200 RPM @ 60 HZ
Voltage @ Frequency	115.0 V @ 60 HZ 230.0 V @ 60 HZ
Agency Approvals	CURUSEEV
Ambient Temperature	40 °C
Auxillary Box	No Auxillary Box
Auxillary Box Lead Termination	None
Base Indicator	Rigid
Bearing Grease Type	Polyrex EM (-20F +300F)
Blower	None
Current @ Voltage	1.450 A @ 230.0 V 2.900 A @ 115.0 V
Design Code	N
Drip Cover	No Drip Cover
Duty Rating	CONT
Efficiency @ 100% Load	64.0 %
Electrically Isolated Bearing	Not Electrically Isolated
Feedback Device	NO FEEDBACK
Front Face Code	Standard
Front Shaft Indicator	None
Heater Indicator	No Heater
High Voltage Full Load Amps	1.5 a
Insulation Class	B

## Part detail

Revision	H
Type	AC
Mech. spec.	34F353
Base	
Status	PRD/A
Elec. spec.	34WGR066
Layout	34LYF353
Eff. date	10-29-2024
CD Diagram	CD0055
Poles	06
Leads	6#18
Proprietary	False
Created date	09-26-2014

Inverter Code	Not Inverter
KVA Code	J
Lifting Lugs	No Lifting Lugs
Locked Bearing Indicator	No Locked Bearing
Motor Lead Exit	Ko Box
Motor Lead Quantity/Wire Size	6 @ 18 AWG
Motor Lead Termination	Flying Leads
Motor Standards	NEMA
Motor Type	3416LC
Mounting Arrangement	F1
Number of Poles	6
Overall Length	10.13 IN
Power Factor	84
Product Family	General Purpose
Pulley End Bearing Type	Ball
Pulley Face Code	Standard
Pulley Shaft Indicator	Standard
Rodent Screen	None
RoHS Status	ROHS COMPLIANT
Service Factor	1.35
Shaft Diameter	0.625 IN
Shaft Extension Location	Pulley End
Shaft Ground Indicator	No Shaft Grounding
Shaft Rotation	Reversible
Shaft Slinger Indicator	No Slinger
Speed	1140 rpm
Speed Code	Single Speed
Starting Method	Direct on line
Thermal Device - Bearing	None
Thermal Device - Winding	None
Vibration Sensor Indicator	No Vibration Sensor
Winding Thermal 1	None
Winding Thermal 2	None

**Nameplate**

<b>NP3155L</b>									
<b>CAT.NO.</b>	EL11300								
<b>SPEC.</b>	34F353R066G1								
<b>HP</b>	.25								
<b>VOLTS</b>	115/230								
<b>AMP</b>	2.9/1.45								
<b>RPM</b>	1140								
<b>FRAME</b>	56		<b>HZ</b>	60		<b>PH</b>	1		
<b>SER.F.</b>	1.35	<b>CODE</b>	J	<b>DES</b>	N	<b>CL</b>	B		
<b>F.L. AVG. EFF.</b>	64	<b>PF</b>	84						
<b>RATING</b>	40C AMB-CONT								
<b>CC</b>									
<b>DE</b>	6203		<b>ODE</b>	6203					
<b>ENCL</b>	OPEN	<b>SN</b>							
	SFA 3.7/1.85								

## Parts list

Part number	Description	Quantity
SA287480	SA 34F353R066G1	1.000 ea
RA273693	RA 34F353R066G1	1.000 ea
OC3020F12SP	CAPACITORS 20 MFD 370 VAC	1.000 ea
EC1108C03	ELEC CAP, 108-130 MFD, 250V, 1.81D X 3.	1.000 ea
NS2512A01	INSULATOR, CONDUIT BOX X	1.000 ea
34CB3002A	CB CAST W/.88 DIA HOLE	1.000 ea
51XB1016A07	10-16 X 7/16 HXWSSLD SERTYB	2.000 ea
11XW1032G06	10-32 X .38, TAPTITE II, HEX WSHR SLTD U	1.000 ea
51XW0832A07	8-32 X .44, TAPTITE II, HEX WSHR SLTD SE	2.000 ea
SP1006A01	INSULATOR MODEL 35 SWITCH	1.000 ea
34EP3210A01SP	FR ENDPLATE, MACH	1.000 ea
34CB3801	CAPACITOR BOX, DIE CAST	1.000 ea
51XB1214A08	12-14 X 1/2HX WS SL SR TYBX	2.000 ea
34GS5003A01	FOAM SLEEVE, ID = 2 1/16" X 4 3/8"	1.000 ea
HW5100A03	WAVY WASHER (W1543-017)	1.000 ea
34EP3212A02	PU ENDPLATE, MODEL 34 OPEN	1.000 ea
XY1032A02	10-32 HEX NUT DIRECTIONAL SERRATION	4.000 ea
34CB4517	CB LID 4 MTG HOLES .22 DIA STAMPED, FOR	1.000 ea
51XW0832A07	8-32 X .44, TAPTITE II, HEX WSHR SLTD SE	4.000 ea
HW2501D13	KEY, 3/16 SQ X 1.375	1.000 ea
HA7000A04	KEY RETAINER 0.625 DIA SHAFTS	1.000 ea
85XU0407S04	4X1/4 U DRIVE PIN STAINLESS	2.000 ea
MG1050Y01	CELEROL BALDOR GOLD *** NLA IN 5 GALLON	0.014 ga
HA3100A44	THRUBOLT 10-32 X 8.000	4.000 ea
SP5051B17	MDL 34 TORQ STAT SW, TYPE LC, STD F1 & F2	1.000 ea
LC0001A01	CONN LABEL / WARNING LABEL (LC0001 / LB1	1.000 ea
MN416A01	TAG-INSTAL-MAINT no wire (2500bx)4/22	1.000 ea
NP3155L	ALUM SUPER-E UL CC "SEMS"	1.000 ea
35PA1066	PKG GRP, PRINT PK1008A06	1.000 ea

**AC Induction Motor Performance Data**

Record # 47415

Typical performance - not guaranteed values

Winding: 34WGR066-R003		Type: 3416LC	Enclosure: OPEN	
<b>Nameplate Data</b>			<b>115 V, 60 Hz: Low Voltage Connection</b>	
Rated Output (HP)	.25	Full Load Torque	1.14 LB-FT	
Volts	115/230	Start Configuration	direct on line	
Full Load Amps	2.9/1.45	Breakdown Torque	2.4 LB-FT	
R.P.M.	1140	Pull-up Torque	2.67 LB-FT	
Hz	60 Phase	1	Locked-rotor Torque	4.23 LB-FT
NEMA Design Code	N KVA Code	J	Starting Current	16.5 A
Service Factor (S.F.)	1.35	No-load Current	1.98 A	
NEMA Nom. Eff.	64 Power Factor	84	Line-line Res. @ 25°C	3.8763 Ω A Ph 7.1352 Ω B Ph
Rating - Duty	40C AMB-CONT	Temp. Rise @ Rated Load	48°C	
S.F. Amps	3.7/1.85	Temp. Rise @ S.F. Load	63°C	

**Load Characteristics 115 V, 60 Hz, 0.25 HP**

% of Rated Load	25	50	75	100	125	150	S.F.
Power Factor	61	73	80	85	88	89	88
Efficiency	33.6	51.9	61.3	65.6	66.9	65	66.1
Speed	1186.6	1176.1	1163.7	1149.1	1130.7	1104.8	1120
Line amperes	2.01	2.17	2.48	2.92	3.45	4.15	3.73

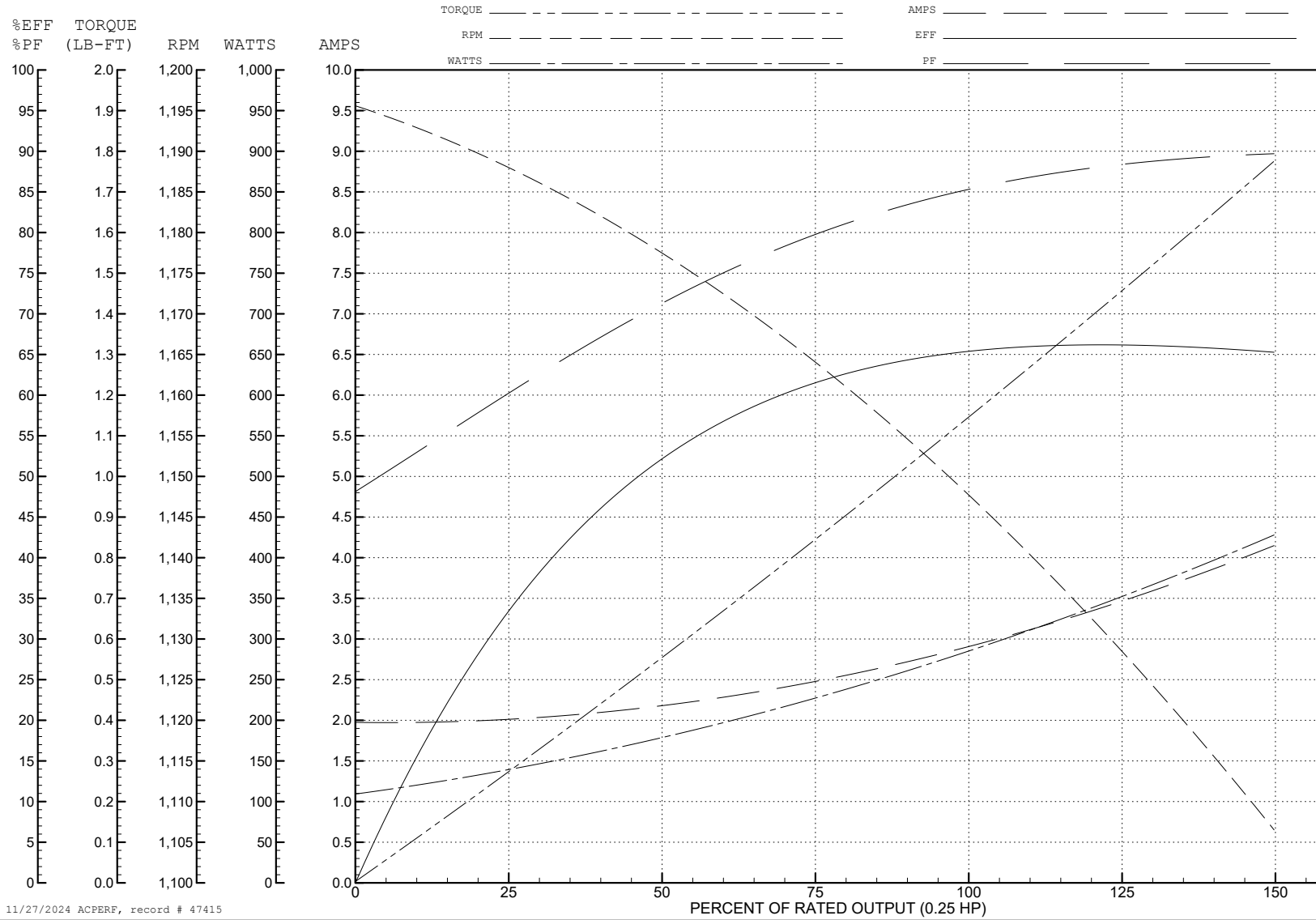
ABB Motors and Mechanical Inc.

WINDING # 34WGR066

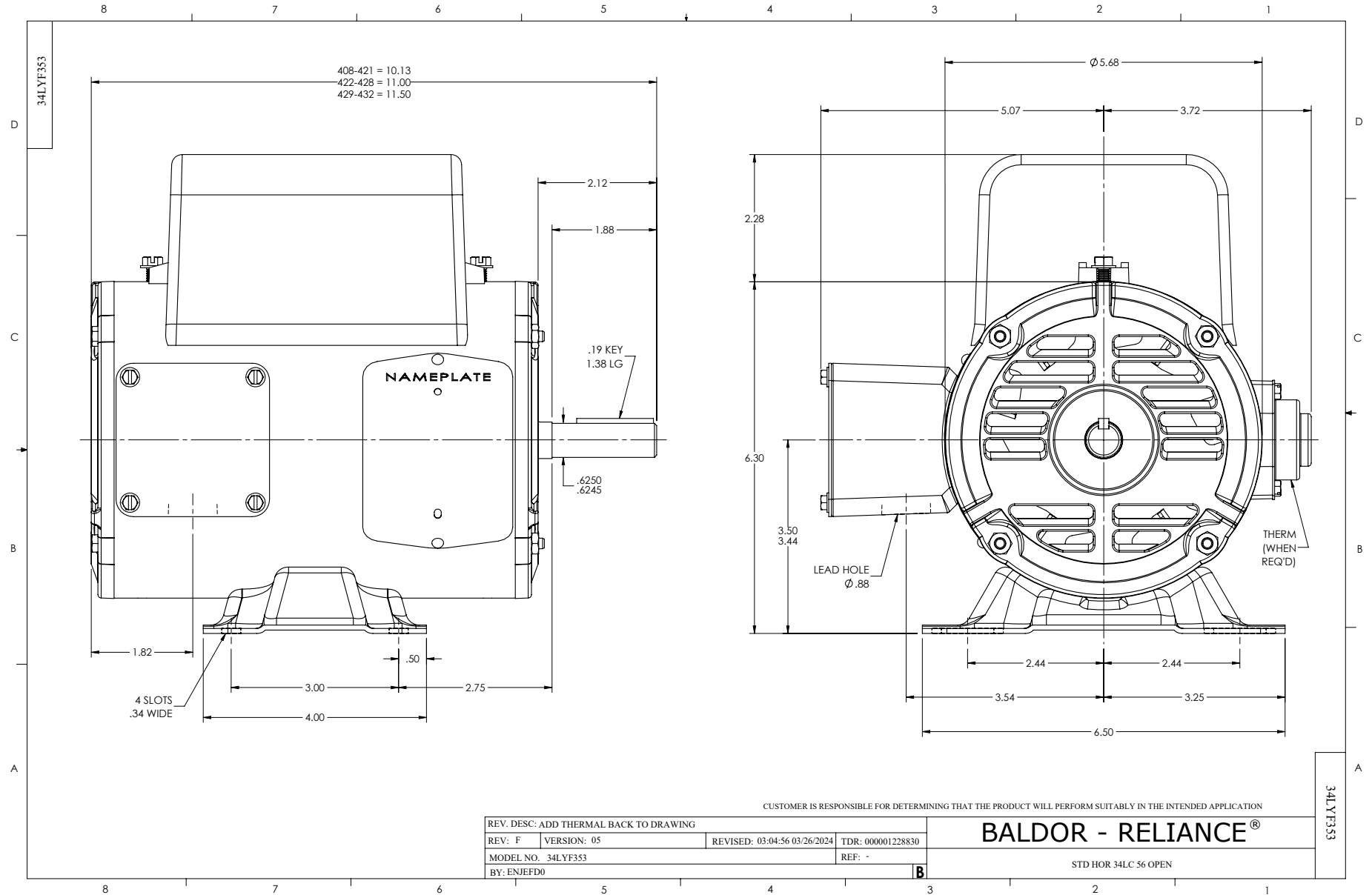
Typical performance - not guaranteed values.

0.25 HP 1 PH 60 HZ 1140 RPM 115 V 3416LC

TORQUES (LB-FT): PO=2.4 PU=2.67 LR=4.23 LRA=16.5

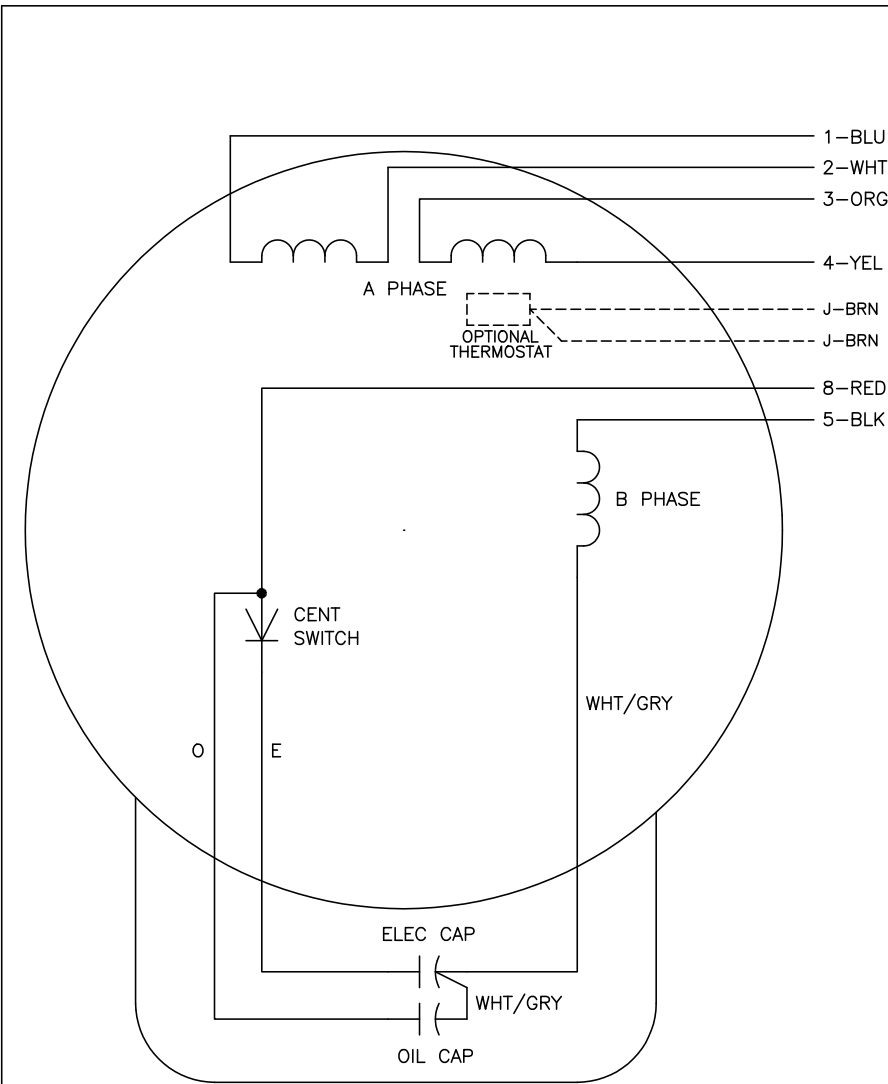


11/27/2024 ACPERF, record # 47415





CD0055



	LINE A	LINE B	JOIN
HIGH STD	1	4,5	2,3,8
HIGH OPP	1	4,8	2,3,5
LOW STD	1,3,8	2,4,5	-
LOW OPP	1,3,5	2,4,8	-

**NOTES:**

1. STANDARD ROTATION IS CCW FACING END OPPOSITE SHAFT EXTENSION.
2. OPTIONAL THERMOSTAT IS PROVIDED WHEN SPECIFIED.
3. MULTIPLE CAPACITORS ARE CONNECTED IN PARALLEL UNLESS OTHERWISE SPECIFIED.
4. LEAD COLORS ARE OPTIONAL. LEADS MUST ALWAYS BE NUMBERED AS SHOWN.

REV. DESC: REVISE TO SHOW OPTIONAL COLORS			
REV. LTR: D	BY: JLP	REVISED: 04/08/99 1:17	TDR: 0178636
C00000		FILE: AAA00007414	MDL: -
		MTL: -	

**BALDOR ELECTRIC Co.**

TYPE LC, DV, REV, 6 LEADS

CD0055