

BALDOR • RELIANCE

Customer information packet

EL11308

.75HP, 1160RPM, 1PH, 60HZ, 56H, 3530LC, OPEN, F

Class - None

Division - Not Applicable

Specifications

Enclosure	OPEN
Frame	56H
Frame Material	Steel
Frequency	60.00 Hz
Haz Area Class and Group	None
Haz Area Division	Not Applicable
Motor Letter Type	Cap Start, Cap Run
Output @ Frequency	.750 HP @ 60 HZ
Phase	1
Synchronous Speed @ Frequency	1200 RPM @ 60 HZ
Voltage @ Frequency	230.0 V @ 60 HZ 208.0 V @ 60 HZ 115.0 V @ 60 HZ
Agency Approvals	CURUSEEV
Ambient Temperature	40 °C
Auxillary Box	No Auxillary Box
Auxillary Box Lead Termination	None
Base Indicator	Rigid
Bearing Grease Type	Polyrex EM (-20F +300F)
Blower	None
Current @ Voltage	6.300 A @ 115.0 V 3.500 A @ 208.0 V 3.200 A @ 230.0 V
Design Code	L
Drip Cover	No Drip Cover
Duty Rating	CONT
Efficiency @ 100% Load	81.5 %
Electrically Isolated Bearing	Not Electrically Isolated
Feedback Device	NO FEEDBACK
Front Shaft Indicator	None
Heater Indicator	No Heater
High Voltage Full Load Amps	3.2 a

Part detail

Revision	D
Type	AC
Mech. spec.	35E007
Base	
Status	PRD/A
Elec. spec.	35WGG064
Layout	35LYE007
Eff. date	07-02-2024
CD Diagram	CD0055
Poles	06
Leads	6#18
Proprietary	False
Created date	08-01-2022

Insulation Class	F
Inverter Code	Not Inverter
IP Rating	NONE
KVA Code	H
Lifting Lugs	No Lifting Lugs
Locked Bearing Indicator	No Locked Bearing
Motor Lead Quantity/Wire Size	6 @ 18 AWG
Motor Lead Termination	Flying Leads
Motor Standards	NEMA
Motor Type	3530LC
Mounting Arrangement	F1
Number of Poles	6
Overall Length	12.62 IN
Power Factor	95
Product Family	General Purpose
Pulley End Bearing Type	Ball
Pulley Face Code	Standard
Pulley Shaft Indicator	Standard
Rodent Screen	None
Service Factor	1.00
Shaft Diameter	0.625 IN
Shaft Ground Indicator	No Shaft Grounding
Shaft Rotation	Reversible
Shaft Slinger Indicator	No Slinger
Speed	1160 rpm
Speed Code	Single Speed
Starting Method	Direct on line
Thermal Device - Bearing	None
Thermal Device - Winding	None
Vibration Sensor Indicator	No Vibration Sensor
Winding Thermal 1	None
Winding Thermal 2	None

Nameplate

NP3155L									
CAT.NO.	EL11308								
SPEC.	35E007G064								
HP	.75								
VOLTS	115/208-230								
AMP	6.3/3.5-3.2								
RPM	1160								
FRAME	56H		HZ	60		PH	1		
SER.F.	1.00	CODE	H	DES	L	CL	F		
F.L. AVG. EFF.	81.5	PF	95						
RATING	40C AMB-CONT								
CC									
DE	6205		ODE	6203					
ENCL	OPEN	SN							

Parts list

Part number	Description	Quantity
SA407270	SA 35E007G064	1.000 ea
RA398769	RA 35E007G064	1.000 ea
OC3050F09SP	CAPACITOR 50 MFD 370 VAC	1.000 ea
EC1340A03	ELEC CAP, 340-408 MFD, 125V, 1.81D X 3.	1.000 ea
WD3006A01	RSS-2-103JT 2W 10K RES. METAL OXIDE 5%	1.000 ea
NS2512A01	INSULATOR, CONDUIT BOX X	1.000 ea
35CB3007	35 CB CASTING W/.88 DIA. LEAD HOLE	1.000 ea
51XB1016A07	10-16 X 7/16 HXWSSLD SERTYB	2.000 ea
11XW1032G06	10-32 X .38, TAPTITE II, HEX WSHR SLTD U	1.000 ea
35EP3209G00	MASTER ODE,203 BRG	1.000 ea
51XW0832A07	8-32 X .44, TAPTITE II, HEX WSHR SLTD SE	2.000 ea
NS2501A02	INSULATOR, CAPACITOR BOX	1.000 ea
35CB3801	CAPACITOR COVER, CAST	1.000 ea
HA7010	CAPACITOR RETENTION CLAMP	1.000 ea
51XB1016A08	10-16X 1/2HXWSSLD SERTYB	2.000 ea
HW5100A03	WAVY WASHER (W1543-017)	1.000 ea
35EP3210B00	MASTER DE,205 BRG,1.000SH	1.000 ea
XY1032A02	10-32 HEX NUT DIRECTIONAL SERRATION	4.000 ea
35CB4521	35 LIPPED CB LID (GALV & PHOSPH)	1.000 ea
51XW0832A07	8-32 X .44, TAPTITE II, HEX WSHR SLTD SE	4.000 ea
HW2501D13	KEY, 3/16 SQ X 1.375	1.000 ea
HA7000A04	KEY RETAINER 0.625 DIA SHAFTS	1.000 ea
85XU0407S04	4X1/4 U DRIVE PIN STAINLESS	2.000 ea
WD1000A15	3-520132-2 AMP FLAG (4M/RL NON-CANC/NON-	4.000 ea
MJ1000A02	GREASE, POLYREX EM EXXON	0.050 lb
MG1050Y01	CELEROL BALDOR GOLD *** NLA IN 5 GALLON	0.017 ga
HA3100A22	THRUBOLT 10-32 X 10.125	4.000 ea
34GS5003	FOAM SLEEVE, ID = 2 1/16" X 3 3/8"	1.000 ea
SP5181A01	MODEL 35 LC TORQ STAT SWITCH LEAD ASSY	1.000 ea
MN416A01	TAG-INSTAL-MAINT no wire (2500bx)4/22	1.000 ea
LC0001A01	CONN LABEL / WARNING LABEL (LC0001 / LB1	1.000 ea

NP3155L	ALUM SUPER-E UL CC "SEMS"	1.000 ea
36PA1000	PKG GRP, PRINT PK1016A06	1.000 ea
FE-0000001	ZRTG FE ASSEMBLY	1.000 ea
PE-0000001	ZRTG PE ASSEMBLY	1.000 ea

AC Induction Motor Performance Data

Record # 88896

Typical performance - not guaranteed values

Winding: 35WGG064-R003		Type: 3530LC	Enclosure: OPEN	
Nameplate Data			115 V, 60 Hz: Low Voltage Connection	
Rated Output (HP)	.75	Full Load Torque	3.4 LB-FT	
Volts	115/208-230	Start Configuration	direct on line	
Full Load Amps	6.3/3.5-3.2	Breakdown Torque	8.03 LB-FT	
R.P.M.	1160	Pull-up Torque	5.18 LB-FT	
Hz	60 Phase	Locked-rotor Torque	11.2 LB-FT	
NEMA Design Code	L KVA Code	Starting Current	44.2 A	
Service Factor (S.F.)	1	No-load Current	1.97 A	
NEMA Nom. Eff.	81.5 Power Factor	Line-line Res. @ 25°C	1.4 Ω A Ph 1.84 Ω B Ph	
Rating - Duty	40C AMB-CONT	Temp. Rise @ Rated Load	39°C	
		Locked-rotor Power Factor	98.1	
		Rotor inertia	0.217 lb-ft ²	

Load Characteristics 115 V, 60 Hz, 0.75 HP

% of Rated Load	25	50	75	100	125	150
Power Factor	84	91	94	95	95	93
Efficiency	54.8	72.8	79.9	81.6	79.7	73.7
Speed	1190	1182	1172	1160	1143	1115
Line amperes	2.66	3.66	4.84	6.28	8.03	10.6

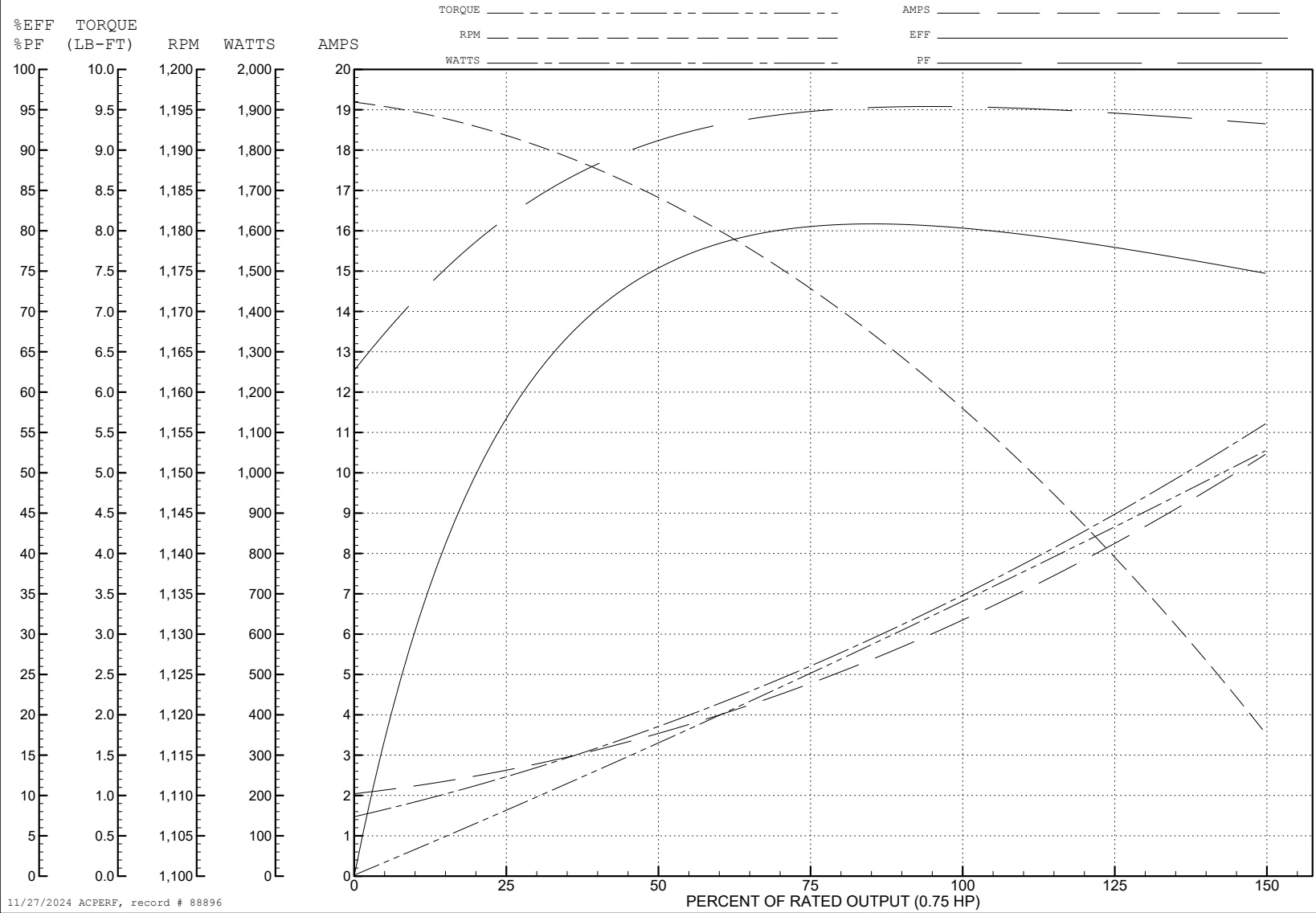
ABB Motors and Mechanical Inc.

WINDING # 35WGG064

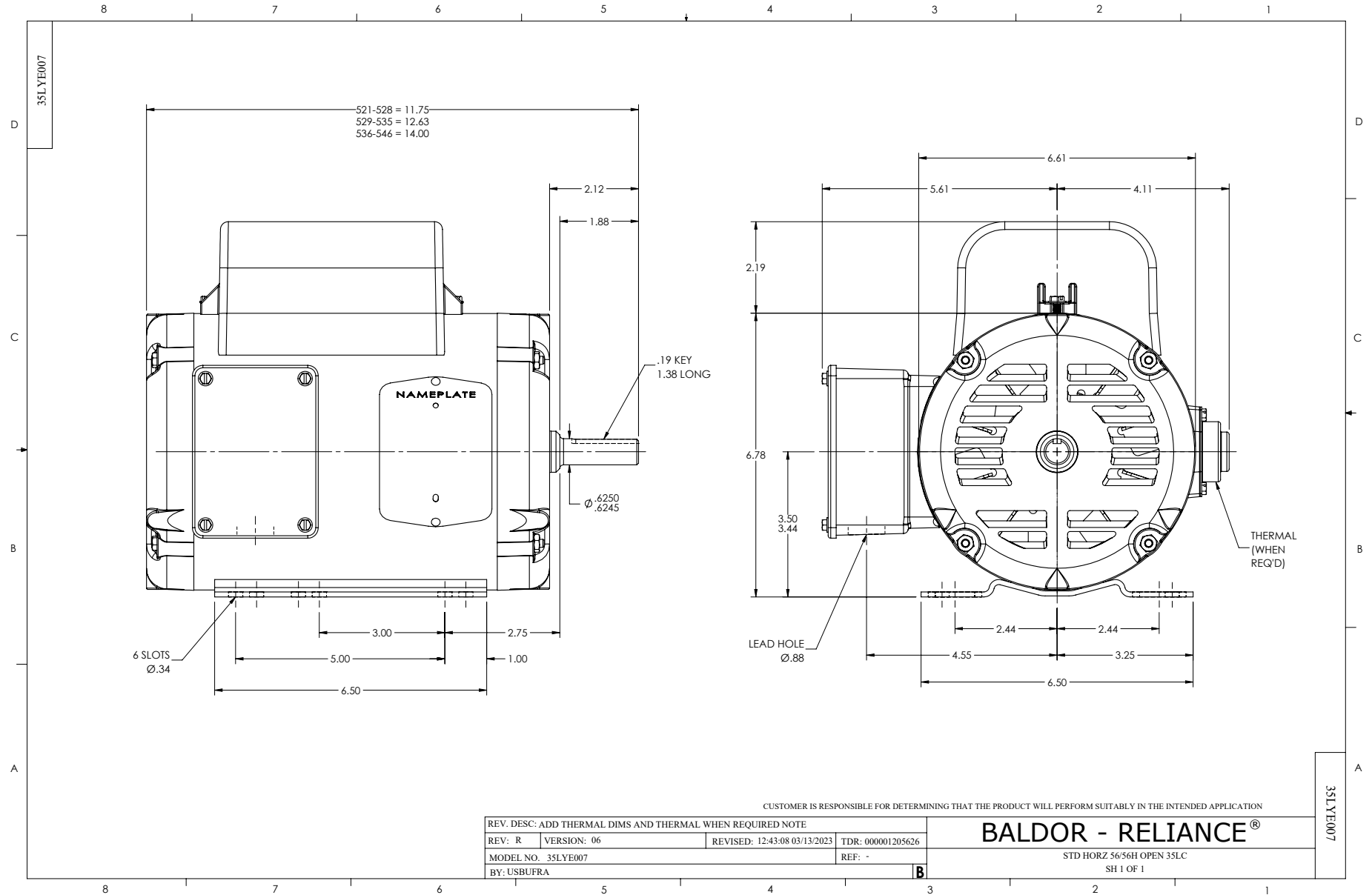
Typical performance - not guaranteed values.

0.75 HP 1 PH 60 HZ 1160 RPM 115 V 3530LC

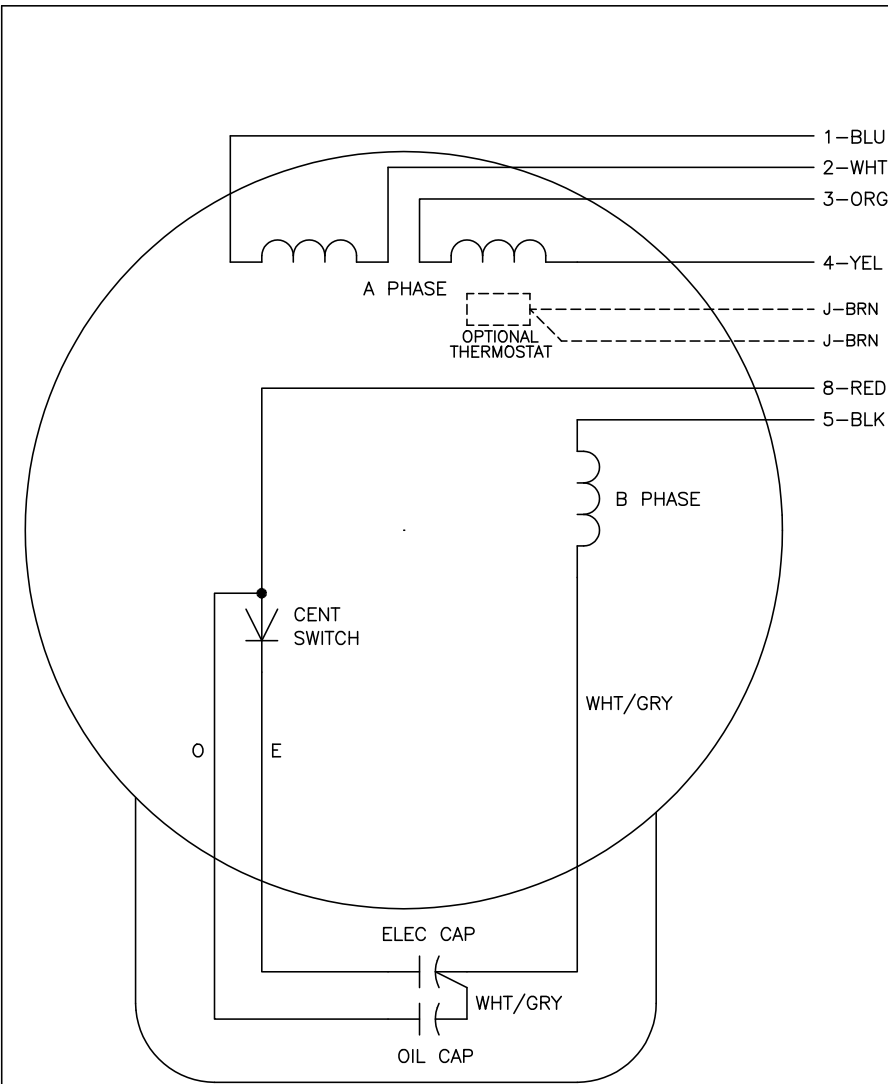
TORQUES (LB-FT): PO=8.03 PU=5.18 LR=11.2 LRA=44.2



11/27/2024 ACPERF, record # 88896



CD0055



	LINE A	LINE B	JOIN
HIGH STD	1	4,5	2,3,8
HIGH OPP	1	4,8	2,3,5
LOW STD	1,3,8	2,4,5	-
LOW OPP	1,3,5	2,4,8	-

NOTES:

1. STANDARD ROTATION IS CCW FACING END OPPOSITE SHAFT EXTENSION.
2. OPTIONAL THERMOSTAT IS PROVIDED WHEN SPECIFIED.
3. MULTIPLE CAPACITORS ARE CONNECTED IN PARALLEL UNLESS OTHERWISE SPECIFIED.
4. LEAD COLORS ARE OPTIONAL. LEADS MUST ALWAYS BE NUMBERED AS SHOWN.

CD0055

REV. DESC: REVISE TO SHOW OPTIONAL COLORS			
REV. LTR: D	BY: JLP	REVISED: 04/08/99 1:17	TDR: 0178636
C00000		FILE: AAA00007414	MDL: -
		MTL: -	

BALDOR ELECTRIC Co.

TYPE LC, DV, REV, 6 LEADS